



Photo: DeniseAnnMarie/Flickr



Marcin Chady



Blaine, WA



cilesfineline

Blaine, Washington is perfectly placed for the ultimate escape. Positioned 35 miles south of Vancouver, British Columbia and 110 miles north of bustling Seattle, Blaine certainly carves out its own stake in bliss. In addition to a reputation for being an incredibly clean, safe town, Blaine glistens in natural beauty. Over a dozen parks are fit for bird watching, biking, and trailblazing, while a handful of manicured golf courses also add to an itinerary of outdoor recreation.

**QUIZ**  
*What Type of Traveller  
Are You Based on  
Your Travel IQ?*

**TAKE THE QUIZ**

**Top 5**



**Outer Island Expeditions**  
Outer Island Expeditions offers everything visitors could want when it comes...



**Peace Arch Park**  
Peace Arch Park is a unique 20-acre park that lies on the boundary between t...



**Semiahmoo Park**  
Take a walk on the shores of Semiahmoo Park, one of the most scenic peninsul...



**The Spa at Semiahmoo Resort**  
Located at the beautiful waterfront, The Spa at Smiahmoo Resort is the perfe...



**Family Interactive Gallery...**  
The museum occupies three buildings, Family Interactive Gallery at Whatcom M...



## THE CITY



jmv (image cropped)

Blaine was first settled in the mid-nineteenth century by pioneers who established the town as a seaport for logging and fishing industries. The world's largest salmon cannery, which has been converted to a waterfront destination, is located here.

Many saw mills were operated in Blaine, and much of the lumber manufactured in the area was transported to San Francisco to rebuild after the 1906 fire. Today Blaine's two largest marinas are still home to hundreds of sailboats and yachts. Local fishermen still fish the waters for fresh crab, salmon, and oysters. Being a coastal location, nature lovers have always appreciated Blaine.

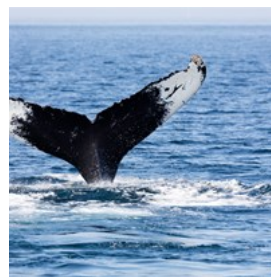
## DO & SEE



cilesfineline (image cropped)

Blaine has plenty of recreational activities for the whole family. Visitors can enjoy scenic hiking trails, watching birds of the region, bicycling, visiting the public pier and fish, or kayaking in the ocean. If nature isn't your thing, Blaine offers year-round world-class golfing.

### Outer Island Expeditions



Outer Island Expeditions offers everything visitors could want when it comes to the ocean. Outer Island Expeditions provides whale watching, fishing charters, kayaking, lighthouse tours and island tours.

Photo: Sviluppo/Shutterstock.com

Address: Smugglers Villa Resort 54 Hunt Rd, Eastsound

Opening hours: Monday-Saturday: 9am - 8pm. Sunday:

8am-9:30pm

Phone: +1 360 376 3711

Internet: [www.outerislandx.com](http://www.outerislandx.com)

Email: [outerislandx@hotmail.com](mailto:outerislandx@hotmail.com)

### Peace Arch Park



Peace Arch Park is a unique 20-acre park that lies on the boundary between the United States and Canada. The park is known for its lush gardens, vast lawns and panoramic views of Point Roberts and Vancouver Island. Cultural and international events also take place here at Peace Arch Park.

Photo: Kevin\_Hsieh/Shutterstock.com

Address: Peace Arch State Park, 321 H ST, Blaine

Internet: [www.peacearchpark.org](http://www.peacearchpark.org)

Email: [info@peacearchpark.org](mailto:info@peacearchpark.org)

### Semiahmoo Park



Take a walk on the shores of Semiahmoo Park, one of the most scenic peninsulas of the whole country. The two-sided beachfront is peaceful and you can observe sea lions and sea birds.

Photo: Christopher Ganus (image cropped)

Address: 9261 Semiahmoo Parkway, Blaine

Phone: +1 360 733 2900

Internet: [www.bellingham.org](http://www.bellingham.org)

### The Spa at Semiahmoo Resort



Located at the beautiful waterfront, The Spa at Semiahmoo Resort is the perfect refuge for luxurious skin care treatments and revitalize mind, body and spirit.

Photo: Syda Productions/Shutterstock.com

Address: 9565 Semiahmoo Pkwy, Blaine

Opening hours: Sunday - Thursday: 10:00 am - 6:00 pm,

Friday & Saturday: 9:00 am - 9:00 pm

Phone: +1 360 318 2009

Internet: [www.semiahmoo.com](http://www.semiahmoo.com)

Email: [spa@semiahmoo.com](mailto:spa@semiahmoo.com)

### Family Interactive Gallery at Whatcom Museum



The museum occupies three buildings, Family Interactive Gallery at Whatcom Museum has interactive art galleries, historical exhibits and photo archives.

Photo: Robert Ashworth (image cropped)

Address: 250 Flora Street, Bellingham

Opening hours: Wednesday-Friday: 10am-5pm

Phone: +1 360 778 8930

Internet: [www.whatcommuseum.org](http://www.whatcommuseum.org)

### Drayton Harbor Maritime Museum



Drayton Harbor Maritime Museum is a private non profit organization and operates and owns the historic Plover pedestrian ferry. The Museum has a collection of artifacts and displays that celebrate the area's maritime history.

Photo: Sanit Fuangnakhon/Shutterstock.com

Address: 1218 4th Street, Blaine

Phone: +1 360 332 5742

Internet: [www.draytonharbormaritime.org](http://www.draytonharbormaritime.org)

More Info: Departs from Blaine Visitor's Dock, Gate II Blaine Harbor, Plover Dock at Resort Semiahmoo depending on the hour

### Paddle and Pedal Adventures Rentals and Sales



Paddle and Pedal Adventures Rental and Sales is the place to go in Blaine for fun outdoor supplies. They sell and rent kayaks, scooters, surfboards and more. The perfect transports to explore the beautiful beaches, city streets and country roads.

They also have a location in Birch Bay with a gift shop and bike, scooter's and water rentals.

Photo: Kevin Jablonski  
Address: Semiahmoo Parkway, Blaine  
Phone: +1 360 224 0707  
Internet: [www.paddleandpedaladventures.com](http://www.paddleandpedaladventures.com)  
More Info: Pricing is by the hour.

### Miniature World Family Fun Center



Miniature World Family Fun Center is a fun place for adults and children. They have an 18-hole miniature golf course, go-karts, and a miniature train ride through 10 acres of forest.

Photo: Sean Locke Photography/Shutterstock.com  
Address: 4620 Birch Bay-Lynden Road, Blaine  
Opening hours: Saturday-Sunday: 11am-6pm  
Phone: +1 360 371 7700  
Internet: [www.miniatureworld.org](http://www.miniatureworld.org)  
Email: [info@miniatureworld.org](mailto:info@miniatureworld.org)

### Lynden Pioneer Museum



Lynden Pioneer Museum was founded 1976 and chronicles the settling of the region. The museum spans half a city block and has an impressive collection of horse drawn vehicles!

Photo: Iakov Filimonov/Shutterstock.com  
Address: 217 Front Street, Lynden  
Opening hours: Mon-Sat: 10am-4pm  
Phone: +1 360 354 3675  
Internet: [www.lyndenpioneermuseum.com](http://www.lyndenpioneermuseum.com)  
Email: [troy@lyndenpioneermuseum.com](mailto:troy@lyndenpioneermuseum.com)

### Birch Bay Waterslides



Birch Bay Waterslides is fun for the entire family. Stay cool during the summer riding the slides and wading in the pools.

Photo: Poznyakov/Shutterstock.com  
Address: 4874 Birch Bay-Lynden Rd, Blaine  
Opening hours: Daily: 10am-6pm  
Phone: +1 360 371 7500  
Internet: [www.birchbaywaterslides.net](http://www.birchbaywaterslides.net)  
Email: [sales@birchbaywaterslides.net](mailto:sales@birchbaywaterslides.net)  
More Info: Rates are subject to change season to season.

### Ferndale Heritage Society



Ferndale Heritage Society is committed to preserving Pioneer Park. Pioneer Park was established in 1901 and has a great deal of cabins. Seize an opportunity to tour the park!

Photo: Joe Mabel (image cropped)  
Address: 2004 Cherry Street, Ferndale  
Opening hours: Tuesday-Sunday: 11:00am - 4:00pm

Phone: +1 360 384 6461

Internet: [www.ferndaleheritagesociety.com](http://www.ferndaleheritagesociety.com)

More Info: Open from May 15 until September 15.

### Bellingham Sportsplex



Bellingham Sportsplex is an American multi-use sport facility and is situated in Bellingham, Washington. It contains an ice skating rink, two turf fields and indoor soccer field. The Sportsplex is also the perfect place for parties.

Photo: [kuzsvetlaya/Shutterstock.com](https://www.shutterstock.com/user/kuzsvetlaya)

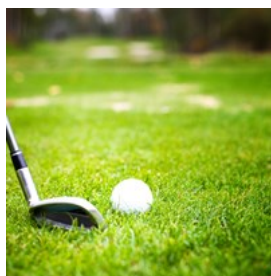
Address: 1225 Civic Field Way, Bellingham

Phone: +1 360 676 1919

Internet: [www.bellinghamsportsplex.com](http://www.bellinghamsportsplex.com)

Email: [marcr@bellinghamsportsplex.com](mailto:marcr@bellinghamsportsplex.com)

### Semiahmoo Golf & Country Club



The astounding Semiahmoo Golf & Country Club was designed by Arnold Palmer himself, which has led to its being rated

Washington's nr 7 public course by Golfweek in 2012. There are 7,005-yards of tree-lined greens, 5 holes and 67 bunkers.

Photo: [Krzysztof Urbanowicz \(image cropped\)](https://www.shutterstock.com/user/Krzysztof-Urbanowicz)

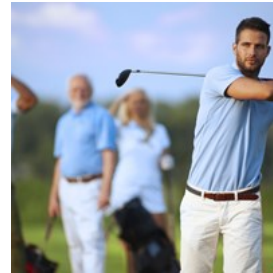
Address: 8720 Semiahmoo Parkway Blaine

Phone: +1 360 371 7015

Internet: [www.semiahmoogolf.com](http://www.semiahmoogolf.com)

Email: [golf@semiahmoo.com](mailto:golf@semiahmoo.com)

### Loomis Trail Golf Club



The Loomis Trail Golf Course is Washington's illustriously ranked course. It's the only course in Washington State to make the nation's Top 100 as well. Canal and lake systems gives Loomis Trail one of the highest slope ratings in the state. The course is open to the public on even days of the month.

Photo: [StockLite/Shutterstock.com](https://www.shutterstock.com/user/StockLite)

Address: 4342 Loomis Trail Rd. Blaine

Phone: +1 60 332 1725

Internet: [www.semiahmoogolf.com](http://www.semiahmoogolf.com)

Email: [golf@semiahmoo.com](mailto:golf@semiahmoo.com)

### DINING



[Robert Kneschke/Shutterstock.com](https://www.shutterstock.com/user/Robert-Kneschke)

Blaine has many different types of cuisine. Being close to the ocean and with ample fishing vessels, seafood is a must, though tastes for varying palate can be found. From Thai, steakhouses, diners, American, and fast food, Blaine has something for everyone.

### Jack Niemann's Black Forest Steak House



Jack Niemann's Black Forest Steak House prides itself on serving Prime and Signature steaks. Steaks aren't all they offer, however. Black

Forest Steakhouse also serves soups, salads, chicken, seafood, and pasta.

Photo: Food Impressions/Shutterstock.com

Address: 1263 Barkley Boulevard, Bellingham

Opening hours: Daily: 4pm-10pm

Phone: +1 360 733 9185

### Drayton Harbor Oyster Company



Super rustic and right overlooking the Drayton Harbor, that is Drayton oyster bar. Freshest baked and raw oysters to eat right or away or to

take home are available here.

Photo: Nishihama/Shutterstock.com

Address: 677 Peace Portal Drive, Blaine

Phone: +1 360 312 7047

### Great Blue Heron Grill



Great Blue Heron Grill is located next to the golf course and features lovely golf-course views. All dishes are prepared fresh daily and beautifully

presented.

Photo: Xan/Shutterstock.com

Address: 8720 Semiahmoo Pkwy, Blaine

Opening hours: Open for breakfast, lunch, dinner and weekend brunch.

Phone: +1 800 231 4425

Internet: [www.semiahmoo.com](http://www.semiahmoo.com)

Email: [guestservices@semiahmoo.com](mailto:guestservices@semiahmoo.com)

### Tony's Just A Bite



Those looking for casual dining in a genuinely welcoming atmosphere, should stop by Tony's Just A Bite. The interior rustic and entertaining and

breakfast or lunch are excellent and reasonably priced.

Photo: Valentyn Volkov/Shutterstock.com

Address: 679 Peace Portal Dr, Blaine

Phone: +1 360 332 8669

### Paso del Norte



Paso del Norte is a family owned restaurant that has been in business for many years. They boast an outside dining patio, private rooms, and a full

service bar. Paso del Norte serves up Mexican dishes 7 days a week.

Photo: gkrphoto/Shutterstock.com

Address: 758 Peace Portal Drive, Blaine

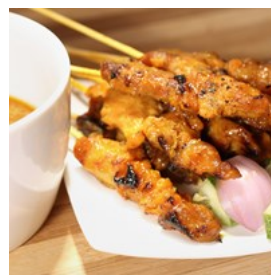
Opening hours: Daily: 11am-9pm

Phone: +1 360 332 4045

Internet: [www.pasodelnorte.net](http://www.pasodelnorte.net)

Email: [info@pasodelnorte.net](mailto:info@pasodelnorte.net)

### Chada Thai



Chada has delicious Thai cuisine. Menu items at Chada include: chicken satay, spring rolls, crab rangoon, and much more.

Photo: dolphfyn/Shutterstock.com

Address: 825 Peace Portal Drive, Blaine, WA 98230

Opening hours: Monday-Thursday: 11am-9pm; Friday: 11am-9:30pm; Saturday-Sunday: 12pm-9pm

Phone: +1 360 332 3267

Internet: [www.chadathaiusa.com](http://www.chadathaiusa.com)

### Bob's Burgers & Brew Birch Bay



Bob's Burgers and Brew has over 20 different beef and chicken burgers. They also offer breakfast items like pancakes and french toast.

Photo: [Timolina/Shutterstock.com](https://www.shutterstock.com)

Address: 8120 Birch Bay Square Street, Blaine

Opening hours: Monday-Thursday: 8am-9pm. Friday: 8am-10pm. Saturday: 7am-10pm. Sunday: 9am-9pm.

Phone: +1 360 366 3199

Internet: [www.bobsburgersandbrew.com](http://www.bobsburgersandbrew.com)

## CAFÉS



[Kzenon/Shutterstock.com](https://www.shutterstock.com)

Need a little pick up after all the sightseeing in Blaine? Blaine has you covered! Coffee, espressos, smoothies and much more are offered at Blaine's cafés, as well as fantastic food.

### Peace Arch City Café & Bar



Peace Arch City Café & Bar offers a full espresso bar along with many types of pastries, including berry scones, muffins, cinnamon rolls, and cookies.

Photo: [Nataliia Doroshenko/Shutterstock.com](https://www.shutterstock.com)

Address: 658 Peace Portal Dr, Blaine

Opening hours: Monday-Friday: 7:30am-4pm. Saturday: 7.30am-3pm.

Phone: +1 360 332 5212

Internet: [www.peacearchcitycafe.com](http://www.peacearchcitycafe.com)

Email: [peacearchcitycafe@gmail.com](mailto:peacearchcitycafe@gmail.com)

### The Woods Coffee



The Woods Coffee has lattes, mocha, caramel macchiato and lots more. For lunch, look for sandwiches, cookies and artisan breads.

Photo: [Oliveshadow/Shutterstock.com](https://www.shutterstock.com)

Address: 8130 Birch Bay Square Street, Blaine

Opening hours: Monday-Friday: 5:30am-8pm.

Saturday-Sunday: 6am-8pm.

Phone: +1 360 393 4761

Internet: [www.thewoodscoffee.com](http://www.thewoodscoffee.com)

Email: [info@woodscoffee.com](mailto:info@woodscoffee.com)

### The C Shop



The C Shop, a busy corner store offering everything from ice creams to chocolates, candies, pastries and sandwiches and they even

provide a pizza menu. On-site you can chat with the candymakers who prepares homemade fudge, caramel, peanut brittle, seafoam and marshmallows and they for sure provide sweets to suite all tastes.

Photo: [Jiri Hera/Shutterstock.com](https://www.shutterstock.com)

Address: 4825 Alderson Road, Birch Bay

Phone: +1 360 371 2070

Internet: [www.thecshop.com](http://www.thecshop.com)

Email: [cshop@thecshop.com](mailto:cshop@thecshop.com)

### Avellino Coffeehouse



menu.

Avellino Coffeehouse has been in business for nearly 15 years. They have a menu of delicious coffee and bakery items, and even a gluten free

Photo: Rose-Marie Henriksson/Shutterstock.com

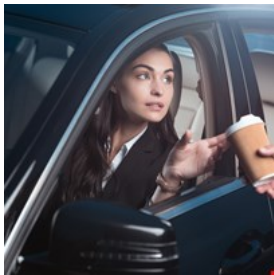
Address: 1329 Railroad Avenue, Bellingham

Opening hours: Monday - Friday 6:00 am - 7:00 pm Saturday & Sunday 7:00 am - 7:00 pm

Phone: +1 360 715 1005

Internet: [www.avellinocoffeehouse.com](http://www.avellinocoffeehouse.com)

### Cruisin Coffee



and sauces.

Cruisin Coffee is a 24 hour drive through coffee shop. They feature a variety of ways to customize your drink with different flavors, milks

Photo: LightField Studios/Shutterstock.com

Address: 3906 Bennett Drive, Bellingham

Opening hours: 24 hours

Phone: +1 360 715 8700

Internet: [www.cruisincoffee.com](http://www.cruisincoffee.com)

Email: [info@cruisincoffee.com](mailto:info@cruisincoffee.com)

### Mugshots Espresso



Mugshots Espresso has locally roasted, gourmet coffee. Fresh scones, muffins and cookies are available to pair with your drinks.

Photo: barang/Shutterstock.com

Address: 5750 Vista Drive, Ferndale

Opening hours: Monday-Friday: 5am-7pm. Saturday: 7am-7pm. Sunday: 7am-6pm.

Phone: +1 360 312 9181

Internet: [www.mugshotsespresso.com](http://www.mugshotsespresso.com)

Email: [MugShotsEspresso@comcast.net](mailto:MugShotsEspresso@comcast.net)

### Katz Coffee & Used Books



through the collectible books.

Katz! is an interesting coffee and used book store. Come into Katz! and enjoy a cup of one of the over a dozen blends of coffee while browsing

Photo: Mutita Narkmuang/Shutterstock.com

Address: 513 Front Street, Lynden

Opening hours: Mon-Sat: 9am-5pm

Phone: +1 360 354 2471

### BARS & NIGHTLIFE



[wavebreakmedia/Shutterstock.com](http://wavebreakmedia/Shutterstock.com)

The fun at Blaine doesn't stop when the sun goes down and the birds stop singing. Blaine has a fabulous night life that you will want to explore. Bars, grills, and a winery make for a great evening out on the town.

### Great Blue Heron Grill



Great Blue Heron Grill offers delicious country food and cold drinks. Their popular Happy Hour lasts from 3pm to 5pm, featuring cheap



beers and wines by-the-glass.

Photo: belushi/Shutterstock.com

Address: 8720 Semiahmoo Parkway, Blaine

Opening hours: Monday: 7am-5pm. Tuesday-Wednesday:  
7am-8pm. Thursday-Sunday: 7am-9pm.

Phone: +1 360 371 5745

Internet: [www.semiahmoo.com](http://www.semiahmoo.com)

Email: [guestservices@semiahmoo.com](mailto:guestservices@semiahmoo.com)

### The Wheelhouse Sports Bar and Grill



The Wheelhouse offers many different type of beers on tap. Domestic and imported beer is offered by the bottle or can. They also provide a menu that includes pizzas, sandwiches, hot dogs and salads.

Photo: Minerva Studio/Shutterstock.com

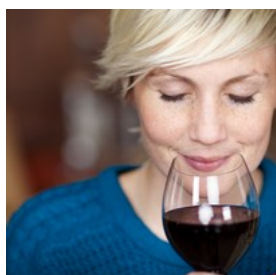
Address: 746 Peace Portal Drive, Blaine

Opening hours: Monday - Saturday: 12pm - 2am. Sunday:  
10am - 2am.

Phone: +1 360 332 3512

Internet: [www.wheelhousesportsbar.com](http://www.wheelhousesportsbar.com)

### GLM Wine Co.



Glacial Lake Missoula Winery is a locally owned winery in Blaine. A barrel room, family rooms and wine tastings are featured.

Photo: racorn/Shutterstock.com

Address: 1678 Boblett St, Blaine

Opening hours: Saturday: 12pm-6pm, Sunday: 12pm-5pm

Phone: +1 360 332 2097

Internet: [www.glmwine.com](http://www.glmwine.com)

Email: [tom@glmwine.com](mailto:tom@glmwine.com)

### Main Street Bar & Grill



live music.

Main Street Bar and Grill has a complete appetizer and dinner menu. They always have something exciting going on, like pool, karaoke, dancing or

Photo: Areipa.lt/Shutterstock.com

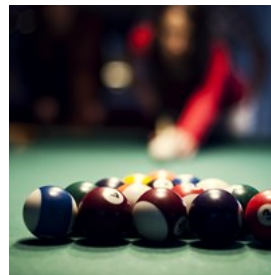
Address: 2005 Main Street, Ferndale

Opening hours: Daily 10:30am - 11:00pm

Phone: +1 360 312 9162

Email: [mainstreet.barandgrill@yahoo.com](mailto:mainstreet.barandgrill@yahoo.com)

### The Coconut



here as well.

The Coconut has many beers on tap and delicious pub fare. Big screen TVs, pull tabs, pool tables and even upright video games are

Photo: gpointstudio/Shutterstock.com

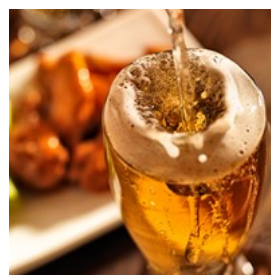
Address: 710 Marine Drive, Bellingham

Opening hours: Daily: 12pm-2am

Phone: +1 360 671 6756

Internet: [www.cocoanutgrovesportsbar.com](http://www.cocoanutgrovesportsbar.com)

### Boundry Bay and Brewery



more.

This bar is not only offering tasty handcrafted beer but also mouthwatering food. Menu items at the Boundry Bay and Brewery

Photo: Joshua Resnick/Shutterstock.com

Address: 1107 Railroad Avenue, Bellingham

Opening hours: Daily: 11am-10pm, Weekends until 11pm

Phone: +1 360 647 5593

Internet: [www.bbaybrewery.com](http://www.bbaybrewery.com)  
Email: [genmgr@bbaybrewery.com](mailto:genmgr@bbaybrewery.com)

### The Temple Bar



"Where old-world fare meets Northwest foodie!"

The Temple Bar is creative and sexy, with plenty of artisan cheese, cured meat, seasonal

specialties and carefully crafted cocktails. They voted "Best Happy Hour" four years in a row by readers of the Cascadia Weekly.

Photo: Maxim Blinkov/Shutterstock.com  
Address: 306 West Champion Street, Bellingham  
Opening hours: Daily: 3pm-Close  
Phone: +1 360 676 8660  
Internet: [www.templebarbellingham.com](http://www.templebarbellingham.com)  
Email: [info@templebarbellingham.com](mailto:info@templebarbellingham.com)

### Chuckanut Brewery & Kitchen



Chuckanut Brewery & Kitchen is consistent in its unique, quality driven craft beers and beverages. All is made with creative, locally

influenced, fresh ingredients.

Photo: Nitr/Shutterstock.com  
Address: 601 West Holly Street, Bellingham  
Phone: +1 360 752 3377  
Internet: [www.chuckanutbreweryandkitchen.com](http://www.chuckanutbreweryandkitchen.com)  
Email: [info@chuckanutbreweryandkitchen.com](mailto:info@chuckanutbreweryandkitchen.com)

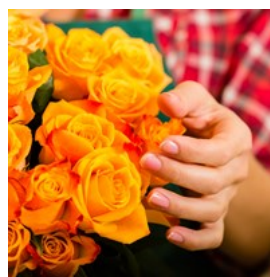
## SHOPPING



*oneinchpunch/Shutterstock.com*

With three major shopping centers, Blaine has everyone covered. If you like the crowds and hustle and bustle of deal hunting, or prefer smaller, unique boutique shops, you can find it all. Make sure to pick up some alpaca wool apparel or special souvenir.

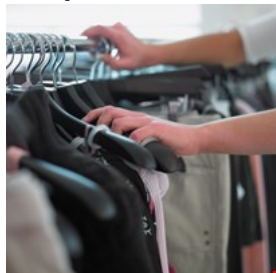
### Blaine Bouquets



Blaine Bouquets has many different floral arrangements for every occasion. Celebrate holidays and special occasions in true style with some of nature's most beautiful arrangements.

Photo: Kzenon/Shutterstock.com  
Address: 625 Peace Portal Drive, Blaine  
Opening hours: Monday - Friday: 9am - 5pm. Saturday: 10am - 2pm.  
Phone: +1 360 332 6700  
Internet: [www.blainebouquets.net](http://www.blainebouquets.net)  
Email: [blainebouquets@gmail.com](mailto:blainebouquets@gmail.com)

### Betty Be Good Boutique



Betty Be Good is a chic boutique with carefully selected styles out of recycled materials. All the styles are available at reasonable prices so you can fresh up your whole wardrobe.

Photo: Blend Images/Shutterstock.com

Address: 8125 Birch Bay Square Street, 201, Blaine

Phone: +1 360 441 7691

Internet:

[shopbettybegood.com/pages/betty-s-going-bricks-mortar](http://shopbettybegood.com/pages/betty-s-going-bricks-mortar)

### Meridian Street and Chocolate Necessities



Meridian Street boasts a sheer number of local and nationally recognized stores. Just like Chocolate Necessities, a unique store with hand-crafted chocolate.

Photo: A. and I. Kruk/Shutterstock.com

Address: 4600 Guide Meridian 109, Bellingham

Phone: +1 360 676 0589

Internet: [www.chocolatenecessities.com](http://www.chocolatenecessities.com)

### Downtown Bellingham



Downtown Bellingham has it all: little specialty boutiques, cute book stores and Bellingham Farmers' Market on Saturdays. Well-known shops are among others Michael's Books, The Greenhouse, Allied Arts of Whatcom County and Bella Flora.

Photo: Joe Goldberg (image cropped)

Address: 1310 Commercial Street, Bellingham

Phone: +1 360 527 8710

Internet: [www.downtownbellingham.com](http://www.downtownbellingham.com)

### Historic Fairhaven District



Located in a historic district with classic brick facades, you can find upscale galleries, clothing, jewelry, books as well as books. Stop by

Bead Bazaar, Paper Dreams, Good Earth Pottery, Gallery West and Village Books.

Photo: iwona\_kellie (image cropped)

Address: Harris Avenue, Bellingham

Internet: [www.fairhaven.com](http://www.fairhaven.com)

### Barkley Village



Barkely Village boasts a unique architectural design as well as specialty shops, restaurants like Scotty Brown's and Jalapenos and a movie theater with Imax.

Photo: racorn/Shutterstock.com

Address: 3005 Cinema Pl, Bellingham

Phone: +1 844 462 7342

Internet: [barkleyvillage.com](http://barkleyvillage.com)

### Ferndale Market



Fresh local produce as well as handcrafted gift ideas and souvenirs can be obtained at the seasonal Farmers' Market on Saturdays.

Photo: Robert Ashworth (image cropped)

Address: 2007 Cherry St, Ferndale

Phone: +1 248 546 1632

Internet: [www.ferndalepublicmarket.org/contact.html](http://www.ferndalepublicmarket.org/contact.html)

### Downtown Lynden



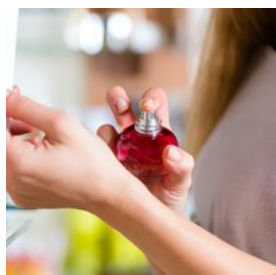
Lynden features a picturesque Dutch-style architecture. Downtown can be found The Jansen Art Center, Lynden Pioneer Museum, bakeries, restaurants, antique shops as well as Samson Estates Winery.

Photo: Michael G Winters (image cropped)

Address: Downtown Lynden

Internet: lynden.org

### Duty Free Americas 213



Duty Free offers alcohol, tobacco, fragrances, watches, gifts, jewelry, perfumes and travel-related merchandise from high quality brand names and all of that is duty free. Brands you will find here are Dior, Chanel, Lancôme, Gucci, Calvin Klein, Lacoste and many many more.

Photo: Kzenon/Shutterstock.com

Address: 20 12th St, Blaine

Phone: +1 360 332 5223

Internet: www.dutyfreeamericas.com

### Birch Bay Square



Birch Bay Square offers many types of shops and eateries. Shops include The Woods Coffee, Jack in the Box and Van Heusen.

Photo: pikselstock/Shutterstock.com

Address: 8115 Birch Bay Square Street, Blaine

Opening hours: Monday-Saturday: 10am-5pm. Sunday: 9am-5pm.

Phone: +1 360 676 4866

Internet: www.birchbaysquare.com

Email: info@saratogacom.com

### Back in Thyme



Back in Thyme is a small lavender and herb farm in Ferndale, WA. Vintage fabric, potpurri, soap, purses and much more may be found.

Photo: Jag\_cz/Shutterstock.com

Address: 7247 Everett Road, Ferndale

Opening hours: Daily: 9am-6pm

Phone: +1 360 303 5103

Internet: www.backinthyme4u.com

Email: backinthyme4me@yahoo.com

### Bellis Fair Mall



Step out in style with Bellis Fair Mall in Bellingham. Families love the Children's Play Area, food court and offerings for shoppers of all ages.

Photo: Ivanko80/Shutterstock.com

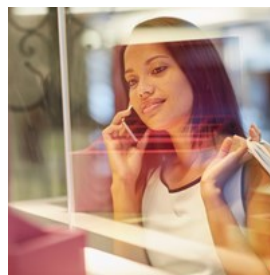
Address: 1 Bellis Fair Parkway, Bellingham

Opening hours: Monday-Saturday: 9am-9pm, Saturday from 10am, Sunday: 10am-9pm

Phone: +1 360 671 5895

Internet: www.bellisfair.com

### Sunset Square Shopping Center



Sunset Square features K-Mart, Joann's Fabrics, a grocery store and drug store, a four-plex theater, a Goodwill, and several specialty shops. There are a variety of restaurants including The Grace Cafe.

Photo: mavo/Shutterstock.com

Address: 1135 E Sunset Dr, Bellingham  
Phone: +1 360 647 4755

## TOURIST INFORMATION



TravelingOtter (image cropped)

### Port of Bellingham International Airport



The Port of Bellingham International Airport (BLI) serves the Blaine area. BLI services Alaska Airlines, Allegiant Air, and Frontier Airlines. The airport also functions as a low fare alternative airport to the Vancouver International Airport.

### Car Rentals

Bellingham International Airport has many car rental companies situated in the area.

### Shuttle Bus Services

For port travelers there are also shuttle bus services available.

### Taxi Services

From the Bellingham Airport there are several taxi services available to pick you up and drive you to your destination.

Photo: Juan Garces

Address: 1801 Roeder Avenue, Bellingham  
Phone: +1 360 676 2500

Internet: [www.portofbellingham.com](http://www.portofbellingham.com)

### Time Zone



Blaine is located in the Pacific time zone, and all times are reflected in Pacific time.

Photo: Marek Polakovic

### Public Transport



Whatcom Public Transportation provides fixed route bus service, specialized transportation, and vanpools to the Blaine area. They operate a fleet of 65 full-size buses, 37 minibuses, and 39 vanpool vans. Four transit centers are serviced: Bellingham Station, Cordata Station (in North Bellingham), Ferndale Station and Lynden Station.

Photo: Pierre-Luc Auclair

Phone: +1 360 676 7433

Internet: [www.ridewta.com](http://www.ridewta.com)

### Taxi



Birch Blaine Taxi +1 360  
332 1960 Blaine Taxi  
Services +1 360 220  
4990 taxibellingham.com  
Red Cab Of  
Bellingham-Blaine -Birch  
Bay +1 360 332 1960

Photo: ArrivalGuides

## Post

United States Post Office



Photo: Andy Fuchs

Address: 701 Harrison Ave, Blaine

Opening hours: Monday - Friday 8:30am - 5:00pm

Phone: +1 360-332-7184

Internet: [www.usps.com](http://www.usps.com)

## Pharmacy



Rite Aide Pharmacy 1195  
Boblett Street, Blaine +1  
360 332 1616 7AM -  
10PM Every day  
Walgreens Pharmacies  
1901 Main Street,

Ferndale

+1 360 384 7658

8AM - 12 AM

Haggen Food & Pharmacy

1815 Main Street, Ferndale

+1360 380 9000

Open 24 hours

Photo: Gemma Garner

Address: Rite Aide Pharmacy 1195 Boblett Street, Blaine

Opening hours: 7am - 10pm Every day

Phone: +1 360 332 1616

Internet: [www.riteaid.com](http://www.riteaid.com)

## Telephone



Country Code: +1 Area  
codes in Blaine: 360

Photo: Jardson Almeida

## Electricity

10-volt



Photo: Stirling Tschan

## Population

4,831

## Currency

\$1 U.S. = 100 cents

## Opening hours

General opening hours for stores are 10am until 9pm.

## Internet

[ci.blaine.wa.us](http://ci.blaine.wa.us)

## Newspapers

The Northern Light

## Emergency numbers

911

## Tourist information

Blaine Visitor Information Center

728 Peace Portal Drive

Blaine, WA 98230

+1 360 332 4544