



# Oahu, Hawaii

Photo: Ppictures/Shutterstock.com



aines/Shutterstock.com

Surrounded by the green verdant mountains of dormant volcanoes, and the roar of the Pacific beating down upon palm-fringed white beaches, the island Oahu is an incredibly idyllic holiday destination. With an abundance of natural beauty and the attractions of the vibrant and buzzing metropolis Honolulu, Oahu is sure to please all those who plan and come to visit, providing every experience, from beach bum to culture vulture.



Nataliya Hora/Shutterstock.com

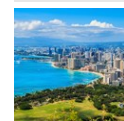


Shane Myers Photography/Shutterstock.com

**QUIZ**  
*What Type of Traveller  
Are You Based on  
Your Travel IQ?*

**TAKE THE QUIZ**

## Top 5



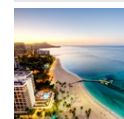
### Honolulu

Hawaii's capital, its largest city and the center of commerce, history and e...



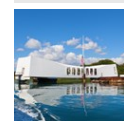
### Iolani Palace

'Iolani Palace is the only official royal residence in the United States. Th...



### Waikiki

The two-mile stretch of beach south of central Honolulu is the island's main...



### World War II Valor in the ...

The United States naval base at Pearl Harbor was surprised by a Japanese mil...



### Diamond Head State Monument

Hawaii's most famous landmark, the Diamond Head, is a volcanic





## THE ISLAND



*Shane Myers Photography/Shutterstock.com*

While hula-clad dancers, sun-kissed beaches and killer surf shape Oahu's image, this island has all this and much more: The downtown district of Honolulu, the most populous city, features many of the island's finest landmarks, such as the Aloha Tower and the Iolani Palace, and it is also home to some of Honolulu's finest restaurants and cultural institutions.

Nearby, Chinatown is one of the most interesting and vibrant areas, where you will find beautiful temples, cutting-edge cultural and entertainment venues, a fine array of restaurants as well as some Chinese herbal and medicinal shops that sell a range of cure-alls.

To the North of the city, Pearl Harbor reminds of the Japanese surprise attack that led to the American intervention in World War II. To the East, the famous suburb of Waikiki awaits with its beautiful beaches, pounding surf, resort hotels, bars, and restaurants. Manoa, Hawaii's university town, is a tranquil yet beautiful suburb tucked in between the mountains and towering above everything, while Diamond Head dominates the impressive skyline over all.

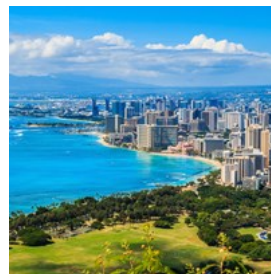
## DO & SEE



*SvetlanaSF/Shutterstock.com*

The breathtaking island of Oahu offers an endless array of activities and sights. While relaxing on the beaches or braving the surf will always be Hawaiian specialties, culture and adventure should also be on the bucket-list: celebrate Polynesian culture at a luau, get a dose of modern culture in Honolulu or admire the mesmerizing natural reserve wildlife.

### Honolulu



Hawaii's capital, its largest city and the center of commerce, history and entertainment, is a true metropolis with

Polynesian flavor. Although visitors might prefer to laze on the beautiful beaches or to explore the natural wonders of the island, a visit to The Big Pineapple, as it is known, should not be passed up, as you do not want to miss the dining options, the student scene, the historical sights or the cultural delights.

Photo: Izabela23/Shutterstock.com

Address: Honolulu, HI

Internet: [www.honolulu.gov](http://www.honolulu.gov)

### Iolani Palace



Iolani Palace is the only official royal residence in the United States. The last king of Hawaii was David Kalakaua, who ruled the kingdom in the late nineteenth century. Hawaii became an American territory in 1900 and, almost 60 years later, was declared the 50th American state.

Photo: cleanfotos/Shutterstock.com

Address: 364 South King Street - Honolulu, HI

Opening hours: Mon - Sat 9h - 16h

Phone: +1 808 586 0352

Internet: [www.iolanipalace.org](http://www.iolanipalace.org)

Email: [info@iolanipalace.org](mailto:info@iolanipalace.org)

### Waikiki



The two-mile stretch of beach south of central Honolulu is the island's main resort area and, thus, one of the biggest draws for tourists who flock here for laid-back vibes, gentle surf, dining, entertainment, nightlife and shopping. Lying in the shadow of the Diamond Head makes not only stunning views but also an easy access to one of Hawaii's most famous landmarks.

Photo: Andy Tam/Shutterstock.com

Address: Waikiki, HI

Internet: [www.waikiki.com](http://www.waikiki.com)

Email: [info@waikiki.com](mailto:info@waikiki.com)

### World War II Valor in the Pacific



The United States naval base at Pearl Harbor was surprised by a Japanese military strike on the morning of December 7, 1941: all eight U.S. Navy

battleships were damaged, more than 2,000 Americans lost their lives, and this very attack led to the American involvement in World War II. Today, a memorial reminds of those who died in the assault, while two museums and outdoor exhibits present the historical happenings and their backgrounds. The visitor centre in general also features exhibits and interpretive programs for other Pacific National Parks: Kalaupapa National Historical Park on the island of Molokai, American Memorial Park in Saipan, and War in the Pacific National Historical Park in Guam.

Photo: pinggr/Shutterstock.com

Address: 1 Arizona Memorial Place - Honolulu, HI

Opening hours: Open daily from 7h - 17h

Phone: +1 877 444 6777

Internet: [www.nps.gov/valr](http://www.nps.gov/valr)

Email: [valr\\_social\\_media@nps.gov](mailto:valr_social_media@nps.gov)

### Diamond Head State Monument



Hawaii's most famous landmark, the Diamond Head, is a volcanic crater with a 360-degree view over the island, and its name comes from English sailors who thought that its calcite crystals were pure diamonds. The scenic hike up to the summit, taking the so-called stairway to heaven, will not be soon forgotten, and so it happens to the views from atop.

Photo: Steve Jurvetson/Flickr.com (image cropped)

Address: Honolulu, HI

Opening hours: Open daily from 6h - 18h

Phone: +1 808 587 0300

Internet: [www.dlnr.hawaii.gov/dsp/parks/oahu/diamond-head-state-monument](http://www.dlnr.hawaii.gov/dsp/parks/oahu/diamond-head-state-monument)

Email: [dlnr@hawaii.gov](mailto:dlnr@hawaii.gov)

More Info: Last entrance to hike the trail is at 16h30

### Waikiki Aquarium



The Waikiki Aquarium, located right on the shores and run by the nearby university, attempts to recreate diverse tropical Pacific reef habitats to function as home to a number of aquatic species, including some rare fish species from the Northwestern Hawaiian Islands and the moon jellyfish.

Photo: Meowmeow10/Wikimedia Commons (image cropped)  
Address: 2777 Kalakaua Avenue - Honolulu, HI  
Opening hours: Open daily from 9h - 17h  
Phone: +1 808 923 9741  
Internet: [www.waikikiaquarium.org](http://www.waikikiaquarium.org)

### Hanauma Bay Nature Reserve



Hanauma Bay is a marine nature reserve set in a stunning bay and consequently one of the best snorkeling sites in Oahu. As this reserve is dedicated to protecting the marine life in the bay, visitors are most encouraged to promote this endeavor.

Photo: I. Noyan Yilma/Shutterstock.com  
Address: 100 Hanauma Bay Road - Honolulu, HI  
Opening hours: Wed - Mon 6h - 18h  
Phone: +1 808 396 4229  
Internet: [www.hanaumabaystatepark.com](http://www.hanaumabaystatepark.com)

### Polynesian Cultural Center



Sample a traditional Hawaiian luau feast and learn about Polynesian island culture at the Polynesian Cultural Center. The luau has been an opportunity for Hawaiians to celebrate

the good things in life with friends and family for generations, so the bright and festive luau clothes turn any frown upside down.

Photo: Deborah Kolb/Shutterstock.com  
Address: 55-370 Kamehameha Highway - Laie, HI  
Opening hours: Mon - Sat 12h - 21h  
Phone: +1 800 367 7060  
Internet: [www.polynesia.com](http://www.polynesia.com)  
Email: [customercare@polynesia.com](mailto:customercare@polynesia.com)  
More Info: Hukilau marketplace is open Mon - Sat 11h - 21h30

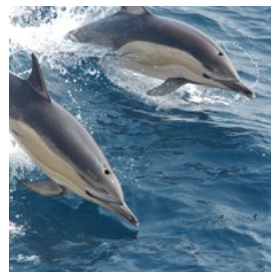
### Surfing



People from all over the world dream of catching waves on the shores of Hawaii, and a trip to the islands would not be complete without this adventure. Once upon a time, surfing was a sport reserved for royalty, but today, thankfully just about anybody can take lessons and, thus, experience the thrill of the ocean up close - try out Hans Hedemann Surf School.

Photo: EpicStockMedia/Shutterstock.com  
Address: 2586 Kalakaua Avenue - Honolulu, HI  
Phone: +1 808 924 7778  
Internet: [www.hhsurf.com](http://www.hhsurf.com)  
Email: [info@hhsurf.com](mailto:info@hhsurf.com)

### Whale and Dolphin Watching



Experience the gracefulness and the beauty of aquatic mammals and sea turtles with this unique tour where you'll get a chance to encounter dolphins, whales, and turtles. Wild Side Specialty Tours offers personal and high quality tours with many different options.

Photo: NOAA NMFS/Wikimedia Commons (image cropped)



Address: 85-371 Farrington Highway - Waianae, HI  
Opening hours: Open daily from 8h - 16h  
Phone: +1 808 306 7273  
Internet: [www.sailhawaii.com](http://www.sailhawaii.com)  
Email: [reservations@sailhawaii.com](mailto:reservations@sailhawaii.com)

### Honolulu Zoo



The Honolulu Zoo is home to over 900 different animals from the tropics, including Komodo Dragons, orangutans, elephants, primates, and a variety of African mammals. Distributed on 42 acres of tropical greenery, the aviary is especially charming, as visitors can here admire a variety of native Hawaiian birds, including the nene and 'apapane.

Photo: Mr.Popz Photo/Shutterstock.com  
Address: 151 Kapahulu Avenue - Honolulu, HI  
Opening hours: Open daily from 9h - 16h30  
Phone: +1 808 971 7171  
Internet: [www.honolulu zoo.org](http://www.honolulu zoo.org)  
Email: [info@honzoosoc.org](mailto:info@honzoosoc.org)

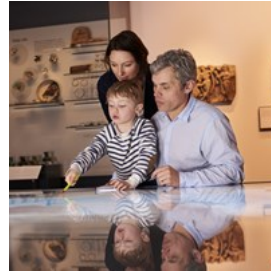
### Byodo-In Temple



Ring the 5-foot and 3-ton brass bell for good luck, feed droves of eager carp, ducks and swans in the garden's pond, or just relax in the ambiance of the Byodo-In Temple. However, make sure to visit the 2-ton carved wooden statue of the Buddha sitting placidly inside the replica Temple, hearkening 11th century Uji, Japan.

Photo: [jamie\\_nakamura/Pixabay.com](http://jamie_nakamura/pixabay.com) (image cropped)  
Address: 47-200 Kahekili Highway - Kaneohe, HI  
Opening hours: Open daily from 8h30 - 16h45  
Phone: +1 808 239 9844  
Internet: [www.byodo-in.com](http://www.byodo-in.com)  
Email: [byodo-in@nsmg.com](mailto:byodo-in@nsmg.com)

### Bishop Museum



The Bishop Museum provides excellent exhibits of Hawaiian and Polynesian culture, including Hawaiian artifacts and royal family heirlooms. The museum was founded in 1889 in honor of the royal Kamehameha family and it is definitely one of the must sees when visiting Honolulu.

Photo: [Monkey Business Images/Shutterstock.com](http://Monkey Business Images/Shutterstock.com)  
Address: 1525 Bernice Street - Honolulu, HI  
Opening hours: Open daily from 9h - 17h  
Phone: +1 808 847 3511  
Internet: [www.bishopmuseum.org](http://www.bishopmuseum.org)  
Email: [membership@bishopmuseum.org](mailto:membership@bishopmuseum.org)

### Chinatown Cultural Plaza



The sprawling Cultural Plaza in Chinatown is a shopping square surrounding a courtyard that hosts an incense-enveloped shrine and the Moongate stage for holiday performances. Near the canal, you will meet local members of the community who play cards and mah-jong.

Photo: [prayitnophotography/Flickr.com](http://prayitnophotography/flickr.com) (image cropped)  
Address: 100 North Beretania Street - Honolulu, HI  
Opening hours: Mon - Fri 8h - 17h  
Phone: +1 808 521 4934  
Internet: [www.chinatownculturalplaza.com](http://www.chinatownculturalplaza.com)  
Email: [culturalplazahi@gmail.com](mailto:culturalplazahi@gmail.com)

### Dole Plantation



The days of pineapple plantations were pivotal for the economic success of Hawaii, and visitors are now given the chance to explore this rich

history. At Dole Plantation, exhibits will tell you more about this far-reaching market, while a gift shop, a snack concession, educational displays and the world's largest maze will serve your entertainment.

Photo: Mariamichelle/Pixabay.com (image cropped)  
Address: 64-1550 Kamehameha Highway - Wahiawa, HI  
Opening hours: Open daily from 9h30 - 17h30  
Phone: +1 808 621 8408  
Internet: [www.doleplantation.com](http://www.doleplantation.com)  
Email: [admin@doleplantation.com](mailto:admin@doleplantation.com)

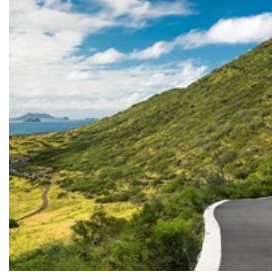
### Foster Botanical Gardens



For peace and relaxation away from the bustle of tourist areas, head to the Foster Botanical Gardens and walk among a variety of placating bromeliads, orchids and other tropical plants. Many of the trees are still in residence from 1853, when Queen Kalama leased a portion of her land.

Photo: Hulabear/Shutterstock.com  
Address: 180 North Vineyard Boulevard - Honolulu, HI  
Opening hours: Open daily from 9h - 16h  
Phone: +1 808 768 7135  
Internet: [www.honolulu.gov](http://www.honolulu.gov)  
Email: [hbh@honolulu.gov](mailto:hbh@honolulu.gov)  
More Info: Free guided tours are offered every day at 10h30, and reservations are recommended

### Kaiwi Shoreline Trail



This 1-mile hike at Kaiwi State Scenic Shoreline Park takes visitors over beautiful hills to the historic Makapu'u lighthouse, and it always provides places for having a break and for admiring the breathtaking scenery. During the winter months, it is possible to view humpback whales during their long migrations.

Photo: E.J.Johnson Photography/Shutterstock.com  
Address: Kaiwi State Scenic Shoreline Park - Honolulu, HI  
Opening hours: From April 1 to the first Monday of September: 7h - 19h45. From September to March 31: 7h - 18h45  
Internet: [www.dlnr.hawaii.gov/dsp/parks/oahu/kaiwi-state-scenic-shoreline](http://www.dlnr.hawaii.gov/dsp/parks/oahu/kaiwi-state-scenic-shoreline)  
Email: [dlnr@hawaii.gov](mailto:dlnr@hawaii.gov)

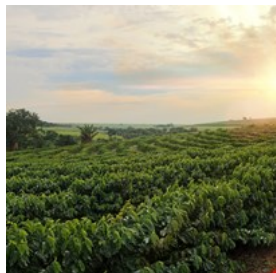
### Shangri La



This beautiful former home of Doris Duke is now a museum housing the Foundation for Islamic Art, which promotes the study and understanding of Islamic arts and cultures. Book a guided tour for exploring the five acre complex with the house itself, a playhouse, a pool, courtyards, terraces, gardens, and water feature. Access to Shangri La is by reservation or business appointment only.

Photo: Daderot./Wikimedia Commons (image cropped)  
Address: 4055 Papu Circle - Honolulu, HI  
Phone: +1 808 734 1941  
Internet: [www.shangrilahawaii.org](http://www.shangrilahawaii.org)  
Email: [shangrilahawaii@ddcf.org](mailto:shangrilahawaii@ddcf.org)  
More Info: Guided tours at Shangri La are offered regularly Wednesday through Saturday at 9h, 10h30, 13h30. Tickets must be reserved in advance

### Green World Coffee Farm



On this 7-acre farm, 2,000 arabica coffee trees grow out of green beans from all over the Hawaiian islands. While free samples of at least 5 varieties of coffee are always available in the store, and you can also enjoy a fresh cup at the espresso bar. However, do not forget to go on a self-guided tour to learn more about the production on the farm itself.

Photo: Andre Nery/Shutterstock.com

Address: 71-101 North Kamehameha Highway - Wahiawa, HI  
Opening hours: Mon - Thu 6h - 17h, Fri 6h - 18h, Sat - Sun 7h - 18h

Phone: +1 808 622 2326

Internet: [www.greenworldcoffeefarm.com](http://www.greenworldcoffeefarm.com)

Email: [admin@greenworldcoffeefarm.com](mailto:admin@greenworldcoffeefarm.com)

### Lyon Arboretum



The Harold L. Lyon Arboretum is 200-acre of real nature rather than a cosmetically designed and landscaped garden. On the trails winding through this impressive scenery, you can find some of the most representative Hawaiian plants and trees, such as breadfruit and sugarcane, so do go here for a lovely and relaxing stroll.

Photo: Lisa Strachan/Shutterstock.com

Address: 3860 Manoa Road - Honolulu, HI  
Opening hours: Mon - Fri 8h - 16h, Sat 9h - 15h  
Phone: +1 808 988 0456

Internet: [www.manoa.hawaii.edu/lyonarboretum](http://www.manoa.hawaii.edu/lyonarboretum)

More Info: All visitors are required to sign in at the Visitor Center.

### DINING



*oatako/Shutterstock.com*

The cuisine of Oahu has naturally been influenced by its surroundings - seafood, therefore, plays a large part in the local cuisine, complemented by excellent roast meats (the traditional kalua pork should not be missed), as well as by daring Asian influences. Dishes are served with a wide range of fresh fruits and vegetables including the local root vegetable taro, which is usually mashed to turn poi, a staple in the Hawaiian cuisine.

### Chef Mavro



Chef Mavro serves exquisite contemporary Hawaiian cuisine that will make you come back for more. French technique is paired with global flavors and local ingredients, and the menu changes quarterly, while every dish (including dessert) is matched with a select wine.

Photo: IVASHstudio/Shutterstock.com

Address: 1969 South King Street - Honolulu, HI  
Opening hours: Tue - Sat 18h - 21h  
Phone: +1 808 944 4714

Internet: [www.chefmavro.com](http://www.chefmavro.com)

Email: [chef@chefmavro.com](mailto:chef@chefmavro.com)



### Chef Chai



Chef Chai is claimed as one of Hawaii's top Hawaii Regional Cuisine chefs, and his menu fuses fresh Hawaii ingredients with flavors from Asia in

order to celebrate Oahu's cultural diversity. Chai's restaurants have been praised and recommended by Bon Appetite, Brides, Sunset, Cooking Light, Travel & Leisure, Gourmet Magazine, and many more, so do have a try and discover its flavors for yourself.

Photo: Yuriy Golub/Shutterstock.com

Address: 1009 Kapiolani Boulevard - Honolulu, HI

Opening hours: Tue - Sun 16h - 22h

Phone: +1 808 585 0011

Internet: [www.chefchai.com](http://www.chefchai.com)

Email: [chefchai@outlook.com](mailto:chefchai@outlook.com)

### Tangö Contemporary Cafe



Finnish chef Göran Streng nods to his heritage with a clean and trendy setting in his cafe, where you can enjoy a clever and eclectic

cuisine blending Scandinavian, Asian, Hawaiian and American classics. Featuring fresh, natural, and house-made ingredients, you can savor excellent dishes all day long since they are open for breakfast, brunch, lunch and dinner.

Photo: Foxys Forest Manufacture/Shutterstock.com

Address: 1288 Ala Moana Boulevard, Suite 120 - Honolulu, HI

Opening hours: Mon, Sat 8h - 14h, 17h - 21h30, Tue - Fri 7h - 10h, 11h - 16h, 17h - 21h30, Sun 8h - 14h

Phone: +1 808 593 7288

Internet: [www.tangocafehawaii.com](http://www.tangocafehawaii.com)

Email: [tango.hokua@gmail.com](mailto:tango.hokua@gmail.com)

### Buzz's Steakhouse



Tiki style steakhouse featuring a surf 'n' turf menu and a variety of cocktails. Buzz's just happens to be former

U.S. President Barack Obama favorite eatery whenever he is in Hawaii, so come see for yourself what the "buzz" is all about.

Photo: T photography/Shutterstock.com

Address: 413 Kawailoa Road - Kailua, HI

Opening hours: Sun - Thu 11h - 21h, Fri - Sat 11h - 21h30

Phone: +1 808 261 4661

Internet: [www.buzzsoriginalsteakhouse.com](http://www.buzzsoriginalsteakhouse.com)

### Tanaka of Tokyo West



Situated in the Ala Moana Center, Tanaka is a Japanese restaurant serving a wonderful array of seafood and steak.

Here, your chosen meal is artistically prepared on your table-top grill. A few examples of what's on the menu are lobster tails, scallops, Black Angus sirloin, King salmon, and teriyaki chicken.

Photo: hlphoto/Shutterstock.com

Address: 1450 Ala Moana Boulevard - Honolulu, HI

Opening hours: Open daily from 11h - 14h, 17h - 21h30

Phone: +1 808 945 3443

Internet: [www.tanakaoftokyo.com](http://www.tanakaoftokyo.com)

Email: [tanakarestaurants@gmail.com](mailto:tanakarestaurants@gmail.com)

### Little Village Noodle House



This 'little house' is a trendy restaurant serving delicious home-cooked Chinese dishes. While its history began way back in the 70s when the owners



arrived in Honolulu, straight from China, it still pleases both regulars and newcomers day by day, with fresh food and great service.

Photo: Timolina/Shutterstock.com

Address: 1113 Smith Street - Honolulu, HI

Opening hours: Mon - Thu 10h30 - 22h, Fri - Sun 10h30 - 22h30

Phone: +1 808 545 3008

Internet: [www.littlevillagehawaii.com](http://www.littlevillagehawaii.com)

### Arancino



Arancino is an upscale Italian restaurant serving different typical dishes accompanied with great wines. As cheese, meat, and pasta get imported

all the way from Italy, all the dishes get that specific taste, and they are as authentic as Italian food far away from its source can possibly be.

Photo: Yulia Grigoryeva/Shutterstock.com

Address: 255 Beach Walk, Honolulu

Opening hours: Open daily from 11h30 - 14h30, 17h - 22h

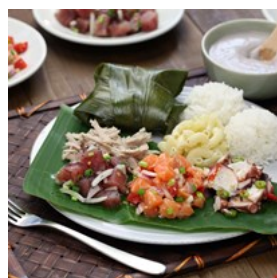
Phone: +1 808 923 5557

Internet: [www.arancino.com/arancino-beachwalk](http://www.arancino.com/arancino-beachwalk)

Email: [info@arancino.com](mailto:info@arancino.com)

More Info: Other Arancino restaurants can be found at the Waikiki Beach Marriott Resort and at The Kahala Hotel & Resort

### Helena's Hawaiian Food



Helena's is a renowned Honolulu diner serving home-cooked specialties such as smoked short ribs pipikaula-style and squid luau. While being a local

favorite for more than 60 years, the restaurant and its chef Helen Kwock Chock received the James Beard Award back in 2000. The restaurant is now run by her grandson, Craig Katsuyoshi.

Photo: bonchan/Shutterstock.com

Address: 1240 North School Street - Honolulu, HI

Opening hours: Tue - Fri 10h - 19h30

Phone: +1 808 845 8044

Internet: [www.helenashawaiianfood.com](http://www.helenashawaiianfood.com)

More Info: Cash only

### Olive Tree Cafe



The Olive Tree is a self-serve Greek restaurant offering taramasalata, falafel, and souvlaki. As it is BYOB (=bring your own booze)

without any corkage fee, this will relieve your budget but increase your Hawaii experience.

Photo: FoodAndPhoto/Shutterstock.com

Address: 4614 Kilauea Avenue - Honolulu, HI

Opening hours: Open daily from 17h - 22h

Phone: +1 808 737 0303

### Kai Market



A regional "farm-to-table" menu and international flavors is what you can expect from Sheraton's Kai Market, as you will find everything from a

prime rib carving station to Chinese-style steamed fish and clams in a ginger-black-bean sauce. Daily open-air luau-style shows take place here as well.

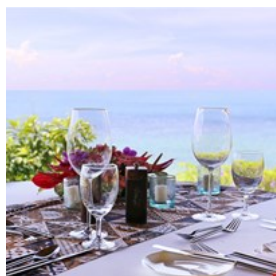
Photo: LIU ANLIN/Shutterstock.com

Address: 2255 Kalakaua Avenue - Honolulu, HI

Opening hours: Open daily from 6h - 11h, 17h30 - 21h30

Phone: +1 808 921 4600

### La Mer



La Mer is arguably the most beautiful dining facility in Oahu, as both art deco and haute-French cuisine reins in evenings of romance. Choose from three prix-fixe options and just enjoy an evening full of elegance and ocean views.

Photo: Lucy Liu/Shutterstock.com

Address: 2199 Kalia Road - Honolulu, HI

Opening hours: Open daily from 17h30 - 21h30

Phone: +1 808 923 2311

Internet: [www.halekulani.com/la-mer-restaurant](http://www.halekulani.com/la-mer-restaurant)

Email: [info@halekulani.com](mailto:info@halekulani.com)

### Opal Thai



This small restaurant started off as a food truck but had to expand in order to keep up with its ever-growing band of loyal customers. While serving delicious Thai food - tom kha soup, green curry, and drunken noodles - the owners are friendly, and they love to help customers pick the right dish based on the client's flavor preferences.

Photo: ARENA Creative/Shutterstock.com

Address: 1030 Smith Street, Suite 6 - Honolulu, HI

Opening hours: Tue - Sat 11h30 - 15h, 17h - 22h

Phone: +1 808 381 8091

Internet: [www.opalthai.com](http://www.opalthai.com)

### The Pig and the Lady



Mixing Vietnamese tradition with island flavors, this restaurant acts as both an unassuming noodle house for the busy lunch crowd by day and a fine dining experience at night. Dishes are daring and flavorful, and they include combinations such as pork chop marinated in spiced guava leaves, and the desserts are equally innovative and delicious.

Photo: hansbui/Shutterstock.com

Address: 83 North King Street - Honolulu, HI

Opening hours: Mon 11h - 15h, Tue - Sat 11h - 15h, 17h30 - 21h30

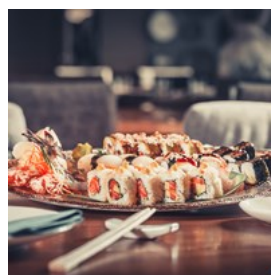
Phone: +1 808 585 8255

Internet: [www.thepigandthelady.com](http://www.thepigandthelady.com)

Email: [info@thepigandthelady.com](mailto:info@thepigandthelady.com)

More Info: The restaurant has another venue at 1200 Ala Moana Boulevard and a food truck at the Farmers Market

### Akasaka



Hawaii's Japanese heritage gets evident, once again, in this tiny sushi bar. While its location might not be the most inviting, the sushi, sashimi, butterfish and other grilled specialties served here most certainly are.

Photo: Volodymyr Goinyk/Shutterstock.com

Address: 1646 Kona Street B - Honolulu, HI

Opening hours: Sun - Thu 11h - 14h30, 17h - 24h, Fri - Sat 11h - 14h30, 17h - 2h

Phone: +1 808 942 4466



### Cholo's Homestyle Mexican



Hawaii's multicultural heritage does not only include Asian and Polynesian influences, and this Mexican restaurant gives visitors

that other side of the Hawaiian melting pot, offering all the fixings you would expect: tacos, fajitas, burritos, enchiladas and much more. Also, the fish tacos are made with the freshest catch, and the margaritas with the juiciest mangoes.

Photo: Joshua Resnick/Shutterstock.com

Address: 66-250 Kamehameha Highway - Haleiwa, HI

Opening hours: Sun - Thu 9h30 - 21h, Fri - Sat 9h30 - 21h30

Phone: +1 808 637 3059

Internet: [www.cholos.mx](http://www.cholos.mx)

Email: [cholos@hawaii.rr.com](mailto:cholos@hawaii.rr.com)

### Hank's Haute Dog



At this beloved restaurant, Chicago-style hot dogs undergo all kinds of transformations, as local and international sausages and toppings

are combined in order to create unique and explosive flavors. Try the wild boar sausage with cran-apple relish or the Hawaiian with Portuguese sausage, mango mustard and pineapple relish.

Photo: Itsra Sanprasert/Shutterstock.com

Address: 324 Coral Street - Honolulu, HI

Opening hours: Mon - Thu 11h - 16h, Fri - Sun 11h - 18h

Phone: +1 808 532 4265

Internet: [www.hankshautedogs.com](http://www.hankshautedogs.com)

Email: [office@hankshautedogs.com](mailto:office@hankshautedogs.com)

### Kua Aina Sandwich



A favorite among locals and tourists since its opening in 1975, Kua Aina, serves huge and immensely savory hand-formed burgers.

From bacon to cheese, to avocado and, of course, Hawaiian pineapple, everything can be added, so this is a treat which should not be missed.

Photo: veryulissa/Shutterstock.com

Address: 66-160 Kamehameha Highway - Haleiwa, HI

Opening hours: Open daily from 11h - 20h

Phone: +1 808 637 6067

Internet: [www.kua-aina.com](http://www.kua-aina.com)

### Sorabol



Sorabol is the largest Korean restaurant in the city, lending to a vast menu of Korean cuisine and sushi favorites. Head here for experiencing

both tasteful Korean dishes and an authentic atmosphere.

Photo: Magdanatka/Shutterstock.com

Address: 805 Keeaumoku Street - Honolulu, HI

Opening hours: Sun - Thu 8h - 1h, Fri - Sat 8h - 8h

Phone: +1 808 947 3113

Internet: [www.sorabolhawaii.com](http://www.sorabolhawaii.com)

Email: [info@sorabolhawaii.com](mailto:info@sorabolhawaii.com)

### Pho To Chau



Specialized in pho noodle soup, Pho To Chau will always be the default Vietnamese restaurant of Oahu, as they were the pioneer Vietnamese

venue on the island. While you will find legions of loyal customers during the week, it also attracts

newcomers each day, so do expect long lines. However, it is worth the wait.

Photo: JoannaTkaczuk/Shutterstock.com  
Address: 1007 River Street - Honolulu, HI  
Opening hours: Open daily from 9h - 14h30  
Phone: +1 808 533 4549

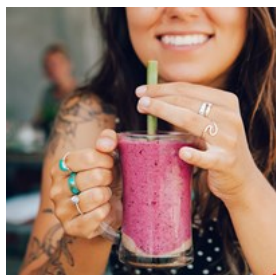
## CAFES



Rattiya Thongdumhyu/Shutterstock.com

Coffee culture is on the rise in Oahu, and skilled baristas can whip up special coffees for any taste. So, sit down and savour a coffee while also enjoying the most spectacular atmospheres. Let the gentle sea breeze caress your face, while the fragrance of the colourful flowers soothe your soul, and the views of the Pacific Ocean tantalise your imagination.

### Heavenly Island Lifestyle



Farm-to-table cafe serving Hawaiian dishes made with local and organic produce in a colourful island setting. Very popular breakfast

and brunch spot.

Photo: zjuzjaka/Shutterstock.com  
Address: 342 Seaside Avenue - Honolulu, HI  
Opening hours: Open daily from 6h30 - 23h  
Phone: +1 808 923 1100  
Internet: [www.heavenly-waikiki.com](http://www.heavenly-waikiki.com)  
Email: [mild@zetton.co.jp](mailto:mild@zetton.co.jp)

### Hiking Hawaii Cafe



Located underneath the Doubletree Alana Hotel, this cafe is kind of a hidden gem of Waikiki. Serving fresh and healthy fare at a laid back and friendly atmosphere, this is a great place to start your day before hitting the great outdoors. On their menu, you'll also find non-dairy drinks as well as vegan snacks.

Photo: antoniodiaz/Shutterstock.com  
Address: 1956 Ala Moana Boulevard - Honolulu, HI  
Opening hours: Open daily from 7h - 15h  
Phone: +1 808 445 1717  
Internet: [www.hikinghawaii808.com](http://www.hikinghawaii808.com)  
Email: [hikinghawaii@yahoo.com](mailto:hikinghawaii@yahoo.com)

### Tea at 1024

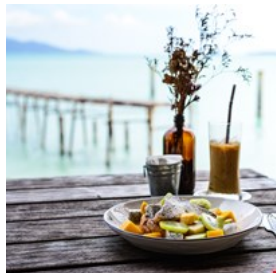


For a unique tea experience, head to Tea at 1024. Once voted Best Afternoon Tea in Hawaii, this quaint little tea shop offers you the perfect English tea experience with a Hawaiian touch. While they prepare your tea, why not go all out and choose a hat and a feather boa for delighting in the quirky and fun atmosphere?

Photo: AlexandriaBryjak/Shutterstock.com  
Address: 1024 Nuuanu Avenue - Honolulu, HI  
Opening hours: Wed - Fri 11h - 13h, Sat - Sun 11h - 15h  
Phone: +1 808 521 959 6  
Internet: [www.teaat1024.net](http://www.teaat1024.net)  
Email: [teaat1024@mac.com](mailto:teaat1024@mac.com)



### Veranda at the Beachhouse



As Veranda is located at the Moana Surfrider hotel, this cafe is surrounded by elegant Victorian architecture right by the shores of

Waikiki. Sit back and enjoy breakfast, lunch or the classic afternoon tea under the shade of an imposing Banyan tree, and your day could not have started any better.

Photo: Supreecha Samansukumal/Shutterstock.com

Address: 2365 Kalakaua Avenue - Honolulu, HI

Opening hours: Open daily from 6h - 10h30, 11h30 - 24h

Phone: +1 808 921 4600

### Island Vintage Coffee



Island Vintage Coffee Company carries 100% gourmet Kona coffee, so they only feature the finest coffee beans chosen from volcanic

soils of Hawaii. While having a coffee is almost mandatory, trying their tasty poke and açaí bowls as well as their sandwiches will also enrich your stay (and day).

Photo: zjuzjaka/Shutterstock.com

Address: 2301 Kalakaua Ave, Honolulu

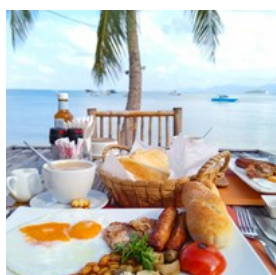
Opening hours: Open daily from 6h - 23h

Phone: +1 808 926 5662

Internet: [www.islandvintagecoffee.com](http://www.islandvintagecoffee.com)

Email: [info@islandvintagecoffee.com](mailto:info@islandvintagecoffee.com)

### Barefoot Beach Cafe



Barefoot Beach is a safe bet for breakfast, especially when it comes to thinking of your budget. However, do also head here for lunch and

dinner. Located right at the beach, they do not only serve great menus but also a wonderful atmosphere, hold up by tiki torches after nightfall.

Photo: Hanna Summer/Shutterstock.com

Address: 2699 Kalakaua Avenue - Honolulu, HI

Opening hours: Open daily from 7h - 20h30

Phone: +1 808 924 2233

Internet: [www.barefootbeachcafe.com](http://www.barefootbeachcafe.com)

Email: [info@barefootbeachcafe.com](mailto:info@barefootbeachcafe.com)

### Honolulu Coffee at Moana Surfrider



Located at the Moana Surfrider Resort & Spa in Waikiki Beach, the Surfrider Cafe is a trendy breakfast and lunch spot. They serve healthy dishes

at its beachfront location, and you will find a variety of specialty coffees, island fruit bowls, salads, freshly prepared lunch dishes and sandwiches on the menu.

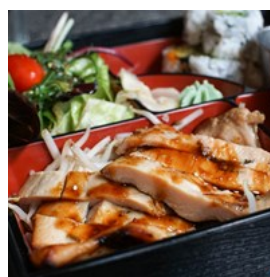
Photo: Natalie magic/Shutterstock.com

Address: 2365 Kalakaua Avenue - Honolulu, HI

Opening hours: Open daily from 7h - 16h30

Phone: +1 808 922 3111

### Sugoi Bento & Catering



Sugoi Bento is a breakfast-and-lunch Japanese diner known for their fast service, delicious food and big portions, so make sure

you're hungry when you walk in here. Although their atmosphere does invite you to stay, do (also) build your own bento (=take-out portion) and don't leave without trying their famous crispy and tender garlic chicken, you will not be disappointed.

Photo: Tobin C/Shutterstock.com

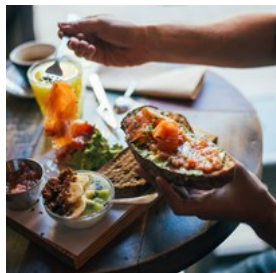
Address: 1286 Kalani Street, B-106 - Honolulu, HI

Opening hours: Open daily from 8h - 15h

Phone: +1 808 841 7984

Internet: [www.sugoihawaii.com](http://www.sugoihawaii.com)

### Cinnamon's



Specialized in breakfast and brunch foods, the dishes here strive to be fresh and free from chemicals, preservatives and additives, providing

wholesome and balanced meals. Although its name implicates sweet treats, you will also find savory dishes on their menu.

Photo: De Repente/Shutterstock.com

Address: 315 Uluniu Street - Kailua, HI

Opening hours: Open daily from 7h - 14h

Phone: +1 808 261 8724

Internet: [www.cinnamons808.com](http://www.cinnamons808.com)

Email: [cinnamonsrest@aol.com](mailto:cinnamonsrest@aol.com)

### BARS & NIGHTLIFE



*oneinchpunch/Shutterstock.com*

After soaking up the sun or pounding the surf all day long, it is time for hitting the town and trying the famous Mai Tai cocktail – dive in, kick back, and enjoy the ‘aloha’ vibe. If the Mai Tai’s have hit their mark and your feet begin to dance, then head out to one of Honolulu’s many clubs or experience the Hawaiian culture by catching a show or by devouring a luau buffet.

### Polynesian Cultural Center Luau



The Polynesian Cultural Center hosts an amazing luau and buffet six nights a week, and it also offers a show entitled "Ha: Breath of Life." As this

luau and the show are widely considered to be one of the most authentic experiences visitors can have of Hawaiian tradition and culture, make sure you do not miss it.

Photo: Deborah Kolb/Shutterstock.com

Address: 55-370 Kamehameha Highway - Laie, HI

Opening hours: Mon - Sat 12h - 21h

Phone: +1 800 367 7060

Internet: [www.polynesia.com/dining](http://www.polynesia.com/dining)

Email: [customercare@polynesia.com](mailto:customercare@polynesia.com)

More Info: Opening hours of the luau vary so do check them on their website

### Hanks Cafe Honolulu



Local dive bar featuring live contemporary Hawaiian music while serving great drinks in a very friendly atmosphere. As the owner Hank

Taufaasau describes it, he "opened it as an art gallery to showcase my paintings and prints. But I put the bar in to pay the rent. Artists starve!" but here no one will.

Photo: Thitinun Lerdkijsakul/Shutterstock.com

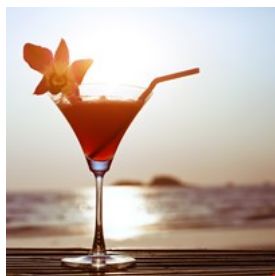
Address: 1038 Nuuanu Avenue - Honolulu, HI

Opening hours: Mon - Sat 13h - 2h, Sun 13h - 24h

Phone: +1 808 526 1410



### Mai Tai Bar



If you're looking for a place to start into the night (and maybe stay), stop by this award-winning rooftop bar. When night falls, you get to enjoy island-style live music while sipping cocktails like Cucumber Melon Crush, Mango Mai Tai, and Mandarin Sweet Tea Cooler.

Photo: Ditty\_about\_summer/Shutterstock.com  
Address: 1450 Ala Moana Boulevard, Suite 3247, Honolulu  
Opening hours: Daily 11am-1am  
Phone: +1 808 947 2900  
Internet: [www.maitaibar.com](http://www.maitaibar.com)

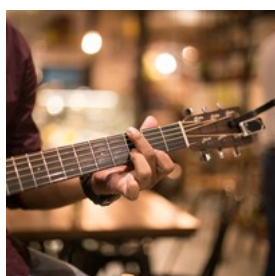
### Duke's Waikiki



This lively beachfront bar serves in the memory of Duke Kahanamoku who was the legendary Waikiki surfer, winning Olympic medals in swimming and introducing surfing to Australia and New Zealand. Head here for some drinks and for learning more about this legend.

Photo: Maira Tessa/Shutterstock.com  
Address: 2335 Kalakaua Ave, Honolulu  
Opening hours: Daily 7am-11pm  
Phone: +1 808 922 2268  
Internet: [www.dukeswaikiki.com](http://www.dukeswaikiki.com)

### O'Toole's Irish Pub



Located near Brewer's Wharf, O'Toole's is a small pub with a big atmosphere. A great place to grab a drink with your friends, watch some sports, and listen to live music from local bands. Be advised that smoking is allowed inside.

Photo: Bignai/Shutterstock.com  
Address: 902 Nuuanu Avenue - Honolulu, HI  
Opening hours: Open daily from 10h - 2h  
Phone: +1 808 536 4138  
Email: [questions@otoolesirishpub.com](mailto:questions@otoolesirishpub.com)

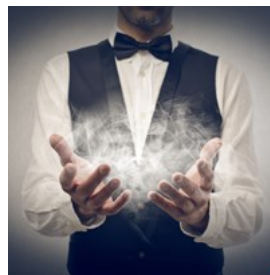
### Nextdoor



Nextdoor is a underground and funky club located in vibrant Chinatown playing an eclectic range of music, from dance over electro to reggae. As this club also features local and international talents, you may even discover new trends here.

Photo: Pressmaster/Shutterstock.com  
Address: 43 North Hotel Street - Honolulu, HI  
Opening hours: Wed - Thu 20h - 2h, Fri - Sat 21h - 2h  
Phone: +1 808 200 4470  
Internet: [www.nextdoorhi.com](http://www.nextdoorhi.com)  
Email: [michael@nextdoorhi.com](mailto:michael@nextdoorhi.com)

### Magic of Polynesia



Illusionist John Hirokawa has created a show unlike anything else on the Hawaiian islands, as this highly entertaining event contains sleight of hand magic and death-defying illusions as well as contemporary hula and Island music acts. Dramatic special effects and mesmerizing Polynesian fire knife performances will perfect your experience that you will not forget that fast, or maybe never.

Photo: Ollyy/Shutterstock.com  
Address: 2300 Kalakaua Avenue - Honolulu, HI  
Opening hours: Open daily from 8h - 21h  
Phone: +1 808 971 4321  
Internet: [www.magicofpolynesia.org](http://www.magicofpolynesia.org)  
Email: [customerservice@robertshawaii.com](mailto:customerservice@robertshawaii.com)

More Info: The showroom is located at the Holiday Inn Waikiki Beachcomber Hotel

### Sharkey's Comedy Club

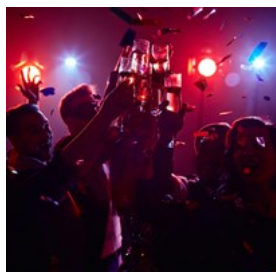


For a bit of a different night out, stop by the Sharkey's Comedy Club in Waikiki for enjoying live stand-up comedy on Tuesdays and Saturdays.

While local comedians delight audiences with their observational humor, the staff provides you with everything you need.

Photo: totojang1977/Shutterstock.com  
Address: 2055 Kalia Road - Honolulu, HI  
Opening hours: Tue and Sat 20h - 23h  
Phone: +1 808 531 4242  
Internet: [www.sharkeyscomedyclub.com](http://www.sharkeyscomedyclub.com)  
Email: [info@sharkeyscomedyclub.com](mailto:info@sharkeyscomedyclub.com)

### Hulas Bar and Lei Stand



Hula's is Hawaii's oldest and best-known gay-friendly nightspot. Enjoy the view of Diamond Head and Waikiki beach during the

day and head over to the dance floor during the night for some drag shows, male dancers and songs from past patrons including Elton John, Adam Lambert and Dolly Parton.

Photo: Pressmaster/Shutterstock.com  
Address: 134 Kapahulu Avenue - Honolulu, HI  
Opening hours: Open daily from 10h - 2h  
Phone: +1 808 923 0669  
Email: [contact@hulas.com](mailto:contact@hulas.com)  
More Info: Located inside the Waikiki Grand Hotel

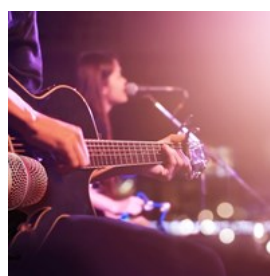
### Boardriders Bar & Grill



Designed as a cool and laid-back surfers' bar, this venue includes a pool table, dartboards, plenty of large TVs for watching sports, and of course, delicious and refreshing drinks. However, the main attraction here is the live music every Friday and Saturday, and the performers are usually local bands playing rock or reggae.

Photo: Evannovostro/Shutterstock.com  
Address: 201 Hamakua Drive, Suite A - Kailua, HI  
Opening hours: Mon - Sat 11h - 2h, Sun 6h45 - 2h  
Phone: +1 808 261 4600  
Email: [brianboardriders@gmail.com](mailto:brianboardriders@gmail.com)

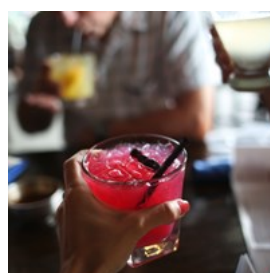
### The Dragon Upstairs



Small and cozy bar just above Hank's Cafe offering live jazz music, a laid back atmosphere and great service. A good place to relax after a long day in the sun. Also, as it is located in the heart of Chinatown, many food options are nearby.

Photo: PopTika/Shutterstock.com  
Address: 1038 Nuuanu Avenue - Honolulu, HI  
Opening hours: Mon - Sat 18h - 2h  
Phone: +1 808 526 1411

### Wai'olu Ocean Cuisine



Boasting breathtaking sunset views and a sophisticated vibe, the Wai'olu Ocean View Lounge at the Trump International Hotel is one of the spiffiest places in town. World class cuisine, live music and good drinks, including the World's Best Mai Tai are sure to make your

night even more special.

Photo: N K/Shutterstock.com

Address: 223 Saratoga Road - Honolulu, HI

Opening hours: Open daily from 11h - 23h

Phone: +1 808 683 7456

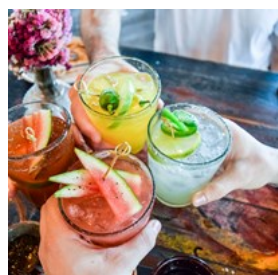
Internet:

[www.trumphotels.com/waikiki/dining/honolulu-restaurants](http://www.trumphotels.com/waikiki/dining/honolulu-restaurants)

Email: [waiolu@trumphotels.com](mailto:waiolu@trumphotels.com)

More Info: Live Entertainment: Every Thursday, Friday & Saturday Nights

### Genius Lounge Sake Bar & Restaurant



The intimate and candle-lit ambiance at Genius Lounge is sophisticated but laid-back and, as it is very inviting, regularly

attracts locals and tourists alike. Their menu offers a wide selection of cocktails and sake, as well as Japanese-inspired dishes and Hawaiian fare.

Photo: Cabeca de Marmore/Shutterstock.com

Address: 346 Lewers St, Honolulu

Opening hours: Open daily from 18h - 2h

Phone: +1 808 626 5362

Internet: [www.geniusloungehawaii.com](http://www.geniusloungehawaii.com)

Email: [info@geniusloungehawaii.com](mailto:info@geniusloungehawaii.com)

## SHOPPING



*gpointstudio/Shutterstock.com*

If you are looking for souvenirs or just a little self-indulgent shopping therapy, then Honolulu has everything you could possibly desire. From the bustle of the marketplace to the refined shopping experience of the designer boutique, Honolulu caters to all and everything. However, local shops tend to specialize in designer and vintage items and knickknacks, making Oahu a perfect place to shop for unique gifts.

### Luxury Row



Luxury Row brings the latest high fashion and luxury items to the island of Oahu. Offering luxury brands including Chanel, Coach, Tiffany & Co, Yves Saint Laurent, Bottega Veneta, Gucci, and Hugo Boss. As the center is located in the heart of the Waikiki beach resort and urban retail district, you probably do not even have to travel far.

Photo: [welcomia/Shutterstock.com](https://www.welcomia.com)

Address: 2100 Kalakaua Avenue - Honolulu, HI

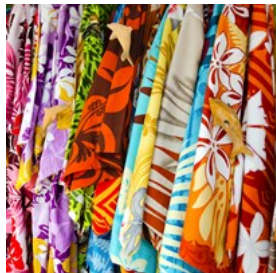
Opening hours: Open daily from 10h - 22h

Phone: +1 808 922 2246

Internet: [www.luxuryrow.com](http://www.luxuryrow.com)



### Hilo Hattie



Hilo Hattie at the Moana shopping center is Honolulu's best destination for Hawaiian fashion, gifts, souvenirs, home and beach

accessories, beauty products, gourmet foods and stunning island jewelry. In fact, you can get almost everything here, so this is where tourists in the know go to get that Hawaiian shirt that visitors simply have to take back home.

Photo: ChameleonsEye/Shutterstock.com

Address: 1450 Ala Moana Boulevard, Suite 1254 - Honolulu, HI

Opening hours: Mon - Sat 9h30 - 21h, Sun 10h - 19h

Phone: +1 808 973 3266

Internet: [www.hilohattie.com](http://www.hilohattie.com)

Email: [info@hilohattie.com](mailto:info@hilohattie.com)

### Ala Moana Center



Ala Moana is the world's largest open-air shopping mall, hosting over 240 stores and 60 restaurants in the 50-acre complex and, thus, an impressive

blend of international, national, and local boutiques. Gucci, Louis Vuitton, Christian Dior, and Armani are some of the brands located on site but you can also experience many more.

Photo: Bobex-73/Shutterstock.com

Address: 1450 Ala Moana Boulevard - Honolulu, HI

Opening hours: Mon - Sat 9h30 - 21h, Sun 10h - 19h

Phone: +1 808 955 951 7

Internet: [www.alamoanacenter.com](http://www.alamoanacenter.com)

### Aloha Tower Marketplace



The Aloha Tower Marketplace is a lively waterfront market featuring restaurants, entertainment venues, shops, and kiosks. Go

here for experiencing a vibrant and colorful shopping experience and take home some souvenirs.

Photo: Johnny Silvercloud/Flickr.com (image cropped)

Address: 1 Aloha Tower Drive - Honolulu, HI

Public Transport: It is accessed from Waikiki via the E-Transit bus, which goes along bus routes every 15 minutes

Opening hours: Mon - Sat 9h - 21h, Sun 9h - 18h

Phone: +1 808 544 1453

Internet: [www.alohatower.com](http://www.alohatower.com)

Email: [alohatower@hpu.edu](mailto:alohatower@hpu.edu)

### Tin Can Mailman



Tin Can Mailman is a vintage shop in Chinatown, full of Hawaiiana and memorabilia, from

pinup girls to clothes and jewelry. Browsing through the huge selection of items is like turning back time to see a Hawaii from long ago that indeed knows how to compete with the current one.

Photo: DutchScenery/Shutterstock.com

Address: 1026 Nuuanu Avenue, Suite 1A - Honolulu, HI

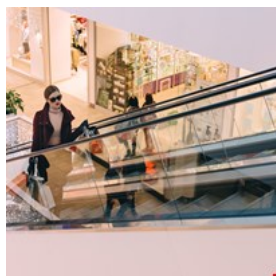
Opening hours: Mon - Fri 11h - 17h, Sat 11h - 16h

Phone: +1 808 524 3009

Internet: [www.tincanmailman.net](http://www.tincanmailman.net)

Email: [tincan.mailman@hawaii.rr.com](mailto:tincan.mailman@hawaii.rr.com)

### T-Galleria



Three level shopping center offering good deals on high-end designer brands. For handbags, cosmetics, clothes and many more

duty-free goods, head to T-Galleria in Waikiki.

Photo: StockSnap/Pixabay.com (image cropped)

Address: 330 Royal Hawaiian Avenue - Honolulu, HI

Opening hours: Open daily from 9h30 - 23h

Phone: +1 808 931 2700

Internet: [www.dfs.com/en/hawaii](http://www.dfs.com/en/hawaii)

### Global Village



At this beloved boutique, the eclectic selection of apparel and handcrafted one-of-a-kind jewelry, fashion, gifts and accessories from around

the globe regularly changes and, thus, always stays exciting. The family-run business supports local designers and manufacturers, as well as green businesses, therefore it became a real local's favorite.

Photo: Africa Studio/Shutterstock.com

Address: 539 Kailua Road, Suite 104 - Kailua, HI

Opening hours: Mon - Sat 9h - 19h, Sun 10h - 17h

Phone: +1 808 262 8183

Internet: [www.globalvillagehawaii.com](http://www.globalvillagehawaii.com)

Email: [info@globalvillagehawaii.com](mailto:info@globalvillagehawaii.com)

### Kahala Mall



First mall ever built in Hawaii, small in size compared to the other shopping centers, but you'll still find pretty much anything you need

and at slightly cheaper prices. From anchor

stores to local boutiques, plus a variety of eateries and a movie theater.

Photo: nd3000/Shutterstock.com

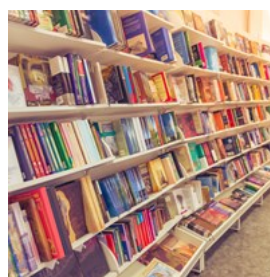
Address: 4211 Waialae Avenue - Honolulu, HI

Opening hours: Mon - Sat 10h - 21h, Sun 10h - 18h

Phone: +1 808 732 7736

Internet: [www.kahalamallcenter.com](http://www.kahalamallcenter.com)

### Bookends In Kailua



This independent neighborhood bookstore has a quaint and familiar feel to it. As all the walls are lined with both new and used books, and the

large children's section invites families to come and linger for a good while, browsing through the extensive selection is always a great experience here.

Photo: George Rudy/Shutterstock.com

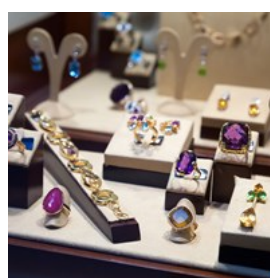
Address: 600 Kailua Road, Suite 126 - Kailua, HI

Opening hours: Mon - Sat 9h - 20h, Sun 9h - 17h

Phone: +1 808 261 1996

Email: [kailuabook@aol.com](mailto:kailuabook@aol.com)

### North Shore Marketplace



North Shore is an open-air plaza housing art galleries, clothing stores, and a surf museum.

Moreover, Jungle Gems is located here, with its

precious and semiprecious gemstone jewelry that you do not want to miss out. The Silver Moon Emporium is another local favorite.

Photo: Iakov Filimonov/Shutterstock.com

Address: 66-250 Kamehameha Highway D203 - Haleiwa, HI

Opening hours: Open daily from 9h - 19h

Phone: +1 808 637 4416

Internet: [www.northshoremarketplace.shop](http://www.northshoremarketplace.shop)

### Royal Hawaiian Center



The Royal Hawaiian Center composes a three-block radius with more than 100 stores and restaurants, including local stores Aloha Aina

Boutique, Honolulu Home Collection, and Koi Boutique. Head here for an authentic shopping and dining experience.

Photo: Sonpichit Salangsing/Shutterstock.com

Address: 2201 Kalakaua Avenue - Honolulu, HI

Opening hours: Open daily from 10h - 22h

Phone: +1 808 922 2299

Internet: [www.royalhawaiiancenter.com](http://www.royalhawaiiancenter.com)

Email: [media@royalhawaiiancenter.com](mailto:media@royalhawaiiancenter.com)

### Aloha Stadium Swap Meet & Marketplace



On Wednesdays, Saturdays and Sundays, the parking lot of the Aloha Stadium becomes a huge marketplace, where vendors push everything

from Hawaiian themed clothes, accessories and souvenirs to ethnic food, silk flowers and other decorations. If you're patient and search thoroughly you can come across really unique items.

Photo: goodluz/Shutterstock.com

Address: Aloha Stadium - Aiea, HI

Opening hours: Wed, Sat, Sun 8h - 15h

Phone: +1 808 486 6704

Internet: [www.alohastadiumswapmeet.net](http://www.alohastadiumswapmeet.net)

Email: [alohaswapmeet@centerplate.com](mailto:alohaswapmeet@centerplate.com)

More Info: There is a small admission charge

### Waikale Premium Outlets



At the Waikale Premium Outlets, you'll find your favorite brands at exclusive prices, this is the place where you can shop till you drop. From

clothes and shoes to bags and jewelry. Plus, a few eateries for when you decide to take a break from all the shopping.

Photo: Ivanko80/Shutterstock.com

Address: 94-790 Lumiaina Street - Waipahu, HI

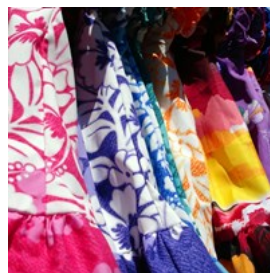
Opening hours: Mon - Sat 9h - 21h, Sun 10h - 18h

Phone: +1 808 676 5656

Internet: [www.premiumoutlets.com/outlet/waikale](http://www.premiumoutlets.com/outlet/waikale)

Email: [jherrington@simon.com](mailto:jherrington@simon.com)

### Under A Hula Moon



A quaint little shop selling Hawaiian souvenirs, handcrafted gifts, as well as an eclectic assortment of home decor, clothes,

Hawaiian quilts and framed prints.

Photo: Cloudia Spinner/Shutterstock.com

Address: 600 Kailua Road, Suite 116 - Kailua, HI

Opening hours: Mon - Sat 9h30 - 18h, Sun 10h - 17h

Phone: +1 808 261 4252

### Waikiki Beach Walk



At the Beach Walk, 70 locally owned stores and restaurants greet eager shoppers and invite them to purchase one (or more) bargains. From stores

like Mahina and Under the Koa Tree to many souvenir shops, everything can be found here. Weekly events also take place at this open-air mall such as concerts, yoga classes and hula



performances.

Photo: Bobex-73/Shutterstock.com

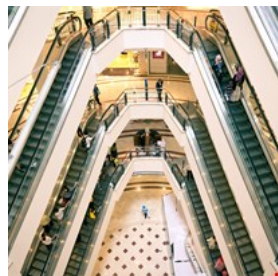
Address: 227 Lewers Street - Honolulu, HI

Opening hours: Open daily from 10h - 22h

Phone: +1 808 931 3591

Internet: [www.waikikibeachwalk.com](http://www.waikikibeachwalk.com)

### Waikiki Shopping Plaza



For an upscale shopping and dining experience, pay a visit to the Waikiki Shopping Plaza, a six-floor shopping center featuring unique restaurants, exclusive boutiques as well as many famous and well known shops.

Photo: Elena Ermakova/Shutterstock.com

Address: 2250 Kalakaua Avenue - Honolulu, HI

Opening hours: Open daily from 9h30 - 22h

Phone: +1 808 923 1191

Internet: [www.waikikishoppingplaza.com](http://www.waikikishoppingplaza.com)

### Lanikai - Bath and Body



The products for sale at Lanikai comprise everything for health, hygiene and beauty: from creams, lotions and soaps to bath salts and scrubs.

All products are made in Hawaii, using natural ingredients and extracts from all sorts of natural sources, including fruits, nuts and weeds.

Photo: fiphoto/Shutterstock.com

Address: Kailua Shopping Center - Kailua, HI

Opening hours: Mon - Fri 10h - 18h, Sat 10h - 17h, Sun 10h - 16h

Phone: +1 808 262 3260

Internet: [www.lanikaibathandbody.com](http://www.lanikaibathandbody.com)

Email: [info@lanikaibathandbody.com](mailto:info@lanikaibathandbody.com)

### Ward Village



The Ward Village is its own and self-sustaining entertainment and shopping destination. A five-mall complex with more than 130 specialty shops and 40 eateries. In addition, it also hosts 16 screen movie theater, so you can easily spend a whole day here.

Photo: StockLite/Shutterstock.com

Address: 1240 Ala Moana Boulevard, Suite 200 - Honolulu, HI

Opening hours: Mon - Sat 10h - 21h, Sun 10h - 18h

Phone: +1 808 591 8411

Internet: [www.wardvillage.com](http://www.wardvillage.com)

Email: [marketing@wardvillage.com](mailto:marketing@wardvillage.com)

### TOURIST INFORMATION



Kelly Headrick/Shutterstock.com

### Passport / Visa



Citizens of the Schengen countries, the United Kingdom, Ireland, Canada, Australia, New Zealand, Singapore, Japan, South Korea,

Taiwan and the Kingdom of Brunei can visit the United States for up to 90 days without applying for a visa (as well as citizens of Andorra,

Lichtenstein, Monaco and San Marino). Citizens of these countries must obtain an ESTA (Electronic System for Travel Authorization) before traveling. All other travelers must obtain a visa before visiting the United States. International travelers need a passport that is valid for at least 3 months after the end of their intended trip in order to enter the country.

Photo: TukTuk Design/Shutterstock.com

### Best Time to Visit



Oahu has great weather all year round and it is thus considered to be one of Hawaii's best islands. However, the winter from November until March

can be more rainy, especially on the island's east coast, so this season can be considered as a less popular one with visitors. While the winter offers best chances for whale watching, the period between May and September is the warmest, and thus tourists' favorite. Do consider travelling in off-season periods, as prices will be lower and both sights and streets less crowded.

Photo: VectorA/Shutterstock.com

### Honolulu Airport



Daniel K. Inouye International Airport in Honolulu is located approximately 2 miles (3 km) from Downtown Honolulu. Bus numbers

19 and 20 run from the airport to Downtown Honolulu and then on to Waikiki from 5h - 23h45.

Robert's Hawaii (1 (866) 898-2523 | Reservations: (808) 439-8800) operates a shuttle

bus from the airport to any hotel in Waikiki, and another option is Oahu Airport Shuttle (tel: +1 808 681 8181): [www.oahuairportshuttle.com](http://www.oahuairportshuttle.com).

There are also a number of taxi services waiting outside the terminal.

Photo: Juan Garces

Address: 300 Rodgers Boulevard - Honolulu, HI

Phone: +1 808 836 6411

Internet: [www.airports.hawaii.gov/hnl/](http://www.airports.hawaii.gov/hnl/)

### Public Transport



Waikiki Trolley, the local transport service, has 40 drop off points between Downtown Honolulu, Waikiki, and Hanauma Bay, and they run

regularly. You can buy single tickets as well as 1, 4 or 7 day passes, and they will allow you to take every bus and even a ride at Double Deckers.

Photo: Pierre-Luc Auclair

Address: 330 Royal Hawaiian Avenue - Honolulu

Phone: +1 808 593 2822

Internet: [www.waikikitrolley.com](http://www.waikikitrolley.com)

Email: [aloha@waikikitrolley.com](mailto:aloha@waikikitrolley.com)

### Motorbike / Bicycle Rental



From Harleys to mountain bikes or whatever suits you best, the Big Kahuna Motorcycle Rentals provides you with all

kinds of mobility devices.

Photo: PATIWIT HONGSANG/Shutterstock.com

Address: 407 Seaside Avenue - Honolulu, HI

Phone: +1 808 924 2736

Internet: [www.bigkahunarentals.com](http://www.bigkahunarentals.com)

Email: [info@bigkahunarentals.com](mailto:info@bigkahunarentals.com)

## Taxi



There are several taxi services operating across the island, and Charley's Taxi is one of the most known. However, there are other ones

recommendable as well:

Honolulu Taxi Service  
750 Amana Street - Honolulu  
+1 808 699 9999

Kailua Coast Taxi  
200 Kuulei Road, Kailua  
+1 808 261 3755

Other options for lower fares are the rideshare companies Uber and Lyft.

Photo: Taxi  
Address: 1251 South King Street - Honolulu, HI  
Phone: +1 808 531 1333  
Internet: [www.charleystaxi.com](http://www.charleystaxi.com)

## Pharmacy



Oahu offers a huge variety of pharmacies spread across the island, and a central one in Honolulu at Bishop Street. Mind their

differing opening hours.

CVS Pharmacy  
345 Hahani Street - Kailua  
+1 808 489 9320  
Opening hours: Mon - Fri 10h - 18h, Sat 10h - 17h

Walgreens Pharmacy  
94-223 Farrington Highway - Waipahu

+1 808 676 2230

Opening hours: Open daily from 8h - 21h

Photo: Gemma Garner  
Address: 1188 Bishop Street - Honolulu, HI  
Opening hours: Mon - Fri 8h30 - 17h  
Phone: +1 808 533 8887  
Internet: [www.thehonolulu-pharmacy.com](http://www.thehonolulu-pharmacy.com)

## Post Office



The United States Postal Service (USPS) mainly operates around Honolulu, and the main office is at Ala Moana Boulevard. However,

there are several more and you recognize them by their blue logo. Here, you can get any service from buying stamps to sending packages.

3600 Aolele Street - Honolulu  
+1 800 275 8777  
Opening hours: Mon - Fri 9h - 20h, Sat 9h - 16h

438 Hobron Lane - Honolulu  
+1 800 275 8777  
Mon - Fri 10h - 13h and 13h30 - 16h30, Sat 9h - 10h30

Photo: Andy Fuchs  
Address: 1450 Ala Moana Boulevard - Honolulu, HI  
Opening hours: Mon - Fri 9h - 17h, Sat 9h - 16h30  
Phone: +1 808 532 1987  
Internet: [www.usps.com](http://www.usps.com)

## Time Zone



Hawaii is in the Aleutian time zone, and all times are reflected in Aleutian time.



Photo: Marek Polakovic

## Telephone



Country code: +1 Area  
code: 808

Photo: Jardson Almeida

## Electricity



120 V, 60 Hz, A/B

Photo: Stirling Tschan

## Population

Oahu: 953,200

Honolulu: 387,170

## Currency

1 US Dollar = 100 Cents

## Opening hours

Most stores are open daily from 10h - 18h or even longer,  
while most of the bars and clubs close down at 2h.

## Newspapers

Honolulu Star Advertiser

East Oahu Sun

The Hawaii Independent (online)

## Emergency numbers

911

## Tourist information

Hawaii Visitors & Convention Bureau

2270 Kalakaua Avenue, Suite 801

Honolulu, HI 96815

+1 808 524 0722

[oahu@hvcb.org](mailto:oahu@hvcb.org)



# Mamala Bay

4

3

2

1

A

B

C

D

0 250 m

Kapiolani Regional Park

Aia Wai Golf Course

Mamala Bay

Sans Souci Beach Pk

Queen's Surf Beach

Waikiki Beach

Fort DeRussy Beach Pk

Kahanamoku Beach Pk

Lauiki St

Kamoku Street

Lau St

Date Street

Olokele Av

Lukepane Av

Ekela Av

Makaleka Av

Palani Av

Kapahulu Avenue

Palili Street

Winnam Av

William St

15 Melehu St

15 Hoolulu St

Olu Street

Mokihana Street

Herbert St

Castile St

Brokaw St

Kanaina Av

Leah Avenue

Park Avenue

Ohua Avenue

Liliuokalani Avenue

Cleghorn St

Turkiana St

Kaulani Av

Prince Edward St

Koa Avenue

Kaiulani Av

Walina St

Kanekapolei St

Nahua St

Nohonani St

Duke's Lane

Seaside Avenue

Royal Hawaiian Av

Lewers Street

Launui St

Kaula St

Ala Moana Blvd

Ala Wai Blvd

Kalahele Avenue

Keoniana St

Pau St

Niu St

Mc Cully St

Ena Road

Hobron Ln

Kaiao Dr

Hobron Lane

Ala Wai Boulevard

Ala Moana Boulevard

Rainbow Dr

Papa Pl

Kahele Road

Maluhia Road

Bishop Museum

Saratoga Road

Kalia Road

Beach Walk

Heiunua Rd

Don Ho Ln

Kalahele Avenue

Ala Wai Boulevard

Olohana Street

Kalahele Avenue

Launui St

Kaiolu St

Ala Wai Blvd

Ala Wai Blvd

Ala Wai Blvd

Ala Wai Blvd

Ala Wai Blvd

Ala Wai Blvd

Ala Wai Blvd

Ala Wai Blvd

Ala Wai Blvd

Ala Wai Blvd

Ala Wai Blvd

Ala Wai Blvd

Ala Wai Blvd

Ala Wai Blvd

Ala Wai Blvd

Ala Wai Blvd

Ala Wai Blvd

Ala Wai Blvd

Ala Wai Blvd

Ala Wai Blvd

Ala Wai Blvd

Ala Wai Blvd

Ala Wai Blvd

Ala Wai Blvd

Ala Wai Blvd

Ala Wai Blvd

Ala Wai Blvd

Ala Wai Blvd

Ala Wai Blvd

Ala Wai Blvd

Ala Wai Blvd

Ala Wai Blvd

Ala Wai Blvd

Ala Wai Blvd

Ala Wai Blvd

Ala Wai Blvd

Ala Wai Blvd

Ala Wai Blvd

Ala Wai Blvd

Ala Wai Blvd

Ala Wai Blvd

Ala Wai Blvd

Ala Wai Blvd

Ala Wai Blvd

Ala Wai Blvd

Ala Wai Blvd

Ala Wai Blvd

Ala Wai Blvd

Ala Wai Blvd

Ala Wai Blvd

Ala Wai Blvd

Ala Wai Blvd

Ala Wai Blvd

Ala Wai Blvd

Ala Wai Blvd

Ala Wai Blvd

Ala Wai Blvd

Ala Wai Blvd

Ala Wai Blvd

Ala Wai Blvd

Ala Wai Blvd

Ala Wai Blvd

Ala Wai Blvd

Ala Wai Blvd

Ala Wai Blvd

Ala Wai Blvd

Ala Wai Blvd

Ala Wai Blvd

Ala Wai Blvd

Ala Wai Blvd

Ala Wai Blvd

Ala Wai Blvd

Ala Wai Blvd

Ala Wai Blvd

Ala Wai Blvd

Ala Wai Blvd

Ala Wai Blvd

Ala Wai Blvd

Ala Wai Blvd

Ala Wai Blvd

Ala Wai Blvd

Ala Wai Blvd

Ala Wai Blvd

Ala Wai Blvd

Ala Wai Blvd

Ala Wai Blvd

Ala Wai Blvd

Ala Wai Blvd

Ala Wai Blvd

Ala Wai Blvd

Ala Wai Blvd

Ala Wai Blvd

Ala Wai Blvd

Ala Wai Blvd

Ala Wai Blvd

Ala Wai Blvd

Ala Wai Blvd

Ala Wai Blvd

Ala Wai Blvd

Ala Wai Blvd

Ala Wai Blvd

Ala Wai Blvd

Ala Wai Blvd

Ala Wai Blvd

Ala Wai Blvd

Ala Wai Blvd

Ala Wai Blvd

Ala Wai Blvd

Ala Wai Blvd

Ala Wai Blvd

Ala Wai Blvd

Ala Wai Blvd

Ala Wai Blvd

Ala Wai Blvd

Ala Wai Blvd

Ala Wai Blvd

Ala Wai Blvd

Ala Wai Blvd

Ala Wai Blvd

Ala Wai Blvd

Ala Wai Blvd

Ala Wai Blvd

Ala Wai Blvd

Ala Wai Blvd

Ala Wai Blvd

Ala Wai Blvd

Ala Wai Blvd

Ala Wai Blvd

Ala Wai Blvd

Ala Wai Blvd

Ala Wai Blvd

Ala Wai Blvd

Ala Wai Blvd

Ala Wai Blvd

Ala Wai Blvd

Ala Wai Blvd

Ala Wai Blvd

Ala Wai Blvd

Ala Wai Blvd

Ala Wai Blvd

Ala Wai Blvd

Ala Wai Blvd

Ala Wai Blvd

Ala Wai Blvd

Ala Wai Blvd

Ala Wai Blvd

Ala Wai Blvd

Ala Wai Blvd

Ala Wai Blvd

Ala Wai Blvd

Ala Wai Blvd

Ala Wai Blvd

Ala Wai Blvd

Ala Wai Blvd

Ala Wai Blvd

Ala Wai Blvd

Ala Wai Blvd

Ala Wai Blvd

Ala Wai Blvd

Ala Wai Blvd

Ala Wai Blvd

Ala Wai Blvd

Ala Wai Blvd

Ala Wai Blvd

Ala Wai Blvd

Ala Wai Blvd

Ala Wai Blvd

Ala Wai Blvd

Ala Wai Blvd

Ala Wai Blvd

Ala Wai Blvd

Ala Wai Blvd

Ala Wai Blvd

Ala Wai Blvd

Ala Wai Blvd

Ala Wai Blvd

Ala Wai Blvd

Ala Wai Blvd

Ala Wai Blvd

Ala Wai Blvd

Ala Wai Blvd

Ala Wai Blvd

Ala Wai Blvd

Ala Wai Blvd

Ala Wai Blvd

Ala Wai Blvd

Ala Wai Blvd

Ala Wai Blvd

Ala Wai Blvd

Ala Wai Blvd

Ala Wai Blvd

Ala Wai Blvd

Ala Wai Blvd

Ala Wai Blvd

Ala Wai Blvd

Ala Wai Blvd

Ala Wai Blvd

Ala Wai Blvd

Ala Wai Blvd

Ala Wai Blvd

Ala Wai Blvd

Ala Wai Blvd

Ala Wai Blvd

Ala Wai Blvd

Ala Wai Blvd

Ala Wai Blvd

Ala Wai Blvd

Ala Wai Blvd

Ala Wai Blvd

Ala Wai Blvd

Ala Wai Blvd

Ala Wai Blvd

Ala Wai Blvd

Ala Wai Blvd

Ala Wai Blvd

Ala Wai Blvd

Ala Wai Blvd

Ala Wai Blvd

Ala Wai Blvd

Ala Wai Blvd

Ala Wai Blvd

Ala Wai Blvd

