



Irvine, California

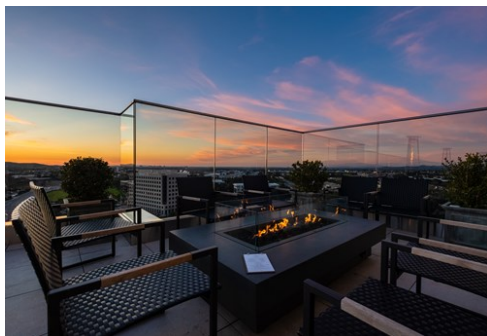
in collaboration with Destination Irvine

Photo: Destination Irvine



Destination Irvine

As if the honor of being deemed "America's Safest Big City"* since 2005 isn't enough, Irvine – the center of Orange County, California – offers visitors shopping, diverse dining, outdoor recreation and family-friendly activities. Just minutes from the area's popular beaches and world-famous attractions – Irvine is the ideal location for a true Southern California experience!



Destination Irvine



Destination Irvine

QUIZ

*What Type of Traveller
Are You Based on
Your Travel IQ?*

TAKE THE QUIZ

Top 5



Orange County Soccer Club
Orange County Soccer Club is Orange County's only professional soccer team a...



San Joaquin Marsh and Wild...
San Joaquin Marsh and Wildlife Sanctuary are comprised of more than 300 acre...



Irvine Spectrum Center
The Spectrum Center offers more than 120 nationally recognized retailers, in...



Orange County Great Park B...
The Great Park Balloon has become an Orange County icon. The 118-foot orange...



Diamond Jamboree
A vibrant, bustling retail center featuring a range of services and dining t...



THE CITY



Destination Irvine

Irvine is a city like no other: a master-planned balance of urban living and preserved natural space at the center of Orange County in coastal Southern California.

Reflecting the visionary spirit of its University of California campus, Irvine is not only a great place to vacation, it's an exceptional destination for meetings and events, a multicultural home to over 100 company headquarters.

At the same time, Irvine is one of the most family-friendly destinations in the country, ranked "America's Safest Big City" by the FBI since 2005 and less than half an hour from some of California's best-loved attractions, including Laguna Beach, Newport Beach, Disneyland Park® and Knott's Berry Farm.

If you love sunny days and mild nights, world-class shopping, hiking and biking, and diverse dining, find it all at the center of Orange County: Irvine, California.

Irvine boasts the most open space in all of Orange County with 16,000 acres offering 54 miles of off-street bikeways, along with hiking and horseback riding trails.

Much of Irvine's open space is part of the Irvine

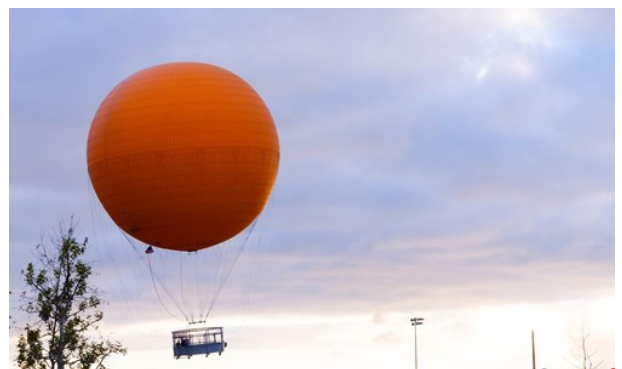
Ranch which encompasses 50,000 acres and has been named a Natural Landmark by both the U.S. Department of the Interior and State of California. The area, deemed by scientists as one of the world's biodiversity "hot spots," features hundreds of different species of plants and animals, including eagles, badgers, mountain lions, Tecate cypress trees, and many rare species of birds, reptiles and amphibians.

Bommer and Shady Canyons beckon walkers and hikers to stroll past ancient oak and sycamore groves and rough rock outcrops.

The 2.8-acre Quail Hill Trailhead is an easy two-mile natural surface trail and is the only wilderness trail part of the Natural Landmarks that allows dogs.

San Joaquin Marsh and Wildlife Sanctuary are comprised of more than 300 acres of restored coastal freshwater wetlands. Twelve miles of trails serve as an oasis for walkers, joggers, and birdwatchers as well as a living laboratory for students, teachers and the public.

25 THINGS TO DO IN IRVINE



Destination Irvine

From the Great Balloon and the Giant Wheel to Diamond Jamboree and the Irvine Global Village Festival, experience a plethora of outdoor recreation, family-friendly attractions and events

along with globally diverse cuisine in Irvine.

1.
Get a bird's-eye view of the area 400 feet above ground aboard the Great Park Balloon, at the Orange County Great Park. The Great Park Balloon is one of the largest tethered helium (not hot air) balloons and the first of its kind in the United States. It is environmentally safe, non-polluting, and virtually silent.
2.
Take a spin on the Irvine Spectrum Center's iconic 108-foot tall Giant Wheel, custom-designed and handcrafted in Italy. Featuring over 52,000 energy-efficient LED lights, the Giant Wheel is capable of projecting a dazzling 16 million color schemes. Whether you're at the top looking out over Orange County, or in the courtyard below mesmerized by the lights, the view is spectacular.
3.
Please your palate with a variety of international flavors at Diamond Jamboree. With over twenty-one restaurants it is a must see for all who like to explore the cuisines and cultures of the Pacific Rim.
4.
Sip afternoon tea or a signature cocktail in the Bow Room of the Hello Kitty Grand Café. Hello Kitty Grand Cafe inside the Irvine Spectrum Center is not your average cafe. Underneath the neon Bow Room sign and behind the white door marked with a simple gold bow is an area found only in Irvine, California. The Irvine Bow Room is the Hello Kitty themed oasis, providing traditional Afternoon Tea by day and signature drinks at night.

5.
Catch a professional soccer game as the Orange County Soccer Club takes on opponents. It's the only professional soccer team in the OC and is the official affiliate partner of the Los Angeles Football Club (LAFC) of Major League Soccer (MLS).
6.
Visit the Irvine Museum, the only museum in the state dedicated to the preservation and display of California Impressionism. California has long been a golden land with beautiful weather and an environment that is perfect for growing the most succulent of fruits. Over 100 years ago impressionist artists would come from miles around to paint the beautiful landscapes of the day. The Irvine Museum is home to many such paintings and is keen to keep today's generation painting the glorious surroundings that they live in. There are many fixed exhibitions as well as traveling ones meaning there is always something new to see.
7.
Let the kids play grown-up at Pretend City Children's Museum. This hands-on Exploratorium is a magical, interconnected "city" designed to "build better brains". Kids can pretend they are grown-ups through 17 interactive exhibits, purposeful play, role playing, educational programming and hands-on learning experiences.
8.
Celebrate 50 different cultures at the Irvine Global Village Festival, Orange County's largest multicultural festival. The festival incorporates the best of Irvine's historic fall festival to offer more food, art, and music. Families delight in Kids Village with crafts, interactive activities,

seek-a-treat, and a petting zoo. Attendees of all ages enjoy local and global cuisine, an artisan's marketplace, music, art, and exhibits.

9.

Pay your respect at the Northwood Gratitude and Honor Memorial, the nation's only memorial dedicated to honoring all of the fallen American service members in the wars of Afghanistan and Iraq.

10.

Get an introduction to the large botanical garden that contains over 11,000 trees and shrubs, including 33 species of eucalyptus at Aldrich Park. Aldrich Park is the natural centerpiece of the University of California, Irvine. The numerous trees on campus make UCI one out of 74 campuses nationwide to win the Tree Campus USA designation.

11.

Pick melons, strawberries, and pumpkins at Tanaka Farms. Tanaka Farm is a 30-acre family-run farm in the heart of Irvine where they grow over 60 different organic fruits and vegetables throughout the year.

12.

Attempt a triple Salchow on the Irvine Spectrum Center's ice skating rink, OC Chill. Irvine Spectrum Center is transformed into a winter wonderland when the festive outdoor Holiday Ice Rink returns to Giant Wheel Court during the holiday season. The outdoor Ice Rink offers fun for the whole family.

13.

Experience a sensory overload at one of Irvine's farmers market, featuring fresh fruits and vegetables from local farmers, as well as arts

and crafts fair. Take home fresh produce grown on the Great Park Farm and other local farms. Explore the Farm + Food Lab and get home gardening tips from master gardeners from the University of California, Division of Agriculture and Natural Resources.strawberries

14.

Enjoy contemporary dance, world music, theater, chamber music and family events at the Irvine Barclay Theatre. "... consistently presents one of the country's most impressive rosters of music, dance and dramatic events... and there's no bad seat in the house" - Where MagazineBarclay Theatre

15.

Explore the area's history and learn how the city began with a visit to the Irvine Historical Museum and the Irvine Ranch Historic Park. Irvine Historical Museum is located in the San Joaquin Ranch House, it was commissioned by James Irvine in 1868 and considered the oldest standing structure within the original boundaries of Irvine Ranch. Built for \$1,300, the home was the first wooden house to be erected between Anaheim and San Diego. A research library and extensive photo collection of local historic information are available.

16.

Hike the distinctive Quail Hill preserve with your furry, four-legged friend. The 2.8-acre Trailhead, an easy two-mile natural surface trail, provides a great location to connect to southern Irvine's extensive trail network. You can also experience Irvine's self-guided audio tour on your phone.Quail Hill Hikers

17.

Trek the outstanding trails of Bommer Canyon

past ancient oak and sycamore groves and rough rock outcrops. Being more than 180 years old, Bommer Canyon beckons hikers, mountain bikers and all outdoor enthusiasts. There are free programs such as yoga, full moon hike and rugged mountain bike rides.

18.
Discover hundreds of species of plants and animals at the San Joaquin Marsh and Wildlife Sanctuary. Learn about the Marsh, water conservation and environmental protection at the interpretive center. The 12-mile trail is an oasis for walkers, runners and birdwatchers. Over 100 different species of birds call this place home including blue herons, snowy egrets, brown pelicans and many other feathered friends.

19.
Bike Irvine - 60 miles+ of off-road bicycle trails and 300+ miles of on-road bicycle lanes. One-third of Irvine is preserved for outdoor recreation, making it one of the greenest cities in America!

20.
Shop at one of Irvine's retail and lifestyle centers. Irvine and the surrounding area offer fashionistas, casual shoppers and people-watchers several retail and lifestyle centers such as Irvine Spectrum Center, Fashion Island, South Coast Plaza, The District and The Market Place.

21.
View artwork and meet artists at the Irvine Fine Arts Center. The Irvine Fine Arts Center provides art classes, open studio programs, events, and exhibitions for all ages in fully-equipped art studios.

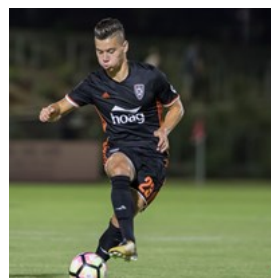
22.
Golf at one of Irvine's picturesque courses. Irvine has many fantastic options for the avid golfer, including a variety of courses and plenty of tee times to fit your schedule.

23.
Hear Grammy award-winning artists at FivePoint Amphitheatre, adjacent to the OC Great Park, the 12,000-capacity venue is the first one to be built in Orange County since 1983.

24.
Go around and around on Irvine's two carousels - Orange County Great Park, featuring hand-painted artwork inspired by vintage orange crate labels and Orange County scenes and Irvine Spectrum Center.

25.
Cheer on the University of California, Irvine athletes as the Anteaters compete in 18 different Division I intercollegiate sports.

Orange County Soccer Club



Orange County Soccer Club is Orange County's only professional soccer team and official affiliate partner of the Los Angeles Football Club of Major League Soccer. Orange County SC is a part of the United Soccer League, the fastest growing Division II professional soccer league in the world comprised of 34+ teams across the United States.

The team plays their home games at the Orange County Great Park's Championship Soccer Stadium. Nestled right in the heart of the Great Park, the Championship Soccer Stadium has a

capacity of over 5,000 for Orange County SC matches.

Photo: Destination Irvine

Address: 8272 Great Park Blvd., Irvine, CA 92618

Phone: 1+949-647-4625

Internet: <https://www.orangecountysoccer.com>

San Joaquin Marsh and Wildlife Sanctuary



San Joaquin Marsh and Wildlife Sanctuary are comprised of more than 300 acres of restored coastal freshwater wetlands. Twelve miles of trails serve as an oasis for walkers, joggers, and birdwatchers as well as a living laboratory for students, teachers, and the public. The sanctuary is home to 100 different species of birds.

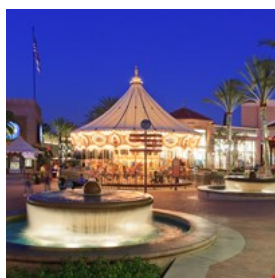
Photo: Destination Irvine

Address: 5 Riparian View, Irvine, CA 92612

Phone: 1+949-453-5300

Internet: <https://www.irwd.com/san-joaquin-marsh>

Irvine Spectrum Center



The Spectrum Center offers more than 120 nationally recognized retailers, including unique stores. One of Southern California's most popular shopping, entertainment, and dining destinations offers these larger-than-life examples of what entertainment is all about:

The Giant Wheel was handcrafted in Italy, is 108-feet tall, and features over 52,000 LED lights projecting a dazzling 16 million color schemes. The view from its top makes Instagram users jealous.

The Carousel is popular for a spin or two with

kids of all ages. You'll love the antique-designed horses and menagerie of other animals.

The Spectrum 21 IMAX & RPX Complex offers your family 21 theatre screens and 6,400 seats, with luxurious plush recliners, an enhanced menu, and a lounge.

And more including: Dave & Buster's, Splash Pad Fountain, Luckey Climber, Improv Comedy Club and weekend entertainment.

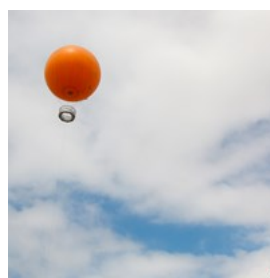
Photo: Destination Irvine

Address: 71 Fortune Drive

Phone: +1 949 753 5180

Internet: www.shopirvinespectrumcenter.com

Orange County Great Park Balloon



The Great Park Balloon has become an Orange County icon. The 118-foot orange, helium balloon soars into the sky to height of 400 feet and offers an unmatched 360 degree view that spans 40 miles on a clear day.

Photo: Destination Irvine

Phone: +1 866 829 3829

Internet: www.ocgp.org/visit/balloon

Diamond Jamboree



A vibrant, bustling retail center featuring a range of services and dining to please every palate. A unique Southern California destination that brings together a variety of cuisines and international flavors.

Photo: Destination Irvine

Address: 2700-2750 Alton Parkway, Irvine

Phone: +1 626 285 5550

Internet: www.diamond-jamboree.com

Pretend City Children's Museum



collecting their pay from an ATM.

A magical interactive "city" where children have an opportunity to play grown-up by going to work, buying groceries, visiting the doctor and

Photo: Destination Irvine

Address: 29 Hubble, Irvine

Phone: +1 949 428 3900

Internet: www.pretendcity.org

Irvine Museum



The only museum in California dedicated to the preservation and display of Californian Impressionism.

Photo: Destination Irvine

Address: 18881 Von Karman Avenue, Irvine

Opening hours: Tuesday through Saturday, 11 a.m. to 5 p.m.

Phone: +1 949 476 0294

Tickets: Admission is complimentary for all visitors.

Donations are gratefully accepted.

Internet: www.irvinemuseum.org

Historic Irvine



region has a long and rich history, dating back to 1878 when James Irvine acquired his business partners' interests in 168 square miles of future

The history of Irvine is not a long one -- in fact, today's growing city celebrated its 40th anniversary in December 2011. But the Irvine

Orange County land for \$150,000; today, that amount would equate to \$3.56 million. The acquisition created the great Irvine Ranch consisting of 110,000 acres stretching 23 miles from the Santa Ana River to the Pacific Ocean.

Visitors can explore the oldest standing structure within the original boundaries of Irvine Ranch, and the first wooden house erected between Anaheim and San Diego at the Irvine Historical Museum. In addition, the Irvine Ranch Historic Park, site of the original Irvine Ranch headquarters, features several of the original structures, including the home of James Irvine II, numerous barns and residential buildings.

Step back in time at the La Quinta Inn in Old Town Irvine where 101 rooms of the hotel once served as the silos of a former lima bean and grain warehouse. In 1986, the silos were converted to the hotel. The center hexagonal concrete silos are now the interior corridors serving the rooms located in the exterior facing silos and the tin shed, kept mostly intact including the original main lift, is utilized as the area where the hotel serves breakfast. The hotel has a picture display including a brief history and description of "Historic Old Town Irvine."

Photo: Destination Irvine

Internet: www.irvineranchhistory.com

Irvine Global Village Festival



five stages. Cultural and religious displays,

Orange County's largest multicultural festival celebrates Irvine's diversity. More than 50 cultures are represented, with music and dance on

international cuisine, a world marketplace and a giant interactive Kids Village. Held in either September.

Photo: Destination Irvine

Address: 6950 Marine Way, Irvine, CA 92618

Opening hours: 10 a.m. to 6 p.m.

Phone: +1 949 724 6606

Tickets: Admission is free

Internet: www.irvinefestival.org

Email: festival@cityofirvine.org

Irvine Spectrum Center Giant Wheel



The Giant Wheel was handcrafted in Italy, is 108-feet tall, and features over 52,000 LED lights projecting a dazzling 16 million color schemes.

The view from its top makes Instagram users jealous.

Photo: Destination Irvine

Address: 71 Fortune Drive, Irvine

Phone: +1 949 753 5180

Internet: www.shopirvinespectrumcenter.com

EVENTS



Destination Irvine

Irvine is home to annual and seasonal events.

Orange County Soccer Club



Orange County Soccer Club is Orange County's only professional soccer team and official affiliate partner of the Los Angeles Football Club of Major League Soccer. Orange County SC is a part of the United Soccer League, the fastest growing Division II professional soccer league in the world comprised of 34+ teams across the United States.

The team plays their home games at the Orange County Great Park's Championship Soccer Stadium. Nestled right in the heart of the Great Park, the Championship Soccer Stadium has a capacity of over 5,000 for Orange County SC matches.

Photo: Destination Irvine

Address: 8272 Great Park Blvd., Irvine, CA 92618

Phone: 1+949-647-4625

Internet: <https://www.orangecountysoccer.com>

Irvine Regional Park's Easter Eggstravaganza



Pictures with the Easter Bunny, Easter egg hunts, train rides, carnival games, bunny bounce house, picture stands, OC Zoo, cookie decorating, face painting, hay rides, great food, pony rides, bike and paddle boat rentals and much more! Held in March or April pending dates of Easter.

Photo: Destination Irvine

Phone: +1 714 973 6835

Internet: www.irvineparkrailroad.com

Tanaka Farms Strawberry Tours



your own. March through June.

Take a wagon ride tour of the 30-acre working farm. See how fruits and vegetables grow, get a taste of fresh strawberries and pick

Photo: Destination Irvine
Address: 5380 University Dr, Irvine
Phone: +1 949 653 2100
Internet: www.tanakafarms.com

Studio Arts Festival



live demonstrations and musical performances. Held in June.

More than 100 artisans' works on display, including paintings, ceramics, sculpture, jewelry, photography, textiles and glass. Enjoy

Photo: Destination Irvine
Phone: +1 949 724 6880
Internet: www.cityofirvine.org/cityhall/cs/finearts/special-events/studio_arts_festival.asp

Tanaka Farms Watermelon Tours



through August.

Take a wagon tour of the 30-acre working farm. See how produce grows, taste fresh watermelon and pick your own organic melon. July

Photo: Destination Irvine
Address: 5380 University Dr, Irvine
Phone: +1 949 653 2100
Internet: www.tanakafarms.com

Irvine Global Village Festival



five stages. Cultural and religious displays, international cuisine, a world marketplace and a giant interactive Kids Village. Held in either September or October.

Orange County's largest multicultural festival celebrates Irvine's diversity. More than 50 cultures are represented, with music and dance on

Photo: Destination Irvine
Address: 4 Civic Center Plaza, Irvine
Opening hours: 10 a.m. to 6 p.m.
Phone: +1 949 724 6606
Tickets: Admission is free
Internet: www.irvinefestival.org
Email: festival@cityofirvine.org

Irvine Park Railroad Pumpkin Patch



Photo: Destination Irvine
Address: 1 Irvine Park Road, Orange
Phone: +1 714 997 3968
Internet: www.irvineparkrailroad.com

Activities for kids of all ages - hay rides, Halloween bounce house, face painting, and more. Held in October.

Tanaka Farms U-Pick Pumpkin Patch



Photo: Destination Irvine
Address: 5380 University Dr, Irvine
Phone: +1 949 653 2100

Wagon rides, petting zoo, corn maze, games, arts and crafts and food. September through October.

Internet: www.tanakafarms.com

Holiday Faire

More than 150 vendors displaying arts and crafts, hand-blown glass, ceramics, jewelry, folk crafts, porcelain dolls, clothing, holiday decorations and more. Typically held in November.

Address: 14321 Yale Avenue, Irvine

Phone: +1 949 724 6880

Internet: www.cityofirvine.org/cityhall/cs/finearts/specialevents/holiday_faure.asp

OC Chill Rink



Irvine Spectrum Center is transformed into a winter wonderland when the festive outdoor Holiday Ice Rink returns to Giant Wheel Court. November through January.

Photo: Destination Irvine

Address: 71 Fortune Drive, Irvine

Internet: www.skatespectrum.com

Irvine Park Railroad's Annual Christmas Train



Activities for kids of all ages - pictures with Santa Claus, story time with Mrs. Claus, carnival games, Christmas cookie decorating, a coloring corner and more. Held in December.

Photo: Destination Irvine

Address: 1 Irvine Park Rd, Orange

Phone: +1 714 997 3968

Internet: www.irvineparkrailroad.com

Certified Farmers Market



Features fresh, locally grown fruits and vegetables, handcrafted artisan products, live music and entertainment, and a selection of gourmet food trucks. Year round, every Sunday at the Orange County Great Park.

Photo: Destination Irvine

Internet: www.ocgp.org

DO & SEE



Destination Irvine

Irvine offers visitors outdoor recreation with miles of hiking and biking trails, family-friendly activities, diverse dining, golf and shopping.

Orange County Great Park



Orange County Great Park is the incredible reincarnation of what was once the Marine Corps Air Station El Toro.

Encompassing a total of 1,300 acres, more than 200 are currently developed and 688 acres are in planning and design.

Already setting new standards as one of the most modern metropolitan parks in the world, the

carefully designed Orange County Great Park at once pays homage to the military history of this legendary air base while creating exceptional experiences for a new generation.

These are just some of the activities and attractions available at Orange County Great Park. The Visitor Center has details and can provide directions on these and additional happenings and amenities:

Great Park Balloon - Enjoy a bird's-eye view — spanning 40 miles on a clear day — as you soar 400 feet above the surrounding landscape on this tethered balloon ride.

Great Park Farmer's Market - An incredible Sunday experience where you can find locally grown fruits and vegetables, handcrafted artisan products, live music and entertainment, plus gourmet food trucks.

Sports Complex - A 194-acre venue which is now home to a championship soccer stadium, home of Orange County's only professional soccer team, OC Soccer Club, 12 baseball and softball fields, 13 soccer fields, 5 sand volleyball courts, 25 tennis courts, 8 basketball courts, flexible field space, and a children's play area.

Ice Facility - 280,000 square-foot facility features three NHL sized rinks and an Olympic sized rink including a 2,500 seat arena.

Great Park Carousel - The majestic Fashion Island carousel now resides in Orange County Great Park for kids of all ages.

Kids Rock Playground - Playground for toddlers just outside the Visitor Center with a nature theme and cloud-like misters for warmer days.

Walkable Historical Timeline - A concrete taxiway that was part of the original El Toro Marine Corps Air Station which provides an opportunity to encounter some of the major defining events and people in history.

Hangar 224 - A historic World War II hangar, which has been renovated and is now an event venue.

Palm Court Arts Complex - Featuring a shaded outdoor performance plaza enhanced by 54 Canary Islands date palms, a permanent public art installation, and an artist-in-residence program.

Farm + Food Lab - A hands-on gardening experience with themed planters featuring fruits, flowers, vegetables, and herbs.

FivePoint Amphitheater - 12,000 seat venue hosting a wide variety of events & musical programming by Live Nation.

Orange County Great Park also offers many classes, programs, and seasonal activities for all ages.

Photo: Destination Irvine

Address: 8000 Great Park Blvd, Irvine, CA 92618

Opening hours: 10 AM - 10 PM

Phone: (949) 724-6247

Internet: www.ocgp.org

Irvine Regional Park



This huge park encompasses a variety of different activities, from bike, horse and paddleboat rentals, pony rides for kids, a nature

center, playgrounds and snack bars.

Photo: Destination Irvine

Address: 1 Irvine Park Road, Orange

Internet: www.ocparks.com

Orange County Zoo



Located inside the beautiful Irvine Regional Park, the zoo is home to animals and plants native to the Southwestern United States. It also

features a barnyard with domestic goats, sheep, pot-bellied pigs and more.

Photo: Destination Irvine

Address: 1 Irvine Park Road, Orange

Internet: www.ocparks.com/zoo

Irvine Barclay Theatre



Music and dance aficionados will want to take advantage of performances. The 756-seat hall is renowned for its intimate

atmosphere and superb acoustics.

Photo: Destination Irvine

Address: 4242 Campus Drive, Irvine

Phone: +1 949 854 4607

Internet: www.thebarclay.org

UCI Arboretum



Offers an exciting introduction to the unique flora of coastal California, from Irvine south into Mexico, as well as other habitats.

Photo: Destination Irvine

Address: Campus Drive, Irvine

Internet: arboretum.bio.uci.edu

Beall Center for Art + Technology



High-tech art center and gallery focuses on experimental and media arts.

Photo: Destination Irvine

Address: 712 Arts Plaza University of California, Irvine

Internet: www.beallcenter.uci.edu

San Joaquin Marsh and Wildlife Sanctuary



San Joaquin Marsh and Wildlife Sanctuary are comprised of more than 300 acres of restored coastal freshwater wetlands. Twelve miles of trails serve as an oasis for walkers, joggers, and birdwatchers as well as a living laboratory for students, teachers, and the public. The sanctuary is home to 100 different species of birds.

Photo: Destination Irvine

Address: 5 Riparian View, Irvine, CA 92612

Phone: 1+949-453-5300

Internet: <https://www.irwd.com/san-joaquin-marsh>

Oak Creek Golf Club



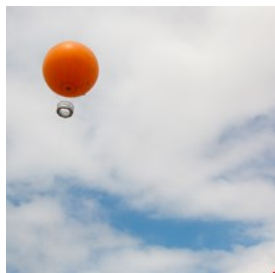
As part of the Audubon Cooperative Sanctuary Program, this course features a tranquil creek running through tapered fairways, plus gorgeous greens, beautiful lakes, and bull-nosed carved bunkers. Great for golfers at all levels.

Photo: Destination Irvine

Address: Oak Creek Club Drive, Irvine

Internet: www.oakcreekgolfclub.com

Orange County Great Park Balloon



The Great Park Balloon has become an Orange County icon. The 118-foot orange, helium balloon soars into the sky to height of 400 feet and

offers an unmatched 360 degree view that spans 40 miles on a clear day.

Photo: Destination Irvine

Phone: + 1 866 829 3829

Internet: www.ocgp.org

Strawberry Farms Golf Club



Set around canyons and wetlands, this 18-hole, par 71 course offers picturesque vistas, large rolling greens, and scenic hills. It's also home to the

only David Leadbetter Golf Academy in California.

Photo: Destination Irvine

Address: 11 Strawberry Farms Road, Irvine

Internet: www.sf-golf.com

Pretend City Children's Museum



A magical interactive "city" where children have an opportunity to play grown-up by going to work, buying groceries, visiting the doctor and

collecting their pay from an ATM.

Photo: Destination Irvine

Address: 29 Hubble, Irvine

Phone: +1 949 428 3900

Internet: www.pretendcity.org

Irvine Museum



The only museum in California dedicated to the preservation and display of Californian Impressionism.

Photo: Destination Irvine

Address: 18881 Von Karman Avenue, Irvine

Opening hours: Tuesday through Saturday, 11 a.m. to 5 p.m.

Phone: +1 949 476 0294

Tickets: Admission is complimentary for all visitors.

Donations are gratefully accepted.

Internet: www.irvinemuseum.org

Historic Irvine



The history of Irvine is not a long one -- in fact, today's growing city celebrated its 40th anniversary in December 2011. But the Irvine

region has a long and rich history, dating back to 1878 when James Irvine acquired his business partners' interests in 168 square miles of future Orange County land for \$150,000; today, that amount would equate to \$3.56 million. The acquisition created the great Irvine Ranch consisting of 110,000 acres stretching 23 miles from the Santa Ana River to the Pacific Ocean.

Visitors can explore the oldest standing structure within the original boundaries of Irvine Ranch, and the first wooden house erected between Anaheim and San Diego at the Irvine Historical Museum. In addition, the Irvine Ranch Historic Park, site of the original Irvine Ranch headquarters, features several of the original structures, including the home of James Irvine II, numerous barns and residential buildings.

Step back in time at the La Quinta Inn in Old Town Irvine where 101 rooms of the hotel once served as the silos of a former lima bean and grain warehouse. In 1986, the silos were converted to the hotel. The center hexagonal concrete silos are now the interior corridors serving the rooms located in the exterior facing silos and the tin shed, kept mostly intact including the original main lift, is utilized as the area where the hotel serves breakfast. The hotel has a picture display including a brief history and description of "Historic Old Town Irvine."

Photo: Destination Irvine

Internet: www.irvineranchhistory.com

Irvine Spectrum Center Giant Wheel



antique-themed carousel.

The 108-foot-tall Giant Wheel was handcrafted in Italy and glows with 1,400 lights. The shopping center also features an

Photo: Destination Irvine

Address: 71 Fortune Drive, Irvine

Internet: www.shopirvinespectrumcenter.com

DINING



Destination Irvine

For the urban foodie with a palate that craves global cuisine, Irvine dining is varied and exciting. With nearly 40% of the city's population of Asian descent, the representation of international cuisine — including China, Taiwan, Japan, Vietnam, and other distant cultures — is truly astounding.

Andrei's Conscious Cuisine & Cocktails



Andrei's showcases the freshest local and organically grown produce, as well as naturally raised meats and sustainable seafood.

The culinary style incorporates the cultural diversity of California cuisine, focusing on the flavors and freshness of the Mediterranean. Visitors can give back by dining at Andrei's Conscious Cuisine & Cocktails where 100% of the restaurant's profits benefit the Andrei Foundation, a foundation established in honor of the owner's brother/son who was afflicted with an eye disease called Retinitis Pigmentosa. The primary focus of the foundation is to support eye research and provide support to those with visual impairment. The non-profit organization also focuses on a number of community and global support causes including; a local guide dog team, Makapo Aquatics, a blind paddling

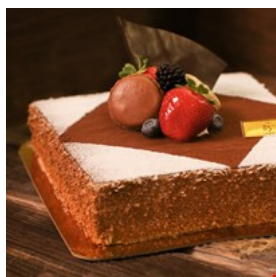
team, surf lessons and an Ocean Institute “ocean adventure” for visually impaired children, building a school library in rural Sri Lanka, funding and building a rain-collection clean water system in Nicaragua and providing life-changing surgeries for over 20 Russian orphans.

Photo: Destination Irvine

Address: 2607 Main Street, Irvine

Internet: www.andreisrestaurant.com

85°C Bakery



Specializing in coffee, cakes, and breads, 85°C Bakery opened in Irvine in 2009 as the first U.S. store. Why 85°C? It is the ideal temperature to

drink coffee. Their most popular beverage is the Sea Salt Coffee - slightly sweetened iced coffee topped with creamy foam whipped with sea salt, with semi-sweet chocolate powder sprinkled over the top of foam.

Photo: Destination Irvine

Address: 2700 Alton Parkway, Irvine

Internet: www.85cafe.us

Bistango



Artful New American cuisine with a Wine Spectator award-winning wine list of over 400 varietals. The ambiance is further enriched each

season by revolving modern art exhibits, plus live jazz and blues music.

Photo: Destination Irvine

Address: 19100 Von Karman Avenue, Irvine

Internet: www.bistango.com

Diamond Jamboree



Diamond Jamboree is a vibrant, bustling retail center featuring a range of services and dining destinations to please every palate, the center is

representative of its community. “Foodies, gourmets and adventurous eaters from around the world owe it to themselves to pay a visit to Irvine’s multicultural dining destination.”

Photo: Destination Irvine

Address: 2700-2750 Alton Parkway, Irvine

Phone: +1 626 285 5550

Internet: www.diamond-jamboree.com

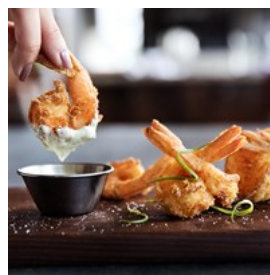
Il Fornaio

An authentic Italian restaurant featuring a monthly regional menu.

Address: 18051 Von Karman Avenue, Irvine

Internet: www.ilfornaio.com

Paul Martin's American Grill



Epitome of a farm-to-table venue with local, seasonal and delicious cuisine.

Photo: Destination Irvine

Address: 31 Fortune Drive, #302, Irvine

Internet: www.paulmartinsamericangrill.com

Agora Churrascaria



A Brazilian steakhouse serving up to 16 cuts of grilled meats by gaucho-clad waiters.

Photo: Destination Irvine
Address: 1830 Main Street, Irvine
Internet: www.agorachurrascaria.com

Ruth's Chris



The penultimate restaurant for USDA prime steaks and fresh seafood.

Photo: Destination Irvine
Address: 2961-A Michaelson Drive, Irvine
Internet: www.ruthschris.com

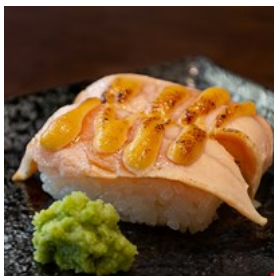
Ajisen Ramen



Noodle dishes, curries, tonkatsu and other tasty dishes.

Photo: Destination Irvine
Address: 2700 Alton Pkwy, Irvine
Internet: www.ajisen.ca

Kura Revolving Sushi Bar



Fresh fish and Japanese food daily.

Photo: Destination Irvine
Address: 2700 Alton Pkwy #133, Irvine
Internet: www.kulausa.com

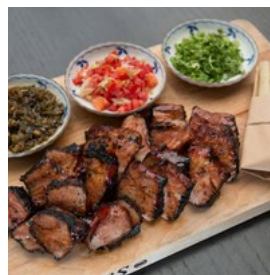
BCD Tofu House



Famous for bowls of sizzling hot Korean soup.

Photo: Destination Irvine
Address: 2700 Alton Pkwy #135, Irvine

Twenty Eight Restaurant & Lounge



Enjoy Top Chef finalist, Shirley Chung's play with California flavors and cuisines from all over the world.

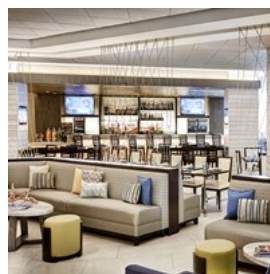
Photo: Destination Irvine
Address: 19530 Jamboree Road, Irvine
Internet: www.twentyeightoc.com

90 Pacifica

America bistro-style cuisine in a comfortable atmosphere.

Address: 90 Pacifica, Irvine
Internet: <http://doubletree3.hilton.com/en/hotels/california/doubletree-by-hilton-hotel-irvine-spectrum-ONASDT/dining/index.html>

FLOE Lounge



Relax and enjoy a specialty cocktail or glass of wine. Live music and drink specials weekly.

Photo: Destination Irvine
Address: 18000 Von Karman Avenue, Irvine
Internet: www.marriott.com/hotels/hotel-information/restaurant/laxir-irvine-marriott/

Water Falls Restaurant

Traditional and Mediterranean influences, sophisticated European presentation and infusions.

Address: 18700 MacArthur Boulevard, Irvine
Internet: www.atriumhotel.com/dining/

SHOPPING



Destination Irvine

Irvine and Orange County offer world-class shopping and entertainment with a eclectic mix of retail centers, upscale boutiques, fashion, food and IMAX movies.

Irvine Spectrum Center



One of Southern California's most popular shopping and dining destinations. Over 130 retailers from Nordstrom to H&M, and a diverse collection of specialty stores. Center features an IMAX theater, an antique-themed carousel and an 108-foot Giant Wheel hand-crafted in Italy with 1,400 glowing lights.

Photo: Destination Irvine
Address: 71 Fortune Drive
Phone: +1 949 753 5180
Internet: www.shopirvinespectrumcenter.com

The District at Tustin Legacy



The District at Tustin Legacy represents a one million square-foot lifestyle center boasting your favorite retailers such as: Whole Foods Market, Costco, Target, Lowe's and TJ Maxx/Home Goods. It also features the pet-friendly District Promenade, plus many specialty retail shops.

Photo: Destination Irvine
Address: 2437 Park Avenue, Tustin
Internet: www.thedistricttl.com

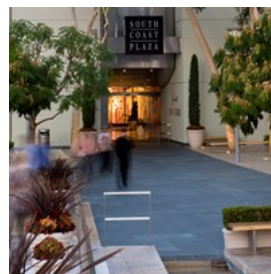
Diamond Jamboree



A vibrant, bustling retail center featuring a range of services and dining to please every palate, A unique Southern California destination that brings together a variety of cuisines and international flavors.

Photo: Destination Irvine
Address: 2700-2750 Alton Parkway, Irvine
Phone: + 1 626 285 5550
Internet: www.diamond-jamboree.com

South Coast Plaza



South Coast Plaza is recognized internationally for its unparalleled retail collection and award-winning restaurants, from A to Z. Shop at Armani, Bvlgari, Chanel, Chloe, Dior, Hermes, Jimmy Choo, Mikimoto, Roberto Cavalli, Zara and more.

Photo: Destination Irvine

Address: 3333 Bristol Street, Costa Mesa
Internet: www.southcoastplaza.com

Fashion Island



Better known as Orange County's premier coastal shopping and dining experience, Fashion Island is a upscale as it gets. It offers a

sophisticated, yet relaxed atmosphere featuring ocean views, specialty boutiques, world-class department stores and a wide variety of restaurants and cafes.

Photo: Destination Irvine

Address: 401 Newport Center Drive, Newport Beach
Internet: www.shopfashionisland.com

ACCOMMODATIONS



Destination Irvine

Irvine offers a variety of accommodations from full-service and boutique to extended stay and all suite properties. Irvine has the lowest hotel tax in Orange County at 10% versus up to 17% elsewhere.

AC Hotel Irvine



Elevate your stay in California at AC Hotel Irvine. Our contemporary hotel is conveniently located just 1.7 miles away from the John

Wayne Airport-Orange County and offers easy access to several popular area attractions, such as Disneyland® Resort, Irvine Spectrum Center and South Coast Plaza. As soon as you enter our hotel lobby, you'll be intrigued by our sleek European design and will enjoy a stylish stay from start to finish. Unwind at the end of the day in our trendy AC Lounge serving tapas and handcrafted cocktails in a casual atmosphere, then retreat to your chic room with luxury bedding, spacious workstations and free high-speed Wi-Fi. Start the day with a delicious breakfast at AC Kitchen, and then head to our 24-hour fitness center to exercise or take a refreshing dip in our heated outdoor pool. If you'll be hosting a small business or social function, reserve one of our flexible event venue spaces. Whatever brings you to town, you'll experience a successful stay at AC Hotel Irvine.

Photo: Destination Irvine

Address: 3309 Michelson Dr., Irvine, CA 92612

Internet:

<https://www.marriott.com/hotels/travel/snaai-ac-hotel-irvine/>

Atrium Hotel

Resort-style setting. Self-service laundry, on-site car rental and business center services. Complimentary local shuttle.

Address: 18700 MacArthur Road, Irvine

Phone: + 1 949 833 2770

Internet: www.atriumhotel.com

Candlewood Suites Irvine Spectrum



This hotel location offers easy access to all the best parts of Irvine and Orange County without that busy, crowded feeling. The hotel is

tucked away in the quiet Hoag-Irvine campus with easy access to I405 and I5. Our hotel has newly renovated guest suites featuring fully equipped kitchens and all the right amenities to make us your home away from home. Borrow movies or music from hotel DVD and CD library. Stay in shape in our hotels fitness center. Enjoy a healthy meal or snack 24 hours a day from our selections in the Candlewood Cupboard on site convenience store and complimentary laundry. Invite your friends and coworkers over for a cookout at the Candlewood Gazebo. Book your stay today and "Consider Us Home."

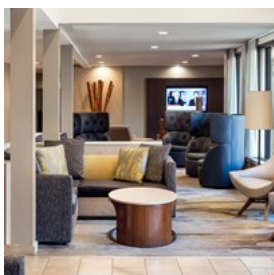
Photo: Destination Irvine

Address: 16150 Sand Canyon Avenue, Irvine

Phone: + 1 949 788 0500

Internet: www.ihg.com/candlewood

Courtyard by Marriott, Irvine Airport



An oasis in the middle of Orange County, Courtyard Irvine John Wayne Airport/Orange County invites you to savor superior service,

plush accommodations, superb dining and thoughtful amenities.

Photo: Destination Irvine

Address: 2701 Main Street, Irvine

Phone: + 1 949 757 1200

Internet: www.irvinecourtyard.com

Courtyard Irvine Spectrum



The Courtyard Irvine Spectrum is a 210-room, 8-story hotel at the northeast corner of the intersection of Alton Parkway and Irvine

Center Drive, walking distance to the Irvine Spectrum Center. The hotel features include: 5,500 square feet of indoor meeting space with large pre-function area, and 2,300 square feet of outdoor meeting space Expansive pool area featuring a 75 foot lap pool with swimming lanes, a spa area and poolside cabanas Putting green Large well-equipped fitness center Lobby "Bar" and Lounge Board room Guest laundry Onsite convenience market.

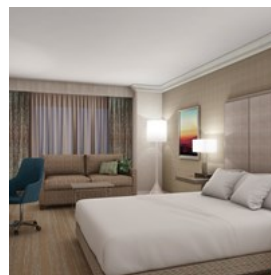
Photo: Destination Irvine

Address: 7955 Irvine Center Drive, Irvine

Phone: + 1 949 453 1033

Internet: www.courtyardirvine.com

DoubleTree by Hilton, Irvine Spectrum



Only AAA three-diamond, full-service hotel in Irvine Spectrum area.

Newly-renovated restaurant (90 Pacifica) serving breakfast, lunch and dinner. Complimentary shuttle service also available to local offices. Room service, business center, outdoor pool.

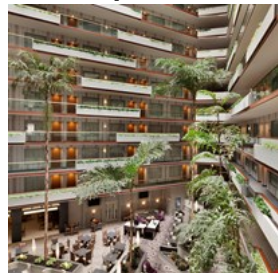
Photo: Destination Irvine

Address: 90 Pacifica, Irvine

Phone: + 1 949 471 8888

Internet: www.irvinespectrum.doubletree.com

Embassy Suites Irvine

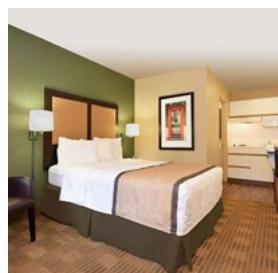


\$12 Million Makeover Complete in 2016. The Embassy Suites by Hilton - Irvine is for today's traveler, who expects a hotel where modern

meets convenience and guests are like family. Our hotel family promises to make you feel at home with thoughtful, caring and genuine hospitality for an unparalleled experience. Premiere accommodations offering a comfortable and stylish base just one mile from John Wayne/Orange County Airport, the hotel is also near Disneyland(R) Resort, University of California-Irvine and the Anaheim Convention Center. Courtesy shuttle for John Wayne/Orange County Airport and local attractions within 2 miles. Spacious Two-Room Suites and a limited number of guest studios. Suites feature wet bar with mini-fridge, microwave, coffee maker, in-room safes and our fast and reliable Wi-Fi network will keep you connected. Complimentary cooked-to-order breakfast and a full bar with snacks at the Evening Reception is served daily in the atrium. On property dining options include Vibrante SoCal Kitchen & Bar available for lunch and dinner and a full service Starbucks Coffee store located in the main lobby.

Photo: Destination Irvine
Address: 2120 Main Street, Irvine
Phone: + 1 949 553 8332
Internet: www.irvineoc.embassysuites.com

Extended Stay America



Newly renovated, designed for longer stays with studio suite rooms featuring fully equipped kitchens.

Photo: Destination Irvine
Address: 30 Technology Drive, Irvine
Phone: + 1 949 727 4228
Internet: www.extendedstayamerica.com

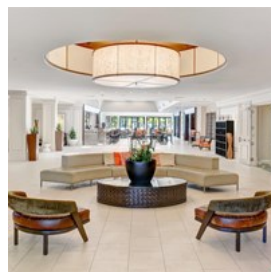
Hampton Inn & Suites Irvine/Orange County Airport



Relax in spacious one-bedroom or studio suites and settle down for a cozy night in the clean and fresh Hampton bed. Suites feature home-like amenities, such as, comfortable sofa, (queen-size sofa sleepers available in most suites), lounge chair, work desk, microwave, refrigerator, and coffee/tea maker.

Photo: Destination Irvine
Address: 2192 Dupont Drive, Irvine, CA 92612

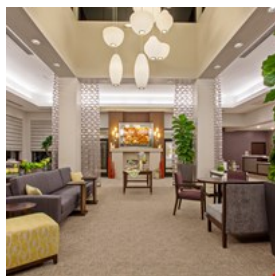
Hilton Irvine



Upscale AAA three-diamond property located in the heart of Orange County. Centrally located to all local freeways. Hotel has all that is needed to make your stay enjoyable with beautifully appointed rooms, heated pool, whirlpool, complimentary fitness center and complimentary shuttle to and from John Wayne Airport.

Photo: Destination Irvine
Address: 18800 MacArthur Boulevard, Irvine
Phone: + 1 949 833 9999
Internet: www.hiltonirvineorangecounty.com

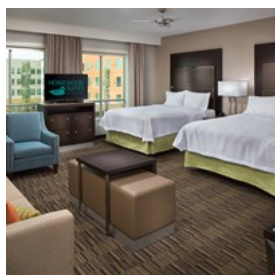
Hilton Garden Inn



Situated one mile from Orange County/John Wayne Airport, the BRAND NEW Hilton Garden Inn Irvine/Orange County Airport is located within walking distance of the Irvine Business Complex. Enjoy easy access to popular attractions including the Disneyland Resort and South Coast Plaza - recognized internationally for its unparalleled retail collection and award-winning restaurants. The beautiful beaches of coastal Southern California are just minutes from our modern Irvine, CA hotel. Settle into a spacious guest room or suite, and enjoy homelike amenities, including complimentary WiFi, a microwave, a mini-refrigerator, a large desk, and a luxurious Serta Perfect Sleeper bed. You can also advantage of secure remote printing direct to the complimentary 24-hour business center. With over 2,500 sq. ft. of versatile meeting space, and a dedicated team of professional staff on hand to take care of every detail; this Irvine, California, hotel is the perfect venue for business and social events for up to 120 people.

Photo: Destination Irvine
Address: 2381 Morse Avenue, Irvine
Phone: + 1 877 782 9444
Internet: www.hiltongardeninn.com

Homewood Suites Irvine John Wayne Airport



Upscale all-suite hotel featuring complimentary breakfast served daily, an Evening Social Mon - Thurs., outdoor heated pool and spa, game room, sports court, on-site laundry, complimentary Wi-Fi, 1,500 square feet of meeting space and

complimentary airport shuttle.

Photo: Destination Irvine
Address: 17370 Red Hill Avenue, Irvine, CA 92614
Internet: <https://www.hilton.com/en/hotels/snajwhw-homewood-suites-irvine-john-wayne-airport/>

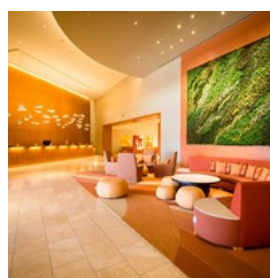
Hyatt House Irvine/John Wayne Airport



At Hyatt House Irvine/John Wayne Airport, relax in a modern hotel in Irvine's Central Business District just moments from John Wayne Airport. You'll feel right at home in our residential-style accommodations, perfect for families or extended stays. Take advantage of free daily breakfast, the outdoor pool, 24-Hour Workout Room, and ideal Irvine meeting space.

Photo: Destination Irvine
Address: 2320 Main Street, Irvine, CA 92614
Internet: <https://www.hyatt.com/en-US/hotel/california/hyatt-house-irvine-john-wayne-airport/snaxi>

Hotel Irvine



Hotel Irvine features personalized service, pops of bright color and energy bursting from every space. With over 500 stylish rooms & suites and exceptional food & beverage options, we've thoughtfully designed every space and amenity with only one thing in mind—you. We're not like other hotels, and that's kind of the point. Our spot-on location plugs you into the best indoor and outdoor escapes that OC has to offer. Postcard-perfect beaches, world-class golf, famed shopping, thrilling sports venues—it's all here and at your fingertips. Not to mention, getting here is breeze with just a short three-mile drive to and from John Wayne Airport.

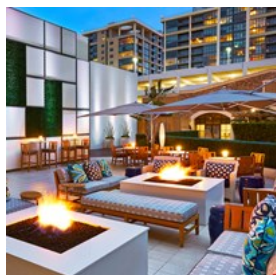
Photo: Destination Irvine

Address: 17900 Jamboree Boulevard, Irvine

Phone: + 1 888 230 4452

Internet: www.hotelirvine.com

Irvine Marriott



Experience the chic new, high-tech, high touch Marriott Greatroom lobby with new restaurant, bar and lounge and ultra-plush revitalized

guestrooms.

Photo: Destination Irvine

Address: 18000 Von Karman Avenue, Irvine

Phone: + 1 949 553 0100

Internet: www.irvinemarriott.com

La Quinta by Wyndham Irvine Spectrum



Listed in the National Register of Historical sites. Plentiful and modern amenities including free Bright Side Breakfast and

complimentary local area shuttle.

Photo: Destination Irvine

Address: 14972 Sand Canyon Avenue, Irvine

Phone: + 1 949 551 0909

Internet: www.laquintairvinespectrum.com

Marriott Irvine Spectrum



Experience the vitality of Orange County at the New Marriott Irvine Spectrum. Discover our premium location, centrally located within

walking distance from the Irvine Spectrum Center and minutes from Disneyland® and the Orange County Airport. Enjoy best-in-class

service at one of our on-site restaurants, including our exciting rooftop bar, and relax in our luxuriously appointed guest rooms and extended-stay suites. And, with 19,000 sq. ft. of total event space, the Marriott Irvine Spectrum is the perfect place to host your next work event or celebration.

Photo: Destination Irvine

Address: 7905 Irvine Center Drive, Irvine, CA 92618

Internet: <https://www.marriott.com/hotels/travel/snmc-marriott-irvine-spectrum/>

Residence Inn by Marriott, Irvine/Orange County Airport



All the conveniences of home - relax in our over-sized suite rooms with fully-equipped kitchens. Complimentary breakfast buffet and parking, executive board room and meeting space to accommodate up to 70 people.

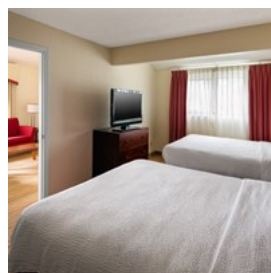
Photo: Destination Irvine

Address: 2855 Main Street, Irvine

Phone: + 1 949 261 2020

Internet: www.marriott.com/snaiv

Residence Inn by Marriott, Irvine Spectrum



Room to work, unwind and enjoy. Our suites provide a home-away-from-home with fully-equipped kitchens. Complimentary hot breakfast buffet and weeknight socials. Stay connected with free Wi-Fi in lobby and suites..

Photo: Destination Irvine

Address: 10 Morgan, Irvine

Phone: + 1 949 380 3000

Internet: www.marriott.com/snair

SpringHill Suites by Marriott Irvine, John Wayne Airport/Orange County



Marriott's upscale studio features 37-inch HDTV, luxury bedding and well-equipped pantry. 24-hour business center and complimentary

parking. All rooms are suites. Full breakfast buffet included. Marriott reward points earned. Putting green. Patio with fire pits. Complimentary shuttle. Free Internet. Microwave, fridge and coffee maker in every room. Beautiful new hotel!

Photo: Destination Irvine
Address: 17601 Fitch, Irvine
Phone: + 1 949 757 0500
Internet: www.marriott.com/snaap

Sonesta Irvine Orange County Airport



Just minutes from John Wayne Airport, Sonesta Irvine - Orange County Airport is ideal for family vacations and business trips alike. Settle in and

relax with us under the warm California sun as you set out to explore the cultural and fun-filled attractions of our corner of the state. There's ample flexible meeting space and complimentary Wi-Fi to help you stay productive, a full range of amenities and facilities designed to make your stay comfortable and seamless, and beautiful beaches and famed sites nearby sure to make your Irvine visit truly memorable, no matter the reason for your stay. And when it's time to unwind, catch a workout in the fitness center, take a dip in the pool or stop by the Copper Chef Kitchen & Bar for a drink and a thoughtfully prepared meal.

Photo: Destination Irvine
Address: 17941 Von Karman, Avenue, Irvine
Phone: + 1 949 863 1999
Internet: www.wyndham.com

TOURIST INFORMATION



Destination Irvine

John Wayne Airport

Air travel to Orange County has a reputation for being hassle free thanks to passenger-friendly John Wayne Airport (SNA). An asset to Irvine's business community, SNA offers 20 non-stop flights to and from the United States, Canada and Mexico and is served by 10 commercial passenger airlines.

The airport is serviced by a variety of airlines. Airline ticket counters are located on the Departure (upper) Level of Terminals A, B and C. Baggage claim and baggage claim offices are located on the Arrival (lower) Level.

The airport has 20 commercial (Gates 2-22) and 6 commuter gates (Gates 1A, B, C and 22A, B, C), numbered geographically from the north to the south. All gates can easily be accessed from any terminal and security checkpoint.

A variety of ground transportation options are available at John Wayne Airport (JWA) conveniently connecting the Airport to

surrounding hotels, tourist attractions, businesses and residences.

Address: 18601 Airport Way, Santa Ana, CA 92707

Phone: + 1 949 252 5200

Internet: www.ocair.com

Email: info@ocair.com

The Toll Roads

The Toll Roads are the largest toll road network in California, totaling 51 miles and accounting for more than 20 percent of Orange County highways. Developed and operated by Transportation Corridor Agencies (TCA), the network is comprised of the 73, 133, 241 and 261 Toll Roads.

Cash tolling is no longer accepted on The Toll Roads, but there are now new ways to pay. Drivers can pay tolls with FasTrak®, an ExpressAccount™ or use One-Time-Toll™.

One-Time-Toll is the ideal choice for out-of-town visitors and infrequent users of The Toll Roads. No account necessary - users drive the 73, 133, 241 or 261 Toll Roads anytime, day or night, then pay within 48 hours after driving on The Toll Roads. Drivers can pay online at thetollroads.com or by using The Toll Roads app.

Internet: www.thetollroads.com

Time Zone

Irvine is located in the Pacific time zone, and all times are reflected in Pacific time (PST).

Public Transport

The Irvine Shuttle (iShuttle), offers two convenient routes throughout the city, including stops at the airport, the shops and eateries of Diamond Jamboree, the Irvine Museum, popular restaurants, the Tustin Metrolink Station and Irvine's larger hotels. Fares are just \$1 or \$.50

for peak and off-peak hours, respectively.

Irvine is also served by busses of the Orange County Transportation Authority (OCTA), and the Irvine Station offers convenient rail service from Amtrak and Metrolink, putting coastal Southern California from San Diego to San Luis Obispo in easy reach.

Internet: www.cityofirvine.org/cityhall/pw/ishuttle

Taxi

John Wayne Airport Yellow Cab offers convenient taxicab service to travelers from the Ground Transportation Center (GTC) on the Arrival (lower) Level between Terminals A and B. Passengers arriving in Terminal C can call Yellow Cab from the Taxi Phone in Terminal C (near Baggage Carousel 5), for pickup at Column 14 on the Arrival (lower) Level. Taxicabs include standard 4-passenger vehicles, large capacity 7-passenger vans, and wheelchair access vans, and because Compressed Natural Gas powers the cabs, you'll be riding in some of the greenest yellow vehicles in Orange County! Look for the taxi coordinators who can assist you and get you on your way.

JWA Yellow Cab

+1 714 999 9999

+1 949 999 TAXI (8294)

+1 714 444 4444

+1 949 444 4444

All taxicabs operating at John Wayne Airport are licensed through the Orange County Taxi Administration Program (OCTAP), a voluntary association of Orange County Agencies created to centralize taxicab regulation, coordinate taxicab services, and provide other administrative functions, under the direction of

the Orange County Transportation Authority (OCTA). The OCTAP site allows customers to:

- * Search current names and numbers of approved taxi companies in the OC Area
- * Ensure payment of the correct amount for a cab ride and check updated taxi fares
- * Report a problem with a taxicab ride, driver or company

Telephone

Country Code: +1

Area Code in Irvine: 949

Electricity

110V AC, 60Hz

Population

282,572

Currency

U.S. dollar = 100 cents

Internet

www.destinationirvine.com

Newspapers

Orange County Register
Irvine Standard

Emergency numbers

911