



Jervis Bay

in collaboration with Destination NSW for Jervis Bay

Photo: Dolphin Watch Cruises/Destination NSW for Jervis Bay



Dolphin Watch Cruises/Destination NSW for Jervis Bay

Explore beautiful Jervis Bay within the unspoilt region of the NSW South Coast. Discover fine white sands and crystal clear waters in a marine park home to dolphins and seals. You'll also marvel at majestic whales as they migrate along the coast. Enchanting national parks are great for bushwalking and are filled with native wildlife and fascinating Aboriginal heritage. Enjoy water activities including kayaking, boating, fishing, diving and surfing. This magnificent region offers relaxation in spectacular settings where you can do as much or as little as you choose.



James Pipino/Destination NSW for Jervis Bay



James Pipino/Destination NSW for Jervis Bay

QUIZ
*What Type of Traveller
Are You Based on
Your Travel IQ?*

TAKE THE QUIZ

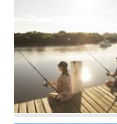
Top 5



Booderee National Park
Booderee National Park is a place of outstanding natural beauty offering a w...



Coastal Camping
Enjoy a camping experience unlike any other by setting up a tent with your f...



Fishing
Jervis Bay is one of the most popular fishing destinations on the NSW South ...



Whale Watching
Watch these majestic creatures swim and play in the waters along the NSW Sou...



Stand-up Paddleboarding
The Jervis Bay area features several lakes, inlets and calm surf beaches fro...



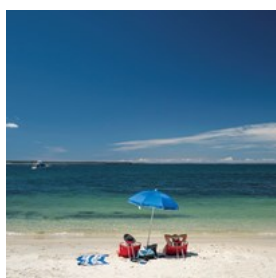
THE CITY



Dolphin Watch Cruises/Destination NSW for Jervis Bay

The main town of the beautiful Jervis Bay area is Huskisson, where you can join dolphin-watching cruises throughout the year and whale-watching cruises between May and November. Enjoy casual waterside meals and browse through the town's boutiques. The natural unspoilt beauty of Jervis Bay is enchanting. At its southern end, Jervis Bay is enclosed by Booderee National Park, a magnificent wilderness. One of the best ways to enjoy the natural beauty of Jervis Bay is on foot. The White Sands Walk is an easy, hour-long walk across some of the whitest sands in the world.

Huskisson



A beautiful town with a rich shipbuilding heritage, Huskisson is on the shores of the spectacular Jervis Bay Marine Park in the

Shoalhaven region. The crystal-blue waters are home to abundant marine life, including bottlenose dolphins, fur seals, little penguins and weedy sea dragons.

Photo: Dee Kramer Photography

Internet: <https://www.visitnsw.com/destinations/south-coast/jervis-bay-and-shoalhaven/huskisson>

TOP THINGS TO DO



Dolphin Watch Cruises/Destination NSW for Jervis Bay

Experience nature up close in the unspoilt region of Jervis Bay. Explore Booderee National Park on a bushwalk, go stand-up paddleboarding or kayaking with resident dolphins in the sparkling waters of the marine park, or enjoy whale watching from a coastal lookout.

Booderee National Park



Booderee National Park is a place of outstanding natural beauty offering a wide range of activities including bushwalking, camping, cycling,

boating, swimming, fishing and snorkelling.

Booderee is owned by the Wreck Bay Aboriginal Community and is a significant place for Koori people. Learn about Koori culture and traditional foods through Booderee's Aboriginal interpretive program.

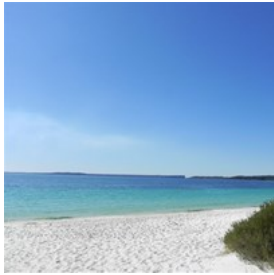
Photo: Alexandra Orme - Parks Australia

Address: Jervis Bay Road, Jervis Bay, NSW 2540

Phone: +61 2 4443 0977

Internet: www.visitnsw.com/destinations/south-coast/jervis-bay-and-shoalhaven/jervis-bay/attractions/booderee-national-park

Coastal Camping

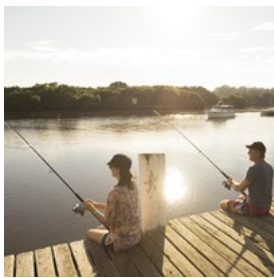


Enjoy a camping experience unlike any other by setting up a tent with your family and friends on the beaches around Jervis Bay. Camp moments away from the beach at the Bristol Point, Cave Beach and Green Patch camp grounds located within the beautiful Booderee National Park.

Photo: Jean Elinor - Parks Australia

Internet: www.visitnsw.com/destinations/south-coast/jervis-bay-and-shoalhaven/camping

Fishing



Jervis Bay is one of the most popular fishing destinations on the NSW South Coast. The rock platforms on the northern side of the bay are renowned for land-based game fishing for species such as marlin, tuna and kingfish. Inside the bay, chase bream, whiting and flathead from many of the beaches. Experienced local fishing operators offer great fishing adventure tours in and around the bay.

Photo: Discover Jervis Bay

Internet: www.visitnsw.com/destinations/south-coast/jervis-bay-and-shoalhaven/fishing

Whale Watching



Watch these majestic creatures swim and play in the waters along the NSW South Coast during their annual migration between May and November. Whale numbers have risen

substantially around Jervis Bay in recent years, making the area a great place to watch these graceful mammals from shore or the deck of a tour boat. The viewing platform in Booderee National Park, located at Cape St George Lighthouse, is a splendid observation point. Perpendicular Lighthouse, at the southern end of the Becroft Peninsula in the Jervis Bay Military Reserve, also offers a good vantage point.

Photo: Jervis Bay Wild

Internet: www.visitnsw.com/destinations/south-coast/jervis-bay-and-shoalhaven/whale-watching

Stand-up Paddleboarding



The Jervis Bay area features several lakes, inlets and calm surf beaches from where you can begin a stand-up paddleboarding

adventure. Most locations have nearby parking if you're bringing your own paddleboard, or there are several operators along the coast offering rental, tours and private or group lessons. Paddleboarding in the Jervis Bay Marine Park gives you the chance to be surrounded by colourful sea life including dolphins, eagle rays, penguins, fish and birds.

Photo: Mason Keane - Jervis Bay Stand Up Paddle

Internet:

www.visitnsw.com/things-to-do/tours/jervis-bay-stand-paddle

DO & SEE



James Pipino/Destination NSW for Jervis Bay

Discover Jervis Bay's cultural heritage in its museums, historical sites and along scenic walks in the beautiful national parks and on uncrowded beaches. Wriggle your toes in the fine sands at Hyams Beach, famous for its brilliant white sands. Enjoy dolphin- and whale-watching tours in this paradise on the majestic NSW South Coast.

Shoalhaven Zoo



Shoalhaven Zoo is the largest zoo on the New South Wales South Coast, bringing together over 100 species of native and exotic mammals, birds,

and reptiles. Set in 16 acres of native bushland and resting on the banks of the beautiful Shoalhaven River, you'll find plenty to see and do during your visit.

After spending time exploring the zoo you can relax with a picnic by the river, cook up a barbecue or eat in the delightful Zoo Haven Cafe while taking in the wonderful views. And before you leave, don't forget to browse through the gift shop where you will find a great selection of souvenirs to remind you of your visit.

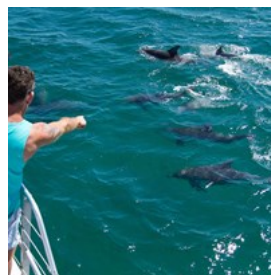
Photo: Katie Rivers - Shoalhaven Tourism
Address: 23 Rockhill Road, North Nowra NSW 2541

Phone: +61 2 4421 3949

Tickets: From \$17

Internet: <https://www.visitnsw.com/destinations/south-coast/jervis-bay-and-shoalhaven/nowra/attractions/shoalhaven-zoo>

Dolphin Watch Cruises Jervis Bay



Dolphin Watch Cruises - the most experienced cruise company in Jervis Bay, operating for over 25 years, who have now won more than 25

tourism awards.

Jervis Bay is home to 120 resident bottlenose dolphins who live inside Jervis Bay all year round. The average sighting rate for dolphins is 99 per cent. Dolphin cruises are available all year round.

Whale season is mid May to late November and you can see humpbacks, southern right, minke, as well as seals, penguins and albatross.

TEKIN III The Spirit of Jervis Bay, is a 17 metre triple deck catamaran, with five viewing platforms and is 80 per cent under cover for all weather cruising. Dolphin and whale watch cruises include complimentary morning/afternoon tea.

Photo: Dolphin Watch Cruises

Address: 50 Owen Street, Huskisson NSW 2540

Phone: +61 2 4441 6311

Internet: <https://www.visitnsw.com/things-to-do/tours/dolphin-watch-cruises-jervis-bay>

Sea Kayak Jervis Bay



Sea Kayak Jervis Bay (SKJB) is a fully accredited Outdoor Adventure Tour Operator with over 20 years of full time operation in the

Jervis Bay region of the South Coast of NSW. The Jervis Bay Marine Park, 2.5 hours south of

Sydney, offers world class bay, sea, river and mangrove paddling experiences in crystal clear waters, with white sands, protected coves and surf breaks hosting resident dolphins, migrating Humpbacks and abundant fish and bird life. Sea Kayak Jervis Bay offer a range of quality kayaking tours, courses and outdoor education activities. Enjoy a day of adventure with their popular sea kayak trip, a simple short Sit On Top paddle with the family, an overnight camp or go it alone by hiring from their modern fleet of Expedition Sea Kayaks on Jervis Bay and surrounding waterways.

Photo: Sea Kayak Jervis Bay
Address: Unit 2 / 3 Snapper Road, Woollamia NSW 2540
Phone: +61 2 4441 7027
Internet: <https://www.visitnsw.com/things-to-do/tours/sea-kayak-jervis-bay>

Trees Adventure Nowra Park



Trees Adventure is an eco-adventure experience. The park features exciting and challenging courses high in the tree canopy, that will have you swinging, leaping, climbing and flying through the forest.

The course lets you experience Australia's unique landscape, allowing thrill seekers and nature enthusiasts to experience the trees like never before.

Flying foxes zip between the trees at exhilarating speeds, while cargo nets, rope bridges and wooden obstacles offer physical challenges high above the ground. There's even an airborne skateboard!

The courses become increasingly difficult as you climb higher into the canopy, which means that you can find the right level to suit you.

Suits ages from four years up to adult, and yes,

there are even extreme "black" courses for the really adventurous!

Photo: Trees Adventure Nowra Park
Address: 23 Rock Hill Road, North Nowra NSW 2541
Opening hours: Closed Christmas Day & New Years Day
Phone: +61 2 4421 4830
Tickets: From : \$ 25 - To \$ 48
Internet: <https://www.visitnsw.com/destinations/south-coast/jervis-bay-and-shoalhaven/nowra/attractions/trees-adventure-nowra-park>
More Info: Bookings are essential.

Cambewarra Estate Winery



Cambewarra Estate Winery lies at the foothills of the majestic Cambewarra Mountain in the Shoalhaven Coast wine region - only 2.5

hours South from Sydney.

A 2nd generation family run winery, with a focus on quality over quantity. Cambewarra Estate Winery offer a diverse range of premium, award winning wines, with something to suit everyone. The Estate features a cellar door, restaurant, a boutique garden studio Bed and Breakfast, a function centre and stunning outdoor surrounds ideal for weddings, private functions and events. Their child and pet friendly cellar door is open every Friday, Saturday, Sunday and Public Holidays.

Photo: Cambewarra Estate Winery
Address: 520 Illaroo Road, Bangalee NSW 2541
Phone: +61 2 4446 0170
Internet: <https://www.visitnsw.com/destinations/south-coast/jervis-bay-and-shoalhaven/nowra/food-and-drink/cambewarra-estate-winery>

Two Figs Winery



Two Figs is a boutique winery and vineyard located 12 kilometres from Berry. Its spectacular position offers panoramic 360

degree views from the beaches of Shoalhaven Heads along the expanse of the Shoalhaven River and beyond.

Two Figs vineyard was planted in 2003. The winery is now producing wines including Cabernet Sauvignon, Chardonnay, Chambourcin and Verdelho. The climate is temperate with maritime influences and produces soft, approachable wines.

Winemaker Shayne Bricker now offers these premium wines for tasting on the cellar door with himself or Leah amidst the equipment and barrels of a working winery.

Come and buy a bottle of wine and a gourmet local plate and enjoy the scenery.

Photo: Two Figs Winery

Address: 905 Bolong Road, Berry NSW 2535

Phone: +61 2 4448 5003

Internet: <https://www.visitnsw.com/destinations/south-coast/jervis-bay-and-shoalhaven/berry/food-and-drink/two-figs-winery>

Fleet Air Arm Museum



The Royal Australian Navy invites you, your family and friends to visit the Fleet Air Arm Museum at HMAS Albatross Nowra. Explore

and experience the story of naval aviation from its beginnings to the present day.

The current exhibition "Wings over Water" tells the story of naval aviation in Australia, with aircraft from the 20th Century, ranging from a

World War One Sopwith Pup to an A4 Skyhawk jet fighter. The exhibition also includes examples of allied and foreign aircraft, like the MiG-17 fighter. Showcases and audio visual displays add to the stories of these aircraft and those who flew and fixed them.

Individual displays include the US 135th Assault Helicopter that incorporated the RAN Helicopter Flight-Vietnam and a special exhibit on Admiral Sir Victor Smith. The Museum's flight simulator provides a 'virtual experience', for all ages, on what it is like in the pilot's seat.

Photo: Fleet Air Arm Museum

Address: 489a Albatross Road, Nowra NSW 2541

Phone: +61 2 4424 1920

Internet: <https://www.visitnsw.com/destinations/south-coast/jervis-bay-and-shoalhaven/nowra/attractions/fleet-air-arm-museum>

Lyrebird Ridge Organic Winery



Lyrebird Ridge do not charge a tasting fee for individual visitors, and while visiting their cellar door you are welcome to take your time and

wander around the property. Your hosts embrace the opportunity to answer any questions and to discuss all aspects of Lyrebird Ridge.

A barbecue area is available to those seeking a pleasant, covered area for a barbecue or picnic lunch, and the grassed area adjacent is perfect for the children to play under your supervision. Lyrebird Ridge Organic Winery offers visitors a chance to try high quality wine produced without the use of chemicals, herbicides and pesticides. The organic wines are grown and produced at the winery and are aged in underground cellars. The cellar door operates by appointment. If you are visiting the area and would like to come for a visit please phone ahead so they can organise a

suitable time.

Photo: Lyrebird Ridge Organic Winery

Address: 270 Budgong Road, Budgong NSW 2577

Phone: +61 2 4446 0648

Internet: <https://www.visitnsw.com/destinations/south-coast/jervis-bay-and-shoalhaven/nowra/food-and-drink/lyrebird-ridge-organic-winery>

Jindyandy Mill



The historic Jindyandy Mill is one of the most popular one stop shopping destinations on the South Coast, just five minutes off the highway

from Nowra.

The Mill itself was built in 1830 and was the first convict built brick building south of Sydney. Set in a picturesque parkland with relaxing views across the paddocks and river flats to the mountains.

There are five specialty shops including Antiques, Dress shop, Hairdresser, Bric-a-brac, and a delicious Lolly shop, gift and Christmas store.

There is also a cafe featuring fabulous locally sourced organic cuisine.

Plenty of easy parking and lots of room to stretch your legs. Treats, treasures and bargains you won't find anywhere else.

Photo: Sally Marshman

Address: 719 Greenwell Point Road, Pyree NSW 2540

Phone: +61 2 4447 0258

Internet: <https://www.visitnsw.com/destinations/south-coast/jervis-bay-and-shoalhaven/culburra-beach/attractions/jindyandy-mill>

Booderee Botanic Gardens



Booderee Botanic Gardens are owned by the Wreck Bay Aboriginal Community and are the only Aboriginal owned botanic gardens in

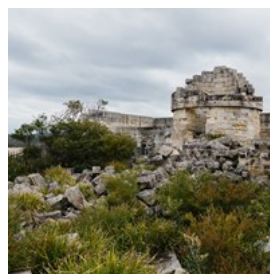
Australia. Learn about bush tucker, the medicinal uses of plants and the long association that Koori people have had with the area. A range of facilities and services are available to help visitors explore the gardens, including formed paths, self-guided and guided walks, interpretive displays and picnic areas.

Photo: Alexandra Orme - Parks Australia

Phone: +61 2 4443 0977

Internet: www.visitnsw.com/destinations/south-coast/jervis-bay-and-shoalhaven/jervis-bay/attractions/booderee-national-park-botanic-gardens

Cape St George Lighthouse



The heritage-listed Cape St George Lighthouse ruins are perched on the edge of spectacular cliffs in Booderee National Park. The lighthouse

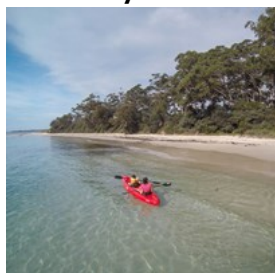
lookout offers stunning sea and cliff views - a fantastic place to watch whale migrations between May and November.

Photo: Alexandra Orme - Parks Australia

Phone: +61 2 4443 0977

Internet: <https://www.visitnsw.com/destinations/south-coast/jervis-bay-and-shoalhaven/jervis-bay/attractions/booderee-national-park-cape-st-george-lighthouse>

Jervis Bay Marine Park



The Jervis Bay Marine Park is home to dolphins, seals, penguins, seabirds and many other animals. Scuba diving, snorkelling, swimming, surfing and

fishing are popular activities in the crystal clear waters. Explore various walking trails available in the surrounding Jervis Bay National Park and see whales swim through these waters during their annual migration along the coast between May and November.

Photo: Discover Jervis Bay

Phone: +61 2 4428 3000

Internet: www.visitnsw.com/destinations/south-coast/jervis-bay-and-shoalhaven/jervis-bay/attractions/jervis-bay-marine-park

Jervis Bay National Park



With white sands, crystal clear waters, forests, woodlands and wetlands, this beautiful South Coast national park is a popular destination. Its Aboriginal

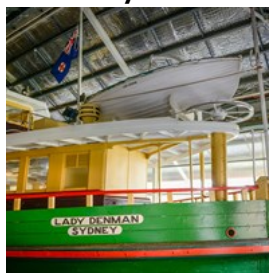
heritage dates back thousands of years and local Aboriginal people have strong connections with the land and waters. Explore the incredible White Sands Walk and Scribbly Gum Track, relax on uncrowded beaches, and swim, fish or snorkel in the invigorating waters.

Photo: Destination NSW

Phone: +61 2 4428 3000

Internet: www.visitnsw.com/destinations/south-coast/jervis-bay-and-shoalhaven/jervis-bay/attractions/nsw-jervis-bay-national-park

Jervis Bay Maritime Museum



Discover the history of Jervis Bay at this fascinating museum. The centrepiece is the Lady Denman, a wooden Sydney Harbour ferry

built in Huskisson in 1911 and retired in 1979. She was returned home in 1980 and now rests in a purpose-built building. At a waterfront location on Currambene Creek, the museum is in a beautiful bush setting and includes a large recreation area with native gardens, a mangrove boardwalk, fish feeding pond, boathouse, and historic buildings.

Photo: Jervis Bay Maritime Museum

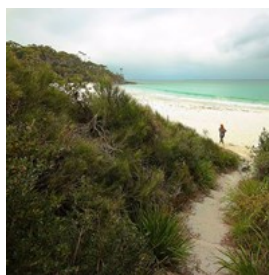
Address: 4 Woollamia Road, Huskisson, NSW 2540

Opening hours: 10am - 4pm daily

Phone: +61 2 4441 5675

Internet: <http://www.visitnsw.com/destinations/south-coast/jervis-bay-and-shoalhaven/huskisson/attractions/jervis-bay-maritime-museum>

White Sands Walk and Scribbly Gum Track



The White Sands Walk and the Scribbly Gum Track are interconnected walking trails that create a delightful - and easy - loop within Jervis Bay

National Park. Start the White Sands Walk at Greenfield Beach picnic area, or begin farther north at Plantation Point to enjoy a longer route. You'll be treated to incredible water views and visit great locations for birdwatching and glimpsing dolphins. The return leg along the Scribbly Gum Track takes you through scenic woodland.

Photo: Andy Richards

Internet: <https://www.visitnsw.com/destinations/south-coast/jervis-bay-and-shoalhaven/vincentia/attractions/white-sands-w>

alk-and-scribbly-gum-track

CAFE, RESTAURANTS AND BARS



Destination NSW for Jervis Bay

Taste delicious cuisine, from modern Australian to Thai and Mexican, or enjoy a memorable experience dining among the treetops at The Gunyah Restaurant. You'll also find fresh fish and chips at charming bayside towns.

Yarrawa Estate



Yarrawa Estate Vineyard is nestled in between the rugged escarpments of Upper Kangaroo Valley, offering unmatched scenic beauty. This

vineyard enjoys a temperate climate with rich volcanic and alluvial soils, providing an ideal environment for viticulture.

Farm tours available by appointment to observe macadamia, walnut, pecan, and Japanese raisin trees plus large citrus grove. Seasonal farm produce is also available for purchase.

Visit Yarrawa Estate cellar door for wine tastings. Sample nuts, jams, and pickles whilst enjoying the picturesque views.

Wines produced include chambourcin (spray free and hand-picked), unwooded chardonnay (clean and fruity), verdelho (lovely summer wine), chardonnay (softly wooded, complements seafood, poultry), cabernet (Barossa Valley

grapes), shiraz (mature, full bodied wine, great with most foods, pinot noir brut (apertif style with crisp finish), sauvignon blanc/semillon (easy drinking luncheon wine, Jasmin Grace (made with muscatel grapes, everyone's favourite) Their fortifieds include white port, red port, muscat and walnut liquor wine.

Photo: Yarrawa Estate

Address: 43B Scotts Road, Upper Kangaroo River NSW 2577

Internet: <https://www.visitnsw.com/destinations/country-nsw/southern-highlands/food-and-drink/yarrawa-estate>

Flour Water Salt



The philosophy of Flour Water Salt is simple. Yes, simple. They believe you don't have to do a million things, just a few and do those few right. They

don't offer countless types of breads, cakes or sandwich varieties, just a few that they think are delicious, and they hope that you will think so too.

Quality ingredients, skilled producers and passion - from start to finish.

Photo: Flour Water Salt

Address: 87 Princes Highway, Milton NSW 2538

Phone: +61 2 4454 2504

Internet: <https://www.visitnsw.com/destinations/south-coast/jervis-bay-and-shoalhaven/milton/food-and-drink/flour-water-salt>

Portside Seafood Bar and Grill



Visit Jervis Bay Wild's waterfront café and be mesmerised by the breathtaking views overlooking the pristine waters of Jervis

Bay.

Portside has indoor or alfresco dining, where you

can enjoy anything from decadent cakes to their amazing seafood platter while perhaps being lucky enough to watch dolphins play in the bay. The cruise terminal opens onto the restaurant's deck from which their world class cruises depart, making it a truly beautiful view with options for you to enjoy a cruise or grab a kayak after your lunch.

Portside Seafood Bar and Grill is fully licensed (no Bring Your Own), has fully accessible amenities with a lift from Field Street, Huskisson, straight into the restaurant.

Photo: Jervis Bay Wild

Address: 58 Owen Street, Huskisson NSW 2540

Phone: +61 2 4441 6964

Internet: <https://www.visitnsw.com/destinations/south-coast/jervis-bay-and-shoalhaven/huskisson/food-and-drink/portside-seafood-bar-and-grill>

Figbird Cafe and Deli



Figbird Café and Deli, tucked away from the bustling main street of Berry, boasts a welcoming atmosphere, delicious European and Australian inspired meals, and attentive service.

During the day, their light-filled café and deli is the perfect place to enjoy a hearty breakfast or lunch with friends, while at night it transforms into a candle-lit restaurant featuring delectable Mediterranean fare, and authentic pizzas on Wednesday and Thursday evenings.

You will find the coffee delicious, the portions generous and the prices reasonable. Gluten, wheat and grain free options are available, ask their friendly staff. Figbird Café and Deli is proud to actively support organic and fair-trading practices. They offer BYO with no corkage charge.

Photo: Katie Rivers

Address: 58 Albert Street, Berry NSW 2535

Opening hours: Sunday-Thursday: 8am - 4:30pm (closed on Wednesdays during winter) Friday - Saturday: 8am - 4:30pm, reopening 6pm - 10pm

Phone: +61 2 4464 2283

Internet: <https://www.visitnsw.com/destinations/south-coast/jervis-bay-and-shoalhaven/berry/food-and-drink/figbird-cafe-and-deli>

Queen Street Eatery and Wine Bar



A new addition to the South Coast dining scene, Queen Street Eatery is a small and intimate venue for a special lunch, dinner or a casual breakfast with

family and friends.

The menu is inspired by the simple comforts of rustic French fare with a fresh Australian coastal interpretation and a fun wine list focussing on French and unique wine styles.

To avoid disappointment, bookings are recommended for lunch and dinner.

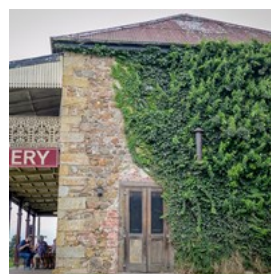
Photo: Queen St Eatery

Address: 1/65 Queen Street, Berry NSW 2535

Phone: +61 2 4464 2544

Internet: <https://www.visitnsw.com/destinations/south-coast/jervis-bay-and-shoalhaven/berry/food-and-drink/queen-street-eatery-and-wine-bar>

The Heritage Bakery



The Heritage Bakery—established in 2003 in the lovely little town of Milton, located in one of the oldest and most beautiful historical

buildings of the region.

Their aim is to be the best Bakery in Australia, by providing to their customers, exceptional customer service, quality products.

Their experienced and talented Bakers produce

their beautiful products on sight seven days a week. Their product range is second to none from their famous pies or pastries, from fresh sandwiches or bread, including or wonderful sourdough range, you will be sure to find something that will delight your taste buds.

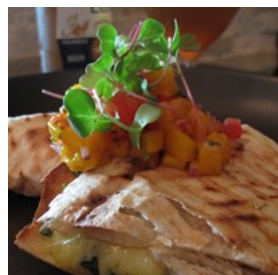
Photo: Shoalhaven City Council

Address: 197 Princes Highway, Milton NSW 2538

Phone: +61 2 4455 1013

Internet: <https://www.visitnsw.com/destinations/south-coast/jervis-bay-and-shoalhaven/milton/food-and-drink/the-heritage-bakery>

3Gringos



3Gringos specialises in Mexican and modern Australian cuisine. The menu features a selection of appetisers along with Mexican classics such as fajitas, burritos, enchiladas and tortillas served sizzling hot with spicy aromas. Gluten and dairy-free meal options are available upon request.

Photo: Murray Hill - 3gringos

Address: Shop 30-31, Burton Street Mall, Vincentia, NSW 2540

Phone: +61 2 4441 6651

Internet: <https://www.visitnsw.com/destinations/south-coast/jervis-bay-and-shoalhaven/vincentia/food-and-drink/3gringos-mexican-restaurant>

The Gunyah Restaurant at Paperbark Camp



The Gunyah Restaurant is built high off the ground to offer scenic treetop dining in the luxurious Paperbark Camp. The seasonal menu specialises in modern European cuisine with an emphasis on fresh local produce. Enjoy a long leisurely

breakfast including house made granola and cooked-to-order eggs, or enjoy sunset drinks and a candlelit dinner on the inviting verandah.

Photo: The Gunyah Restaurant at Paperbark Camp

Address: 571 Woollamia Road, Huskisson, NSW 2540

Phone: +61 2 4441 7299

Internet: www.visitnsw.com/destinations/south-coast/jervis-bay-and-shoalhaven/huskisson/restaurants/the-gunyah-restaurant-at-paper-bark-camp

EVENTS



Destination NSW for Jervis Bay

Jervis Bay is home to an exciting range of cultural and sporting events, with many towns hosting community festivals that showcase and celebrate local talent.

Kangaroo Valley Folk Festival



Kangaroo Valley Folk Festival - a three day celebration of music, poetry, dancing, art and craft in Australia's most beautiful valley. Enjoy

over 50 fabulous acts from around Australia and overseas in six intimate venues.

The fun starts 3pm Friday and continues all weekend until 5pm Sunday.

There are lots of hands-on activities too, such as dancing, poetry, tune sessions, instrument and singing workshops.

It's a family friendly event. Accompanied

children under 12 get in free and can enjoy the kids' craft and kids' performers.

Photo: Kangaroo Valley Folk Festival edit
Address: Kangaroo Valley Showground, 179 Moss Vale Road, Kangaroo Valley Showground Kangaroo Valley NSW 2577
Phone: +61 412 288 923
Internet: <https://www.visitnsw.com/destinations/south-coast/jervis-bay-and-shoalhaven/kangaroo-valley/events/kangaroo-valley-folk-festival>

Shoalhaven River Festival

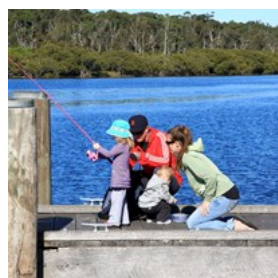


A fun family day out in October featuring a street parade, markets, musical entertainment and food stalls. Watch an exciting program of races on the

Sussex Inlet River including dragon boats, surf boats and stand-up paddleboards. A big fireworks display marks the end of the festival.

Photo: Shoalhaven River Festival
Address: Scenic Drive, Nowra, NSW 2541
Phone: +61 412 586 707
Internet: www.visitnsw.com/events/shoalhaven-river-festival

The Sussex Inlet Annual Family Fishing Carnival



This fishing carnival invites the whole family to participate in weigh and release competitions with more than \$A25,000 in cash and prizes to be

won. Held annually in July, competitors can choose to fish from the river bank, off the rocks, inside the basin or out in the ocean.

Photo: JK IMAGES SUSSEX INLET - JK IMAGES
Address: Jacobs Drive, Sussex inlet, NSW 2540
Phone: +61 2 4441 2017
Internet: <https://www.visitnsw.com/destinations/south-coast/jervis-bay-and-shoalhaven/sussex-inlet/events/the-sussex-inlet-annual-family-fishing-carnival>

Lions Club White Sands Festival



Enjoy a day of entertainment in April with more than 100 stalls and exhibits including hot rod and vintage cars, bikes, vintage machinery

and power boats. A grand parade kicks off celebrations with Scottish marching bands, floats and community groups. The festivities draw to a close in the evening with a fireworks display on the waters of Jervis Bay.

Photo: Narrell Brown - Jervis Bay Lions Club
Address: Kiola Street, Huskisson, NSW 2540
Phone: +61 2 4447 8066
Internet: www.visitnsw.com/events/jervis-bay-lions-club-white-sands-festival

SHOPPING



Destination NSW for Jervis Bay

Discover exquisite Aboriginal craftsmanship and artworks in Jervis Bay and find treasures in the region's many arts and crafts markets, and browse for beach fashions and local handmade jewellery in boutiques.

Marine Rescue Ulladulla Wharf Markets



The Ulladulla Harbour Markets are run by the volunteer members of the local unit of Marine Rescue NSW and have become an institution in

this pretty South Coast town.

Usually held on the second Sunday of each month, the craft, produce and speciality stalls attract visitors from near and far.

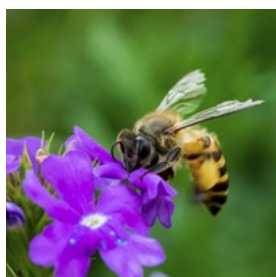
Photo: Ulladulla Harbour

Address: Ulladulla Wharf, Wason Street, Ulladulla NSW 2539

Phone: +61 2 4455 3403

Internet: <https://www.visitnsw.com/destinations/south-coast/jervis-bay-and-shoalhaven/ulladulla/events/marine-rescue-ulladulla-wharf-markets>

Clayridge Honey



Clayridge Honey supply locally produced pure, raw and unprocessed honey. They also make creamed honey, honey energy drinks, honey

popcorn and honey lollies. Honey is harvested straight from their own beehives ensuring fresh and high quality produce every time, and is chemical free. Their honey is cold extracted and is neither heat treated nor pasteurised.

Photo: Shoalhaven Tourism

Address: 79 The Wool Road Basin View NSW 2540

Phone: +61 2 4443 4198

Internet: <https://www.visitnsw.com/destinations/south-coast/jervis-bay-and-shoalhaven/st-georges-basin/food-and-drink/clayridge-honey>

Huskisson Gallery and Picture Framing



Visit the gallery to see displays from local artists and photographers. A local artisan creates handmade jewellery made exclusively for the

gallery. A large range of locally produced Aboriginal works from the Dharawal people are also available for purchase.

Photo: Shoalhaven Visitors Centre

Address: Shop 3 and 4, 70 Owen Street, Huskisson, NSW 2540

Phone: +61 2 4441 5399

Internet: <https://www.visitnsw.com/destinations/south-coast/jervis-bay-and-shoalhaven/huskisson/attractions/huskisson-gallery-and-picture-framing>

Huskisson Market



A treasure trove of arts and crafts, fresh produce, plants, bric-a-brac and more. The markets are held on the sporting

ground adjacent to the Huskisson Bowling Club on the second Sunday of each month.

Photo: Katie Rivers - Shoalhaven Tourism

Address: Huskisson Road, Huskisson, NSW 2540

Phone: +61 2 4441 8668

Internet: www.visitnsw.com/destinations/south-coast/jervis-bay-and-shoalhaven/huskisson/events/huskisson-market

Pyree Village Art & Handmade Market



Visit the Potters Workshop where this market is held on the fourth Sunday of every month except December, when it takes place on

the third Sunday. Stalls feature local produce,

arts, crafts, pottery, woodcraft, needlecraft, natural fibre baskets, plants, cakes, jams, clothing and much, much more. The market specialises in handmade articles and goods and not commercial produce.

Photo: Kerry Rourke

Address: Shoalhaven Potters Workshop, 888 Greenwell Point Road, Pyree, NSW 2540

Phone: +61 2 4443 7312

Internet: www.visitnsw.com/destinations/south-coast/jervis-bay-and-shoalhaven/culburra-beach/events/pyree-village-art-and-handmade-market

ACCOMMODATION



James Pipino/Destination NSW for Jervis Bay

From camping grounds to waterfront cottages, the beautiful Jervis Bay area enjoys accommodation options to suit a range of budgets and holiday experiences. Camp on the beach in national parks, stay in a luxury tent, or indulge in boutique B&Bs.

www.visitnsw.com/destinations/south-coast/jervis-bay-and-shoalhaven/jervis-bay/accommodation

Silos Estate



Silos Estate offers a truly unique holiday experience. Whether you have come to relax in a cottage overlooking vineyards, sampling

wines, viewing alpacas or to enjoy a meal – at Silos Estate you can do it all.

The estate is a working vineyard operating from buildings used in the original dairy farm established in 1870. The premises have now been fully restored and house award winning accommodation, cellar door and a restaurant. Their accommodation is nestled amongst sprawling vineyards and landscaped grounds providing a special place to stay for a weekend or longer. Be captivated by the magnificent views – rolling green hills, the Great Dividing Range escarpment and the vineyard.

Only minutes from historic Berry, National Parks, Jervis Bay, Kangaroo Valley, beaches, rainforest, and other wineries, Silos Estate is located just two hours south of Sydney and three hours east of Canberra on the popular South Coast of New South Wales.

It is truly the ideal destination to be welcomed home, be their guest.

Photo: Silos Estate

Address: 640 Princes Highway, Silos Estate Jaspers Brush NSW 2535

Phone: +61 2 4448 6082

Internet: <https://www.visitnsw.com/destinations/south-coast/jervis-bay-and-shoalhaven/berry/accommodation/silos-estate>

Berry Showground Camping



Berry is lucky to have one of the best showgrounds in New South Wales. With its superb well-maintained lawns, shady areas and many

historic buildings on site, it is a fantastic place for tent, trailer or caravan camping.

The on-site Caretaker and Booking Officer ensures a safe and hassle-free environment. There is a dump point, lots of modern power poles, and the excellent amenities are kept

locked so there is zero vandalism. Great clean hot showers with doors. Good lighting at night without being intrusive.

The grounds are open all year round for your enjoyment, except for two weeks before the great Berry Show on the first weekend of February. The grounds also offer stable hire for transport horses on their way to and from events all over Australia. The railway station is immediately behind the Showground and is well serviced. Some campers even catch the train up to Sydney for the day and leave their vehicle at the Showground.

Tent campers are very welcome too.

Photo: Berry Showground Camping

Address: 35 Alexandra Street, Berry NSW 2535

Phone: +61 427 605 200

Internet: <https://www.visitnsw.com/destinations/south-coast/jervis-bay-and-shoalhaven/berry/accommodation/berry-showground-camping>

White Sands Hyams Beach, Jervis Bay



White Sands Hyams Beach is a luxury accommodation with direct and private beach access onto the White Sands of Hyams Beach in

Jervis Bay, being about two hour 45 minute drive from Sydney.

The White Sands property has two separate private residencies: "The Beach House" and "The Boat House".

You may rent either property or both properties:

The Beach House sleeps maximum nine; The Boat House sleeps maximum seven and Both Houses together sleep maximum sixteen.

They have equipped both properties in White Sands with all the things you will need for a relaxing break. You will feel completely spoiled with the discerning touches found throughout

each house on the property, including amazing original art works and sculptures, luxurious bed linen and bespoke designer soft furnishings.

Photo: White Sands Photographer - White Sands Hyams Beach

Address: 82 Cyrus Street White, Sands Hyams Beach NSW 2540

Phone: +61 412 922 281

Internet: <https://www.visitnsw.com/destinations/south-coast/jervis-bay-and-shoalhaven/hyams-beach/accommodation/white-sands-hyams-beach-jervis-bay>

Burrill Lake Holiday Park



With absolute lake frontage, direct beach access and views across Burrill Lake to Pigeon House Mountain, the relaxed and friendly

Burrill Lake Holiday Park has the best of everything. Choose from a fully self-contained spa cabin with views or standard en suite cabins. Other facilities and accommodation options include waterfront powered sites, powered en suite sites, swimming pool, children's playground, canoe hire, camp kitchen and games room.

For shopping, restaurants, golf, bowling and other sport facilities, Ulladulla township is just a few kilometres away.

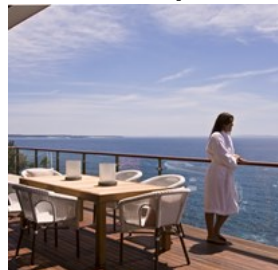
Photo: Burrill Lake Holiday Park

Address: 8 Princess Avenue, South Burrill Lake NSW 2539

Phone: +61 2 4444 8840

Internet: <https://www.visitnsw.com/destinations/south-coast/jervis-bay-and-shoalhaven/ulladulla/accommodation/holiday-haven-burrill-lake>

Bannisters By The Sea



Bannisters by the Sea is a unique boutique hotel with a wonderful cliff top location above beautiful Mollymook Beach on the NSW South Coast. This

coastal getaway offers luxury ocean view accommodation, Rick Stein at Bannisters fully licensed award winning restaurant, a wet edge pool with pizza and cocktail bar and a rejuvenating day spa.

Originally built in the 1960's as a seaside motel, a succession of upgrades and refurbishments now sees accommodation offering 4.5 star rooms with panoramic ocean views and private balconies.

Well known designer, Collette Dinnigan has remodelled and reimagined two of the stylish penthouses, capturing coastal elegance in a relaxed and super-comfortable environment. International chef, restaurateur and television presenter Rick Stein's restaurant Rick Stein at Bannisters offers superb fresh local seafood in an airy and light-filled coastal ambience.

Just a three hour drive from Sydney, or 2.5 hours from Canberra, Bannisters by the Sea makes an ideal destination for your next coastal getaway.

Photo: Bannisters By The Sea edit

Address: 191 Mitchell Parade, Mollymook NSW 2539

Phone: +61 2 4455 3044

Internet: <https://www.visitnsw.com/destinations/south-coast/jervis-bay-and-shoalhaven/mollymook/accommodation/bannisters-the-sea>

Gradys Riverside Retreat



Grady's Riverside Retreat is set on 17 acres amongst the peaceful bank of the Shoalhaven River surrounded by trees, shrubs, nature and

a beautiful clear sky above, clouded not by tall buildings. The Riverside Retreat is definitely one of those special places to escape to in the country with no burden of city life.

Grady's offers camping, fishing, cabins and night time fires in camp drums. Come and enjoy this amazing location with the best facilities without the hassle of busy bustling city style.

Photo: Gradys Riverside Retreat

Address: 674 Burrier Road, Burrier NSW 2540

Phone: +61 2 4421 3282

Internet: <https://www.visitnsw.com/destinations/south-coast/jervis-bay-and-shoalhaven/nowra/accommodation/gradys-riverside-retreat>

RTBU Holiday Park



Holiday accommodation within Booderee National Park (Ellmoos Road Jervis Bay). There are 14 self contained cabins which each sleep six. You must

supply own linen.

Facilities include an undercover barbecue area, tennis court and the property is readily accessible to the inlet and beach. Cabins contain queen size bed, two single beds and bunk beds in sleep out, fridge, cooking and eating utensils, oven, microwave, cooktop and television.

Owned and operated by the Rail Tram and Bus Union, discount rates apply for union members.

General public bookings welcome.

To book or check availability, please contact the RTBU head office on the number provided.

Photo: RTBU Holiday Park
Address: Ellmoos Road, Jervis Bay NSW 2540
Phone: +61 2 9264 2511
Internet: <https://www.visitnsw.com/destinations/south-coast/jervis-bay-and-shoalhaven/jervis-bay/accommodation/rtbu-holiday-park>

Holiday Haven Lake Conjola



Lake Conjola Entrance Holiday Park sits like a gem on the South Coast of New South Wales boasting direct access to magnificent Conjola

beach a southern boundary of unspoilt bushland and absolute frontage to sparkling Lake Conjola. Lake Conjola Entrance Holiday Park has an array of comfortable cabins and spacious tourist sites to choose from. The park also has a range of guest facilities and excellent amenities. If you like water sports you will be literally spoilt for choice! Enjoy fishing, boating, water skiing or even sailing. Perhaps just sitting and relaxing is more your speed? No problem, unwind on the banks of the beautiful lake Conjola or the perfect sands of Conjola beach.

Photo: Lake Conjola Entrance Holiday Park
Address: 1a Lake Conjola Entrance Road, Lake Conjola NSW 2539
Phone: +61 2 4444 8830
Internet: <https://www.visitnsw.com/destinations/south-coast/jervis-bay-and-shoalhaven/lake-conjola/accommodation/holiday-haven-lake-conjola>

Depot Beach cabins



Fall asleep to the sounds of rustling gum leaves and glimpses of crashing waves from the comfort of your own Depot Beach cabin in the picturesque

Murramarang National Park.

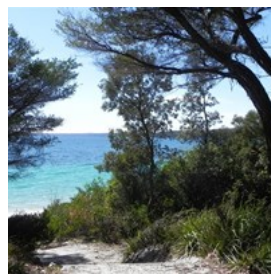
Situated right next to the idyllic and fully equipped campground, you can indulge in a leisurely swim at the nearby Depot Beach. And after waking in your beach front or forest cabin, whip-up a barbecue breakfast and share some tales with your fellow visitors.

For fishing enthusiasts, anglers will tell you to make your way to Kioloa; the boat ramp there makes it an easy way to get out to the ocean, or go fishing at the headland to catch blackfish and drummer.

There are many outdoor activities to do while you're at Depot Beach cabins, which makes this accommodation the perfect coastal getaway.

Photo: Melissa Findley - OEH
Address: Carr Street, Depot Beach, NSW 2536
Internet: <https://www.visitnsw.com/destinations/south-coast/jervis-bay-and-shoalhaven/bawley-point/accommodation/depot-beach-cabins>

Bristol Point Camping Area in Booderee National Park



The Bristol Point camping area is located in the beautiful Booderee National Park at Jervis Bay. Booderee offers a wide range of activities in

an enchanting natural setting, including swimming, fishing, snorkelling, bushwalking, cycling and boating. All sites are walk-in and are not suitable for caravans or camper trailers. Parking spaces for walk-in sites are nearby and no farther than 50 metres away from tents.

Photo: Elinor Jean - Parks Australia
Address: Jervis Bay Road, Jervis Bay, NSW 2540
Phone: +61 2 4443 0977
Internet: www.visitnsw.com/destinations/south-coast/jervis-bay-and-shoalhaven/jervis-bay/accommodation/booderee-national-park-bristol-point-camping-area
More Info: Campsites should be reserved in advance by calling or emailing booderee.mail@environment.gov.au

Cave Beach Camping Area in Booderee National Park



The Cave Beach camping area is set among coastal tea trees and is ideal for lightweight camping.

Cold showers, fresh water, toilets and wood

barbecues are available. The camping area is 300 metres from the car park and all equipment must be carried in.

Photo: Michael Nelson - Parks Australia

Address: Cave Beach Road, Jervis Bay, NSW 2540

Phone: +61 2 4443 0977

Internet: www.visitnsw.com/destinations/south-coast/jervis-bay-and-shoalhaven/jervis-bay/accommodation/booderee-national-park-cave-beach-camping-area

More Info: Campsites should be reserved in advance by calling or emailing booderee.mail@environment.gov.au

Green Patch Camping Area in Booderee National Park



The Green Patch camping area is just metres from the beach in the beautiful Booderee National Park.

The park is owned by the Wreck Bay Aboriginal

Community, which offers an Aboriginal cultural program. Sites at Green Patch are either drive-in or walk-in. Walk-in sites are not suitable for caravans or camper trailers. Parking spaces for walk-in sites are no farther than 50 metres from tents.

Photo: Parks Australia

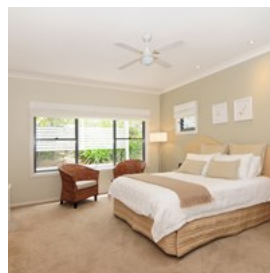
Address: Booderee National Park, Jervis Bay, NSW 2540

Phone: +61 2 4443 0977

Internet: www.visitnsw.com/destinations/south-coast/jervis-bay-and-shoalhaven/jervis-bay/accommodation/booderee-national-park-green-patch-camping-area

More Info: Campsites should be booked in advance by calling or emailing booderee.mail@environment.gov.au

CeeSpray on Owen



This luxury bed and breakfast is set in a quiet location and is just a 200-metre stroll from the centre of town and the shores of Jervis Bay.

Breakfast includes fresh juices, seasonal fruits and a range of locally baked breads.

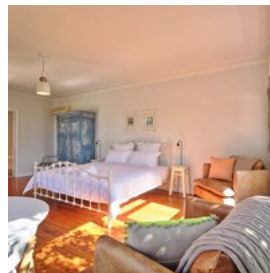
Photo: CeeSpray on Owen

Address: 30 Owen Street, Huskisson, NSW 2540

Phone: +61 2 4441 6430

Internet: <https://www.visitnsw.com/destinations/south-coast/jervis-bay-and-shoalhaven/huskisson/accommodation/ceespray-owen-bed-and-breakfast>

Dolphin Sands



Dolphin Sands is a tranquil luxury retreat for couples and only minutes away from the white sands of Jervis Bay at Huskisson. Sit on the front terrace or rear garden deck with a drink before heading out to one of the many excellent restaurants in the area within walking distance.

Photo: Dolphin Sands Bed and Breakfast

Address: 6 Tomerong Street, Jervis Bay, NSW 2540

Phone: +61 2 4441 5511

Internet: www.visitnsw.com/destinations/south-coast/jervis-bay-and-shoalhaven/jervis-bay/accommodation/dolphin-sands-bed-and-breakfast

Paperbark Camp



Luxury tented accommodation in a tranquil bush setting, Paperbark Camp lets you get back to nature in style and comfort.

Safari-style tents with solar powered lighting are

thoughtfully placed among the gum trees on elevated timber decks. Enjoy a meal in the on-site treetop dining room at The Gunyah Restaurant.

Photo: Corrie Bond

Address: 571 Woollamia Road, Huskisson, NSW 2540

Phone: +61 2 4441 6066 or 1300 668 167 (toll free within Australia)

Internet: <https://www.visitnsw.com/destinations/south-coast/jervis-bay-and-shoalhaven/huskisson/accommodation/paperbark-camp>

Sandholme Guesthouse



This Federation-style house features five themed bedrooms with en suites and various spacious lounge rooms to relax in. Full breakfast included and gourmet picnic hampers available to order for explorers.

Photo: Sandholme Guesthouse

Address: 2 Jervis Street, Huskisson, NSW 2540

Phone: +61 2 4441 8855

Internet: <https://www.visitnsw.com/destinations/south-coast/jervis-bay-and-shoalhaven/huskisson/accommodation/sandholme-guesthouse>

TOURIST INFORMATION



Dolphin Watch Cruises/Destination NSW for Jervis Bay

Jervis Bay is easy to reach from Sydney by driving or catching public transport.

Public transport



Transport NSW provides rail services from Sydney Central Station to Bomaderry in Nowra, a scenic three-hour train ride along the NSW South

Coast. The coach journey from Nowra to Jervis Bay with Nowra Coaches runs on Tuesday and Fridays and takes just over two hours. Check the Nowra Coaches website at www.nowracoaches.com.au for days and times of operation.

Jervis Bay Airport Express operates a daily door to door shuttle bus service connecting the NSW South Coast with major Sydney transportation, destinations and events. More info: www.jervisbayairportexpress.net

Photo: Pierre-Luc Auclair

Internet: www.transportnsw.info

Taxis



Culburra Taxi & Car Hire
• Cullburra Shops, Prince
Edward Avenue,
Cullburra • Phone: +61 2
4447 3123 Nowra Radio
Taxi Co-Operative • 62

North Street, Nowra

- Phone: 13 10 08

St Georges Basin & Jervis Bay Taxis

- Phone: +61 412 429 439

Sussex Inlet Taxi Service

- 2 Coral Court, Sussex Inlet
- Phone: +61 2 4441 1000

Photo: Arrival Guides

Medical



Callala Bay Pharmacy •
Shop 2, 55 Emmett
Street, Callala Bay •
Phone: +61 2 4446 4251
Hopes Pharmacy • 18
Burton Street,

Vincentia

- Phone: +61 2 4441 5777

Huskisson Pharmacy

- Shop 1, 56 Owen Street, Huskisson
- Phone: +61 2 4441 5104

Sanctuary Point Pharmacy

- 195 Kerry Street, Sanctuary Point
- Phone: +61 2 4443 0110

St Georges Basin Pharmacy

- Shop 4, 136 Island Point Road, St Georges
Basin
- Phone: +61 2 4443 5433

Photo: Gemma Garner

Telephone



Country Code: (+61) Area
Code: (02)

Photo: Jardson Almeida

Electricity



220-240 V

Photo: Stirling Tschan

Population

Approximately 3,500.

Currency

Australian Dollar (AUD) \$1 = 100 cents

Opening hours

General city shopping hours are Monday to Friday 9am – 5.30pm with late night shopping on Thursday until 9pm. Trading hours on Saturday are generally between 9am – 4pm, and on Sunday from 10am – 4pm.

Internet

www.visitnsw.com/destinations/south-coast/jervis-bay-and-shoalhaven

Newspapers

The Milton Ulladulla Times
Shoalhaven and Nowra News
South Coast Register
Sydney Morning Herald (NSW)
The Daily Telegraph (NSW)
The Australian (National)

Emergency numbers

Police, Ambulance, Fire 000

Tourist information

Jervis Bay Visitor Information Centre
Address: 11 Dent Street, Huskisson, NSW 2540
Phone: +61 2 4441 5999
Hours: Open daily 10am – 4pm. Closed Christmas Day.
Website: www.jervisbaytourism.asn.au