



London

Photo: Matt Gibson/Shutterstock.com



Engel Ching/Shutterstock.com

London is the cultural, political and economic heart of Britain, famous for its world-class museums, galleries, royal palaces, shopping destinations, West End theatre shows and award-winning restaurants. Whether you want to stay in a 5-star luxury hotel and sip Champagne on the London Eye, or find a cheap hostel and stroll around one of London's beautiful Royal Parks, you're sure to find something that suits your budget and interests.



S-F/Shutterstock.com

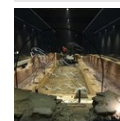


William Perugini/Shutterstock.com

QUIZ
*What Type of Traveller
Are You Based on
Your Travel IQ?*

TAKE THE QUIZ

Top 5



London Mithraeum
Reopened recently at the very site of its original discovery, the ruins of t...



Kew Gardens
London's largest UNESCO World Site, the Royal Botanic Gardens, Kew, is the l...



Glass blowing workshops
More and more crafts are becoming extinct or endangered over time. And there...



Tate Modern
Housed in a large former power station, Tate Modern is Britain's leading art...



The British Museum
One of the largest and most interesting museums in the world, the British Mu...



THE CITY



ESB Professional/Shutterstock.com

London is a world-class city and the heart of British politics, culture and commerce. Its history stretches back thousands of years, and remnants of this fascinating past can still be found across the capital - from the Tower of London, a gruesome site of Medieval torture, to the majestic Buckingham Palace.

A captivating mix of old and new, London is also renowned for its creativity, innovation and originality in art, theatre, music, design and cuisine. It is home to countless art galleries and museums, including the Tate Modern, National Gallery and British Museum, which possesses some of the world's finest treasures. And best of all, entry to most of these museums and galleries is free!

To catch all the 'big-hitters' in one go, you can't beat a walk along the River Thames. Strolling from Tower Bridge to the Houses of Parliament you'll pass the Tower of London, Shakespeare's Globe, Tate Modern, the Southbank Centre, the National Theatre, the London Eye, the SEA LIFE London Aquarium and London Dungeon. In addition to these world-famous attractions, there are many more to discover during your stay.

The West End is the place to go to see London's top theatre shows and musicals. Alongside

classics including *Les Misérables*, *Phantom of the Opera* and *The Woman in Black*, you will find hit contemporary shows, such as *Billy Elliot*, *The Lion King* and *Thriller - Live*. Don't forget to explore the many off-West End venues too, such as the National Theatre, The Old Vic and (during the summer months) Regent's Park Open Air Theatre.

In the West End you will also find some of London's top shopping destinations, from Oxford Street to Seven Dials. Different neighbourhoods are known for other unique opportunities for shopping: Notting Hill is renowned for its antiques and Portobello Market, Greenwich has an excellent arts and crafts markets, while Westfield London City and Westfield Stratford are the city's most famous malls.

If you would rather save money than spend it, the eight Royal Parks are well worth a visit - and a great spot for a picnic. Visit Greenwich Park to drop in on the Royal Observatory, walk through Kensington Gardens to see Kensington Palace, take a paddle on the Hyde Park boating lake, see Buckingham Palace from scenic St James's Park, spot deer at Richmond Park and Bushy Park, and meet the animals at London Zoo, which lies within Regent's Park.

Along the way indulge your taste buds with delicious food at one of London's many restaurants, gastropubs and pop-up eateries. You can eat food prepared by a celebrity chef, discover modern British cuisine, or eat food from anywhere in the world - be it Indian, Chinese, Persian, Greek, Italian or Lebanese. Top off your perfect day with a fancy cocktail, excellent wine or locally brewed beer at a top London pub or bar - and maybe a boogie at one of the capital's buzzing nightspots and clubs.

EVENTS NOT TO BE MISSED



DisobeyArt/Shutterstock.com

London offers a jam-packed calendar of events that cater to a wide range of audiences all year round. This guide highlights the most popular and interesting ones that should definitely be on your bucket list.

Christmas Markets in London



They say you can start to feel Christmas coming as early as October in the UK. But to feel the true spirit of Christmas in London head to one or more of these very festive destinations throughout the capital and thank us later. You don't want to miss the cosy Christmas markets peppered around the city centre. Be it at Leicester Square, the Southbank Centre or London Bridge City, why not warm yourself up with a mug of mulled wine by the river while you browse the stalls and take in the festive atmosphere.

Photo: Nattaphun.Tee / Shutterstock.com

Address: Leicester Square, South Bank & London Bridge
Public Transport: Leicester Square, South Bank, London Bridge

Opening hours: December - see website for times and dates

Tickets: Free entry

Internet: www.timeout.com/london/things-to-do/london-events-in-december

The Changing of the Guard at Buckingham Palace



The Changing of the Guard or Guard Mounting is an exchange of guard duties at Buckingham Palace. Watch the ceremony as each set of guards dressed in traditional red tunics and bearskin hats takes over from their brothers in arms. You can also watch a similar procedure at Horse Guards Arch on Horse Guards Parade.

Photo: Iacopo Guidi/Shutterstock.com

Address: Buckingham Palace, London

Public Transport: Green Park Tube station

Tickets: Free to enter

Internet: www.changing-guard.com

More Info: See the website for more information on times and dates

British Summer Time Music Festival



The Barclaycard British Summer Time music festival takes place every year in Hyde Park. The week-long event covers many musical tastes, from pop to rock to dance and hip hop. Find out more on their website.

Photo: Monkey Business Images/Shutterstock.com

Address: Hyde Park, London

Public Transport: Marble Arch, Hyde Park Corner, or Green Park Tube stations

Internet: www.bst-hydepark.com

Email: customer@bst-hydepark.com

RHS Chelsea Flower Show



The world's greatest flower show takes place in West London over a four-day period in May. Each year is different from the last but the vibrant small gardens and horticultural displays bring a splash of colour and scent to London's events calendar. Booking in advance is advisable.

Photo: GERARD BOTTINO/Shutterstock.com

Address: Royal Hospital Chelsea, Royal Hospital Road, Chelsea, London

Public Transport: Sloane Square Tube station

Opening hours: May

Internet:

www.rhs.org.uk/shows-events/rhs-chelsea-flower-show

Email: showscustomer@rhs.org.uk

Trooping the Colour



To celebrate The Queen's official birthday in June each year, the tradition of Trooping the Colour takes place on Horse Guards Parade and The Mall near

Buckingham Palace. The ceremony of military pomp and pageantry includes a flypast by the Royal Air Force and a procession led by Her Majesty.

Photo: Markus Gann/Shutterstock.com

Address: Horse Guards Parade, Whitehall, London

Public Transport: Charing Cross, Embankment or Westminster Tube stations

Internet: www.householddivision.org.uk/trooping-the-colour

Email: info@householddivision.org.uk

More Info: See the website for more information

Notting Hill Carnival



Europe's biggest street festival takes place every August Bank Holiday weekend in West London. The huge Caribbean-themed party takes place over a period of three days with the main parade held on the Monday. Expect colourful floats, dressed up performers and lots of music.

Photo: jeff gynane/Shutterstock.com

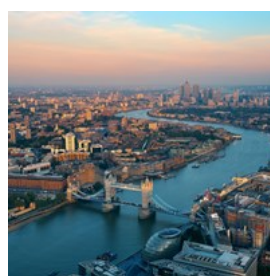
Address: Notting Hill area, West London

Tickets: Free entry

Internet: www.thelondonnottinghillcarnival.com

Email: info@lnhcet.com

Totally Thames Festival



The whole month of September is dedicated to celebrating London's famous river. The Totally Thames Festival takes place over a period of 30 days. With more than 100 different artistic and cultural events, the festival takes over the city spreading out for miles. In 2014 there were guided walks, tours and tall ships regattas, as well as theatre, cinema and many other exciting ways to enjoy London. All of these events take place either on or by the river Thames.

Photo: Songquan Deng/Shutterstock.com

Address: Various locations along the river

Opening hours: Throughout September

Phone: +44 20 7928 8998

Internet: totallythames.org

Email: marketing@thamesfestival.org

DO & SEE

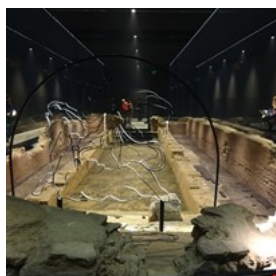


ESB Professional/Shutterstock.com

London is full of things to do and see. From famous attractions such as the London Eye, Houses of Parliament, Big Ben and Tower of London to much lesser known ones that are almost secrets. There are also exciting shopping destinations, vast areas of green parkland in the middle of the city and much, much more.

Read on for inspiration and handy tips on places you just can't miss while you're in the capital. Many attractions on this list are free to enter, giving you another great reason to fall in love with London.

London Mithraeum



Reopened recently at the very site of its original discovery, the ruins of this Roman Temple of Mithras are open for public visits in the basement of Bloomberg's European headquarters at number 12 Walbrook. There are also a few other exhibitions that include both historic artefacts and contemporary artwork. Entrance is free of charge.

Photo: David Holt/Flickr (image cropped)
Address: 12 Walbrook, London

Opening hours: Tue - Sat 10.00 - 18.00, Sun 12.00 - 17.00
First Thursday of the month 10.00 - 20.00
Phone: +44 20 7330 7500
Internet: www.londonmithraeum.com
Email: info@londonmithraeum.com
More Info: Booking a spot in advance is recommended - Admission is free

Kew Gardens



London's largest UNESCO World Site, the Royal Botanic Gardens, Kew, is the largest conservation project of its kind in the world. Visit the Davies Alpine House and experience the high-altitude conditions that allow alpine plants to grow, take a trip the desert to the jungle at Princess of Wales Conservatory, marvel at treacherous carnivorous plants and take in sweeping views of London from atop the Great Pagoda.

Photo: Kiev.Victor/Shutterstock.com
Address: Richmond TW9 3AB
Phone: +44 20 8332 5655
Internet: www.kew.org/kew-gardens

Glass blowing workshops



More and more crafts are becoming extinct or endangered over time. And therefore it is important to preserve the ones left today. Luckily there are masters in the art of glass blowing and if you are interested to learn about the it, you can participate in one of the several glass blowing workshops in and around London. You can find half-day or full-day courses, all equally entertaining and educational at the same time.

Photo: jurra8/Shutterstock.com

Internet: www.craftcourses.com/categories/glass/glass-blowing?location=London&search=yes&distance=100&sort=rating

Tate Modern



Housed in a large former power station, Tate Modern is Britain's leading art gallery when it comes to modern and contemporary art. As well as the Tate's much anticipated exhibitions, there's a fantastic permanent collection to explore. It features works by artists as diverse as Matisse, Picasso, Rothko, Pollock, Warhol and Bourgeois.

Photo: Bikeworldtravel/Shutterstock.com

Address: Bankside, London

Public Transport: Southwark and Blackfriars Tube stations

Opening hours: Daily 10.00-18.00. Fri and Sat 10.00-22.00

Phone: +44 20 7887 8888

Tickets: Free (some temporary exhibitions are ticketed)

Internet: www.tate.org.uk

Email: visiting.modern@tate.org.uk

The British Museum



One of the largest and most interesting museums in the world, the British Museum is home to some of the most treasured historical artefacts ever found. The extensive exhibition includes the Rosetta Stone, Assyrian treasures, Egyptian mummies and the museum's spectacularly illuminated Great Court, where you can find the museum's new restaurant. This restaurant is an ideal spot for taking afternoon tea under the court's spectacular roof. Free tours of the museum and guides are also available.

Photo: jenny/Shutterstock.com

Address: Great Russell Street, London

Public Transport: Holborn, Tottenham Court Road, Russell Square, and Goodge Street Tube stations

Opening hours: Daily 10.00-17.30. Friday 10.00-20.30

Phone: +44 20 7323 8000

Tickets: Free (some temporary exhibitions are ticketed)

Internet: www.britishmuseum.org

Email: info@britishmuseum.org

The National Gallery



You will find vast collections of some of the most famous, beautiful and awe-inspiring paintings in the world at the National Gallery.

Treat yourself to some of the best artistic production there is and ever has been. Feast your eyes on masterpieces by Leonardo da Vinci, Michelangelo, Titian, Rembrandt, Vermeer, Turner, Monet or Van Gogh.

Photo: Cedric Weber/Shutterstock.com

Address: Trafalgar Square

Public Transport: Charing Cross Tube Station

Opening hours: Daily 10.00-18.00. Friday 10.00-21.00

Phone: +44 20 7747 2885

Internet: www.nationalgallery.org.uk

Email: information@ng-london.org.uk

Tower of London



Tower of London is one of the most famous fortified buildings in the world. It's also a mysterious place full of dark secrets, strange stories and historic relics. Here you can admire the priceless Crown Jewels, explore the Medieval Palace, visit the infamous Bloody Tower, and go on a tour with a Yeoman Warder to learn about the many executions that took place here.

Photo: Justin Black/Shutterstock.com

Address: Tower Hill, London
Public Transport: Tower Hill Tube station
Opening hours: Tue-Sat 09.00-17.30. Sun-Mon 10.00-17.30
Phone: +44 20 3166 6000
Internet: www.hrp.org.uk/tower-of-london

St Paul's Cathedral

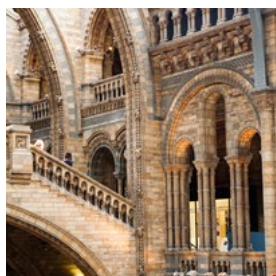


The 17th century cathedral on Ludgate Hill in the City of London is one of the capital's most iconic buildings.

Designed by the illustrious Sir Christopher Wren, St Paul's was the tallest building in London until as late as 1962. Use the touch-screen multimedia guides or take a guided tour to learn about the famous interior or, if you're feeling fit, climb up to the Whispering Gallery and try out the acoustics. From there you can carry on making your way up to the Golden Gallery atop the dome, where you'll be rewarded with breathtaking views of London. You can also descend into the crypt where you'll find memorials of important historical figures such as Admiral Lord Nelson.

Photo: Victor Moussa/Shutterstock.com
Address: St Paul's Churchyard, London
Public Transport: St Paul's, Mansion House and Blackfriars Tube stations
Phone: +44 20 7246 8350
Internet: www.stpauls.co.uk
Email: reception@stpaulscathedral.org.uk

Natural History Museum



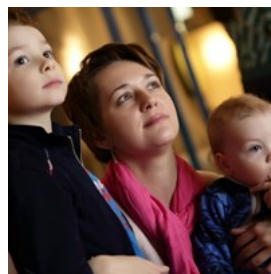
The Natural History Museum houses hundreds of amazing exhibits from the natural world in one of London's most beautiful landmark

buildings. Highlights include the popular Dinosaurs gallery, the model blue whale and the

Cocoon specimen centre special. Events and debates are held in the Darwin Centre high-tech Attenborough Studio, where you'll have the chance to meet important scientists.

Photo: ileana_bt/Shutterstock.com
Address: Cromwell Road, London
Public Transport: South Kensington and Gloucester Road Tube stations
Opening hours: Daily 10.00-17.50
Phone: +44 20 7942 5000
Tickets: Free (some exhibitions have separate charges)
Internet: www.nhm.ac.uk

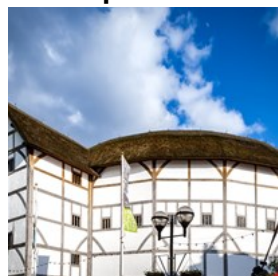
Madame Tussauds London



There's plenty to keep you entertained at Madame Tussauds London, with more than 300 wax figures, the Marvel Super Heroes 4D movie experience and Spirit of London Taxi Ride. The uncannily lifelike wax figures of famous (and infamous) individuals from throughout history are the obvious highlight. From Johnny Depp and One Direction to Muhammad Ali and the Queen, you are sure to recognise everyone who makes an appearance. Who is your favourite celebrity?

Photo: Chubykin Arkady/Shutterstock.com
Address: Marylebone Road, London
Public Transport: Baker Street Tube station
Phone: +44 871 894 3000
Internet: www.madametussauds.com/london/en
Email: guest.experience@madame-tussauds.com

Shakespeare's Globe Theatre



Shakespeare's Globe Theatre is a reconstruction of the original open-air theatre where playwright, William Shakespeare, first staged many of his famous plays such as *Romeo and Juliet*, *Hamlet*, and *Midsummer Night's Dream*.

On the banks of the Thames, just a few hundred yards away from its original location, the Globe stages classic and modern interpretations of Shakespeare's works as well as of brand new plays. And at only £5 for a standing ticket, you can't go wrong. There is also an exhibition with audio guides available in English, French, German, Spanish, Italian, and Japanese. And expert guided tours run every 30 minutes.

Photo: Victor Moussa/Shutterstock.com

Address: 21 New Globe Walk, Bankside, London

Public Transport: Blackfriars, London Bridge and Mansion House Tube stations

Opening hours: Daily 09.00-17.00

Phone: +44 20 7902 1400

Internet: www.shakespearesglobe.com

Email: info@shakespearesglobe.com

SEA LIFE London Aquarium



Located on the South Bank, right next to London Eye, SEA LIFE London Aquarium harbours one of Europe's largest collections of global marine life covering more than 500 species, 14 themed areas and two million litres of water. The exhibition includes favourites such as seahorses, octopus, zebra sharks and clown fish. There are also interactive experiences, so you can see diving displays, watch the sharks

being fed, or even try and feed the stingrays yourself. And don't forget to take a dive 'under the ocean' in the glass tunnel walkway.

Photo: NadyaEugene/Shutterstock.com

Address: County Hall, Westminster Bridge Road, London

Public Transport: Waterloo and Westminster Tube stations

Opening hours: Mon-Fri 10.00-18.00. Sat-Sun 09.30-19.00

Phone: +44 871 663 1678

Internet: www.visitsealife.com/london

Email: slondon@merlinentertainments.biz

Houses of Parliament



Take a tour of the Houses of Parliament and experience 1,000 years of history at Westminster. Visitors are welcomed into the building through Westminster Hall, before following in the footsteps of the Queen at the State Opening of Parliament. Marvel at the Victorian splendour of the Lords Chamber and see the famous green benches in the Commons Chamber. Audioguides and tours are available in English, French, German, Italian, Spanish, Russian and Mandarin.

Photo: Richie Chan/Shutterstock.com

Address: Westminster, London

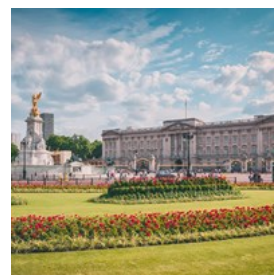
Public Transport: Westminster Tube station

Opening hours: Saturdays and weekdays when Parliament is not in session

Phone: +44 20 7219 3000

Internet: www.parliament.uk/visiting

Buckingham Palace

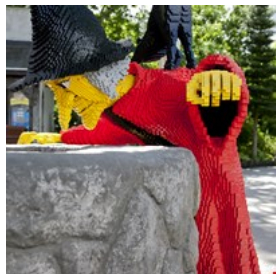


During the summer months, Buckingham Palace - the official residence of The Queen - opens the doors of its elegant State Rooms to the public. As well as proving a very fancy backdrop for many an official royal engagement,

the rooms contain some of the finest treasures from the Royal Collection - including paintings, sculptures and fine French furniture.

Photo: Philipp Dase/Shutterstock.com
Address: Buckingham Palace, London
Public Transport: Victoria, Green Park and Hyde Park Corner Tube stations
Opening hours: July-September
Phone: +44 20 7766 7300
Internet: www.royalcollection.org.uk
More Info: Prebooking tickets recommended

Legoland Windsor



Built on 150 acres of parkland, the LEGOLAND Windsor Resort is located just outside of London. It is home to more than 55 rides, shows, attractions and workshops, all geared towards children up to 12 years of age. This theme park is a great place for a family day trip. But for those of you who would like to make the most of all the fun there is to be had at the theme park, there is the possibility of staying at the Resort Hotel's themed rooms for a few days and enjoying its themed rooms. That way you can fully enjoy all that the park has to offer. You can jump on board a Lego submarine, take a good look at London's iconic landscape in miniature form, get soaked at the water rides and put your skills to the test at The Driving School.

Photo: Fulcanelli/Shutterstock.com
Address: Winkfield Road, Windsor, Berkshire
Public Transport: Take a train from London Paddington to Windsor & Eton Central via Slough, or from Waterloo to Windsor & Eton Riverside direct. A shuttle bus service operates from both stations to the park.
Phone: +44 871 2222 001
Internet: www.legoland.co.uk
Email: customer.services@legoland.co.uk

Hampton Court Palace



Hampton Court Palace was King Henry VIII's favourite royal residence. It is brimming with thrilling stories and beautiful sights. Inside the building you can visit the medieval Great Hall where William Shakespeare's company once performed, as well as the huge Tudor kitchens and the Haunted Gallery. There is also much to see on the outside of the palace, what with the puzzling maze, the palace's beautiful gardens and a large park. Other highlights include daily tours and talks, as well as the annual Hampton Court Palace Flower Show.

Photo: Gail Johnson/Shutterstock.com
Address: East Molesey, Surrey
Public Transport: Hampton Court train station is just across the bridge.
Opening hours: Daily 10.00-16.30
Phone: +44 844 482 7777
Internet: www.hrp.org.uk/hampton-court-palace
Email: hamptoncourt@hrp.org.uk

National Portrait Gallery



The National Portrait Gallery in Central London harbours more than 195,000 portraits of famous men and women who have shaped British history from 16th century to the present day. Painted by acclaimed artists such as Holbein, David Hockney, Cecil Beaton and Lucian Freud, sitters include kings, queens, film stars, politicians, musicians and many more. The gallery's rolling calendar of exhibitions is worth investigating as well, particularly the annual BP Portrait Awards.

Photo: Ham/Wikimedia Commons (image cropped)

Address: St Martin's Place, London
Public Transport: Charing Cross, Leicester Square and Embankment Tube stations
Opening hours: Daily 10.00-18.00, Thu and Fri 10.00-21.00
Phone: +44 207 306 0055
Tickets: Free (some exhibitions have separate charges)
Internet: www.npg.org.uk

Warner Bros. Studio Tour London – The Making of Harry Potter



Step into the magical world of Harry Potter and visit the film sets where the movies were shot in Warner Bros. Studio Tour London - The Making of

Harry Potter. On the tour you can nose around Dumbledore's office, enter the Great Hall, walk down Diagon Alley, see how they made Harry Potter fly on his broomstick and watch special effect animatronics come to life. A must-do for fans of the world's favourite wizard.

Photo: IR Stone/Shutterstock.com
Address: Studio Tour Drive, Leavesden
Phone: +44 345 084 0900
Internet: www.wbstudiotour.co.uk

Museum of London



Discover the story of the world's greatest city at The Museum of London.

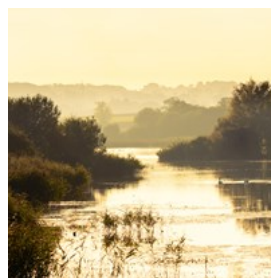
The tale begins with prehistoric London, moving on to the

influence of the Romans and Saxons on the city, and then on towards Medieval London. Along the way you will encounter civil wars, deathly plagues and rampant fires. Journey through the Galleries of Modern London along Victorian streets and marvel at the lavish Lord Mayor's Coach display.

Photo: [steveestvanik/Shutterstock.com](http://steveestvanik.com)

Address: 150 London Wall, City of London
Public Transport: Barbican, St Paul's and Moorgate Tube stations
Opening hours: Daily 10.00-18.00
Phone: +44 20 7001 9844
Tickets: Free entry
Internet: www.museumoflondon.org.uk
Email: info@museumoflondon.org.uk

WWT London Wetland Centre



The 105-acre WWT London Wetland Centre is a wildlife reserve on the outskirts of Central London. Here you will find plenty of rare birds,

beautiful lakes, tranquil gardens and calming meadows to walk amongst and admire. Keep your eyes open because you might be lucky enough to spot a family of otters. You can also take a free guided tour before relaxing at the Water's Edge Café. There are indoor and outdoor adventure areas for kids to play in.

Photo: IanRedding/Shutterstock.com
Address: Queen Elizabeth's Walk, Barnes, London
Opening hours: Winter 09.30-16.30. Summer 09.30-17.30
Phone: +44 20 8409 4400
Internet: www.wwt.org.uk/wetland-centres/london
Email: info.london@wwt.org.uk

The Sherlock Holmes Museum



The official home of the famous fictional detective Sherlock Holmes is 221b Baker Street. According to the books by Sir Arthur Conan Doyle, he lived

here from 1881 to 1904. The museum features Holmes' detailed study, life-size waxworks representing scenes from Holmes and Watson's adventures and a souvenir shop.

Photo: [AVN Photo Lab/Shutterstock.com](http://AVNPhotoLab.com)

Address: 221b Baker Street, London
Public Transport: Baker Street Tube station
Opening hours: Daily 09.30-18.00
Phone: +44 207 224 3688
Internet: www.sherlock-holmes.co.uk
Email: curator@sherlock-holmes.co.uk

City Cruises

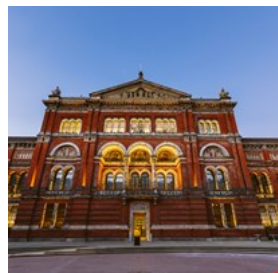


See London from a different angle by taking a cruise along the famous River Thames. City Cruises offer frequent sightseeing trips between

Westminster, Waterloo (next to the London Eye), Tower and Greenwich piers. Options include tea-time cruises, evening cruises, a jazz cruise and The London Showboat, a dinner/cabaret/dance cruise.

Photo: Jorge Felix Costa/Shutterstock.com
Address: Victoria Embankment, Westminster, London
Phone: +44 20 7740 0400
Internet: www.citycruises.com
Email: info@citycruises.com

The Victoria and Albert Museum



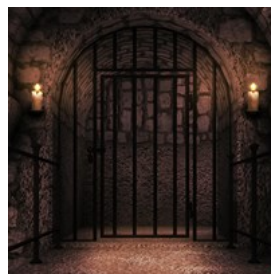
The Victoria and Albert Museum in Kensington has a breathtaking collection of design and art. From Islamic art to fine European jewellery.

From famous watercolours by artists such as John Constable to iconic fashion creations by Vivienne Westwood. Explore the permanent collection or visit one of the museum's world-class, and ever-popular temporary exhibitions. Look out for the quirky Friday Lates events that happen on the last Friday of every month.

Photo: Martin Hesko/Shutterstock.com

Address: Cromwell Road, London
Public Transport: South Kensington Tube station
Opening hours: Daily 10.00-17.45. Fri 10.00-22.00
Phone: +44 20 7942 2000
Tickets: Free (some exhibitions have a separate charge)
Internet: www.vam.ac.uk
Email: contact@vam.ac.uk

The London Dungeon



London's history is filled with gruesome tales and scary characters. The London Dungeon attraction on the south bank of the Thames

retells some of those bloody stories. Using costumes, 360° sets and a multitude of special effects, London Dungeon takes you through 1000 years of the city's gory, gruesome and terrifying past in 90 minutes. Look out for Jack the Ripper and Sweeney Todd along the way. This is not an attraction for those of nervous disposition.

Photo: BackgroundStore/Shutterstock.com
Address: County Hall, Riverside Building, London
Public Transport: Waterloo and Westminster Tube stations
Opening hours: Daily 10.00-17.00. Thu 11.00-17.00. Sat 10.00-18.00
Phone: +44 20 7654 0809
Internet: www.thedungeons.com/london/en
Email: london.dungeon@merlinentertainments.biz

The London Eye



At a staggering height of 135 metres (443 ft), The London Eye offers a superb view of the capital's most famous attractions. A full rotation

around the observational wheel in one of the glass capsules lasts some 30 minutes and it is so popular that each year it receives more visitors than the Taj Mahal and the Great Pyramids of Giza. And once you've taken a 360-degree ride

on the wheel you'll understand why.

Photo: View Apart/Shutterstock.com

Address: Riverside Building, County Hall, Westminster
Bridge Road, London

Public Transport: Westminster and Waterloo Tube stations

Phone: +44 870 990 8883

Internet: www.londoneye.com

RESTAURANTS



DisobeyArt/Shutterstock.com

There's an exciting buzz on the British culinary scene in London, with innovative chefs rethinking traditional British classics and creating new favourites - all with an emphasis on fresh, local produce.

Thanks to London's rich mix of cultures, the capital's restaurants serve up delicious food from all corners of the globe. Whatever cuisine you fancy, you're sure to find it in London - be it Chinese, Japanese, Korean, Caribbean, Polish, French, Italian, Afghan, Ethiopian, American, Spanish, South African, Persian... the list goes on.

Plus with Michelin-starred restaurants, family-friendly eateries, cosy gastropubs, fast food joints and quirky cafes dotted all over the city, there's something for every budget too. Food halls and street food are on the rise, too, with new ones popping up seemingly every month.

Arcade Food Theatre



Arcade Food Theatre is an artistic take on the familiar food hall, where particular emphasis is placed the preformative and entertainment

aspects of the dining experience. It's not just the open restaurant kitchens that put on the show: the space exhibits decommissioned installations by internationally acclaimed talent, a collection that keeps growing, plus hosts popular DJs who spin tunes until late.

Guests are treated to culinary offerings from talents behind some of London's top restaurants, which currently include Pophams, Casita Do Frango, Chotto by Chotto Matte, Flat Iron Workshop, Lina Stores, Le Bab, Pastorcito and TŌU. There are three bars on site - upstairs, The Loft crafts cocktails tailored to the tastes of each individual guest.

Photo: bezikus/Shutterstock.com

Address: 103-105 New Oxford St, London

Internet: www.arcade-london.com

Bang Bang Oriental Food Hall



Quite possibly the only place of its kind in Europe, Bang Bang Oriental Food Hall is a massive food court with spacious seating worth

making the trip to Colindale. The top floor hosts a couple dozen restaurants representing cuisines from all across the Asian continent, with a 360-seater Chinese restaurant occupying its ground level.

Photo: Artem Beliaikin/Shutterstock.com

Address: 399 Edgware Rd, London

Phone: +44 20 8205 9098
Internet: www.bangbangoriental.com

M.Manze / The Jellied Eel Bar



This bit of Cockney heritage dates back to 1902 and serves an all-time classic menu of pie, mash and jellied eel. Arrive Mon-Sat before

2pm to get your serve.

The shop now shares its moody art deco space with a beloved cocktail bar called The Jellied Eel, which is in operation Friday & Saturday nights, 7pm-2am. Expect great cocktails (and mocktails), a menu of small Mediterranean-inspired plates, and guest DJs.

Photo: M Rose/Shutterstock.com
Address: 87 Tower Bridge Rd, Bermondsey, London
Opening hours: Mon-Thu 10:30am-5:45pm, Fri 10am-6:45pm, Sat 10am-7:45pm, Sun 11am-2:45pm
Phone: +44 20 7407 2985

Kanada-Ya



Arguably London's best ramen chain now has three locations across town. They specialise in tonkotsu (pork broth) ramen; some bowls

feature chicken bone broth or a combination of the two. All locations except the original one in Covent Garden serve a vegetarian option.

Photo: Artit Wongpradu/Shutterstock.com
Address: 3 Pantan St, London
Opening hours: Mon-Sun 12pm-3pm / 4pm-10pm
Phone: +44 20 7930 3511
Internet: www.kanada-ya.com
More Info: Find there other locations at 35 Upper Street and 64 St Giles High Street

Hide



Distinguished with a Michelin star only 5 months after its opening, Hide is the result of an ambitious collaboration between acclaimed chef

Ollie Dabbous and Hedonism Wines. The ground-level restaurant features great value lunches (prices aren't low, but adequate for the level), while the fine dining affair "Above" has made a splash with its refined dishes and extravagant presentation.

Interiors draw clear inspiration from Green Park across the road.

Photo: Vershinin89/Shutterstock.com
Address: 85 Piccadilly, Mayfair, London
Phone: +44 20 3146 8666
Internet: www.hide.co.uk

J Sheekey



Tucked away between Leicester Square and Covent Garden, J Sheekey has been in business since the 1890s and is the place to go for

sustainably sourced fish, oysters and shellfish. From Sheekey's Fish Pie to potted shrimps (plus vegetarian and meat options), there's plenty of selection for everyone.

Photo: Cesarz/Shutterstock.com
Address: 28-34 St. Martin's Court, London
Public Transport: Leicester Square Tube station
Opening hours: Mon-Sat noon-11pm, Sun noon-6pm
Phone: +44 20 7240 2565
Internet: www.j-sheekey.co.uk

Inamo



Inamo is a pioneering Oriental fusion restaurant and bar where the control of the dining experience is placed firmly in your own hands, thanks to an interactive ordering system. Instead of reading a long list of dish names, you simply pick your favourite from an illustrated food and drinks menu projected onto your table surface. The pan-Asian menu includes influences from Japan, China, Thailand, Korea and beyond.

Photo: Sébastien Bertrand/Flickr (image cropped)
Address: 134-136 Wardour Street, Soho, London
Public Transport: Tottenham Court Road and Oxford Circus Tube stations
Phone: +44 20 7851 7051
Internet: www.inamo-restaurant.com
Email: reservations@inamo-restaurant.com
More Info: Check out their second location in Covent Garden

The Wolseley



Housed in a former car showroom on Piccadilly, The Wolseley is an elegant café-restaurant inspired by the grand European style of years gone by. The food follows the same classic European thread, with favourite dishes including veal Holstein and chicken soup with dumplings. Pop in for breakfast, lunch, afternoon tea, dinner... Any meal you fancy.

Photo: Chef photography/Shutterstock.com
Address: 160 Piccadilly, London
Public Transport: Green Park and Piccadilly Circus Tube stations
Opening hours: Mon-Fri 7am-11pm, Sat 8am-11pm, Sun 8am-10pm
Phone: +44 20 7499 6996
Internet: www.thewolseley.com

Email: info@thewolseley.com

Restaurant Gordon Ramsay



If the name alone doesn't sell it, the three Michelin stars that Restaurant Gordon Ramsay was honoured with should. Located in affluent Chelsea, the restaurant serves up modern French food from carefully picked ingredients in an elegant, intimate atmosphere. Wear something smart to feel right at home.

Photo: vichie81/Shutterstock.com
Address: 68 Royal Hospital Road, London
Public Transport: South Kensington and Sloane Square Tube stations
Opening hours: Tue-Sat noon-2:15pm / 6pm-9:15pm
Phone: +44 20 7352 4441
Internet: www.gordonramsayrestaurants.com/restaurant-gordon-ramsay
Email: royalhospitalroad@gordonramsay.com

Wild Heart



Located on the ground floor of the stylish Sanctum Soho Hotel, Wild Heart serves modern, seasonal British cuisine from breakfast through afternoon tea to dinner. A bar as well as a restaurant, it's also a good spot for a coffee, evening cocktail or glass of wine on their covered roof terrace.

Photo: Shebeko/Shutterstock.com
Address: 20 Warwick Street, Soho, London
Public Transport: Oxford Circus and Piccadilly Circus Tube stations
Opening hours: Mon-Wed 7.00-10.00 and 12.00-17.00 and 18.00-22.00. Thurs-Fri 7.00-10.00 and 12.00-17.00 and 18.00-23.30. Sat 7.30-10.30 and 12.00-15.00 and 16.00-23.30. Sun 8.00-10.30 and 12.00-17.00

Phone: +44 20 7292 6100
Internet: www.sanctumsoho.com/restaurant
Email: info@sanctumsoho.com
More Info: Located inside Sanctum Soho Hotel

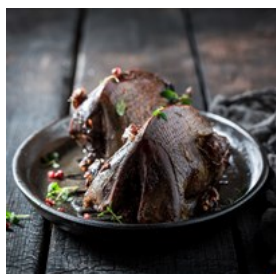
Borough Market



London's Borough Market is unsurprisingly popular – it's been gaining momentum since the 12th century, after all – but those who arrive for an early lunch can take advantage of this London fixture's ample offering of street food from all over the world, followed by a stroll through the stalls vending local produce.

Photo: I Wei Huang/Shutterstock.com
Address: 8 Southwark St, London
Opening hours: Mon–Thu 10am–5pm, Fri 10am–6pm, Sat 8am–5pm, Sun closed
Internet: <https://boroughmarket.org.uk>

Dinner by Heston Blumenthal



Heston Blumenthal's Knightsbridge restaurant Dinner is known for its inventive menu of historically inspired British dishes. Choose from dishes such as Earl Grey Tea cured Salmon (c.1730), Spiced Pigeon (c.1780) and Topsy Cake (c.1810) – or let the chef do the choosing by going for the Set Lunch Menu or splashing out on a seat at the Chef's Table, which directly faces the restaurant's custom-built show kitchen. Garden terrace tables are perfect for warmer days.

Photo: Shaiith/Shutterstock.com
Address: 66 Knightsbridge, London
Public Transport: Knightsbridge Tube station
Phone: +44 20 7201 3833
Internet: www.dinnerbyheston.com

Email: molon-dinnerhb@mohg.com
More Info: Located inside Mandarin Oriental Hyde Park hotel

Poppie's Fish & Chips



On your way back from Camden Market and want to stop for a meal? At Poppie's you can experience the traditional dish of the British working classes the way it should be enjoyed. Why not sit down to a nice portion of tasty cod with a serving of crisp and fluffy chips complete with tartare sauce and a slice of lemon on the side. Decorated in the style of 1940s London, Poppie's is known as one of the capital's finest fish and chip shops. As well as the branch in Camden, you'll find another two in Spitalfields and Soho.

Photo: from my point of view/Shutterstock.com
Address: 30 Hawley Crescent, London
Public Transport: Camden Town tube station
Phone: +44 020 7267 0440
Internet: www.poppiesfishandchips.co.uk
Email: www.poppiesfishandchips.co.uk/enquiry/
More Info: Other locations in Poppies Spitalfields and Soho

OXO Tower Restaurant, Bar and Brasserie



Dine in true British style with a beautiful raised view across the River Thames. This restaurant, bar and brasserie is a great place for a romantic meal, especially when combined with a casual stroll along the South Bank before and after your meal. Book ahead to make sure you get an alfresco table on the outdoor terrace and enjoy the scene with St Paul's Cathedral in the background. You can also expect to enjoy live jazz in the brasserie.

Photo: ariadna de raadt/Shutterstock.com
Address: Barge House Street, Oxo Tower Wharf, South Bank, London
Public Transport: Blackfriars Tube station
Phone: +44 20 7803 3888
Internet: www.harveynichols.com/restaurant/the-oxo-tower
Email: oxo.reservations@harveynichols.com

Mestizo Mexican Restaurant & Tequila Bar



Colourful and welcoming, Mestizo Mexican Restaurant and Tequila Bar serves quality, traditional Mexican cuisine with a refined touch. Downstairs from the relaxing restaurant you'll also find a stylish tequila bar serving cocktails, tequila and 'antojitos' (Mexican tapas).

Photo: Sofia Felguerez/Shutterstock.com
Address: Mestizo, 103 Hampstead Road, London
Public Transport: Euston Square and Warren Street Tube stations
Opening hours: Mon-Sat noon-10pm, Sun Sun noon-4pm / 5pm-10pm
Phone: +44 20 7387 4064
Internet: www.mestizomx.com
Email: eat@mestizomx.com

Gaicho - Piccadilly

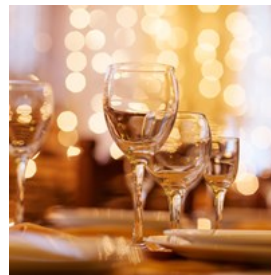


The glitzy Piccadilly branch of Argentinian restaurant Gaicho spans four floors. Alongside the main restaurant is the Cavas De Gaicho wine boutique, a ground-floor wine bar and a supper lounge on the top floor. Steaks, of course, are high on the menu - but there are many other dishes to try too, from Ecuadorian ceviche to Scamorza and potato ravioli.

Photo: hlphoto/Shutterstock.com
Address: 25 Swallow Street, London

Public Transport: Piccadilly Circus and Green Park Tube stations
Opening hours: Sun-Thu noon-11pm, Fri-Sun 11:30am-11pm
Phone: +44 20 7734 4040
Internet: www.gaichorestaurants.com/restaurants/piccadilly

Sketch



Sketch is an eccentric, original and elegant venue off Regent Street founded by French master chef Pierre Gagnaire and restaurateur Mazouz. The unique space comprises five dining areas: The Parlour patisserie and restaurant, The Glade bar, The Gallery brasserie, the two Michelin-starred Lecture Room & Library dining room and The East Bar.

Photo: My Good Images/Shutterstock.com
Address: 9 Conduit Street, Mayfair, London
Public Transport: Oxford Circus and Piccadilly Circus Tube stations
Opening hours: Daily (see website for times)
Phone: +44 20 7659 4500
Internet: www.sketch.london
Email: info@sketch.london

Masala Zone



Colourfully decorated with Indian folk art and collages of firecracker labels, the Bayswater branch of Masala Zone is as warm and welcoming as the other restaurants in this growing chain. The menu takes inspiration from Indian street food and home-cooked dishes, with Indian grills and regional curries as well as tapas-style Thali platters.

Photo: Sahil Rattanaphas/Shutterstock.com
Address: 75 Bishops Bridge Road, Bayswater, London

Public Transport: Royal Oak and Bayswater Tube stations
Phone: +44 20 7221 0055
Internet: www.masalazone.com
Email: bayswater@masalazone.com
More Info: This restaurant chain has 6 more locations around London

Sarastro



Sarastro is renowned for its flamboyant interior - part stage set, part old curiosity shop. Taking a nod from the nearby West End theatres, the dining room features opera boxes, luxuriant velvet tablecloths and cosy booths. The menu is Mediterranean and live shows regularly take place, with live opera on Sundays and Mondays, swing and Motown on Thursdays and Latin rhythms on Fridays.

Photo: Smiley.Dog/Shutterstock.com
Address: 126 Drury Lane, London
Public Transport: Covent Garden, Holborn and Temple Tube stations
Phone: +44 20 7836 0101
Internet: www.sarastro-restaurant.com
Email: info@sarastro-restaurant.com

Rainforest Cafe



Rainforest Cafe brings the sights and sounds of the jungle to London's famous Piccadilly Circus, with trumpets of elephants, gorilla roars, tropical fish tanks, an indoor waterfall and roaring thunderstorm sounds. Feeding time is a fun, family-friendly affair, with steaks, burgers, pasta and salads on the menu.

Photo: Quality Stock Arts/Shutterstock.com
Address: 20 Shaftesbury Avenue, London
Public Transport: Piccadilly Circus Tube station

Opening hours: Mon-Fri 12.00-22.00. Sat 11.30-22.30. Sun 11.30-22.00
Phone: +44 20 7434 3111
Internet: www.therainforestcafe.co.uk
Email: customercare@therainforestcafe.co.uk

The Blues Kitchen - Shoreditch



While you're exploring London's trendy East End why not book a table at the now well-established live music and burger restaurant The Blues Kitchen. Pop in for lunch, brunch, dinner or an evening of cocktails at the bar while you enjoy the blues and soul acts on almost every day of the week. Bite into the big brisket burger, share the shrimp taco salad or dig into the szechuan chicken wings with creamy mango dip. And don't forget to choose a succulent side dish of onion rings and fries to accompany your meal.

Photo: zygonema / Shutterstock.com
Address: 134-146 Curtain Road, Shoreditch, London
Opening hours: Mon-Wed noon-midnight, Thu noon-1am, Fri noon-2am, Sat 10am-2am, Sun 10am-midnight
Phone: +44 020 7729 7216
Internet: www.theblueskitchen.com
More Info: If you're not in Shoreditch you can always happen by their equally appealing Camden or Brixton branches

Locanda Locatelli



Michelin-starred restaurant Locanda Locatelli serves top-quality, traditional Italian food created with panache by head chef Giorgio Locatelli. Stand-out dishes at the Central London eaterie (according to the Michelin guide) include scallops, celeriac purée and saffron vinaigrette; and wild sea bass baked in salt and herb crust, escarole, sultanas and pine

kernels.

Photo: Kzenon/Shutterstock.com

Address: 8 Seymour Street, London

Public Transport: Marble Arch Tube station

Opening hours: Wed 5pm-11pm, Thur-Sun 12:30pm-11pm,
Mon & Tues closed

Phone: +44 20 7935 9088

Internet: www.locandalocatelli.com

Email: info@locandalocatelli.com

Duke of Cambridge



The Duke of Cambridge is the first and only British pub to be certified as organic by the Soil Association. The menu at the Islington gastropub

unsurprisingly features an excellent range of delicious organic food and drinks, and changes daily according to what seasonal food is available.

Photo: Magdanatka/Shutterstock.com

Address: 30 St Peters Street, Islington, London

Public Transport: Angel Tube station

Opening hours: Mon-Sat noon-11pm, Sun noon-10:30pm

Phone: +44 20 7359 3066

Internet: www.dukeorganic.co.uk

Email: duke@dukeorganic.co.uk

TOP 10 AFTERNOON TEAS



Ingus Krukltis/Shutterstock.com

Delicate finger sandwiches, tempting cakes, pots of steaming tea, scones with lashings of jam and cream. With so many delicious ingredients it's no wonder traditional afternoon tea remains as popular as ever in London. There are many top hotels, restaurants and cafés serving afternoon tea in London to this day, and there are many varieties available - from classic afternoon tea to low-calorie alternatives and even gentleman's afternoon teas.

Afternoon tea at The Ritz



Afternoon tea at The Ritz is a London institution. In fact, it's so popular that you have to book at least four weeks in advance.

There is a stunning total of five afternoon tea sittings every day to keep up with demand and they all take place in the building's beautiful Palm Court. Once you're comfortably settled in, you can tuck into one of the four afternoon tea options available and choose from 17 different types of loose-leaf tea while you listen to the pianist or harpist softly playing in the background.

Photo: Ingus Krukltis/Shutterstock.com

Address: 150 Piccadilly, West End

Public Transport: Green Park Tube station

Phone: +44 20 7300 2345

Internet: www.theritzlondon.com
Email: dining@theritzlondon.com
More Info: At The Ritz Hotel

Afternoon Tea at Fortnum & Mason



In 2012, Fortnum & Mason's newly renamed Diamond Jubilee Tea Salon was officially inaugurated by the Queen, the Duchess of Cornwall and the Duchess of Cambridge. Today, having afternoon tea or high tea in the Tea Salon is a suitably regal matter. A selection of cakes and pastries from the Coronation Cake Carriage, salmon blinis, and tea and cake pairing menus are all available.

Photo: [petereleven/Shutterstock.com](https://www.shutterstock.com)
Address: 181 Piccadilly, West End
Public Transport: Green Park and Piccadilly Circus Tube stations
Phone: +44 20 7734 8040
Internet: www.fortnumandmason.com
Email: reservations@fortnumandmason.co.uk
More Info: The Diamond Jubilee Tea Salon is located on the fourth floor of Fortnum & Mason

Afternoon tea at Brown's Hotel



Afternoon tea at Brown's Hotel is served in the cosy, timeless setting of the English Tea Room, complete with wood panelling, fireplaces and original art. Tuck into a selection of sweet and savoury snacks and enjoy a cup of tea from Brown's unique Prestige Seasonal Tea Library, all to the sound of music from the Baby Grand Piano. And have your plate replenished at no additional charge.

Photo: [Maximum Exposure PR/Shutterstock.com](https://www.shutterstock.com)
Address: Albemarle Street, Mayfair, London

Public Transport: Green Park and Piccadilly Circus Tube stations
Phone: +44 20 7518 4155
Internet: www.roccofortehotels.com
Email: tea.browns@roccofortehotels.com
More Info: At Brown's Hotel

Afternoon Tea at Hotel Café Royal



Ladies and gentlemen, pick your best jacket because afternoon tea at Hotel Café Royal requires you to be dressed appropriately. And for good reason. During the week, tea is taken in the excellent Ten Room restaurant, whereas weekend bookings are served in the glamorous Oscar Wilde Lounge, named this way because the man himself was a regular patron. There is nothing standard about this experience - even the ingredients are sure to offer many delightful surprises.

Photo: [Magdanatka/Shutterstock.com](https://www.shutterstock.com)
Address: 68 Regent Street, Piccadilly Circus, London
Public Transport: Piccadilly Circus Tube station
Phone: +44 20 7406 3310
Internet: www.hotelcaferoyal.com/afternoon-tea
Email: restaurants@hotelcaferoyal.com

Afternoon Tea at The Emmeline's Lounge



Take time out from visiting the nearby Houses of Parliament and Buckingham Palace. The bright lounge area at The Emmeline's provides a suitable setting for a quintessentially posh British afternoon tea. And the lounge's live harpist soothes even the weariest of minds. Have a drink of the bubbly beverage the Queen herself likes to enjoy and order the popular free-flowing champagne afternoon tea, brought

to you by the same supplier that provides Her Majesty with the drink.

Photo: Atiketta Sangasaeng/Shutterstock.com
Address: 22-28 Broadway, London
Public Transport: St.James's Park Tube station
Phone: +44 20 3301 1400
Internet: www.conradhotels3.hilton.com
Email: tea@conradstjames.com

Afternoon tea at The Dorchester



Afternoon tea is served five times a day at The Dorchester in the timeless Promenade and at the elegant Spatisserie. Choose from

Vintage Afternoon Tea on The Balcony, the Dorchester Afternoon Tea, Champagne Afternoon Tea or the bite-size Spatisserie Afternoon Tea. Special seasonal teas are also available at different times of the year.

Photo: heygigpic/Shutterstock.com
Address: Park Lane, London
Public Transport: Hyde Park Corner and Green Park Tube stations
Phone: +44 20 7629 8888
Internet: www.dorchestercollection.com
Email: restaurants.tdl@dorchestercollection.com

City Cruises Afternoon Tea



Take a river boat cruise along the Thames and enjoy a traditional afternoon tea of freshly made sandwiches, scones with clotted cream and

strawberry jam, cakes and unlimited tea. Enjoy a window view of sites such as the Houses of Parliament, the Tower of London, the Tate Modern, Tower Bridge and the London Eye. A recorded commentary plays throughout the

whole journey providing historical information that will enrich your experience.

Photo: jreika/Shutterstock.com
Address: Victoria Embankment, London
Public Transport: Westminster Tube station
Phone: +44 20 77 400 400
Internet: www.citycruises.com/london-thames-experiences/afternoon-tea-cruise
Email: info@citycruises.com

Royal Albert Hall Afternoon Tea



Any music enthusiast will want to book afternoon tea at the Royal Albert Hall. This iconic London venue has hosted countless numbers of

memorable concerts throughout the years and it is home to the annual BBC Proms. Afternoon tea is served in the venue's very own Verdi Restaurant, from Wednesday to Sunday. Twinings tea is served alongside sweet treats and finger sandwiches. If you would like a classier upgrade you can always order a glass of Moët & Chandon champagne.

Photo: T photography/Shutterstock.com
Address: Kensington Gore, South Kensington, London
Public Transport: Gloucester Road and South Kensington Tube stations
Phone: +44 20 7589 8212
Internet: www.royalalberthall.com
Email: food@royalalberthall.com

Afternoon Tea at Roseate House



Planning to visit Hyde Park and Kensington Gardens? Exploring the canals around Little Venice and Paddington? Why not take some time

out to rest and have afternoon tea at the luxurious Roseate House London (formerly

known as Royal Park Hotel). Indulge your tastebuds and try the fresh raisin scones with Devonshire clotted cream, the lemon posset, the carrot cake, the Victoria sponge and the specialty loose leaf tea.

Photo: jreika/Shutterstock.com

Address: 3-5 Westbourne Terrace, Paddington, London

Public Transport: Lancaster Gate and Paddington Tube stations

Phone: +44 20 7479 6600

Internet: www.roseatehotels.com/london/roseatehouse/

Email: info@theroyalpark.com

Afternoon Tea at The Goring



Indulge your royal fantasies with an afternoon tea at The Goring, just a few steps away from Buckingham Palace. This hotel has been perfecting the art of afternoon tea for more than a century. So much so that it was presented with the British Tea Guild Council's Top London Afternoon Tea Award. The five-star experience includes the option to take tea on The Terrace overlooking The Goring Gardens.

Photo: Teerapong Tanpanit/Shutterstock.com

Address: Beeston Place, Victoria, London

Public Transport: Victoria Tube station

Phone: +44 20 7396 9000

Internet: www.thegoring.com

Email: afternoontea@thegoring.com

BARS & NIGHTLIFE



glazok90/Shutterstock.com

London's nightlife is one of the most vibrant and varied in the world, with everything from mega clubs to live music. And from trendy bars to traditional British pubs.

Spots in central London like Soho and Leicester Square attract visitors most nights of the week, but if it's the more trendy venues you're interested in why not try neighbourhoods like Hoxton and Shoreditch in East London, or Brixton and Clapham in South London.

Here's just a taster of what London has to offer on a night out, including quality pubs and bars, world-renowned clubs, live music venues and much more.

Ministry of Sound



Converted from an old bus station in the 90s, the Ministry of Sound is a legendary spot in London's clubbing scene - and is an international brand too. Located close to Elephant and Castle, south of Waterloo, the club boasts five rooms, four bars, a VIP lounge, a courtyard area and what's said to be the world's best sound system.

Photo: Anthony Mooney/Shutterstock.com

Address: 103 Gaunt Street, Elephant & Castle, London
Public Transport: Elephant & Castle Tube station
Opening hours: Fri 22.30-06.00. Sat 23.00-06.00
Phone: +44 20 7740 8600
Internet: www.ministryofsound.com
Email: info@ministryofsound.com

Vaulty Towers



Run by the creative minds behind The Vaults, Vaulty Towers is a bar that perfectly captures the whimsical essence of the experimental art space beneath. It's packed with curios like an exaggeratedly tall bar stool, or a table disguised as a secret tree house. Whimsy runs through the drink menu, too: negronis are served on tap, and there is a genuine creative touch to everything they do, down to a makeshift spinning wheel to determine your pick of drink if you're so inclined.

Photo: [astarot/Shutterstock.com](https://www.shutterstock.com)

Address: 34 Lower Marsh, Bishop's, London
Phone: +44 20 7928 9042
Internet: www.vaultytowers.london

Marksman Public House

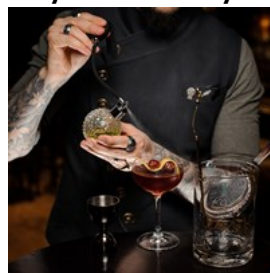


An award-winning establishment in London's flourishing East End features a revamped 150-year-old pub, unmistakably modern yet layered with history, and an upstairs dining room where you can fully expect to be served one of the city's finest Sunday roasts.

Photo: [Picnote/Shutterstock.com](https://www.shutterstock.com)

Address: 254 Hackney Rd, London
Internet: www.marksmanpublichouse.com

Mayor of Scaredy Cat Town



Sure, the concept of "insider-only" speakeasy is far from new, but we think this little place is worth seeking out. It's not just the satisfaction of being somewhere secret - Mayor of Scaredy Cat Town takes itself with a refreshingly healthy dose of irony, which shines through its "rules of engagement" (as point 2 reads, "The town is Scaredy Cat Town, not Cool Cats Town, the Mayor demands the highest standards of self deprecation"), all the while serving a great selection of inventive cocktails and finger foods; there's also a weekend brunch at 39£ a piece.

To get here, enter through The Breakfast Club (Spitalfields) and head straight for the Smeg fridge. Don't even think of leaving the same way you came in lest you blow their cover: there is a separate exit through the toilet.

Photo: [Maksym Fesenko/Shutterstock.com](https://www.shutterstock.com)

Address: 12-16 Artillery Ln, Spitalfields, London
Phone: +44 20 7078 9639
Internet: www.themayorofscaredycattown.com

M.Manze / The Jellied Eel Bar



The historic Cockney shop now shares its moody art deco space with a beloved cocktail bar called The Jellied Eel, which is in operation Friday & Saturday nights, 7pm-2am. Expect great cocktails (and mocktails), a menu of small Mediterranean-inspired plates, and guest DJs. They still serve the beloved pie, mash and eel Mon-Sat before 2pm.

Photo: [M Rose/Shutterstock.com](https://www.shutterstock.com)

Address: 87 Tower Bridge Rd, Bermondsey, London

Phone: +44 20 7407 2985

The Four Quarters



A bar in Peckham with major nostalgia-factor

packed full of retro arcade games. Each game is only 25 pence to play, so you can have them all,

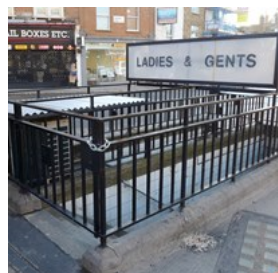
plus great vegetarian and vegan grub.

Photo: Atmosphere1/Shutterstock.com

Address: 187 Rye Ln, Peckham, London

Phone: +44 20 3754 7622

Ladies & Gents



What could easily have been a gimmick actually became one of Kentish Town's favourite watering holes: a former public toilet transformed into a

below-ground bar. There is another one in Camden now - walk up or down Kentish Town Road if either is full.

Photo: Ewan Munro/Flickr (image cropped)

Address: 2 Highgate Rd, Kentish Town, London

Phone: +44 20 7813 7562

Internet: <https://ladiesandgents.co>

The Vaults



Housed deep below the ground (underneath London's Waterloo station) are The Vaults: a one-of-a-kind venue for experimental art in all its forms. Their calendar is updated regularly, and since anyone can rent a space to host an event (all rooms are for hire), the selection is expectedly both quirky and robust.

Photo: Daniel Edwins/Flickr (image cropped)

Address: Leake St, Bishop's, London

Phone: +44 20 7401 9603

Internet: www.thevaults.london

The Argyll Arms



Known for its real ales, traditional pub grub and beautiful Victorian décor, The Argyll Arms is a slice of old London in the bustling shopping district

of Oxford Street. Completed in 1742, the Grade II listed pub is named after the second Duke of Argyll and there is a rumour that a secret tunnel once connected the pub to the duke's mansion.

Photo: Syda Productions/Shutterstock.com

Address: 18 Argyll Street, London

Public Transport: Oxford Circus Tube station

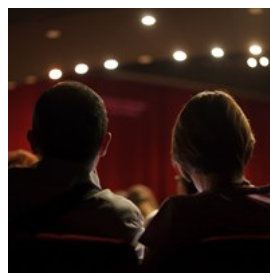
Opening hours: Mon-Thu 10.00-23.30. Fri-Sat 10.00-00.00.

Sun 10.00-23.00

Phone: +44 20 7734 6117

Internet: www.nicholsonspubs.co.uk

The Top Secret Comedy Club



In keeping with its name, the Top Secret Comedy Club is perhaps London's best kept secret when it comes to comical entertainment. But watch

out - it's unlikely to stay this way for long! Dishing out the jests, the quips and the witticisms every night of the week are a range of both well-established and up-and-coming comedians. At prices accessible beyond belief, you can find yourself spending the evening (and only a pound or two) at one of the city's most interesting comedy venues.

Photo: aerogondo2 / Shutterstock.com

Address: 170 Drury Lane, London

Opening hours: Mon-Fri 18.00-23.00. Sat 14.00-23.00. Sun

14.00-22.30

Phone: +44 07956 539784

Tickets: Prices vary depending on event - sometimes free entry

Internet: www.thetopsecretcomedyclub.co.uk

Email: info@thetopsecretcomedyclub.co.uk

Ronnie Scott's Jazz Club



Perhaps the capital's most iconic jazz venue. Up and running since 1959, Ronnie Scott's has had the pleasure of hosting some of the

world's most renowned musicians. Whether it's the weekly jam sessions in the upstairs cocktail bar or any of the top notch live bands playing in the main club, it is guaranteed you will enjoy the evening in style in one of the coolest and classiest places in London.

Photo: Freedom Studio/Shutterstock

Address: 47 Frith Street, Soho, London

Opening hours: Daily (see website for times)

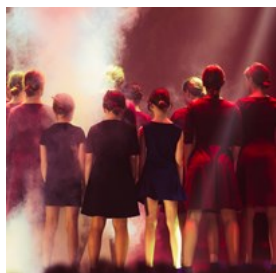
Phone: +44 20 7439 0747

Tickets: Prices vary depending on event.

Internet: www.ronniescotts.co.uk

More Info: Booking a spot in advance is highly recommended

The King's Head Theatre Pub



A cheaper and more authentic alternative to the glamour of London's West End can be found hidden away upstairs or downstairs in many pubs

across the capital. The King's Head in Islington was the first theatre pub to open since Shakespearean times. And if you're willing to leave the city centre for an evening, The King's Head offers theatre, musicals and stand-up comedy. This is where a handful of world-renowned actors started off before being

propelled to fame and where many a successful West End production was born. Make sure to have a look at the shows on their website and see if anything catches your eye before booking tickets.

Photo: Shymanska Yunnona / Shutterstock.com

Address: 115 Upper Street, Islington, London

Opening hours: Mon-Tue 11.00-23.00. Wed 11.00-2.00. Thu 11.00-01.00. Fri-Sat 11.00-02.00. Sun 12.00-00.00

Phone: +44 0207 226 8561

Tickets: Prices vary depending on event

Internet: www.kingsheadtheatrepub.co.uk

Email: kingsheadtheatre@youngs.co.uk

The Atlas Pub



The Atlas Pub is a warm and relaxing venue, where you'll find stylish wood panelling, fresh flowers and a brick fireplace. It also has a fine selection of wines and ales, a menu full of delicious and diverse dishes, and is the location of The London Wine Academy's popular wine workshops.

Photo: marino bocelli/Shutterstock.com

Address: 16 Seagrave Road, Fulham, London

Public Transport: West Brompton station

Opening hours: Mon-Sat 12.00-23.00. Sun 12.00-22.30

Phone: +44 20 7385 9129

Internet: www.theatlaspub.co.uk

Email: reservations@theatlaspub.com

Gordon's Wine Bar



Thought to be London's oldest wine bar (it was established in 1890), Gordon's is a wonderfully atmospheric venue that feels like something from another era. This candlelit cellar-bar serves a wide range of wines, sherries and ports from the

barrel, as well as big hearty meals. Always busy, you're advised to arrive around 4pm if you want to bag a table.

Photo: Igor Normann/Shutterstock.com

Address: 47 Villiers Street, London

Public Transport: Charing Cross and Embankment Tube stations

Opening hours: Mon-Sat 11.00-23.00. Sun 12.00-22.00

Phone: +44 20 7930 1408

Internet: www.gordonswinebar.com

Email: info@gordonswinebar.com

The Prince Alfred



Established in 1863, The Prince Alfred has retained much of its period features, including the original Victorian snugs - each with its own

door onto the street and separated from each other by a wooden partition with a small access door. The PA, as it is known locally, also serves food in the adjoining Formosa dining room, and is located close to the picturesque waterside of Little Venice.

Photo: Shebeko/Shutterstock.com

Address: 5a Formosa Street, London

Public Transport: Warwick Avenue Tube station

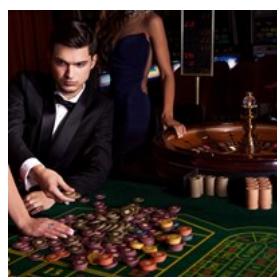
Opening hours: Mon-Thu 12.00-23.00. Fri-Sat 12.00-00.00. Sun 12.00-23.00

Phone: +44 20 7286 3287

Internet: www.theprincealfred.com

Email: princealfred@youngs.co.uk

The Hippodrome Casino



Just like Leicester Square, where it is located, the five-floor Hippodrome Casino is glitzy and vibrant. Aside from the gaming areas,

there are live shows, six bars, a restaurant, two

lounges and an outdoor smoking and cigar bar. The heart of it all is the Heliot bar on the first floor balcony, serving classic cocktails with a Hippodrome twist.

Photo: AS Inc/Shutterstock.com

Address: Leicester Square, London

Public Transport: Leicester Square Tube station

Opening hours: 24 hours a day / 7 days a week

Phone: +44 207 769 8888

Internet: www.hippodromecasino.com

Email: info@hippodromecasino.com

SHOPPING



Maridav/Shutterstock.com

Shopping in London is one of the most popular pastimes for visitors and locals alike. And it's no wonder given the huge range of shopping destinations across the capital, from high-end luxury boutiques and huge department stores to lively markets and vintage pop-ups.

The key is to find the right shopping area for you, be it the bright lights and big brands of the West End, the quirky and outrageous fashion of Camden or the smart suits in Savile Row. Here are just a few of London's top shopping destinations well worth a visit.

Oxford Street



Oxford Street is the ultimate London shopping destination, packed with high-street fashion, international brands, technology, homewear

and much, much more. No wonder its streets are always crowded with bag-laden shoppers!

Favourite destinations include a huge branch of Topshop, plus iconic department stores such as Selfridges, John Lewis, House of Fraser and Marks & Spencer.

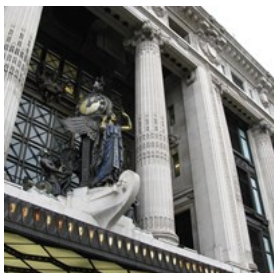
Photo: alice-photo/Shutterstock.com

Address: Oxford Street, London

Public Transport: Oxford Circus, Tottenham Court Road, Bond Street and Marble Arch Tube stations

Internet: www.oxfordstreet.co.uk

Selfridges



Selfridges' flagship London store is one of the world's finest department stores. It is six floors of fabulous fashion, pop-up concessions, electrical

gadgets, stylish homeware and tasty food. But it's far more than just a shopping destination. It's also a social hub - with events, bars, restaurants, cafés, art exhibitions and the odd rooftop party.

Photo: inavanhateren/Shutterstock.com

Address: 400 Oxford Street, London

Public Transport: Bond Street and Marble Arch Tube stations

Opening hours: Mon-Sat 09.30-21.00. Sun 11.30-18.00

Phone: +44 207 160 6222

Internet: www.selfridges.com

Email: customerservices@selfridges.com

Portobello Road Market



Head to Notting Hill on a Saturday, when the Portobello Road Market (claimed by some to be "the world's most famous market") is in full swing.

The market is known for its antiques and collectables, but there's huge variety that goes beyond, ranging from second-hand clothing to fruit & veg, plus street food. The market closes on Sundays, but shops and restaurants are mostly open all days of the week.

Photo: Alexey Fedorenko/Shutterstock.com

Address: Portobello Road, London

Internet: www.portobelloroad.co.uk/the-market

We Built This City



This souvenir shop with a difference stays true to its self-asserted mission of 'revolutionising London souvenirs' by packing its compact Soho outlet in 57 Carnaby Street full of non-banal pieces designed by local artists. There's something for everyone: music- and art-lovers, as well as those with a penchant for a particular area of the city.

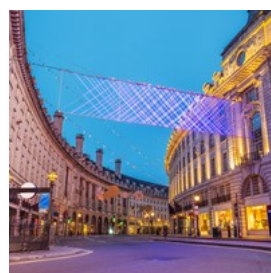
Photo: LightField Studios/Shutterstock.com

Address: 57 Carnaby St, Soho, London

Phone: +44 20 3642 9650

Internet: www.webuilt-thiscity.com

Regent Street



With its beautiful curved facades, listed architecture and elegant hotels, Regent Street is a cultural destination as well as a shopping

hotspot. Top brands such as Liberty, Apple and

Hamleys congregate here, alongside what is the largest Burberry store in the world.

Photo: Zoltan Gabor/Shutterstock.com

Address: Regent Street, London

Public Transport: Oxford Circus and Piccadilly Circus Tube stations

Internet: www.regentstreetonline.com

Email: info@regentstreetonline.com

Liberty



Instantly recognisable by its iconic mock-Tudor frontage, Liberty is a lavish design emporium located just off Regent Street. It first opened its doors in 1875, and was later crowned by Oscar Wilde “the chosen resort of the artistic shopper.” Today it's best known for its top-quality fashion, jewellery, beauty, furniture, toys, oriental rugs and much more.

Photo: Clare Louise Jackson / Shutterstock.com

Address: Regent Street, London

Public Transport: Oxford Circus Tube station

Opening hours: Mon-Sat 10.00-20.00. Sun 11.30-18.00

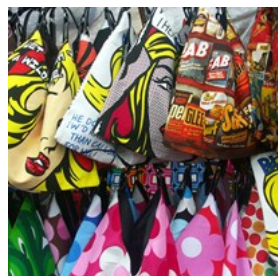
Phone: +44 20 7734 1234

Internet: www.liberty.co.uk

Email: customerservices@libertylondon.com

More Info: The main entrance is located on Great Marlborough Street

Camden Lock Market



Located next to the picturesque canal, Camden Lock Market is a must if you're into quirky, alternative and unique gifts, fashion and crafts.

Comprising a mix of shops and stalls, the buzzing market has been attracting crowds of visitors since 1972. While you're in the area, make sure you visit the nearby Stables Market and Camden

Market (formerly Buck Street Market).

Photo: Chris Mole/Shutterstock.com

Address: 54-56 Camden Lock Place, Chalk Farm Road, London

Public Transport: Camden Town and Chalk Farm Tube stations

Opening hours: Daily 10.00-18.00

Phone: +44 20 3763 9900

Internet: www.camdenmarket.com

Email: info@camdenmarket.com

Covent Garden and Seven Dials



As well as its street entertainment, Covent Garden is famous for its covered markets - Apple Market, Jubilee Market and East Colonnade

Market - which sell everything from British-made arts and crafts to jewellery and antiques. The area has many permanent shops too. From the ever-popular Disney Store to travel book shop Stanfords. Close by are two other unique London shopping destinations, Neal Street and Covent Garden's 'village' Seven Dials, a small agglomeration of streets packed with fashion boutiques, vintage shops, jewellers and design furniture stores.

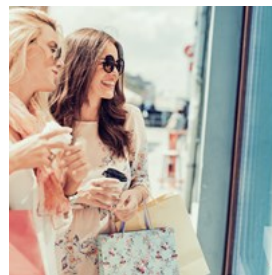
Photo: Andres Garcia Martin/Shutterstock.com

Address: Covent Garden, London

Public Transport: Covent Garden Tube station

Internet: www.coventgarden.london

Knightsbridge



Knightsbridge and the surrounding areas of Chelsea and South Kensington are known for their high-end fashion and prestigious brands.

On Sloane Street, you'll find Prada, Gucci,

Giorgio Armani, Dolce et Gabbana, Fendi and many more top labels. The road intersects to the north with Brompton Road, home to the likes of Harrods and Harvey Nichols, and to the south with King's Road, where punk and other counterculture movements flourished in the 1960s. Today this is where you'll find a Vivienne Westwood shop and a Peter Jones department store.

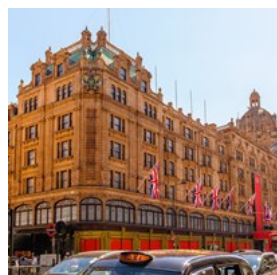
Photo: Ivanko80/Shutterstock.com

Address: Knightsbridge, London

Public Transport: Knightsbridge, Sloane Square and South Kensington Tube stations

Internet: www.knightsbridge-estate.com

Harrods



Famous around the world, Harrods is a gold-and-green beacon in London's shopping scene. Inside the stunning store you'll find everything

from homewares and kitchen essentials to books and beauty products. But most people make a beeline for the Harrods-branded gifts, fashion aisles and food hall - an ornate treasure trove of foodie delicacies and sweet treats.

Photo: Richie Chan/Shutterstock.com

Address: 87-135 Brompton Road, Knightsbridge

Public Transport: Knightsbridge Tube station

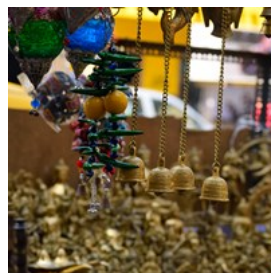
Opening hours: Mon-Sat 10.00-21.00. Sun 11.30-18.00

Phone: +44 20 7730 1234

Internet: www.harrods.com

Email: help@harrods.com

Greenwich Market



Packed with unique arts and crafts, Greenwich Market is the place to go for one-off, unique gifts and souvenirs - be it handmade jewellery, natural beauty products, children's toys or antiques (every day is different). There are also permanent shops selling art, clothing and accessories - plus a good range of food stalls serving up delicious cuisine from around the world.

Photo: Pawan Pathak/Shutterstock.com

Address: Greenwich High Road, London

Public Transport: Cutty Sark and Greenwich stations

Opening hours: Tue-Sun 10.00-17.30

Phone: +44 020 8269 5096

Tickets: Free entry

Internet: www.greenwichmarketlondon.com

Email: hello@greenwichmarketlondon.com

More Info: The market can also be accessed from College Approach

Borough Market



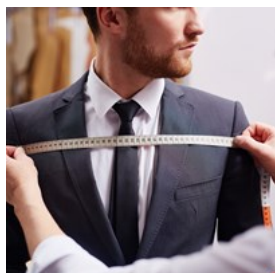
London's Borough Market is unsurprisingly popular - it's been gaining momentum since as early as the 12th century, after all - but those who arrive for an early lunch can take advantage of this London fixture's ample offering of street food from all over the world, followed by a stroll through the stalls vending local produce.

Photo: I Wei Huang/Shutterstock.com

Address: 8 Southwark St, London

Internet: <https://boroughmarket.org.uk>

Savile Row



A street in Mayfair, Savile Row has been synonymous with traditional bespoke tailoring since 1803. It remains a key player in the London fashion scene thanks to cutting-edge designers such as Richard James and Oswald Boateng. For shirts, ties, hats and other accessories head for nearby Jermyn Street.

Photo: Pressmaster/Shutterstock.com

Address: Saville Row, Mayfair, London

Mayfair



Mayfair is home to some of the world's most prestigious brands and luxury hotels, and is London's most exclusive shopping destination.

Along Mount Street you'll find many luxury fashion and beauty brands, art and antiques dealers, as well as top restaurants. Other Mayfair retail residents include Marc Jacobs, Christian Louboutin, Jenny Packham, Balenciaga, Purdey and William & Son.

Photo: Alexey Fedorenko/Shutterstock.com

Address: Mayfair, London

Public Transport: Bond Street, Marble Arch and Green Park Tube stations

Phone: +44 20 7312 0011

Internet: www.grosvenorlondon.com/home

Email: customercentre@grosvenor.com

Westfield London



Westfield London is a super-sized shopping and leisure destination in West London's Shepherd's Bush district. Inside this stunningly designed mall you'll find more than 265 luxury and high-street shops, from Debenhams to Dior (located inside luxury brand area The Village). There are also plenty of restaurants and bars to refuel at along the Southern Terrace, plus a 14-screen cinema, gym, spa, library and a packed programme of special events in the central Atrium.

Photo: Syda Productions/Shutterstock.com

Address: Ariel Way, London

Public Transport: Shepherd's Bush and Wood Lane Tube stations

Opening hours: Mon-Sat 10.00-22.00. Sun 12.00-18.00

(Individual store times may vary)

Phone: +44 203 371 2300

Internet: uk.westfield.com/london

Westfield Stratford City



The sister mall to the pioneering Westfield London, Westfield Stratford City has revitalised East London with its great brands, top restaurants and entertainment venues. As well as 250 shops and 70 dining spots there's a cinema, an All Star Lanes bowling alley and a casino of around 65,00 sq. feet. While you're there, look out for great views over the stunning Queen Elizabeth Olympic Park nearby.

Photo: Monkey Business Images/Shutterstock.com

Address: Montfichet Road, Queen Elizabeth Olympic Park, London

Public Transport: Stratford Tube station

Opening hours: Mon-Fri 10.00-21.00. Sat 09.00-21.00. Sun

12.00-18.00

Phone: +44 208 221 7300

Internet: uk.westfield.com/stratfordcity

Harvey Nichols



Harvey Nichols, or Harvey Nicks as it's known locally, is a favourite among London's fashionistas. Its flagship Knightsbridge store

opened in the 1880s and today boasts a massive eight floors of fashion, beauty and lifestyle collections. The fifth floor is given over to the stylish Fifth Floor Restaurant, Café and Bar - plus a food market and wine shop.

Photo: Wang An Qi/Shutterstock.com

Address: 109-125 Knightsbridge, London

Public Transport: Knightsbridge and Hyde Park Corner Tube stations

Opening hours: Mon-Sat 10.00-20.00, Sun 11.30-18.00

Phone: +44 20 7235 5000

Internet: www.harveynichols.com/store/knightsbridge

Email: contact.knightsbridge@harveynichols.com

TOURIST INFORMATION



ESB Professional/Shutterstock.com

Passport / Visa



Citizens of the European Union member-states, Norway, Liechtenstein, Iceland, Switzerland, and Overseas Countries and Territories (OCT) only

require a valid passport to enter the UK. Residents of a further 10 countries do not require entry visas for stays under 6 months: the USA, Canada, Australia, New Zealand, Japan, Singapore, South Korea, South Africa, Hong Kong, and Malaysia. Nationals of some further countries do not require a visa, but need to hold an entry certificate. Use the UK Government website to check for specific requirements: www.gov.uk/check-uk-visa

Photo: TukTuk Design

Best Time to Visit



London is graced by a mild climate and, as such, can be visited at any time of the year. However, a few things need to be considered first. Most of

the royal palaces and residences, like the State Rooms at Buckingham Palace, are only open to the public during the summer months. Many of the city's most important festivals, like the British Summer Time Music Festival, also take place during this time. Late June to mid July is also when some of the best sales are on in shops around the capital.

Spring is also a good season for a visit, since the weather is generally good and finding accommodation is both easier and cheaper (high season in London means a lot of tourists). And if you're not too bothered about the grey weather,

then low season (January and February) can be a good option too, when there are fewer tourists and prices are lower.

Photo: VectorA/Shutterstock.com

Airport - London Heathrow



London Heathrow Airport is one of the busiest airports in the world, with five terminals. There are various ways to travel from Heathrow Airport to your destination. Hotel Hoppa and Hotel By Bus are shared ride services, transporting travellers to (and from) local and Central London hotels by coach. The quickest journey is by train on the Heathrow Express, which runs every 15 minutes (from approximately 5am to 11.45pm) and gets you into Central London in 15 minutes for £20. You can also travel into Central London via Heathrow Connect (£9.50), the Piccadilly line on London Underground, a coach to Victoria Coach Station (£6), bus (£1.40 Oyster/£2.40 cash) or taxi (£50 to £80 in a metred black cab).

Photo: Juan Garces

Address: Heathrow Airport, Hounslow, Middlesex

Public Transport: London Heathrow Airport Train Station

Phone: +44 844 335 1801

Internet: www.heathrow.com

Airport - London Gatwick



London Gatwick Airport is the second largest airport in the UK (Heathrow Airport is the largest), with two terminals: North and South. The fastest route from the airport into Central London is via the Gatwick Express, with trains departing every 15 minutes. The non-stop

journey to Victoria Station takes 30 minutes and costs £19.90. Alternative travel options include going by First Capital Connect train to London Bridge, City Thameslink, Blackfriars, Farringdon or St Pancras International (£10 to St Pancras); Southern train services (£19.90 to Victoria Station), coach (£8), easyBus (£2 - online price) or taxi.

Photo: Juan Garces

Address: Gatwick Airport, West Sussex

Public Transport: London Gatwick Airport Train Station

Phone: +44 844 892 0322

Internet: www.gatwickairport.com

Airport - London Stansted



London Stansted Airport is the third busiest airport in the UK, and where many low-cost airlines serving Europe and the Mediterranean operate from. On the Stansted Express you can reach Liverpool Street station in 47 minutes. Trains run every 15 minutes and the journey costs £23.40. You can also travel between Stansted Airport and Central London by coach with easyBus (£2 - online price), National Express (from £5) or Terravision (from £6). Alternatively book a minicab in advance with 24x7 Stansted. Black cabs do not operate from Stansted (though you can take one to the airport).

Photo: Juan Garces

Address: Stansted Airport, Essex CM24 1RW

Public Transport: Stansted Airport Train Station

Phone: +44 844 335 1803

Internet: www.stanstedairport.com

Airport - London Luton



London Luton Airport is located just 56km north-west of Central London, and is a popular base for low-cost airlines.

A regular shuttle bus transports passengers from the airport to the nearest station, Luton Airport Parkway, which takes about 10 minutes. From the station you can catch an East Midlands Trains or First Capital Connect service into Central London taking somewhere between 21 and 25 minutes (for £13.50). Other options include the easyBus express service (from £2 - online price), the Green Line 757 coach service to Victoria Coach Station (for £17) or Terravision coaches to Victoria Coach Station (for £15). Each transport service stops at different destinations en route. A metered taxi ride to or from Central London costs around £80.

Photo: Juan Garces

Address: London Luton Airport, Luton, Bedfordshire

Public Transport: Luton Airport Parkway

Phone: +44 1582 405100

Internet: www.london-luton.co.uk

Airport - London City



London City Airport is a single runway airport located 9.5km east of Central London, and serving mainly short-haul and business flights. The

airport is on the Docklands Light Railway, which connects to London's Tube network at Canning Town, Stratford and Bank and uses the same price structure. Buses serve the airport too, with numbers 473 and 474 providing a connection to other East London destinations. You can also take a cab from the taxi rank outside the airport.

Photo: Juan Garces

Address: London City Airport, Hartmann Road, London

Public Transport: London City Airport DLR Station

Phone: +44 20 7646 0088

Internet: www.londoncityairport.com

Public Transport - Bus



London's bus network stretches right across the capital, and provides a frequent and accessible service. If you're using an Oyster card, a single trip

costs £1.40. All you have to do is 'touch in' when you get on the bus. And remember there is a daily cap of £4.40 if you're using only bus and tram services. If you're paying by cash a single bus ticket is £2.40. Seven-day, one-month and annual bus passes are also available.

To navigate your way around the network, pick up a Central London Bus Guide from travel information centres at larger Tube stations or use Transport for London's online Journey Planner. A reduced service of night buses operates throughout the night and the early hours of the morning. Most late-night routes will stop at Trafalgar Square. Various concessions are available for children, students, the elderly and disabled travellers.

Photo: Pierre-Luc Auclair

Address: London

Phone: +44 343 222 1234

Internet: tfl.gov.uk

More Info: tfl.gov.uk/fares/free-and-discounted-travel

Public Transport - Tube



There are 12 Underground or 'Tube' lines serving Greater London, which connect at various points to the Docklands Light Railway

(DLR) and local rail network. The Tube usually operates from 5am to midnight from Monday to Saturday, with a reduced service on Sunday. Plan your route by picking up a free Tube map from any Underground station, or using Transport for London's online Journey Planner. Fares vary depending on which of London's six travel 'zones' you travel through, though they are considerably cheaper with an Oyster card than buying paper tickets. Various concessions are available for children, students, the elderly and disabled travellers.

Photo: Michael Zenaty

Address: London

Phone: +44 343 222 1234

Internet: tfl.gov.uk

More Info: tfl.gov.uk/fares/free-and-discounted-travel

Public Transport - Docklands Light Railway



The Docklands Light Railway (DLR) serves East London and connects with the Tube network at Bank, Tower Gateway (Tower Hill),

Shadwell, Stratford, Bow, Heron Quays, Canning Town and Canary Wharf. It also connects to the Emirates Air Line cable car at Royal Victoria. Fares are the same as on the Tube, and the DLR runs from 5.30am to 12.30am Monday to Saturday and from 7am to 11.30pm on Sunday. Fares are the same as those on the Tube, and both Oyster card and Travelcard holders can use the DLR.

Photo: Michael Zenaty

Address: London

Phone: +44 343 222 1234

Internet: tfl.gov.uk

Public Transport - Thames River Bus



Travel with ease along the Thames on board a river bus. There are six different routes that all stop at destinations along the riverbank between

Putney and Woolwich Arsenal. Popular services include the Thames Clippers route between Hilton London Docklands Riverside and Canary Wharf, the Tate-to-Tate boatride between Tate Britain and Tate Modern, and the journey between London Eye and Greenwich village. Depending on the service you'll be able to buy your ticket either before boarding or on board. Discounts are available when using Travelcards and Oyster cards.

Photo: VisitLondon.com

Address: London

Phone: +44 343 222 1234

Internet: tfl.gov.uk

Public Transport - Local Trains



As well as the Underground, London has its own local train network, which connects to the Tube at many points. The main train

operators serving London are Silverlink, First Capital Connect, SouthEastern Railway, Southern Railway, London Overground and Greater Anglia. These local lines are, in turn, connected to the national rail network and the Eurostar. You can use your Oyster card on all trains operating within Zones 1-9, with the

exception of Heathrow Express and a few other select services. Several different railcards are available too, providing discount fares to their holders.

Photo: Michael Zenaty
Address: London
Phone: +44 343 222 1234
Internet: tfl.gov.uk

Public Transport - Trams



London's tram network, Tramlink, was introduced in the year 2000 and it runs in specific parts of South London - between Wimbledon, Croydon,

Beckenham and New Addington. Trams run approximately every seven minutes to New Addington and every 10 minutes to Wimbledon, Elmers End and Beckenham Junction during the day from Monday to Saturday. Fares are the same as on buses. This means there is a flat rate of £1.40 when using an Oyster card and £2.40 when paying by cash. Travelcards and bus passes are also valid on trams.

Photo: Michael Zenaty
Address: London
Phone: +44 343 222 1234
Internet: tfl.gov.uk
More Info: www.visitlondon.com/traveller-information/getting-around-london/tram

Public Transport - Cycle Hire Scheme



Hop on a 'Boris bike' and zip around London using the city's public bike-sharing scheme. Named after London's former mayor Boris

Johnson, the popular red bikes can be picked up at over 550 bicycle docking stations across

London - which means you're never far away from one. After you've paid your registration fee (from £2), you can hire a bike for a day, a week or even a year. The bikes are free to use for the first 30 minutes, after which the price increases by £2 every extra 30 minutes. When you've finished your journey, simply return the bike to your nearest docking station - you can find out where that is using the Santander Cycles app.

Photo: ClkerFreeVectorImages
Address: London
Phone: +44 343 222 6666
Internet: tfl.gov.uk

Public Transport - Emirates Air Line



Cross the Thames in style on board the Emirates Air Line, London's cable car connecting Greenwich Peninsula and the Royal Docks. As well as taking

you across the river in less than 10 minutes, it provides an amazing bird's eye view of London and the Thames. The fare is £3.20 using an Oyster card, or you can buy a return journey (known as a '360° tour') for £6.40 from the terminals at either end of the line. Multi-journey boarding passes (£10 for 10 single trips) and private cabin packages are also available.

Photo: DM-Studio/Shutterstock.com
Address: Emirates Greenwich Peninsula, Greenwich, London
Phone: +44 343 222 1234
Internet: www.emiratesairline.co.uk

Taxi



Taking a ride in one of London's iconic black cabs makes for a very comfortable and spacious ride. Hail a cab in the street or pick one up at a

taxi rank. Your journey is calculated using a meter, with a minimum charge of £2.40. Watch out though, because the price can go up pretty quickly and the roads in central London are often packed with cars. London also has many private vehicles for hire, as well as minicabs - these are unmetered so check the fare when booking. To find a local, reputable firm download Transport for London's free CabWise app or check the Hailo app to find a nearby black cab.

Photo: VisitLondon.com
Address: London
Phone: +44 343 222 4000
Internet: tfl.gov.uk

Post



Postage stamps are available across London at post offices, newsagents and supermarkets. To post a package or small

souvenirs, drop into a post office - you can find your nearest branch on their official website. Post offices are generally open Monday-Friday from 9.00am to 5.30pm and Saturday from 9.00am to 12.30pm.

Photo: Andy Fuchs
Address: London
Internet: www.postoffice.co.uk

Pharmacy



Whether you need to buy over-the-counter medication or collect a prescription, there are plenty of pharmacies all over the capital. Boots

and Superdrug are two big chemist chains. You will also find pharmaceutical products at some of the larger supermarket branches.

Boots London Piccadilly Circus:

Photo: Gemma Garner
Address: 44-46 Regent St, London
Public Transport: Piccadilly Circus Tube station
Opening hours: Mon-Fri 08.00 - 00.00. Sat 09.00-00.00. Sun 12.30-18.30
Phone: +44 207 7346 126
Internet: www.boots-uk.com

Telephone



The international dialling code for the UK is +44 or 0044, which replaces the first 'zero' of the phone number. So, for example, to call the number 020

7946 0000 from abroad you would dial +44 20 7946 0000.

The area codes for London are (020) 7, (020) 8 and (020) 3. If you're dialling a London number from another fixed phone line within Greater London you don't need to dial the '020' before the number, just the rest of the number starting with 7, 8 or 3.

Photo: Jardson Almeida

Electricity



Electrical appliances are connected to the UK mains supply using a three-pin plug. This plug fits into a wall socket. The sockets come with

on-and-off switches, unlike in many other countries.

The average voltage of a UK power socket is 230v or slightly higher, so check the voltage of your device before plugging it in. Voltage adaptors and convertors are available from London airports and high-street electrical chains such as Argos or Curry's.

Power sockets are available at many coffee shops with WiFi and on some overground trains. Need to charge your mobile? Download the 'find-a-chargebox' iPhone app to find your nearest ChargeBox.

Photo: Stirling Tschan

Population

8.1 million

Currency

British pounds, £1 = 100 pence

Opening hours

Typical shopping hours are Monday-Saturday 9.00-17.30. Many department stores stay open until 18.00, some until 19.00 or 20.00 on Wednesdays or Thursdays. Larger shops are often open 10.00-18.00 on Sundays.

Newspapers

The Times
The Telegraph
The Guardian
Daily Mail
The Independent
London Evening Standard

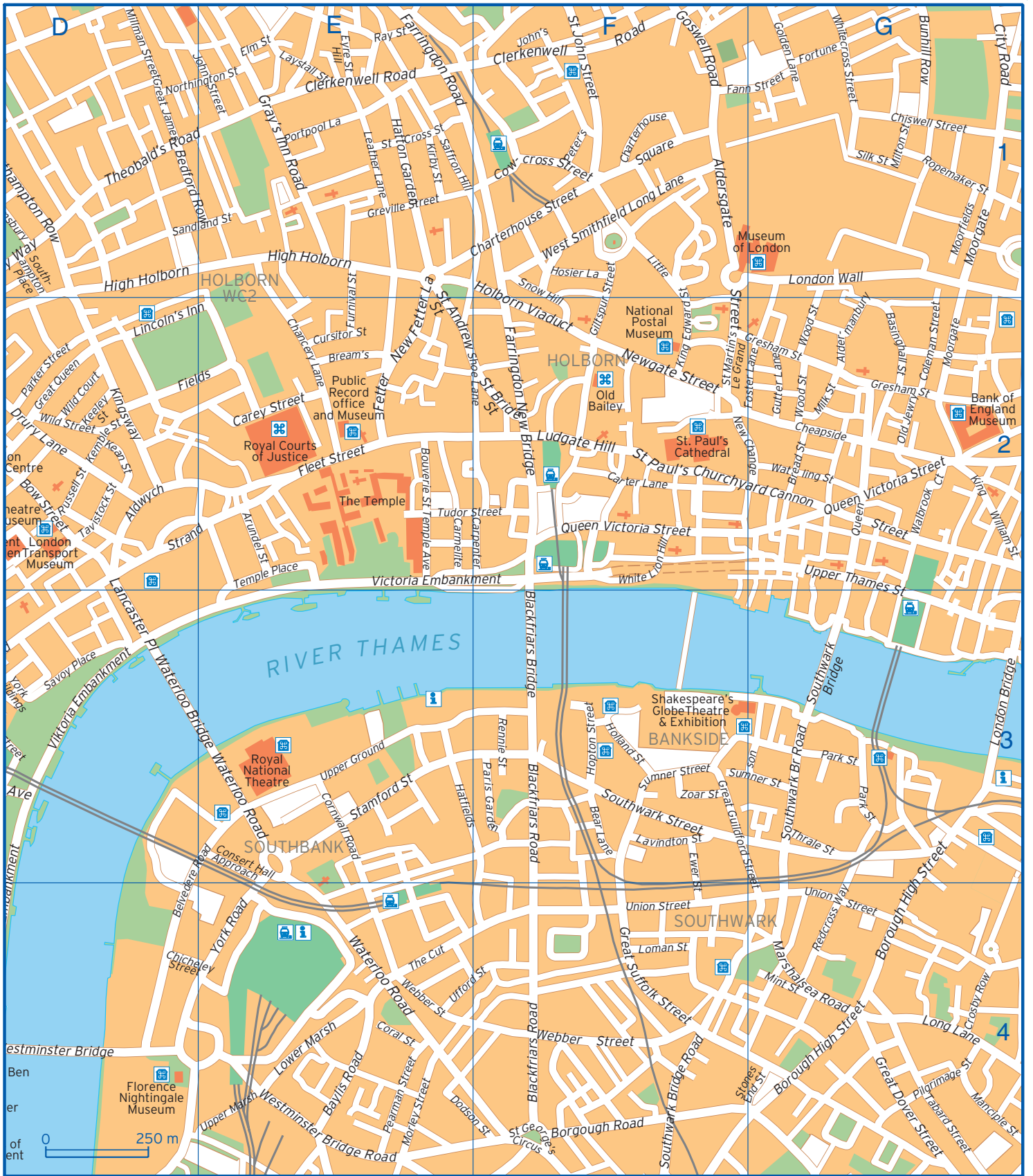
Emergency numbers

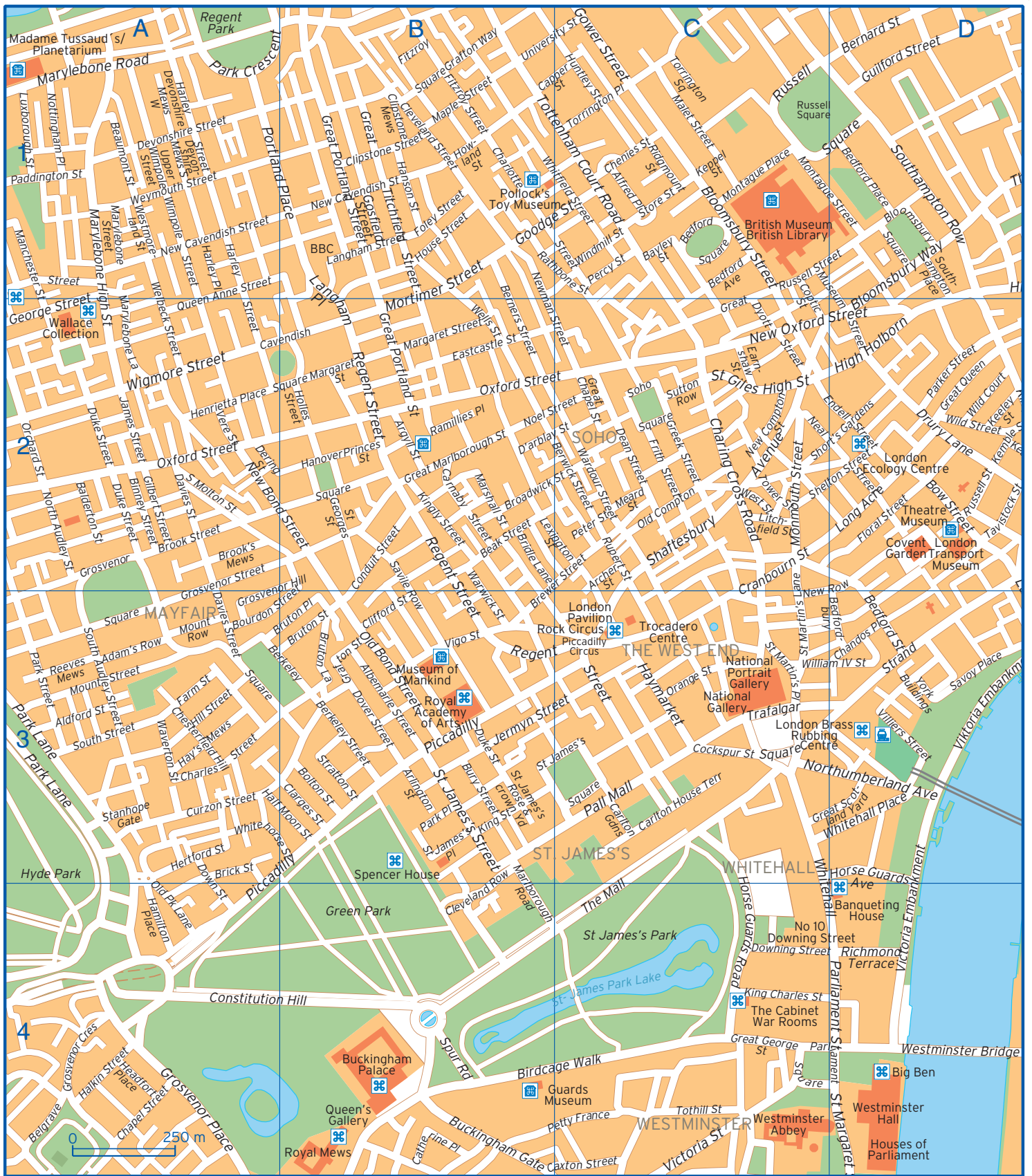
999

Tourist information

City Information Centre
St. Paul's Churchyard,
London,

EC4M 8BX
+44 20 7332 1456





Adam's Row	A3	Broadwick Street	B2 C2	Cranbourn Street	C2 C3
Albemarle Street	B3	Brook Street	A2	Crosby Row	G4
Aldermanbury	G2	Brook's Mews	A2	Cursitor Street	E2
Aldersgate Street	F1	Bruton Lane	B3	Curzon Street	A3
Aldford Street	A3	Bruton Place	A3 B3	Davies Street	A2 A3
Aldwych	D2	Bruton Street	B3	Dean Street	C2
Alfred Place	C1	Buckingham Gate	B4	Dering Street	A2
Archer Street	C2	Bunhill Row	G1	Devonshire Mews South	A1
Argyll Street	B2	Bury Street	B3	Devonshire Mews West	A1
Arlington Street	B3	Cannon Street	G2	Devonshire Street	A1
Arundel Street	E2	Capper Street	B1 C1	Dodson Street	E4 F4
Balderton Street	A2	Carey Street	E2	Doughty Street	D1
Bayley Street	C1	Carlton Gardens	C3	Dover Street	B3
Baylis Road	E4	Carlton House Terrace	C3	Down Street	A3 A4
Beak Street	B2	Carmelite Street	E2	Downing Street	C4
Bear Lane	F3	Carnaby Street	B2	Drury Lane	D2
Beaumont Street	A1	Carter Lane	F2	Drury Lane	D2
Bedford Ave	C1	Catherine Place	B4	Duke Street	A2 B3
Bedford Place	D1	Cavendish Square	A2 B2	D'arblay Street	B2 C2
Bedford Row	D1 E1	Caxton Street	B4 C4	Earnshaw Street	C2
Bedford Square	C1	Chancery Lane	E2	Eastcastle Street	B2
Bedford Street	D3	Chandos Place	D3	Elm Street	E1
Bedfordbury	D3	Chapel Street	A4	Emerson Street	G3
Belgrave Square	A4	Charing Cross Road	C2	Endell Street	C2 D2
Belvedere Road	D4 E3	Charles Street	A3	Ewer Street	F3 F4
Berkeley Square	A3 B3	Charlotte Street	B1	Eyre Street Hill	E1
Berkeley Street	B3	Charterhouse Square	F1	Fann Street	F1 G1
Bernard Street	D1	Charterhouse Street	E1 F1	Farm Street	A3
Berners Street	B1 B2	Chenies Street	C1	Farringdon New Bridge	F2
Berwick Street	B2 C2	Chesterfield Hill	A3	Farringdon Road	E1
Binney Street	A2	Chicheley Street	D4 E4	Fetter Lane	E2
Birdcage Walk	B4 C4	Chiswell Street	G1	Fitzroy Square	B1
Blackfriars Bridge	F2 F3	City Road	G1	Fitzroy Street	B1
Blackfriars Road	F3 F4	Clarges Street	B3	Fleet Street	E2
Bloomsbury Square	D1	Clerkenwell Road	E1 F1	Floral Street	D2
Bloomsbury Street	C1	Cleveland Row	B3 B4	Foley Street	B1
Bloomsbury Way	D1 D2	Cleveland Street	B1	Fortune Street	G1
Bolton Street	B3	Clifford Street	B3	Foster Lane	G2
Bonhill Street	G1	Clipstone Mews	B1	Frith Street	C2
Borgough Road	F4	Clipstone Street	B1	Furnival Street	E1 E2
Borough High Street	G3 G4	Cockspur Street	C3	George Street	A2
Bourdon Street	A3 B2	Coleman Street	G2	Gilbert Street	A2
Bouverie St Temple Avenue	E2	Conduit Street	B2	Giltspur Street	F1 F2
Bow Street	D2	Consert Hall Approach	E3	Gloucester Terrace	D2 E2
Bread Street	G2	Constitution Hill	A4 B4	Golden Lane	G1
Bream's Buildings	E2	Coptic Street	C1 C2	Goodge Street	B1 C1
Brewer Street	B3 C2	Coral Street	E4	Gordon Square	C1
Brick Street	A3	Cornwall Road	E3	Gosfield Street	B1
Bridle Lane	B2	Cowcross Street	F1	Goswell Road	F1

Gower Street	C1	Hosier Lane	F1	Marylebone Road	A1
Grafton Street	B3	House Street	B1	Marylebone Street	A1
Grafton Way	B1	Howland Street	B1	Meard Street	C2
Gray's Inn Road	E1	Huntley Street	C1	Milk Street	G2
Great Chapel Street	C2	James Street	A2	Millman Street	D1
Great Dover Street	G4	Jermyn Street	B3 C3	Milton Street	G1
Great George Street	C4	John Carpenter Street	E2 F2	Mint Street	G4
Great Guildford Street	F3 G4	John Street	D1 E1	Monmouth Street	C2
Great James Street	D1	Kean Street	D2	Montague Place	C1
Great Marlborough Street	B2	Keeley Street	D2	Montague Street	C1 D1
Great Portland Street	B1 B2	Kemble Street	D2	Moorgate	G1 G2
Great Queen	D2	Keppel Street	C1	Morley Street	E4
Great Russell Street	C2	King Charles Street	C4	Mortimer Street	B1 B2
Great Scotland Yard	C3 D3	King Edward Street	F1 F2	Mount Row	A3
Great Suffolk Street	F4	King Street	B3	Mount Street	A3
Great Titchfield Street	B1	King William St	G2	Museum Street	C1 D2
Greek Street	C2	Kingly Street	B2	Neal Street	C2
Gresham Street	F2 G2	Kingsway	D2	New Bond Street	A2 B2
Greville Street	E1	Kirby Street	E1	New Cavendish Street	A1 B1
Grosvenor Crescent	A4	Lambeth Place Road	D4	New Compton Street	C2
Grosvenor Hill	A3 B2	Lancaster Place	D2 D3	New Fetter Lane	E1 E2
Grosvenor Place	A4	Langham Place	B1 B2	New Oxford Street	C2 D2
Grosvenor Square	A2	Langham Street	B1	New Row	C3 D2
Grosvenor Street	A2 A3	Lavindton Street	F3	Newgate Street	F2
Guilford Street	D1	Laystall Street	E1	Newman Street	B1 C2
Gutter Lane	G2	Leather Lane	E1	Noel Street	B2 C2
Half Moon Street	A3 B3	Lexington Street	B2 C2	North Audley Street	A2
Halkin Street	A4	Lincoln's Inn Fields	D2 E2	Northington Street	D1 E1
Hamilton Place	A4	Litchfield Street	C2	Northumberland Avenue	C3 D3
Hanover Square	B2	Little Britain	F1	Nottingham Place	A1
Hanson Street	B1	Loman Street	F4	Old Bond Street	B3
Harley Place	A1	London Bridge	G3	Old Compton	C2
Harley Street	A1	London Wall	G1	Old Jewry	G2
Harper Road	G4	Long Acre	D2	Old Park Lane	A4
Hatfields	E3	Long Lane	G4	Orange Street	C3
Hatton Garden	E1	Lower Marsh	E4	Orchard Street	A2
Haymarket	C3	Ludgate Hill	F2	Oxford Street	A2 B2
Hay's Mews	A3	Luxborough Street	A1	Paddington Street	A1
Headfort Place	A4	Malet Street	C1	Pall Mall	C3
Henrietta Place	A2	Manchester Street	A1 A2	Paris Garden	F3
Hertford Street	A3	Manciple Street	G4	Park Crescent	A1 B1
High Holborn	D1 D2 E1	Maple Street	B1	Park Lane	A3
Hill Street	A3	Marchmont Street	D1	Park Place	B3
Holborn Viaduct	E1 F2	Margaret Street	B2	Park Street	A3
Holland Street	F3	Marlborough Road	B3 B4	Park Street	G3
Holles Street	B2	Marshall Street	B2	Parker Street	D2
Hopton Street	F3	Marshalsea Road	G4	Parliament Square	C4 D4
Horse Guards Avenue	D3 D4	Marylebone High Street	A1 A2	Parliament Street	D4
Horse Guards Road	C3 C4	Marylebone Lane	A1 A2	Pearman Street	E4

Percy Street	C1	Southwark Street	F3	University Street	B1 C1
Peter Street	C2	Spur Road	B4	Upper Ground	E3
Peter's Lane	F1	St Andrew Street	E1 E2	Upper Marsh	E4
Petty France	B4 C4	St Ann's Street	C4	Upper Thames Street	G2 G3
Phoneix Place	E1	St Bride Street	F2	Vere Street	A2
Piccadilly	A4 B3	St Cross Street	E1	Victoria Embankment	D3 D4 E2 F2
Pilgrimage Street	G4	St Georges Street	B2	Victoria Street	C4
Portland Place	A1 B1	St George's Circus	F4	Vigo Street	B3
Portpool Lane	E1	St Giles High Street	C2	Viktoria Embankment	D3
Princes Street	B2	St James's Place	B3	Villiers Street	D3
Queen Anne Street	A1 A2	St James's Rose & crown Yard	B3	Walbrook Court	G2
Queen Street	G2	St James's Square	B3 C3	Wardour Street	C2
Queen Victoria Street	F2 G2	St James's Street	B3	Warwick Street	B2 B3
Ramillies Place	B2	St John Street	F1	Waterloo Bridge	D3 E3
Rathbone Street	B1 C1	St John's Square	F1	Waterloo Road	E3 E4
Ray Street	E1	St Margaret Street	D4	Watling Street	G2
Redcross Way	G4	St Margaret Street	D4	Waverton Street	A3
Reeves Mews	A3	St Martin's Lane	C2 C3	Webber Street	E4 F4
Regent Street	B2 B3 C3	St Martin's Le Grand	F2	Welbeck Street	A1 A2
Rennie Street	F3	St Martin's Place	C3	Wells Street	B2
Richmond Terrace	D4	St Paul's Churchyard	F2	West Smithfield Long Lane	F1
Ridgmount Street	C1	Stamford Street	E3	West Street	C2
Ropemaker Street	G1	Stanhope Gate	A3	Westminster Bridge	D4
Rupert Street	C2	Stones End Street	G4	Westminster Bridge Road	E4
Russell Square	C1	Store Street	C1	Westmoreland Street	A1
Russell Street	D2	Strand	D2 D3 E2	Weymouth Street	A1
Saffron Hill	E1	Stratton Street	B3	White Lion Hill	F2
Sandland Street	D1 E1	Sumner Street	F3 G3	Whitecross Street	G1
Savile Row	B2 B3	Sutton Row	C2	Whitehall	C3 C4
Savoy Place	D3	Tabard Street	G4	Whitehall Place	C3 D3
Shaftesbury Avenue	C2	Tavistock Street	D2	Whitehorse Street	A3 B3
Shelton Street	C2 D2	Temple Place	E2	Whitfield Street	B1 C1
Shoe Lane	E2	The Mall	C4	Wigmore Street	A2
Short's Gardens	C2 D2	Theobald's Road	D1	Wild Court	D2
Silk Street	G1	Thrale Street	G3	Wild Street	D2
Snow Hill	F1 F2	Torrington Place	C1	William IV Street	C3 D3
Soho Square	C2	Torrington Square	C1	Wimpole Street	A1
South Audley Street	A3	Tothill Street	C4	Windmill Street	C1
South Molton Street	A2	Tottenham Court Road	B1 C1	Wood Street	G2
South Street	A3	Tower Street	C2	York Bridge	A1
Southampton Place	D1	Trafalgar Square	C3	York Buildings	D3
Southampton Row	D1	Tudor Street	E2 F2	York Road	E4
Southwark Bridge	G3	Ufford Street	E4 F4	Zoar Street	F3
Southwark Bridge Road	F4 G3	Union Street	E4 F4 G4		