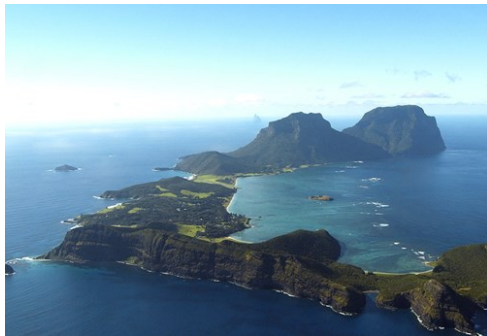




Lord Howe Island

in collaboration with Destination NSW for Lord Howe Island

Photo: Destination NSW for Lord Howe Island



Destination NSW for Lord Howe Island

Lord Howe Island is a World Heritage-listed paradise where at any time you'll be one of only 400 visitors. A holiday on this exquisite subtropical island is relaxing and unhurried; getting around by bike or on foot is the way to go and there are plenty of activities to discover. Explore its beautiful beaches, lagoons, coral reefs and rainforest areas to discover a world of immense natural beauty.



Destination NSW for Lord Howe Island



Destination NSW for Lord Howe Island

QUIZ

*What Type of Traveller
Are You Based on
Your Travel IQ?*

TAKE THE QUIZ

Top 5



Lord Howe Island Golf
Lord Howe is home to one of the most picturesque golf courses in Australia, ...



Hand-feed fish at Neds Beach
Neds Beach Sanctuary Zone offers a unique opportunity to view an amazing div...



Snorkelling
See up to 90 colourful coral species and 500 types of fish while snorkelling...



Diving
Lord Howe Island Marine Park brings together a mix of tropical, subtropical ...



Fishing
Five major ocean currents intersect at Lord Howe Island and the waters are t...



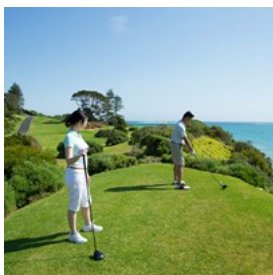
TOP THINGS TO DO



Destination NSW for Lord Howe Island

Lord Howe Island is a nature lover's paradise. Go swimming, snorkelling or diving in the crystal clear waters of the most southern coral barrier reef in the world or marvel at magnificent landscapes and ocean views on an excellent range of walking trails and hikes.

Lord Howe Island Golf



Lord Howe is home to one of the most picturesque golf courses in Australia, which overlooks the towering Mt. Lidgbird and Mt.

Gower. The nine-hole course meanders through the lushly vegetated Kentia Palm forest and out into the gently undulating open fairways along the ocean foreshore - providing the golfer with many challenges along the way.

Photo: Trevor King - Destination NSW

Address: Lord Howe Island NSW 2898

Phone: +61 2 6563 2179

Internet: <https://www.visitnsw.com/destinations/lord-howe-island/lord-howe-island-area/lord-howe-island/attractions/lord-howe-island-golf>

Hand-feed fish at Neds Beach



Neds Beach Sanctuary Zone offers a unique opportunity to view an amazing diversity of coral, fish and other marine life close to shore.

And you can hand-feed fish in this haven. Be part of a favourite Lord Howe ritual and help feed eager mullet, wrasse, garfish, silver drummer, spangled emperor and metre-long kingfish.

Photo: Ned's Beach

Internet: www.visitnsw.com/destinations/lord-howe-island/lord-howe-island-area/lord-howe-island/attractions/neds-beach

Snorkelling



See up to 90 colourful coral species and 500 types of fish while snorkelling in the crystal clear waters of Lord Howe Island at Neds

Beach, Lagoon Beach, Old Settlement Beach, Erscott's Hole and Blinky Beach.

Photo: Grahame McConnell - Destination NSW

Internet:

www.visitnsw.com/destinations/lord-howe-island/water-sports

Diving



Lord Howe Island Marine Park brings together a mix of tropical, subtropical and temperate marine life found nowhere else on

Earth, making it one of the world's best diving sites. Discover the numerous atolls, pinnacles and reefs of the Admiralty Islands. Explore the basalt caves and reefs below Balls Pyramid, the world's tallest sea stack. The waters are home to

huge schools of violet sweep, rainbow runners, marlin, dolphins, turtles and rare species such as Spanish dancers, double-headed wrasse and Galapagos whalers.

Photo: Grahame McConnell - Destination NSW

Internet:

www.visitnsw.com/destinations/lord-howe-island/water-sports

Fishing



Five major ocean currents intersect at Lord Howe Island and the waters are teeming with tropical, subtropical and temperate species of fish.

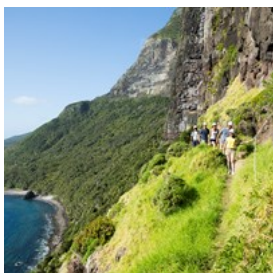
The island's shallow lagoons contain trevally, silver drummer, bluefish and the double-header wrasse. Join a fishing boat adventure charter for the chance to hook Lord Howe kingfish, silver trevally, tuna, wahoo, cod species, marlin and more.

Photo: Trevor King - Trevor King

Internet:

www.visitnsw.com/destinations/lord-howe-island/fishing

Bushwalking



Lord Howe Island is great for walking and hiking. Although only 11 km long and 2 km wide, the island has many bushwalking options for a wide range

of abilities. The most challenging is the 14 km Mt Gower hike, rated as one of the best day treks in the world. An experienced guide will lead you through this 875-metre ascent, an eight-hour return journey that requires ropes in some sections.

Photo: Trevor King - Destination NSW

Internet:

www.visitnsw.com/destinations/lord-howe-island/nature

Birdwatching



Lord Howe Island is one of Australia's premier birdwatching destinations, with 14 species of seabirds breeding here in their

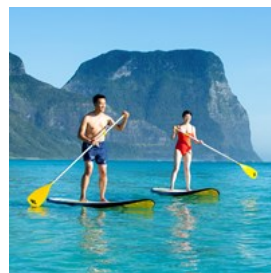
hundreds of thousands. The island also has more than 130 permanent and migratory bird species, including the unique Lord Howe Island woodhen, vast flocks of migrating shearwaters and rare providence petrels.

Photo: Trevor King - Destination NSW

Internet:

www.visitnsw.com/destinations/lord-howe-island/nature

Stand-up paddleboarding



One of the best ways to enjoy the crystal clear waters of Lord Howe Island is from a stand-up paddleboard. Rent a board at Neds Beach or

Lagoon Beach and look out for wrasses, turtles and myriads of coral as you glide through the calm waters.

Photo: Trevor King - Destination NSW

Internet: www.visitnsw.com/destinations/lord-howe-island/lord-howe-island-area/lord-howe-island/hire/pro-dive-lord-howe-island-hire-centre

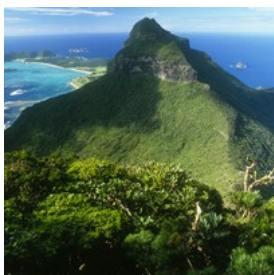
THE ISLAND



Destination NSW for Lord Howe Island

Lord Howe Island is a remarkable example of an island ecosystem developed from submarine volcanic activity nearly seven million years ago. The island's isolation and its varied landscape of mountains, valleys, hills, lowlands and sea-cliffs have resulted in diverse habitats supporting many distinctive flora and fauna groups including 241 species of indigenous plants, 207 bird species, 500 species of fish and 90 coral species. The Lord Howe Island Group was listed as a UNESCO World Heritage site in 1982.

Lord Howe Island



You'll feel special on Lord Howe Island, a beautiful UNESCO World Heritage paradise 700km northeast of Sydney. Only 400 visitors are allowed on the treasured island at any one time to experience the unique natural attractions, from the vivid coral reef to the famous twin peaks.

Photo: Ian Hutton - Destination NSW
Address: Lord Howe Island NSW 2898
Internet:

<https://www.visitnsw.com/destinations/lord-howe-island>

DO AND SEE



Destination NSW for Lord Howe Island

Relax on white sandy beaches, discover the world's tallest sea stack, and tackle one of Australia's best day trek trails climbing Mount Gower, Lord Howe Island's tallest mountain, in this World Heritage island paradise. There's even a golf course.

Lord Howe Island Marine Park



Lord Howe Island Marine Park is internationally significant, with the world's southernmost coral reef and the only fringing coral reef lagoon

in NSW. The convergence of warm and cool waters results in a unique mix of temperate and tropical species, many of which can be seen in clear waters close to shore. Visitors can swim, dive, snorkel and kayak amongst colourful marine life, enjoy fishing from shore or on a charter boat and simply relax on pristine sandy beaches.

Located about 700 kilometres northeast of Sydney, Lord Howe Island Marine Park is a multiple-use marine park that caters for many different recreational and commercial activities. The park protects marine biodiversity and areas of ecological and cultural importance, and provides for sustainable recreational and commercial activities. Visitors from around the

world visit the marine park to dive, swim, snorkel, fish and holiday.

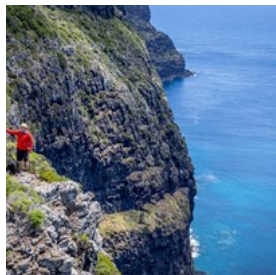
Photo: Lord Howe Island Marine Park

Address: 2 Bowker Avenue, Lord Howe Island NSW 2898

Phone: +61 2 6563 2359

Internet: <https://www.visitnsw.com/destinations/lord-howe-island/lord-howe-island-area/lord-howe-island/attractions/lord-howe-island-marine-park>

Seven Peaks Walk at Pinetrees Lord Howe Island



The Seven Peaks Walk is Lord Howe's premier five day guided adventure that takes you from pristine beaches and exposed coral platforms

to the delicate mist forests on Mt Gower. Along the way, you'll see sheltered swimming coves, subtropical palm forests, freshwater creeks, rugged sea cliffs and volcanic peaks. Some sections of the walk, such as the Lower Road on Mt Lidgbird, wind along exposed narrow ledges (protected by ropes, of course) across a 300 vertical metre cliff. Other sections of the walk take you deep into Jurassic Park style banyan forests with the only rookeries of Providence petrels in the world. When you yell, the curious birds land at your feet, almost hypnotised. It's an incredible experience.

The Seven Peaks Walk is a member of the Great Walks of Australia - a small collection of Australia's finest luxury walks.

Photo: Luke Hanson

Address: Pinetrees Lodge, Lagoon Road, Lord Howe Island NSW 2898

Phone: +61 2 9262 6585

Internet: <https://www.visitnsw.com/destinations/lord-howe-island/lord-howe-island-area/lord-howe-island/events/seven-peaks-walk-pinetrees-lord-howe-island>

Admiralty Islands



Just 15 minutes by boat from Lord Howe Island is an intriguing group of volcanic formations. With some of Australia's best dive spots, eager divers

flock to the crystal clear waters in this area. Choose from around 25 dive sites scattered around the atolls.

Photo: Admiralty Islands

Internet: www.visitnsw.com/destinations/lord-howe-island/lord-howe-island-area/lord-howe-island/attractions/admiralty-islands

Balls Pyramid



Explore the basalt caves and reefs below the world's tallest sea stack, with a height of 551 metres. Balls Pyramid is home to huge schools of violet sweep, rainbow runners, marlin, dolphins, turtles and rare species such as Spanish dancers, double-headed wrasse and Galapagos whalers.

Photo: Balls Pyramid

Internet: www.visitnsw.com/destinations/lord-howe-island/lord-howe-island-area/lord-howe-island/attractions/balls-pyramid

Blinky Beach



Blinky Beach, on the eastern side of Lord Howe Island, is a great spot for a refreshing swim, surf or a relaxing snorkel. It's the most

popular place on the island to catch a clean surf break on some of Australia's least crowded waves. The fine sands are also ideal for beach fishing.

Photo: Blinky Beach

Internet: www.visitnsw.com/destinations/lord-howe-island/lord-howe-island-area/lord-howe-island/attractions/blinky-beach

Lord Howe Island Museum



The museum has a range of innovative displays on the island's World Heritage environment, community and history dating back to 1788, when the British naval vessel HMS Supply was believed to have discovered the island.

Photo: Trevor King - Destination NSW

Address: Corner of Lagoon & Middle Beach Roads, Lord Howe Island NSW 2898

Phone: +61 2 6563 2114 or 1800 240 937

Internet: www.visitnsw.com/destinations/lord-howe-island/lord-howe-island-area/lord-howe-island/attractions/lord-howe-island-museum-and-visitor-centre

Malabar Hill



Malabar Hill offers sweeping panoramic views of Lord Howe Island encompassing the towering volcanic peaks of Mount Lidgbird and Mount Gower. Its cliffs are the world's largest nesting ground for red-tailed tropicbirds. The best time to see the birds' airborne courting rituals from Malabar is between September and May.

Photo: Malabar Hill Lord Howe Island

Internet: www.visitnsw.com/destinations/lord-howe-island/lord-howe-island-area/lord-howe-island/attractions/malabar-hill

Mount Gower



Standing tall at 875 metres, Mount Gower is Lord Howe's highest mountain. Rated as one of Australia's best day walks, the Mount Gower hike is a challenging eight-hour return trek. Walkers traverse about 14 km across the mountain's rugged terrain, encountering some of the island's rarest plants and wildlife along the way.

Photo: Mount Gower

Internet: www.visitnsw.com/destinations/lord-howe-island/lord-howe-island-area/lord-howe-island/attractions/mount-gower

North Bay



A secluded beach, North Bay is accessible only by foot or water. Visitors can admire migratory sea birds and take short walks to Mount Eliza, Old Gulch and Herring Pools from the bay, or simply relax on its white sands. Amazing snorkelling opportunities can also be experienced here, with a large variety of fish, turtles and colourful corals.

Photo: North Bay

Internet: www.visitnsw.com/destinations/lord-howe-island/lord-howe-island-area/lord-howe-island/attractions/north-bay

Old Settlement Beach



Weather-sculpted sandstone rocks are dotted across the tiny and secluded Old Settlement Beach. Situated to the island's north, the beach is a great place to swim, relax and admire

impressive mountain views. And enjoy a picnic.

Photo: Old Settlement Beach

Internet: www.visitnsw.com/destinations/lord-howe-island/lord-howe-island-area/lord-howe-island/attractions/old-settlement-beach

Valley of the Shadows



The unique Valley of the Shadows trail takes you through remarkable banyan tree forests with aerial roots that give the impression trees are

“walking” through the landscape.

Photo: The Valley of the Shadows

Internet: <https://www.visitnsw.com/destinations/lord-howe-island/lord-howe-island-area/lord-howe-island/attractions/the-valley-the-shadows>

EVENTS



Destination NSW for Lord Howe Island

Discover a wide range of events on Lord Howe Island from community markets and an art trail, to birdwatching, a music festival and wellness weeks.

Ocean Swim Week with Trevor Hendy: Pinetrees Lord Howe Island



If you're sick of the black line in the pool or the opaque water at suburban beaches, then please join one of the Lord Howe Island Ocean

Swim Weeks.

Each day, you'll swim 1.5 to two kilometres around the Lord Howe Island coastline and experience the beauty of a World Heritage marine environment. Some days you will swim over vibrant coral on the outer reef of the lagoon, while other days you will swim under 200 vertical metre cliffs or along some of the most perfect beaches in the world.

At your side will be the former World and Australian Ironman Champion, Trevor Hendy. Trevor was made a Member of the Order of Australia in 1996 for his services to surf lifesaving, and was inducted into the Sport Australia Hall of Fame in 2000.

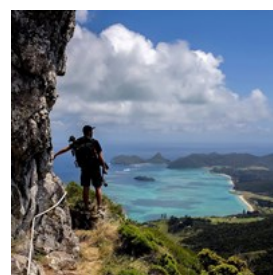
Photo: Luke Hanson

Address: Pinetrees Lodge, Lagoon Road, Lord Howe Island NSW 2898

Phone: +61 2 9262 6585

Internet: <https://www.visitnsw.com/destinations/lord-howe-island/lord-howe-island-area/lord-howe-island/events/ocean-swim-week-trevor-hendy-pinetrees-lord-howe-island>

Walking and Photography Week at Pinetrees Lord Howe Island



Lord Howe Island is the best walking destination in Australia, and one of the best in the world. Its World Heritage listing is for scenic beauty,

biodiversity and rare flora and fauna, and there's a large variety of terrain in a small area. You can explore the intertidal zone at low tide and

discover amazing life forms, you can walk along user friendly graded tracks to swimming coves and lookouts. Climb small hills and capture vistas that feature in David Attenborough documentaries, and climb big mountains. Their Walking and Photography Weeks combine the skills of local guides and photographers to help you discover and capture the Island's stunning landscapes and life forms. Each guide can help you capture better images (and help you win the daily 'best photo' competition).

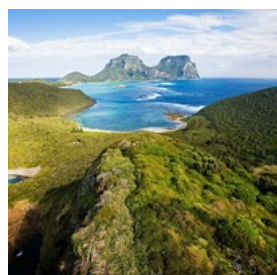
Photo: Luke Hanson

Address: Pinetrees Lodge, Lagoon Road, Lord Howe Island NSW 2898

Phone: +61 2 9262 6585

Internet: <https://www.visitnsw.com/destinations/lord-howe-island/lord-howe-island-area/lord-howe-island/events/walking-and-photography-week-pinetrees-lord-howe-island>

Community Markets



The community spirit is alive on Lord Howe Island and it shines at the monthly local markets. Purchase a locally made Lord Howe Island

pandanus basket and browse through other art and handicraft, as well as a great range of local produce. Kids can enjoy having their faces painted.

Photo: Ken Lees - Lord Howe Island Tourism

Address: Central School, Lagoon Road, Lord Howe Island, NSW 2898

Opening hours: Markets held on the second Sunday of every month.

Internet: www.visitnsw.com/events/the-lord-howe-island-community-markets

Lord Howe Island Bird Week



Lord Howe Island is Australia's premier birdwatching destination, with 14 species of seabirds breeding here in the hundreds of thousands. The island is also home to more than 130 permanent and migratory bird species. Enjoy guided walks to sea bird colonies, bird photography sessions, museum displays, and lectures discussing current research.

Photo: Lord Howe Island Bird Week

Internet:

www.visitnsw.com/events/lord-howe-island-bird-week

Lord Howe Island Golf Open



Held each year in early November, the Lord Howe Island Golf Open week offers more than \$A5,000 in prizes. Players of all standards and handicaps are welcome.

Photo: Lord Howe Island Golf Open

Address: Lagoon Road, Lord Howe Island, NSW 2898

Phone: +61 2 6563 2179

Internet: <https://www.visitnsw.com/destinations/lord-howe-island/lord-howe-island-area/lord-howe-island/events/30th-lord-howe-island-golf-open-2018>

More Info: Players must have a current Golf Australia handicap through the Golf Link system or overseas equivalent.

Pinetrees Lodge Wellness Weeks



Held various times throughout the year, these wellness weeks offer a daily program of yoga, spa treatments, massage, aerobic fitness,

wholefood cooking classes and organic gardening classes. Disconnect from the outside world and rejuvenate in a World Heritage paradise.

Photo: Luke Hanson

Address: Lagoon Road, Lord Howe Island, NSW 2898

Phone: +61 2 6563 2177

Internet: <https://www.visitnsw.com/destinations/lord-howe-island/lord-howe-island-area/lord-howe-island/events/wellness-week-charlotte-dodson-pinetrees-lord-howe-island>

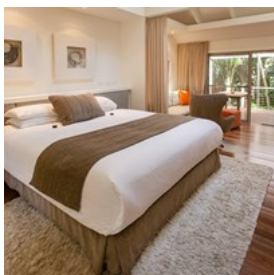
ACCOMMODATION



Destination NSW for Lord Howe Island

Lord Howe offers a great range of accommodation styles, from bungalows and self-catered apartments to luxurious lodges and retreats, all nestled among kentia palms, banyan forests and beautiful gardens.

Arajilla Retreat



This luxury retreat and spa is just behind Old Settlement Beach where the turtles come to swim. The Arajilla Spa & Wellness Centre uses ancient Indian Ayurvedic techniques to offer relaxation and healing through its extensive spa menu and wellness program.

Photo: Arajilla Retreat

Address: Old Settlement Beach, Lord Howe Island, NSW 2898

Phone: +61 2 6583 2622 or 1800 063 928

Internet: www.visitnsw.com/destinations/lord-howe-island/lord-howe-island-area/lord-howe-island/accommodation/arajilla-retreat

Beachcomber Lodge



Beachcomber Lodge is one of the original restored island homesteads, secluded among tropical gardens. Splashes of colour from fragrant frangipanis and hibiscus surround the private self-contained apartments and family cottage.

Photo: Beachcomber Lodge

Address: Anderson Road, Lord Howe Island, NSW 2898

Phone: +61 2 6563 2032

Internet: www.visitnsw.com/destinations/lord-howe-island/lord-howe-island-area/lord-howe-island/accommodation/beachcomber-lodge

Blue Lagoon Lodge



Blue Lagoon Lodge is set in subtropical gardens just 150 metres away from the island's lagoon. Features include bike hire, an all-weather tennis court and individual balconies with shade.

Photo: Blue Lagoon Lodge

Address: 10 Neds Beach Road, Lord Howe Island, NSW 2898

Phone: +61 2 6563 2006

Internet: www.visitnsw.com/destinations/lord-howe-island/lord-howe-island-area/lord-howe-island/accommodation/blue-lagoon-lodge

Capella Lodge



Located on the secluded southern end of Lord Howe Island, Capella commands spectacular ocean, lagoon and mountain views. Hosting no more than 20 guests, this premium, luxury retreat attracts discerning guests seeking a stylish and sophisticated escape.

Photo: Rhiannon Taylor - Capella Lodge

Address: Lagoon Road, Lord Howe Island, NSW 2898

Phone: +61 2 9918 4355

Internet: www.visitnsw.com/destinations/lord-howe-island/lord-howe-island-area/lord-howe-island/accommodation/capella-lodge

Earls Anchorage



Earls Anchorage offers a tranquil, private and central location with convenient access to the main beaches on either side of the island and close proximity to many scenic walks. Each self-contained bungalow features a nautical theme with handcrafted furniture by renowned Tasmanian wooden boat builder Ned Trewartha.

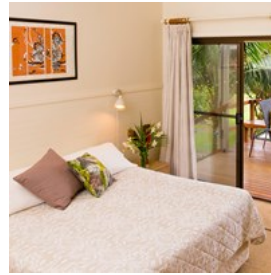
Photo: Earl's Anchorage

Address: Anderson Road, Lord Howe Island, NSW 2898

Phone: +61 2 6563 2029

Internet: www.visitnsw.com/destinations/lord-howe-island/lord-howe-island-area/lord-howe-island/accommodation/earls-anchorage

Ebbtide Apartments



It's just a short walk through the rainforest to Neds Beach from this secluded north-east facing property set in a hectare of beautiful subtropical gardens. Guest facilities include private decks, barbecue areas and a library.

Photo: Ebbtide Apartments

Address: Mutton Bird Drive, Lord Howe Island, NSW 2898

Phone: +61 2 6563 2023

Internet: www.visitnsw.com/destinations/lord-howe-island/lord-howe-island-area/lord-howe-island/accommodation/ebbtide-apartments

Hideaway Apartments



A four-bedroom secluded cottage and five spacious apartments situated in tranquil gardens among a forest of kentia palms. Hideaway Apartments provide kitchen facilities for self-catering and are centrally located to shops, restaurants, beaches and walking tracks.

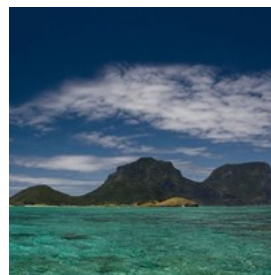
Photo: Hideaway Apartments

Address: Middle Beach Road, Lord Howe Island, NSW 2898

Phone: +61 2 6563 2054

Internet: www.visitnsw.com/destinations/lord-howe-island/lord-howe-island-area/lord-howe-island/accommodation/hideaway-apartments

Howeana Apartments



Enjoy classic beach house holiday living just metres from beautiful Neds Beach. Two fully self-contained apartments offer quality furnishings and appliances, sundecks, gas barbecues and

outdoor settings. The apartments can be booked individually for a couple's escape, or together for families and groups of friends.

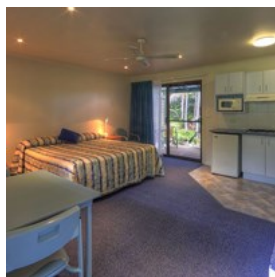
Photo: Howeana Apartments

Address: Neds Beach Road, Lord Howe Island, NSW 2898

Phone: +61 2 6563 2322

Internet: www.visitnsw.com/destinations/lord-howe-island/lord-howe-island-area/lord-howe-island/accommodation/howeana-apartments

Leanda Lei Apartments



Leanda Lei Apartments are ideally located opposite the main grocery and souvenir store, within 400 metres of Lagoon Beach and easy walking distance to most restaurants and the bowling club.

Photo: Leanda Lei Apartments

Address: Middle Beach Road, Lord Howe Island, NSW 2898

Phone: +61 2 6563 2195

Internet: www.visitnsw.com/destinations/lord-howe-island/lord-howe-island-area/lord-howe-island/accommodation/leanda-lei-apartments

Lorhiti Apartments



Fragrant frangipani and hibiscus blooms colour the lush tropical gardens that surround these private self-contained one-bedroom apartments.

The crystal clear waters of Neds Beach are accessible via a short private track through magnificent banyan and palm groves.

Photo: Oli Ayo - Lorhiti Apartments

Address: 78 Anderson Road, Lord Howe Island, NSW 2898

Phone: +61 7 3366 8000

Internet: www.visitnsw.com/destinations/lord-howe-island/lord-howe-island-area/lord-howe-island/accommodation/lorhiti-apartments

partments

Milky Way Villas



Enjoy a complimentary food hamper upon arrival at Milky Way Villas.

Nestled in the middle of a palm and banyan grove, Old Settlement Beach is

less than a minute from your front door. All units are fully self-contained with separate living and dining, bedroom, en suite and fully-equipped kitchens.

Photo: Milky Way Villas

Address: Old Settlement Beach, Lord Howe Island, NSW 2898

Phone: +61 2 6563 2012

Internet: www.visitnsw.com/destinations/lord-howe-island/lord-howe-island-area/lord-howe-island/accommodation/milky-way-villas

Ocean View Apartments



Set amid subtropical foliage of kentia palms and ferns, these apartments are situated off the main road but close to many island

facilities. Features include a saltwater swimming pool, tennis court, library and covered barbecues. Guests also enjoy priority bookings on the fishing and sightseeing cruiser MV Carina.

Photo: Ocean View Apartments

Address: Ocean View Drive, Lord Howe Island, NSW 2898

Phone: +61 2 6563 2041

Internet: www.visitnsw.com/destinations/lord-howe-island/lord-howe-island-area/lord-howe-island/accommodation/ocean-view-apartments

Pinetrees Lodge



Enjoy Pinetrees Lodge's beautiful waterfront location on Lagoon Beach. Enjoy exceptional meals, personalised service, spa treatments, comfortable accommodation and a beautiful waterfront location on Lagoon Beach. The boatshed is a great place for a cold beer or champagne while watching the sunset.

Photo: Luke Hanson

Address: Lagoon Road, Lord Howe Island, NSW 2898

Phone: +61 2 9262 6585

Internet: <https://www.visitnsw.com/destinations/lord-howe-island/lord-howe-island-area/lord-howe-island/accommodation/pinetrees-lodge>

Somerset Apartments



Somerset is ideally located between Neds Beach and Lagoon Beach on a level area of the Island, allowing easy walking and biking to nearby shops, restaurants and the visitor information centre.

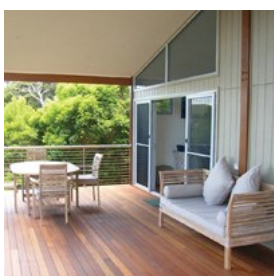
Photo: Somerset Apartments

Address: Neds Beach Road, Lord Howe Island, NSW 2898

Phone: +61 2 6563 2061

Internet: www.visitnsw.com/destinations/lord-howe-island/lord-howe-island-area/lord-howe-island/accommodation/somerset-apartments

The Treehouse



A spacious and contemporary self-contained bungalow, The Treehouse is surrounded by lush, native vegetation and

offers great ocean and mountain views. Ideal for honeymooners or couples looking for rejuvenation and privacy.

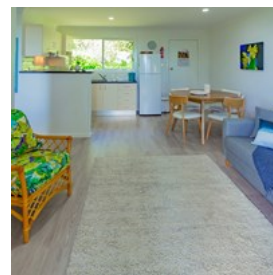
Photo: The Treehouse Bungalow

Address: Middle Beach Road, Lord Howe Island, NSW 2898

Phone: +61 2 6563 2320

Internet: www.visitnsw.com/destinations/lord-howe-island/lord-howe-island-area/lord-howe-island/accommodation/the-treehouse-bungalow

Waimarie



Meaning "peaceful waters" in Maori, Waimarie is situated towards the southern end of the island close to the golf course. These two

apartments offer a tranquil ambience and superb views of Mt Lidgbird and Mt Gower from private verandahs.

Photo: Waimarie Apartments

Address: Lagoon Road, Lord Howe Island, NSW 2898

Phone: +61 2 6563 2057

Internet: www.visitnsw.com/destinations/lord-howe-island/lord-howe-island-area/lord-howe-island/accommodation/waimarie-apartments

TOURIST INFORMATION



Destination NSW for Lord Howe Island

Disconnect from the rest of the world in this beautiful paradise where walking and biking are the best ways to get around the island.

Airport



QantasLink offers year-round scheduled services to Lord Howe Island. Flight time is under two hours, with flights departing from

Sydney on most days, and from Brisbane on weekends.

A seasonal weekly service to the Island is also available direct from Port Macquarie from February to June and September to December.

Photo: Juan Garces

Internet: <https://www.lhib.nsw.gov.au/infrastructure/airport>

Transport



You'll quickly understand why Lord Howe Island does not need public transport. All accommodation properties provide free

airport transfers for arriving and departing guests. Walking is a pleasure on the island as you're never far from shops, restaurants or beaches. There are bicycles and helmets for hire and a limited number of rental cars.

Photo: Pierre-Luc Auclair

Medical



Gower Wilson Memorial Hospital provides health services for residents and visitors to Lord Howe Island. This is the only medical facility on the

island with three inpatient beds that are used for acute admissions. Complex cases are transferred to the mainland.

Consulting and dispensary hours are 9am to 12.30pm Monday to Friday, however, the doctor and nursing staff are on 24-hour call for emergencies.

Photo: Gemma Garner

Address: Lagoon Road, Lord Howe Island, NSW 2898

Phone: +61 2 6563 2000

Limited Telephone and Internet Coverage



Country Code: (+61) Area Code: (02) Many island holidaymakers are delighted that Lord Howe Island is beyond the reach of mobile phone

calls and internet service. Public phones and faxes are available on the island and an internet cafe is available at the visitors centre.

Photo: Jardson Almeida

Phone: For more information call 1800 240 937 (freecall in Australia)

Electricity

220-240 V



Photo: Stirling Tschan

Population

With approximately 350 permanent residents, some of whom are sixth generation, only 400 tourists are allowed on the island at any one time.

Currency

Australian Dollar (AUD) \$1 = 100 cents

There are two banks on the Island: Westpac and Commonwealth. Credit cards are accepted widely but not everywhere. There is an automatic banking teller available for use at all hours at the Lord Howe Island Bowling Club.

Internet

www.visitnsw.com/destinations/lord-howe-island

Newspapers

The Lord Howe Island Signal (published fortnightly)
The Sydney Morning Herald (next afternoon delivery)
The Australian (next afternoon delivery)

Emergency numbers

Fire/Police/Doctor – 000

Tourist information

Lord Howe Island Visitor Centre (located in the Lord Howe Island Museum foyer)
Address: Corner of Lagoon & Middle Beach Road, Lord Howe Island NSW 2898
Phone: +61 2 6563 2114 or free toll 1800 240 937 in Australia.
Hours: 9.30am - 3pm Monday -Friday. 9.30am - 2pm Sunday. Closed Saturday.

www.visitnsw.com/destinations/lord-howe-island/lord-howe-island-area/lord-howe-island/attractions/lord-howe-island-museum-and-visitor-centre