



Manchester

in collaboration with Visit Manchester

Photo: Marketing Manchester



Marketing Manchester

Known as the birthplace of the Industrial Revolution, Manchester is one of the most dynamic and cosmopolitan cities in the UK, with a unique character all of its own. Manchester welcomes visitors with its fine traditions of culture, music, sport and top class events. Its vitality is expressed through its fascinating history, interactive attractions, magnificent architecture and most of all, the spirit of its people - ensuring that there's always something to do in the Greater Manchester region.



Marketing Manchester



Marketing Manchester

QUIZ
*What Type of Traveller
Are You Based on
Your Travel IQ?*

TAKE THE QUIZ

Top 5



Manchester United Musuem a...

The Manchester United Museum & Stadium Tour offers a behind the scenes look ...



Manchester City Football Club

Go behind the scenes at the world's fastest growing football club. Stadiu...



Coronation Street The Tour

ITV have opened their outdoor Coronation Street sets at MediaCityUK to the p...



Sightseeing Manchester

Known throughout the world as the birthplace of the industrial revolution, M...



National Football Museum

Whether you're a die hard football fan, planning a visit with your family or...



THE CITY



Marketing Manchester

Manchester is one of the UK's most dynamic, cosmopolitan and welcoming cities. With its fine traditions of culture, music, sport and top class events, there's something for everyone across the whole Greater Manchester region.

SPORT

From football, to cricket, to cycling as well as a year-round programme of sports events, Manchester is packed with activities and entertainment to keep sports fans amused even when the games finish.

CULTURE

From music and art to theatre and architecture, Manchester's culture is known for its energy and excellence. Both the Whitworth and HOME are settling in since opening in the last few years and we await the arrival of The Factory, due in 2020.

HERITAGE

Birthplace of the computer, the football league and Top of the Pops, Manchester's heritage is rich and diverse. Take in the history at SIM, housed in the world's first passenger railway station, or at Chethams Library, the oldest public library in the English-speaking world.

SHOPPING

Manchester is the shopping capital of the North, offering a range of shopping experiences from high end to high street, from local to independents. Stores available include Patagonia, Fjall Raven, French Connection, Watches of Switzerland, Paul Smith, Colette, Victoria's Secret, Timberland, Chisholm Hunter, Victoria's Secret & Victoria PINK and Chopstix.

FOOD & DRINK

From high-end restaurants and renowned chefs setting up camp here, to independent good value eateries, global cuisine and also locally produced grub on offer, Manchester has cemented itself as a culinary city.

NIGHTLIFE

A visit to Manchester would not be complete without a night out exploring the city's bars, pubs and clubs. Each area of the city boasts its own unique style and collection of places to choose from.

MUSIC

Manchester has music in its soul. Mancunian exports include The Smiths, Take That and Oasis who have contributed some of the most important rock and pop music of all time. Today you can enjoy an array of music from classical to jazz to rock and pop in a wide range of different venues.

COUNTRYSIDE

Greater Manchester has miles of inspiring countryside, crisscrossed by historical waterways and dotted with picturesque towns and fascinating attractions that make for a great day out of the hustle and bustle of the city.

SEE & DO



Marketing Manchester

Manchester is perhaps best known internationally for two things: music and football. Huge musical acts, including The Hollies, The Bee Gees, New Order, Oasis, Simply Red and many more, have hailed from Manchester, and the yearly 'In The City' music festival has launched many to international stardom. Football fans will want to visit the legendary Old Trafford stadium, museum and megastore. But Manchester has a lot more to offer than just music and sports. It is a young and creative city, with outstanding museums, food and nightlife, crisscrossed by canals which give it a unique atmosphere, and one of the greatest pleasures about visiting Manchester is exploring the various districts on foot.

Manchester United Museum and Tour Centre



The Manchester United Museum & Stadium Tour offers a behind the scenes look at the world's most iconic stadium; Old Trafford. Come and sit in the managers seat in the dugout, walk through the players' tunnel towards the hallowed turf and find the seat of your favourite player in the dressing room. Get a feel for life in the Premier League and immerse yourself in an unrivalled story, the greatest football story ever told.

Manchester United welcome groups of all sizes, from all over the world every day to the home of Manchester United, from individuals and families to international group tours, providing the same world class experience to all.

Photo: Manchester United

Address: Sir Matt Busby Way, Old Trafford, Manchester, Greater Manchester, M16 0RA

Public Transport: From: Metrolink (Old Trafford) 5 minute walk. Directions: 5 minutes walk from the stadium along Warwick Road and Sir Matt Busby Way.

Opening hours: The museum is closed on all match days

Phone: +44(0)161 868 8000

Internet: <https://www.visitmanchester.com/things-to-see-and-do/manchester-united-museum-and-tour-centre-p85721>

Manchester City Football Club



Go behind the scenes at the world's fastest growing football club. Stadium and Club Tour On the Stadium and Club Tour, a professional guide will navigate an unforgettable and all-encompassing tour of the club and Etihad Stadium, which captures the very essence of Manchester City.

The tour will showcase the pride, the passion and the heritage of the football Club. It shows how everything that happens on and off the pitch contributes to making Manchester City the Club that it is today.

Visitors can see how it feels to be grilled by the media in the press conference room hot seat, visit the inner sanctum of the City dressing room, and walk down the tunnel imagining the roar of 55,000 supporters cheering on their heroes. Finally, take in the view from new manager Pep Guardiola's seat in the dug-out -

there's the opportunity to experience everything.

Outside of the football season the stadium hosts major national and international football events as well as summer concerts. Stadium tours are available and the club has an excellent museum packed full of football memorabilia.

Photo: Marketing Manchester

Address: Etihad Stadium, Rowsley Street, Manchester,

Greater Manchester, M11 3FF

Phone: +44 (0)161 444 1894

Internet: <https://www.visitmanchester.com/things-to-see-and-do/manchester-city-football-club-stadium-and-club-tour-p320481>

Email: tours@mancity.com

Coronation Street The Tour



ITV have opened their outdoor Coronation Street sets at MediaCityUK to the public, including the world-famous cobbled street. The experience lasts around 80 minutes taking in Coronation Street, Rosamund Street and the newly extended Victoria Street, with plenty of opportunities for photos. Visitors will walk in the footsteps of the famous residents, discover filming secrets and hear stories of their favourite characters.

Coronation Street Set

Recently relocated from Manchester city centre to MediaCityUK, the Coronation Street set has now expanded dramatically to include Victoria Street - an entirely new location that previously only existed in the viewers' imaginations. Months of planning and building has resulted in a fantastic new retail area complete with Costa Coffee, the Co-op, an urban garden and

Weatherfield North Metrolink tram stop.

Visit the Corrie Tour now as there are limited opening dates.

Photo: Coronation Street

Address: The Studios from Dock 10, MediaCityUK, Trafford, Greater Manchester, M50 2EQ

Opening hours: Tours run between 9am - 6pm on selected weekend days only, when cast and crew have downed scripts for the weekend.

Phone: +44 (0)871 222 8223

Tickets: Adults £35.00 per ticket. Children (5-15) £17.50 per ticket. Family (2 + 2) £89.00 per ticket. Under 5s Free

Internet: <https://www.visitmanchester.com/things-to-see-and-do/coronation-street-the-tour-p58161>

Sightseeing Manchester



Known throughout the world as the birthplace of the industrial revolution, Manchester has a proud history in science, politics, music, arts and sport. Discover the city's heritage and how it has grown to be the progressive hub it is today with a 90 minute bus tour.

The 15 stop hop-on hop-off tour has been carefully planned to take you round some of Manchester's key sights including Town Hall Manchester, National Football Museum, Museum of Science and Industry and Manchester United Football Club.

English commentary by Lord of the Rings and Lost actor Dominic Monaghan.

Your ticket is valid for 24 hours from time of purchase if on the bus or from the date chosen if online and you can board any Sightseeing Manchester branded bus during this time. There is one main tour route with recorded

commentary in English. For other languages there is a free app which can be downloaded from the App Store and Google Play.

Photo: Marketing Manchester

Address: Manchester, M2 5HD

Internet: <https://www.visitmanchester.com/things-to-see-and-do/tours-and-sightseeing/tours-and-tour-guides/sightseeing-manchester-p340511>

National Football Museum



Whether you're a die hard football fan, planning a visit with your family or on a weekend break to the great city of Manchester, enjoy a visit to the world's biggest and best football museum.

Delve into the social history and culture of the beautiful game, exploring football's past and present through the museum's extensive collection.

Photo: Marketing Manchester

Address: Urbis Building, Cathedral Gardens Manchester M4 3BG

Opening hours: Mon-Sun 10am-5pm

Phone: +44 161 605 8200

Internet: <https://www.visitmanchester.com/things-to-see-and-do/national-football-museum-p241621>

Email: info@nationalfootballmuseum.com

Play Factor



Play Factor is the UK's leading family entertainment centre.

With facilities that cater for children from 6 months - 16 years old,

Play Factor are the only family entertainment arena in the UK where parents can play with children on age-applicable equipment. Meaning

you can join in the fun with your little adventurers too! Play Factor's state of the art venue houses the largest play frame in the UK along with a host of other unique attractions that are second to none. Based in Manchester next to the intu Trafford Centre, Play Factor provides a complete day out for families shopping in the area and planning to entertain the children.

Photo: Play Factor

Address: Trafford Quays Leisure Village, Trafford Way, Manchester, Lancs, M41 7JA

Opening hours: Monday - Sunday 10:00 - 18:30

Phone: +44 (0)844 824 6030

Internet: <https://www.visitmanchester.com/things-to-see-and-do/play-factor-p242601>

The Crystal Maze Live Experience



In the 90's, The Crystal Maze was one of the UK's favourite television shows. Now it's your turn to be the star of the show. The ultimate team

challenge, in which you and your friends face challenges testing your skill, mental and physical ability across four adventure time zones: Aztec, Industrial, Futuristic and Medieval. For each challenge completed your team will earn a Crystal. The more Crystals you earn, the more time you'll get in the final challenge - The Crystal Dome!

Build a team of 8 of your friends with a variety of skills to take on the challenge of the Maze

ZONES

Guided by your Maze Master you will travel across the 4 zones: Aztec, Industrial, Futuristic and Medieval. Facing a variety of challenges and games along the way.

CRYSTALS

In each Zone individual members of your team will take on 2-3 minute long games of either the Physical, Mental, Skill or Mystery category. For each game successfully completed your time will earn a Crystal.

TICKETS

For each Crystal earned your team will get time in the final challenge - The Crystal Dome. In the Dome your team must work together to catch as many gold tickets as possible as the Dome's fans blow them in the air.

Photo: The Crystal Maze Live Experience

Address: Crystal Maze Studios, Old Granada Studios, Lower Byrom Street, Manchester, M3 3JE

Internet: <https://www.visitmanchester.com/things-to-see-and-do/the-crystal-maze-live-experience-p360731>

Chinatown



Manchester's Chinese district is one of the largest in Europe.

Top-class restaurants nestle side by side with real street food

establishments. You will also find Korean, Thai and Indonesian shops and restaurants here.

Photo: Elzbieta Sekowska / Shutterstock.com

Address: Faulkner Street, Manchester Chinatown, Manchester

Internet: www.manchesterchinatown.org.uk

Email: info@manchesterchinatown.org.uk

Chester Zoo



Chester Zoo is home to over 21,000 endangered and exotic animals based in beautiful, award-winning gardens and is the nearest large

zoo to Manchester. With over 500 different animal species in their 125 acres, visitors are sure to have an adventure discovering and learning about the amazing wildlife.

Conservation and education are at the heart of everything at Chester Zoo. They are committed to providing the highest standards of care for their animals, as well as protecting native and international wildlife. Their team of expert and knowledgeable staff work hard to prevent extinction, and are passionate about connecting visitors to the natural world. Chester Zoo has a variety of tours and hands-on experiences, as well as daily animal talks to guarantee a day full of animal adventure.

Stop for a snack at one of their many restaurants - including their recently refurbished contemporary British pub The Oakfield - cafes and kiosks located throughout the zoo or let the kids run wild in one of the adventure play areas. It's a huge zoo, but there are plenty of options for getting around including the Zoofari Monorail and the Lazy River Boat Trip on Islands. Don't forget to stop in at the gift shop on your way out for a souvenir of your trip.

Photo: Chester Zoo

Address: Chester Zoo, Caughall Road, Upton, Chester, Cheshire, CH2 1LH

Phone: +44 (0)1244 380280

Internet: <https://www.visitmanchester.com/things-to-see-and-do/gateway-to-the-north/explore-the-north/chester-zoo-p3008>

91

City Centre Cruises



Get a slightly different perspective of Manchester on a canal cruise. Flow along the Manchester Canals and see the most important and beautiful sights of the city while enjoying a buffet or drink on board.

Photo: Eviled / Shutterstock.com

Address: Liverpool Road, Castlefield, Manchester

Opening hours: Mon-Fri 10am-5pm

Phone: +44 161 902 0222

Internet: www.citycentrecruises.co.uk

Email: boat@citycentrecruises.co.uk

Ordsall Hall



Ordsall Hall is Salford's 'hidden gem'! Dating back over 600 years, it is one of the region's finest examples of an Elizabethan black and white half-timbered manor-house. Wander back through time soaking up the atmosphere of our fully-furnished Great Hall and Star Chamber Bedroom.

Get the low-down on Tudor lifestyles; maybe reminisce in our Victorian showcase and kitchen; or unearth the wealth of new discoveries to be made in our exciting and informative family events and exhibitions programme. It's all happening at Ordsall Hall!

Photo: Ordsall Hall

Address: Ordsall Lane, Salford M5 3AN

Phone: +44 0161 872 0251

Internet: <https://www.visitmanchester.com/things-to-see-and-do/ordsall-hall-p85481>

Email: ordsall@btopenworld.com

John Rylands Library



For those who set eyes on Deansgate's The John Rylands Library for the first time, 'library' might not be the first word that comes to mind. This masterpiece of Victorian Gothic architecture looks more like a castle or cathedral.

When John Rylands died in 1888, he was one of Manchester's most successful industrialists with a personal fortune of £2.75million. The library was commissioned in 1890 by his wife Henriqueta Rylands in memory of her late husband.

This world class collection includes the oldest known piece of the New Testament, the St John Fragment. Other treasures of the vast, varied collection include magnificent illuminated medieval manuscripts and a 1476 William Caxton edition of Chaucer's Canterbury Tales.

Photo: John Rylands Library

Address: The University of Manchester, 150 Deansgate, Manchester, Greater Manchester, M3 3EH

Public Transport: The easiest way to reach the library from Piccadilly, Oxford Road and Victoria railway stations is via the free Metro-Shuttle buses. The number 1 Metro-Shuttle runs from the forecourt of Piccadilly station every few minutes. Alight on John Dalton Street at stop WX, turn left onto Deansgate and you will see the library in front of you. The number 2 Metro-Shuttle runs from Victoria station every ten minutes. Alight on Deansgate, opposite the library.

Phone: +44 (0)161 306 0555

Internet: <https://www.visitmanchester.com/things-to-see-and-do/the-john-rylands-library-p85841>

Jodrell Bank



science.

A beloved landmark in the Cheshire countryside south of Manchester, Jodrell Bank is a reminder of just how important the city is to the world of

The University of Manchester's impressive radio telescope centre is a key part of the UK's astronomy research, scanning the skies to improve our knowledge on the Universe.

The Jodrell Bank Discovery Centre allows visitors to discover the Universe beside the world famous Lovell Radio Telescope and explore the planet Earth in the beautiful 35 acre tree filled gardens.

Photo: Jodrell Bank

Address: Jodrell Bank, Lower Withington, Macclesfield, Cheshire, SK11 9DL

Phone: +44 (0)1477 571 766

Internet: <https://www.visitmanchester.com/things-to-see-and-do/jodrell-bank-p1621>

East Lancashire Railway



Make the trip from Grandparent to Grandchild on a journey that spans generations on this heritage railway.

With a storied history stretching back to the beginning of the Industrial Revolution, the East Lancashire Railway is the steam powered heart of the Irwell Valley, pumping goods and people around the region for nearly 200 years!

The line runs for 12 miles through scenic Lancastrian Landscapes, from beautiful rural

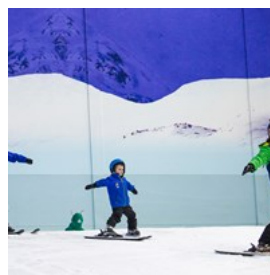
panoramas and postcard pretty villages to bustling Victorian towns and cotton mill dotted horizons. Each station offers something unique, from historical Heywood to relaxing Rawtenstall, scenic Summerseat and bustling Bury.

Photo: East Lancashire Railway

Address: Bolton Street Station, Bolton Street, Bury, GREATER MANCHESTER, BL9 0EY

Internet: <https://www.visitmanchester.com/things-to-see-and-do/east-lancashire-railway-p86041>

Chill Factor



Looking for a family day out in 2019 which is packed with excitement and bursting with fun? Look no further than Manchester's indoor real

snow centre, Chill Factor.

Guaranteed to get the whole family away from their screens, Snow Park is perfect real snow activity for all the family. Prepare for bumps of the Downhill Donuts, the twists and turns of the Luge Slip 'n' Slide and the Snow Luge. What's a fun day out without a bit of family competition? Choose your favourite sledge and race to see who's king and queen of the slope! It's the perfect activity for an after school or weekend treat.

Photo: Chill Factor

Address: Trafford Way, Trafford Quays Leisure Village, Manchester, Greater Manchester, M41 7JA

Opening hours: Monday - Sunday 07:00 - 00:00*

Phone: +44 (0)843 596 2233

Internet: <https://www.visitmanchester.com/things-to-see-and-do/chill-factor-p86081>

Robinsons Brewery Visitor Centre



Take a trip to the Centre where visitors can witness the magic of the brewing process, admire new and original brewing equipment, create the

own perfect pub guide, find an ideal pub to run, visit the Shire horses, buy beer related gifts and also explore some real vintage gems showcasing just how things have changed since 1838.

Round off the visit with a delicious homemade lunch or afternoon tea - freshly prepared, using local ingredients.

For more information, visit:

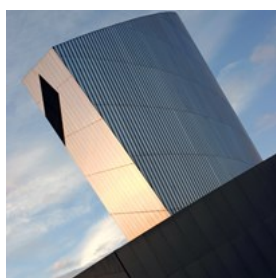
www.robinsonsvisorscentre.co.uk

Photo: Robinsons Brewery

Address: Apsley Street, Stockport SK1 1JJ

Internet: <https://www.visitmanchester.com/things-to-see-and-do/robinsons-brewery-visitor-centre-p309481>

Imperial War Museum



The Imperial War Museum North is about people and how their lives have been, and still are, shaped by war and conflict. The building is

by international architect Daniel Libeskind, and is a symbol of our world torn apart by conflict.

Photo: photogen/Shutterstock.com

Address: The Quays, Trafford Wharf Road, Manchester

Public Transport: Eccles line to MediaCityUK.

Opening hours: Daily 10am-4:30pm

Phone: +44 161 836 4000

Internet: www.iwm.org.uk

Standedge Tunnel & Visitor Centre



Hard hats at the ready! Standedge Tunnel is Britain's longest, deepest and highest canal tunnel, hidden deep beneath the beautiful Pennine

countryside. One of the seven wonders of our waterways, this must-see attraction is located in Marsden, a charming Yorkshire village.

A great day out for all the family, there is something for everyone to enjoy! Discover the history of Standedge in the visitor centre which is free to enter. Learn the stories of the folk that built and navigated this tremendous tunnel. Meanwhile, the kids will be kept occupied in the indoor soft play area and outdoor adventure play area!

Feeling peckish? You'll find the wonderful Watersedge Café in the old Tunnel End cottages. Enjoy a cup of tea and a slice of cake or visit for lunch on a lovely summer's day by the canal. You may even see the resident ducks, Jemima and Duncan, float past the picnic tables.

Tick this one off your bucket list today...

Photo: Standedge Tunnel

Address: Waters Road, Marsden, Huddersfield, West Yorkshire, HD7 6NQ

Phone: +441484 844298

Internet: <https://www.visitmanchester.com/things-to-see-and-do/standedge-tunnel-and-visitor-centre-p372011>

Email: standedge@canalriverstrust.org.uk

Great Northern Warehouse



The Grade 2 listed Great Northern building, a former railway goods distribution warehouse is now a lively leisure and shopping development

with bustling bars, restaurants, shops, health club, cinema, casino, bowling alley and an elegant landscaped public square. Located on Deansgate in the centre of Manchester, Great Northern offers the city centre destinations with a touch of class.

Photo: Great Northern Warehouse

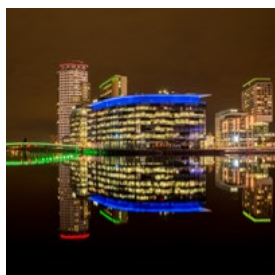
Address: 235 Deansgate, Manchester, Greater Manchester, M3 4EN

Opening hours: 21 hours a day, 7 days a week

Phone: +44 (0)161 832 8136

Internet: <https://www.visitmanchester.com/things-to-see-and-do/great-northern-warehouse-p384541>

BBC Tours at MediaCityUK



The BBC in the North is offering viewers and listeners the chance to step inside its new home in Salford with the launch of its official tours. Home

to a host of BBC channels and programmes including favourites such as Match of the Day, Mastermind and Blue Peter, the tours will give visitors the chance to take a look behind the scenes and learn more about the world of broadcasting.

Visitors will gain an insight into the many programmes made by the BBC in Salford and the level of work it takes to get them from script to screen, and even get the chance to take part in their own very television production in the interactive studio.

A special CBBC interactive tour is also available for children aged between 6 and 11 years old, giving kids the chance to learn about their favourite programmes and have a go at being a CBBC presenter.

Photo: Marketing Manchester

Address: MediaCityUK, The Quays, Salford, M50 2LH

Tickets: <https://www.visitmanchester.com/things-to-see-and-do/tours-and-sightseeing/tours-and-tour-guides/bbc-tours-at-mediacityuk-p372881>

Internet: <https://www.visitmanchester.com/things-to-see-and-do/tours-and-sightseeing/tours-and-tour-guides/bbc-tours-at-mediacityuk-p372881>

Belle Vue Greyhound Stadium



A celebration of speed and a festival of fun.

Great British home-cooked food and at-table drinks and betting service in the

restaurant, private suites or a great trackside combo of fast-food treats, roomy and efficient bars and plenty of inside seating. And an unbeatable view.

Your big night out, your way at Manchester's party capital.

Belle Vue dogs race every Thursday, Friday and Saturday Evening. Doors Open at 6pm. First Race 7.20pm. Bars Open until 11pm.

Complete novice? Don't worry, the dogs is all about a big old party night out. Good food, good drink, great company. If you fancy a flutter then pick up a racecard. Pick out your dog and place your bet. If you need a hand, just ask any betting attendant.

Wander out onto the terraces or stay in the

warm, bright grandstand to enjoy the thunder on the track as up to 13 races blister their way through your evening. Don't blink though; The Dogs are so fast each race is over in just a high-adrenaline few seconds.

Photo: Belle Vue Greyhound Stadium

Address: Kirkmanshulme Lane, Manchester, Greater Manchester, M18 7BA

Phone: +44 (0)870 840 7557

Tickets: <https://www.visitmanchester.com/things-to-see-and-do/belle-vue-greyhound-stadium-p1751>

Internet: <https://www.visitmanchester.com/things-to-see-and-do/belle-vue-greyhound-stadium-p1751>

Bramall Hall



This magical Tudor manor house is set in more than 50 acres of parkland with lakes, woods and gardens. The house contains 16th cent.

wall paintings, fine Elizabethan plaster ceilings, Victorian kitchens and servants' quarters.

The hall reopened in 2016 following a £1.6million renovation.

Photo: Wikimedia (image cropped)

Address: Bramhall Park, Stockport, Greater Manchester, SK7 3NX

Internet: <https://www.visitmanchester.com/things-to-see-and-do/bramall-hall-p84561>

Stockport Air Raid Shelters



Step back in time and experience the sights and sounds of Britain's Home Front. Wander around the original tunnels, authentically

re-equipped, which provide you with first-hand experience of daily life in 1940s wartime Britain.

Enjoy the displays and the state-of-the-art audio-guide which tell the stories of local people who shared the experience of the war.

Opened in 1939, the shelters were the largest purpose-built civilian air raid shelters in the country designed to provide shelter for up to 3,850 people. They were extended in 1940-41 to accommodate 6,500.

In 1996 Stockport Council re-opened the shelters as a visitor attraction and this unique, award-winning museum became one of Stockport's most significant attractions and educational facilities. Excavated into the natural sandstone cliffs of the town centre, the mile-long network of underground tunnels offers visitors a direct and exceptional insights into life on the Home Front.

Photo: Stockport Air Raid Shelters

Address: Great Underbank, Stockport SK1 1NE

Phone: +44161 474 1940

Internet: <https://www.visitmanchester.com/things-to-see-and-do/stockport-air-raid-shelters-p85561>

Email: airraidshelters@stockport.gov.uk

Stockport Town Hall



Whether you are looking for a venue to host your special occasion, corporate function or simply looking for an event to entertain you

-please look no further. Stockport Town Hall has plenty to offer -from hosting a memorable dinner dance to providing versatile areas for small meetings and organisations to gather. We can provide a wealth of high quality services for every occasion.

Photo: Stockport Town Hall Facebook
Address: Stockport Town Hall, Edward Street, Stockport, SK1 3XE
Phone: +44161 474 3451
Internet: <https://www.visitmanchester.com/things-to-see-and-do/stockport-town-hall-p35791>
Email: venue.management@stockport.gov.uk

Heaton Park



At Heaton Park, the largest and most beautiful park in the area, you can find plenty of family activities, such as an animal centre, tram museum, bowling greens, golf course, boating lake, and horse riding. If you haven't brought your picnic basket, there are cafés to solve that problem.

Photo: Alastair Wallace / Shutterstock.com
Address: Middleton Rd, Higher Blackley, Manchester
Opening hours: Daily 8am-sunset
Phone: +44 161 773 1085
Internet: www.manchester.gov.uk/heatonpark

City Centre Cruises



City Centre Cruises offer a variety of cruises aboard the luxurious restaurant boat 'LS Lowry' discovering the waterways of Manchester and Salford. Leaving the city we can travel to Pomona and descend the lock onto The Manchester Ship Canal and River Irwell, from here you can view the various waterside developments including The Lowry, The Imperial War Museum North and MediaCityUK.

Photo: City Centre Cruises
Address: Liverpool Road, Manchester, Lancs, M3 4JR
Phone: +44 (0)161 902 0222
Internet: <https://www.visitmanchester.com/things-to-see-and-do/victoria-baths-p85091>

[do/tours-and-sightseeing/tours-and-tour-guides/city-centre-cruises-p329341](https://www.visitmanchester.com/things-to-see-and-do/tours-and-sightseeing/tours-and-tour-guides/city-centre-cruises-p329341)

Victoria Baths



The Victoria Baths complex was designed by Manchester's first City Architect Henry Price, and opened in 1906. In their design and construction no expense was spared. The façade has multicoloured brickwork and terracotta decoration, the interior spaces are clad in glazed tiles and most of the windows have decorative stained glass.

At the opening ceremony the Lord Mayor described Victoria Baths as 'a water palace of which every citizen of Manchester is proud'.

For 86 years the baths provided both essential and leisure facilities. Private baths and a laundry were housed there alongside three swimming pools and Turkish Baths. In 1952 the first public Aeratone (Jacuzzi) was installed.

Although the baths were closed in 1993, the Grade II listed building is remarkably intact with most of the stained glass and original tiling remaining.

Victoria Baths opens from March/April to October/November each year for weekly guided tours, public open days and special events.

Photo: Victoria Baths
Address: Hathersage Road, Manchester, Lancashire, M13 0FE
Phone: +44161 224 2020
Internet: <https://www.visitmanchester.com/things-to-see-and-do/victoria-baths-p85091>

FC United



FC United of Manchester is a community benefit society and a not-for-profit organization based on the outskirts of Manchester City

Centre.

They pledge “to develop strong links with the local community” and our volunteers and supporter base make us what we are and by doing so make a positive difference in Manchester and help change football for the better.

Whatever your background, story or beliefs, you are always sure of a warm welcome at Broadhurst Park

Photo: FC United

Address: Broadhurst Park, 310 Lightbowne Road, Moston, M40 0FJ

Phone: +44 (0)161 769 2005

Internet: <https://www.visitmanchester.com/things-to-see-and-do/fc-united-p327391>

Hall i' th' Wood Museum



This Grade 1, 16th century half-timbered hall is one of the north-west's most important buildings.

Visitors can enjoy displays of 17th and early

18th century furniture, objects and artefacts, learn more about the life and work of Samuel Crompton and discover all about life in Stuart and Tudor times. The rooms have been accurately refurbished to retain their homely atmosphere.

Hall i' th' Wood Museum started life as a rich merchant's home during the mid-17th century.

Years later the building was split into several rented dwellings and, whilst living in one of these with his family, Samuel Crompton famously invented the Spinning Mule in 1779.

The mule went on to be one of the most significant spinning machines used by the textile industry. The house and grounds were presented to the people of Bolton in memory of Samuel Crompton and opened to the public as a museum in 1902.

Photo: <https://www.flickr.com/photos/dgeezer/>

Address: Green Way, Off Crompton Way, Bolton, GREATER MANCHESTER, BL1 8UA

Internet: <https://www.visitmanchester.com/things-to-see-and-do/hall-i-th-wood-museum-p85741>

Manchester Opera House



Opening all the way back in 1912, the Manchester Opera House hosts a constantly evolving lineup of theatrical and musical performances, from

timeless operas and ballets to more contemporary concerts and artists.

Photo: Tupungato/Shutterstock.com

Address: 3 Quay Street, Manchester

Opening hours: Mon-Sat 9am-10pm, Sun 10am-8pm

Phone: +44 844 871 7642

Internet: www.manchesteroperahouse.com

ART & CULTURE



Marketing Manchester

From music and art to theatre and architecture, Manchester's culture is known for its energy and excellence. The UNESCO City of Literature is awash with new and refurbished cultural venues and Manchester is preparing for the opening of The Factory, the new permanent home for the Manchester International Festival, in 2020, with high profile Pre-Factory events in 2018 as well as the next MIF in 2019.

Whitworth Art Gallery



After the Whitworth's stunning £15 million development the gallery now is fully integrated into the park it calls home. An art garden by Sarah Price, sculpture terrace and orchard garden, alongside new spaces that embrace the park, such as a landscape gallery and a café in the trees, all reflect its beautiful setting.

With double the room, and with exhibitions of new work by some of the world's leading artists alongside eclectic exhibitions drawn from its internationally rated collection of British watercolours, textiles, wallpapers and fine art, the Whitworth has become one of the city's must-see cultural destinations.

For more information go to manchester.ac.uk/whitworth

Photo: Shahid Khan / Shutterstock.com

Address: Oxford Road, Manchester

Public Transport: 1 mile from Oxford Road station

Opening hours: Fri-Wed 10am-5pm, Thu 10am-9pm

Phone: +44 161 275 7450

Internet: <https://www.visitmanchester.com/things-to-see-and-do/the-whitworth-p85251>

Email: whitworth@manchester.ac.uk

Museum of the Manchester Regiment



The Museum of the Manchester Regiment is currently closed whilst the redevelopment of the Town Hall is taking place. The Museum is still taking enquiries and offers during this time.

Explore the history of the Manchester Regiment and learn about the experiences of generations of Manchester Regiment soldiers; what they did, where and why. Marvel at the fine collection of weapons, uniforms and medals and step inside the First World War trench for an experience of what life was like on the Western Front.

The museum was winner of the Small Visitor Attraction of the Year 2009 at the Manchester Tourism Awards.

There is a full programme of exhibitions, events and interactive activities. Please call for more details. Entrance is free.

Photo: Manchester Regiment

Opening hours: Monday - Saturday, 10:00 - 16:00

Phone: +44 (0)161 342 2254

Internet: <https://www.visitmanchester.com/things-to-see-and-do/museum-of-the-manchester-regiment-p21841>

Science and Industry Museum



The Science and Industry Museum in Manchester is a place full of amazing objects and world changing ideas. Visit the world's oldest surviving passenger railway station and the world's first railway warehouse, built in 1830. Find out how our revolutionary railroad changed Manchester and the world forever.

Be inspired by the wonder of science, enjoy live demonstrations of historic working machinery, take part in fun science shows and lots more.

Photo: Science and Industry Museum

Address: Liverpool Road, Castlefield, Manchester, Greater Manchester, M3 4FP

Public Transport: Rail: the nearest train station is Deansgate (¼ mile away) and is approximately 10 minutes walk away

Bus: The free Metroshuttle bus (Route 1) stops outside of the Museum

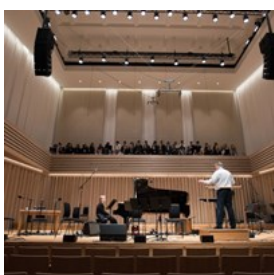
Tram: The nearest Metrolink tram stop is

Deansgate-Castlefield (¼ mile) and is approximately 10 minutes walks away.

Phone: +44 0161 832 2244

Internet: <https://www.visitmanchester.com/things-to-see-and-do/science-and-industry-museum-p85731>

The Stoller Hall



New to the city in 2017, The Stoller Hall offers an unrivalled acoustic and a stunning visual backdrop for live music, conferencing and performance. Based within Chetham's School of Music just metres from Victoria Station, it offers a completely new audience experience in the heart of the Medieval Quarter, with fully accessible facilities, bar and Box Office, as well as a smaller recital space in the Carole Nash Hall and a range of breakout rooms for smaller

meetings, participatory or Outreach events.

The Stoller Hall's public performance programme combines classical and contemporary performance, chamber music and recitals with comedy, spoken word and debate. There's something for families, for musicians, for adults who want to do more than just watch; there's jazz, world music and masterclasses, and there are inspiring performances by the students of Chetham's - the only specialist music school in the north of England, offering a world-class music and academic education to 300 of the finest young musicians from the UK and overseas. From free daily Lunchtime Concerts throughout the school term to full Symphony Orchestra and Chorus, they bring the freshest new musical talents to the city's newest stage.

Photo: The Stoller Hall

Address: Long Millgate, Manchester, Greater Manchester, M3 1SB

Internet: <https://www.visitmanchester.com/things-to-see-and-do/the-stoller-hall-p330181>

HOME



From gallery to screen via café bar and bookshop, HOME redefines the contemporary arts centre, creating a space where ideas, hopes and moments of wonder ricochet off walls and lodge themselves in the headspace of audiences old and new.

Following a highly anticipated opening weekend led by Danny Boyle in May 2015, HOME, Manchester's new centre for theatre, film and visual art has opened its doors to great fanfare and acclaim. Formed by the merger of the city's best-loved arts organisations, Cornerhouse and

the Library Theatre Company, there's something for everyone here.

Photo: Marketing Manchester

Address: Tony Wilson Place, Manchester, Lancs, M15 4FN

Phone: +44 (0)161 200 1500

Internet: <https://www.visitmanchester.com/things-to-see-and-do/home-p319181>

Royal Exchange Theatre



Manchester's Royal Exchange Theatre Company transforms the way people see theatre, each other and the world around them. Its historic

building, was taken over by artists in 1976.

Today it is an award-winning cultural charity that produces new theatre in-the-round, in communities, on the road and online.

Exchange remains at the heart of everything they make and do. Now, their currency is brand new drama and reinvigorated classics, the boldest artists and a company of highly skilled makers - all brought together to trade ideas and experiences with the people of Greater Manchester (and beyond).

The Theatre is a spectacular seven-sided, glass-walled capsule, suspended in the centre of the historic Cotton Exchange. This unique design means all seats are less than nine metres from the circular stage.

Photo: Royal Exchange Theatre

Address: St Ann's Square, Manchester M2 7DH

Phone: +44161 833 9833

Internet: <https://www.visitmanchester.com/things-to-see-and-do/royal-exchange-theatre-p84711>

Email: box.office@royalexchange.co.uk

Castlefield Gallery



Founded in 1984, the gallery is at the forefront of supporting emerging artists and new art practice in the UK.

Beyond displaying a diverse range of contemporary art across up to seven temporary exhibitions per year and presenting offsite projects, the gallery runs New Art Spaces; pop-up project spaces for artists and creatives across Greater Manchester, and CG Associates, a professional development scheme for artists, writers and independent curators.

Photo: Castlefield Gallery

Address: 2 Hewitt Street, Knott Mill, Manchester, Greater Manchester, M15 4GB

Opening hours: Wednesday - Sunday 13:00 - 18:00*

Phone: +44 (0)161 832 8034

Internet: <https://www.visitmanchester.com/things-to-see-and-do/castlefield-gallery-p1411>

Central Library



This iconic city venue, designed by E. Vincent Harris, was first opened in 1934. Following a £50m refurbishment in 2010, taking four years, the Grade II listed building has been brought into the 21st century by combining historic features with cutting-edge design. Take a look at previously hidden heritage spaces and the magnificent Wolfson Reading Room.

Central Library is incomparable to any other venue in the city.

Photo: Marketing Manchester

Address: St. Peters Square, Manchester, Greater Manchester, M2 5PD

Phone: +44 (0)161 234 1900

Internet: <https://www.visitmanchester.com/things-to-see-and-do/central-library-p1551>

Portland Basin Museum



In the attractive, waterside setting of Portland Basin, the newly refurbished Heritage centre celebrates the people, events and industries, which have shaped the history of Tameside over the past two hundred years.

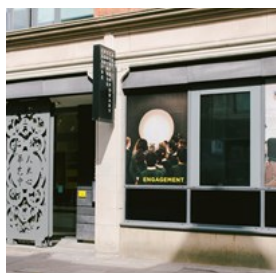
Photo: Portland Basin Museum

Address: Portland Place, Ashton-under-Lyne, Greater Manchester, OL7 0QA

Internet: <https://www.visitmanchester.com/things-to-see-and-do/portland-basin-museum-p85151>

Email: portland.basin@tameside.gov.uk

Centre for Chinese Contemporary Art



Centre for Chinese Contemporary Art (CFCCA) leads the UK in exploring Chinese contemporary culture. CFCCA aims to make Chinese contemporary art and visual culture accessible to everyone through a unique programme of exhibitions, film screenings, talks, performances and workshops.

Exhibitions are set across intimate gallery spaces, where visitors get up close and personal with the artworks on display. The Centre has a proud 30-year history of UK 'first' solo exhibitions, featuring exceptional emerging artists that go on to achieve international acclaim. A unique events programme explores different aspects of exhibitions and includes practical workshops, film screenings, informal talks and performances.

The shop stocks a range of East Asian themed jewellery, cards, prints, homeware and gifts, making CFCCA a must-see destination for all visits to the Northern Quarter whether you are looking for a cultural activity, discovering a new artist or buying a unique gift.

The centre also makes a beautiful and unique venue to hire for a range of activities.

Photo: Centre for Chinese Contemporary Art

Address: Market Buildings, Thomas Street, Northern Quarter, Manchester, Greater Manchester, M4 1EU

Opening hours: Tuesday - Sunday 10:00 - 17:00

Phone: +44 (0)161 832 7271

Internet: <https://www.visitmanchester.com/things-to-see-and-do/centre-for-chinese-contemporary-art-p152671>

Working Class Movement Library



The Working Class Movement Library records over 200 years of organising and campaigning by working men and women for social and political progress.

The library is built on the personal collection of Ruth and Edmund Frow and now holds tens of thousands of books, pamphlets and archives, as well as posters, banners, prints, newspapers, photographs and more.

The new permanent displays give a taste of the many aspects of working people's personal and political lives which are represented in our collections. They show campaigners speaking up for change, from Peterloo and the suffragettes to ramblers seeking the 'right to roam'. There are stories of First World War conscientious objectors, and local volunteers who fought in the

Spanish Civil War in the 1930s and there are accounts and pictures of the Battle of Bexley Square when, in the last Great Depression, 10,000 unemployed Salfordians demonstrated against the hated Means Test.

Admission to the library is free and all are welcome. Individual and group tours are also welcome by appointment.

Photo: Working Class Museum

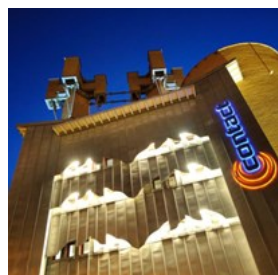
Address: Jubilee House, 51 The Crescent, Salford, Greater Manchester, M5 4WX

Phone: +44161 736 3601

Internet: <https://www.visitmanchester.com/things-to-see-and-do/working-class-movement-library-p21451>

Email: enquiries@wcml.org.uk

Contact Theatre



Contact is Manchester's provocative and innovative performance venue situated in the heart of the city's busy Oxford Road Corridor, and is a short walk from both Manchester Museum and The Whitworth.

The venue's distinctive towers make it one of Manchester's most unique architectural gems and the interior includes a 300 seat main auditorium, a 70 seat flexible studio, rehearsal and gallery spaces, and a café bar.

Contact is the national contemporary arts organisation that places young people's decision-making and leadership at the heart of everything, and young people aged 13+ work alongside its staff in deciding its programme of theatre, dance, spoken word, music, comedy and visual art. The result is a remarkable, diverse and exciting programme for everyone.

Photo: Contact Theatre

Address: Devas Street, Manchester, M15 6JA

Internet: <https://www.visitmanchester.com/things-to-see-and-do/contact-theatre-p326611>

Gallery Oldham



Gallery Oldham provides a wide range of exhibitions and activities targeted at different audiences of all ages. Current and forthcoming

exhibitions feature artworks and items from Oldham's diverse collections alongside newly commissioned art, international work, touring exhibitions and work produced with local communities.

Talks and tours, art and craft workshops, work with schools and artist residencies are all part of the gallery's regular activities programme.

Photo: Gallery Oldham

Address: Oldham Cultural Quarter, Greaves Street, Oldham, GREATER MANCHESTER, OL1 1AL

Public Transport: By Bus: The gallery is a few minutes' walk from Oldham bus station. There is also a bus stop in front of the gallery on Union Street. If you are travelling from Manchester, bus routes 83 and 180 run regularly to Oldham from the Northern Quarter.

Opening hours: Monday - Saturday, 10:00 - 17:00*

Phone: +44 0161 770 4653

Internet: <https://www.visitmanchester.com/things-to-see-and-do/gallery-oldham-p85241>

Elizabeth Gaskell's House



For over 150 years, this house has been associated with its most famous resident: the novelist, Elizabeth Gaskell, who lived here

from 1850 to 1865.

Thanks to a major £2.5m project funded by the Heritage Lottery Fund and others, the restored House is fully open to the public for the first time.

Visit the house to find out about Elizabeth and William's work, explore the lives of their daughters and servants and discover the Manchester that the Gaskells knew.

Be welcomed into the house by one of knowledgeable volunteers, take a seat in one of the four Victorian period rooms and learn about the painstaking restoration process. See where Elizabeth would have written her famous novels and stroll around the beautiful recreated gardens imagining yourself in Victorian Manchester.

The house also has two exhibitions and a tea room in the old kitchen and servant's hall, serving up delicious cake and hot drinks in dainty china cups and saucers.

Photo: Elizabeth Gaskell's House
Address: 84 Plymouth Grove, Manchester, Greater Manchester, M13 9LW
Opening hours: Wednesday - Thursday, 11:00 - 16:30, Sunday 11:00 - 16:30
Phone: +44 (0)161 273 2215
Internet: <https://www.visitmanchester.com/things-to-see-and-do/elizabeth-gaskells-house-p48861>

The Lowry



local, national and international renown.

A magnificent building alongside Salford Quays, inside visitors will find three stunning theatres alongside galleries showcasing artists of

The Lyric (the largest stage in England outside London) and the more intimate Quays. With a huge variety of performances, The Lowry's Lyric and Quays Theatres offer a wealth of fabulous entertainment, including West End musicals, the very best in drama, live bands, famous comedians, plus world class dance and opera. From Peter Kay to the Kirov Ballet, Morrissey to Alan Bennett and much more.

The Lowry Galleries showcase changing exhibitions by one of Britain's best loved artists, LS Lowry, as well as paintings, sculpture and photography from around the world. There's always something new and refreshing to see in the galleries. Gallery entry is free.

Photo: Shahid Khan / Shutterstock.com
Address: Pier 8, Salford Quays, Manchester
Phone: +44 843 208 6000
Internet: <https://www.visitmanchester.com/things-to-see-and-do/the-lowry-p85521>

People's History Museum



The People's History Museum is truly unique. A national museum charting the history of the struggle for equality and democracy in the UK, it's perfectly suited to the radical city of Manchester. There have always been ideas worth fighting for. Join a march through time at the museum following Britain's struggle for democracy over two centuries. Meet the revolutionaries, reformers, workers, voters and citizens who fought our battle for the ballot. Gather amongst their magnificent banners and discover how time off was won (and spent). Enjoy the main galleries, Changing Exhibition Gallery and Community Gallery, along with interactives and activities for visitors of all ages.

Browse the shop for unique books and gifts and round off your day with a bite to eat in the museum's on site cafe bar The Left Bank.

The museum is Family Friendly throughout, welcoming visitors of all ages. There's hands-on stuff in every gallery and regular activities especially for children.

The museum also offers a Learning programme for early years to adult learners, and houses the Labour History Archive & Study Centre, Textile Conservation Studio and venue hire facilities.

Free entry, donations welcome.

Photo: Iakov Filimonov / Shutterstock.com
Address: Left Bank Spinningfields, Manchester
Opening hours: Daily 10am-5pm
Phone: +44 161 838 9190
Internet: <https://www.visitmanchester.com/things-to-see-and-do/peoples-history-museum-p85701>
Email: info@phm.org.uk

Manchester Art Gallery



The Manchester Art Gallery is one of the country's finest art museums, boasting fantastic collections that mix the very best of contemporary art with long-standing artistic traditions, spanning an impressive 6 centuries.

Photo: Alastair Wallace / Shutterstock.com
Address: 81 Princess St, Manchester
Opening hours: Fri-Wed 10am-5pm, Thu 10am-9pm
Phone: +44 161 235 8888
Internet: www.manchesterartgallery.org
Email: manchesterartgallery@manchester.gov.uk

Manchester Museum



The collections at the Manchester Museum number almost 6 million specimen and objects. It is also home to one of the largest and most important collections of ancient Egyptian artefacts in the United Kingdom. It even has a Botany collection, live animals at the Vivarium and an Archaeology collection.

Photo: Alastair Wallace / Shutterstock.com
Address: The University of Manchester, Oxford Road, Manchester
Public Transport: Oxford Rd/University Shopping Ctr (Stop F)
Phone: +44 161 275 2648
Internet: www.museum.manchester.ac.uk
Email: museum@manchester.ac.uk

ACCOMMODATION



Marketing Manchester

Greater Manchester offers a wide range of accommodation, from unique boutique hotels and luxury pads to beautiful countryside settings and cosy family hideaways, there's something to suit every need and taste.

The Lowry Hotel



The Lowry Hotel is a five-star contemporary hotel where Salford meets Manchester on the banks of the River Irwell.

Offering 165 bedrooms, six suites and the Charles Forte Presidential suite with floor-to-ceiling windows all of the bedrooms have plenty of space, with a super-king-size bed or two singles dressed in a custom-made wool blanket with bathrooms in Italian porcelain. The Riverside suites have two entrances a separate lounge and a dining area (seating four), which is ideal for entertaining, and a pantry-kitchenette. There's one on each of the hotel's six floors five of the six Riverside Suites can be interconnected to an additional room, making them popular with families and long-stay guests.

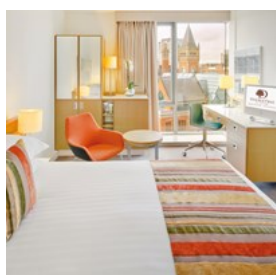
Photo: The Lowry Hotel

Address: 50 Dearmans Place, Chapel Wharf, Manchester M3 5LH

Phone: +44 161 827 4000

Internet: <https://www.visitmanchester.com/where-to-stay/the-lowry-hotel-p82751>

DoubleTree by Hilton Manchester Piccadilly



DoubleTree by Hilton Hotel

Manchester-Piccadilly is ideally located in the heart of the city. The hotel is just a 2 minute

walk from Piccadilly train station and is the perfect location for both leisure and business. The 285 guest bedrooms are all designed to give you space to work or just simply relax.

Personal guest service and attention to detail ensures comfort at every level with

complimentary Wi-Fi, 42 inch flat screen TV with Sky Sports channels, luxury Sweet Dreams® beds, floor-to-ceiling opening windows, air conditioning, mini fridge and complimentary mineral water as standard in every guestroom.

Photo: Doubletree by Hilton

Address: One Piccadilly Place, Manchester, M1 3DG

Phone: +44 0161 2421000

Internet: <https://www.visitmanchester.com/where-to-stay/doubletree-by-hilton-hotel-manchester-piccadilly-p83981>

YHA Manchester



This Manchester Youth Hostel is within easy reach of some of the best shopping, sport, nightlife, museums and theatres in north of England. This

canal-side backpackers hostel has been re-fitted, so a city break will be even more comfortable - great quality accommodation for a Manchester weekend break close to Manchester's city centre. Brilliant for a pre-dinner drink in the bar or a tasty evening meal. Or you can people-watch from the restaurant window or terrace.

Photo: Manchester YHA

Address: Potato Wharf, Manchester, M3 4NB

Phone: +44161 839 9960

Internet: <https://www.visitmanchester.com/where-to-stay/manchester-yha-p84391>

Radisson Blu Edwardian Manchester Hotel



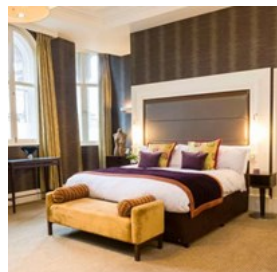
A monumental listed frontage combined with powerful new landmark architecture. Opposite Manchester Central, Manchester International

Conference Centre and Bridgewater Hall, in the middle of the breathtaking new conference quarter development. Contemporary interior

design is celebrated in 263 superb rooms, including two presidential suites and 20 junior and Al Fresco suites. Purpose designed meeting facilities with 21st Century technology is evident in the 22 conference and meeting rooms with a capacity of up to 500. With a Japanese and Mexican small plates restaurant, Peter Street Kitchen, the hotel is also perfect for enjoying afternoon tea or a cocktail, providing the perfect destination for social gatherings or business meetings

Photo: Radisson Blu Edwardian Hotels
Address: Free Trade Hall, Peter Street, Manchester, Greater Manchester, M2 5GP
Public Transport: Nearest bus station - Chorlton Street.
Nearest Train Station - Manchester Piccadilly
Phone: +44 (0)161 835 9929
Internet: <https://www.visitmanchester.com/where-to-stay/radisson-blu-edwardian-manchester-hotel-p83561>

The Midland Hotel

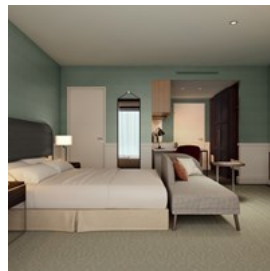


Set in the heart of Manchester, this Grade II listed Edwardian building exudes elegance and style. Following its recent refurbishment, the hotel

boasts 312 luxurious, air conditioned bedrooms, a leisure club, two bars and two distinctly different restaurants, including the double AA rosette awarded French Restaurant. Ideally located for the city's thriving nightlife and excellent shopping facilities.

Photo: Marketing Manchester
Address: Peter Street, Manchester, M60 2DS
Public Transport: From: M60, J5, 5 miles (8 km) Directions: M56 - 6 miles and M60 - 5 miles. M56 becomes the A5103, follow city centre signs. Hotel is at the end of the A5103 on the left-hand side.
Phone: +44 (0)161 236 3333
Internet: <https://www.visitmanchester.com/where-to-stay/the-midland-hotel-p82771>

Staybridge Suites Manchester

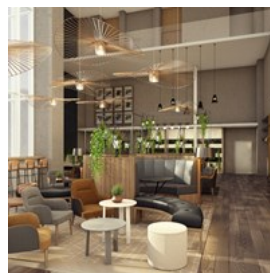


The longer you stay the less you pay at this modern extended stay hotel, next to Alliance Manchester Business School on the Manchester

University Campus. This is a hotel where you come to live, rather than stay, and a warm and friendly welcome awaits you at Staybridge Suites Manchester.

Photo: Staybridge Suites
Address: 30 Higher Chatham Street, Manchester, Greater Manchester, M15 6ED
Phone: +44 (0)161 359 5556
Internet: <https://www.visitmanchester.com/where-to-stay/stay-bridge-suites-manchester-p352721>

Crowne Plaza Manchester - Oxford Road



Crowne Plaza Manchester - Oxford Road is conveniently located next to the Alliance Manchester Business School on the University of Manchester campus just off Oxford Road.

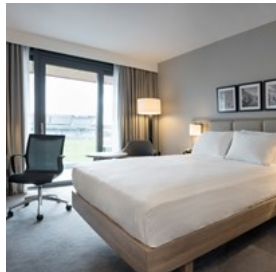
When sleep is at a premium, utilize the Sleep Advantage® programme. Treat yourself to a Club Room and enjoy Club Lounge access with complimentary breakfast, evening drinks and canapes.

Start the morning with a workout at the 24-hour Fitness Centre, with maps of local running routes, towels and water available from the Run Station.

Photo: Crowne Plaza
Address: 55 Booth Street West, Manchester, Greater Manchester, M15 6PQ
Phone: +44 (0)161 359 5550

Internet: <https://www.visitmanchester.com/where-to-stay/crowne-plaza-manchester-oxford-road-p336391>

Hilton Garden Inn Manchester Emirates Old Trafford



The brand new 150 bedroom Hilton Garden Inn hotel is on-site at Emirates Old Trafford, home to Lancashire County Cricket Club and offers the best value accommodation for leisure in Manchester and the surrounding areas.

There are five floors with rooms overlooking the world famous cricket pitch, which can be converted to hospitality boxes on match days where you will have sublime views of every match whilst also being able to spend time with friends and family in luxurious yet relaxed surroundings.

The hotel also includes fantastic facilities such as a restaurant, coffee shop, resident's gym and free on-site car parking.

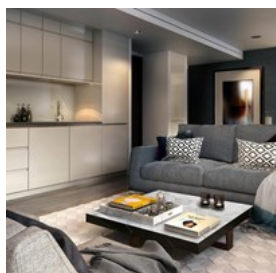
Photo: Hilton Garden Inn

Address: Talbot Road, Old Trafford, Manchester, Lancs, M16 0PX

Phone: +44 (0) 161 868 7100

Internet: <https://www.visitmanchester.com/where-to-stay/hilton-garden-inn-emirates-old-trafford-p331051>

CitySuites



CitySuites are Manchester's only luxury serviced apartments, combining the comforts of home with the luxury touches of a hotel,

providing an exceptional living experience far surpassing standard serviced apartment expectations.

Their two exceptional apartment collections, The Definitive Collection and The Signature Collection, are equally designed to fulfil personal needs. Desire a room with a view? Penchant for a fusion of style and space? Guests are sure to find the ideal city sanctuary within their generous selection. Come home to an immaculate apartment with a weekly cleaning service and twice-weekly towel change. Indulge in complementary home essentials, found in every apartment and provided by The White Company.

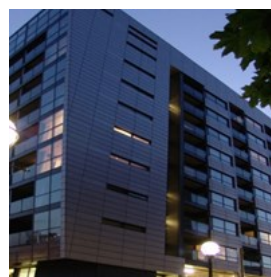
Photo: CitySuites

Address: 16 Chapel Street, Manchester, Lancs, M3 7NH

Phone: +44 (0)161 302 0202

Internet: <https://www.visitmanchester.com/where-to-stay/city-suites-p329181>

Quay apartments



Quay apartments in Salford Quays have high-spec furnishings and fittings, with secure on-site parking and free Wi-Fi. Located in Salford Quays with contemporary modern apartments.

The spacious rooms feature contemporary decor, and each bedroom has a private bathroom. All apartments have a flat-screen TV with digital channels and DVD player. Wi-Fi is accessible throughout the apartments.

Quay Apartments is approximately 10-minute drive from Old Trafford and 5 minute drive from Manchester United Football Club. Manchester city centre is 10 minutes' drive away.

Salford Quays is a cultural hub in the North-West, offering art, retail and leisure

venues in a thriving waterfront quarter. It is close to the motorway, and just west of the attractions in Manchester city centre.

Photo: Quays apartments

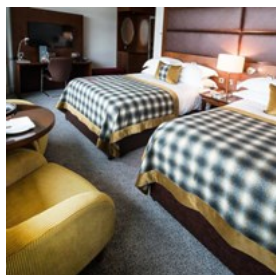
Address: 250 The Quays, Salford Quays, Manchester M50 3SB

Phone: +44161 225 1423

Internet: <https://www.visitmanchester.com/where-to-stay/quay-apartments-p193721>

Email: enquiries@quayapartments.co.uk

Macdonald Manchester Hotel



Macdonald Manchester Hotel & Spa, set in the heart of Cottonopolis, is Manchester's largest four-star hotel. Perfectly located, our eye-catching expanse dominates the skyline all the way from Piccadilly Station to the Mancunian Way, allowing for quick and easy access to and from all the major motorways.

The team at our hotel in Manchester is driven to deliver an outstanding guest experience and has a reputation for its service standards and food quality. The Macdonald Manchester Hotel & Spa combines 338 beautiful bedrooms with an indulgent urban spa, first class bar and live theatre restaurant experience.

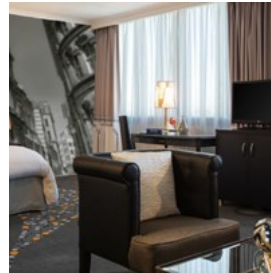
Photo: Macdonald Hotel Manchester

Address: London Road, Piccadilly, Manchester, Greater Manchester, M1 2PG

Phone: +44 (0)844 879 9088

Internet: <https://www.visitmanchester.com/where-to-stay/macdonald-manchester-hotel-p53061>

Renaissance Hotel



Located in one of the most exciting cities in UK, the 4 star Renaissance Manchester Hotel is at the heart of Manchester's entertainment quarter. Experience the vibrant café and bar culture of this bustling cosmopolitan city. Situated on Deansgate within walking distance to Harvey Nichols, Selfridges, MEN Arena and Manchester Central International Conference Centre.

The hotel is the perfect choice for large conferences, group or private dinners and weddings. Upon entering The Renaissance in city centre Manchester you will feel instantly taken care of with outstanding levels of service.

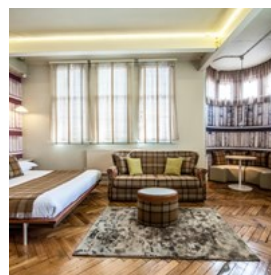
Photo: Renaissance Hotel Manchester

Address: Blackfriars Street, Manchester, Greater Manchester, M3 2EQ

Phone: +44 (0)161 831 6000

Internet: <https://www.visitmanchester.com/where-to-stay/renaissance-manchester-city-centre-hotel-p83091>

ABode Manchester



Located in the heart of Piccadilly, this Grade II listed former wholesale textile warehouse has embraced its industrial heritage. Exposed steel beams and structural iron columns together with an ornate wrought iron and walnut staircase are striking features. Beds are low and comfortable, while feature walls, a tuck box filled with regional food and drink, and complimentary WiFi can be found in all rooms. A relaxed, all-day brasserie menu features plats du jour with a comfortingly, nostalgic nod and time-honoured

classics. Generosity and value are at the heart of what we do; Sunday lunch is overflowing with trimmings, our classic dishes features plentiful sides and every cocktail comes with something to nibble on. Join us for brunch, lunch, dinner or late night cocktails.

Photo: ABode Manchester

Address: 107 Piccadilly, Manchester, GREATER MANCHESTER, M1 2DB

Phone: +44 (0)161 247 7744

Internet: <https://www.visitmanchester.com/where-to-stay/abode-manchester-p84171>

Campanile Hotel



A comfortably furnished hotel, conveniently located close to the city centre and within easy access to attractions such as Old Trafford, The Lowry and the Imperial War Museum North. All rooms are ensuite with satellite television and tea and coffee making facilities and hair dryer. A free secured car park is also available.

Photo: Campanile Hotel

Address: Ordsall Lane, Salford, Greater Manchester, M5 4RS

Phone: +44 (0)161 833 1845

Internet: <https://www.visitmanchester.com/where-to-stay/campanile-hotel-p80911>

Castlerose Boat Stay



Castlerose offers whole boat accommodation for up to six people which makes her an ideal choice for friends, families and small groups looking to enjoy a short stay city break in central Manchester.

Castlerose is 60ft long x 13'6" wide. She is fitted

out with two bedrooms & two bathrooms en-suite, a fully fitted kitchen, dining area and lounge with multi-fuel fire and TV & DVD. The master bedroom is luxuriously decorated with king size double bed and en-suite bathroom; The second bedroom can be set-up either as a two singles or super-king double and there is a double sofa bed in the lounge.

The fantastic mooring at Castlefield Basin in the heart of Manchester is a great location from which to enjoy short stay City Break holidays. Castlerose is moored in a tranquil spot amid the ducks, geese, neighbouring restaurants & inner city dwellers of Castlefield.

Guests are just a hop to the landmark Hilton Hotel with Cloud 23 Cocktail Bar, a skip to the the Bridgewater Hall and a jump to the many exciting experiences that await in the vibrant city of Manchester.

Overnight cruises are offered along the Bridgewater Canal to Worsley, the birthplace of the English canals and to the delightful Cheshire market town of Lymm.

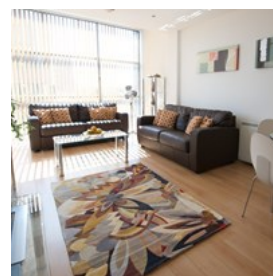
Photo: Castlerose Boat Stay

Address: Bridgewater Canal Path, Castlefield Basin, Manchester, Lancs, M15 4PR

Phone: +44 (0)7542 522639

Internet: <https://www.visitmanchester.com/where-to-stay/castlerose-boat-stay-p321861>

Stay Deansgate Apartments



Stay Deansgate offers superb one-bedroom apartments for short or longer stays in the centre of Manchester. You will find us right at the heart of the city, with great shopping, impressive

museums and unsurpassed nightlife all close-by. The spacious apartments have large living areas with full height glass windows, and access to a private balcony overlooking a quiet city street. There's free fibre-speed wifi, a large Smart enabled TV in the living area and a smaller TV in the bedroom.

Stylish living areas feature leather and glass furniture. Fully equipped kitchens include fridge/freezer, full oven and ceramic hob, microwave, dishwasher and washer/dryer. The bedrooms all have kingsize beds. Fluffy towels and luxury toiletries are provided in the bathrooms.

Lots of tourist information is provided, including a guide to the twenty or so restaurants on your doorstep. We are adjacent to Manchester Central, Castlefield canal basin, Desansgate-Castlefield Metrolink and Deansgate rail stations and are on the free city centre bus routes. Discounted access is available to a nearby health club with swimming pool and gym. On-site car parking can be arranged subject to availability. Minimum stay is 3 nights - for the best rates visit the website www.staydeansgate.co.uk.

Photo: Stay Deansgate Apartments
Address: Deansgate, Manchester, Greater Manchester, M3 4LA
Phone: +44 (0)1697 476 254
Internet: <http://www.staydeansgate.co.uk>
Email: cottages@monkhousehill.co.uk+44 (0)1697 476 254

De Vere Cheadle House



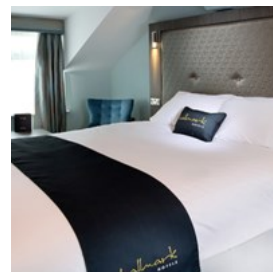
De Vere Venues Cheadle House perfectly embodies the Victorian ethos of elegant design and functionality. Inside, comfort is a priority with a clean, modern style, calming tones and contemporary furnishings.

Being so close to Manchester has its advantages; Cheadle House is just four miles east of Manchester International Airport and the city's shops, entertainment and vibrant night scene are close by.

Or escape the hustle and bustle of the city and experience the beauty of England's Northern Countryside. Cheadle House couldn't be in a better position for exploring picturesque Cheshire, Lancashire, the Lake District and beyond.

Photo: Cheadle House
Address: Royal Crescent, Cheadle Royal Business Park, Cheadle, Greater Manchester, SK8 3FS
Internet: <https://www.visitmanchester.com/where-to-stay/cheadle-house-de-vere-p112401>

Hallmark Inn Manchester South



Situated in Fallowfield, Hallmark Inn Manchester South is just a 10-minute drive from Manchester centre. The traditional hotel has free Wi-Fi and surcharge on-site secure parking.

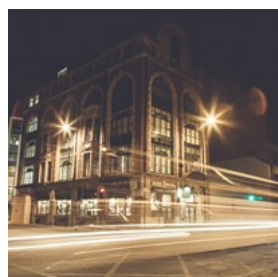
Each of the bright and airy bedrooms has a TV and a private bathroom with free toiletries. All rooms feature a work desk, trouser press and tea/coffee facilities.

Lowry Bar features a comfortable lounge area, and offers a range of light snacks and beverages.

Just a 15-minute drive from Manchester International Airport, Hallmark Inn Manchester South is 5 miles from the MEN Arena. Old Trafford Stadium is less than 5 miles away.

Photo: Hallmark Inn
Address: 340 Wilmslow Road, Fallowfield, Manchester, GREATER MANCHESTER, M14 6AF
Phone: +44 (0)330 028 3427
Internet: <https://www.visitmanchester.com/where-to-stay/hallmark-inn-manchester-south-p82781>

Hatters Hostel

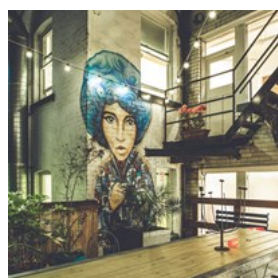


Manchester's favourite hostel with the best location - fun, friendly, and secure - better beds, better buzz! Close to everything including

Piccadilly and Victoria Train Stations, the bus station and bohemian heart of Manchester. Free WiFi. Breakfast included.

Photo: Hatters
Address: 50 Newton Street, Manchester, Greater Manchester, M1 2EA
Phone: +44 (0)161 236 9500
Internet: <https://www.visitmanchester.com/where-to-stay/hatters-hostel-p84401>

Hilton Chambers



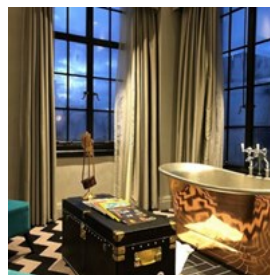
Part hotel and part backpackers, Hilton Chambers will provide you with the best value ensuite accommodation in the city. Rooms for 2 to 10 persons are equipped with modern furnishings and online access 24/7. Please note

all prices are per person per night. Breakfast is included.

Offering hotel style facilities while maintaining the fun and character of a hostel, this newly renovated site has all you need including a fully serviced self catering kitchen, internet access, en-suite dorms, free luggage storage plus the rest!

Photo: Hilton Chambers
Address: 15 Hilton Street, Manchester, Greater Manchester, M1 2EA
Phone: +44 (0)161 236 4414
Internet: <https://www.visitmanchester.com/where-to-stay/hilton-chambers-p84461>

Hotel Gotham



A luxury hotel set in one of Manchester's grandest listed buildings, boasting 60 bedrooms, a restaurant, and a rooftop members' bar and club.

Photo: Hotel Gotham
Address: 100 King Street, Manchester, M60 8HG
Phone: +44 (0)843 357 5555
Internet: <https://www.visitmanchester.com/where-to-stay/hotel-gotham-p296921>

La Reserve Aparthotel



La Reserve Aparthotel is located within close proximity to Piccadilly Train Station situated on 7 Ducie Street. Opened in November 2016, this deluxe property offers one, two and three bedroom spacious apartments, where guests can enjoy great scenery of Manchester and the surrounding Pennines.

La Reserve offers the comforts of home and all the apartments are fully equipped with kitchen appliances, furniture and all amenities that you look for in a modern apartment

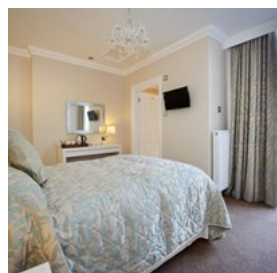
Photo: La Reserve

Address: 7 Ducie Street, Manchester, M1 2JB

Phone: +44 (0)161 359 6380

Internet: <https://www.visitmanchester.com/where-to-stay/la-reserve-aparthotel-p329401>

Lennox Lea Hotel



An attractive family owned hotel offering excellent food in the acclaimed Alexander's Restaurant. Although located on a peaceful tree lined road with ample free on site parking, the hotel is conveniently situated for Sale town centre and the Metrolink, Manchester city centre and the motorway network.

Numerous North West attractions are within easy reach as is the Cheshire countryside. All 26 bedrooms offer comfortable en suite facilities, beverage tray and many have been recently refurbished to an excellent standard. Attractions nearby include Manchester City Football Stadium, Lancashire County Cricket Club, Sale Waterpark, Dunham NT House & Gardens and the Trafford Centre.

Photo: Lennox Lea

Address: Irlam Road, Sale, Manchester, GREATER MANCHESTER, M33 2BH

Phone: +44 (0)161 973 1764

Internet: <https://www.visitmanchester.com/where-to-stay/lennox-lea-hotel-p82621>

SHOPPING



Marketing Manchester

Manchester has become northern England's shopping capital, offering variety, quality and bargains. From large shopping centres like Manchester Arndale and the Trafford Centre to the pedestrian boutique districts and markets dotting the city, to the unique items found at the Manchester Craft and Design Centre, shoppers will be spoilt for choice with everything from designer fashion to local handicrafts on offer.

Manchester Arndale



When it comes to shopping it has to be Manchester Arndale. Find a huge selection of exciting shops from the leading high street names such as Apple, Next, River Island, Topshop and Wallis to lots of smaller, stylish specialists and food outlets - and all under one roof.

Manchester Arndale is the Manchester city centre shopping centre! Located close to bus, tram and train networks it's easy to get to and, more importantly, easy to get from when you've got mountains of shopping to carry home.

Photo: Manchester Arndale

Address: Market St, Manchester

Phone: +44 161 833 9851

Internet: <https://www.visitmanchester.com/shopping/manche>

ster-arndale-p2651

Email: info@manchesterarndale.com

Northern Quarter



If you are looking for the very latest street fashion, you should head for Oldham Street, the main street in Northern

Quarter. It houses shops like Arc Gallery Store, where many young designers and artists exhibit their wares. Northern Quarter also has many small record shops and interior design shops for people who have an eye for trends. Artisans work at the Manchester Craft Centre in Oak Street. Affleck's Palace, on Church Street, is also worth a visit if you are interested in design. Many of the leading young names in Manchester are brought together in this four-storey building.

Photo: Matthew Hartley / Flickr (image cropped)

intu Trafford Centre



intu Trafford Centre have got everyone's favourite brands and some visitors might not have discovered yet including Selfridges, Stradivarius, Pull & Bear, Victoria's Secret, Primark and Khaadi.

For those who are more of a big day out shopper why not catch the latest blockbuster at ODEON IMAX, go deep underwater at SEA LIFE or explore LEGOLAND® Discovery Centre? Add in Namco Funscape and Laser Quest and visitors will have an action-packed weekend!

And when hunger strikes visitors will be spoilt for choice with over 60 amazing restaurants

including new additions Bill's, Five Guys, LEON and wagamama.

Photo: intu Trafford Centre

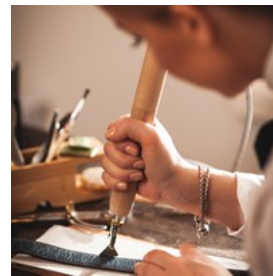
Address: Barton Dock Rd, Stretford, Manchester

Phone: +44 161 749 1717

Internet: <https://www.visitmanchester.com/shopping/intu-trafford-centre-p384491>

Email: marketing@thetraffordcentre.co.uk

Manchester Craft and Design Centre



Manchester Craft and Design Centre is a unique organization comprising 16 retail/studio spaces, an excellent cafe and a rolling programme of exhibitions from leading national and international makers.

Located in Manchester city centre's Northern Quarter, Manchester Craft and Design Centre is at the hub of a growing innovative and artistic community. It is one of the few places in the UK open to the public where contemporary goods are both individually produced and sold on the premises.

Formerly the Smithfield Victorian fish market and crowned with a huge glass roof, the Centre now houses two floors of shops ranging from jewellery, ceramics and textiles to furniture and clothing design.

Photo: Maksim Toome/Shutterstock.com

Address: 17 Oak St, Manchester

Opening hours: Mon-Sat 10am-5:30pm, Sun 11am-5pm

Phone: +44 161 832 4274

Internet: <https://www.visitmanchester.com/shopping/manchester-craft-and-design-centre-p338811>

Email: marketing@craftanddesign.com

Cheshire Oaks Designer Outlet



Cheshire Oaks was the first and remains the UK's largest Designer Outlet. With a quarter-million square feet of retail space,

comprising of more than 145 boutiques, restaurants and cafés, Cheshire Oaks isn't merely the UK's largest Designer Outlet. The Designer Outlet has a wide range of brands, offering something to suit every taste. Highlights range from athletic labels, like Nike and Adidas, and high-street favourites, like Marks & Spencer and Next, to a selection of iconic fashion brands, including Burberry, Polo, Michael Kors and Hugo Boss.

Photo: Cheshire Oaks

Address: Kinsey Road, Ellesmere Port, CH65 9JJ

Public Transport: By Bus: Cheshire Oaks Designer Outlet is well served by two buses. The number 1 and the X8 operated by Stagecoach run between Chester, Liverpool and Ellesmere Port on a daily basis.

Phone: +44 (0)151 348 5600

Internet: <https://www.visitmanchester.com/things-to-see-and-do/gateway-to-the-north/explore-the-north/cheshire-oaks-designer-outlet-p243201>

Spinningfields



One of the city's most vibrant destinations, Spinningfields is a thriving hub for work, rest and play. Home to some of Manchester's

most popular bars, restaurants and shops, Spinningfields is also the biggest commercial district in the city, housing some of the largest corporations in the North West.

Located on the River Irwell is the neighbourhood of Spinningfields, Leftbank, which encompasses

the some of the best casual dining Manchester has to offer - The Kitchens street food collective, The Dockyard and Indian street kitchen, Scene. Leftbank is a celebration of all things innovative and independent and the go-to alfresco location for food and drink.

Spinningfields is also home to The Avenue, which has an impressive array of flagship stores including Emporio Armani, Mulberry, Flannels and Oliver Sweeney, plus some of the most exciting eateries in the city.

Photo: Marketing Manchester

Address: Hardman Boulevard, Manchester, Greater Manchester, M3 3AQ

Internet: <https://www.visitmanchester.com/things-to-see-and-do/spinningfields-p320561>

Oklahoma



Oklahoma is Manchester's favourite Gift & Homeware Store, located in the city's bohemian district, the Northern Quarter.

Established in 1997, Oklahoma specialises in unique and quirky gifts and homeware. Spread out over 2000 sq. ft. of floor space and it is packed to the rafters with vibrant and colourful products from kitchenware to jewellery, cards, wraps, books & Stationery, retro sweets, tin toys, novelty items and curiosities from around the world.

With an emphasis on seeking out more unusual products and working with smaller independent designers, as well as the larger more established producers, we're able bring you an eclectic and unparalleled collection of products. With over 2000 different products in store at any time there's always something new around the corner,

keeping customers surprised, amazed and inspired.

Photo: Oklahoma

Address: 74-76 High Street, Manchester M4 1ES

Phone: +44161 834 1136

Internet: <https://www.visitmanchester.com/shopping/oklahoma-p326361>

Harvey Nichols



Harvey Nichols Manchester boasts the crème de la crème of what's hot in fashion, food and beauty. With leading luxury fashion brands including Dolce and Gabbana, Christian Louboutin and Givenchy - there's no other place in the city to shop for your new season wardrobe.

Beauty addicts will love the offering spread across two floors of this luxurious store. Brands including Shu Uemura, Shiseido, Crème de la Mer and Bobbi Brown not only have amazing products to buy, they also offer treatments, make up lessons and advice.

Take a break from shopping and indulge at the Second Floor Restaurant, Bar and Brasserie for cocktails, a light lunch, afternoon tea or a gourmet meal. In addition, the Foodmarket offers a selection of the finest food produce from around the world, along with an extensively stocked Wineshop, perfect for gifts.

Photo: Harvey Nichols

Address: 21 New Cathedral Street, Manchester, Greater Manchester, M1 1AD

Phone: +44 (0)161 828 8888

Internet: <https://www.visitmanchester.com/shopping/harvey-nichols-p20641>

The Royal Exchange Manchester



Once the hub of the world's cotton trade, The Royal Exchange Manchester is now an eclectic collection of luxury retailers, premium high street

brands and best in class independent boutique shops playing a key role in Manchester's thriving shopping and lifestyle culture.

Here you'll find established brands such as Watches of Switzerland, French Connection, Swarovski, Molton Brown and more, along with smaller independent boutique shops including Lanigan & Hulme menswear, Jenny Jones jewellers and Astons of Manchester. The Royal Exchange Manchester is also home to the first UK store for Swedish outdoor brand Fjallraven.

Situated in the heart of the city looking out on to St Ann's Square, The Royal Exchange Manchester is in close proximity to Manchester Arndale as well as luxury stores such as Selfridges, Harvey Nichols and House of Fraser, with many of Manchester's hotels, restaurants and cafes nearby.

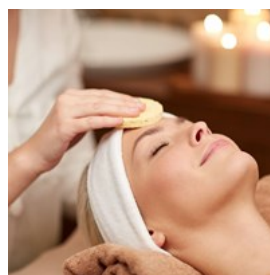
The building is also home to the much-loved Royal Exchange Theatre.

Photo: The Royal Exchange

Address: St Anns Square, Manchester M2 7DH

Phone: +44161 834 3731

Bali Health Lounge



Bali Health Lounge - an award winning city centre spa in the heart of Manchester providing professional quality massage and beauty

treatments for essential wellness.

With day spa facilities with relaxation lounge and tea house across three floors in a ornate Victorian building, Bali Health Lounge is an escape from the stresses of urban living. Exuding Balinese charm, they offer a fusion of traditional and contemporary spa treatments and techniques by highly-skilled and well-trained therapists.

Photo: Bali Health Lounge

Address: George Street, Manchester, Lancs, M1 4HF

Phone: +44 (0)161 850 2288

Internet: <https://www.visitmanchester.com/shopping/bali-health-lounge-p232861>

Stockport Market



Opened in 1861 in its current glass and iron form, on a site that has been populated by a market for over 700 years, Stockport Market has over 50 independent businesses selling everything from beer to buttons!

Open 4 days a week, you can explore stalls in the covered Market Hall, experience a variety of food stuffs in the Produce Hall, or take in the fascinating emporium of vintage goods and collectables at 20th Century Stores, providing visitors with a unique shopping experience.

Photo: Stockport Market

Address: Stockport, SK1 1ES

Phone: +44161 474 3523

Internet: <https://www.visitmanchester.com/shopping/stockport-market-p13071>

DKNY



Simply stated, DKNY is the energy and spirit of New York. International, eclectic, fun, fast and real. DKNY addresses the real-life needs of people everywhere, from work to weekend, jeans to evening.

Both fashionable and friendly, DKNY consistently delivers its unique mix of style around the world.

Photo: DKNY

Address: 76-80 King Street, Manchester, M2 4NH

Phone: +44 (0)161 8191048

Internet:

<https://www.visitmanchester.com/shopping/dkny-p208151>

EVENTS AND FESTIVALS



Marketing Manchester

As one of the most vibrant and cosmopolitan cities in the UK, there's always something on in Manchester. With a rolling calendar of events, festivals, exhibitions, concerts and theatre you'll never be stuck for world-class entertainment.

Manchester Beer Week



Manchester Beer Week, Manchester's only city-wide beer festival, allows you to explore Manchester's thriving beer scene, alongside

food, art, music, and history at a series of events across the city.

Photo: Manchester Beer Week

Address: Various Locations across Manchester

Internet: <https://www.visitmanchester.com/whats-on/events/manchester-beer-week>

Manchester International Festival



Manchester International Festival (MIF) is the world's first festival of original, new work and special events. The Festival is staged every

two years in Manchester, UK - the next edition will take place from 4 July - 21 July 2019 at venues all over the city.

MIF launched in 2007 as an artist-led festival presenting new works from across the spectrum of performing arts, visual arts and popular culture. We've commissioned, produced and presented world premieres by artists as diverse as Björk, Steve McQueen, Robert Wilson, Wayne McGregor, Maxine Peake, The xx, Zaha Hadid Architects, Damon Albarn, Punchdrunk, Elbow and Marina Abramović, among many others.

Photo: Manchester International Festival

Address: Various Locations across Manchester

Opening hours: 4th - 21st July 2019

Internet: <https://www.visitmanchester.com/whats-on/manchester-international-festival-p184581>

Manchester Film Festival



Manchester Film Festival is a truly independent film festival, committed and dedicated to sharing great stories from both new and established

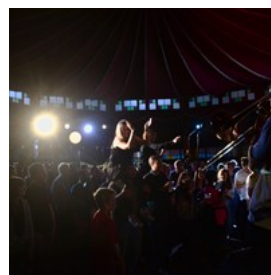
international and domestic filmmakers from the world of independent cinema.

Photo: Manchester Film Festival

Address: Odeon Manchester, Great Northern, Manchester, Greater Manchester, M3 4EN

Internet: <https://www.visitmanchester.com/whats-on/manchester-film-festival-p366141>

Manchester Jazz Festival



The award-winning Manchester Jazz Festival (mjf) is back to the city from May 23 - 27 2019. Along with a change of date, the main festival

hub will now run the length of St Ann's Square to New Cathedral Street with a host of free music stages and bars. As always, gigs will also be staged in venues across the city.

For the first time, mjf have teamed up with Manchester Food and Drink Festival, who will curate an exciting mix of culinary offers along the festival hub.

mjf is offering a £5 ticket offer for under 25 year olds at selected gigs for a limited time only to welcome the city's student population and celebrate the first term time mjf in more than 20 years.

Located from St Ann's Square all the way to New Cathedral Street.

Tickets for the following mjf 2019 events are now

on sale at manchesterjazz.com

Performers:

Keith Tippett & Matthew Bourne + Isotach Trio,
Noya Rao + Caoilfhionn Rose, Tim Garland's
Weather Walker, Emilia Mårtensson's Loredana

Photo: Manchester Jazz Festival

Address: St Anns Square - New Cathedral Street, Manchester

Opening hours: 23 - 27 May 2019

Internet: <https://www.visitmanchester.com/whats-on/manchester-jazz-festival-2019-p344301>

Manchester Pride



Manchester Pride is the charity that runs Manchester's annual LGBT celebration, The Manchester Pride Festival. The charity exists to celebrate LGBT life, campaign for greater LGBT equality and create opportunities for engagement for LGBT people in Greater Manchester.

The Manchester Pride Big Weekend incorporates The Big Weekend at Manchester's world famous Gay Village, The Manchester Pride Parade on the streets of the City Centre and The Candlelit Vigil in Sackville Park.

Photo: Manchester Pride

Address: Various Locations

Internet: <https://www.visitmanchester.com/whats-on/manchester-pride-big-weekend-p268531>

Parklife Festival



Manchester's biggest music festival returns to Heaton Park in 2019, with over 200 live acts and DJs!

Photo: Parklife Festival

Address: Heaton Park, Prestwich, Manchester M25 2SW

Opening hours: 8th - 9th June 2019

Internet: <https://www.visitmanchester.com/whats-on/parklife-festival-p329391>

Just So Festival



With a love of stories and childhood escapades at its heart, Just So Festival enables families to step out of their day to day lives and into a

wonderland of world class literature, arts, theatre, dance, music, comedy and creative pursuits together. Underpinned by the Tribal Tournament, the most bonkers competition in the land, it takes audiences (from bumps to great grandparents) on a unique expedition of mischief and mayhem, to lands full of magical midnight feasts, curious creatures, raucous pillow fights, hidden retreats, top notch food, drink and boutique camping options and breathtaking beauty.

Photo: Just So Festival/Wild Rumpus

Address: Rode Hall Estate, Scholar Green, Cheshire, ST7 3QT

Internet: <https://www.visitmanchester.com/whats-on/just-so-festival-p337001>

Email: hello@justsofestival.org.uk

The Lanterns at Chester Zoo



There will be new fantastical and colourful worlds, full of animal-inspired illuminations and traditional festive scenes

that will leave you with a warm-fuzzy feeling inside.

A colourful oversized Butterfly Garden, Nordic markets, stunning Christmas trees and a magical

ice kingdom all come together with our favourite animal lanterns from Christmases gone by.

Fill up on tasty festive feasts in Chester Zoo's brand new contemporary British pub, The Oakfield, or at the Christmas Market, finishing off the Christmas-card perfect scene. And remember.....keep an eye out for Father Christmas on his sleigh. He could be just around the corner!

Photo: The Lanterns at Chester Zoo/Wild Rumpus
Address: Chester Zoo, Caughall Road, Upton, Chester, Cheshire, CH2 1LH
Internet: <https://www.visitmanchester.com/whats-on/the-lanterns-at-chester-zoo-p395501>

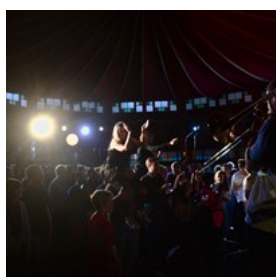
ACTIVITIES



Marketing Manchester

Manchester is bursting with activities for families and adults. From walking trails to urban crazy golf and escape rooms through to adventure courses, there's plenty to keep you entertained in Manchester.

Manchester River Cruises



Manchester River Cruises run regular sightseeing trips from Salford Quays on board the Dutch built 'Princess Katherine'. From the 50 minute Quays Adventures trips to a 4 1/2 hour

expedition to Ellesmere Port, Manchester River Cruises provide the ultimate way to enjoy the historic Manchester Ship Canal and River Irwell. Quays Adventures run regularly throughout the school holidays departing and returning to Salford Quays every hour.

Barton Explorer trips run from Salford Quays making the 18ft drop through Mode Wheel Lock to Grade II listed Barton Aqueduct on a three-hour return journey.

Ellesmere Port Expeditions run in the summer months, departure is either from Salford Quays or Ellesmere Port with a return journey by coach.

Photo: Manchester River Cruises
Phone: +447906301222
Internet: <https://www.visitmanchester.com/things-to-see-and-do/tours-and-sightseeing/tours-and-tour-guides/manchester-river-cruises-p337321>
Email: info@manchesterrivercruises.com

Scranchester Food Tours



A truly immersive food tour of Manchester. Your local guide will take you on a multi-stop tour across the city offering edible insights into food history and culture long the way. The tour will include at least eight stops (adding up to a huge meal, come hungry!) revealing why the city's food and drink scene is booming.

Scranchester Tours firmly believe one of the best ways to learn about a city is through its food and drink, as well allowing guests the chance sample great food from some of the city's hidden gems the tour reveals the hidden histories behind that food; from Victorian plant hunters and the Italian ice cream families of Little Italy to the birth of

vegetarianism.

Tours in Spanish

También ofrecemos tours privados en español. Para obtener precios o para cualquier tipo de pregunta, envía un mail a scranchestertours@gmail.com

Photo: Scranchester Food Tour

Address: Mnchester M20 3FH

Phone: +447824617650

Internet: <https://www.visitmanchester.com/things-to-see-and-do/tours-and-sightseeing/tours-and-tour-guides/si-manchester-free-tours-p376761>

Email: scranchestertours@gmail.com

Si Manchester Free Tours



Everyone should be able to take a guided tour for a price they feel it is worth. Tips are invited by the guide but you will never be pressurised to tip.

Our tours are the most personal tours in the city, you may have heard of Sandemans, New Tours in Europe or other tours where you are marooned in a really big group.

In our Free tours in Manchester we want you to make the most of your experience, enabling you to ask any questions and interact with your tour guide, so they can help you with personal recommendations to make the most of your time in the city. In our tours you'll discover what to see in Manchester, the best places to visit and the main tourist attractions, however we will also take you to hidden corners that the usual tourists miss. Check out our reviews to see how much our customers love it.

We currently have three different Free Tours around Manchester:

Free Daily Tour - In English - Everyday ay 10:00 from Piccadilly Gardens. This is the best tour to get to know the city. It runs every day.

Free Tour Gratis en Español - Viernes, Sábado y Domingo - 10:00 - Nuestro tour gratuito en español es el único tour en Español en toda la ciudad de Manchester y te servirá como la mejor manera de ver la ciudad. Al final del tour los guías sugerirán una propina pero nunca te presionarán para ello.

El Tour está operativo los Viernes, Sábados y Domingos. Si l o deseas otro día, no dudes en contactarnos para conocer la disponibilidad de tour privados.

Alternative Manchester - Bilingual -

Private Manchester walking tour?

We also offer our tour guide services for private groups; we can take you anywhere in Manchester. Call us or Email us and we will get back to you quickly with a quote. If you are planning a school trip, we promise to keep everyone entertained with loads of curious stories and making the history entertaining.

Photo: Si Manchester

Address: Outside the Visitor Centre, 1A Piccadilly Gardens, Manchester M1 1RG

Phone: +447746943389

Internet: <https://www.visitmanchester.com/things-to-see-and-do/tours-and-sightseeing/tours-and-tour-guides/si-manchester-free-tours-p376761>

Email: IVO@SIMANCHESTER.COM

Skyliner Street Art Tour



Join Skyliner in learning about the creation of the Northern Quarter as we know it today, find out the major names behind some of the area's oldest

street art and those behind the most recent installations such as the Cities of Hope exhibition. Skyliner tours will identify lesser known heritage sites and highlight how modern art movements in Manchester hope to continue to drive creativity within this very unique neighbourhood.

The street art tours are the only tours of their kind in the city. They have been extensively researched through interviews with artists and they explore, not only the street art but also housing and social issues. The tours venture in Ancoats over the invisible wall known as Great Ancoats Street and investigate how art and architects worked together to create a cohesive space for living in.

Tours run fortnightly alternating between Saturdays and Sundays, 11am - 1pm.

Skyliner tours are run by Hayley Flynn and are family friendly.

Photo: Skyliner Tour
Address: Manchester UK
Phone: +447891299921
Internet: <https://www.visitmanchester.com/things-to-see-and-do/skyliner-street-art-p329101>
Email: theskyliner.org@gmail.com

Breakout



Breakout is a live escape room game - a group of friends, family or colleagues are locked in a room for an hour and have to solve a series of puzzles, tasks, riddles, and games in order to escape.

With 60 minutes on the clock, players need to search high and low for clues and codes, solve problems, and most importantly work as a team if they want to win. These are purely mental challenges and there are no strenuous physical activities involved in the games.

We are based across two sites in the Manchester city centre - this is our High Street location.

Each of our rooms is carefully designed to ensure maximum entertainment value and with a variety of different themes and difficulty levels for you to choose from, there's something for everyone. If you're looking for a chance to challenge your brain, encourage team-building, or just pass an hour doing something a bit different, then this is the activity for you!

Photo: Breakout Manchester
Address: 36 High Street, Manchester, Lancashire, M4 1QB
Phone: +44 (0)161 222 8765
Internet: <https://www.visitmanchester.com/things-to-see-and-do/breakout-high-street-p385911>

Treetop Manchester



Treetop Manchester is a truly unique family attraction that provides a woodland adventure like no other and fantastic day out for the whole

family!

Set in the beautiful woodland for Heaton Park, visitors can adventure in the high trees at Treetop Nets and Treetop Trek. Open all year round and accessible to all ages and abilities, they provide a unique environment for families to be active outdoors and have fun together.

Please note parental supervision ratios apply.

Photo: Treetop Manchester

Address: Heaton Park, St Margaret's Road, Manchester, M25 2GT

Phone: +4415394 47186

Internet: <https://www.visitmanchester.com/things-to-see-and-do/treetop-manchester-p343301>

Vegetarian Society Cookery School



Looking for something new and exciting to fill a weekend with? Here at the Vegetarian Society Cookery School, we offer a range of unique cookery experiences just perfect for when you want to do something different.

Our experienced and friendly tutors love to spend their days teaching you the ins and outs of modern veggie and vegan cooking. From a whole range of international cuisines, to vegan classes and showing off the latest trends in the culinary world, nothing puts a smile on our face more than seeing you being delighted to try the delicious creations you get to produce...

Our tutors also offer free courses to community groups and individuals who would not ordinarily come across vegetarian food or be able to take part in these amazing life-skill building courses, and every course you come on helps us to do so

much more of this amazing work!

We are always developing new courses and workshops to offer the best experience to customers, and we never stop trying out new ideas in the kitchen.

We hope to see you soon...

Photo: Vegetarian Society

Address: Parkdale, Dunham Road, Altrincham, Cheshire, WA14 4QG

Phone: +44161 926 9182

Internet: <https://www.visitmanchester.com/things-to-see-and-do/vegetarian-society-cookery-school-p377051>

Email: cookery@vegsoc.org

Clue HQ



Clue HQ - Manchester is a live "escape the room" game. Escape games are physical experiences in which the players find themselves in a room, solving puzzles and riddles, finding codes and clues, using strategy to come out of the room. Players are given a set time limit within which they have to solve the plot and escape. The games have different storylines and are set in various locations. Players can find themselves in a prison, a bunker, a pirate's cove, a house, a hotel...

Escape games give you the opportunity to solve problems as a team, use strategy, all your senses and challenge your brain. The difficulty varies. Escape rooms are targeting anyone, from 7 to 77. Groups of friends, families, couples, hens and stags, birthday parties, teambuilding for companies, Christmas parties, dates, anniversaries...

Photo: Clue HQ

Address: 4 Sheffield Street, MANCHESTER, Lancashire, M1

2ND

Opening hours: Monday - Sunday: 12:00 - 20:00

Phone: +44 333 335 0030

Internet: <https://www.visitmanchester.com/things-to-see-and-do/clue-hq-p363691>

Craft Beer Tour Manchester



Join us on a craft beer adventure as we tour Manchester and sample the best local produce that the city has to offer. We visit a range of

microbreweries and craft beer houses enjoying at least ten craft beers (around 1/3 pints each). Each venue will include a guided tasting session led by a resident expert, and one of our friendly guides will lead you around the city uncovering some of the hidden gems of Manchester.

At only £30pp, you can enjoy a tasting-filled afternoon through the streets of a city where the beer scene is booming! We can also offer private group tours on request for stag and hen parties, and corporate events. Contact us for more details.

Have a friend who would love the tour? Then why not buy a gift voucher, available on our website. We hope to see you on the tour soon!

Photo: Craft Beer Tour Manchester

Address: International House, 61 Moseley Street, Manchester, M2 3HZ

Internet: <https://www.visitmanchester.com/things-to-see-and-do/tours-and-sightseeing/tours-and-tour-guides/craft-beer-tour-manchester-p386241>

Free Manchester Walking Tours



Perfect for locals and visitors alike - this is an entertaining and comprehensive tour about what makes Manchester the city it is today. On

these walks, we visit the best-known attractions as well as the lesser-known quirks.

As the #1 rated Tour in Manchester on TripAdvisor, we believe this to be the best way to learn about the city's history and culture, orientate yourself, meet new people and learn insider tips.

So join Josh on an adventure, and uncover Manchester in the way people have for hundreds of years - on foot and for free.

If you're still interested, why not have a look through our most Frequently Asked Questions. I hope to see you on a tour soon!

Photo: Free Walking Tours Manchester

Address: Alan Turing Statue, Sackville Gardens, Manchester, Greater Manchester, M1 3HB

Opening hours: Every day, 11am

Phone: +44 (0)7478 277293

Tickets: <https://www.visitmanchester.com/things-to-see-and-do/tours-and-sightseeing/tours-and-tour-guides/free-manchester-walking-tours-p366081>

Internet: <https://www.visitmanchester.com/things-to-see-and-do/tours-and-sightseeing/tours-and-tour-guides/free-manchester-walking-tours-p366081>

DINING



Marketing Manchester

The dining scene in Manchester is more interesting and varied by the day. All manner of new restaurants, gastropubs and bars keep popping up around the city, which now ranks among the country's best and most diverse culinary destinations. A local speciality is the Manchester Egg, the city's take on the Scotch egg, which is wrapped in black pudding and sausage, then breaded and deep fried, and should not be missed.

Yang Sing



Located in the heart of Manchester's Chinatown, serving exquisite dim sum and Cantonese cuisine, the Yang Sing offers cordial old school service;

some contemporary takes on traditional Cantonese cooking and an enviable reputation as one of Manchester's finest food institutions. Serving locally sourced produce and buying seasonally, Yang Sing is a grande dame of Manchester's vibrant food and drink scene.

What began as a small family affair in 1977 has grown to become synonymous with the cultural and culinary landscape of the city; serving classic favourites from sizzling black bean topside of beef with green peppers to signature,

steamed wild seabass with spring onion and coriander. Gourmands and foodies travel from far and wide to sample Harry Yeung's famed dim sum delights and also to indulge in the extensive wine list featuring many boutique and specialist wines.

A warm and inviting restaurant, open daily from midday so whether you're dropping in for a quick dim sum lunch with family and friends or entertaining guests with a lavish banquet in the private dining and events rooms, Yang Sing is there for your every occasion.

Photo: kimberlywood / Shutterstock.com

Address: 34 Princess Street, Manchester

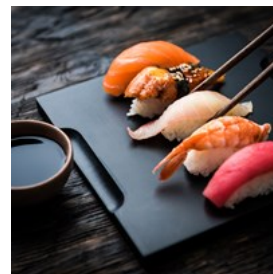
Public Transport: Princess St/Chinatown (Stop SF)

Phone: +44 161 236 2200

Internet: <https://www.visitmanchester.com/food-and-drink/yang-sing-p3111>

Email: info@yang-sing.com

Umezushi



Umezushi is a gem in the Manchester culinary scene, hidden behind its nondescript doors. As the name might suggest, it is a Japanese restaurant,

known for using only the freshest ingredients. Be sure to try the sushi and the tempura.

Photo: In Green / Shutterstock.com

Address: Unit 4, Mirabel Street, Manchester M3 1PJ

Public Transport: Victoria train st.

Phone: +44 871 811 8877

Internet: www.omezushi.co.uk

Email: enquiry@omezushi.co.uk

Sapporo Teppanyaki



Teppanyaki is a staple of Japanese cuisine, a way of cooking using an iron griddle. At Sapporo Teppanyaki the chefs will entertain you with a show

as they prepare your meal in front of your very eyes. To complete your Japanese experience Sake and Japanese cocktails, beers and whiskeys are to be found on the drinks menu.

Photo: waranya_photo / Shutterstock.com

Address: 91-93 Liverpool Road, Manchester

Opening hours: Mon-Sat 12pm-11pm, Sun 12pm-10:30pm

Phone: +44 161 979 0756

Internet: www.sapporo.co.uk

Lunya



Following on from the success of their flagship Liverpool site, Elaine & Peter Kinsella have broadened their vision to Manchester. Mr & Mrs

Lunya go to great lengths to source the best food and ingredients from the Catalan region with regular trips to their suppliers. Fabulous dishes that honour heritage and create new twists with flare stand amongst Spanish classics. Lunya also has the UK's best online Spanish food store.

Lunya's Manchester 'baby' plans to pop into the world gurgling with delights. From Eggs Flamenco at breakfast to sharing tapas at night and suckling pig banquets for hungry meat lovers.

The sumptuous deli will be open right through for those giddy diners who've had one rioja too many and decide some decadent munchies are a must for later on.

Sporting a beautiful indoor terrace, high tables and comfy banquets, there is an area to suit all diners. A mixture of Spanish and English staff will show you the warmth of the Mediterranean in the heart of bustling Deansgate.

Photo: Lunya Manchester

Address: 8 Barton Arcade, Deansgate, Manchester M3 2BB

Internet: <https://www.visitmanchester.com/food-and-drink/lunya-p313241>

Email: manchester@lunya.co.uk

Corn Exchange



Corn Exchange is a stunning renovated grade II listed building at the very heart of Manchester, housing 13 restaurants serving a variety of high

quality world cuisine. With options including Mowgli, Pho, Wahaca, Banyan Bar & Kitchen, Gino D'Acampo My Restaurant, Alston Bar & Beef and Salvi's Mozzarella Bar, there's something to suit every taste or occasion.

Since opening in 2015, the destination has quickly become one of the most popular leisure hubs in Manchester due to its individual setting and quality offering. With neighbours including Manchester Victoria Station, Manchester Arena, the National Football Museum, Selfridges and Manchester Cathedral, the location is perfect for exploring the city's most popular sights.

Photo: Corn Exchange

Address: Exchange Square, Manchester, Greater Manchester, M4 3TR

Internet: <https://www.visitmanchester.com/food-and-drink/corn-exchange-manchester-p348591>

TNQ Restaurant And Bar



TNQ is a food lovers paradise in the heart of Manchester's Northern Quarter, led by head chef Anthony Fielden. Served in a relaxed & stylish dining room, famous for its exposed wooden floor & grand windows showcasing the iconic Smithfield Fish Markets.

Bold & thought provoking contemporary British cuisine is crafted using only the finest seasonal ingredients the British Isles has to offer.

Photo: TNQ

Address: 108 High Street, Manchester M4 1HQ

Phone: +44161 832 7115

Internet: <https://www.visitmanchester.com/food-and-drink/tnq-restaurant-and-bar-p46621>

Randall & Aubin



Acclaimed Anglo-French brasserie Randall & Aubin has brought their sumptuous menu of British seafood and meat dishes to fashionable and vibrant, Bridge Street in Spinningfields. The restaurant is open 7 days a week closing slightly earlier at 8pm on a Sunday.

Randall & Aubin was established as a butcher's shop in 1911 selling only the best produce, very quickly becoming one of the finest butchers in town. For the past 20 years, the celebrated and much loved restaurant Randall & Aubin continues in that same tradition of excellence serving the freshest seafood, mouthwatering and succulent rotisserie meats with premium ingredients from carefully chosen and local suppliers where possible.

The co-founders, renowned Chef Ed Baines and businessman Jamie Poulton, after an international search felt Manchester was without doubt, the perfect place for their new home. The positivity and entrepreneurial energy of the city, the warm, welcoming community, the culinary interest towards food and the enthusiasm for a great night out attracts and suits Randall & Aubin.

Photo: Randall & Aubin

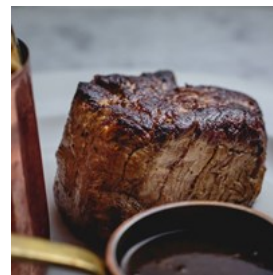
Address: 64 Bridge Street, Manchester M3 3BN

Phone: +44161 711 1007

Internet: <http://www.randallandaubin.com/manchester/>

Email: mcr@randallandaubin.com

Alston Bar & Beef



Alston Bar & Beef is proud to open its doors in Manchester after the success of the award-winning venue in Glasgow. The steak and gin bar will be bringing the top 1% of Scottish beef to Manchester along with a bar supplied with over 60 different types of gin from all over the world.

Alston's 160 cover restaurant will be the first venue in Manchester to offer Tweed Valley steak on its menu. The beef is selected by the butchers, Gilmour Butchers, and then dry aged for 35 days, for optimum flavour.

A selection of bespoke gin-infusions, created in-house will also be on offer. Each will be created, using a blend of botanicals, many of which are unique to the Manchester area, and created via a cold-compound process.

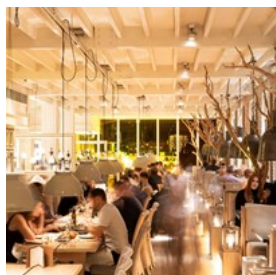
Whether you are looking for a delicious steak or

just a perfectly served G&T, Alston is the place to be!

Photo: Alston Bar & Beef

Address: Corn Exchange, Cathedral Street, Manchester, Greater Manchester, M4 3TR
Phone: +44 (0)161 804 5555
Internet: <https://www.visitmanchester.com/food-and-drink/alston-bar-and-beef-p355181>

Australasia



A million miles away from anything else in Manchester, Australasia isn't bound by tradition or a set of ideas about how an ingredient should be cooked, what it goes with or how it should be served and award winning chef and former young Australian chef of the year, Paul Greening, epitomises this ethos perfectly.

Its strong ties with China and Japan have also helped determine the style of cooking, particularly the Japanese desire for perfection.

Intriguing from the outside and beautiful within, the bespoke glass entrance on Spinningfields Square, Deansgate, is sure to catch the eye, sweeping guests downstairs to the irresistible charms of the restaurant's amazing cuisine and relaxed ambience.

With a 3am licence on Friday and Saturday, the late night bar will boast a compelling list of signature cocktails, an impressive wine list and electrifying guest DJs to keep the party going.

Photo: Australasia

Address: 1 The Avenue, Spinningfields, Manchester, M3 3AP
Phone: +44 (0)161 831 0288
Internet: <https://www.visitmanchester.com/food-and-drink/australasia-p206681>

Shoryu Ramen



Shoryu Ramen are the go to in Manchester for delicious ramen (Japanese noodles) and other Japanese sides such as karaage chicken, char

siu barbecue pork belly Shoryu buns and soft shell crab tempura. Founder Tak Tokumine and Executive Chef Kanji Furukawa, both born and bred in Hakata, have dedicated their lives to bringing a taste of their hometown to the UK. Their authentic Hakata tonkotsu ramen is made with a thick, rich, white pork soup and thin, straight ramen noodles, although they also offer gluten free and vegetarian options.

Alongside their famous ramen, Shoryu Ramen offer an excellent selection of premium spirits, expertly mixed cocktails and sake to complement any meal, making it the perfect spot for pre-theatre bites or just to take a break from the bustling city.

Located in the heart of Manchester's city centre, just a short walk from Manchester Piccadilly Station and the famous Arndale shopping centre, Shoryu Ramen look forward to welcoming diners daily from 11.30am for the flavours of Japan. Recommended in the 2014, 2015, 2016 and 2017 Michelin Guides, experiencing Shoryu Ramen is a must do for visitors and locals alike, simply book online or walk in.

Photo: Shoryu Ramen

Address: 1 Piccadilly Gardens, Manchester M1 1RG
Internet: <https://www.visitmanchester.com/food-and-drink/shoryu-ramen-p351541>
Email: Hello@shoryuramen.com

Banyan Bar & Kitchen



During the day, the spacious and relaxing bar areas with floor to ceiling windows offer customers a perfect place to meet up for coffee and cake, breakfast/brunch, sharing boards, a nice chilled glass of champagne or a cocktail crafted by award winning mixologists.

The comprehensive drinks menu includes an incredible array of cocktails, offering a mixture of the classics and some with a Banyan twist. The beer and wine list has been personally chosen by some of the best beer and wine connoisseurs in the country ensuring all tastes and palates are catered for.

In the evening, the Kitchen area seats 90, offering meals for everyone in a more formal setting. A huge open kitchen and a 20 cover Chef's Table form part of the dining experience with attention to detail on the menu second to none, using fresh local produce to provide customers with a meal of the finest quality.

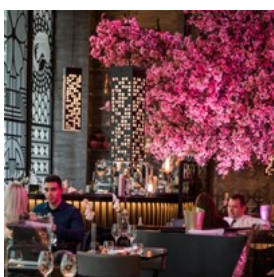
Photo: Banyan

Address: Banyan, Manchester, Exchange Square, Manchester, Greater Manchester, M4 3TR

Phone: +44 (0)161 832 4798

Internet: <https://www.visitmanchester.com/food-and-drink/banyan-bar-and-kitchen-p315031>

Tattu



The menu at Tattu focuses on Dim Sum and small plates created by a talented team led by head chef Clifton Muil. The bar provides an extensive cocktail menu and wine list including a selection

of sake.

There is both high table seating and intimate booth seating for groups, with a menu of champagne and bottle serves available. The decadent Tattu Parlour is the venue's exclusive private room, serviced by its own entrance, bar and restroom facilities. The Parlour is available for bookings of up to 30 people for a seated dining experience or up to 60 standing for a canapé reception or event.

Photo: Tattu

Address: 3 Hardman Square, Manchester M3 3EB

Internet: <https://www.visitmanchester.com/food-and-drink/tattu-p327081>

The Anthologist



The Anthologist is Drake & Morgan's second site in the city centre, the 'big sister' to The Refinery in Spinningfields, bringing a constant flow of new drinks and dishes from across the globe, a unique range of innovative cocktails and all-day dining.

This new northern bar and restaurant is located in one of Manchester's most sought-after locations, offering an everyday escape right in the heart of the city. The beautiful external planted terrace offers an all-year round alfresco drinking and dining, perfect for people-watching with a glass of rosé.

Open seven days a week, The Anthologist features an open kitchen and a striking cocktail bar, with distinctive dining areas complemented by the soft finishing touches of copper herb pots, warm tea lights and gorgeous cushions and blankets. The Anthologist offers both a chic and

cosy setting for everything from quick breakfast meetings through to long, lazy brunches and cocktails with the girls.

Facilities: Wifi complimentary, Kids Menu, High chairs, Disabled Toilets, Terrace, Food and Drink, Bar area

Photo: The Anthologist

Address: One St Peters Square, Manchester, M2 3AE

Phone: +44161 509 5085

Internet: <https://www.visitmanchester.com/food-and-drink/the-anthologist-p376211>

Vermilion Restaurant and Cinnaba



Designed by worldwide renowned designers such as Miguel Cancio Martins (Buddha Bar, Paris / Alain Ducasse's Crystal of Marakech), Ken Winch (Buckingham Palace), Warmrain (Sketch, London) and Firefly (Hakkasan, London) to create the ultimate Asian Escapism.

Vermilion & Cinnabar is a huge 3 storey Asian Wonderland that includes a Restaurant, Cocktail Lounge, Club, Events Hall and Art Gallery; its unique décor, electric ambience, attention to detail and the Restaurant's exquisite Thai & Indian cuisine and made Vermilion & Cinnabar a landmark for Manchester, receiving amazing reviews from Wallpaper magazine, The Guardian, Tim Burton, Tatler, David Cameron, Arena Magazine and GQ.

Photo: Vermilion Restaurant

Address: Lord North Street, Off Hulme Hall Lane, Manchester, Greater Manchester, M40 8AD

Phone: +44161 202 0055

Internet: <https://www.visitmanchester.com/food-and-drink/vermilion-restaurant-and-cinnabar-p98411>

Wood Restaurant



The concept of WOOD - Manchester is unintimidating high end dining. They bring together passion and creativity with powerful

flavours - delivered with playful authenticity.

WOOD - Manchester is somewhere you can enjoy a stylish yet relaxed dining experience.

Simon will be on site daily working with his team to create incredible food for everyone who visits WOOD, from Manchester and Beyond...

Former Data Manager, Simon started cooking when he could 'reach the top of an oven'. His passion began when, at eight years old, he won a competition to be anything for a day and he chose to be a chef. Thirty years later Simon's MasterChef win saw him fulfilling a dream he has had since he was young.

Since winning MasterChef Simon has worked with Marcus Wareing, Theo Randal and Simon Rimmer before opening his own restaurant. Since 2015 he has also been executive chef at Oldham Athletic FC and Oldham Event Centre, including the hugely successful 'The Boardroom by Simon Wood'.

Photo: Wood Manchester

Address: Jack Rosenthal Street, Manchester, Greater Manchester, M15 4RA

Phone: +44161 236 5211

Internet: <https://www.visitmanchester.com/food-and-drink/wood-p366931>

Email: marketing@woodmanchester.com

Zouk Tea Bar & Grill



Founded by two entrepreneurial brothers, Zouk is a multi-award-winning restaurant that offers refreshing Indian and Pakistani cooking for the health conscious dine, with a menu and atmosphere infused with vitality, fun and passion. A restaurant for food lovers, signature dishes include their famous Indian Sajji Roasts which offer a whole leg of lamb or whole roast chicken marinated in spices and served with spicy roast potatoes and delicious gravy, or you can opt for their classic Lahori dishes such as Lamb Niharai, Magaz and Paya. Alternatively try the seafood menu or the renowned regional monthly specials.

Customers can book into special classes and learn first-hand from Zouk's Head Chef how to create classic dishes using the Company's signature techniques and ingredients. The class offers a chance for customers to pick up a few trade secrets and learn how to create their favourite Zouk recipes at home.

Photo: Zouk Tea Bar & Grill
Address: Unit 5 Quadrangle, Chester Street, Manchester, Greater Manchester, M1 5QS
Phone: +44161 233 1090
Internet: <https://www.visitmanchester.com/food-and-drink/zouk-tea-bar-and-grill-p118691>
Email: info@zoukteabar.co.uk

Don Giovanni



Head to award-winning Italian Don Giovanni on St Peter's Square for hand-crafted cocktails, a superb lunch menu and pre-theatre dining that

will start your evening on a high.

Situated in the heart of Manchester's theatre strip, Don Giovanni is the city's oldest Italian restaurant and has been feeding the public for over 30 years. It is perfectly positioned for the Palace Theatre, Opera House, Manchester Central, Bridgewater Hall and many other city centre attractions.

Showcasing freshness and quality first; Don Giovanni integrate traditional Italian culture into every dish with homemade pizza, bread, pasta and desserts created freshly in house.

All dishes are prepared using the finest seasonal ingredients, sourced locally from Italian and British producers. Their head chef regularly scours the local markets for new ingredients and inspirations for their often-changing a la carte menu.

Don Giovanni have brought multi-Michelin starred chef Jean-Christophe Novelli to Manchester and are running a series of meet-and-greet events with him throughout the year. He has created a selection of bespoke dishes for the restaurant which can be ordered from their a la carte menu.

Photo: Don Giovanni
Address: Unit 1 & 2 Peter House, Oxford Street, Manchester, Greater Manchester, M1 5AN
Phone: +44 (0)161 228 2482
Internet: <https://www.visitmanchester.com/food-and-drink/don-giovanni-p3401>

Grafene



Their ever-evolving menu is a refined take on British eating at its flavoursome best, sourced from local and artisan suppliers, inspired by what great British food should be, enjoyed in a relaxed dining setting.

The talented kitchen, headed by award-winning Executive Chef Stephen Moore, serve up quality flavours and unique dishes at every plate, from stunning mains to flawless desserts. But Grafene is anything but formal. Join them for a relaxed brunch, enjoy freshly baked bar snacks whilst catching up with friends or colleagues and stop by to try one of their experimental cocktails at the bar.

Photo: Grafene

Address: 55 King Street, Manchester, Lancs, M2 4LQ

Internet: <https://www.visitmanchester.com/food-and-drink/grafene-p330671>

Hard Rock Cafe



Located in the city centre, the UK's largest Hard Rock serves what can only be described as "The Official Food of Rock", generous drinks and an awe-inspiring collection of rock memorabilia.

Visit Hard Rock Cafe Manchester for a family friendly dining experience that truly rocks! They're conveniently situated within The Printworks entertainment complex, close to the Arndale Shopping Centre and opposite the National Football Museum so drop in and see how we can rock your world!

The venue has an awe inspiring collection of unique rock memorabilia, with priceless pieces from The Beatles, Oasis and Elvis adorning the walls. Please let us know if you would like to arrange a tour with one of our Masters of Memo to enhance your visit.

We can open as early as 9am for tours and 11am for early lunches. We have various set menu options available for groups of 20 or more and can accommodate up to 100 people in a group.

Our Rock Shop stocks a wide range of official Hard Rock Cafe Manchester merchandise from Tshirts to glassware and umbrellas for you to buy as a memento of your visit to our beautiful city.

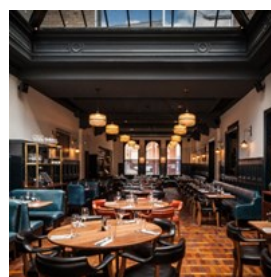
Photo: Hard Rock

Address: The Printworks, 27 Withy Grove, Manchester, Greater Manchester, M4 2BS

Phone: +44 (0)161 831 6700

Internet: <https://www.visitmanchester.com/food-and-drink/hard-rock-cafe-p4361>

Hawksmoor



Hawksmoor Manchester is a British steakhouse and cocktail bar located in a late Victorian courthouse on Deansgate. Their menus revolve around the best ingredients they can find - whether it be beef from ethically-reared, grass-fed native cattle, sustainable seafood from around the British coast or seasonal fruits and vegetables. All cooked simply and served by friendly people who love what they do. This is accompanied by a list of carefully selected wines, original cocktails and beers brewed locally in the North West.

Photo: Hawksmoor Manchester

Address: 184-186 Deansgate, Manchester, Greater Manchester, M3 3WB

Internet: <https://www.visitmanchester.com/food-and-drink/hawksmoor-manchester-p312051>

Al Bacio



Al Bacio is located in the city centre and offers fine and fresh classical Italian dishes. This restaurant is known for its friendly atmosphere and is great

for any occasion, from business lunches to a quick coffee break.

Photo: Dima Sobko / Shutterstock.com

Address: 10-14 South King Street, Manchester

Public Transport: John Dalton St/St James Sq (Stop WB)

Phone: +44 161 832 7669

Internet: www.al-bacio.co.uk

Email: info@al-bacio.co.uk

Tampopo



A laid-back and inexpensive place with long tables and benches, Tampopo is a great option when you're looking for a quick bite to eat. Asian

flavours fill the menu, with options such as noodles, curries and stir-fries.

Photo: Silatip / Shutterstock.com

Address: Quay House, Quay Street, Manchester

Phone: +44 161 832 2764

Internet: www.tampopo.co.uk

Email: info@tampopo.co.uk

Evuna



This fine Spanish restaurant and wine bar is situated in the heart of Manchester, offering fine à la carte dining. Evuna also offer a wine

merchant service where you may take your favourite wines home by the bottle or case.

Photo: naito29 / Shutterstock.com

Address: 277 - 279 Deansgate, Manchester

Opening hours: Mon 12am-10pm, Tue-Sat 12am-11pm, Sun 1pm-9pm

Phone: +44 161 819 2752

Internet: www.evuna.com

Email: enquiries@evuna.com

CAFES



Marketing Manchester

Manchester has historically been overrun with big chain coffee shops (49 Costa Coffees and 17 Starbucks), but a new wave of independent, high-quality, and often quirky cafes and tea houses has been taking over the city, offering more diverse alternatives and more original products. Give these cafes a try, support local entrepreneurs, and while you're at it, enjoy a truly delicious cup of coffee.

Teacup Kitchen



The menu at Teacup Kitchen has a mix of traditional British and Asian flavours, and of course, a wide variety of teas. They have plenty of cakes and other desserts to choose from, as well, a special favourite being the pistachio and almond cake.

Photo: showcake / Shutterstock.com
Address: 55 Thomas Street, Manchester
Phone: +44 161 832 3233
Internet: www.teacupandcakes.com
Email: eat@teacupandcakes.com

Sugar Junction



Sugar Junction was created out of a love for all things vintage, baking and wholesome food. The company was started by a mother-daughter team who strive to provide high quality food with great service in a comfortable environment. They serve home-baked cakes and about 25 different types of tea.

Photo: Africa Studio / Shutterstock.com
Address: 60 Tib St, Manchester
Public Transport: Oldham St/Thomas St.
Phone: +44 161 839 1444
Internet: www.sugarjunction.co.uk
Email: sugarjunctionnq@gmail.com

Hey Little Cupcake!



The imaginative and beautifully homemade cupcakes and cakepops will catch your eye when you enter this small but bright café and bakery.

To accompany your carefully selected pastry, coffee, hot chocolate, tea or homemade lemonade are all on offer.

Photo: Africa Studio / Shutterstock.com
Address: Little Quay Street, Spinningfields, Manchester
Public Transport: St. Peter's Square.
Phone: +44 161 832 0260
Internet: www.heylittlecupcake.co.uk
Email: hello@heylittlecupcake.co.uk

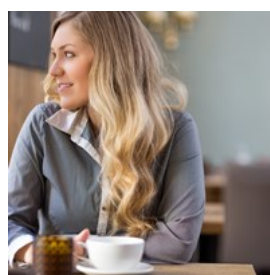
Bonbon Chocolate Workshop



If you get tired of traditional English tea, Bonbon Chocolate Workshop is the place to go. Indulge in the smoothest hot chocolate made from the best quality cocoa products. If you're feeling naughty, you could also buy some handmade truffles to take home with you.

Photo: Jiri Hera / Shutterstock.com
Address: 9 John Street, Manchester
Phone: +44 161 839 4416
Internet: www.bonbonchocolate.co.uk
Email: hello@bonbonchocolate.co.uk

Takk



Icelandic-inspired Takk is an artisan coffee house and great hipster hangout. They have a passion for good food and coffee, using specialist dairy, meat and vegetable producers and preparing some of the best coffee in town.

Photo: Tyler Olson / Shutterstock.com
Address: 6 Tariff Street, Manchester
Opening hours: Mon-Fri 8am-5pm, Sat 9am-5pm, Sun 10am-5pm
Phone: +44 7989 583 576
Internet: www.takkmcr.com

Email: hello@takkmcr.com

Earth Cafe



Earth Cafe is located in a basement in a Buddhist centre, so naturally, it is an organic vegan cafe. Their ever-changing menu features delicious

vegan meals made daily with the freshest seasonal produce. Try also something from the juice bar, or some organic teas and coffee with a dairy-free cake.

Photo: Lukas Gojda / Shutterstock.com

Address: 16-20 Turner St, Manchester

Opening hours: Mon-Fri 10am-4pm, Sat 10am-5pm

Phone: +44 161 834 1996

Internet: www.earthcafe.co

Email: info@earthcafe.co

Annies Manchester



Located just off St. Ann's Square on Old Bank Street, Annies is tucked away from the hustle and bustle and the interior reflects just that with its

cosy feel, wooden panelling and comfy armchairs designed to make you feel right at home.

Head chef Richard Moore has reflected this cosy British feel in his menu. To start, diners can choose from the likes of Bury Black Pudding Spring Rolls, Potted Ham Hock and Scallops. For mains there's Fish, Chips & Mushy Peas, Braised Lamb Shank and Annies Sausage & Mash. There's also a delicious pie menu including 3 Cheese & Onion Pie, Fish Pie and Steak & Ale Pie.

Annies also serves Afternoon Tea, Champagne

Tea, Traditional Cream Tea and a daily lunch menu, as well as morning coffee and pastries from 8.30am.

Photo: Annies Manchester

Address: 5 Old Bank Street, Manchester, Lancs, M2 7PE

Phone: +44 (0)161 839 4423

Internet: <https://www.visitmanchester.com/food-and-drink/annies-p261811>

Tariff & Dale



To keep the original features in place, the tradesmen entrance was made the front door, a glorious lift shaft became a cosy booth, the loading

bay is a private drinking space, and the hydraulic fabric press takes pride of place in the entrance way.

The spacious ground floor bar serves high quality drinks of all descriptions. A carefully curated list of cocktails takes nine classics and creates three versions of each - one classic and two more individual twists on the original, invented by the bar team.

Photo: Tariff & Dale

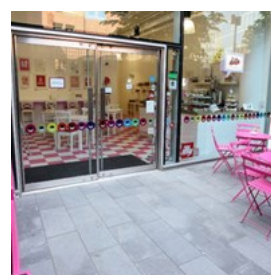
Address: 2 Tariff Street, Manchester, M1 2FF

Phone: +44161 710 2233

Internet: <https://www.visitmanchester.com/food-and-drink/tariff-and-dale-p311851>

Email: hello@tariffanddale.com

Hey Little Cupcake!



Be sure to make a beeline for Hey Little Cupcake!, which is tucked away along the leafy walkway connecting Hardman

Street to Atkinson Street in Manchester's super-chic Spinningfields.

Scrumptious signature flavours such as the red velvet, hazelnut cookie and Victoria sandwich cupcakes neatly line the counter; as well as seasonal specials, ooey-goey brownies, mouth-watering slabs of rainbow cake, cute cakepops and delicious illy coffee and Teapigs is also served; the perfect complement to your treat of choice.

For those in search of something a little larger, the talented team of bakers can whip up layer cakes and giant cupcakes to order; which can be personalised to suit any occasion and taste and are a fantastic alternative to regular cupcakes.

If the thought alone of row upon row of beautifully crafted sugary goodies isn't enough to tempt you in, then we guarantee the sweet aroma will, as all produce is freshly baked every day in the shop's busy little kitchen.

Photo: Hey Little Cupcake

Address: Hardman Street, Manchester, Lancs, M3 3HF

Phone: +44 (0)161 832 0260

Internet: <https://www.visitmanchester.com/food-and-drink/hey-little-cupcake-p273641>

BARS & NIGHTLIFE



Marketing Manchester

Manchester boasts one of the UK's strongest and most diverse nightlife scenes, offering plenty of alternatives for drinking, partying and catching world-class concerts and performances.

Hacienda was once perhaps Europe's most famous club (back in the 'Madchester' days), and though it is no longer in operation, the adventurous spirit of the city's nightlife remains intact in the numerous venues in the Northern Quarter, Castlefield and Gay Village.

Dry Bar



Dry Bar was first on the scene in the Northern Quarter. The establishment was opened in 1989 by Factory Records (the record label of such Manchester legends as New Order) and to this day has lost none of its cool.

Photo: AntGor / Shutterstock.com

Address: 28-30 Oldham Street, Manchester

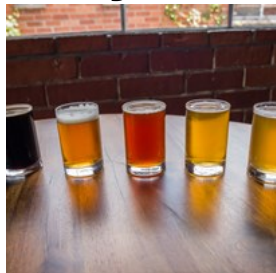
Public Transport: Oldham St/Thomas St.

Phone: +44 161 236 9840

Internet: www.drybar.co.uk

Email: info@drybar.co.uk

BrewDog Manchester



BrewDog is a large chain of pubs with tons of personality. They boast that they brew "uncompromising, bold and irreverent" beer, as a

form of "rebellion against faceless corporate bureaucracy and the bland pathetic beer they industrially produce." With that sales pitch, you know you're in for something special at BrewDog.

Photo: mdurson / Shutterstock.com

Address: 35 Peter St, Manchester

Opening hours: Mon-Sat 12pm-1am, Sun 12pm-12am

Phone: +44 161 832 1922

Internet: www.brewdog.com/bars/uk/manchester

Email: manchesterbar@brewdog.com

Épernay Champagne & Cocktail Bar



Épernay Champagne & Cocktail Bar is one of the city's most glamorous nightlife establishments, with classy decor and exposed brick walls. The

space has a great balcony, as well, where many choose to enjoy their drink, a selection made from 47 champagnes, 22 wines and 24 cocktails.

Photo: g-stockstudio / Shutterstock.com

Address: Unit 1a, Great Northern Tower, Watson St, Manchester

Opening hours: Mon-Thu 4pm-1:30am, Fri-Sat 12pm-1:30am, Sun 12pm-12am

Phone: +44 161 834 8802

Internet: www.epernaymanchester.co.uk

Email: bookings@epernaymanchester.co.uk

Manchester235



Manchester235 is the North West's premier entertainment and gaming destination. Located in the Great Northern Warehouse, this

spectacular Vegas-style casino offers an unrivalled evening of entertainment boasting two restaurants, multiple floors of gaming and a glamorous cocktail bar

A vibrant casino, Manchester235 exudes a constant buzz about the place, with its slot machines, electronic casino games, gaming tables and poker.

The Poker Lounge is a dedicated Poker space with an electric atmosphere. It is home to the best cash games in the North West 7 days a week and 24 hours at weekends. There are also a variety of weekly scheduled tournaments.

James Martin Manchester located on the top floor of the venue features the simple, sensational, seasonal cuisine of celebrity chef James Martin. This is where you will find the very best in modern British food, starring fresh, locally sourced ingredients.

Photo: Manchester265 Facebook

Address: The Great Northern, 2 Watson Street, Manchester M3 4LP

Phone: +44161 8201941

Internet: <https://www.visitmanchester.com/things-to-see-and-do/manchester235-p42671>

Email: info@manchester235.com

Band on the Wall



Band On The Wall has been one of the cornerstones of Manchester's music scene for the greater part of the last

century.

Occupying a grand old Victorian pub, it was at the centre of Manchester's punk scene in the late 1970s where Buzzcocks, The Fall and Joy Division first played. Since then it has played host to many internationally acclaimed artists including Mica Paris, Bjork, Art Blakey, Carleen Anderson, Simply Red and countless others. It also has a global reputation for showcasing a vast array of accomplished and respected artists from around the world. In doing so it is internationally known as a venue that promotes equality and diversity through music. This unique and pioneering programme of music has thrilled hundreds of thousands of people over the years.

Closed in 2005 for redevelopment, the venue re-opened in September 2009 with state-of the art facilities which includes a new public space, The Picturehouse is adjacent to the venue and located in a Grade 2 Listed building that was a cinema in the early 1900s. It serves a selection of food and drinks and is the perfect place to meet friends before a concert. The Picturehouse also houses the venue's box office where tickets can be purchased or collected for concerts at the venue.

Photo: Band on the Wall

Address: 25 Swan Street, Northern Quarter, Manchester, Greater Manchester, M4 5JZ

Phone: +44 (0)161 834 1786

Tickets: <https://www.visitmanchester.com/things-to-see-and-d>

[o/band-on-the-wall-p327461](https://www.visitmanchester.com/things-to-see-and-do/band-on-the-wall-p327461)

Internet: <https://www.visitmanchester.com/things-to-see-and-do/band-on-the-wall-p327461>

The Birdcage



The Birdcage nightclub is in the heart of Manchester city centre! Part of Manchester Arndale and across from the Printworks, the

Birdcage has been home to the most entertaining nights and parties since it opened in November 2006.

Every Saturday, The Birdcage offers a unique nightclub and cabaret experience! Vegas style shows are performed throughout the night featuring flamboyant drag artists, elegant showgirls and male dancers.

Photo: The Birdcage

Address: Withy Grove, Manchester, Greater Manchester, M4 3AQ

Phone: +44 (0)161 832 1700

Internet: <https://www.visitmanchester.com/food-and-drink/the-birdcage-p96631>

The Deaf Institute



The Deaf Institute is an independent fun loving bar and venue, spread across 3 floors, with 3 bars, a kitchen and a roof terrace. Housed in a

historic Manchester building originally built in 1878 as The Deaf Institute, the building was derelict when they first got their hands on it and they have refurbished it back to something they hope approaches its original glory. Located just off the bustling Oxford Road, the venue is based in the heart of the Manchester Metropolitan University Campus. In the main bar they have

big sharing tables and leather booths, expect fresh and tasty food, a sweetie shop inspired cocktail list, frozen cocktails, local ales and craft beers served up to a rock 'n roll sound track.

The music hall on the first floor hosts live gigs, comedy and club nights in a ballroom under a massive mirror ball, with velvet curtains, a domed ceiling, tiered seating and parrots on the wall.

The Deaf Institute have been lucky enough to see a solid procession of world class talent on their humble little stage over the years, with some of today's biggest names in music gracing the stage in the early stages of their career. The basement bar is a dandyish den perfect for parties or club nights.

Photo: The Deaf Institute

Address: 135 Grosvenor Street, Manchester, Greater Manchester, M1 7HE

Internet: <https://www.visitmanchester.com/food-and-drink/the-deaf-institute-p311461>

Flight Club



Flight Club is the home of Social Darts. They've taken the traditional game of darts and supercharged it, developing fast and exciting multiplayer games to create a social experience like no other for groups of 3 to 300.

New to the city's vibrant social scene this Autumn, Flight Club Manchester's décor spectacularly combines the heritage of darts, the pub and the fairground, with a unique twist.

Whether you're looking for a new lunch spot, hosting a team social or just fancy catching up

over a cocktail at the bar - this amazing space on King Street is perfect for any occasion.

With a range of private and semi-private event spaces available to book, a beautiful bar and a mouth-watering menu of sharing plates, pizza paddles and delicious signature slushy cocktails - it's got everything you need to kick start an unforgettable social adventure.

Book now and eat, drink, dance and get your game on!

Photo: Flight Club

Address: Ship Canal House, 98 King Street, Manchester, Greater Manchester, M2 4WU

Internet: <https://www.visitmanchester.com/food-and-drink/flight-club-p383601>

Gorilla



Gorilla is a bar, kitchen, live venue and club space under the railway tracks on Whitworth Street West. Breakfast is served from 11.30am until 4pm.

All other food is served from 11.30am until late. Choose from award winning royal breakfasts and Sunday roasts, chargrilled burgers and fancy sandwiches. There's a grilled selection too; choices include steak on the rib, spatch-cooked chicken with lemon and fresh herbs, halloumi and chicken kebabs. And, like all of Trof's venues, they are served by their own in-house bakery, which means that the sourdough, brioche and maple and pecan muffins couldn't be any fresher.

On the drinks list, they have a full menu of cocktails and shakes, alongside the best in bottled and canned beers, fine wines and fair-trade coffees. And there's a second bar to

explore too. The mezzanine bar at Gorilla hosts a Gin Parlour, a relaxed and sophisticated den dedicated to the consumption of glorious gin.

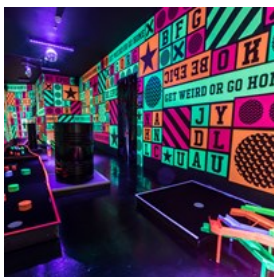
Photo: Gorilla Manchester

Address: Whitworth Street West, Manchester, Greater Manchester, M1 5WW

Phone: +44 (0)161 4070301

Internet: <https://www.visitmanchester.com/food-and-drink/gorilla-p260821>

Junkyard Golf



Welcome to Junkyard Golf Club! Home of crazy golf, booze and bad puns. Get excited on three mashed up 9-hole crazy golf courses created from pre-loved and reclaimed random shizzle. Groups can putt their way through all sorts of bizarre holes; think UV slides, UFC bear cages, a hip hop farm and a tree house bar!

MEET THE COURSES

BOZO

Roll up, Roll up! It's the greatest show on earth - or somethin' like that. This course is all about dark fairgrounds, circus freaks and twisted clowns. Winner takes it all in our homage to all things carnival! Check out the freak show Ferris Wheel, lost Fortune Tellers, Hall of Mirrors, but avoid the pretty sh*t scary clowns.

#COURSEBOZO

PABLO

Welcome to the jungle, you'll have fun and games! Putt your way through a building site, a Gun 'N Roses themed tree house, past a deep-cave-bear-wrestling-cage and a Rihanna themed forest bathroom...Not to forget the oil-soaked ocean and Rio-On- Sea! What is golf?

Baby don't hurt me. Don't hurt me. No more...
#COURSEPABLO

GARY

Time to take our scrapyard challenge. Wind your way through towers of tyres, written-off cars and auto-junk. Take on the giant loop the loop of Tyre-son Fury, putt on the top of a mini and down a slide, before you find yourself in the back of a van full of priceless art. And of course, it all ends up in Gary's UV garage rave...don't be a spanner, let's go!

#COURSEGARY

Photo: Junkyard Golf

Address: First Street, Whitworth Street, Manchester, Greater Manchester, M15 4FN

Internet: <https://www.visitmanchester.com/things-to-see-and-do/junkyard-golf-club-p317721>

Bluu



Bluu is one of the most popular places in the Northern Quarter, comprising a bar, restaurant and terrace. It boasts a trendy mix of vintage furniture with 1980s sensibilities, paired with a soundtrack of soul, funk, disco and house.

Photo: urbazon / Shutterstock.com

Address: Smithfield Market Buildings, Thomas St, Northern Quarter, Manchester

Public Transport: Manchester Picadilly Train Station

Phone: +44 161 839 7195

Internet: www.bluu.co.uk

Email: manchester@bluu.co.uk

Peeveril of The Peak



It is said that pub culture is under threat in England, but this does not apply to Manchester. One of the best pubs is to be found in a green tiled building surrounded by modern office buildings: the 200-year-old Peeveril of the Peak.

Photo: William Perugini / Shutterstock.com

Address: 127 Great Bridgewater Street, Manchester

Public Transport: Oxford road train station

Phone: +44 161 236 6364

Email: ray_martin_92@hotmail.com

The Comedy Store



Take part in the prodigious northern comedy scene with a visit to the Manchester Comedy Store. You are guaranteed to have a good laugh, and may even get the chance to catch a nationally or internationally renowned comedian in action.

Photo: aerogondo2 / Shutterstock.com

Address: Arches 3 and 4 Deansgate Locks, Whitworth Street West, Manchester

Public Transport: Deansgate train station

Phone: +44 161 839 9595

Internet: www.thecomedystore.co.uk/manchester/

DAY TRIPS



Marketing Manchester

With Manchester's position in the heart of the UK, it's the perfect gateway to the North of England.

If you're staying for a little longer than a weekend, there's stunning national parks, historic cities and more cosmopolitan destinations all within easy reach of the city. Explore the natural beauty of the Lake District or Peak District National Parks; the charm of Chester or York; or the vibrant Liverpool and Leeds. All can be done in a day from Manchester by rail or road. If you're planning your visit and want everything taken care of, there are packages available which include rail travel, Meet & Greet, tours and attractions.

Busy Bus Lake District Adventure Tour



This is our award-winning Full-Day / 190-mile Lake District Adventure tour departing at 08:45 am from Manchester. Your tour is fully escorted and narrated with a jolly driver and knowledgeable escort who, invariably, will become more of a friend than a tour guide! Every passenger receives special attention and is encouraged to participate in the day as much as possible to ensure that you have a wonderful time with us.

ITINERARY & THINGS YOU'LL EXPERIENCE

After we've waved farewell to the spectacular City of Manchester, we'll hit the road to the legendary land of The Lake District in a 2-hour partially-narrated journey, navigating a spectacular section of the M6 motorway, passing Preston and Lancaster. On a clear day you'll see the famous British "backbone" called The Pennines.

Photo: Busy Bus

Address: The Station, Manchester Airport, Malaga Avenue, Ringway, Greater Manchester, M90 3RR

Phone: +44844 585 4444

Internet: <https://www.visitmanchester.com/things-to-see-and-do/busy-bus-lake-district-adventure-tour-p377291>

Liverpool and The Beatles Story Day Trip from Manchester



Liverpool has a unique culture and heritage, with a large collection of museums and two magnificent cathedrals.

It's also a city with a reputation; a reputation for music, comedy, football and, at the heart of all of this, its people.

What's included in your day trip to Liverpool from Manchester:

Meet and Greet Service at The Mayfield Bar, Piccadilly station to receive your train tickets and a welcome pack.

Return Train from Manchester to Liverpool

Sightseeing bus tour with live guide commentary

Visit to Britain's largest Anglican cathedral, finished in 1978 after 74 years of construction.

The Beatles Story

River Explorer Cruise aboard the world-famous

Mersey Ferry

The Albert Dock

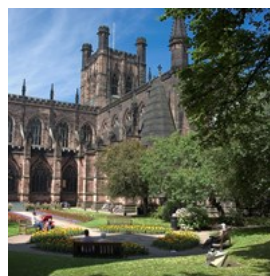
Free entrance to Liverpool's best attractions, including the Albert Dock, Liverpool Cathedral, Museum of Liverpool, Maritime Museum, Tate Liverpool, Walker Art Gallery, The Bluecoat, St George's Hall, The Metropolitan Cathedral and the World Museum.

Photo: The Beatles Story

Address: Manchester Piccadilly, Manchester, Greater Manchester, M1 2BN

Internet: <https://www.visitmanchester.com/things-to-see-and-do/liverpool-and-the-beatles-story-day-trip-from-manchester-p350521>

Historic Chester with lunch in the Cathedral Day trip



Chester is one of the UK's most popular city destinations with cobbled streets, hidden cellars and quirky lanes to discover. Walk along the

famous Roman Walls (free entry) that encircle the city centre or visit Chester Cathedral (free entry), founded as a Benedictine monastery more than 800 years ago. Don't miss 'The Rows', the 700-year-old, two-tiered covered shopping galleries, offering an extensive choice of independent shops.

What's included in your day trip to Chester:

Meet and Greet Service at Manchester

Piccadilly station to receive your train tickets and a welcome pack.

Return train from Manchester to Chester

Chester city walking tour with a professional guide

Chester Cathedral and lunch in the Refectory Cafe

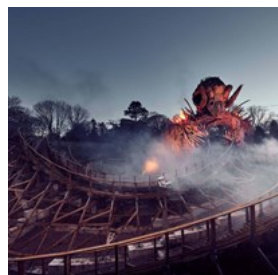
Free entrance to top Chester attractions - City Walls, Grosvenor Museum, The Roman Gardens and the 700-year-old 'The Rows' Shopping Galleries.

Photo: Manchester Sightseeing Tours

Address: Manchester Piccadilly Station, Manchester, Greater Manchester, M60 7RA

Internet: <https://www.visitmanchester.com/things-to-see-and-do/historic-chester-with-lunch-in-the-cathedral-day-trip-p348811>

Alton Towers Theme Park & Resort Day Trip



Alton Towers Resort is home to Britain's best loved theme park with great children's attractions; ground-breaking,

white-knuckle roller coaster rides; special events and much, much more.

What's included in your day trip to Alton Towers:

Meet and Greet Service at Manchester Piccadilly Station to receive your train tickets and a welcome pack.

Return train from Manchester to Stoke on Trent

Private transfer from Stoke on Trent Station to Alton Towers Resort

Day ticket to Alton Towers Theme Park*

Please note all day trips by train are self-guided/unescorted.

*Note: Opening times vary throughout the year. Please check Alton Towers' website for details.

Photo: Manchester Sightseeing Tours

Address: Manchester Piccadilly Station, Manchester, Greater

Manchester, M60 7RA

Internet: <https://www.visitmanchester.com/things-to-see-and-do/alton-towers-theme-park-and-resort-day-trip-p369221>

Lake District - Cruise, Poetry and Grasmere Gingerbread Day Trip from Manchester



With its striking scenery and connections with the poet William Wordsworth, the UNESCO Lake District National Park offers a great day out and a truly memorable experience.

What's included in your day trip to the Lake District from Manchester:

Meet and Greet Service at Manchester Piccadilly Station

Return train from Manchester to Windermere

Full day bus travel in the central lakes zone - the route stops in Windermere, Rydal, Grasmere, Ambleside, Waterhead and Bowness.

Visit the famous former home and museum of poet William Wordsworth.

Lake Windermere Cruise

Optional visit to the 'World of Beatrix Potter' in Bowness (entrance not included)

Photo: Manchester Sightseeing Tours

Address: Manchester Piccadilly Station, Manchester, Greater Manchester, M60 7RA

Internet: <https://www.visitmanchester.com/things-to-see-and-do/lake-district-cruise-poetry-and-grasmere-gingerbread-day-trip-from-manchester-p350531>

Historic Chester with River Cruise, Open Top Bus and Walking Tour Day Trip from Manchester



Chester is one of the UK's most popular city destinations with cobbled streets, hidden cellars and quirky lanes to discover. What is

included in your day trip to Chester from Manchester:

Meet and Greet Service at Manchester Piccadilly Railway Station

Return Train from Manchester to Chester

Sightseeing Bus

Catch the hop-on-hop-off sightseeing bus from Chester railway station to the river.

River Cruise

Join Chesterboat at the Groves for your 30 minute cruise on the River Dee. After your cruise, rejoin the sightseeing bus and head to the town centre. Why not visit the beautiful cathedral founded as a Benedictine monastery more than 800 years ago? Entry is free and they have a lovely refectory where you can get lunch.

90 minute walking tour

Meet your blue badge guide at the Visitor Information Centre at 1.50pm. You will discover the history and local legends on your tour, including the famous Roman walls and the medieval "Rows" which are 700-year-old, two-tiered covered shopping galleries, offering an extensive choice of independent shops. You will also see the Eastgate Clock and the beautiful riverside Groves.

Photo: Manchester Sightseeing Tours

Address: Manchester Piccadilly Station, Manchester, Greater Manchester, M60 7RA

Internet: <https://www.visitmanchester.com/things-to-see-and-do/historic-chester-with-river-cruise-open-top-bus-and-walking-tour-day-trip-from-manchester-p369251>

Chatsworth House and Gardens, National Park and Bakewell Pudding Day Trip from Manchester



Chatsworth, the magnificent home of the Duke and Duchess of Devonshire, is set in the heart of the beautiful Peak District National

Park. There are 30 spectacular rooms to explore in the main house, and a 105-acre garden famous for its water features, sculptures and maze.

What's included in your day trip to Chatsworth from Manchester:

Meet and Greet at Manchester Piccadilly Station
Return train travel from Manchester to Sheffield
Bus Transfers to Chatsworth House

Chatsworth House and Gardens

Enjoy a full day at Chatsworth or after your visit, take the bus back to the pretty town of Bakewell.

Bakewell

Famous worldwide for its pudding and tart, this Derbyshire market town is well worth a visit. You can then return to Sheffield on the same bus for your train back to Manchester.

Photo: Manchester Sightseeing Tours

Address: Manchester Piccadilly Station, Manchester, Greater Manchester, M60 7RA

Internet: <https://www.visitmanchester.com/things-to-see-and-do/chatsworth-house-and-gardens-national-park-and-bakewell-pudding-day-trip-from-manchester-p369271>

Cadbury World 'Chocolate Delights' Day Trip



There is so much to see and do at Cadbury World, from learning how your favourite confectionary is made to uncovering the fascinating story of

Cadbury chocolate.

What's included in your day trip to Cadbury World:

Meet and Greet Service at Manchester Piccadilly Railway Station

Return train travel from Manchester to Bournville

A visit to Cadbury World is not a factory tour - Located in the grounds of the original Cadbury factory, here you discover the history, the making process and the magic of Cadbury confectionary.

Watch the Chocolate making

Audio guides (a small charge may apply) - Available in English, French, German, Chinese, Spanish and British Sign language.

Cadbury Cafe

Photo: Manchester Sightseeing Tours
Address: Manchester Piccadilly Station, Manchester, Greater Manchester, M60 7RA

Medieval York, the Cathedral and Vikings Day Trip



The historic, walled city of York is known for its tangle of quaint cobble streets. There is also a wealth of shops, cafes and restaurants or take a

walk along the ancient city walls.

What's included in your day trip to York:

Meet and Greet Service at Manchester Piccadilly Railway Station

Return train travel from Manchester to York

Jorvik Viking Centre

The World famous York Minster

York Sightseeing Pass - worth £75!

Please note: York sightseeing bus and the river cruise do not operate from December to January/February.

Photo: Manchester Sightseeing Tours
Address: Manchester Piccadilly Station, Manchester, Greater Manchester, M60 7RA
Internet: <https://www.visitmanchester.com/things-to-see-and-do/medieval-york-the-cathedral-and-vikings-day-trip-p350511>

Cheshire Oaks Designer Outlet Day Trip



With a quarter-million square foot of retail space, comprising more than 145 boutiques, restaurants and cafés, Cheshire Oaks isn't

merely the UK's largest Designer Outlet. They have a wide range of brands, offering something to suit every taste. Highlights range from athletic labels, like Nike and Adidas, and high-street favourites, like Marks & Spencer and Next, to a selection of iconic fashion brands, including Burberry, Polo, Michael Kors and Hugo Boss.

What's included in your day trip to Cheshire Oaks:

Daily direct coach travel from Manchester
VIP 'Fashion Passport' Discount

Blue Planet Aquarium discount voucher

Photo: Manchester Sightseeing Tours

Address: Manchester Central Coach Station, Manchester, Greater Manchester, M1 3JF

Internet: <https://www.visitmanchester.com/things-to-see-and-do/cheshire-oaks-designer-outlet-day-trip-p369321>

World of Wedgwood Day Trip with Luxury Afternoon Tea



Discover over 250 years of ground-breaking design and production at 'The World of Wedgwood', a remarkable visitor attraction located

in the 'Potteries', the UK's centre of ceramic production dating from the 17th century.

Wedgwood china is known internationally for its quality, beauty and craftsmanship. Sit down to a Luxury Afternoon Tea, take the factory tour, visit the world-famous Wedgwood Museum, 'throw' your own pot or design a plate, and discover the remarkable story of Josiah Wedgwood and the Wedgwood Brand.

What's included in your day trip to Wedgwood:
Meet and Greet Service at Manchester Piccadilly Station

Return train between Manchester and

Stoke-on-Trent

Return car transfers to the World of Wedgwood

World of Wedgwood Museum and Factory Tour

Throw a Pot 'or' Design a Plate in the Wedgwood Factory

Luxury English Afternoon Tea in the Wedgwood Tea Room

Shop for gifts in the Wedgwood Stores
10% off in the Wedgwood Flagship Store and Brand Junction store.

Photo: Manchester Sightseeing Tours

Address: Manchester Piccadilly Station, Manchester, Greater Manchester, M60 7RA

Internet: <https://www.visitmanchester.com/things-to-see-and-do/world-of-wedgwood-day-trip-with-luxury-afternoon-tea-p350571>

2 Night Luxury Yorkshire Highlights Tour



3 days exploring the Best of Yorkshire! Tour includes executive transport, transfers to and from Manchester, 2 Nights Bed and breakfast in a characterful hotel and 3 course dinners.

The tours will be accompanied by an entertaining, expert Blue Badge Tour Guide who will be able to bring Yorkshire to life and show you the hidden gems of England's largest county.

The Tour will allow you to see historic York and Castle Howard, one of Britain's finest stately homes, as well as experience two of Yorkshire's famous National Parks - The Yorkshire Dales and the North York Moors National Park.

Our tours will allow you to experience the best of Yorkshire with an exclusive personal tour including top Yorkshire hospitality!

Photo: Manchester Sightseeing Tours

Address: Various pick-ups across Manchester

Internet: <https://www.visitmanchester.com/things-to-see-and-do/2-night-luxury-yorkshire-highlights-tour-p377231>

Blackpool Seaside Resort Day Trip



Includes 7 different fantastic attractions! When you think of Blackpool Seaside, you might think neon lights, entertainment, sticks of

rock and a golden mile of beaches perfect for sand castles and donkey rides. However, as you're strolling down Blackpool Promenade, you're also soaking up centuries of British seaside culture!

What's included in your day trip to Blackpool:
Meet and Greet Service at Manchester Piccadilly Station
Return train from Manchester to Blackpool.

Blackpool Bus and Tram Day Ticket

Blackpool Big Ticket:

The Blackpool Tower Eye with 4D Cinema
The Blackpool Tower Dungeon
The Blackpool Tower Circus (subject to availability)
The Blackpool Tower Ballroom
Jungle Jim's Indoor Play
SEA LIFE Blackpool
Madame Tussauds Blackpool

Photo: Manchester Sightseeing Tours
Address: Manchester Piccadilly Station, Manchester, Greater Manchester, M60 7RA
Internet: <https://www.visitmanchester.com/things-to-see-and-do/blackpool-seaside-resort-day-trip-p369241>

Lake District Cruise, Steam Train and Peter Rabbit Day Trip



The Lake District National Park is famous for its spectacular scenery of lakes and mountains, and its connections with the poet

William Wordsworth and the author Beatrix Potter. This tour brings together some of the very best the National Park has to offer, giving you a truly memorable 'Lakeland' experience.

What's included in your day trip to the Lake District:
Meet and Greet at Manchester Piccadilly Train Station
Return train travel from Manchester to Windermere

Sightseeing Bus

Yellow Cruise on Lake Windermere

Return Trip on Lakeside Haverthwaite Steam Railway

The World of Beatrix Potter

Photo: Manchester Sightseeing Tours
Address: Manchester Piccadilly Station, Manchester, Greater Manchester, M60 7RA
Internet: <https://www.visitmanchester.com/things-to-see-and-do/lake-district-cruise-steam-train-and-peter-rabbit-day-trip-p369261>

Chester Zoo Day trip



Chester Zoo is one of the UK's leading zoos. With 20,000 wild and wonderful animals including 500 exotic and endangered species there

is so much to see and do in the 125 hectares of grounds and gardens, a fantastic day out for all ages.

Discover the many exhibits, attractions and immersive habitats at Chester Zoo. The animal exhibits include the Realm of the Red Ape, Spirit of the Jaguar, South East Asian Islands, the impressive Asian elephant house, Aquarium and Fruit Bat Forest. There is a great collection of Reptiles who have literally been around for an age - over 340 million years! Check out the Amphibians, a weird and wonderful collection of animals that includes three main groups; frogs & toads, salamanders and caecilians.

Conservation is right at the heart of everything they do at Chester Zoo. Many of the species at the zoo, like Asian Elephants and Black Rhinos, are in danger of becoming extinct in the wild in the next 25 years. Learn how the work that the zookeepers do within the zoo and around the world is helping to protect their future. Come and find out more with a day trip to Chester Zoo.

Photo: Chester Zoo

Address: Manchester Central Coach Station, Chorlton St, Manchester, Greater Manchester, M1 3JF

Bronte Country Tour



Explore Haworth and the life and times of the Bronte sisters! Travel to the bohemian town of Hebden Bridge in the Calder Valley situated

next to the Rochdale Canal before visiting the hilltop village of Heptonstall with its gothic church ruins, octagonal Wesleyan Chapel and old C16th Cloth Hall.

We will then climb over the Moors via Oxenhope to Haworth. We will visit St Michaels Church with its Bronte crypt, walk down the famous cobbled high street and visit the Bronte Parsonage Museum bringing to life the story of this famous family who have become such an important part of British literary history.

From Haworth we'll drive up onto the Moors to visit Ponden Hall before driving to Halifax to visit the wonderful newly renovated Grade I listed Piece Hall before returning to Manchester.

Manchester early start pick-up in an executive vehicle from booker's hotel.

Photo: Manchester Sightseeing Tours

Address: Various across Manchester

Internet: <https://www.visitmanchester.com/things-to-see-and-do/bronte-country-tour-p377201>

2 Nights Yorkshire TV & Film Location Tour



Tour includes executive transport, transfers to and from Manchester, 2 Nights Bed and breakfast in a characterful hotel and 3 course dinners. The

tours will be accompanied by an entertaining, expert Blue Badge Tour Guide who will be able

to bring Yorkshire to life and show you the hidden gems of England's largest county.

The Tour will allow you to see locations from TV series such as James Herriot and All Creatures Great & Small, Happy Valley and Last Tango in Halifax, Emmerdale, Heartbeat & DCI Banks. As well as films such as Harry Potter, Calendar Girls, Robin Hood Prince of Thieves and many more.

Day 1 - Calderdale - Bronte Country

Travel via Calderdale and Haworth to explore Bronte Country and the scenes of some of Sally Wainwrights drama's such as To Walk Invisible, Happy Valley and Last Tango in Halifax.

Overnight and dinner in Leeds

Day 2 - North York Moors - Heartbeat, Harry Potter & Dracula

Travel from Leeds via Harrogate then over to Castle Howard - location for Brideshead Revisited, and more recently ITV drama Victoria. From here we will travel up into the North York Moors & Goathland - its station featuring as Hogsmead in the Harry Potter films and still attracting visitors with its 50's theming left over from TV series Heartbeat.

We'll visit Whitby - the inspiration for Dracula and travel back via Blakey Ridge which featured in American Werewolf in London.

Overnight & Dinner Leeds

Day 3 - Yorkshire Dales - Calendar Girls Country & Herriot Country

Head out to the Yorkshire Dales via Ilkley to see the famous Cow & Calf Rocks. We will then travel via Malham Cove (featured in Harry Potter & the Deathly Hallows) travelling via Ribbleshead Viaduct (location for ITV's Jericho) before visiting Hawes which featured in All Creatures Great & Small.

We will then travel back to Manchester

Photo: Manchester Sightseeing Tour

Address: Pick up from hotel, Manchester

Internet: <https://www.visitmanchester.com/things-to-see-and-do/2-nights-yorkshire-tv-and-film-location-tour-p377241>

Yorkshire Sculpture Park & The Hepworth Museum



Visit the UK's leading open air gallery and Wakefield's famous Hepworth Sculpture Gallery! The day will start at The Yorkshire

Sculpture Park, exploring the grounds and seeing artworks set in beautiful landscapes. As well as open air displays, there are many other galleries showcasing modern and contemporary art. Situated in a 500 acre site within the 18th century Bretton Hall Estate - it was the first sculpture park in the UK and the largest of its type in Europe.

You are able to see Barbara Hepworth's Family of Man in its entirety, along with significant collections of sculpture including bronzes by Henry Moore and site-specific works by Andy Goldsmith, David Nash, James Turrell and Anthony Gormley.

After lunch, we'll travel to Wakefield to visit the wonderful Hepworth Gallery which showcases much of Barbara Hepworth's work as well as

other contemporary artists. Not only are the Gallery contents stunning but the architecture of the building is worth seeing in its own right.

We will leave Wakefield mid-afternoon to return to Manchester.

Photo: Manchester Sightseeing Tour

Address: Various across Manchester

Internet: <https://www.visitmanchester.com/things-to-see-and-do/yorkshire-sculpture-park-and-the-hepworth-museum-p377211>

Yorkshire Dales Highlights Tour



The best of the Yorkshire Dales in a day! Travel over to the Yorkshire Dales and see the magnificent limestone amphitheatre which is

Malham Cove which featured in Harry Potter & the Deathly Hallows. We'll stop at Town End Farm shop (location for the recent TV series Top of the Shops with Tom Kerridge) for coffee and the chance to buy some local goodies, before traveling to the Dales village of Ingletton.

From here we will travel into the heart of the Dales to Hawes passing the iconic Ribbleshead Viaduct, traveling through limestone country and seeing wonderful countryside with hundreds of miles of dry stone walls and sheep.

There will be time to sample some cheese in Wensleydale before traveling over Fleet Moss and the high Moors from Wensleydale to drop into Upper Wharfedale experiencing the best of Herriot Country.

We'll stop for lunch at a traditional pub and then stop in the picture postcard villages of Kettlewell - which featured as the fictional village of

Knapley in the Calendar Girls movie, Kilnsey with its trout farm and limestone cliff and the beautiful Burnsall on the banks of the Wharfe, before travelling back to Manchester via the old Spa Town of Ilkley.

Manchester early start pick-up in an executive vehicle from booker's hotel.

Photo: Manchester Sightseeing Tours

Address: Various across Manchester

Internet: <https://www.visitmanchester.com/things-to-see-and-do/yorkshire-dales-highlights-tour-p377131>

2 Night - The Best of Yorkshire Food & Drink - "Foodie Tour"



Tour includes executive transport, transfers to and from Manchester, 2 Nights Bed and breakfast in a characterful hotel and Dinner at two of

Yorkshire's Michelin Starred Restaurants (Drinks not included) .

Day 1 - Collect from Manchester

Explore the North York Moors visiting a local cider maker, cheese maker, micro-brewery and the wonderful market town of Helmsley before having a picnic of local produce, whilst experiencing the majestic views of Farndale. We will then head to the Michelin starred Star at Harome for dinner, where you will meet the chef, see the kitchen and even be able to plate your own food!

Overnight in York

Day 2

Another full day, we will travel into the Yorkshire

Wolds to visit Yorkshire Rapeseed oils, a local distillery and famous old smokehouse. Dinner will be at the Michelin starred Pipe & Glass before returning to York

Overnight in York

Day 3 - Transfer back to Manchester

Photo: Manchester Sightseeing Tours

Address: Various pick up sites across Manchester

Internet: <https://www.visitmanchester.com/things-to-see-and-do/2-night-the-best-of-yorkshire-food-and-drink-foodie-tour-p377251>

Historic York



Visit historic city of York and visit the iconic York Minster We will take a walking tour of the city including a short walk along the city walls. Over

the course of the day you will see Museum gardens with it's Roman Multangular tower and the ruins of St Mary's Abbey. We'll also visit the famous medieval street The Shambles, supposedly inspiration for Diagon Alley in the Harry Potter films.

We will also see Norman Castles, grand Georgian buildings, gothic churches with huge lantern towers and medieval timber framed buildings. York's colourful past will be brought to life with an entertaining Blue Badge Guide who as well as York's highlights will be able to show you many of its hidden gems too!

There will be time for a traditional pub lunch before we take a guided tour of York Minster, the largest Gothic church in the whole of Northern Europe.

There will be some free time to visit the wonderful, independent shops before heading back over the Manchester.

Photo: Manchester Sightseeing Tours

Address: Various pick up sites across Manchester

Internet: <https://www.visitmanchester.com/things-to-see-and-do/historic-york-p377221>

Mountain Goat Lake District Tour from Manchester



This tour gives you a day in the Lake District National Park, from Manchester. Its an ideal way to see the villages, market towns and

scenery associated with England's largest National Park.

You will start the Lake District tour by making your way from Bowness Bay towards Waterhead, cruising on England's largest Lake, Windermere. Sit back and enjoy the unrivalled views from the Lake towards the fell ranges beyond.

After arriving at Waterhead you make your way to Beatrix Potter's Hill Top Farm, where she wrote many of her famous children's stories in this 17th century cottage. You will have the opportunity to explore the gardens and visit the shop. You can choose to visit the house (extra admission charge).

Continuing onto the medieval village of Hawkshead, you will have a little time to explore its many delightful features.

Onwards to the renowned beauty spot of Tarn Hows - one of the most photographed locations in the Lake District.

As your Lake District tour comes to an end, we will then continue our journey back to Manchester.

Photo: Manchester Sightseeing Tours

Address: Pick up from Manchester

Internet: <https://www.visitmanchester.com/things-to-see-and-do/mountain-goat-lake-district-tour-from-manchester-p37140>
1

Busy Bus North Wales Adventure Tour



This is our award-winning Full-Day / 190-mile North Wales Adventure tour for departures from Manchester. Your tour is fully escorted and

narrated with a jolly driver and knowledgeable escort who, invariably, will become more of a friend than a tour guide!

ITINERARY

We will leave the modern city of Manchester and will head west en-route to the mysterious and legendary land of Wales in a 90-minute fully-narrated journey.

Arriving at Llandudno we'll ascent the steep Great Orme and marvel at the views (on a clear day we'll even see the Isle Of Man!) and visit the 1,100 year old hidden chapel of St. Tudno with its Blue Window and Stigmata.

Next is the walled town of Conwy, constructed by the English monarch Edward I between 1283 and 1289.

Conwy Castle is a gritty, dark-stoned fortress built by James of St. George in partnership with the french Richard The Engineer.

Now, brace yourselves for what BusyBus has become known for (and, we modestly add, have won National awards for) the North Wales Adventure element of the tour. In to Snowdonia National Park using carefully selected routes and taking you well and truly off the beaten track to viewpoints of wonder! You'll feel like you own Snowdonia in the tranquility and ambiance (and adventure) we've prepared!

No trip to North Wales would be complete without a stop at the "capital", Betws-Y-Coed (prayer-house in the woods).

Photo: Manchester Sightseeing Tours

Address: The Station, Manchester Airport, Malaga Avenue, Ringway, Greater Manchester, M90 3RR

Internet: <https://www.visitmanchester.com/things-to-see-and-do/busy-bus-north-wales-adventure-tour-p377271>

TOURIST INFORMATION

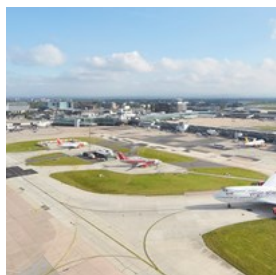


M.V. Photography / Shutterstock.com

Whatever brings you to Manchester, Visit Manchester is here to make sure that you get the most out of your trip.

When you're in the city, make sure to drop by our Visitor Information Centre. Here you can get tourist information on how to best shape your visit, as well as maps, merchandise and discounted tickets to some of the most popular attractions and tourist spots.

Airport



With three terminals handling over 23 million passengers each year, Manchester Airport is the UK's Global Gateway for the North. Sixty-five airlines ensure Manchester Airport is directly connected to over 210 destinations including Beijing and Hong Kong, and no more than one-stop away from anywhere in the world.

It has a combined railway and bus station, with departures to Manchester and the rest of the country. The train to Manchester Piccadilly takes about 20 minutes. Airport buses to Manchester depart every half hour. Taxis and car hire companies are also available at the airport.

Photo: Hufton and Crow

Phone: +44 800 042 0213

Internet: <https://www.visitmanchester.com/visitor-information/travel-information>

Virgin Trains



Virgin Trains will get travellers to Manchester in the quickest, most comfortable and most stylish way possible. With trains every 20 minutes and fares from £20 it couldn't be easier.

Whether its some awesome shopping, or making a weekend out of Manchester, enjoy the hustle and bustle of the Manchester Arndale or a visit to the Trafford Centre. Explore somewhere new this season with Virgin Trains.

Photo: Marketing Manchester

Address: Piccadilly Station, Manchester, Greater Manchester, M60 7RA

Internet: <https://www.visitmanchester.com/visitor-information/travel-information/virgin-trains-p328291>

Sixt Rent a Car



Airport When you hire a car at our Manchester Airport branch you can enjoy free cancellation and free unlimited mileage with no booking fees. Your hire car will include a full tank of petrol which should be returned full and can be refilled on-site. Sixt offers some of the highest quality car rentals in Manchester Airport. Piccadilly

The Sixt Piccadilly branch is located on Ducie Street just a short walk away from Piccadilly train station. The branch is open 7 days a week, including bank holidays. We offer a range of vehicle types from this branch, including luxury cars, economy cars, convertibles, sports cars & vans.

Optional extras, such as satellite navigation, child seat or baby seat are also available. We offer brands including Vauxhall, VW, Chevrolet, Mercedes-Benz and Audi.

Trafford Park

Our Trafford Park branch is situated on Chester Road in walking distance of Old Trafford football stadium, home of Manchester United and Lancashire Emirates cricket which was used for the 2013 summer Ashes series. Sixt Trafford Park has excellent transportation links, with buses from the city centre stopping outside the branch and a Metrolink tram stop just a five minute walk. If you are travelling to us by road, Chester Road connects the M60 with Manchester

city centre.

For all your shopping needs, Manchester city centre has a varied range of shops from well known brands on Market Street and in the Arndale shopping centre to vintage shopping boutiques in the Bohemian Northern Quarter. For convenient shopping, the Trafford centre, home to over 200 shops and restaurants is a ten minute drive away.

Photo: Sixt

Address: Pasture Field Road, Manchester M22 5JW

Phone: +441246 220111

Internet:

<http://www.sixt.co.uk/car-hire/united-kingdom/manchester/>

City Spare Space



Need luggage storage in Manchester? Whether you need a few hours or a few days, City Spare Space makes it easy to book affordable luggage

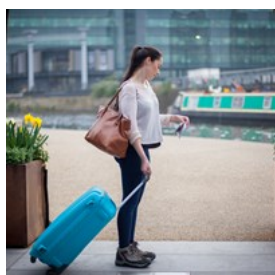
storage in local businesses in Manchester. £6 per bag all day luggage storage and £10 overnight luggage storage.

Photo: City Spare Space

Address: Manchester

Internet: <https://www.visitmanchester.com/information/product-catch-all/city-spare-space-p383191>

Stasher



Stasher have locations across Manchester where you can store your bag for only £6 for 24 hours including insurance.

Enjoy the most of your day without having to lug your bags around with you! Book your bag safely into one of their StashPoints.

Their locations are trusted hotels and shops who safely store your bags. The service is fully insured by them - up to £750 per bag.

They are 50% cheaper than station lockers and have locations conveniently placed across the city.

You must book online - hosts cannot accept payment in store.

Photo: Stasher

Address: Manchester

Phone: +44 (0)203 355 3544

Internet: <https://www.visitmanchester.com/information/product-catch-all/stasher-p340751>

Public Transport



Thanks to an integrated transport network Manchester is one of the most accessible cities in the UK for both national and international visitors.

As England's Gateway to the North, travel around Northern England is easy too, and Manchester Airport is easily accessible from Manchester city centre.

Getting around the city and surrounding areas is easy once you're here thanks to the fleet of buses, trams and trains available. The compact nature of the city centre also makes walking a popular choice. If you're driving into the city, there are a number of car parks available, or if you're wanting to explore the wider region, car hire is a popular choice for travellers. And for those on a flying visit, there are a number of secure places to leave your luggage.

Photo: Marketing Manchester

Phone: +44 871 200 22 33

Internet: <https://www.visitmanchester.com/visitor-information/travel-information>

Taxi



Manchester's largest fleet of iconic black cabs with 300 professional, uniformed drivers and over 50 years' experience. You can be

confident that Mantax will get you from A to B as quickly as possible. Mantax pride themselves on customer service, high standards and safety; all of their journeys are GPS tracked and can even be booked and tracked live on their iPhone or Android App and Web Booker. All of their taxis accept credit and debit card payments (including Amex), are wheelchair accessible and seat 5 or 6 with plenty of room for luggage.

Their rates are set and regulated by Manchester City Council and they now offer 10% student discount with a valid NUS card. Mantax offer black cab quality at private hire rates so call for your personal quote today.

Ways to book:

- Call their dedicated booking team: 0161 230 3333
- Download their free iPhone or Android App
- Book online at their Web Booker

Mantax specialise in corporate & personal accounts and can offer a bespoke service for all your travel needs.

Photo: ArrivalGuides

Address: 1-3 West Street, Manchester M11 4EF

Phone: +44 161 230 3333

Internet: <https://www.visitmanchester.com/visitor-information/travel-information/mantax-p270811>

Post



Manchester Post Office:

Photo: Andy Fuchs

Address: 26 Spring Gardens, Manchester

Opening hours: Mon, Wed-Fri 9am-6pm, Tue 9:30am-6pm,

Sat 9am-5:30pm

Phone: +44 345 611 2970

Internet: www.postoffice.co.uk

Pharmacy

Cameolord Pharmacy:



Photo: Gemma Garner

Address: 7 Oxford St, Manchester

Opening hours: Daily 8am-12am

Phone: +44 161 236 1445

Internet: www.nhs.uk/Services/Pharmacies/Overview/DefaultView.aspx?id=7858

Telephone



Country code: +44 Area code: 0161

Photo: Jardson Almeida

Electricity

240 V, 50 Hz



Photo: Stirling Tschan

Population

2.8 million

Currency

British Pound, £1 = 100 pence

Opening hours

Shops are usually open Mon-Fri 10am-8pm, Sat 9am-7pm,
Sun 11am-5pm.

Internet

<https://www.visitmanchester.com>

Newspapers

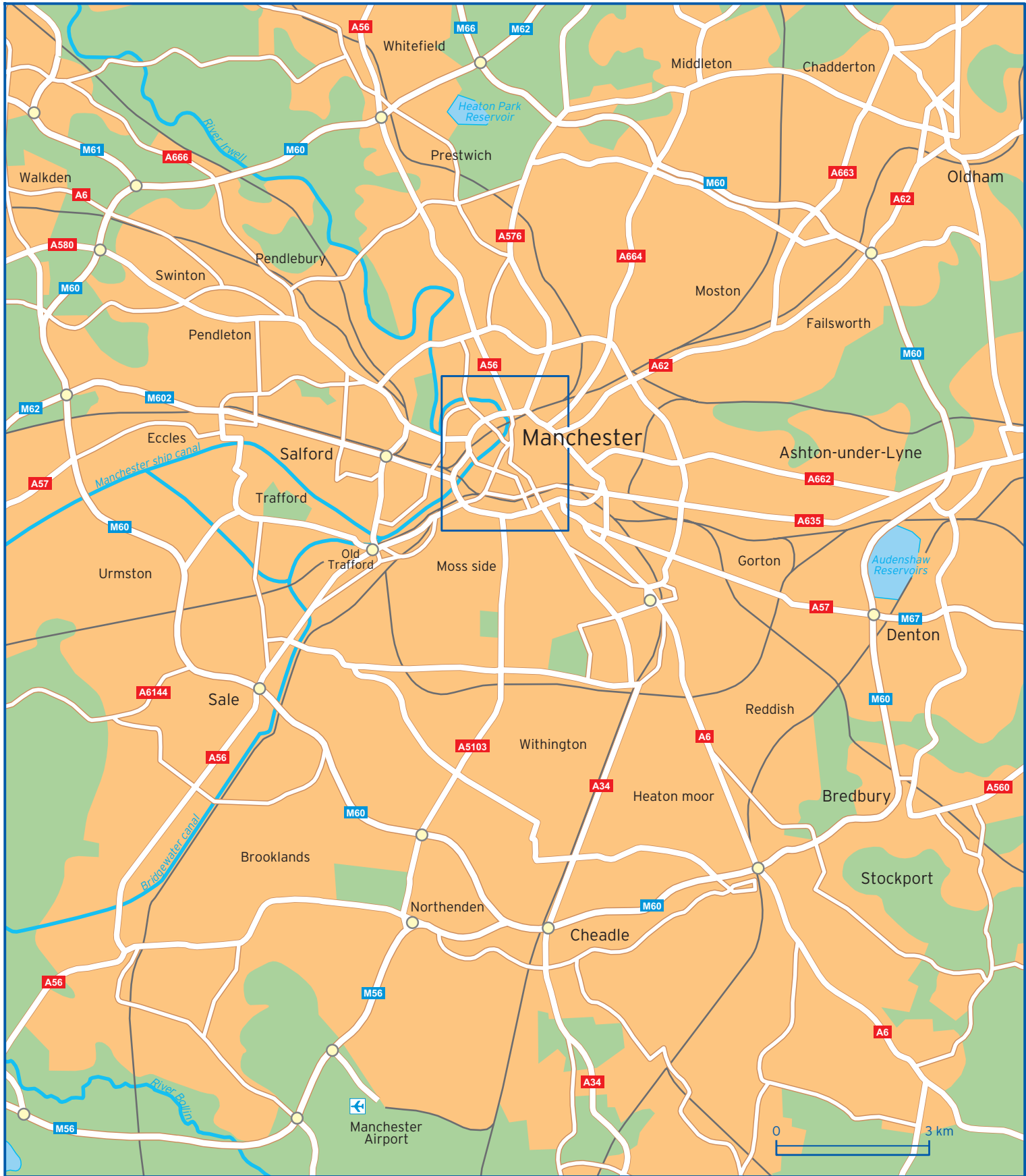
The Guardian
Manchester Evening News
Manchester Metro News (free)

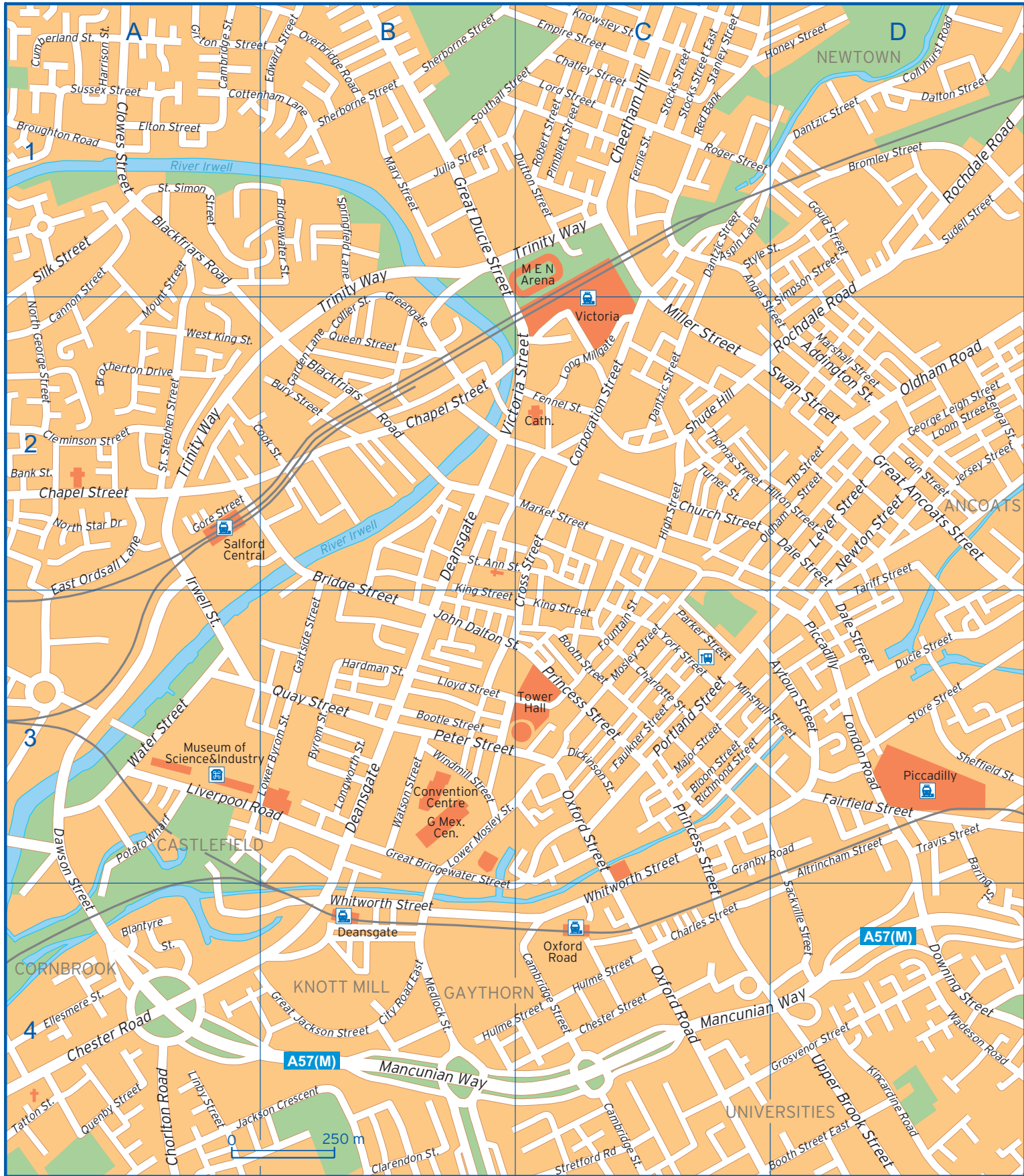
Emergency numbers

112
999

Tourist information

Visit Manchester
Manchester Visitor Information Center, Manchester
+44 871 222 8223
Mon-Sat 9:30am-5pm, Sun 10:30am-4:30pm





Addington Street	D2	Downing Street	D4	Lord Street	C1
Altrincham Street	D3	Ducie Street	D3	Lower Byrom Street	B3
Angel Street	C1 D2	Dutton Street	B1 C1	Lower Mosley Street	B3
Aspin Lane	C1	East Ordsall Lane	A2 A3	Major Street	C3
Aytoun Street	C3 D3	Edward Street	B1	Mancunian Way	B4 C4 D4
Bank Street	A2	Ellesmere Street	A4	Market Street	C2
Baring Street	D3 D4	Elton Street	A1	Marshall Street	D2
Bengal Street	D2	Empire Street	C1	Mary Street	B1
Blackfriars Road	A1 B2	Fairfield Street	D3	Medlock Street	B4
Blantyre Street	A4	Faulkner Street	C3	Miller Street	C2
Bloom Street	C3	Fennel Street	C2	Minshull Street	C3 D3
Booth Street	C3	Fernie Street	C1	Mosley Street	C3
Booth Street East	D4	Fountain Street	C3	Mount Street	A1 A2
Bootle Street	B3	Garden Lane	B2	Newton Street	D2
Bridge Street	B2 B3	Gartside Street	B3	North George Street	A2
Bridgewater Street	B1	George Leigh Street	D2	North Star Drive	A2
Bromley Street	D1	Girton Street	A1 B1	Oldham Road	D2
Brotherton Drive	A2	Gore Street	A2	Oldham Street	C2 D2
Broughton Road	A1	Gould Street	D1	Overbridge Road	B1
Bury Street	B2	Granby Road	C3 D3	Oxford Road	C4
Byrom Street	B3	Great Ancoats Street	D2	Oxford Street	C3
Cambridge Street	A1 C4	Great Bridgewater Street	B3 B4	Parker Street	C3
Cannon Street	A1 A2	Great Ducie Street	B1 B2	Peter Street	B3
Chapel Street	A2 B2	Great Jackson Street	B4	Piccadilly	D3
Charles Street	C4	Greengate	B2	Pimblett Street	C1
Charlotte Street	C3	Grosvenor Street	D4	Portland Street	C3
Chatley Street	C1	Gun Street	D2	Potato Wharf	A3
Cheetham Hill	C1	Hardman Street	B3	Princess Street	C3 C4
Chester Road	A4	Harrison Street	A1	Quay Street	B3
Chester Street	C4	High Street	C2	Queen Street	B2
Chorlton Road	A4	Hilton Street	C2 D2	Quenby Street	A4
Church Street	C2	Honey Street	C1 D1	Red Bank	C1
City Road East	B4	Hulme Street	B4 C4	Richmond Street	C3
Clarendon Street	B4	Irwell Street	A2 A3	Robert Street	C1
Cleminson Street	A2	Jackson Crescent	A4 B4	Rochdale Road	D1 D2
Clowes Street	A1	Jersey Street	D2	Roger Street	C1
Collier Street	B2	John Dalton Street	B3 C3	Sackville Street	D3 D4
Collyhurst Road	D1	Julia Street	B1	Sheffield Street	D3
Cook Street	A2 B2	Kincardine Road	D4	Sherborne Street	B1
Corporation Street	C2	King Street	B3 C3	Shude Hill	C2
Cottenham Lane	A1 B1	Knowsley Street	C1	Silk Street	A1
Cross Street	C2 C3	Lever Street	D2	Simpson Street	D1 D2
Cumberland Street	A1	Linby Street	A4	Southall Street	B1 C1
Dale Street	D2 D3	Liverpool Road	A3 B3	Springfield Lane	B1
Dalton Street	D1	Lloyd Street	B3	St. Ann Street	B2 C2
Dantzig Street	C1 C2 D1	London Road	D3	St. Simon Street	A1
Dawson Street	A3 A4	Long Millgate	C2	St. Stephen Street	A2
Deansgate	B2 B3	Longworth Street	B3	Stanley Street	C1
Dickinson Street	C3	Loom Street	D2	Stocks Street	C1

Stocks Street East	C1	Tatton Street	A4	Wadson Road	D4
Store Street	D3	Thomas Street	C2	Water Street	A3
Stretford Road	C4	Tib Street	D2	Watson Street	B3
Style Street	C1 D1	Travis Street	D3	West King Street	A2
Sudell Street	D1	Trinity Way	A2 B1 B2 C1	Whitworth Street	B4 C3 C4
Sussex Street	A1	Turner Street	C2	Windmill Street	B3
Swan Street	C2 D2	Upper Brook Street	D4	York Street	C3
Tariff Street	D2 D3	Victoria Street	B2 C2		