



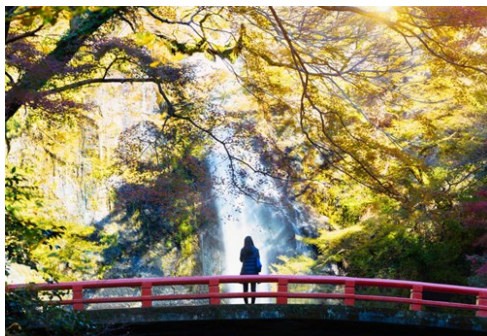
Photo: Daniel Valenzuela/ArrivalGuides



Josemaria Toscano / Shutterstock.com



cowardlion / Shutterstock.com



Patrick Foto / Shutterstock.com

Sitting in the heart of the Kansai region, Osaka is its third largest city of Japan. It could be the closeness to Korea, China and the coast that has made it to become known as the “Kitchen of Japan”. Osaka’s people have a true zest for life. They promote a casual air and ease and are slightly, unconventionally boisterous. Osaka is regenerating, now recognising its past beauty and working hard to re-establish it. This stimulating city that works to live, is now more than ever a must-see.

# QUIZ

*What Type of Traveller  
Are You Based on  
Your Travel IQ?*

**TAKE THE QUIZ**

### Top 5



#### The National Museum of Art

This museum is not only impressive for its modern outside design, but offers...



#### Osaka Castle

Osaka Castle is the city's most famous landmark. It was originally built in ...



#### Osaka Museum of History

The Osaka Museum of History lies just outside Osaka Castle Park. It aims to ...



#### Shin-umeda City Floating G...

Shin Umeda City was completed in 1993 and has become one of Osaka's main poi...



#### Osaka Aquarium Kaiyukan

Osaka Aquarium Kaiyukan is one of the biggest aquariums in the world, and ha...



## THE CITY



*littlewormy / Shutterstock.com*

Osaka is predominantly divided into wards. Kita, located in the north is primarily the business and commercial area, and Minami, in the south, is principally the shopping and entertainment hub of the city.

Architecturally this is a futuristic city, dynamic in spirit. However, more recently, it has been looking to its past - now restoring beautiful parks and public areas.

Osaka devours life, but in a leisurely way. Its people are often called “kuidaore,” meaning that they become poor because of their extravagance in eating and drinking. Shopping and eating are certainly preferred activities here.

## DO & SEE



*noina / Shutterstock.com*

Shinsaibashi is the popular shopping area, Soemoncho is the entertainment neighbourhood and Dotombori is packed with theatres and restaurants. Here, you will come across the Shin-Kabukiza Theatre and the famous National Bunraku Puppet Theatre. Further south is the Shinsekai ward, where you cannot miss the 103-metre Tsutenkaku Tower, a recognised landmark of Osaka.

### The National Museum of Art



This museum is not only impressive for its modern outside design, but offers visitors far more interesting things on the inside. It exhibits Japanese as well as contemporary art from various artists from all over the world. Most of the exhibits are from the post-war era.

Photo: Mc681 (image cropped)

Address: 4-2-55 Nakanoshima, kita-ku, Osaka

Public Transport: Metro Stop: Higobashi

Opening hours: Tuesday-Thursday, Saturday-Sunday:  
10.00-17.00, Friday: 10.00-19.00

Phone: +81 6 6447 4680

Internet: [www.nmao.go.jp](http://www.nmao.go.jp)

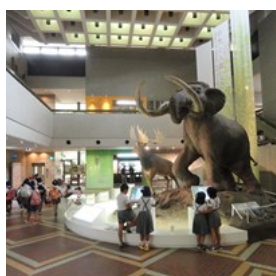
### Osaka Castle



Osaka Castle is the city's most famous landmark. It was originally built in 1583 by the order of Hideyoshi Toyotomi but suffered several destructions throughout history. Rebuilt in 1931 with the external appearance created by Hideyoshi Toyotomi, the Japanese Government designated the main tower as a Registered Tangible Cultural Property years later, in 1997.

Photo: Daniel Valenzuela / ArrivalGuides  
Address: 1-1, Osakajo, Chuo-ku, Osaka  
Phone: +81 6 6941 3044  
Internet: [www.osakacastle.net](http://www.osakacastle.net)

### Osaka Museum of History

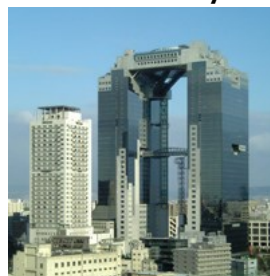


The Osaka Museum of History lies just outside Osaka Castle Park. It aims to bring the city's history to life and features a

multi-dimensional experience of the 1,400-year history of Osaka, with life-size reconstructions, scale models, and key photographs and movies. An entertaining and fun experience for young and old.

Photo: Daderot (image cropped)  
Address: 1-32 Otemae 4-Chome, Chuo-ku, Osaka  
Opening hours: Monday, Wednesday-Thursday: 09.30-17.00, Saturday-Sunday: 09.30-17.00  
Phone: +81 6 6946 5728  
Internet: [www.mus-his.city.osaka.jp](http://www.mus-his.city.osaka.jp)

### Shin-umeda City Floating Garden



Shin Umeda City was completed in 1993 and has become one of Osaka's main points of orientation in the city. You can enjoy a great view over the city at the observatory on the 39th floor.

Photo: Suisui (image cropped)  
Address: 1-1-88, Oyodonaka, Kita-ku, Osaka  
Phone: +81 6 6440 3855  
Internet: [www.skybldg.co.jp](http://www.skybldg.co.jp)

### Osaka Aquarium Kaiyukan



Osaka Aquarium Kaiyukan is one of the biggest aquariums in the world, and has a great variety of fish, and even a few whale sharks. The Japanese word Kaiyukan, literally means "Playing in the Sea Pavilion".

Photo: Kimon Berlin (image cropped)  
Address: 1-1-10 Kaigandori, Osaka  
Phone: +81 6 6576 5501  
Internet: [www.kaiyukan.com](http://www.kaiyukan.com)

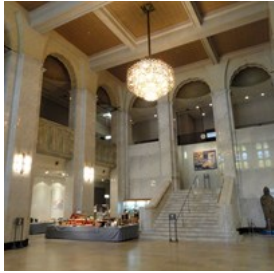
### The National Bunraku



In this theatre you can view the fascinating and unusual art form "bunraku", which is a Japanese puppet drama derived from the 17th-century. There are also English programs available and earphones for translations.

Photo: Mc681 (image cropped)  
Address: 1-12-10, Nippon-bashi, Chuo-ku, Osaka  
Phone: +81 6 6212 2531  
Internet: [www.ntj.jac.go.jp](http://www.ntj.jac.go.jp)

### Osaka Municipal Museum of Art



The Osaka Municipal Museum of Art offers artwork from the country's finest contemporary artists. The museum has sculptures,

paintings and calligraphy from both known established artists and skilled newcomers.

Photo: Daderot (image cropped)

Address: 1-82 Chausuyama-cho, Tennoji-ku, Osaka

Opening hours: Tuesday-Sunday: 09.30-17.00

Phone: +81 6 6771 4874

Internet: [www.osaka-art-museum.jp](http://www.osaka-art-museum.jp)

More Info: Last admission 30 minutes before closing

### Sumiyoshi Taisha Shrine



The Samiyoshi Taisha Shrine is one of Japan's oldest shrines and it is registered as a National Treasure. Many events are staged at this

historical location. Every year on New Year's day, a large crowd gathers at the shrine to celebrate.

Photo: KimonBerlin (image cropped)

Address: 2-9-89 Sumiyoshi, Osaka

Public Transport: Sumiyoshi Taisha

Phone: +81 6 6672 0753

Internet: [www.sumiyoshitaisha.net](http://www.sumiyoshitaisha.net)

### The Museum of Oriental Ceramics



This museum is specialized in ceramics and almost three thousand items from China and Korea are displayed here. The

stylish museum has a world-class collection of oriental ceramics.

Photo: 663highland (image cropped)

Address: 1-1-26, Nakanoshima, Kita-ku, Osaka

Public Transport: Metrostop: Yodoyabashi

Opening hours: Tuesday-Sunday: 9.30 -17.00

Phone: +81 6 6223 0055

Internet: [www.moco.or.jp](http://www.moco.or.jp)

### Shitennoji Temple



Shitennoji Temple is the oldest officially administered temple in Japan. The temple was built by Prince Shotoku and had an important

status in the city's trade history due to its location on the Bay. Throughout history, the temple has been reconstructed several times.

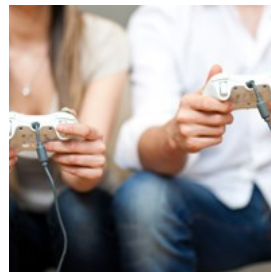
Photo: Daniel Valenzuela / ArrivalGuides

Address: 1-11-18 Shitennoji, Tennoji-ku, Osaka

Phone: +81 6 6771 0066

Internet: [www.shitennoji.or.jp](http://www.shitennoji.or.jp)

### Video Game Bar Space Station



This is a great place to go if you like playing video games while drinking since these two pleasures are combined at the Video Game Bar Space

Station. You can choose from game machines like Xbox, Super Nintendo, Genesis and many more.

Photo: Minerva Studio / Shutterstock.com

Address: 2-13-3 Nishi-shinsaibashi, Chuo-ku, Osaka

Opening hours: Monday-Sunday: 20.00-02.00

Phone: +81 80 4151 6336

### Dotonbori



Dotonbori is one of Osaka's most popular areas. You can find almost everything here; theatres, bars, nightclubs, cafés, restaurants, you name it. All day and night, entertainment guaranteed!

Photo: Daniel Valenzuela / ArrivalGuides

Address: Dotombori, Osaka

### Shinsaibashi



Another popular area is Shinsaibashi. This area features not only some of the best fashion stores in the world but also a great nightlife and local food.

Photo: Daniel Valenzuela / ArrivalGuides

Address: Shinsaibashi, Osaka

### Nanba Grand Kagetsu



If you're looking for some fun, the Nanba Grand neighborhood is your place to go. There is a multitude of entertainment centers, theaters, shops and you are guaranteed a fantastic vibe at this busy place.

Photo: Lombroso (image cropped)

Address: 11-6 Nambasenichimae, Chuo-ku, Osaka

Phone: +81 6 6641 0888

Internet: [www.yoshimoto.co.jp](http://www.yoshimoto.co.jp)

### Universal Studios Japan



The Universal Studios Japan is the Hollywood equivalent theme park with attraction from your favourite movies. This is a great place for a whole day of family fun with numerous restaurants, rides and shows.

Photo: Momopy~commons wiki (image cropped)

Address: 2-1-3 3 Sakurajima, Osaka

Phone: +81 570 200 606

Internet: [www.usj.co.jp](http://www.usj.co.jp)

### Osaka Science Museum



This museum offers fun and education for the whole family. You can easily spend hours wandering through its exhibitions and permanent collections. If you're interested in life, the universe and everything in between you can learn more about our solar system in the planetarium hall or join the science show.

Photo: GFDL (image cropped)

Address: 2.1,4cho-me, Nakanoshima Kita-ku, Osaka

Public Transport: Metro Stop: Higobashi Station

Opening hours: Tuesday-Sunday: 09.30-17.00

Phone: +81 6 6444 5656

Internet: [www.sci-museum.jp/files/pdf/english.pdf](http://www.sci-museum.jp/files/pdf/english.pdf)

More Info: Located on Nakanoshima Island, next to the National Museum of Art Osaka

### Osaka International Peace Center



This museum aims to promote peace and gives information about Osaka in World War II. Historical documents and video installations depict

aerial assaults, attacks on Japan as well as the horrors of the atom bomb. Learn more about Osaka's recent past by visiting these exhibitions.

Photo: Bittercup (image cropped)

Address: 2-1 Osakajo, Chuo Ward, Osaka

Public Transport: Metro Stop: Morinomiya Station

Opening hours: Tuesday-Sunday: 9.30-17.00

Phone: +81 6 6947 7208

Internet: [www.peace-osaka.or.jp](http://www.peace-osaka.or.jp)

More Info: Located south of Osaka Castle Park

### Kema Sakuranomiya Park



In Japan the cherry blossom or Sakura is celebrated for its beauty and symbolizes renewal, life as well as ephemerality. In this park

along the Okawa River you can watch the spectacle of about 5000 cherry trees blooming in early spring. The best time for picnics among the magnificent white and pink trees is late March or early April.

Photo: lasta29 (image cropped)

Address: Kema Sakuranomiya Park, Osaka

Public Transport: Metro Stop: Sakuranomiya Station

More Info: During blooming season trees are illuminated until 21.00

### Tsutenkaku



Originally constructed in 1912 and rebuilt after WWII in 1956, the Tsutenkaku Tower stands 103 meters tall and gives you an outstanding view

of all of Osaka. When on top you can venture to step on the platform with a guide and safety belt and experience some exciting vertigo.

Photo: Mc681 (image cropped)

Address: 1 Chome-18-6 Ebisuhigashi, Naniwa Ward, Osaka

Public Transport: Metro Stop: Shin-Imamiya Station

Opening hours: Monday-Sunday: 9.00-21.00

Phone: +81 6 6641 9555

Internet: [www.tsutenkaku.co.jp](http://www.tsutenkaku.co.jp)

### Momofuku Ando Instant Ramen Museum



Have you ever wondered where this delicious and easy to make Ramen comes from? Then visit this Cup Noodle Museum and learn more about the inventor and the history of the popular dish.

Next to free audio guides the place offers ramen workshops for the whole family.

Photo: chee . hong (image cropped)

Address: 8-25 Masumi-cho, Ikeda-shi, Osaka

Opening hours: Monday, Wednesday-Sunday: 9.30-16.00

Phone: +81 72 752 3484

Internet: [www.instantramen-museum.jp/jp](http://www.instantramen-museum.jp/jp)

### Yamamoto Noh Theater



Experience one of the world's oldest theatrical forms - Noh - at the oldest operational theatre of its kind in Osaka. Opt for the "Kamigata Night"

programme to acquaint yourself with all of Kansai Region's traditional performing arts, such as the famed Kabuki, Bunraku Puppet Theatre, Rakugo, and, of course, Noh. The stylish theatre hosts shows in both English and Japanese (the latter are often accompanied by explanatory materials in English, Chinese and Korean), and offers visitors a unique opportunity to attend workshops conducted by professional artists.

Photo: sritakoset/Shutterstock.com

Address: 1-3-6 Tokuicho, Chuo-ku, Osaka

Phone: +81 6 6943 9454

Internet: [www.noh-theater.com](http://www.noh-theater.com)

### Museum of Housing and Living



The exquisite museum offers visitors an immersive experience into Osaka's Edo (9th floor), Meiji (8th floor) and recent Showa

periods. Life-size recreations of Osaka's ancient streets and scale models are complete with multiple original artifacts dating back to the respective eras. One of the museum's main attractions is the opportunity to try on and be photographed in a traditional kimono against the backdrop of a historic Japanese street.

Photo: miya227/Shutterstock.com

Address: 6-4-20 Tenjimbashi, Kita-ku, Osaka

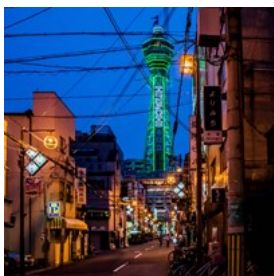
Opening hours: Wed-Mon 10am-5pm (last admission 4.30pm), Tue closed

Phone: +81 6 6242 1170

Internet: [www.konjyakukan.com](http://www.konjyakukan.com)

More Info: 8 Floor

### Shinsekai



Crowned by the looming Tsutenkaku tower, the district of Shinsekai is one of the city's premier entertainment districts, with a slew of dining,

drinking and shopping options. It is also the best place in the city to try kushikatsu, a regional delicacy consisting of skewered and deep-fried meat and vegetables.

Photo: Daniel Valenzuela / ArrivalGuides

### Hozenji Temple



Tucked away behind a busy street, just a few blocks away from Dotonbori canal, lies the tiny and quaint 17th century Buddhist temple,

Hozenji. It is a rare space of peace and tranquility in one of the city's busiest districts, and should not be missed.

Photo: Daniel Valenzuela / ArrivalGuides

Address: Chuo Ward, Nanba, 1-2-16, Osaka

Phone: +81 6 6211 4152

Internet: [www.hozenji.jp](http://www.hozenji.jp)

More Info: .

### DINING



hphoto / Shutterstock.com

Due to its fertile land and close proximity to the sea, Osaka has always produced a copious amount of delicious ingredients. A particularly popular dish in Osaka is "Okonomi-yaki", a Japanese style pancake which contains a combination of meat, seafood and vegetables, all covered in a tasty sauce. Take a seat in an Izakaya, the Japanese version of a pub, and try "Takoyaki" - balls of wheat batter containing octopus.

### La Baie



La Baie offers exceptional seafood and meat dishes with an imaginative, eclectic flavour. They are recipients of a Michelin star, a 5-spoon and fork of the Michelin Guide Kyoto Osaka Kobe 2011. They also serve lunch. For dinner, men are requested to wear a jacket.

Photo: cegoh

Address: Ritz-Carlton, 2-5-25 Kita-ku, Umeda, Osaka

Public Transport: Metro Stop: Osaka Station (Sakurabashi Exit)

Opening hours: Lunch: 11:30-14:30, Dinner: 15:30-21.30

Phone: +81 6 6343 7000

Internet: [www.ritzcarlton.com](http://www.ritzcarlton.com)

More Info: Sophisticated casual attire is suggested

### Los Inkas



Authentic South American dishes, many of which originate from Peru. Try the “ceviche mixto” (shrimp, octopus and fish marinated in lime juice and spices). Prices are reasonable and portions are generous. After dinner, there is no rush to leave. Stay and enjoy some salsa or sip on a cocktail.

Photo: piliperiodista

Address: 2F Kodama Leisure Bldg., 1-14 Doyama-cho, Osaka

Public Transport: Metro Stop: Hankyu Umeda

Phone: +81 6 6365 5190

Internet: [www.r.gnavi.co.jp/inkas](http://www.r.gnavi.co.jp/inkas)

### Gataro



Hidden under the Hankyu railway is this cozy, superior izakaya (Japanese-style pub-restaurant). They serve grilled fish prepared whilst you wait, and it’s highly recommended. Unlike most Izakaya, this one has an English menu.

Photo: Romi

Address: Kappa Yokochonai, Shibata 1-7-2, Osaka

Opening hours: Daily: 16.00-23.00

Phone: +81 6 6373 1484

Internet: [www.t-cb.co.jp/gataro.php](http://www.t-cb.co.jp/gataro.php)

### Matsusakagyu Yakiniku M



Matsusakagyu Yakiniku M is a popular restaurant that offers the traditional Japanese dish, Matsusaka beef, one of the most exclusive and expensive cuts of meat in the world. It may not be cheap, but it is without a doubt worth every penny. The staff is very friendly and all guests have access to free WiFi.

Photo: lalah\_jp

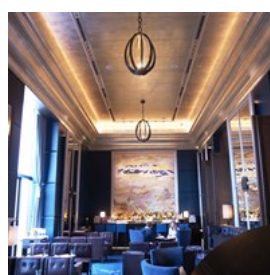
Address: 1-1-19 Namba, Chuo-ku, Osaka

Opening hours: Daily: 17.00-00.00

Phone: +81 6 6211 2917

Internet: [www.matsusaka-projects.com/restaurant/yokochon/](http://www.matsusaka-projects.com/restaurant/yokochon/)

### St. Regis Bar



At the St. Regis Bar you will feel right at home. In a cosy environment you can enjoy a few drinks and something good to eat while listening to live music.



Photo: moore (image cropped)

Address: 3-6-12 Hommachi, Chuo-ku, Osaka

Phone: +81 6 6258 3333

Internet: [www.stregisosaka.co.jp](http://www.stregisosaka.co.jp)

### Ichiran



Ichiran is claimed to be the best ramen restaurant in the city. So if you like noodles, this is the place for you. There are numerous variations to choose from.

Photo: Sun Taro (image cropped)

Address: 7-18 Soemoncho, Chuo-ku, 1F, Osaka

Phone: +81 6 6212 1805

Internet: [www.ichiran.co.jp](http://www.ichiran.co.jp)

Email: [pr@ichiran.co.jp](mailto:pr@ichiran.co.jp)

### Endo Sushi



The sushi at Endo Sushi has been described as one of the best. So if you like fish, rice and vegetables you will probably love this place.

Photo: LollemmyArtPhotography

Address: 1-1-86 Noda Fukushima-Ku, Osaka

Phone: +81 6 6469 7108

Internet: [www.endo-sushi.com](http://www.endo-sushi.com)

### Kobe Misono



This steak house has existed since 1945 and was probably the place where the first teppanyaki steak was served. This is a good restaurant to go if you want to try the famous Kobe beef.

Photo: cegoh

Address: 1-11-19 Sonezakishinchi, Kita-ku, Star Building 3F, Osaka

Phone: +81 6 6341 4471

Internet: [www.misono.org](http://www.misono.org)

### Fukutaro



Fukutaro is claimed to be a must-try in Osaka. This is a good place to try okonomiyaki, a pancake-like dish. There are numerous variations to choose from and if you can't decide there is still the grill-it-yourself option.

Photo: Alpha (image cropped)

Address: 2-3-17, Sennichimae, Chuo-ku, Osaka-shi, Osaka

Public Transport: Metro Station: Namba Station

Opening hours: Monday-Friday: 17.00-01.00,

Saturday-Sunday: 12.00-00.00

Phone: +81 6 6359 2951

Internet: [www.2951.jp](http://www.2951.jp)

### Splendido



Restaurant Splendido can be found at the Ritz Carlton Hotel. Here you can enjoy Italian dishes in a cosy atmosphere.

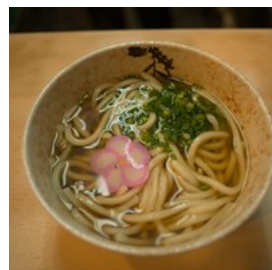
Photo: Samueles

Address: 2-5-25 Umeda, Kita-ku, 1F The Ritz-Carlton Osaka, Osaka

Phone: +81 6 6343 7020

Internet: [www.ritz-carlton.co.jp](http://www.ritz-carlton.co.jp)

### Tsurutontan Soemoncho



Another great noodle place is Tsurutontan Soemoncho. Make sure you are hungry when you come here since the portions are really big

and the food is delicious.

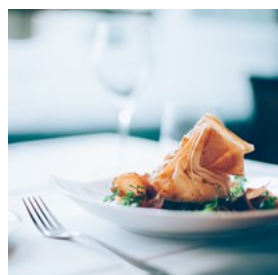
Photo: peaksignal

Address: 3-17 Soemoncho, Chuo-ku, Osaka

Phone: +81 6 6211 0021

Internet: [www.tsurutontan.co.jp](http://www.tsurutontan.co.jp)

## Hajime



This Michelin restaurant has been described as mind-blowing, exceptional, artistic and delicious. Hajime is a great place to go if you want something extraordinary. Here, every dish is a like a piece of art and every desert like a dream come true.

Photo: Unsplash

Address: 1-9-11-1F Edobori, Nishi-ku, Osaka

Phone: +81 6 6447 6688

Internet: [www.hajime-artistes.com](http://www.hajime-artistes.com)

## Outback Steakhouse Umeda



If you are craving a nice steak you can head to Outback Steakhouse Umeda. This restaurant can be found in various places throughout Japan and the world, bringing the best of Australian cuisine.

Photo: Waptaff (image cropped)

Address: 2-1-24 Umeda, Kita-ku, 1F, Osaka

Phone: +81 6 6457 7121

Internet: [www.outbacksteakhouse.co.jp](http://www.outbacksteakhouse.co.jp)

Email: [info@outbacksteakhouse.co.jp](mailto:info@outbacksteakhouse.co.jp)

## Fujiya



This restaurant fuses the best of Japanese, Italian and Spanish dishes into an outstanding menu. Try the refreshing creations of crab spaghetti and enjoy seasonable ingredients from the region. The friendly staff is happy to offer you a selection of great wine with your menu.

Photo: amazingindian

Address: 2-4-14, Yariyamachi, Chuo-ku, Osaka

Public Transport: Metro Stop: Sakaisujihonmachi station

Opening hours: Daily 12.00-13.00, 18.00-20.00

Internet: [www.fujiya1935.com](http://www.fujiya1935.com)

## Mizuno



This is Osakas oldest pancake house and offers you mouthwatering variants with different ingredients and toppings. Mizuno has traditional Japanese pancakes for every taste and every meal of the day.

Photo: Lil' Dee (image cropped)

Address: 1-4-15, Dotonbori, Chuo-ku, Osaka

Public Transport: Metro Stop: Namba Station or Nihonbashi Station

Opening hours: Daily: 11.00-22.00

Phone: +81 6 6212 6360

Internet: [www.mizuno-osaka.com](http://www.mizuno-osaka.com)

## Harukoma Sushi



Located in Japan's longest shopping arcade Tenjinbashisuji is the fabled Harukoma Sushi, recognisable if only by the line leading up to its inconspicuous front door. Lines move fast,

however, and the superb quality of the sushi and sashimi served here are certainly worth the short wait. Price to quality ratio is among the best in town.

Photo: GunnerL/Shutterstock.com

Address: 5-5-2 Tenjinbashi, Kita-ku, Osaka

Phone: +81 6 6351 4319

## CAFES



Toa55 / Shutterstock.com

Café culture is thriving in Osaka, where novelties such as the manga craze have taken over many venues. In addition, the Japanese are caffeine fanatics and kissaten (coffee shops) have been set up on every corner to cater to this demand.

### Pop ID Maid Cafe



Maid cafes are a uniquely Japanese experience, and one that should not be missed. Beautiful young women dressed like maids serve customers

drinks and sweets while interacting with them and playing games in bright, colourful and kawaii cafes. Pop ID is known for being especially family-friendly, and also happens to be the home of pop idol trio Pigu, which can occasionally be seen performing on the cafes small stage.

Photo: Daniel Valenzuela / ArrivalGuides

Address: Naniwa Ward, Nipponbashi, 5 Chome-5-18-25, Osaka

Opening hours: Mon-Fri 3pm-10pm, Sat-Sun 11:30am-10pm

Phone: +81 6 6537 7972

Internet: popid.jp

### Planet 3rd



Planet 3rd is a cute and hip little café with cool decor and a nice atmosphere. They serve an American breakfast between 7am and noon and have free internet access.

Photo: fancycrave1

Address: Nishi-Shinsaibashi 1-5-24, Hearton Hotel 1F, Osaka

Public Transport: Metro Stop: Shinsaibashi

Opening hours: Daily: 07.00-00.00

Phone: +81 6 6282 5277

### Yukicharyo By Solviva



An extensive drinks list (plenty of Chinese teas, smoothies and matcha cappucino), vegetarian curries and organic cakes top the menu. Yukicharyo

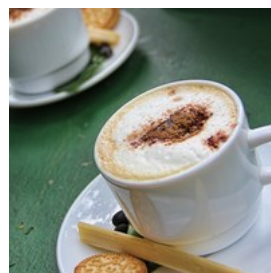
By Solviva is a non-smoking café.

Photo: condesign

Address: Namba 5-1-60, Namba City 2F, Osaka

Phone: +81 6 6644 2782

### French Bistro Rue D'or



You can find French Bistro Rue D'or at The St. Regis Osaka. Here you can enjoy a tasty croissant and a café au lait. You can also enjoy a nice lunch accompanied by a glass of French wine.

Photo: Greg Montani

Address: 3-6-12 Honmachi, Chuo-ku, Osaka

Opening hours: Daily: 6:30-10:00, 17:30-22:00

Phone: +81 6 6258 3333

Internet: [www.stregisosaka.co.jp](http://www.stregisosaka.co.jp)

### Cook House Hommachi



Cook House Hommachi is a cute little food and bakery shop. Here you can stop by while touring for something filling or a good cup of coffee.

Photo: kerdkanno

Address: 6-1-55 Uehommachi, Tennoji-ku, Kintetsu

Uehommachi 1F, Osaka

Phone: +81 6 6775 5377

Internet: [www.cookhouse.jp](http://www.cookhouse.jp)

### BARS & NIGHTLIFE



Type specimen (image cropped)

Osaka's never ending, lively bar scene generally revolves around specific wards. Minami attracts the young, hip clientele whilst Kita tends to cater to a more mature crowd. Music and an innovative mixture of bar-come-nightclub venues are on offer to suit most trends, persuasions and moods, equipped to entertain you until the early hours of the evening, whatever you may be looking for. "Kampai!"

### Murphy's



Murphy's is a popular and well established Irish bar, which attracts an eclectic mix of Japanese and Western clientele. For all sports enthusiasts, their 100 inch screen is the ideal way to watch international and domestic sports on.

Photo: Kevin Curtis

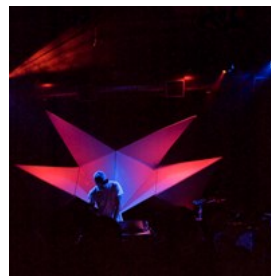
Address: 1-6-31 Higashi-shinsaibashi, Lead Plaza 6F, Osaka

Public Transport: Metro Stop: Nagahoribashi

Phone: +81 6 6282 0677

Internet: [www.murphysosaka.com](http://www.murphysosaka.com)

### Club Joule



Club Joule is all Trance lovers' paradise. The club is very popular and attracts a mostly young audience. Besides hard house/trance, you can also enjoy hip-hop at this modern club.

Photo: Carl Nenzen Loven

Address: 2-11-30 Nishi-shinsaibashi, Osaka

Phone: +81 6 6214 1223

Internet: [club-joule.com](http://club-joule.com)

Email: [info@club-joule.com](mailto:info@club-joule.com)

### Royal Horse



This jazz club and restaurant offers live music accompanied with great food. This is a good place to enjoy some of the best whiskeys and brandies of the area. The staff is friendly and the prices reasonable.

Photo: Jens Thekkeveettil

Address: 15-13 Toganocho, OsakaKita Ward, Osaka

Phone: +81 6 6312 8958

Internet: [www.royal-horse.jp](http://www.royal-horse.jp)

### The Blarney Stone



This Irish Pub in the middle of Osaka is the ideal location for celebrating a night on the town. Here you can catch regular specials on the

cocktail menu and live on-stage events. Bring your friends or meet some new inside. You won't regret stepping into Blarney Stone Umeda.

Photo: Pawel Kadysz

Address: 6F Sonezaki Center Biru 2-10-15 Sonezaki Kita-ku, Ōsaka

Opening hours: Monday-Thursday: 17.00-01.00,

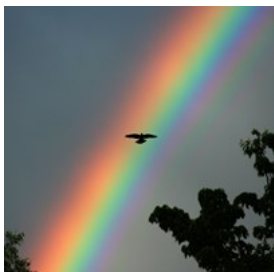
Friday-Saturday: 17.00-05.00, Sunday: 15.30-05.00

Phone: +81 6-6364-2001

Internet: [www.the-blarney-stone.com](http://www.the-blarney-stone.com)

Email: [tom@the-blarney-stone.com](mailto:tom@the-blarney-stone.com)

### Physique Pride



If you are looking for an open-minded and foreigner friendly gay-bar, the Physique Pride is your place. Drop in and find a dedicated

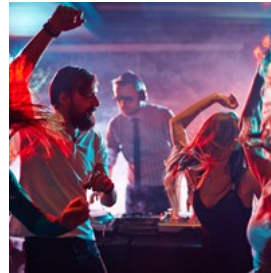
party crowd having a good time on the dancefloor or hang out with some friends at the bar.

Photo: Charles Tilford (image cropped)

Address: 8-23 Doyama-cho, Sanyo-Kaikan

Phone: +81 6 6361 2430

### Owl Osaka



Owl Osaka is your number one address for live music, events and performances. In the heart of the Umeda district, this venue

dazzles with an outstanding concert hall and exciting acts. Check their website for upcoming events and keep an eye on the happy hours.

Photo: Pressmaster / Shutterstock.com

Address: Umeda Rakutenchi Building B1, 5-1 Kakuda-Cho, Kita Ward, Osaka

Opening hours: Daily: 19.00-01.00

Phone: +81 6-6362-0822

Internet: [www.owl-osaka.net](http://www.owl-osaka.net)

Email: [info@owl-osaka.net](mailto:info@owl-osaka.net)

### Pure Osaka



Spirits are high in this nightlife venue. The place is well-known for its unending parties and satisfied guests. While the tight program

features various events, you can also book the club for a private party. You will never see bored faces in this place, only pure fun!

Photo: Pressmaster / Shutterstock.com

Address: Diamond Bldg. B1 2-3-12 Shinsaibashi suji, Chuo-ku, Osaka

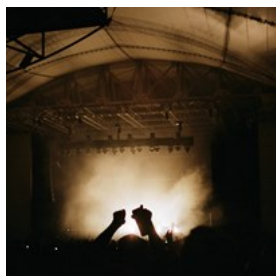
Opening hours: Friday-Saturday: 22.00-05.00

Phone: +81 6 6214 6600

Internet: [www.clubpure.com](http://www.clubpure.com)

Email: [info@pure-osaka.com](mailto:info@pure-osaka.com)

### Club Life



Hip Hop, Reggae, House – you name it. Club Life is a hot meeting point among the young party crowd. Here you can dance until early morning

hours, share a story over some drinks and meet new people. Enjoy yourself and drop into Club Life!

Photo: Daniel Ebersole

Address: Chuo Ward, Higashishinsaibashi, 2 Chome-8-12, Osaka

Opening hours: Daily: 20.00-06.00

Phone: +81 6 6484 3264

Internet: [www.clublife-japan.com](http://www.clublife-japan.com)

Email: [life.since2005@yahoo.com](mailto:life.since2005@yahoo.com)

### Cherry Bomb



With weekly events such as Taco Tuesday, Fry up Friday or Buffalo Saturday you won't ever get bored dropping into this Rock Bar. The music

between Hard Rock and Pop will keep your spirits high. Try some of that great craft-beer from local micro-breweries and mingle with the international clientele.

Photo: Domakhina Mariia / Shutterstock.com

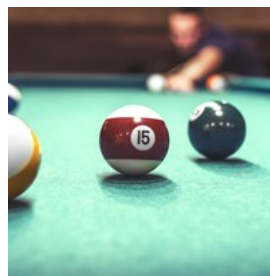
Address: Chuo Ku Higashishinsaibashi 2-4-8 5f, Osaka

Public Transport: Metro Stop: Shinsaibashi Station, Nagahoribashi Station

Opening hours: Monday, Wednesday, Thursday: 21.00-04.00, Tuesday: 19.00-04.00, Friday-Saturday: 20.00-06.00

Phone: +81 80 4242 2357

### Balabushka



You want to shoot some pool? Play some darts? Then Balabushka is the ideal place for your night out on the town. Here you can compete with friends

and strangers, and enjoy nice drafts during your stay. When you get tired, you can take a seat on the comfy sofas in the loft.

Photo: Denis Rozhnovsky / Shutterstock.com

Address: Mittera Kaikan 4F 2-9-5 Nishishinsaibashi, Chuo-ku, Osaka

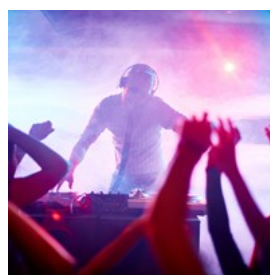
Public Transport: Metro Stop: Shinsaibashi Station

Opening hours: Monday-Thursday: 18.00-03.00, Friday, Saturday: 18.00-05.00

Phone: +81 6 6211 5369

Internet: [www.balabushka.jp](http://www.balabushka.jp)

### Ghost Ultra Lounge



This dance club will keep you up all night long. The music ranges from R'n'B to Hip Hop or House and gives you the chance to move your body to the

beat. International guests are warmly welcomed within and the staff will take good care of you. Note that the party usually starts late here, so best drop by around midnight.

Photo: Pressmaster / Shutterstock.com

Address: Shinsaibashi WEST B1F, 2-17-3 Nishi-Shinsaibashi, Chuo-ku, Osaka

Opening hours: Thursday-Tuesday: 22.00-late

Phone: +81 6 6214 0545

Internet: [www.ghostosaka.com](http://www.ghostosaka.com)

### T.N.T. Craft Beer Pub and Bottle Shop



As the name already suggest, this is your spot for Craft Beer to drink and take home. The modern interior expresses a DIY culture

and will make you immediately feel at home. Tell the friendly staff your preferences and you will receive professional advice on your perfect match. Beer-lovers don't want to miss this pub on their travel itinerary.

Photo: Brent Hofacker / Shutterstock.com

Address: 1-2-5 Sangenya Higashi, Taisho-ku, Osaka

Public Transport: Metro Stop: Taisho Station

Opening hours: Monday-Friday: 17.00-00.00,

Saturday-Sunday: 16.00-00.00

Phone: +81 80 4242 2357

### G3



Think dazzling lights, think happy people, think G3. This is the insider's tip in Osaka's nightlife and leaves nothing to be desired. The place

features regular DJ sets, has dance as well as chill-out floors and offers you a special all you can drink plan. What are you waiting for?

Photo: Anthony DELANOIX

Address: Moon Light Bldg 2F, 7-7, Souemoncho, Chuou-ku, Osaka

Public Transport: Metro Stop: Namba Station

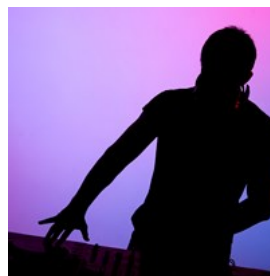
Opening hours: Daily: 22.00-late

Phone: +81 6 6214 0798

Internet: [www.g3-osaka.net](http://www.g3-osaka.net)

Email: [info@g3-osaka.net](mailto:info@g3-osaka.net)

### Club Ammona



If you are looking for a luxury nightlife experience, check out Club Ammona. Between live performances and theme parties you can

even get beauty treatments in the upbeat club. They have regular hairdressing session and nail salon within. Beautify yourself and drop directly into the party - Club Ammona makes it possible.

Photo: VGstockstudio / Shutterstock.com

Address: Tamahachi Bldg 2F, 2-3-22, Higashi Shinsaibashi, Chuo-ku, Osaka

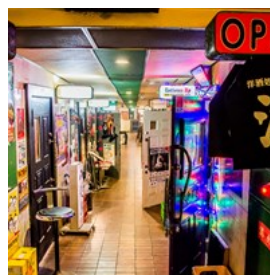
Opening hours: Daily: 22.00-01.00

Phone: +81 6 6211 3993

Internet: [www.ammona.jp](http://www.ammona.jp)

Email: [info@ammona.jp](mailto:info@ammona.jp)

### Misono Building



The second and third floors of this somewhat dilapidated building in the Ura-Namba district hide some of the most unique and interesting

bars in Osaka. The long narrow halls are lined on either side by tiny, intimate bars, many of which have an interesting theme, such as retro video games, offering some of the city's best nightlife.

Photo: Daniel Valenzuela / ArrivalGuides

Address: 2nd fl, Misono Bldg, 2-3-9 Sennichi-mae, Chūō-ku, Osaka

### Garage 39



Osaka's craft beer scene has gone from great to prolific in recent years, and garage 39 is one of its finest exponents. The food is next-level (you

really can't go wrong ordering here), but the biggest draw is the varied selection of craft beers, as well as the relative lack of tourists.

Photo: MaxyM / Shutterstock.com

Address: Chuo Ward, Awajimachi, 2 Chome-5-15, Osaka

Opening hours: Mon-Sat 5pm-12am

Phone: +81 6 6202 1239

Internet: [www.garage39.com](http://www.garage39.com)

## SHOPPING



Curioso / Shutterstock.com

Osaka's shopping areas can be divided into four districts: Umeda, Namba, Shinsai-bashi and Tennoji. Umeda has some of the city's largest department stores. Namba, also known as Minami, has the best food culture. Shinsia-bashi is arguably the main shopping area, where you will also find the popular Amerika-mura, a district with many American style shops. This is the place where many young Japanese come to check out the latest trends or just "hang out". Look out for the tell-tale Statue of Liberty. At the Tennoji district you will find both priceless antiques and contemporary fashion.

### Osaka Station City



The Osaka Station City is not only the main railway station in Umeda but also a popular shopping place in the city. If you arrive to Osaka by train you can

directly dive into shopping life and check out the many department stores and fashion centers within. Take your time to stroll through the building, there is much to see.

Photo: Daniel Valenzuela / ArrivalGuides

Address: Osaka Prefecture, Osaka

Public Transport: Osaka Station, Kitashinchi Station

Phone: +81 6 6458 0212

### Hankyu Department Store



In the Umeda district lies Hankyu, Japan's largest chain of department stores. This is a flagship store situated at Hankyu Terminal in Umeda. The interior is exclusive, just as other Hankyu stores across Japan. The brands are both International and Japanese, such as GAP, Miyake, Nicole Farhi, Kenzo and Cerruti. If you go there, do not miss the food market on the two bottom floors, which has become known for its high quality and service.

Photo: Kanchi1979 (image cropped)

Address: 8-7 Kakuda-cho, Kita-ku, Osaka

Opening hours: Monday-Thursday, Sunday: 10.00-20.00,  
Friday-Saturday: 10.00-21.00

Phone: +81 6 361 1381

Internet: [www.hankyu-dept.co.jp](http://www.hankyu-dept.co.jp)

### Hep 5 Department Store



There are over 150 stores in the "hip" Hep 5, also in the Umeda district. Most of them are fashion retail shops that suit young costumers, but people of all ages can find something of interest at this department store. There is a Disney store and a Snoopy Town Shop for the children, all kinds of clothing stores (some of them provide discounted



clothes), a food department and lots of other things. The greatest attraction in Hep 5 must still be the large Ferris wheel, from which you will get an outstanding overview of central Umeda district of Osaka.

Photo: Daniel Ng (image cropped)  
Address: 5-15 Kakuda-cho, Osaka  
Opening hours: Daily: 11.00-23.00  
Phone: +81 6 6313 0501  
Internet: [www.hepfive.jp](http://www.hepfive.jp)

### Flea Market at Ohatsu Tenjin Shrine



There are several markets worth a visit and they are often set up around the temples. At the flea market at Ohatsu Tenjin Shrine (Umeda), held twice a month (1st and 3rd Friday of every month), you will find many works of art and antiques. The market has 30 to 40 interesting antique shops. While it might not be a large market, the quality of its items is high.

Photo: domeckopol  
Address: 2-5-4 Sonezaki, Kita-ku, Osaka  
Phone: +81 6 6311 0895  
Internet: [www.tuyutenjin.com](http://www.tuyutenjin.com)

### Daishie Market at Shitennoji Temple



The Daishie Market at Shitennoji Temple is held monthly, and has a wide variety of second hand clothing, antiques and traditional food to sample. The market is held the 21st of every month, and is located next to the Shitennoji Temple (Tennoji district).

Photo: halfrain (image cropped)  
Address: 1-11-18 Shitennoji, Tennoji-ku, Osaka

### Central Wholesale Mart



This food market is sought after for its fresh produce. The market was established in 1931, and specialises on fish but also has everything from high-quality meat, eggs, vegetables and fruit, to other more unusual ingredients.

Photo: Cyril Bèle (image cropped)  
Address: 1-1-86, Noda, Fukushima-ku, Osaka  
Phone: +81 6 6469 7850

### Kintetsu Department Store



This mall is situated in the Tennoji district. It sells items like clothing, food, cosmetics, accessories, electrical appliances, bedlinen and furniture. Among international top brands, there are also traditional Japanese items, kimonos and ceramics. On the ninth floor Kintetsu has an art gallery which hosts exhibitions and art events.

Photo: Own work (image cropped)  
Address: 1-1-43 Abeno-suji, Abeno-ku, Osaka  
Phone: +81 6 6624 1111  
Internet: [www.d-kintetsu.co.jp](http://www.d-kintetsu.co.jp)

### Shinsaibashi



Another popular area is Shinsaibashi. This area features not only some of the best fashion stores in the world but also a great nightlife and local food.

Photo: Daniel Valenzuela / ArrivalGuides  
Address: Shinsaibashi, Osaka

### Amerika-mura



This shopping area in Osaka is a temple for fashionistas and vintage fans. The shops here sell America-inspired clothes, shoes and feature a number of second hand shops for records and, again, fashion. A shopping heaven during day times, the district is also worth visiting at night as it turns into a vibrant party location.

Photo: Daniel Valenzuela / ArrivalGuides

Address: 1~2 chome, Nishisinsaibashi, Chuo-ku, Osaka

Public Transport: Metro Stop: Shinsaibashi Station

### Yodobashi



Do you need a new memory card for your camera, a back-up charging device for your phone or a fresh set of headphones? Then there's no better place to go than Yodobashi Camera. Within you get all kinds of electronic devices, good services and low prices. In case you get hungry during your shopping tour there are also a number of sweets and gourmet shops within the building.

Photo: Nomad\_Soul / Shutterstock.com

Address: 1-1 Ofukacho Kita-ku, Osaka

Public Transport: Metro Stop: Osaka Station or Umeda Station

Opening hours: Shopping: 09.30-21.30, Dining: 11.00-23.00

Phone: +81 6 4802 1010

Internet: [www.yodobashi-umeda.com](http://www.yodobashi-umeda.com)

### Kuromon Ichiba



Kuromon Ichiba, the Black Gate, is a huge market place that will surprise you with delicacies of the area. Around 200 shops and stalls will offer you fresh fruit, healthy vegetables or meat and also deliver restaurants nearby. Mingle with the locals and taste Japan at this shopping market.

Photo: Daniel Valenzuela / ArrivalGuides

Address: 2 Chome-4-1 Nipponbashi, Chuo Ward, Osaka

Public Transport: Metro Stop: Nippombashi Station

Phone: +81 6 6631 0007

Internet: [www.kuromon.com](http://www.kuromon.com)

### Nipponbashi



Near Sakaisuji Avenue you can find an electronics paradise at Nipponbashi. Better known as "Den-Den Town", the district offers you collectibles, various manga and comic books, as well as movies and DVDs. The vast offer and the low prices make this area the ideal shopping location to browse and buy.

Photo: Cory Doctorow (image cropped)

Address: Nipponbashi 3 chome, Sakai-Suji, Osaka

### Abeno Harukas



Abeno Harukas is not only Osakas biggest skyscraper but also holds one of the largest department stores in all of Japan. On 100,000 square meters you can find stores from well-known brands and high quality interior design shops. If you're looking for some

excitement besides shopping you can climb the 60th floor and enjoy Osaka from above on the building's observation deck.

Photo: Pressmaster / Shutterstock.com  
Address: 545-8545 Osaka Prefecture, Osaka  
Opening hours: Daily: 10.00-22.00  
Phone: +81 6 6624 1111  
Internet: [www.abenoharukas-300.jp](http://www.abenoharukas-300.jp)

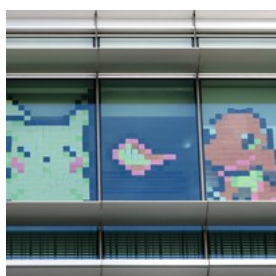
### Grand Front Osaka



This shopping mall is a paradise for bargain hunters. Here you can get the latest fashion, high-end electronics and modern furniture. A number of restaurants and cafes provide refreshments during a long day of shopping. You won't leave this place empty handed.

Photo: Daniel Valenzuela / ArrivalGuides  
Address: 530-0011 Osaka Prefecture, Osaka  
Opening hours: Daily: 10.00-21.00  
Phone: +81 6 6372 6300  
Internet: [www.grandfront-osaka.jp](http://www.grandfront-osaka.jp)

### Pokemon Center



This place will warm the hearts of retro game fans. This shop is dedicated to the little monsters and inside you will find collectibles, kitsch and everything in between. Kids and grown-up Poke-buffs will love this store. Step in and catch 'em all!

Photo: JAM Project (image cropped)  
Address: Daimaru Umeda Store 13F, 3-1-1 Umeda, Kita-ku, Osaka  
Public Transport: Metro Stop: Osaka Station or Hanshin Umeda Station  
Opening hours: Daily: 10.00-20.00

Phone: +81 6 6346 6002  
Internet: [www.pokemon.co.jp](http://www.pokemon.co.jp)

### Mitsui Outlet Park Osakatsurumi



Sportsgear, brand Jeans, urban fashion – you name it. This outlet center will fulfill your bargain dreams. Here you can buy all your favourite brands for discount prices. Popular also with the locals, it can get quite crowded in the evening hours so you might want to make sure to step in early in the day.

Photo: Own work (image cropped)  
Address: 2-7-70 Mattaomiya, Osaka  
Phone: +81 6 6915 3939  
Internet: [www.31op.com](http://www.31op.com)

### Whity



This underground shopping mall leads you directly to the Osaka main train station. This unusual place holds a number of fashion stores as well as cafes and restaurants for you. Don't forget to bring comfy shoes; you will want to walk around a lot in there!

Photo: MJTH / Shutterstock.com  
Address: Umeda Chikagai, Komatsubaracho, Kita-ku, Osaka  
Phone: +81 6 6312 5511  
Internet: [whity.osaka-chikagai.jp](http://whity.osaka-chikagai.jp)

### Tenjinbashisuji Shopping Street



The longest shopping street in Osaka and all of Japan, Tenjinbashisuji stretches some 2.6km from north to south of the city, and is a must-visit

for shopaholics and souvenir hunters. The arcade houses over 600 shops and stores, along with street food vendors' stalls, restaurants, pachinko parlors and more. Here you can buy everything from Manga comics to Japanese knife sets, local delicacies and teas, clothing, and more.

Photo: oneinchpunch / Shutterstock.com

Address: Tenjimbashi, Kita-ku, Osaka

Public Transport: Metro Stop: Ogimachi Station,

Tenjimbashisuji 6-chome or Minamimorimachi Station

Internet: [www.osaka-info.jp/en/ofc/201101](http://www.osaka-info.jp/en/ofc/201101)

### Lucua



This shopping center is a heaven for urban shoppers. Inside you can mingle with the hip local crowd looking for the latest fashion trends.

Whether office or party life, you will find dresses for every occasion at Lucua.

Photo: Axel Bueckert / Shutterstock.com

Address: 3-1-3 Umeda, Kita-ku, Osaka

Phone: +81 6 6151 1111

Internet: [www.lucua.jp](http://www.lucua.jp)

### Ota-Road



Ota-Road is Osaka's answer to Akihabara, an otaku culture paradise where lovers of contemporary Japanese pop culture can find

merchandise and collectibles related to their favorite anime, manga and video games. There are also a number of arcades, hobby shops and maid cafes, which should not be missed.

Photo: Daniel Valenzuela / ArrivalGuides

## TOURIST INFORMATION



beeboys / Shutterstock.com

### Kansai International Airport



Kansai International Airport is located 50 kilometers south of Osaka. The simplest way to travel between Osaka and the airport is by

train. You can also choose between different bus services and shuttles. Airport limousine buses go to more specific places and hotels in Osaka. A journey to Osaka Station takes approximately one hour.

There is also a high speed ferry service that takes you to Kobe Airport.

Photo: Juan Garces

Address: Kansai International Airport, Osaka

Phone: +81 72 455 2500

Internet: [www.kansai-airport.or.jp](http://www.kansai-airport.or.jp)

### Public transport



The subway provides the fastest and most efficient way of getting around.

Lines operate from early in the morning until midnight. There is a

number of travel passes for Osaka and the

Kansai region available. A one-day pass is valid for unlimited travel on subways, the tram line and city buses. Multiple Ride Cards can be used until their fare expires.

Photo: Pierre-Luc Auclair  
Internet: [www.kotsu.city.osaka.lg.jp](http://www.kotsu.city.osaka.lg.jp)

### Taxi



Taxis are a good way of getting around. You can call one or hail one down where it is safe to stop. Chidori Taxi Co +81 6 6661 2181 Toho Taxi

Co  
+81 6 6659 2523

Photo: ArrivalGuides

### Post



Look for red signs to find a post office or mailbox. Post offices are generally open between 9.00 and 17.00. Osaka Central Post Office:

Photo: Andy Fuchs  
Address: 3-2-4, Umeda, Kita-ku, Osaka  
Internet: [www.post.japanpost.jp](http://www.post.japanpost.jp)

### Pharmacy



Considering that Osaka is the third biggest city in Japan, you can easily find a pharmacy here. Ask your hotel if you need help finding one. Sugi

Pharmacy:

Photo: Gemma Garner  
Address: 2-4-1, Hannan-cho, Abeno-ku, Osaka

Phone: +81 6 4399 5061  
Internet: [www.drug-sugi.co.jp](http://www.drug-sugi.co.jp)

### Telephone



Country code: +81 Area code: 6

Photo: Jardson Almeida

### Electricity



Voltage: 100 V  
Frequency: 50/60 Hz  
Power sockets: type A / B

Photo: Stirling Tschan

**Population**  
2,666,371

**Currency**  
Japanese Yen (JPY)  
¥100 ~ US\$0,90

**Opening hours**  
General business hours are from 7.30 to 16.30 and it is generally closed on Sundays. Banks are open from Monday to Friday between 9.00 and 15.00. Times may vary depending on store and bank.

**Newspapers**  
Osaka Globe  
Daily Yomiuri

**Emergency numbers**  
Emergency, Fire Brigade: 119  
Police: 110

**Tourist information**  
Visitors' Info Centre  
532-0011 3F JR Shin-Osaka Sta. 5-16-1 Nishinakajima, Yodogawa-ku, Osaka  
Open: 9.00-18.00  
+81 6 6305 3311



Awajimachi Dori	A4	Imashi Dori	A3 B3	MORIMACHI	C2
Azuchmachii Dori	A4	KAMIYAMACHO	B1	NAKANOCHO	D1
Bingomachi Dori	A4	KAWARAMACHI	B4	Ote Dori	C4
CHU-KU	C4	Kawaramachi Dori	A4	OTEMAE	C4
DISHOMACHI	B3	Kawasakibashi Bridge	D3	Sakaisuji Avenue	B3 B4
Doshomachi Dori	A3	KITA-KU	B1	Sankyubashi Suji Street	B4
Funakoshi Cho	C3	KITAHAMA	B3	Shimamachi	C3
Fushimimachi Dori	A3 B3	Kitahama Dori	A3 B3	Tanimachisuji Avenue	C2 C3 C4
Hanshin Expressway	B1 C1	KITASHIMACHI	A2	TEMMA	C3
Hanshin Expressway Loop Line	B3 B4	Komatsubaracho	A1	TENJINNISHIMACHI	C2
HIRANOMACHI	A3	KORAIBASHI	A3	TOKUIMACHI	C4
Hiranomachi Dori	A4	Koraibashi Dori	A3	TSURIGANECHO	C3
HOMACHI	A4	Minami Honmachi Dori	A4 B4	UCHIHOMMACHI	C4
IMABASHI	B3	MIYAKOJIMA-KU	D1	YODOYABASHI	A3