



Sonoma County, California

in collaboration with Sonoma County Tourism

Photo: Sonoma County Tourism

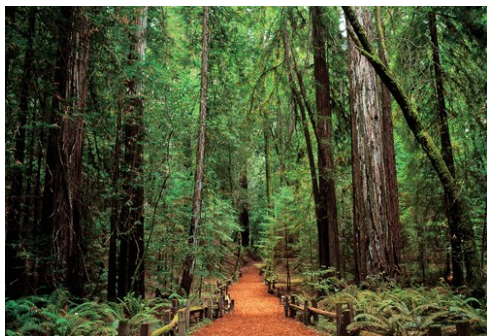
SONOMA COUNTY
• CALIFORNIA •
LIFE OPENS UP

With more than 425 wineries, miles of rugged Pacific coastline, towering redwood forests, and its close proximity to San Francisco's Golden Gate Bridge, Sonoma County is a traveler's dream vacation spot in California. Discover more than 50 nature parks that offer travelers miles of hiking and cycling trails through the redwoods or oak-studded hills. Rivers entice visitors to kayak, canoe, or simply float along the cool waters. Breathtaking Highway 1 — Pacific Coast Highway — delights visitors with crashing waves, sea lions and amazing sunsets.

Sonoma County Tourism



Sonoma County Tourism



Sonoma County Tourism

NOTE: This Guide has been limited to 20 points of interest per section. For the full guide, please visit ArrivalGuides.com

QUIZ

*What Type of Traveller
Are You Based on
Your Travel IQ?*

TAKE THE QUIZ

Top 5



Sonoma State Historic Park
Sonoma State Historic Park is the site of the northernmost Franciscan Missio...



Armstrong Redwoods State N...
Armstrong Redwoods preserves stately and magnificent Sequoia sempervirens, c...



Jack London State Historic...
Part of the allure of Sonoma Valley is this Park, boasting over 26 miles of ...



Sonoma Coast State Park
Long sandy beaches below rugged headlands, a craggy coastline with natural a...



Spring Lake Regional Park
This 320 acre park features camping, fishing, picnic areas with barbecues, a...



SONOMA COUNTY



Sonoma County Tourism

Create your own customized wine country experience by picking and choosing from the amazing tastes, sights, events, activities, and amenities found throughout Sonoma County, California.

For your tasting pleasure, Sonoma County offers world-class wines from 425-plus wineries; notable craft beers, ciders, and spirits; acclaimed restaurants; fresh produce from more than 100 organic farms; and artisan cheeses, breads, oils, sauces, and other delectable food products.

Amazing views abound, from miles of stunning coastline to picture-perfect rows of grapevines. Events and activities include festivals of all types, unique competitions, delightful shopping excursions, spa treatments, artist studio tours, art galleries and museums, kayaking, canoeing, cycling, and other indoor and outdoor pursuits.

While enjoying all this, stay in your choice of luxurious hotels, historic inns, romantic B&Bs, or modern campgrounds. Located just 45 minutes north of San Francisco, Sonoma County beckons to the adventurous, to the curious, and to lovers of the Northern California lifestyle.

Find more info here: www.sonomacounty.com

TOWNS



Sonoma County Tourism

More than 30 cities, towns and villages are located in Sonoma County. The biggest city and county seat is Santa Rosa, in the center. Other prominent towns include Sonoma, Bodega Bay, Guerneville, Petaluma, Sebastopol, Windsor, and Healdsburg.

More than 55 miles of dramatic Pacific coast create Sonoma County's western border. Sonoma Coast is rugged, dramatic, and scenic - yet approachable. It's perfect for relaxing at the beach for the day, taking a hike, camping, or planning a romantic, private picnic. Miles of trails, some wide sandy beaches, and scenic overlooks beckon travelers to get out and explore. Discover quaint sea villages here: Bodega, Bodega Bay, Jenner, Fort Ross, The Sea Ranch, and Timber Cove.

The Russian River resort area is a vacation destination surrounded by ancient redwoods in the heart of Sonoma Wine Country, just a few miles from the spectacular Sonoma Coast. The Russian River resort destination beckons travelers to explore, play, or just relax. Visitors today find charming towns - Forestville, Rio Nido, Guerneville, Monte Rio, Cazadero, and Duncans Mills - filled with local shops and galleries.

It's the array of wine regions that offer pastoral vistas that lure visitors from around the globe to stop and smell the grape vines in Sonoma County's valleys and vineyards: Petaluma, Sebastopol, Sonoma, Kenwood, Glen Ellen, Santa Rosa, Windsor, Healdsburg, Geyserville, Cloverdale, Occidental, Freestone, Rohnert Park and Cotati.

More info about all towns:

www.sonomacounty.com/sonoma-county-cities

Sonoma



Explore Sonoma County's history, with a trip to the town of Sonoma. Sonoma is home to the last Spanish-Mexican mission built in California, the location of California's oldest winery: Buena Vista Winery, and the state's oldest, continually operating family winery: Gundlach-Bundschu. Sonoma State Historic Park preserves the Sonoma Mission and the Sonoma Barracks, as well as the nearby historic home of General Vallejo. Shops, tasting rooms, restaurants, bakeries, and a historic theater line the streets around the Sonoma Plaza - an eight-acre town square, the largest in California.

Photo: Sonoma County Tourism

Address: Sonoma, CA

Internet: www.sonomacounty.com/cities/sonoma

Healdsburg



Healdsburg is a wine and culinary epicenter. Sitting at the juncture of three prime winegrowing regions — the Russian River Valley, Dry Creek Valley, and Alexander Valley wine appellations —

makes this charming town an ideal base for wine tasting, gourmet dining, art galleries and shopping.

Photo: Sonoma County Tourism

Address: Healdsburg, CA

Internet: www.sonomacounty.com/cities/healdsburg

TOP 5



Sonoma County Tourism

Looking for the best wineries in California? The top beaches on the Northern California coast? Award-winning California spas and resorts? World-class concert hall? California redwoods? Here's a brief list of Sonoma County highlights.

Sonoma State Historic Park



Sonoma State Historic Park is the site of the northernmost Franciscan Mission in California and birthplace of the California State Bear

Flag. Unlike most parks with a single plot of land and a continuous boundary, Sonoma State Historic Park is a scattering of historical attractions consisting of six midtown locations near Sonoma's Plaza: Mission San Francisco Solano, the Blue Wing Inn, Sonoma Barracks, the Toscano Hotel, the Servants Quarters and Vallejo's Home.

Photo: Sonoma County Tourism

Address: 363 3rd Street West, Sonoma, CA 95476
Phone: +1 707 938 9560
Internet: www.parks.ca.gov/?page_id=479

Armstrong Redwoods State National Reserve



Armstrong Redwoods preserves stately and magnificent Sequoia sempervirens, commonly known as the coast redwood. These trees stand together as a testament to the wonders of the natural world. The serene majestic beauty of the grove offers solace from the hustle and bustle of daily life, offering the onlooker great inspiration and a place for quiet reflection.

Photo: Sonoma County Tourism
Address: 17000 Armstrong Woods Road, Guerneville, CA 95446
Phone: +1 707 869 2015
Internet: www.parks.ca.gov/?page_id=450

Jack London State Historic Park



Part of the allure of Sonoma Valley is this Park, boasting over 26 miles of trails across 1400 acres including stunning vistas and the historic buildings from when famous writer/adventurer Jack London called this his home. It is a particularly distinctive State Park—a diverse landscape to explore, a museum and cultural legacy to discover and a magical place to experience.

The park's 1400 acres include the Beauty Ranch, Cottage, House of Happy Walls Museum, Wolf House ruins, and more than 20 miles of trails. We recommend that you allow 3 hours to visit . The park is located in Glen Ellen, California,

about 1.5 hours north of San Francisco, in Sonoma County between the towns of Sonoma and Santa Rosa.

Photo: Sonoma County Tourism
Address: 2400 London Ranch, Road Glen Ellen, CA 95442
Phone: +1 707 938 5216
Internet: www.jacklondonpark.com

Sonoma Coast State Park



Long sandy beaches below rugged headlands, a craggy coastline with natural arches and secluded coves are features that make Sonoma Coast State Park one of California's most scenic attractions.

The Beach, actually a series of beaches separated by rock bluffs and headlands, extends 17 miles from Bodega Head to Vista Trail located 4 miles north of Jenner. Beachcombers, fishermen, sunbathers and picnickers can access the beach from more than a dozen points along coast Highway 1.

Photo: Sonoma County Tourism
Address: 7095 Highway 1, Bodega Bay, CA 94923
Phone: +1 707 869 9177
Internet: www.parks.ca.gov/?page_id=451

Spring Lake Regional Park



This 320 acre park features camping, fishing, picnic areas with barbecues, and five group picnic areas. Trails are available for walking, hiking, bicycling and horseback riding. The park includes a 3-acre swimming lagoon and a 72-acre lake. Don't forget to visit the Environmental Discovery Center at Spring Lake for a wonderful

all-age educational experience. Spring Lake Regional Park is adjacent to Annadel State Park, a vast wilderness area.

Photo: Sonoma County Tourism

Address: 391 Violetti Drive Santa Rosa, CA 95409

Opening hours: The park is open 7 days a week from 7 a.m. to sunset.

Phone: +1 707 539 8092

Internet: www.parks.sonomacounty.ca.gov/Get_Outdoors/Parks/Spring_Lake_Regional_Park.aspx

DO & SEE



Sonoma County Tourism

Visiting Sonoma County – known around the world as a top wine, spa, and coastal destination – doesn't mean you're required only to taste wine, get massages, or explore more than 50 miles of Pacific Coastline. (Though, doesn't that sound delicious?). With a zip line through the top of a redwood forest, an African-style safari, and a thrilling road course, Sonoma County boasts every type of activity, ensuring you have something to write home about.

Hike through a regional park, or paddle down the Russian River in a canoe. Take a cooking class, visit a farm, learn to blend wine, play golf, dance the night away, or visit an art gallery. With 1,400 miles of lightly traveled secondary roads and a growing system of off-road bike trails, Sonoma County appeals to a dedicated cyclist attacking mountain passes or a weekend

rider eager to sip wine and cycle through the vines. Sonoma County is home to more than 50 regional parks and 11 state parks; they run from Gualala to Bodega Bay, and from the Pacific Ocean to Sonoma Valley.

Your perfect Sonoma County experience awaits. Start planning your trip today at www.sonomacounty.com/things-to-do

Sonoma State Historic Park



Sonoma State Historic Park is the site of the northernmost Franciscan Mission in California and birthplace of the California State Bear

Flag. Unlike most parks with a single plot of land and a continuous boundary, Sonoma State Historic Park is a scattering of historical attractions consisting of six midtown locations near Sonoma's Plaza: Mission San Francisco Solano, the Blue Wing Inn, Sonoma Barracks, the Toscano Hotel, the Servants Quarters and Vallejo's Home.

Photo: Sonoma County Tourism

Address: 363 3rd Street West, Sonoma, CA 95476

Phone: +1 707 938 9560

Internet: www.parks.ca.gov/?page_id=479

Charles M. Schulz Museum



View the largest collection of original Peanuts art work in the world at the Charles M. Schulz Museum. Visitors can laugh at Schulz's original comic strips featuring Snoopy and friends, learn about the art of cartooning and Schulz's role in its development, view a re-creation of Schulz's art studio, watch

animated Peanuts specials and documentaries in the Theatre.

Photo: Sonoma County Tourism

Address: 2301 Hardies Lane, Santa Rosa, CA 95403

Phone: +1 707 579 4452

Internet: www.schulzmuseum.org

Jack London State Historic Park



Part of the allure of Sonoma Valley is this Park, boasting over 26 miles of trails across 1400 acres including stunning vistas and the

historic buildings from when famous writer/adventurer Jack London called this his home. It is a particularly distinctive State Park—a diverse landscape to explore, a museum and cultural legacy to discover and a magical place to experience.

The park's 1400 acres include the Beauty Ranch, Cottage, House of Happy Walls Museum, Wolf House ruins, and more than 20 miles of trails. We recommend that you allow 3 hours to visit . The park is located in Glen Ellen, California, about 1.5 hours north of San Francisco, in Sonoma County between the towns of Sonoma and Santa Rosa.

Photo: Sonoma County Tourism

Address: 2400 London Ranch, Road Glen Ellen, CA 95442

Phone: +1 707 938 5216

Internet: www.jacklondonpark.com

Sonoma Valley Wine Trolley



An exciting wine tasting tour through historic Sonoma Valley aboard a motorized, authentic replica of a late 1890's San Francisco Cable car.

The vintage open-air design of the early California Street line offers a scenic view. As you meet fellow wine enthusiasts and wine curious guests, you will learn about the rich local history of early California, and what makes Sonoma Valley such a popular destination for wine lovers and foodies all over the world. Daily Trolley Tours Include: (10:30am - 4:30pm). Pick up: Sonoma Plaza

Photo: Sonoma County Tourism

Address: Sonoma Plaza, Sonoma, CA 95476

Opening hours: 10:30 a.m. - 4:30 p.m.

Phone: +1 707 938 2600

Tickets: www.sonomavalleywinetrolley.com

Internet: www.sonomavalleywinetrolley.com

Burke's Canoe Trips



Burke's Canoe Trips specializes in self-guided canoe and kayak trips. The company is located one mile north of Forestville on the banks

of the beautiful Russian River. Start at Burke's, paddle leisurely downstream ten miles through the heart of the redwoods, winding up at our private beach in the resort town of Guerneville. Picnic, swim, and sun bathe at various beaches along this gorgeous trip. Return shuttle service every half hour all day until 6 p.m. Reservations needed. Good swimmers only.

Photo: Sonoma County Tourism

Address: 8600 River Road, Forestville, CA 95436

Phone: +1 707 887 1222

Internet: www.burkescanoetrips.com

Johnson's Beach on the Russian River



One of the most popular beaches on the Russian River, Johnson's Beach offers canoes, single and double kayaks and pedal boats for rent, as well as umbrellas, low beach chairs and inner tubes.

There is a snack bar on the beach and beer is for sale at the boathouse. For children there is the roped off kiddies' pool. There is no charge to enter or to park. A free boat launch is available during business hours.

Photo: Sonoma County Tourism

Address: 16241 1st Street, Guerneville, CA 95446

Phone: +1 707 869 2022

Internet: www.sonomacounty.com/outdoor-activities/johnsons-beach-resort

Sonoma Canopy Tours



Discover the world-famous Northern California Redwoods in a way you have never imagined with Sonoma Canopy Tours. It's high adventure that's green, family-friendly and educational. Unique course of 7 ziplines, 2 sky bridges, a magnificent spiral staircase, and a rappel back to the forest floor. One of the ziplines is over 800 feet long! Marvel at panoramic forest views and deep ravines.

Photo: Sonoma County Tourism

Address: 6250 Bohemian Highway, Occidental, CA 95465

Phone: +1 707-874-3507

Internet: www.sonomacounty.com/outdoor-activities/sonoma-canopy-tours

Spud Point Marina



Spud Point Marina is in Bodega Harbor, approximately 60 miles northwest of San Francisco and 20 miles west of Santa Rosa. The

harbor is the hub of commercial and sport fishing in Sonoma County, and is a popular destination during crab and salmon seasons. Spud Point is one of the best Northern California ocean marinas with nearby restaurants serving fresh seafood and popular beaches to play and relax.

Photo: Sonoma County Tourism

Address: 1818 Westshore Road, Bodega Bay, CA 94923

Phone: +1 707 875 3535

Internet:

www.sonomacounty.com/outdoor-activities/spud-point-marina

WINERIES



Sonoma County Tourism

Its amazing range of terroir and microclimates distinguishes Sonoma County, one of the most diverse and special winegrowing regions in the world. The Pacific coastline, redwood forests, fertile valleys, and mountains produce an array of exceptional wines. Sonoma County stretches from the Pacific Coast in the west to the Mayacamas Mountains in the east, and is home to almost 60,000 acres of vineyards and more than 425 wineries.

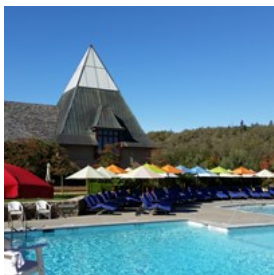
Within the borders are 17 American Viticultural Areas (AVAs, or appellations) - each with its own distinctive characteristics. The warmth of Sonoma Valley cradles rich Zinfandels and Cabernet Sauvignons, while the cool, crisp Carneros gives way to juicy Pinot Noirs, Chardonnays, and sparkling wines.

The Russian River has created a vast valley floor in both the Alexander Valley and Russian River Valley AVAs. Maritime breezes and fog are dominant influences for grape growing with cool-requiring varieties such as Pinot Noir to the south and west, and warm-requiring varieties like Cabernet Sauvignon and Zinfandel to the north and east.

Wine tasting is great fun, especially when you adventure out with a winery-savvy local guide and/or chauffeur. You can find winery tours and transportation at www.pureluxury.com, www.beauwinetours.com, and many others: www.sonomacounty.com/transportation

Find more info about wineries here:
www.sonomacounty.com/wineries

Francis Ford Coppola Winery



Francis Ford Coppola's elaborate estate is a winery from one of Hollywood's famous writers and directors. The European-style chateau

boasts a swimming pool, a museum that showcases movie memorabilia, the restaurant Rustic, vineyard views, and excellent wine tasting and tours.

Photo: Sonoma County Tourism
Address: 300 Via Archimedes, Geyserville, CA 95441
Internet: www.francisfordcoppolawinery.com

St. Francis Winery & Vineyards



The mission-style tasting room pairs the estate and small-production Artisan wines with one of the most breathtaking views in Sonoma Valley. St.

Francis Winery also offers an award-winning Wine & Food Pairing, voted "Best Restaurant in America" by OpenTable diners, a charcuterie & cheese pairing,

Photo: Sonoma County Tourism
Address: 100 Pythian Road, Santa Rosa, CA 95409
Phone: +1 707 538 9463
Internet: www.stfranciswinery.com

Kendall-Jackson Wine Estates & Gardens



No wine country experience could be complete without a stroll through Kendall-Jackson's world-class Wine Estate & Gardens. Then take your wine country experience to the next level with a seated wine & food pairing experience. These exceptional tastings pair limited-production wines with original bites created by the winery's culinary team.

Photo: Sonoma County Tourism
Address: 5007 Fulton Road, Fulton, CA 95439
Phone: +1 707 571 8100
Internet: www.kj.com

Chateau St. Jean Winery



Chateau St. Jean, with its gracious style, elegant architecture and inviting gardens and tasting rooms, is the quintessential Sonoma

winery. The winemaking estate is located at the foot of Sugarloaf Ridge in the Sonoma Valley near Kenwood, California.

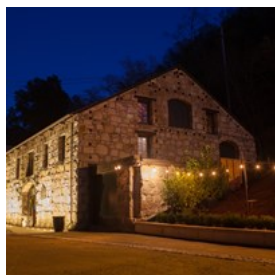
Photo: Sonoma County Tourism

Address: 8555 Sonoma Highway, Kenwood, CA 95452

Phone: +1 707 265 5235

Internet: www.chateaustjean.com

Buena Vista Winery



Before there were vineyards in every valley north of San Francisco, before Napa and Sonoma were household names, before there was a

California wine world at all, there was Buena Vista. Founded in 1857, Buena Vista is California's first premium winery, and its history is as colorful as it is proud. Today, the legend is being re-born under the vision of Jean-Charles Boisset. Just outside the town of Sonoma, the original winery is now a California Historic Landmark, and home to the Winery, Tasting Room, and new Wine Tool Museum.

Photo: Sonoma County Tourism

Address: 18000 Old Winery Road, Sonoma, CA 95476

Internet: www.buenavistawinery.com

Ledson Winery & Vineyards



Ledson family winery is located in the heart of Sonoma Valley, a short one hour drive north of San Francisco. Emerging like a gothic blast from

the past out of acres of rolling vineyards and pastoral calm, the 16,000 square foot French Normandy winery is known as "The Castle" around the world.

Photo: Sonoma County Tourism

Address: 7335 Sonoma Highway 12, Kenwood, CA 95452

Phone: +1 707 537 3810

Internet: www.ledson.com

Benziger Family Winery



Benziger is about three things: family, great wine and healthy vineyards. Benziger Family Winery tends their vineyards using certified

Biodynamic, organic and sustainable farming methods.

Photo: Sonoma County Tourism

Address: 1883 London Ranch Road, Glen Ellen, CA 95442

Phone: +1 707 935 3000

Internet: www.benziger.com

B.R. Cohn Winery



Founded by the Cohn Family in 1984, B.R. Cohn Winery is located in the heart of Sonoma Valley. The winery offers a full line of ultra-premium

wines, extra virgin olive oils, handcrafted vinegars and gourmet food products. A patio area is available for enjoyment to come and picnic and relish the beautiful views this estate has to offer.

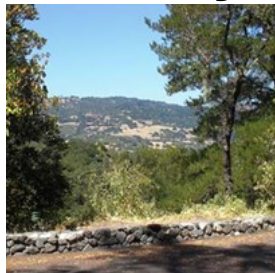
Photo: Sonoma County Tourism

Address: 15000 Sonoma Highway, Glen Ellen, CA 95442

Phone: +1 707 938 4064

Internet: www.brcohn.com

Dutcher Crossing Winery



Dutcher Crossing Winery represents an authentic and enjoyable experience for wine-lovers who visit the beautiful Dry Creek Valley. The perfect blend of award-winning wines, gorgeous wine country views and warm hospitality await visitors.

Photo: Sonoma County Tourism

Address: 8533 Dry Creek Road, Geyserville, CA 95441

Phone: +1 707 431 2700

Internet: www.dutchercrossingwinery.com

Rodney Strong Vineyards



Rodney Strong Vineyards is dedicated to crafting world-class wines that capture the essence of Sonoma County. Rodney Strong sustainably farms 13 estate vineyards and produces wines from Sonoma County's finest appellations - Alexander Valley, Russian River Valley, Chalk Hill and Sonoma Coast. The winery was founded in 1959 by Sonoma County wine pioneer Rodney D. Strong as the 13th bonded winery in the county. It was purchased by the Klein family, a fourth generation California farming family, in 1989.

Photo: Sonoma County Tourism

Address: 11455 Old Redwood Highway, Healdsburg, CA 95448

Phone: +1 707 431 1533

Internet: www.rodneystrong.com

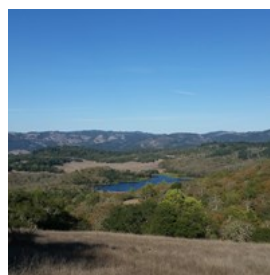
UNIQUE SPOTS



Sonoma County Tourism

Discover some hidden gems in Sonoma County. There are secret gardens, museums, little cafes, boutique wineries, sunset beaches, a Russian Fort, and nature parks with vast wilderness areas.

Trione-Annadel State Park



Trione-Annadel is an outdoor lover's paradise, offering almost 5,000 acres of rolling hills and 35 miles of trails for hikers, mountain bikers and equestrians. Peak months for wildflowers are April and May, but wildflowers bloom from January into September. The hike around Lake Ilsanjo is especially breathtaking. The park is adjacent to Spring Lake Regional Park.

Photo: Sonoma County Tourism

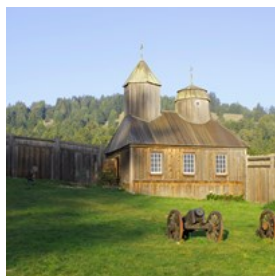
Address: 6201 Channel Drive, Santa Rosa, CA 95409

Opening hours: Daily, 8 a.m. to sunset

Phone: +1 707 539 3911

Internet: www.parks.ca.gov/?page_id=480

Fort Ross State Historic Park



Fort Ross State Historic Park is located on California's Sonoma County Coast, eleven miles north of the town of Jenner on Highway One,

and two hours' driving time north of San Francisco. The fort is situated atop a mesa which is surrounded by ravines which abut the sea. The park contains about 3,400 acres of spectacular wildlands.

Photo: Sonoma County Tourism

Address: 19005 Coast Highway, One Jenner, CA 95450

Phone: +1 707 847 3437

Internet: www.fortross.org

The Sea Ranch Chapel



This chapel is a work of art. The grounds surrounding the chapel as well as the structure itself were the gifts of Sea Ranch residents, Robert

and Betty Buffum. Upon completion in December of 1985, the chapel was dedicated in memory of Kirk Ditzler, a navy aviator, zoologist, and artist. James Hubbell, artist and architectural designer is the creative genius who combined local natural materials with gifted local contractors, craftsmen and artisans.

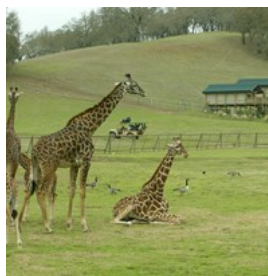
Photo: Sonoma County Tourism

Address: 40033 Hwy 1, The Sea Ranch, CA 95497

Phone: +1 707 785 2444

Internet: www.thesearanchchapel.org

Safari West Wildlife Preserve



Enjoy a "wild" time by riding in an open-air safari vehicle through this 400-acre wildlife preserve. You'll catch sight of giraffes, lemurs,

cheetahs, and wildebeests. And it gets even better — you can stay overnight in one of their luxurious safari tents.

Photo: Sonoma County Tourism

Address: 3115 Porter Creek Road, Santa Rosa, CA 95404

Phone: +1 707 579 2551

Tickets: www.safariwest.com

Internet: www.safariwest.com

Austin Creek State Recreation Area



Austin Creek State Recreation Area is adjacent to Armstrong Redwoods State Natural Reserve and is accessed through the same

entrance. With open woodlands, rolling hills, and meadows, its topography offers a strong contrast to the dense, primeval redwood forest below.

Photo: Sonoma County Tourism

Address: 17000 Armstrong Woods, Road Guerneville, CA 95446

95446

Phone: +1 707 869 9177

Internet: www.stewardscr.org/cms/pages/austin_creek.html

EVENTS



Sonoma County Tourism

With more than 425 wineries, there is always an event happening in Sonoma County. Plan your Sonoma trip around a festival or event, that celebrate Sonoma County's rich agricultural heritage - Petaluma's Butter & Egg Days, Sebastopol's Gravenstein Apple Fair, the Bodega Bay Fishermen Festival, car shows, history festivals, and others are slated to entice you to experience the best Northern California has to offer.

Find all events dates and info here:
www.sonomacounty.com/events

Taste of Sonoma (Sonoma Wine Country Weekend)



Immerse yourself in the food and wine culture of Sonoma County at Taste of Sonoma at MacMurray Estate Vineyards. With more than 200 wineries pouring thousands of wines, and over 60 local chefs whipping up divine pairings, Taste of Sonoma at MacMurray Estate Vineyards delivers a once-in-a-lifetime experience for oenophiles and foodies alike. Must be 21 years old to attend. Reserve ticket in advance. This annual event takes place every year in September.

Photo: Sonoma County Tourism

Address: MacMurray Estate Vineyards, 9015 Westside Road, Healdsburg, CA

Opening hours: 11:00am to 4:00pm

Tickets: www.sonomawinecountryweekend.com/events/taste-of-sonoma

Internet: www.sonomawinecountryweekend.com/events/taste-of-sonoma

Pinot on the River



Indulge in a weekend of in-depth tastings, seminars, vineyard tours and sumptuous food. Focus on highly-allocated, limited production Pinot

Noirs from Sonoma County and other top regions up and down the West Coast. This annual event takes place every year in October.

Photo: Sonoma County Tourism

Address: Healdsburg Plaza, Healdsburg, CA 95448

Phone: +1 707 433 0433

Tickets: www.pinotfestival.com

Internet: www.pinotfestival.com

Luther Burbank Holiday Open House



The lovely Luther Burbank Home and Gardens will be decked out in Victorian-style decor for the holidays. Enjoy festive music,

spiced tea, and cookies. Listen to carolers and let the kids make some festive crafts. This annual holiday event takes place every December.

Photo: Sonoma County Tourism

Address: 100 Santa Rosa Ave # 10, Santa Rosa, CA 95404

Opening hours: 10:00 a.m. - 4:00 p.m.

Phone: +1 707 524 5445

Internet:

www.lutherburbank.org/special-events/holiday-open-house

Winter Wineland



Join more than 100 wineries for this fun and educational weekend. Meet winemakers, tour wineries, and sample wine throughout the

Russian River, Alexander, and Dry Creek valleys in Northern Sonoma County. This annual event takes place every January.

Photo: Sonoma County Tourism

Address: 498 Moore Lane (office not event location). Event at various wineries along the Wine Road Sonoma County -

Alexander, Dry Creek, Russian River, CA 95448

Tickets: www.wineroad.com/events/buy-tickets

Internet: www.wineroad.com

California's Artisan Cheese Festival



Meet celebrated cheese makers and sample artisan cheeses at this tasty festival, held at the Sheraton Sonoma County -

Petaluma. Seminars and farm tours are available. This annual event takes place every March.

Photo: Sonoma County Tourism

Address: 745 Baywood Drive, Petaluma, CA 94954

Tickets: www.artisancheesefestival.com

Internet: www.artisancheesefestival.com

DINING



Sonoma County Tourism

Dine in an elegant hotel, a corner café, a picturesque inn, or with spectacular views of vineyards, mountains, the coastline, or the riverfront. Sonoma Wine Country chefs typically use locally produced meat, fish, cheese, fresh produce (often organically grown), olive oil, wine, and beer in creating their delicious dishes.

If you crave freshly caught crab or prime rib, Asian or Indian dishes, down-home cooking or signature California Wine Country fare, you're sure to find it in Sonoma County's more than 600-plus eateries, which include Michelin- and Zagat-rated restaurants. From Korean kim chee to salsa and chips, sushi to barbecue ribs, gourmet pizza to sirloin steak, you can find it in Sonoma County, where freshness and diversity are restaurant bywords.

Find more info about restaurants here:

www.sonomacounty.com/restaurants

Farmhouse Inn & Restaurant



The restaurant at Farmhouse Inn has historically played the cornerstone role on this property. The food is sourced from Joe and Catherine's Bartolomei ranch or local artisan

farmers and the menu is ever-changing and relies exclusively on not only what is fresh and of the moment in Sonoma County, but on what is perfect, unexpected and delightful. The service is friendly yet infinitely professional and sophisticated, and carefully orchestrated down to the smallest detail.

Photo: Sonoma County Tourism
Address: 7871 River Road, Forestville, CA 95436
Phone: +1 707 887 3300
Internet: www.farmhouseinn.com

Monti's Rotisserie & Bar



Located in Montgomery Village Shopping Center, Monti's welcomes diners with its rustic Mediterranean ambiance.

In addition to nightly specials from the large wood-fired rotisserie, there are small and big plates featuring fresh local meats and seasonal produce. Monti's offers an extensive selection of wines, all available by the glass, as well as a full bar, Happy Hour, Sunday Brunch and patio seating.

Photo: Sonoma County Tourism
Address: 714 Village Court, Santa Rosa, CA 95405
Phone: +1 707 568 4404
Internet: www.starkrestaurants.com/montis_rotisserie.html

Terrapin Creek Cafe

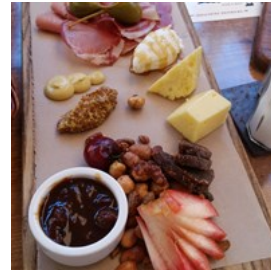


Terrapin Creek showcases both local and global cuisines using seasonal and locally sourced ingredients.

Guests can select from a menu of raw treatments, such as oysters on a half shell and carpaccio from the raw bar, to a range of appetizers and entree plates as well as an assortment of artisan cheese and desserts.

Photo: Sonoma County Tourism
Address: 1580 Eastshore Road, Bodega Bay, CA 94923
Phone: +1 707 875 2700
Internet: www.terrapincreekcafe.com

the girl and the fig



the girl & the fig features a wonderful antique bar with French aperitifs, unique and traditional cocktails, an award-winning

Rhone-Alone winelist, a seasonal menu, cheese & charcuterie platters, and outdoor garden patio seating.

Photo: Sonoma County Tourism
Address: 110 West Spain Street, Sonoma, CA 95476
Internet: www.thegirlandthefig.com

Zazu Kitchen and Farm



Since Zazu is located in the agricultural and viticultural center of Sonoma County, with the best ingredients and wine in the world, the

restaurant focuses on a menu that is "wine friendly" and uncomplicated. They are committed to the philosophy of finding ingredients as close to the restaurant as possible, harvested at peak ripeness, and doing as little as possible to alter their natural perfection. Zazu cuisine is Americana and rustic northern Italian inspired. The restaurant is situated in the new Barlow Center in Sebastopol.

Photo: Sonoma County Tourism
Address: 6770 McKinley Street, Sebastopol, CA 95472
Phone: +1 707 523 4814
Internet: www.zazukitchen.com

CAFES



Sonoma County Tourism

Sonoma County boasts a number of local coffee shops and delis, that invite visitors to relax on a shady patio or a lush outdoor garden. Many cafes roast their own coffee and serve delicious store-baked goods, pies and pastries.

Costeaux French Bakery



This Healdsburg bakery is celebrated for its legendary artisan breads and open air bakery cafe. The owners, management and staff are honored to

be awarded one of the Best Places to Work in the North Bay. Since its first Sonoma County Harvest Fair Sweepstakes for sourdough bread in 1981, it has been a consistent award winner for specialty and artisan breads which are a mainstay of the café menu offerings. This year, the Best of Show winner was Costeaux's Ciabatta. Costeaux is also well-known for legendary desserts and is a premier purveyor of wedding cakes.

Photo: Sonoma County Tourism
Address: 417 Healdsburg Avenue, Healdsburg, CA 95448
Phone: +1 707 433 1913
Internet: www.costeaux.com

Sunflower Caffé

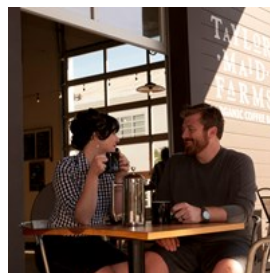


Visit Sunflower Caffé for a great latté, breakfast, lunch or snack on the Sonoma Plaza.

Established in 2007, set in California's Historic Landmark #501 "Salvador Vallejo's Home", the Sunflower Caffé is the perfect place to start the morning or enjoy lunch on the beautiful garden patio out back or at a table out front and watch the world go by.

Photo: Sonoma County Tourism
Address: 421 First Street West Sonoma, CA 95476
Phone: +1 707 996 6645
Internet: www.sonomasunflower.com

Taylor Maid Farms Coffee Shop



The flashy new two-story coffee shop and roastery at the Barlow is a stylish neighborhood hot spot, for catching up with friends over a

scone-of-the-day and exotic single-origin coffees like Organic Sidamo SRFCF from Ethiopia and Organic Aceh from Sumatra.

Photo: Sonoma County Tourism
Address: 6790 McKinley Street Suite 130, Sebastopol, CA 95472
Phone: +1 707 634 7129
Internet: www.taylormaidfarms.com

Flying Goat Coffee



Classic Mexican floor tiles fit right in with modern walnut cabinetry and crisp white walls. Dueling espresso machines help keep hundreds of folks

happily served each day. And there is abundant

outside seating. Flying Goat is situated in Santa Rosa's historic Railroad Square District, just across the street from the Santa Rosa Visitors Center, a California Welcome Center.

Photo: Sonoma County Tourism

Address: 10 Fourth Street, Santa Rosa, CA 95401

Phone: +1 707 575 1202

Internet: www.flyinggoatcoffee.com

Michelle Marie's Patisserie



Michelle Marie's Patisserie is dedicated to providing its customers with exceptional food, pastry and beverage products, representing

the best of both American and European traditions. The cafe specializes in desserts, cakes and cupcakes and also offers sandwiches in a pleasant indoor cafe.

Photo: Sonoma County Tourism

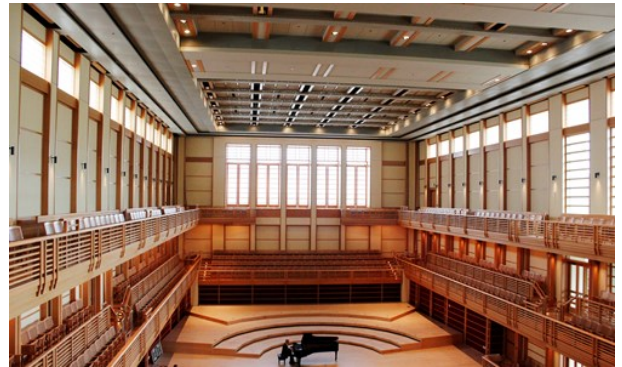
Address: 2404 Magowan Drive, Santa Rosa, CA 95405

Opening hours: Mon - Sat 6:30 am - 6:00 pm, Sun 8:00 am - 4:00 pm

Phone: +1 707 575 1214

Internet: www.michellemaries.com

BARS & NIGHTLIFE



Sonoma County Tourism

Discover your perfect evening out in Sonoma County, whether you prefer your music sitting down or up and dancing. Here you'll find live music venues, dance clubs, hip lounges, and comfy pubs.

Located in Rohnert Park, California, the Green Music Center has quickly earned a reputation as one of the top music venues in the world. The crown jewel of the facility is the 1,400-seat, European-style Joan and Sanford I. Weill Concert Hall, considered to be one of the most acoustically superb concert venues in the world.

Some of the best beer in the country comes from Sonoma County. Already known for premium wine, Sonoma County also offers a tasty choice to those who want an alternative or a complement to the traditional wine country experience. Local brewmasters are turning towards wheat and hops, creating a new California "Beer Country." Notable breweries that are open to the public include Lagunitas Brewing Company (they even have a Beer Sanctuary), Russian River Brewing Company (home of Pliny the Younger, a beer that is almost Grail-like among serious hop-heads), St. Florian's Brewery in Windsor and Ruth McGowan's Brew Pub in the beautiful town of Cloverdale in Northern Sonoma County. Other places include

bars with large selections of local beers or venues that combine great food with live music like Hopmonk Tavern in Sebastopol and Barley and Hops in the west county village of Occidental.

Find more info about nightlife and music venues here: www.sonomacounty.com/nightlife

Hopmonk Tavern



A rustic 105 year old stone and timber tavern with a world class beer garden, in the heart of the wine country. Come to Hopmonk for fresh beer, local wines, great indoor tavern atmosphere, and our remarkable beer garden. Their moderately priced menu celebrates both traditional and innovative pairings of beer and food. Beer is fun. Live acoustic music from the beer garden stage weekend days and top local, regional and national acts on the Abbey stage several nights a week.

Photo: Sonoma County Tourism
Address: 230 Petaluma Avenue, Sebastopol, CA 95472
Phone: +1 707 829 7300
Internet: www.hopmonk.com

Green Music Center



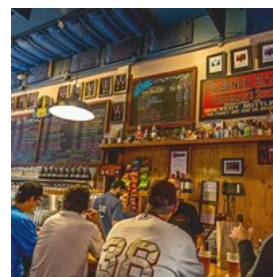
Nestled in the picturesque foothills of Northern California's esteemed wine country, the GMC is a focal point for arts in the region, with its spectacular 1400-seat Weill Hall, located on the grounds of Sonoma State University.

During warm summer months, the 30-foot rear wall of Weill Hall fully opens to the adjacent

lawns - similar to the iconic Seiji Ozawa Hall at Tanglewood after which the venue was modeled. Hundreds of picnic tables on tiered terraces and ample lawn seating expands the capacity for performances to nearly 6,000 patrons and affords concertgoers the chance to enjoy world-class music amidst the stunning settings of Wine Country.

Photo: Sonoma County Tourism
Address: 1801 E. Cotati Avenue, Rohnert Park, CA 94928
Phone: +1 866 955-6040
Tickets: www.gmc.sonoma.edu
Internet: www.gmc.sonoma.edu

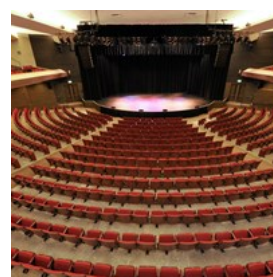
Russian River Brewing Company



Russian River Brewing Company focuses on traditional aggressively hopped California style ales, Belgian style ales, and barrel aged beers. The pub has become a community gathering place as well as a beer tourism destination (Russian River Brewing Company brews nationally award-winning beer including Pliny the Younger and Pliny the Elder). The pub also supports local bands by hosting free live shows at the pub every weekend.

Photo: Sonoma County Tourism
Address: 725 4th Street, Santa Rosa, CA 95404
Opening hours: Daily 11am - 12am
Phone: +1 707 545 2337
Internet: www.russianriverbrewing.com

Luther Burbank Center for the Arts



World-class performances of music, theater, dance, comedy, family programming and renowned speaker events. Nationally recognized

education programs, contemporary sculpture, and many popular community events.

Photo: Sonoma County Tourism

Address: 50 Mark West Springs, Road Santa Rosa, CA 95403

Phone: +1 707 546 3600

Tickets: www.lutherburbankcenter.org

Internet: www.lutherburbankcenter.org

SHOPPING



Sonoma County Tourism

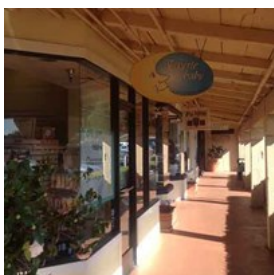
What better way to delve into the personality of a destination than by shopping. With national-brand stores, an outlet mall, specialty shops, and boutiques in darling downtowns, Sonoma County is sure to please the pickiest purchaser.

Extend the fabulous “Wine Country” feeling after you get home by taking Sonoma County with you. (Or, once you’re home, you can order more).

Find more info about shopping here:

www.sonomacounty.com/shopping

Montgomery Village Shopping Center



Montgomery Village is a premier open-air lifestyle shopping center featuring local, regional and national retailers located in the heart of

California’s Wine Country in Santa Rosa.

Beautiful landscaping and innovative “Town and Country” architecture creates the perfect ambiance for a unique shopping experience which combines superb restaurants and bistros with one-of-a-kind Owner operated boutiques as well as well-known stores such as: Chico’s, Aerosoles, J. Jill, Pendleton, Sur La Table, Talbots & Talbots, Petites, White House | Black Market and more.

Photo: Sonoma County Tourism

Address: Farmers Lane & Sonoma Avenue, Santa Rosa, CA 95405

Opening hours: Monday - Saturday: 10 a.m. - 6 p.m. , Sunday: 11 a.m. - 5 p.m.

Phone: +1 707 545 3844

Internet: www.mvshops.com

Santa Rosa Plaza Mall



Santa Rosa Plaza is the premier shopping destination in Sonoma County, offering unparalleled choice and shops found nowhere else in the North Bay. No trip through wine country would be complete without a visit to Santa Rosa Plaza! Anchored by Macy's, Sears and Forever 21, Santa Rosa Plaza features over 120 specialty stores including, Abercrombie & Fitch, Aldo, Apple, Brookstone, Crazy 8, Eddie Bauer, Gymboree, Kay Jewelers, Tillys, Papaya and Victoria's Secret.

Photo: Sonoma County Tourism

Address: 4th Street & Mendocino Avenue, Santa Rosa, CA 95401

Opening hours: Monday to Friday: 10am - 9pm, Saturday: 10am - 8pm, Sunday: 11am - 6pm

Phone: +1 707 544 7467

Internet: www.simon.com/mall/santa-rosa-plaza

Petaluma Village Premium Outlets



Located north of San Francisco at the gateway to Sonoma Wine Country. Enjoy savings of 25% to 65% every day at 60 designer and name brand outlet stores including Ann Taylor, BCBG Max Azria, Banana Republic, The Gap, Old Navy, Bose, Brooks Brothers, Coach, Jones New York, Levi's, Nike, Puma, Adidas, Saks Fifth Avenue Off 5th and more.

Photo: Sonoma County Tourism

Address: 2200 Petaluma Blvd. North, Suite 210 Petaluma, CA 94952

Opening hours: Monday - Saturday: 10 am - 9 pm Sunday: 10 am - 7 pm

Phone: +1 707 778 9300

Internet: www.sonomacounty.com/shopping/petaluma-village-premium-outlets

Coddington Mall



Coddington Mall has the stores you love! Featuring over 60 specialty shops ranging from jewelry to fashion clothes, this indoor mall is anchored by Macy's, JCPenney, Whole Foods, Nordstrom Rack and Target. While you are visiting, be sure to grab a bite to eat at BJ's Restaurant and Brewhouse, Chipotle, Jack's Urban Eats, Sea Noodle Bar or Subway. Don't forget to end your night on a sweet note, with a scoop of ice cream from Baskin Robbins, an iced coffee from Starbucks or a healthy smoothie from Jamba Juice! Coddington Mall is conveniently located off Highway 101 and Guerneville Road/Steele Lane.

Photo: Sonoma County Tourism

Address: Steele Lane & Highway 101, Santa Rosa, CA 95401

Phone: +1 707 527 5377

Internet:

www.sonomacounty.com/shopping/coddington-mall

Cornerstone Sonoma



Cornerstone Sonoma is home to a collection of unique shops and galleries. Cornerstone Gardens is an ever-changing series of walk-through gardens, showcasing new and innovative designs from the world's finest landscape architects and designers. The first such gallery-style gardens in the United States, the nine-acre Cornerstone Gardens was created as an inspiration and resource for people interested in gardens, garden design and art.

Photo: Sonoma County Tourism

Address: 23570 Highway 121, Sonoma, CA 95476

Opening hours: 10am - 5pm

Phone: +1 707 933 3010

Internet: www.cornerstonesonoma.com

ACCOMMODATIONS



Sonoma County Tourism

Have the Sonoma County getaway that's right for you. Choose a luxurious, full-service hotel for that pampered feeling. Your taste may run to a charming seaside lodge. You may be a loyal customer of a specific hotel brand - we have those, too. Sonoma County has a room to suit

your taste.

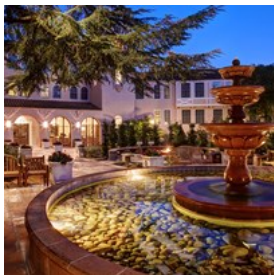
Families will find many fun and affordable options from working guest ranches to friendly motels and campgrounds in naturally beautiful settings. Find your “home away from home” with a comfortable vacation rental with all the amenities.

Sonoma County wows visitors with its selection of choices: boutique hotels, resorts, bed & breakfasts, small inns, vacation rentals, and campgrounds.

Find hotels & lodging here:

[/www.sonomacounty.com/hotels-lodging](http://www.sonomacounty.com/hotels-lodging)

Fairmont Sonoma Mission Inn & Spa



Of the luxury hotels and resorts in Sonoma Valley and neighboring Napa Valley, the Fairmont Sonoma Mission Inn is the ultimate Wine

Country destination oasis with spa, golf and a Michelin award winning restaurant, blessed by natural mineral hot springs in Sonoma Valley, Sonoma County, California.

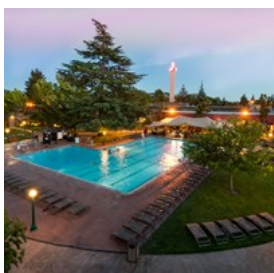
Photo: Sonoma County Tourism

Address: 100 Boyes Blvd. Sonoma, CA 95476

Phone: +1 707 938 9000

Internet: www.fairmont.com/sonoma

Flamingo Conference Resort And Spa



A historical landmark destination resort with recent remodel of lobby and 60 Superior guest rooms. The hotel is centrally located on

scenic route near Sonoma Valley wineries,

downtown Santa Rosa, Montgomery Village Shopping Center and Sonoma County Fairgrounds.

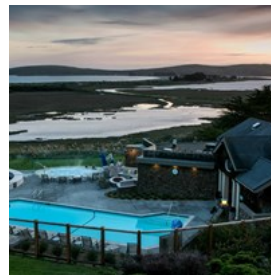
Photo: Sonoma County Tourism

Address: 2777 4th Street, Santa Rosa, CA 95405

Phone: +1 707 545 8530

Internet: www.flamingoresort.com

Bodega Bay Lodge



The Bodega Bay Lodge is nestled on a hillside surrounded by the natural beauty of the Sonoma Coast with picturesque views of the

Pacific Ocean and Bodega Bay. Whether you're in search of a romantic hideaway, family excursion or company retreat, the Bodega Bay Lodge has something for everyone. Only one hour north of San Francisco on Coast Highway One, you can enjoy spacious accommodations, Four-Diamond hospitality, award-winning cuisine, a full list of spa services, ocean-view pool, beach access and more.

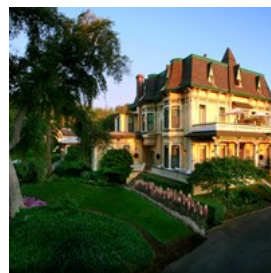
Photo: Sonoma County Tourism

Address: 103 Highway One, Bodega Bay, CA 94923

Phone: +1 707 875 3525

Internet: www.bodegabaylodge.com

Madrona Manor Wine Country Inn



Nestled in the hills above the Dry Creek Valley of Sonoma County, Madrona Manor is a beautiful Victorian estate surrounded by eight

acres of wooded and landscaped grounds. The Mansion, built in 1881, has been a destination for discerning guests seeking a stay in the gracious wine country of northern California since 1981. Enjoy a romantic meal in the award

winning restaurant, engage in quiet conversation with drinks on the veranda, or relax by a cozy fire in the winter or the pool in the summer. At the end of the day, a peaceful night's stay awaits you in any of the elegant rooms.

Photo: Sonoma County Tourism

Address: 1001 Westside Road, Healdsburg, CA 95448

Phone: +1 707 433 4231

Internet: www.madronamanor.com

Doubletree by Hilton Hotel Sonoma Wine Country



Welcome to DoubleTree Hotel Sonoma Wine Country. Sonoma County is a spectacular place to visit during all seasons of the year. Whether you are on vacation, planning a meeting, or just visiting for the weekend, the Doubletree Hotel Sonoma Wine Country is a great place to stay. Surrounded by two 18-hole PGA Certified championship golf courses, our Tuscan designed hotel features 245 spacious guest rooms, an elegant selection of suites and 18000 square feet of indoor meeting space. A scenic hour drive from the world famous San Francisco Golden Gate Bridge and only 20 minutes from the Sonoma County Airport, guests can visit over 190 wineries in the area.

Photo: Sonoma County Tourism

Address: 1 Doubletree Drive, Rohnert Park, CA 94928

Phone: +1 707 584 5466

Internet: www.doubletree.hilton.com

Farmhouse Inn



Sonoma's finest country inn. 25 rooms with full service spa and Michelin starred restaurant on site. Located in the heart of the Russian River Wine Country convenient to 200+ wineries, near Healdsburg, Santa Rosa and Sebastopol. Sophisticated comfort and classic elegance on 6 acres of gardens. Relax by the heated pool or pamper yourself with a relaxing massage. Explore the redwoods, the river, and the dramatic Sonoma coast. Sublime, farm fresh breakfast served each day.

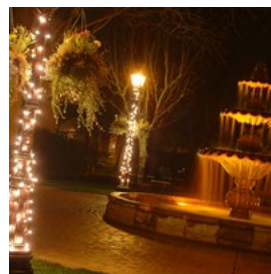
Photo: Sonoma County Tourism

Address: 7871 River Road, Forestville, CA 95436

Phone: +1 707 887 3300

Internet: www.farmhouseinn.com

Vintners Inn



Experience the magnificent wine country lifestyle at Vintners Inn, an intimate, four-diamond, 44-room luxury hotel conveniently

located in the heart of Sonoma County's famous wine country. Surrounded by the scenic Northern California landscape, 92 acres of lush vineyards, and beautifully landscaped grounds with courtyards and fountains, your deluxe guest room will become an elegant retreat from which to enjoy a wide array of activities and adventures available right here at the inn and in the many quaint, nearby communities just outside our doorstep. Just steps away from your private room, is the legendary John Ash & Co. restaurant where celebration of wine country cuisine is at its best. John Ash & Co. was the first Sonoma County restaurant to introduce the concept of

cooking seasonally with fresh, local foods and produce.

Photo: Sonoma County Tourism

Address: 4350 Barnes Road, Santa Rosa, CA 95403

Phone: +1 707 527 7687

Internet: www.vintnersinn.com

Kenwood Inn & Spa



In the heart of Sonoma County, set amidst the stunning hills of the Sonoma Valley, the Kenwood Inn and Spa is the premier destination

for visitors seeking gracious treatment, lush surroundings, and luxurious accommodations. Designed with hand-crafted artistry, the Inn has the allure of a Mediterranean villa enticing guests along walkways that meander from courtyard to terrace, from patio to spa to create the ultimate escape.

Photo: Sonoma County Tourism

Address: 10400 Sonoma Highway 12, Kenwood, CA 95452

Phone: +1 707 833 1293

Internet: www.kenwoodinn.com

Geyserville Inn



The Geyserville Inn — owned and operated by two generations of the Christensen family — has all the comforts of a modern hotel with the

charm and service of a small country inn. Rated three diamonds by AAA, and located just 80 miles north of San Francisco, Geyserville Inn is nestled between the Dry Creek and Alexander Valleys. This serene and beautiful inn is surrounded by mountains and vineyards on all sides. The inn is just minutes away from some of Sonoma County's most celebrated wineries.

Photo: Sonoma County Tourism

Address: 21714 Geyserville Avenue, Geyserville, CA 95441

Phone: +1 707 857 4343

Internet: www.geyservilleinn.com

Hyatt Vineyard Creek Hotel



Relax in this AAA Rated Four Diamond hotel with First-Class Amenities and Exceptional Service. Featuring The Brasserie Restaurant and Lounge.

Located centrally in Santa Rosa and only 20 minutes to over 200 wineries, the Hyatt Vineyard Creek Hotel offers over 20,000 sq ft of beautiful landscaped outdoor lawns and gardens, and a pool.

Photo: Sonoma County Tourism

Address: 170 Railroad Street, Santa Rosa, CA 95403

Phone: +1 707 284 1234

Internet: www.vineyardcreek.hyatt.com

CAMPING



Sonoma County Tourism

Sonoma County's campgrounds offer a full range of opportunities — campgrounds along the California Coast or next to the Russian River, out in the redwoods or adjacent to vineyards. Campgrounds vary from those with cabins (for folks who think “roughing it” is a hotel without room service) to full RV hook-ups, to primitive tent-only parks that bring you close to nature.

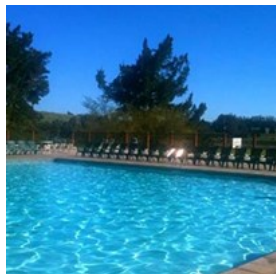
This range means exploring Sonoma County is affordable for almost any budget.

Whether you pitch a tent, lay your head down in a luxury RV, or sleep under the stars, camping remains the best way to relax, reconnect with family and friends, and explore Sonoma Wine Country's back roads.

Find all campgrounds here:

www.sonomacounty.com/campgrounds

San Francisco North/Petaluma KOA Campground



This beautiful family camping resort is rated one of the top RV campgrounds in California and the premier campground &

RV Park resort in the San Francisco Bay area. With 312 spacious sites on 70 Acres, this KOA offers the best in family, group and big-rig RV camping in a rural atmosphere. Enjoy guided tours of San Francisco (departing from the campground May-Oct.) and the Wine Country. Summer fun at KOA includes a rec program, inflatable waterslide, pool and spa, mega playground, karaoke, hayrides and live weekend entertainment.

Photo: Sonoma County Tourism

Address: 20 Rainsville Road, Petaluma, CA 94952

Phone: +1 707 763 1492

Internet: www.koa.com/campgrounds/san-francisco

Spring Lake Regional Park Campground



This 320 acre park features camping, fishing, picnic areas with barbecues, and five group picnic areas. Trails are available for walking,

hiking, bicycling and horseback riding. The park includes a 3-acre swimming lagoon and a 72-acre lake. Don't forget to visit the Environmental Discovery Center at Spring Lake for a wonderful all-age educational experience.

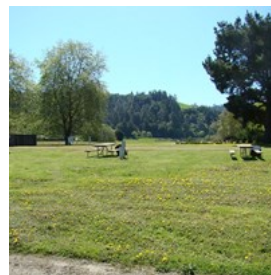
Photo: Sonoma County Tourism

Address: 391 Violetti Drive, Santa Rosa, CA 95409

Phone: +1 707 565 2267

Internet: www.sonomacounty.com/lodging-rv-campgrounds/spring-lake-regional-park

Casini Ranch Family Campground



Casini Ranch campground is nestled among beautiful hills resting on a gentle meander along the Russian River just

minutes from the Pacific Ocean in Sonoma County, California. One mile of river runs along this 110 acre part of the ranch offering campers a memorable camping experience.

Photo: Sonoma County Tourism

Address: 22855 Moscow Road, Duncans Mills, CA 95430

Internet: www.casiniranch.com

Email: reservations@casiniranch.com

Cloverdale Wine Country KOA Camping Resort



Nestled in the hills overlooking the magnificent Alexander Valley, the campground provides 60 acres for your enjoyment. Wooded

tent and RV sites, combined with charming Camping Kabins, Luxury Lodges and Deluxe Lodges make for an ideal location to setup base camp while you visit wineries, canoe, fish and marvel at the towering redwoods and the gorgeous Pacific coast. Adventures abound with the Golden Gate Bridge only 80 miles away.

Photo: Sonoma County Tourism

Address: 1166 Asti Ridge Road, Cloverdale, CA 95425

Phone: +1 707 894 3337

Internet: www.winecountrykoa.com

Doran Beach Regional Park Campground



Doran Beach Park has a 2-mile stretch of sandy beach and is a popular place for visitors to picnic, build sand castles, fly kites, surf, fish and stroll. A rock jetty at the harbor mouth provides access for fishing, crabbing and exploring sea life. The boat launch can accommodate up to 20-foot boats. A parking lot is located adjacent to the launch and can handle 30 vehicles with trailers. Additional amenities include a fish-cleaning station, boat-rinsing station and picnic areas. Accessible features include campsites, a boardwalk with viewing areas, and beach wheelchairs that are available upon request.

Photo: Sonoma County Tourism

Address: 201 Doran Beach Road, Bodega Bay, CA 94923

Phone: +1 707 875 3540

Internet: www.sonomacounty.com/lodging-rv-campgrounds/doran-beach-regional-park

TOURIST INFORMATION



Sonoma County Tourism

Sonoma County is located less than an hour north of San Francisco's Golden Gate Bridge in California.

Airport



Sonoma County is reached via direct air service on Alaska Airlines, Allegiant, and American Airlines to Charles M. Schulz -

Sonoma County Airport (STS), named after long-time Santa Rosa resident Charles M. Schulz (creator of the "Peanuts" comic strip).

Sonoma County Airport has nonstop Alaska Airlines flights from/to Los Angeles (LAX), Orange County (SNA), Portland (PDX), San Diego (SAN), and Seattle (SEA), and with American Airlines from/to (PHX), and additional destinations with United Airlines.

Nearby international airports include:

- San Francisco International (SFO)
- Oakland International (OAK)
- Sacramento International (SMF)

Photo: Sonoma County Tourism

Address: 2290 Airport Blvd., Santa Rosa, CA 95403

Phone: +1 707 565 7243

Internet: www.sonomacountyairport.org

Time Zone

Sonoma County is located in the Pacific Time zone (PST).

Public Transport

Catch the Sonoma County Airport Express (+1 707 837 8700, www.airportexpressinc.com) from San Francisco International Airport. There are four stops in Sonoma County, including the Charles M. Schulz - Sonoma County Airport (STS), where you can rent a car or take a taxi to the nearest winery.

The Golden Gate Transit (+1 415 923 2000; www.goldengate.org) operates bus 70/71/80 from San Francisco to Petaluma and to Santa Rosa. Catch it at Main and Folsom streets, at the temporary Transbay Terminal.

Ride the ferry from the San Francisco Ferry Building to Larkspur Ferry (www.goldengateferry.org/schedules/Larkspur.php). From there, catch Golden Gate Transit to Sonoma County.

Greyhound (1 800 231 2222; www.greyhound.com) operates from San Francisco to Santa Rosa. There are transfers for local buses.

Sonoma County Transit (+1 707 576 7433, www.sctransit.com) runs the bus service from Santa Rosa to Petaluma, Sonoma, and western Sonoma County, including the Russian River Valley towns.

Amtrak (1 800 872 7245; www.amtrak.com) trains travel to Martinez, with connecting buses to Santa Rosa and Healdsburg.

Sonoma-Marin Area Rail Transit (SMART) (www.sonomamarintrain.org) is a new rail

service from San Rafael to the Sonoma County Airport, stopping in several Sonoma County towns: Petaluma, Cotati, Rohnert Park and Santa Rosa. Service starts in 2017.

While in Sonoma County, plan on renting a car or book a chauffeured ride. Sonoma County has decent public transportation but, with about a million acres, the buses may not run to attractions and wineries you want to visit.

Taxi and Ride Share

Find transportation services, taxis, limousines, vans and ride share services here: www.sonomacounty.com/transportation

Telephone

U.S. country code: +1

Area Code in Sonoma County: 707

Electricity

110V AC, 60Hz

Currency

US Dollar

Internet

www.sonomacounty.com

Emergency numbers

Fire, police and ambulance: 911

Tourist information

Sonoma County Tourism
+1 707 522 5800
toll free: 1 800 576 6662
www.sonomacounty.com