

Photo: Tobias Kaeter/Shutterstock.com



Bna Ignacio/Unsplash.com



MOLPIX/Shutterstock.com



August Phunitiphat/Shutterstock.com

Singapore is a fascinating melting pot of East and West. Here the hypermodern buildings of the financial district blend with Chinatown's classic small houses. As an old trading town, Singapore is the natural place for anyone who wants to shop - the range is enormous. In addition, Singapore offers a cuisine with influences from all corners of Asia that exceeds the highest expectations.

**QUIZ**

*What Type of Traveller  
Are You Based on  
Your Travel IQ?*

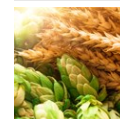
**TAKE THE QUIZ**

### Top 5



#### **Gardens by the Bay**

Gardens by the Bay are among the world's most spectacular urban developments...



#### **Tiger Brewery Tour**

Tiger lays claim to have been the first beer brand in the country, launched ...



#### **Jewel Changi Airport**

Singapore's Changi Airport has won multiple awards (voted "Best in the World...)



#### **Marina Bay Sands Observati...**

The iconic Marina Bay Sands dominates Singapore's cityscape, and is probably...



#### **Henderson Waves**

The Henderson Waves bridge is the highest pedestrian bridge in Singapore -- s...





## THE CITY



*Leonid Andronov/Shutterstock.com*

Singapore is clean, safe and efficient and the inhabitants are as proud of this as they are of the city's great financial heart beating around the clock. The harbour is the busiest in the world and capital flows on the stock exchange. All the world's banks, insurance companies and investors are represented here.

In 200 years, Singapore has gone from being a deserted island to an eminent industrial nation and major financial power, as reflected in the flourishing townscape.

A good start for anyone who wants to experience Singapore today, with its mixture of old and new, is to have a drink on Boat Quay in the late afternoon. The renovated harbour district is packed with bars and restaurants. People from the financial district also meet here after work to socialise.

Another traditional watering hole is Raffles Hotel, built in the Colonial style. Is there anything more embedded in mystic than to drink a Singapore Sling in the hotel's Long Bar? It is a fantastic environment for a drink, the perfect way to experience Singapore and perhaps the very best way of all to experience the meeting between the city's exciting history and modern times.

Anyone who is looking for the original Singapore might like to head for the crowds of Chinatown where fortune-tellers, calligraphers and temple visitors are a permanent feature of everyday life. In Little India you will find the best Sari fabrics and lots of exciting spices. Don't miss the small shops on Arab Street either.

## DO & SEE



*anekoho/Shutterstock.com*

Singapore is a hectic metropolis with bustling street life. There are many sights to see here, and you can experience everything from a drink at legendary Raffles Hotel to meeting tigers at one of the world's finest zoos.

### Gardens by the Bay



Gardens by the Bay are among the world's most spectacular urban developments. The Gardens' inauguration in 2012 marked a decisive step towards refashioning Singapore from "Garden City" to "City in a Garden" -- it's easy to see why while wandering its 100+ hectares.

The Gardens' Supertree Grove consists of 18 tree-like structures, some reaching up to 50m in height. What's hard to wrap one's mind around is how closely these "trees" mimic their natural

counterparts: overgrown with exotic plants and flowers, they mimic photosynthesis via a complex system of environmental technologies, and collect rainwater that later goes towards irrigation and fountain displays. There is a spectacular Skyway stretching between 2 of the tallest trees, which features a light and sound display at night.

Another two unmissable attractions at the Gardens are the two conservatories: the Flower Dome and Cloud Forest.

Photo: MF Choi/Shutterstock.com

Address: 18 Marina Gardens Dr, Singapore

Internet: [www.gardensbythebay.com.sg](http://www.gardensbythebay.com.sg)

### Tiger Brewery Tour



Tiger lays claim to have been the first beer brand in the country, launched in 1932. Today, the lager is the most consumed on the Asian beer market.

So, if you happen to be a beer lover and would like to gain a glance into the production facilities of the company, regular tours are taking place here, followed by the chance to enjoy a cold one, or two, on site.

Photo: Viacheslav Rubel/Shutterstock.com

Address: Jalan Ahmad Ibrahim 459, Singapore

Opening hours: Guided Tours: Tuesday - Sunday starting every full hour from 1pm - 5pm.

Phone: +65 686 030 05

Internet: [www.tigerbrewerytour.com.sg/](http://www.tigerbrewerytour.com.sg/)

Email: [brewerytour@apb.com.sg](mailto:brewerytour@apb.com.sg)

### Jewel Changi Airport



Singapore's Changi Airport has won multiple awards (voted "Best in the World" for 7 consecutive years), and the jewel in its crown of regalia is the world's tallest indoor waterfall, fittingly called just that: Jewel. The waterfall comes down from the roof, creating a breathtaking vortex which recirculates rain water. The Rain Vortex is surrounded by a multiple-level display of tropical flora, including various species of blooming orchids; the top level features a family-friendly canopy park, and there are dozens of further shopping and entertainment venues around.

One doesn't often hear of city residents doing day trips to the airport to simply spend time there, but it certainly is the case with Jewel -- you'll see many making the trip to Changi with no luggage whatsoever, with the sole purpose of visiting the Jewel.

Photo: SuperSN/Shutterstock.com

Address: 78 Airport Blvd, Singapore

Internet: [www.jewelchangiairport.com](http://www.jewelchangiairport.com)

More Info: Changi Airport

### Marina Bay Sands Observation Deck



The iconic Marina Bay Sands dominates Singapore's cityscape, and is probably the city-state's most recognisable attraction.

The imposing structure consists of three towers with a continuous lobby at the bottom (open to visitors), and topped with a spectacular SkyPark that links them all at roof level. The infinity pool is no longer accessible to those who aren't

staying at the Marina Bay Sands Hotel, but the rooftop bar is, and so is the separate Observation Deck area (access via Tower 3 basement).

Photo: MOLPIX/Shutterstock.com  
Address: 10 Bayfront Ave, Singapore  
Phone: +65 6688 8826  
Internet: <https://www.marinabaysands.com/attractions/sands-skypark.html>  
More Info: Tower 3

### Henderson Waves



The Henderson Waves bridge is the highest pedestrian bridge in Singapore -- stranding the Mount Faber Park and Telok Blangah Parks, it makes for what probably is the most exciting segment of the full Southern Ridges hike. Make it as long or short as you like (we recommend entering at HortPark and making your way there through the Treetop Walk). Keep moving west and you'll eventually arrive at a cable car station, from where you can continue on straight to the island of Sentosa.

Photo: Efire/Shutterstock.com  
Address: Henderson Road, Singapore  
Opening hours: 24/7  
Internet: [www.visitsingapore.com/see-do-singapore/architecture/modern/henderson-waves/](http://www.visitsingapore.com/see-do-singapore/architecture/modern/henderson-waves/)

### Clarke Quay



This riverside quay was once the entrepôt centre of the Singapore harbour. Now a bustling nightlife area, the run-down warehouses - "go downs" - have been turned into nightclubs, restaurants and flea markets. Though fully renovated, historical buildings have been preserved, letting

it retain its special character.

Photo: People Image Studio/Shutterstock.com  
Address: 3 River Valley Road, Singapore  
Phone: +65 6337 3292  
Internet: [www.capitaland.com/sg/malls/clarkequay/en](http://www.capitaland.com/sg/malls/clarkequay/en)  
Email: [ask-us@capitalandmallasia.com](mailto:ask-us@capitalandmallasia.com)  
More Info: Upstream from Boat Quay

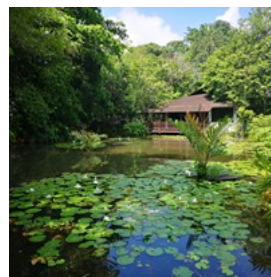
### Sentosa



The island resort of Sentosa is a marvellous one-day beach escape from the bustling city. It's an artificial island with very real sand and swaying palm trees casting pleasant shadow, as well quite a few recreation options, particularly in the Palawan Beach area. Transport connections to the mainland are ample.

Photo: Andrew-Media/Shutterstock.com  
Internet: [www.sentosa.com.sg](http://www.sentosa.com.sg)

### Sungei Buloh Reserve



Singapore does not only offer big city life and urban activities, but also spectacular stretches of pristine nature, especially in the north west, at the country's border with Malaysia. The Sungei Buloh Reserve is a great place to spot a variety of different bird species as well as lizards and other exotic animals.

Photo: Aleksandra Pachecka/Shutterstock.com  
Address: 301 Neo Tiew Crescent, Singapore  
Opening hours: Daily 7am - 7pm.  
Internet: [www.nparks.gov.sg/gardens-parks-and-nature/parks-and-nature-reserves/sungei-buloh-wetland-reserve](http://www.nparks.gov.sg/gardens-parks-and-nature/parks-and-nature-reserves/sungei-buloh-wetland-reserve)  
Email: [nparks\\_sbwr@nparks.gov.sg](mailto:nparks_sbwr@nparks.gov.sg)



### Singapore Zoo



The Singapore Zoo is a so called “open zoo” and a world famous zoological garden with 315 animal species, of which approximately 60 are endangered. You can find all the big cats here: lion, tiger, jaguar, leopard and puma, as well as rare white tigers. If you want to, you can meet orangutans face-to-face. Most of the animals are kept in spacious, landscaped enclosures separated from the visitors by dry or wet moats. Dangerous animals are housed in landscaped glass-fronted enclosures. The park also offers an exciting Night Safari and River Safari, all available as part of discounted entry ticket bundles (along with the Bird Park in Jurong).

Photo: FamVeld/Shutterstock.com  
Address: 80 Mandai Lake Road, Singapore  
Opening hours: Every day 8.30am - 6pm  
Phone: +65 6269 3411  
Internet: [www.zoo.com.sg](http://www.zoo.com.sg)  
Email: [enquiry@wrs.com.sg](mailto:enquiry@wrs.com.sg)

### The Sultan Mosque



The Sultan Mosque with its cupola and minarets gleams light green and is a very beautiful building in the Kampong Glam district. This mosque is the Muslims’ most important building in Singapore (there are 68 mosques in the city in total). Visitors are welcomed to the mosques even if certain parts are still off limits to those who are not of the Muslim faith.

Photo: sunsetman/Shutterstock.com  
Address: 3 Muscat Street, Singapore  
Phone: +65 6293 4405  
Internet: [www.sultanmosque.sg](http://www.sultanmosque.sg)

### Fort Canning Park



This park, in the middle of the colonial city centre, is a great spot for anyone who wants to learn more about Singapore’s military history. Raffle’s last home during his time in the city is also here. An exciting tour of the subterranean command headquarters used by the British during the Second World War is a must when visiting the park.

Photo: Arndale/Shutterstock.com  
Address: 51 Canning Rise, Singapore  
Phone: +65 6471 7361  
Internet: [www.nparks.gov.sg](http://www.nparks.gov.sg)  
Email: [nparks\\_public\\_affairs@nparks.gov.sg](mailto:nparks_public_affairs@nparks.gov.sg)

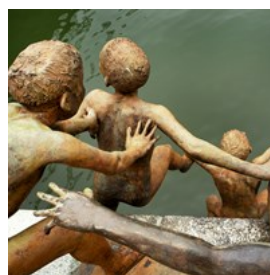
### Singapore Flyer



Standing at 165 meters, the Singapore Flyer is even taller than the London Eye. This Ferris wheel gives you a visual feast of the Marina Bay and the great icons and landmarks of Singapore.

Photo: Maylat/Shutterstock.com  
Address: 30 Raffles Avenue, Singapore  
Opening hours: Mon - Sun 9am - 6pm  
Phone: +65 6333 3311  
Internet: [www.singaporeflyer.com](http://www.singaporeflyer.com)

### First Generation - Bronze Bathers



The series of bronze sculptures spread across Singapore represent the lives of local people before Singapore became the modern metropolis it is today. One instalment of this series are the Bronze Bathers, located at Boat Quay.

Photo: One Percent/Shutterstock.com

Address: Boat Quay, Singapore

More Info: Near Fullerton Hotel

### Holland Village



Often referred to as "Holland V," this happening area is popular with young Singaporeans and expatriates. It offers a bohemian mix of fine restaurants, cool bars and street eateries.

Holland Village also is a hub for antiques, with many outlets dealing arts and handicrafts, especially home ware and furniture.

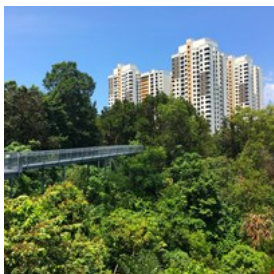
Photo: ZDL/Shutterstock.com

Address: Holland Village, Singapore

Public Transport: Buona Vista

Internet: [www.holland-village-singapore.com](http://www.holland-village-singapore.com)

### The Southern Ridges



A remnant of the luxurious greenery once covering the whole of the island, the Southern Ridges are a series of green spaces strung

along 9 km. Take the elevated Canopy Walk through the rainforest, stop to study all things gardening at Hort Park, then cross the beautifully designed Henderson Waves bridge, and, finally, take the cable car down to Sentosa Island after having admired the panoramic view from Mount Faber.

Photo: Keitma/Shutterstock.com

Address: Henderson Road, Singapore

Phone: +65 1800 471 7300

Internet: [www.nparks.gov.sg](http://www.nparks.gov.sg)

Email: [nparks\\_public\\_affairs@nparks.gov.sg](mailto:nparks_public_affairs@nparks.gov.sg)

### Chinatown



Construction of the Chinese district of Singapore started in 1828 and started out rougher, more cramped and crowded than it is today.

Most of it has been renovated, but the narrow streets and shops remain, as do several large markets. Drop into the Peoples Park Complex shopping centre and Chinatown Complex market where the experience receives added dimensions.

Photo: Stockforlife/Shutterstock.com

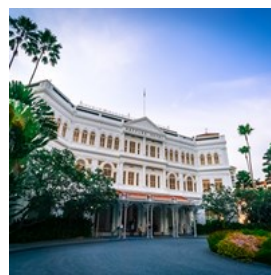
Address: South Bridge Road, Singapore

Public Transport: Chinatown (can also be reached from Outram station)

Internet: [www.chinatown.sg](http://www.chinatown.sg)

More Info: South Street, South Bridge Road, Eu Tong Sen Street and Sago Street

### Raffles Hotel



The Singapore Sling was created here in 1915, by the bartender Ngiam Tong Boon, and is still served at the timeless Long Bar. This is a

wonderful hotel with a great atmosphere, a museum and beautiful gardens. Food is important at the hotel where the cuisine is world-class. For anyone who wants to learn to cook like the great chefs, courses are given at the Raffles Culinary Academy. Just outside the entrance stands, perhaps, the world's most photographed doorman.

Photo: Phillip Maguire/Shutterstock.com

Address: 1 Beach Road, Singapore

Public Transport: City Hall

Phone: +65 6337 1886

Internet: [www.raffleshotel.com](http://www.raffleshotel.com)

## Esplanade



At the mouth of the Singapore River lies the Esplanade, a performance art centre featuring a concert hall, a theatre hall, recital and rehearsal studios, as well as outdoor performance spaces. Casually referred to as "the Durian" because of its resemblance of the famous tropical fruit, the architecturally stunning building boasts some of the world's best acoustics. Even with no one on stage, this is a great spot for lunch or afternoon tea at the neighbouring Esplanade Mall.

Photo: leungchopan/Shutterstock.com  
Address: 1 Esplanade Drive, Singapore  
Public Transport: City Hall  
Phone: +65 6828 8377  
Internet: [www.esplanade.com](http://www.esplanade.com)  
Email: [corporate@esplanade.com](mailto:corporate@esplanade.com)

## DINING



*PSno7/Shutterstock.com*

Singapore is an unparalleled city when it comes to food - a number of major Asian cuisines blend with the best of the Occident. Indian, Malay, Japanese, Chinese and Singapore's own cuisine meets in Singapore and the result is a fantastic choice, both in terms of the number of restaurants and the quality. In Singapore, you can eat cheap and tasty at one of the hawker centres, which used to be open air complexes

selling a variety of foods, and are today slowly being replaced by indoor air-conditioned food courts.

## Makansutra Gluttons Bay



Set smack in the middle of the action with the Marina Bay Sands in plain sight, Gluttons Bay is a row of hawker stalls serving all manner of Singaporean delights straight off the sizzling pans and grills to the lucky ones who manage secure a spot in the outdoor dining area that tends to fill up very quickly, especially at rush hour. A must-try to start with is a classic oyster omelette.

Photo: simonharrycollins/Shutterstock.com  
Address: 8 Raffles Avenue, Singapore  
Opening hours: Opens 5pm  
Phone: +65 6438 4038  
More Info: Esplanade Mall

## Chinatown Complex



The complex's primary attraction is food, and lots of it: apart from the celebrated, Michelin-listed Soya Sauce Chicken Rice Noodle that continuously draws lines, there are dozens of other stalls, including those serving fresh juices and even draft beers.

Photo: 2p2play/Shutterstock.com  
Address: 335 Smith Street, Singapore  
Opening hours: 24/7  
Phone: +65 9677 6336



### A Noodle Story



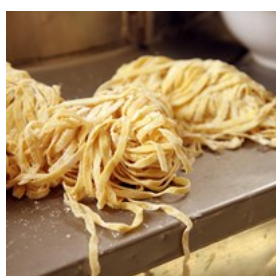
Squeezed up among the stalls of Amoy Street Food Centre (which in itself is worth a browse around) is its indisputable standout: A Noodle Story, one of Singapore's most revered ramen outlets. Springy noodles are served here with HK-style wonton, crispy potato-wrapped prawn, "hot spring" egg and other flavour-concocting additions.

Photo: siam.pukkato/Shutterstock.com

Address: 7 Maxwell Road, Singapore

Phone: +65 9027 6289

### Tai Hwa Pork Noodle



Little does the uninformed visitor know walking by this unassuming little place that not only does it serves some of the best bak chor mee pork noodles in Singapore, but also has a Michelin star to its name. Prepare to wait (and be duly rewarded), while only parting with a few Singaporean dollars.

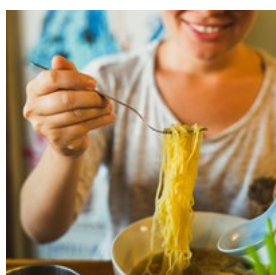
Photo: Lam Tom/Shutterstock.com

Address: 466 Crawford Lane, Singapore

Phone: +65 6292 7477

Internet: [www.taihua.com.sg](http://www.taihua.com.sg)

### Newton Food Centre



This is a major hawker centre in Newton, Singapore. The centre is often promoted as a tourist attraction in itself, and here you can find practically everything when it comes to food: noodles, satay, fried oysters and lobsters.

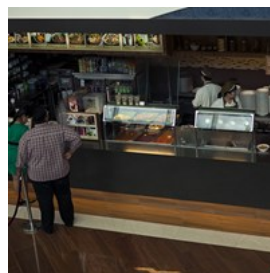
Photo: Dmitry Galaganov/Shutterstock.com

Address: Clemenceau Ave North, Newton Circus, Singapore

Public Transport: Newton

More Info: Along Clemenceau Ave North, Newton Circus

### Timbre+



A hawker centre for the young, hip crowd, Timbre+ offers an impressive selection of food stalls serving a selection of modernised local classics and introducing quite a few new, less familiar flavor combinations. Live music plays Monday through Saturday nights. Stop by the Bottle Shop for exclusive beers.

Photo: Vanzyst/Shutterstock.com

Address: 73A Ayer Rajah Crescent, Singapore

Phone: +65 6252 2545

Internet: [www.timbreplus.sg](http://www.timbreplus.sg)

More Info: JTC LaunchPad @ one-north

### Odette



With its two Michelin stars, Odette remains a highly sought-after experience, with savvy travellers making reservations up to one month in advance. The space is stunning visually (with whites and pastels defining the colour scheme) - a small appetiser of sorts for the spectacular culinary creations to come.

Photo: Pietruszka/Shutterstock.com

Address: 1 Saint Andrew's Road, National Gallery, Singapore

Phone: +65 6385 0498

Internet: [www.odetterestaurant.com](http://www.odetterestaurant.com)



### Sun with Moon



Serving modern Japanese food in a comfortable setting, this restaurant has a different menu depending on the time of day you choose to visit.

Some of the dishes might be on the pricy side, but the quality and presentation are top notch. When here, try the kamameshi ("kettle rice"), flavoured rice steamed with various ingredients in an iron pot called a kama.

Photo: norikko/Shutterstock.com

Address: 501 Orchard Road, Singapore

Public Transport: Orchard

Opening hours: Every day 11am - 9.30pm

Phone: +65 6733 6636

Internet: [www.sunwithmoon.com.sg](http://www.sunwithmoon.com.sg)

Email: [info@sfb.com.sg](mailto:info@sfb.com.sg)

More Info: Wheelock Place

### Shinji by Kanesaka



For top notch sushi and Japanese cuisine, head to one of the two Shinji by Kanesaka restaurants. The flagship restaurant is located in the legendary

Carlton Hotel and holds the same standard as the luxury hotel. Prepare for above average prices; it is recommended to book ahead.

Photo: Marcelo\_Krelling/Shutterstock.com

Address: 76 Bras Basah Road, Singapore

Phone: +65 6338 6131

Internet: [www.shinjibykanesaka.com](http://www.shinjibykanesaka.com)

Email: [reservations@shinjibykanesaka.com](mailto:reservations@shinjibykanesaka.com)

More Info: Via Seah Street lobby

### Blu Kouzina



At Blu Kouzina, a dining room decorated with the traditional blue and white colours and waiters serving dishes such as mousaka, souvlaki and grilled feta cheese give you the perfect atmosphere of Greece. The owner will happily to recommend his favourites and answer all your questions.

Photo: Radu Dumitrescu/Shutterstock.com

Address: 10 Dempsey Road, Singapore

Phone: +65 6875 0872

Internet: [www.blukouzina.com](http://www.blukouzina.com)

Email: [blukouzina@singnet.com.sg](mailto:blukouzina@singnet.com.sg)

More Info: Dempsey Hill

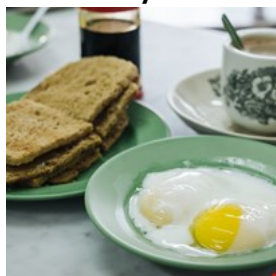
### CAFES



N8Allen/Shutterstock.com

Kopitiam - meaning "coffee shop" in Hokkien - are the local variety of neighbourhood cafes, and can be found all over the island. They're not just good for breakfast, but will serve a nice light meal any time of the day. Outlets offering breakfast as well as other savoury delights are the historic Killiney Kopitiam and the relatively new Toastbox franchise.

### Ya Kun Kaya Toast



Multiple locations all around Singapore make it easy to locate a Ya Kun Kaya Toast, and it really is worth doing so in the morning, for a

quintessentially Singaporean start to the day of coconut jam toast (kaya) and a strong cup of coffee (kopi).

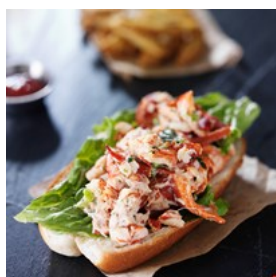
Photo: Minto.ong/Shutterstock.com

Address: Far East Square, 18 China Street, Singapore

Phone: +65 6438 3638

Internet: [www.yakun.com](http://www.yakun.com)

### The LoKal



The Australian head chef Darren Farr oversees The LoKal's exciting menu that draws on Aussie classics while making extensive use of

quintessentially local ingredients, as well as imported rarities like lobster. The "Pimp Your Breakfast" option allows you to have the day's most important meal your way (try the smoked salmon for choice of protein), and new specials are listed daily.

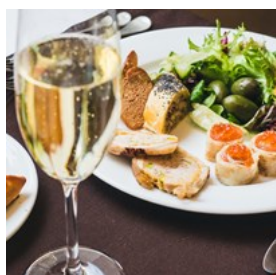
Photo: Joshua Resnick/Shutterstock.com

Address: 136 Neil Road, Singapore

Phone: +65 6423 9918

Internet: [www.thelokalsingapore.com](http://www.thelokalsingapore.com)

### Symmetry



Brunch seats at Symmetry are nearly impossible to have without prior reservation, but you can still give it a shot without one by arriving at least an hour ahead of time. It's

somewhat of a hipster classic by now, complete with vintage decor pieces and indie music playing in the background.

Photo: VDVVD/Shutterstock.com

Address: 9 Jalan Kubor, Singapore

Phone: +65 6291 9901

Internet: [www.symmetry.com.sg](http://www.symmetry.com.sg)

### Common Man Coffee Roasters



There is plenty to praise about Common Man Coffee Roasters, but if we had to zoom in on just one thing it would be the all-day breakfast/brunch

menu, featuring sweet and savoury international fusion delights. Reservations are available for groups of 5 and up (outside of weekends).

Photo: Waraporn Boonman/Shutterstock.com

Address: 22 Martin Road, Singapore

Phone: +65 6836 4695

Internet: [www.commonmancoffeeroasters.com/pages/cafe](http://www.commonmancoffeeroasters.com/pages/cafe)

### Killiney Kopitiam



Those on a hunt for authenticity must commit themselves to at least one quintessentially Singaporean breakfast of kaya jam and toast,

soft-boiled eggs, and a coffee. There are few better places to have it than the now century-old Killiney Kopitiam (multiple locations across the city).

Photo: Taddown Kamyodjai/Shutterstock.com

Address: 67 Killiney Road, Singapore

Phone: +65 6734 3910

Internet: [www.killiney-kopitiam.com](http://www.killiney-kopitiam.com)



### Ah Chew Desserts



You'll barely run into a foreigner at this Singaporean dessert joint - if this prospect appeals to rather than repels you, head straight for a rainbow bread ice cream sandwich (roti), glass jelly drink or sago pudding (durian flavour if you're feeling especially adventurous).

Photo: 1981 Rustic Studio kan/Shutterstock.com  
Address: 1 Liang Seah Street, Liang Seah Place, Singapore  
Phone: +65 6339 8198  
Internet: [www.ahchewdesserts.com](http://www.ahchewdesserts.com)

### Wild Honey



Wild Honey's two central Singapore locations serve all-day breakfasts from around the world, from Scandinavian to Caribbean, via Australia and most of Europe. It's a tad pricey, but oh-so worth it, for the food, ambience and service.

Photo: Kim Wutimet/Shutterstock.com  
Address: 333A Orchard Rd, Mandarin Gallery, Singapore  
Phone: +65 6235 3900  
Internet: [www.wildhoney.com.sg](http://www.wildhoney.com.sg)

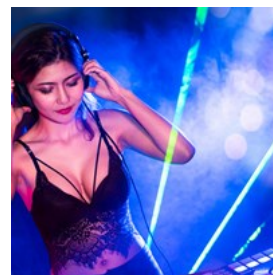
### BARS & NIGHTLIFE



Arina P Habich/Shutterstock.com

Those who want to dance and enjoy themselves all night long have plenty of options in Singapore. Often, the visitor who is looking for something to drink in Singapore, is tipped off to try a Singapore Sling at Raffles, but there are lots of other alternatives.

### Zouk



Zouk is one of Asia's finest clubs, occupying three old warehouses by the river. The club has Moorish and Aboriginal-influenced interior, a large dance floor, bars and dining options.

Photo: Pormezz/Shutterstock.com  
Address: 3C River Valley Road, Singapore  
Phone: +65 6738 2988  
Internet: [www.zoukclub.com.sg](http://www.zoukclub.com.sg)  
More Info: Clarke Quay

### The Long Bar



The interior of The Long Bar is inspired by Malayan plantations of the 1920s. The bar is located at Raffles Hotel, and is a relaxing place to start off your evening with a drink and soft tunes

from the band. The recommended order to be made here is the Singapore Sling, a cocktail one simply must try when in town.

Photo: katushOK/Shutterstock.com

Address: 1 Beach Road, Singapore

Phone: +65 6412 1230

Internet: [www.raffles.com](http://www.raffles.com)

More Info: Raffles Hotel reopens after reconstruction in late 2018

### Paulaner Bräuhaus Singapore



Paulaner Bräuhaus is a German style restaurant and pub in Singapore that will give you a true Bavarian experience in the heart of Asia. They have their own microbrewery, which is one of Singaporean few.

Photo: G-stockstudio/Shutterstock.com

Address: 9 Raffles Boulevard, Singapore

Phone: +65 6883 2572

Internet: [www.paulaner-brauhaus.com/singapore](http://www.paulaner-brauhaus.com/singapore)

Email: [info@paulaner-brauhaus-singapore.com](mailto:info@paulaner-brauhaus-singapore.com)

### Orgo



Orgo lays special emphasis on drink and food ingredients, priding itself especially on using only the freshest, finest ingredients. Orgo's team is led by a professional mixologist and adviser to Bacardi Japa Tomoyuki Kitazoe.

Photo: AnnaMorozova/Shutterstock.com

Address: 8 Raffles Avenue, Singapore

Phone: +65 6336 9366

Internet: [www.orgo.sg](http://www.orgo.sg)

Email: [info@orgo.sg](mailto:info@orgo.sg)

### Gallery & Bar at 1-Altitude



One of the most sought-after evening venues in Singapore, the 1-Altitude Bar boasts a 360 degree bird's-eye view over the city. Get here before sundown to make the most of your evening in the bar's fashionable interior, and enjoy a masterfully crafted drink to music played by a live band or resident DJs.

Photo: Jacob Lund/Shutterstock.com

Address: 1 Raffles Place, Singapore

Opening hours: Sun - Tue 6pm - 2am, Thurs 6pm - 3am, Fri - Sat, Wed 6pm - 4am

Phone: +65 6438 0410

Internet: [www.1-altitude.com](http://www.1-altitude.com)

Email: [info@1-altitude.com](mailto:info@1-altitude.com)

### Atlas Bar



Located on the ground floor of Singapore's Parkview Square building and sporting art decó-inspired interiors, the Atlas Bar is famous for its world-class gin collection. Both the cocktails and dishes pay homage to the 'roaring twenties': you can couple your martini or Negroni with one of their specials, including lobster rolls and smoked beef short ribs.

Photo: Subodh Agnihotri/Shutterstock.com

Address: Parkview Square, 600 North Bridge Road, Singapore

Opening hours: Mon-Thu 10am-1am, Fri 10am-2am, Sat 12pm-2am

Phone: +65 6396 4466

Internet: [www.atlasbar.sg](http://www.atlasbar.sg)

Email: [info@atlasbar.sg](mailto:info@atlasbar.sg)



### Comedy Masala



Every Tuesday, Singapore's biggest and most popular stand-up comedy show opens its doors at Hero's bar. The show was first founded by

Pakistani comedian Umar Rana and hosts international, local and regional comedians. So if you are up for a night of laughter alongside a few drinks, head right for 69 Circular Road in Singapore.

Photo: Fer Gregory/Shutterstock.com  
Address: 69 Circular Road, Singapore  
Opening hours: Tuesday at 8:00pm.  
Phone: +65 8525 7414  
Internet: [www.comedymasala.com](http://www.comedymasala.com)  
Email: [umar@comedymasala.com](mailto:umar@comedymasala.com)

## SHOPPING



*Syda Productions/Shutterstock.com*

Locals joke that shopping is a national sport in Singapore, and there really is an enormous range in all price brackets to choose from. The artery of Singapore's shopping life is naturally Orchard Road, where the largest and most well-known department stores are lined up. Moreover, there are lots of shopping centres and markets around the city.

### Suntec City



Eat, stroll and be impressed by this monumental indoor complex full of shopping arcades, cinemas, restaurants, conference

centres and works of art - including a gigantic fountain. Moreover, it is a good place to cool down when the tropical heat is too oppressive outside.

Photo: Kamil Macniak/Shutterstock.com  
Address: 3 Temasek Boulevard, Singapore  
Phone: +65 6266 1502  
Internet: [www.sunteccity.com.sg](http://www.sunteccity.com.sg)  
Email: [sales@suntecsingapore.com](mailto:sales@suntecsingapore.com)

### Orchard Road



Orchard Road is the main shopping street in Singapore. There are department stores and shopping centres at an incomparable range

which beats most. Anyone who wants, could easily add a few days to their trip just to walk up and down Orchard Road in search for bargains.

Photo: Christian Mueller/Shutterstock.com  
Address: Orchard Road, Singapore  
Phone: +65 6733 1700  
Internet: [www.orchardroad.org](http://www.orchardroad.org)  
Email: [info@orchardroad.org](mailto:info@orchardroad.org)  
More Info: Somerset and Dhoby Ghaut

### Riverside



At Clarke Quay, there are a number of newly renovated harbour warehouses accommodating some 150 shops. They sell antiques,

clothes, souvenirs and other things, there is also a flea market on Sundays. Immediately adjacent is Liang Court, where there are a number of Japanese designer shops. Riverside Point is an exclusive shopping centre in the area.

Photo: leungchopan/Shutterstock.com  
Address: Clarke Quay, Singapore

### The Centrepoint



The Centrepoint is the largest and most popular shopping centre in Singapore. It houses boutiques specialising in, among other things, music, clothing, optics, electronics, furniture, and books - everything anyone might need. There are also many restaurants and fast-food outlets.

Photo: bikeriderlondon/Shutterstock.com  
Address: 176 Orchard Road, Singapore  
Opening hours: Every day 10am - 10pm  
Phone: +65 6737 9000  
Internet: [www.thecentrepoint.com.sg](http://www.thecentrepoint.com.sg)  
Email: [promo@fraserscentrepoint.com](mailto:promo@fraserscentrepoint.com)  
More Info: Somerset

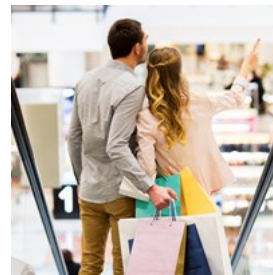
### The Heeren



The Heeren is primarily known for housing the upmarket Robinsons department store. The assortment of high-class items is ample in both the clothing and beauty departments, and several dining options are available as well.

Photo: EpicStockMedia/Shutterstock.com  
Address: 260 Orchard Road, Singapore  
Phone: +65 6738 4388  
Internet: [www.robinsons.com.sg](http://www.robinsons.com.sg)  
Email: [OfficeEnquiries@heeren.com.sg](mailto:OfficeEnquiries@heeren.com.sg)

### Ngee Ann City



It takes more than one day to properly get around this massive complex. The main attraction is Takashimaya, the large Japanese chain store. Apart from that, you'll find more than 100 specialised shops for sports, stationery, electronics, jewels and designer clothes. Brands like Boss, Zara and Mango are found here, as well as south-east Asia's largest bookstore, Konokuniya.

Photo: Syda Productions/Shutterstock.com  
Address: 391 Orchard Road, Singapore  
Opening hours: Every day 10am - 9.30pm  
Phone: +65 6506 0460  
Internet: [www.ngeeanncity.com.sg](http://www.ngeeanncity.com.sg)  
More Info: Orchard

### Plaza Singapura



This is Singapore's first shopping mall with many shops, built in 1974 and a favourite with the locals. A one-stop-shop for lifestyle items with brands like Carrefour, John Little, Marks & Spencer and Best Denki.

Photo: Pressmaster/Shutterstock.com  
Address: 68 Orchard Road, Singapore  
Public Transport: Dhoby Ghaut  
Opening hours: Every day 10am - 10pm  
Phone: +65 6332 9298  
Internet: [www.plazasingapura.com.sg](http://www.plazasingapura.com.sg)  
Email: [ask-us@capitalandmallasia.com](mailto:ask-us@capitalandmallasia.com)



### Chinatown



Chinatown is located just next to the financial district's skyscrapers. It is colorful, crowded and with typical aromas of the Chinese district (spices, herbs, medicines, fruit). In Tanjong Pagar one will find traditional tea shops, masks and other artwork. In the narrow Smith Street, Trengganu Street, Temple Street and Pagoda Street, it's easy to find all kinds of bargains. Do not forget Sago Street with its China stores. Peoples Park Complex shopping centre is a must, especially for the crowd. Do not miss OG People's Park, which has become popular with its fashion boutiques, jewellery and cosmetics.

Photo: HealthyBacon/Pixabay.com  
Address: Chinatown, Singapore  
Phone: +65 6221-5115  
Internet: [www.chinatown.sg](http://www.chinatown.sg)  
More Info: Outram or Chinatown

### Marina Square



Bigger than seven football fields combined, Marina Square is one of the largest shopping malls in Singapore. Located at Marina Bay adjacent to Suntec City, the recently revamped mall is divided into eight uniquely thematic zones with over 250 stores on five levels. With its recently introduced Tourist Privilege program this is the mall where you can happily "shop until you drop!"

Photo: Elwynn/Shutterstock.com  
Address: 6 Raffles Boulevard, Singapore  
Opening hours: Every day 10am - 9.30pm  
Phone: +65 6339 8787  
Internet: [www.marinasquare.com.sg](http://www.marinasquare.com.sg)

### Sim Lim Square



Located near Bugis Street and regarded as the most established IT-mall in Singapore, Sim Lim Square is a six-storey complex guaranteed to satisfy your need for all things electronics. The first storey is devoted to consumer electronics and on the levels above, you will find IT-related products. Haggling is practised on all floors.

Photo: Dusan Petkovic/Shutterstock.com  
Address: 1 Rochor Canal Road, Singapore  
Public Transport: Bugis  
Phone: +65 6338 3859  
Internet: [www.simlimsquare.com.sg](http://www.simlimsquare.com.sg)

### Far East Plaza



What Far East Plaza lacks in glamour, it certainly makes up for in diversity and bargaining fun. Located on Scotts Road just off Orchard, this mall, popular among locals as well as expatriates, boasts more than 800 stores and there is most certainly something for everyone.

Photo: wutzkohphoto/Shutterstock.com  
Address: 14 Scotts Road, Singapore  
Public Transport: Orchard  
Phone: +65 67346837  
Internet: [www.fareast-plaza.com](http://www.fareast-plaza.com)  
Email: [enquiry@fareast-plaza.com](mailto:enquiry@fareast-plaza.com)

## TOURIST INFORMATION



JohnsonGoh/Pixabay.com

### Airport



Like nearly everything else in the city, the Singapore Changi Airport is a miracle of efficiency. All services are provided locally and it is

recognised as one of the best airports in the world. Both its terminals are linked by a skytrain which operates both at the transit and public areas and Terminal 3. Obviously, the shopping is high class here as well.

Transportation to and from the city is excellent as the end station of one of the routes on the MRT tube is at the airport. The tube is also the cheapest and fastest way to the city. A taxi to the city takes around 30 minutes. Budget transport to the city and other parts of the island can also be by bus or by train. Terminals are located at the basement of airport terminals 1 and 2. Prepare the exact fare for buses as no change will be given. If you choose to go by train, you would have to switch trains at EW4 - Tanah Merah MRT Station to get downtown.

A Ground Transport Centre (GTC) is available at the Arrival Hall of both Terminals.

For more details on time tables and fares, pick up a copy of the MRT brochure at the Changi Airport MRT Station.

Photo: Juan Garces

Address: Airport Boulevard, Singapore

Phone: +65 6595 6868

Internet: [www.changiairport.com](http://www.changiairport.com)

### Passport / Visa



Citizens of the overwhelming majority of world countries do not require a visa for tourism stays of 30 to 90 days.

Nationals of some countries do require a visa, which can often be easily obtained online and received in printable format. In order to be granted entry into Singapore, all visitors must produce a passport valid for 6 months from the date of departure, proof of sufficient funds for the duration of their stay, a return or onward ticket, visa for the following destination (if applicable), and a yellow fever vaccination certificate (please consult the up-to-date list of countries whose national require vaccination at your planned travel dates).

Photo: TukTuk Design/Shutterstock.com

### Best Time to Visit



Singapore meets visitors with warm temperatures and nice weather nearly all year round, but the likelihood of rain is likewise present at all times. Be aware that indoor temperatures in malls and the subway are often significantly lower than outdoors, so those especially sensitive



to such changes might want to carry a light jacket or sweatshirt. November through June are most popular with visitors, and with Chinese New Year also falling on that period, it might be reasonable to arrange for accommodation well in advance. Various festivals are held throughout the year.

Photo: VectorA/Shutterstock.com

### Public Transport



The MRT (Mass Rapid Transit) tube with its driver-free trains is the artery of Singapore's local transport. The network comprises three main lines which link up the city. The train runs from early in the morning until midnight and it is clean, fast and very safe. Tickets and different types of reduced rate tickets can be bought at all stations.

Singapore also has an extensive network of buses that cover local transport in areas to which MRT does not go. Buses are cheap and proportionately comfortable. There are buses both with and without air conditioning.

Photo: Pierre-Luc Auclair  
Internet: [www.smrt.com.sg](http://www.smrt.com.sg)

### Taxi



Flexible and easy - there are a great many taxis in Singapore which all use taximeters. Taxis are cheap even if there is a surcharge at night and for driving through certain areas during rush-hour traffic. There are a few large taxi companies of which Comfort is the largest.

City Cab  
+65 6552 2222

Comfort  
+65 6552 1111

SMRT  
+65 6555 8888

Transcab  
+65 6555 3333

Premier Taxis  
+65 6363 6888

SMART  
+65 6485 7777

Photo: Taxi  
Internet: [www.taxisingapore.com](http://www.taxisingapore.com)

### Post Office



Singapore Post has 1,300 offices spread across the island. These offer all postal services and telecommunications. General opening hours are Monday to Friday 8.30-17.00 and Saturdays 8.30-13.00.

Singapore Post (main office):

Photo: Andy Fuchs  
Address: 10 Eunos Road 8, Singapore  
Phone: +65 6741 8857

## Pharmacy



There are pharmacies in most supermarkets, department stores, hotels and shopping centres and they are usually open from 9.00-18.00. Many

hotels have their own 24-hour doctors, while other doctors are listed under Medical Practitioners in the Yellow Pages.

Photo: Gemma Garner

## Telephone



Country code: +65

Photo: Jardson Almeida

## Electricity



220 - 240 volts, AC 50

Photo: Stirling Tschan

## Population

5.7 million

## Currency

Singapore dollar (SGD)  
S\$1 ~ US\$0,73

## Opening hours

Most shops in the city are open from 10.00 until 20.00 or 21.00 every day of the week.

## Newspapers

Straits Times  
The New Paper  
The Business Times

## Emergency numbers

Police: 999

Emergency/Ambulance/Fire Brigade: 995

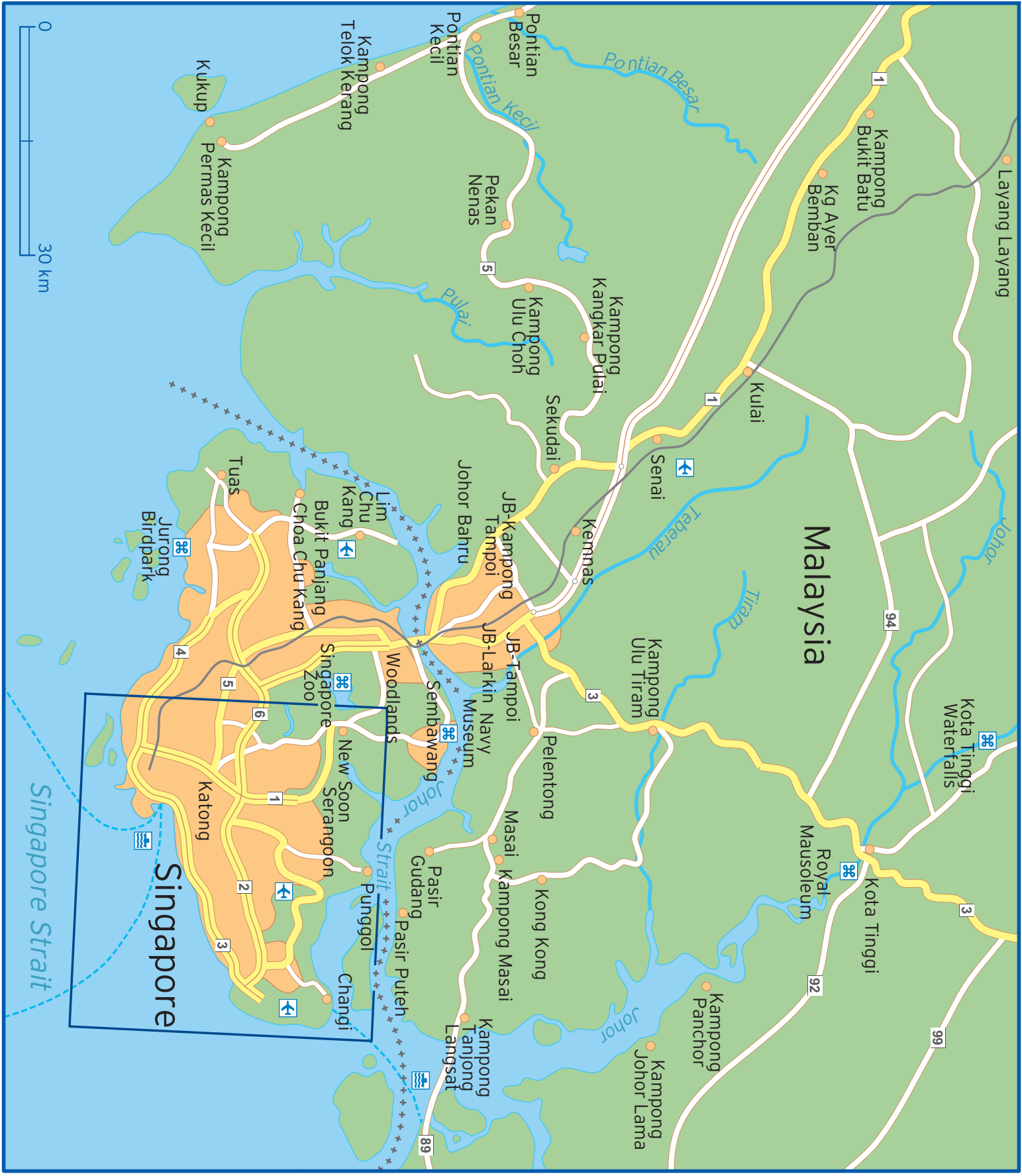
## Tourist information

Singapore Visitors Centre,  
216 Orchard Road (Next to orchardgateway@emerald)  
Daily: 8.30-21.30

Chinatown Visitor Centre  
2 Banda Street (Behind Buddha Tooth Relic Temple and Museum)  
Daily: 9.00 - 21.00

## Tourist Hotline

Toll-free in Singapore: 1800 736 2000  
From Overseas: +65 6736 2000



# Malaysia

# Singapore

Singapore Strait

0 30 km





Pulau Ubin

Serangoon Harbour

Changi

Johore Battery

Pasir Ris

Singapore Changi Airport

Tampines

Bedok Reservoir

Singapore International Airport

Bedok

Katong

East Coast Park

Geylang

Straits of Singapore

South China Sea

Yio Chu Kang

Punggol

Ang Mo Kio

Hougang

Serangoon

Thomson Village

Bishan

Siong Lim Sian Si Temple

Toa Payoh

Botanic Gardens

Queenstown

China Town

Singapore

Downtown

Tiong Bahru

Kappel Harbour

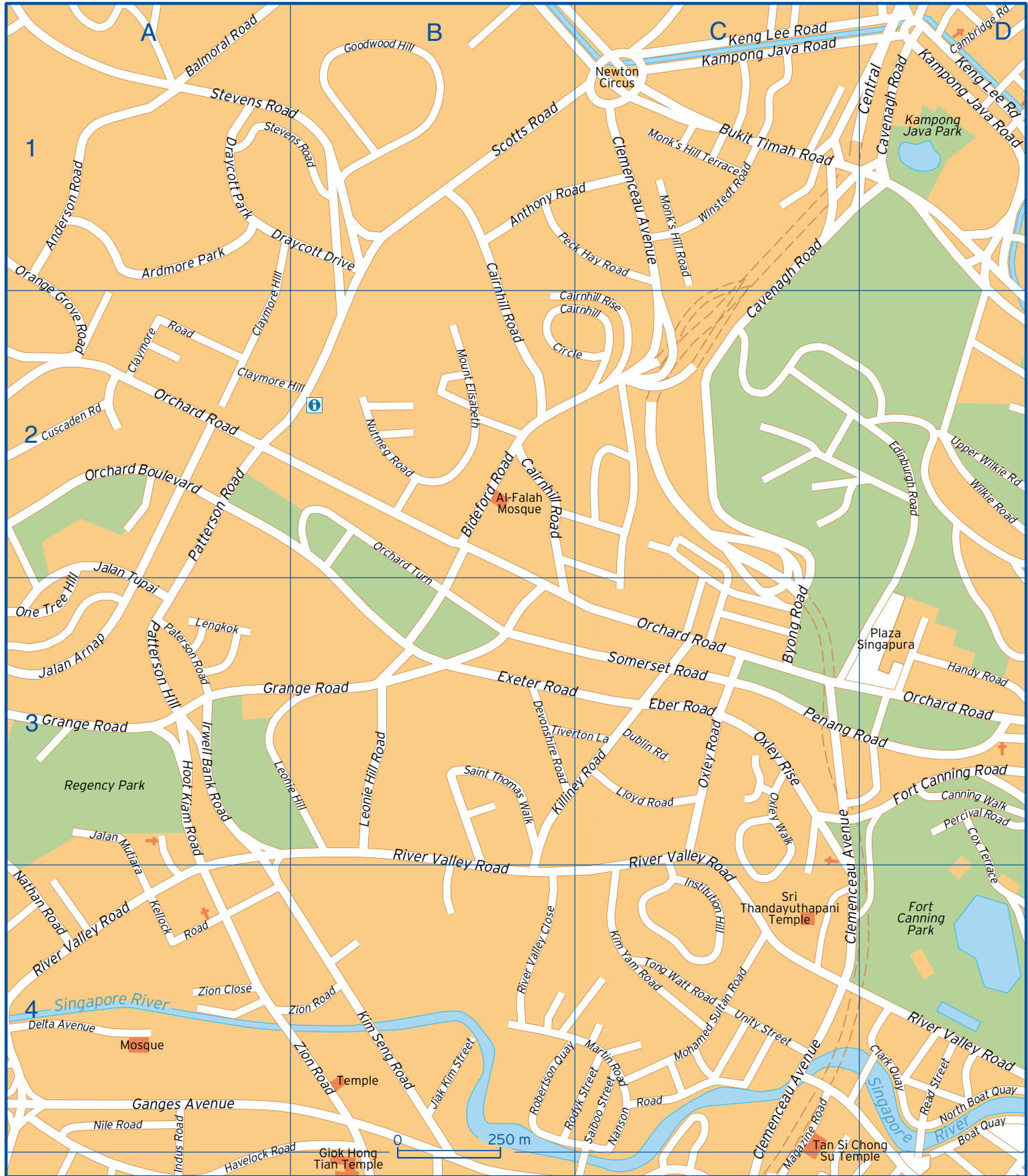
Underwater World

Butterfly Park

Maritime Museum

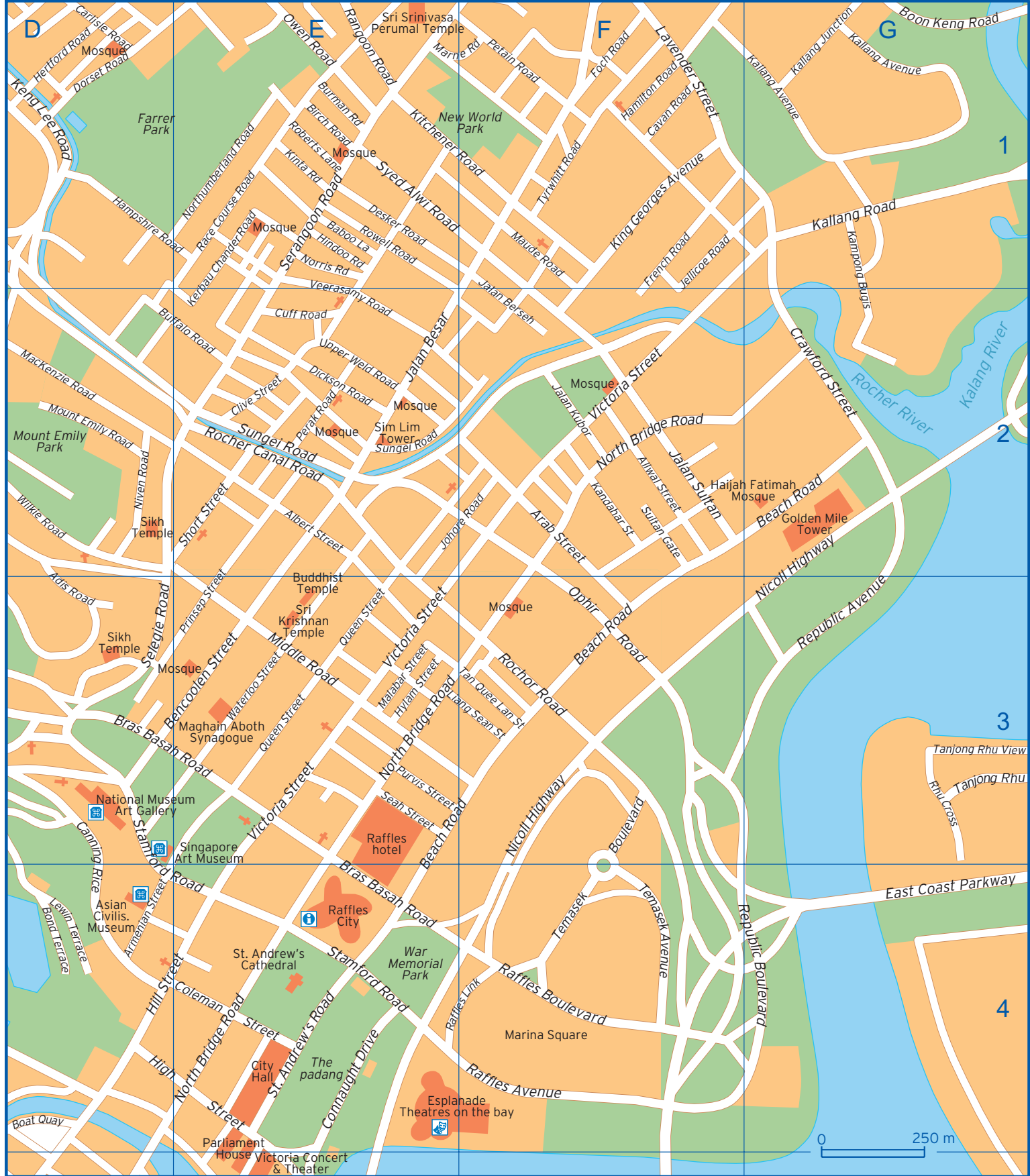
Sentosa

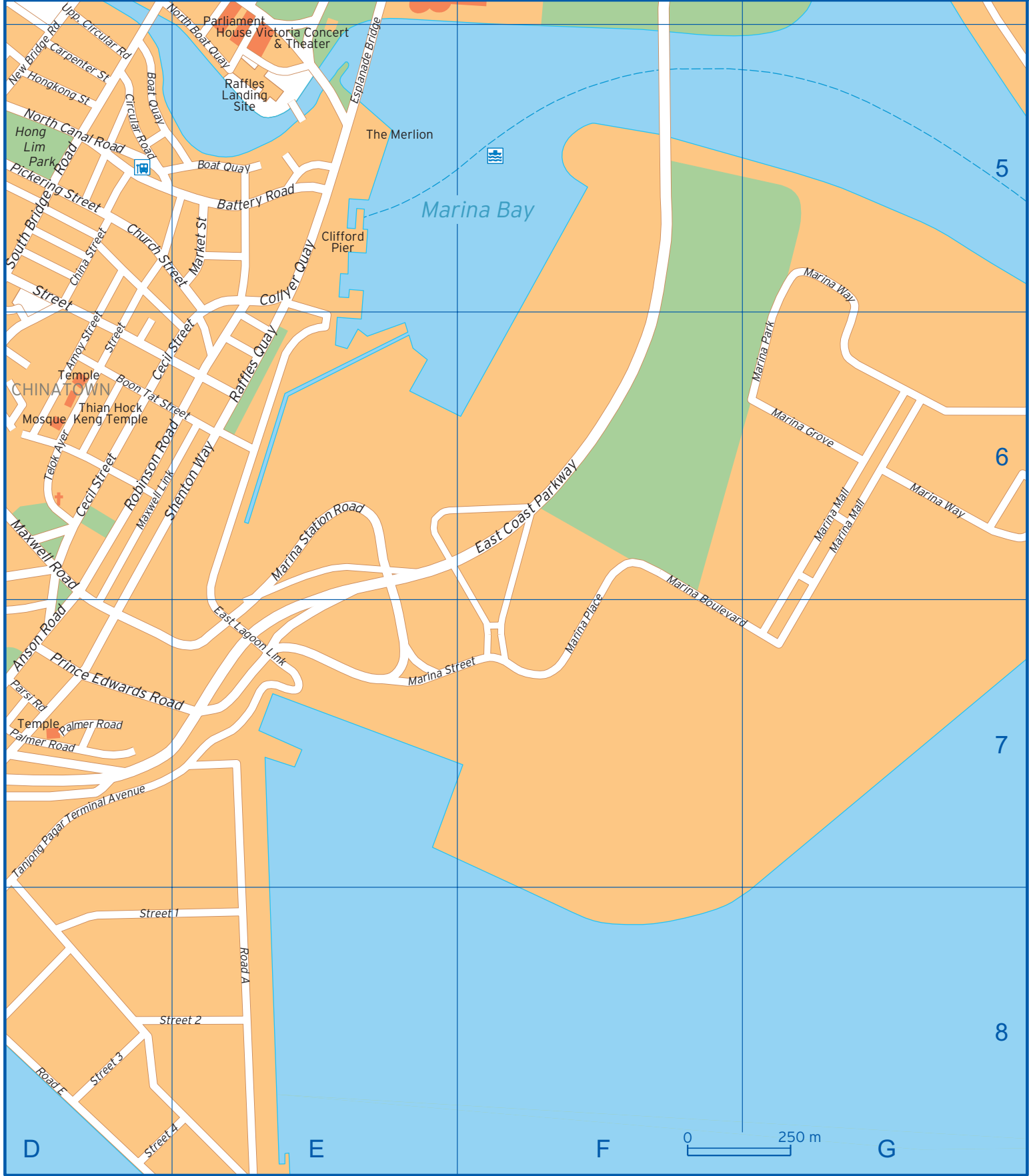
0 3 km











|                       |          |                       |                |                        |          |
|-----------------------|----------|-----------------------|----------------|------------------------|----------|
| Adis Road             | D2 D3    | Central Expressway    | A6 B6 C5 C7    | Hertford Road          | D1       |
| Albert Street         | E2       | China Street          | D5             | High Street            | D4       |
| Allwal Street         | F2       | Church Street         | D5 E5          | Hill Street            | D4 E4    |
| Amoy Street           | D6       | Circular Road         | D5             | Hindoo Road            | E1       |
| Anderson Road         | A1       | Clark Quay            | D4             | Hoe Chiang Road        | C7       |
| Ann Siang Club Street | D6       | Claymore Hill         | A1 A2 B2       | Hongkong Street        | D5       |
| Anson Road            | D7       | Claymore Road         | A2             | Hoot Kiam Road         | A3       |
| Anthony Road          | B1 C1    | Clemenceau Avenue     | C1 C3 C4 C5    | Hospital Drive         | B6       |
| Arab Street           | F2       | Clive Street          | E2             | Hylam Street           | E3       |
| Armenian Street       | D4       | Coleman Street        | D4 E4          | Indus Road             | A4 A5    |
| Asia Gardens          | C6 C7    | College Road          | B6             | Institution Hill       | C4       |
| Ayer-Rajah            | A7       | Collyer Quay          | E5             | Irwell Bank Road       | A3       |
| Baboo Lane            | E1       | Connaught Drive       | E4             | Jalan                  | A6       |
| Balmoral Road         | A1       | Cox Terrace           | D3 D4          | Jalan Arnap            | A3       |
| Battery Road          | E5       | Craig Road            | C6             | Jalan Berseh           | F1 F2    |
| Beach Road            | E4 F3 G2 | Crawford Street       | G2             | Jalan Besar            | E2       |
| Bencoolen Street      | D3 E3    | Cross Street          | D5             | Jalan Kubor            | F2       |
| Beo Cres              | A5       | Cuff Road             | E2             | Jalan Membina          | A5 A6    |
| Bernam Street         | D7       | Cuscaden Road         | A2             | Jalan Minyak           | C5       |
| Bideford Road         | B2       | Delta Avenue          | A4             | Jalan Mutiara          | A3 A4    |
| Birch Road            | E1       | Desker Road           | E1             | Jalan Sultan           | F2       |
| Boat Quay             | D4 D5 E5 | Devonshire Road       | B3             | Jalan Tupai            | A2 A3    |
| Bond Terrace          | D4       | Dickson Road          | E2             | Jellicoe Road          | F1 F2    |
| Boon Keng Road        | G1       | Dorset Road           | D1             | Jiak Kim Street        | B4       |
| Boon Tat Street       | D6 E6    | Draycott Drive        | A1 B1          | Johore Road            | E2 F2    |
| Boon Tiong Road       | A5       | Draycott Park         | A1             | Kallang Avenue         | G1       |
| Bras Basah Road       | D3 E3 E4 | Dublin Road           | C3             | Kallang Junction       | G1       |
| Buffalo Road          | D2 E2    | Duxton Road           | C6 D6          | Kallang Road           | G1       |
| Bukit Ho Swee         | A5 B5    | East Coast Parkway    | F6 G4          | Kampong Bahru Road     | A7 A8    |
| Bukit Merah           | A6 B6    | East Lagoon Link      | E7             | Kampong Bugis          | G1 G2    |
| Bukit Purmei Road     | A7       | Eber Road             | C3             | Kampong Java Road      | C1 D1    |
| Bukit Teresa Road     | A7       | Edinburgh Road        | D2             | Kandahar Street        | F2       |
| Bukit Timah Road      | C1       | Eng Hoon Street       | B5             | Kee Seng Street        | C7       |
| Burman Road           | E1       | Eng Watt Street       | B5             | Kellock Road           | A4       |
| Byong Road            | C3       | Enggor Street         | D7             | Keng Lee Road          | C1 D1    |
| Cairnhill Circle      | B2 C2    | Esplanade Bridge      | E4 E5          | Keong Saik             | C6       |
| Cairnhill Rise        | B2 C2    | Everton Park          | C6             | Keppel Terminal Avenue | A8 C8 D8 |
| Cairnhill Road        | B1 B2    | Exeter Road           | B3 C3          | Kerbau Chander Road    | E1 E2    |
| Cambridge Road        | D1       | First Hospital Avenue | C6             | Killiney Road          | B3 C3    |
| Canning Rice          | D3 D4    | Foch Road             | F1             | Kim Pong Road          | A5       |
| Canning Walk          | D3       | Fort Canning Road     | D3             | Kim Seng Road          | B4       |
| Cantonment Link       | C7       | French Road           | F1             | Kim Tian Road          | A6       |
| Cantonment Road       | C6       | Ganges Avenue         | A4             | Kim Yam Road           | C4       |
| Carlisle Road         | D1       | Goodwood Hill         | B1             | King Georges Avenue    | F1       |
| Carpenter Street      | D5       | Grange Road           | A3 B3          | Kinta Road             | E1       |
| Cavan Road            | F1       | Hamilton Road         | F1             | Kitchener Road         | E1 F1    |
| Cavenagh Road         | C1 C2 D1 | Hampshire Road        | D1 E1          | Kreta Ayer Road        | C6       |
| Cecil Street          | D6 E6    | Handy Road            | D3             | Lavender Street        | F1       |
| Central               | D1       | Havelock Road         | A5 B4 B5 C5 D5 | Lengkok                | A3       |



|                     |          |                      |                |                               |       |
|---------------------|----------|----------------------|----------------|-------------------------------|-------|
| Leonie Hill         | A3 B3    | Orchard Boulevard    | A2             | Robertson Quay                | B4    |
| Leonie Hill Road    | B3       | Orchard Road         | A2 C3 D3       | Robinson Road                 | D6 E6 |
| Lewin Terrace       | D4       | Orchard Turn         | B2 B3          | Rocher Canal Road             | E2    |
| Liang Sean Street   | E3 F3    | Outram Park          | C5 C6          | Rochor Road                   | F3    |
| Lim Siak Street     | A5 B5    | Outram Road          | B5 B6 C6       | Rodyk Street                  | B4 C4 |
| Lim Teck Kim Road   | C7 D7    | Owen Road            | E1             | Rowell Road                   | E1    |
| Lloyd Road          | C3       | Oxley Rise           | C3             | Saiboo Street                 | C4    |
| MacAlister Road     | B6       | Oxley Road           | C3             | Saint Thomas Walk             | B3    |
| MacKenzie Road      | D2       | Oxley Walk           | C3             | Scotts Road                   | B1    |
| Magazine Road       | C4 C5    | Pagoda Street        | D5             | Seah Street                   | E3    |
| Malabar Street      | E3       | Palmer Road          | D7             | Second Hospital Avenue        | B6 C6 |
| Marina Boulevard    | F6 G7    | Park Cres            | C5             | Selegie Road                  | D3    |
| Marina Grove        | G6       | Parsi Road           | D7             | Seng Poh Lane                 | B5    |
| Marina Mall         | G6       | Paterson Hill        | A3             | Seng Poh Road                 | A5 B5 |
| Marina Park         | G6       | Patterson Road       | A2 A3          | Serangoon Road                | E1    |
| Marina Place        | F6 F7    | Pearl's Hill Terrace | C5             | Shenton Way                   | D6 E6 |
| Marina Station Road | E6       | Peck Hay Road        | B1 C1          | Short Street                  | E2    |
| Marina Street       | E7 F7    | Peck Seah Street     | D6             | Smith Street                  | C5 D6 |
| Marina Way          | G5 G6    | Penang Road          | C3 D3          | Somerset Road                 | C3    |
| Market Street       | E5       | Perak Road           | E2             | South Bridge Road             | D5    |
| Marne Road          | E1 F1    | Percival Road        | D3             | Spooner Road                  | A7 B7 |
| Martin Road         | C4       | Petain Road          | F1             | Spottiswoode Park Road        | B7 C7 |
| Maude Road          | F1       | Pickering Street     | D5             | St. Andrew's Road             | E4    |
| Maxwell Link        | D6 E6    | Prince Edwards Road  | D7 E7          | Stamford Road                 | D3 E4 |
| Maxwell Road        | D6       | Prinsep Street       | E2 E3          | Stevens Road                  | A1 B1 |
| Merchant Road       | D5       | Purvis Street        | E3             | Street 1                      | D8 E8 |
| Middle Road         | E3       | Queen Street         | E3             | Street 2                      | D8 E8 |
| Mohamed Sultan Road | C4       | Race Course Road     | E1             | Street 3                      | D8    |
| Monk's Hill Road    | C1       | Raeburn Park         | B7             | Street 4                      | D8 E8 |
| Monk's Hill Terrace | C1       | Raffles Avenue       | F4             | Street 5                      | C8 D8 |
| Mosque Street       | D5       | Raffles Boulevard    | F4             | Street 6                      | B8    |
| Mount Elisabeth     | B2       | Raffles Link         | E4 F4          | Street 7                      | B8    |
| Mount Emily Road    | D2       | Raffles Quay         | E6             | Sultan Gate                   | F2    |
| Nanson Road         | C4       | Rangoon Road         | E1             | Sungei Road                   | E2    |
| Nathan Road         | A4       | Read Street          | D4             | Syed Alwi Road                | E1    |
| Neil Road           | C6       | Republic Avenue      | G3             | Tan Quee Lan Street           | E3 F3 |
| New Bridge Road     | C6 D5    | Republic Boulevard   | F4 G4          | Tanjong Pagar                 | C7    |
| Nicoll Highway      | F3 G2 G3 | Rhu Cross            | G3             | Tanjong Pagar Road            | D6    |
| Nile Road           | A4       | River Valley Close   | B4             | Tanjong Pagar Terminal Avenue | D7 D8 |
| Niven Road          | D2       | River Valley Road    | A4 B3 B4 C4 D4 | Tanjong Rhu                   | G3    |
| Norris Road         | E1       | Road A               | E8             | Tanjong Rhu View              | G3    |
| North Boat Quay     | D4 E5    | Road E               | D8             | Telok Ayer Street             | D6    |
| North Bridge Road   | E3 E4 F2 | Road F               | D8             | Temasek Avenue                | F4    |
| North Canal Road    | D5       | Road G               | D8             | Temasek Boulevard             | F4    |
| Northumberland Road | E1       | Road H               | D8             | Temple Street                 | C5 D5 |
| Nutmeg Road         | B2       | Road K               | C8             | Third Hospital Avenue         | B6    |
| One Tree Hill       | A2 A3    | Road M               | B8             | Tiong Bahru Road              | A5    |
| Ophir Road          | F3       | Road N               | A8             | Tiong Poh Avenue              | A6    |
| Orange Grove Road   | A1 A2    | Roberts Lane         | E1             | Tiverton Lane                 | B3 C3 |

|                     |       |                     |       |                  |          |
|---------------------|-------|---------------------|-------|------------------|----------|
| Tong Watt Road      | C4    | Upper Hokien Street | D5    | Wilkie Road      | D2       |
| Tras Street         | D6 D7 | Upper Weld Road     | E2    | Winstedt Road    | C1       |
| Trengganu Street    | D5 D6 | Upper Wilkie Road   | D2    | Yong Siak Street | A5 A6    |
| Tyrwhitt Road       | F1    | Veerasamy Road      | E1 E2 | York Hill        | B5 C5    |
| Unity Street        | C4    | Victoria Street     | E3 F2 | Zion Close       | A4       |
| Upper Circular Road | D4 D5 | Wallich Street      | D6    | Zion Road        | A4 B4 B5 |
| Upper Cross Street  | C5 D5 | Waterloo Street     | E3    |                  |          |