



# Tasmania

in collaboration with Tourism Tasmania

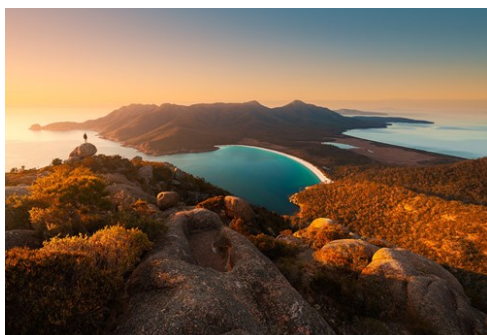
Photo: Tourism Tasmania and Brian Dullaghan



Tourism Tasmania



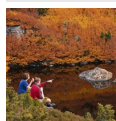
Tourism Tasmania and Melissa Findley



Tourism Tasmania and Matt Donovan

Tasmania is an island at the edge of the world. Small enough to get around easily, big enough to explore diverse landscapes and make countless discoveries. In one day, wake to the cleanest air in the world, hear stories of early convict life, cruise soaring sea cliffs, sip whisky at cellar doors, and devour paddock-to-plate food. In Tasmania, anything's possible.

## Events



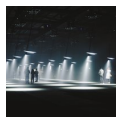
### Autumn Events

Autumn is time for touring, walking, autumn colours and waking early for far...



### Winter Events

Winter is the season for alpine walks, hot tubs, open log fires and a glass ...



### Dark Mofo

Rug up as Hobart's winter arts festival draws people out into the night to e...



### Huon Valley Mid Winter Fes...

Never heard of wassailing? An ancient pagan ritual where people sing to tree...



### Spring Events

From September to November, spring brings longer, warmer days and cool night...

## Top 5



### Cradle Mountain

Cradle Mountain, at the northern end of the Cradle Mountain-Lake St Clair Na...



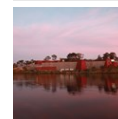
### Mt Wellington

In some cities you can take an elevator to the top of one of the tallest bui...



### Bay of Fires

The Bay of Fires is a Tassie favourite. Here a ribbon of coves, rocky outcro...



### Mona, Museum of Old and Ne...

Mona is a three level subterranean art space dug into a sandstone cliff face...



### Maria Island

Maria Island is a natural wildlife sanctuary and off-shore retreat with hist...



## TOWNS



Kathryn Leahy

Risk-taking artists, passionate producers, inventive chefs and soulful heritage bring light and shade to Tasmanian towns. Hobart in the south and Launceston in the north are the two largest centres with Hobart being Tasmania's capital. Strahan is the major centre on the west coast and St Helens and Coles bay are on the east coast.

### Hobart



Tasmania's capital and Australia's second oldest city, Hobart offers a contrasting blend of heritage, scenery and culture, with world class activities and attractions nearby. Nestled amongst the foothills of Mt Wellington, Hobart combines heritage charm with a modern lifestyle in a setting of exceptional beauty.

Photo: Kathryn Leahy

### Launceston



Launceston is Tasmania's second major city and a vibrant hub for food and wine, culture and nature. The city is full of character, eye-catching

architecture, quaint shop fronts and interesting stores. Things are hand made local, with pride, and displayed in boutique stores, galleries and design hubs.

Photo: Jarrad Seng

### Strahan



Strahan is a charming harbour-side village on the west coast set on the edge of the Tasmanian Wilderness World Heritage Area. Nestled on the shores of massive Macquarie Harbour, Strahan is the gateway to the World Heritage listed Franklin-Gordon Wild Rivers National Park. Boat cruises provide an unforgettable journey into the pristine temperate rainforests.

Photo: Tourism Tasmania

Address: Strahan Tasmania

Internet: [www.discovertasmania.com.au](http://www.discovertasmania.com.au)

### Stanley



Stanley is a town of perfectly preserved colonial buildings, quaint cafes and quality B&B style cottages, all sheltering in the imposing shadow of the Nut, an immense flat topped, volcanic plug rising 150 metres straight up from the water's edge.

Photo: Tourism Tasmania

Address: Stanley Tasmania

Internet: [www.discovertasmania.com.au](http://www.discovertasmania.com.au)

### New Norfolk

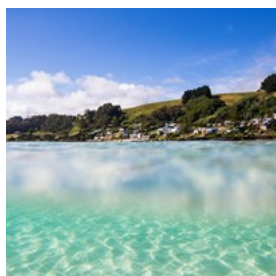


New Norfolk is a small town on the River Derwent 30 minutes west of Hobart in the Derwent Valley. The valley is home to Australia's most

acclaimed cooking school (the Agrarian Kitchen) and Mount Field National Park where you will be amazed by spectacular Russell Falls. Stop at the historic villages of Hamilton and Bothwell before reaching Cradle Mountain and Lake St Clair National Park with its World Heritage wilderness.

Photo: Stuart Gibson

### Boat Harbour Beach



Boat Harbour is a stunning seaside village on Tasmania's north west coast, sitting on a gentle slope overlooking Bass Strait. Protected by rocky

outcrops on either side, the pure white sands and azure waters of Boat Harbour beach glisten like a living magazine cover. A sweeping downhill road into the seaside village descends one into holiday mode with ease as the seascape comes into view. With two petite population areas, there is the option of staying within the beach community just a few steps from the sand or high up on the ridge with breathtaking vistas across Bass Strait.

Photo: Andrew McIntosh, Ocean Photography

More Info: <https://www.discovertasmania.com.au/about/regions-of-tasmania/north-west/boat-harbour>

### St Helens



St Helens is the largest town on Tasmania's North-East Coast and just a few kilometres away from Binalong Bay and the southern end of the

beautiful beaches of the Bay of Fires. Overlooking Georges Bay, chartered fishing boats cruise offshore for marlin and divers cruise beneath the surface to explore impressive kelp forests, underwater caves and colourful sea life.

St Helens offers all the services of a busy town with a positively laid back vibe, and that's just the way the locals and visitors like it. There's no shortage of eateries and shops to hang out in and people watching is a favourite local pastime.

Photo: Tourism Tasmania

Address: St Helens Tasmania

Internet: [www.discovertasmania.com.au](http://www.discovertasmania.com.au)

### Sheffield



Concealed in the foothills of majestic Mount Roland is the town of Sheffield, where history and art merge to create an entire town of murals. Just 30

kilometres south of Devonport this small towns claim to fame is the many murals that visually show the Kentish district history. Climb to the summit of the nearby 1,234 metre Mount Roland for stunning views.

Photo: Supplied Courtesy of Kentish Council

More Info: <https://www.discovertasmania.com.au/about/regions-of-tasmania/north-west/sheffield>

## Queenstown



Queenstown is the gateway to the West Coast with a rich and rugged mining history. It's also close to the edge of Tasmania's World

Heritage Wilderness Area and surrounded by great fishing lakes. The town was once the world's richest mining town. The copper mining and mass logging in the early 1900s created a surreal and rocky 'moonscape' of bare coloured conglomerate. Although Mother Nature is slowly creeping back into the landscape, the scenic drive into Queenstown down a spiralling road with over 90 bends is still nothing short of spectacular.

Photo: Tourism Tasmania

Address: Queenstown Tasmania

Internet: [www.discovertasmania.com.au](http://www.discovertasmania.com.au)

## Zeehan



Zeehan, once Tasmania's third largest town, is north of Queenstown on the west coast. Rich in mining history, its economy is focused

around tourism and the nearby Renison Bell tin mine. Its population today is 10 times smaller than it was at its peak in the early 20th century. The town's mining heritage is rich and fascinating.

Photo: Tourism Tasmania and Wai Nang Poon

## Richmond



Richmond is a picture-perfect village of cobbled streets, hand-made brick and mellow stone on the banks of the Coal River

and it's just 20 minutes out of Hobart. Walk across Australia's oldest bridge, built by convict labour between 1823 and 1825. Stand in the cell of the Richmond Gaol (1825), Australia's oldest goal, for an eerie insight into the hardships of early Van Diemen's Land convict life.

Photo: Tourism Tasmania

Internet: <http://www.discovertasmania.com.au/about/regions-of-tasmania/hobart-and-south/richmond>

## TOP THINGS TO DO



Stuart Gibson

Wild river cruises, confounding art museums, historic convict sites, wilderness cruises and walks to draw-dropping vistas. It's little wonder Tasmania is fast becoming a favourite destination for travellers worldwide.

## Cradle Mountain

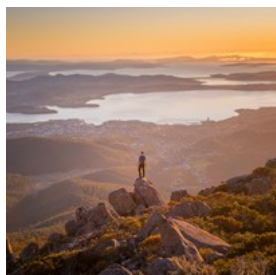


Cradle Mountain, at the northern end of the Cradle Mountain-Lake St Clair National Park, safeguards part of the Tasmanian World

Heritage Wilderness Area. The surrounding landscape is diverse and includes grassland, rainforest and ancient plants. The park also provides a rich habitat for wildlife including Tasmanian devils, quolls, platypus, echidna and several bird species. Embark on the Dove Lake Circuit track that hugs the lake shoreline for a pleasant, relatively flat six-kilometre walk beneath the towering spires of Cradle Mountain.

Photo: Tourism Tasmania  
Address: Cradle Mountain Tasmania  
Internet: <http://www.discovertasmania.com.au/about/regions-of-tasmania/north-west/cradle-mountain>

### Mt Wellington



In some cities you can take an elevator to the top of one of the tallest buildings in the world and be gobsmacked by extraordinary views.

Hobart doesn't need to do skyscrapers. At 1270 metres Mt Wellington is more than twice the height of the world's tallest building.

Photo: Tourism Tasmania  
Internet: <http://www.discovertasmania.com.au/about/national-parks-and-wilderness/mt-wellington-park>

### Bay of Fires



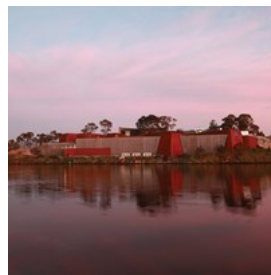
The Bay of Fires is a Tassie favourite. Here a ribbon of coves, rocky outcrops and empty beaches flow under azure skies. The Bay of Fires

Conservation Area has clean white beaches, blue water and granite boulders splashed with bright orange lichen. Beach activities and bird-watching are popular and you may see a pod of dolphins cruise parallel to the beach. The

area is known for its snorkelling and diving, with scenic reefs, corals, underwater caves and abundant sea life.

Photo: Tourism Tasmania  
Address: Bay of Fires Tasmania  
Internet: [www.discovertasmania.com.au](http://www.discovertasmania.com.au)

### Mona, Museum of Old and New Art



Mona is a three level subterranean art space dug into a sandstone cliff face underneath an ambient vineyard - its lawns dotted with pink

bean bags. Australia's largest private museum its unconventional and challenging curatorial approach makes Mona a must-see for any visitor to Australia.

Photo: Tourism Tasmania  
Address: 655 Main Rd, Berriedale  
Phone: +61 3 6277 9900  
Internet: [www.mona.net.au](http://www.mona.net.au)

### Maria Island



Maria Island is a natural wildlife sanctuary and off-shore retreat with historic ruins, sweeping bays, dramatic cliffs and plenty of stories to

tell.

Located off Tasmania's East Coast and accessible only by ferry, Maria Island contains the most intact example of a convict probation station in Australia. Here visitors can piece together Tasmania's intriguing convict history, encounter very cute wildlife and explore Maria Island's pristine beaches and ancient forests.

The island offers excellent walking and cycling journeys and a limestone quarry at the Fossil Cliffs provides a fascinating close-up look at the many ancient creatures immortalised as fossils in the rocks. The Painted Cliffs at Hopground Beach are beautifully patterned sandstone shaped by the mineral-rich water and wind.

Photo: Tourism Tasmania

Address: Maria Island Tasmania

Internet: [www.discovertasmania.com.au](http://www.discovertasmania.com.au)

### Bridestowe Lavender Estate



Forty-eight hectares of rolling lavender fields bloom a blanket of purple on one of the world's largest lavender farms.

The five-week harvest

begins in early January with the distillation and processing of the lavender in full swing. A tasting area allows you to experience the unique use of Bridestowe lavender as a subtle flavouring in superb quality foods. Sit and enjoy a coffee in the Bridestowe café or picnic under the century-old oak trees and stroll through the fields. The Bridestowe gift shop has lavender filled bears, lavender infused oils, lotions and potions and culinary lavender - so you can make your own lavender treats at home.

Photo: Luke Tscharke

Address: 296 Gillespies Road, Nabowla, Tasmania, 7260

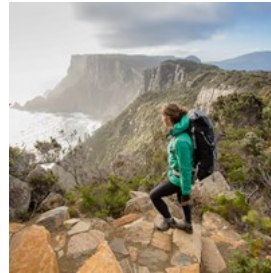
Phone: +61 3 6352 8182

Internet: <https://bridestowelavender.com.au/>

Email: [info@bridestowelavender.com.au](mailto:info@bridestowelavender.com.au)

More Info: <https://www.discovertasmania.com.au/attraction/bridestowelavenderestate>

### Three Capes Track



Few places on Earth remain that feel so remote, so raw, so removed from the ordinary. This cliff top walk atop Australia's

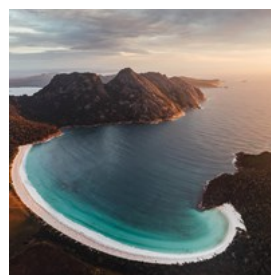
highest sea cliffs in the Tasman National Park on the Three Capes Track will refresh your senses. Three Capes is a self-guided walk with three cabin sites providing maximum comfort with minimal impact on the environment. Pellet heaters also keep walkers comfortable year-round.

Photo: Tourism Tasmania

Address: Port Arthur Tasmania

Internet: [www.greatwalkstasmania.com](http://www.greatwalkstasmania.com)

### Wineglass Bay



Heard of this one? It's graced the cover of many a glossy brochure for good reason - it's simply spectacular. Think sapphire sea lapping a

curve of perfect white sand; the type of beach normally reserved for romantic movie scenes. But at our Wineglass Bay, anyone can wander this picture-perfect setting. Feeling energetic? Climb The Hazards to look out over Wineglass Bay, or paddle under the pink mountains in a kayak. If this all sounds too exhausting, blame the laid back coastal lifestyle and hop on a scenic flight - by far the best way to see Wineglass Bay's faultless half-moon curve. You can also book a four-day Wineglass Bay Sail Walk journey and you can drop anchor in the bay and call it your own for the evening.

Photo: Tourism Tasmania

Address: Wineglass Bay Tasmania

Internet: [www.discovertasmania.com.au](http://www.discovertasmania.com.au)

### Narawntapu National Park



There's good reason some consider this park the 'Serengeti of Tasmania.' It's quietly one of the best places to see wildlife.

Come at dusk and Forester kangaroos perform - grazing and bounding across long open plains.

Photo: Tourism Tasmania

Address: National park in Bakers Beach, Tasmania

Phone: +61 3 6428 6277

Internet: <http://www.discovertasmania.com.au/about/national-parks-and-wilderness/narawntapu-national-park>

### Mount Field National Park (Russell Falls)



Here you'll find Russell Falls, one of the most photographed waterfalls in Tasmania. Its three elegant tiers, framed by lush vegetation, have

attracted visitors for more than a hundred years. Put on your walking shoes and explore one of its easy walking tracks only a fifteen minute stroll from the car park.

Photo: Tourism Tasmania

Internet: <http://www.discovertasmania.com.au/attraction/mtfieldnationalpark>

### Corinna Wilderness Experience



Corinna is a Wilderness Experience that offers a rare opportunity to discover Tasmania's remote west coast. This former gold-mining town

is the southern gateway to the globally significant Tarkine forest. Recently transformed

into a tourism experience, Corinna offers visitors access to rich pioneering and natural history. Set in pristine temperate rainforest, Corinna provides cottage accommodation, a stately guesthouse and the Tarkine Hotel and Tannin Restaurant, serving regional produce onsite.

Photo: Tourism Tasmania and Rob Burnett

Address: PO Box 105 Zeehan TAS 7469

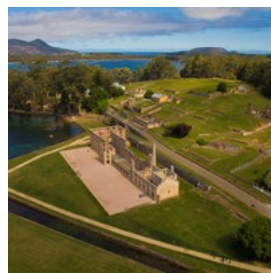
Phone: +61 3 6446 1170

Internet: <https://corinna.com.au/>

Email: [sales@corinna.com.au](mailto:sales@corinna.com.au)

More Info: <https://www.discovertasmania.com.au/accommodation/tarkinewildernessexperience>

### Port Arthur Historic Site



Discover an intriguing history that helped shaped Australia at the World Heritage-listed Port Arthur Historic Site. Port Arthur is the

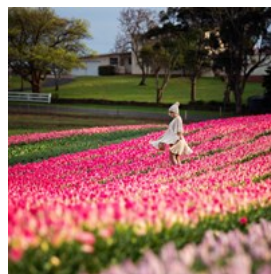
best-preserved convict settlement in Australia and among the most significant convict era sites in the world.

Photo: Tourism Tasmania

Address: Port Arthur Tasmania

Internet: [www.portarthur.org.au](http://www.portarthur.org.au)

### Table Cape Tulip Farm



The tulips from Tasmania's north west coast are so good, that the bulbs are exported all the way back to Holland! Come and see the tulips

in full bloom in Wynyard in October when the rows and rows of spectacular tulips adorn Table Cape.

Photo: Tourism Tasmania and Lauren Bath

### Gordon Dam Abseil

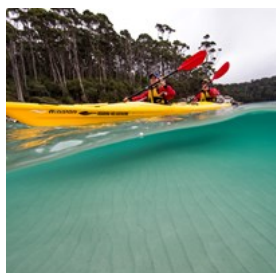


Climb over the edge of the railing and before you can say 'geronimo' you'll be well into your 140 metres of adrenaline-pumping

descent - the longest commercial abseil in the Southern Hemisphere.

Photo: Tourism Tasmania  
Address: 1 Anfield Street Glenorchy Tasmania  
Phone: +61 3 6273 7722  
Internet: [www.aardvarkadventures.com.au](http://www.aardvarkadventures.com.au)  
Email: [info@aardvarkadventures.com.au](mailto:info@aardvarkadventures.com.au)

### Roaring 40s Kayaking

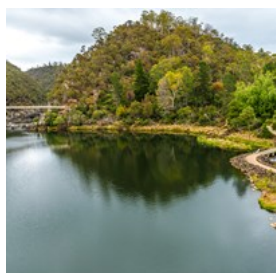


Take a two-and-a-half-hour city paddle with fish and chips, a day tour around Hobart exploring cliffs, caves and beaches, a

multi-day expedition into the Tasmanian wilderness, or try an expedition amongst stunning landscapes as you glide far from the beaten paths of modern life.

Photo: Tourism Tasmania  
Internet: [www.roaring40skayaking.com.au](http://www.roaring40skayaking.com.au)  
Email: [info@roaring40skayaking.com.au](mailto:info@roaring40skayaking.com.au)

### Cataract Gorge



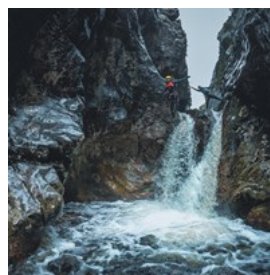
Laze away the day at Cataract Gorge Reserve only a few minutes from the centre of Launceston. There are peacocks and wallabies, rock climbing

and a swimming pool at this popular urban playground. Follow a pathway along the cliff face looking down onto the South Esk River. On the shady northern side, known as the Cliff Grounds,

is a Victorian garden with ferns and exotic plants. Wander across the footbridge and take a chairlift ride across the river.

Photo: Tourism Tasmania  
Address: Launceston Tasmania  
Internet: [www.launcestoncataractgorge.com.au](http://www.launcestoncataractgorge.com.au)

### Cradle Mountain Canyons



If adventure, wilderness and action is that you're after - head to the alpine reaches of Cradle Mountain and climb into a wetsuit. Cradle

Mountain Canyons run trips where you jump, swim and abseil through ancient canyons.

Photo: Off the Path  
Address: Cradle Mountain Tasmania  
Internet: [www.discovertasmania.com.au](http://www.discovertasmania.com.au)

### Bay of Fires Lodge Walk



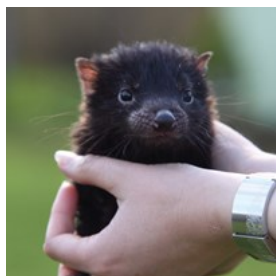
The Bay of Fires Walk covers a coastline where there are more extraordinary white sandy beaches than houses. Immerse yourself

in the pristine coastal environment teeming with wildlife. Accommodation is uncomplicated and luxurious of either the beach camp or exclusive Bay of Fires Lodge, an airy seaside cliff top lodge overlooking the azure ocean and blazing orange boulders. Walk through the bush to the spa, beginning your spa experience with a soothing soak in the outdoor bathing pavilion.

Photo: Tourism Tasmania  
Address: Bay of Fires Tasmania  
Internet: [www.greatwalkstasmania.com](http://www.greatwalkstasmania.com)



### Devils@Cradle



It doesn't get much more Tasmanian than Cradle Mountain and Tassie devils. Keep an eye on the clock because the Devils@Cradle feeding

tour happens at 5.30pm sharp - or the devils get mad. This is a rare chance to observe these unique animals in the company of some fellow carnivorous marsupials - the eastern and spotted-tail quoll.

Photo: Tourism Tasmania

Address: 3950 Cradle Mountain Rd Cradle Mountain Tasmania  
Internet: [www.devilsatcradle.com](http://www.devilsatcradle.com)

### Blue Derby Mountain Bike Trail



Riders worldwide are making tracks to Tasmania. Blue Derby is a network of trails that surround the town of Derby. Once the centre of

a tin mining boom, these days it's the mountain bikers carving up the dirt. Cruise to the top of the hill. Tear downhill as fast as you can. Repeat.

Photo: Kane Naaraat and Pinkbike.com

Address: Derby Tasmania

Internet: [www.ridebluederby.com.au](http://www.ridebluederby.com.au)

### Gordon River Cruise



A cruise down the Gordon River rewards with mirror-calm reflections of World Heritage Area rainforest. Gordon River Cruises and World

Heritage Cruises can take you down this ancient waterway stopping off at Sarah Island where you'll get a history lesson as you walk among the

ruins of this once notorious convict settlement.

Photo: Tourism Tasmania

Address: Gordon River Tasmania

Internet: [www.discovertasmania.com.au](http://www.discovertasmania.com.au)

### King River Rafting



Be swept away on the King River Rafting adventure on Tasmania's west coast. Your journey begins aboard the 118-year-old West Coast

Wilderness Railway, Australia's only steam train of its kind. With rafts atop and rafters aboard, the train will travel through remote rainforests and incredible landscapes to Dubbil Barril where your journey takes a rapid turn. Here you'll swap comfort for courage as you plunge into the rapids of the mighty King River, which flows as fast as the adrenaline. Along the way, when the waters are calm, your guide will share stories of the region's fascinating history.

Photo: Tourism Tasmania

Address: King River Tasmania

Internet: [www.kingriverrafting.com.au](http://www.kingriverrafting.com.au)

Email: [kingriverrafting@bigpond.com](mailto:kingriverrafting@bigpond.com)

### Pennicott Wilderness Journeys



Cruise along the rugged coast of Bruny Island to see Albatross, dolphins, seals and migrating whales or the Tasman Peninsula coastline to see

the highest sea cliffs in the Southern Hemisphere and Tasman Island.

Photo: Tourism Tasmania

Address: Bruny Island

Phone: +61 3 6234 4270

Internet: [www.brunycruises.com.au](http://www.brunycruises.com.au)

Email: [info@pennicottjourneys.com.au](mailto:info@pennicottjourneys.com.au)

### Bicheno Penguin Tour



See wild little penguins emerge from the ocean and head for their homes in a natural rookery on an after-dark tour.

Established by locals to protect the penguin population, the tour lets you get close to the penguins without disturbing their nightly journey. These are wild birds, so penguin numbers and arrival times vary with the life-cycle activity and weather, with larger numbers of 100 -125 birds from September to January. You can expect to get very close to a penguin on this tour.

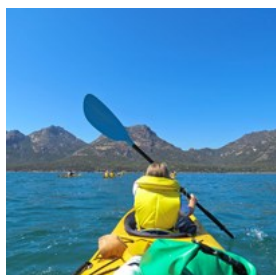
Photo: Tourism Tasmania

Address: Bicheno Tasmania

Phone: +61 3 6375 1333

Internet: [www.bichenopenguintours.com.au](http://www.bichenopenguintours.com.au)

### Freycinet Adventures



Sea kayak into the heart of Freycinet National Park - the contrasts are stunning. Pink granite mountains, sandy beaches and clear blue

water.

Photo: Tourism Tasmania

Address: 2 Freycinet Drive, Coles Bay Tasmania

Phone: +61 3 6257 0500

Internet: [www.freycinetadventures.com.au](http://www.freycinetadventures.com.au)

Email: [info@freycinetadventures.com.au](mailto:info@freycinetadventures.com.au)

### West Coast Wilderness Railway



It is an engineering marvel, the world's steepest steam-operated railway. This is Tasmania's West Coast Wilderness Railway, and

it is 28 tonnes of special.

Today, passengers are moved by the same locomotives that began the run from Queenstown back in 1896. They take a comfortable 16-kilometre run through the wildlands, uphill through spectacular landscapes and down to a place called Dubbill Barrill, with stops for a little gold panning and sightseeing.

These locos were originally built to move copper ore for the Mount Lyell Mining and Railway Company, delivering the mine's deep riches out of a massive, landlocked deposit at Queenstown to the port of Strahan, and from there, to the world.

And every passenger is greeted by one of the line's original workhorses, a 28 tonne steam locomotive that's ready to roll - and guaranteed to raise a smile.

Photo: Tourism Tasmania

Address: Queenstown Tasmania

Internet: [www.wcwr.com.au](http://www.wcwr.com.au)

Email: [enquiries@wcwr.com.au](mailto:enquiries@wcwr.com.au)

### Barnbougale Dunes Golf Course



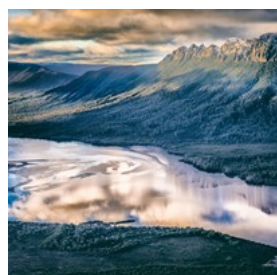
Barnbougale Dunes, a golfing destination on the coast of Bridport that's been rated Australia's number one public course more than once. Tee off

to the sound of crashing waves on a links course where sweeping beaches, farmland and manicured greens mix effortlessly. Challenge yourself to 18 holes followed by a Tasmanian

whisky in the clubhouse.

Photo: Tourism Tasmania  
Address: Bridport Tasmania  
Phone: +61 3 6356 0094.  
Internet: [www.barnbougle.com.au](http://www.barnbougle.com.au)

### Par Avion Wilderness Flights



Renowned for its flights into the Southwest National Park, a vast and special place of

extraordinary natural values that forms part of the Tasmanian Wilderness World Heritage Area, there's often more to a scenic flight with Par Avion. Fancy whisking that special someone away to devour oysters and wine on a picnic by the sea?

Photo: Matt Glastonbury  
Address: 115 Kennedy Drive Cambridge, Tasmania  
Phone: +61 3 6248 5390  
Internet: [www.paravion.com.au](http://www.paravion.com.au)  
Email: [flights@paravion.com.au](mailto:flights@paravion.com.au)

### Bonorong Wildlife Sanctuary



Bonorong offers a very hands-on experience rare in other zoos and wildlife parks, allowing you to share special moments with Australia's wildlife.

Tasmanian devils are active during the day, so you can view them any time. The park also looks after wombats, koalas, echidnas, birds and many more Tasmanian natives.

Photo: Tourism Tasmania  
Address: 593 Briggs Road Brighton Tasmania  
Phone: +61 3 6268 1184  
Internet: [www.bonorong.com.au](http://www.bonorong.com.au)

## DO AND SEE



Tourism Tasmania and Lisa Kuilenburg

Detached from mainland Australia, the island of Tasmania offers a very different experience from your typical Australian holiday. There are luxurious guided walks into the wilderness, wild ocean cruises where you'll enter sea caves and gaze at the tallest cliffs in the Southern Hemisphere, ocean kayaking, sailing, mountain climbing, bushwalking and wine tasting. The locals love to share stories of the island too. Expect ghost tours by candlelight, Aboriginal storytelling by campfires, and history that unravels as you explore mining towns and fishing villages of the island.

### West Coast

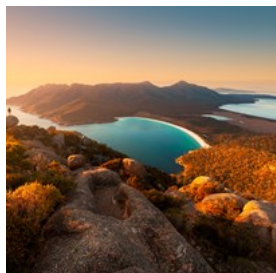


A labyrinth of rainforests, a network of mining towns, tales of convicts, rugged empty coastlines, and dense rainforests embody the

West Coast. Be transformed by empty coastlines and the greatest expanse of cool temperate rainforest in Australia, and second largest in the world - the Tarkine. Deep within this rainforest is Corinna, a historic mining town and base for river cruising, kayaking and bushwalking. Witness nature at its most pristine and meet down to earth people that lead a frontier lifestyle in a rugged, unspoilt land.

Photo: Tourism Tasmania

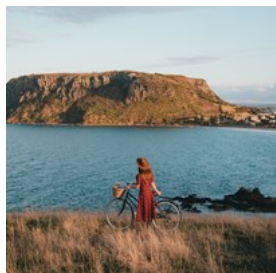
### East Coast



Along the East Coast you can dine on plump oysters and other fresh seafood, sip wine with the winemaker at one of the wineries along the coast, kayak with dolphins or take the ferry to Maria Island - a wildlife haven set amongst natural beauty and convict history.

Photo: Tourism Tasmania

### North West Coast



Pull back to a slower pace and soak in natural beauty, wild coastlines, picturesque towns and a slower lifestyle. Be transformed by wilderness, waterfalls and the greatest expanse of cool temperate rainforest in Australia, and second largest in the world - The Tarkine. The north west is also a bountiful food bowl and you can pick up fresh farm grown produce along the Cradle to Coast Tasting trail or taste it in the local restaurants.

Photo: Tourism Tasmania

### Flinders Island



With only 900 residents, Flinders is largely untouched wilderness and sometimes eerily quiet - bordered by more than 120 deserted beaches and surrounded by at least 65 shipwrecks.

Photo: Tourism Tasmania

Internet: [www.discovertasmania.com.au](http://www.discovertasmania.com.au)

### King Island



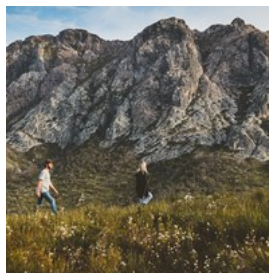
King Island lies off the North West Coast of Tasmania, surrounded by rugged coastline and full of fresh seafood, famously good produce and some of the cleanest air in the world. This is a destination for foodies who want to get close to the source and travel far from the rest of the world.

Photo: Tourism Tasmania

Address: King Island Tasmania

Internet: [www.discovertasmania.com.au](http://www.discovertasmania.com.au)

### Western Wilds



Tasmania's Western Wilds is a journey filled with the powerful wilderness stories of Tasmania's west. Covering the full diversity of the Tasmanian landscape, see everything from old growth rainforest, waterfalls, mirrored alpine lakes and highlands mountain ranges. But it's not just about exploring the wilderness, it's about uncovering the personal stories of pioneers, convicts, miners and piners. Hearing the tales of their struggles, survival, ingenuity and triumphs in the west. Take your time, slow down and explore further in the Western Wilds Tasmania. This is a journey you'll never want to end.

Photo: Tourism Tasmania and Stu Gibson

### Bruny Island



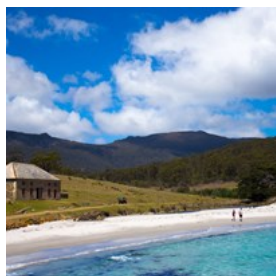
Bruny Island is known for its delicious produce and wine. Taste fresh seafood, sample fine Tasmanian whisky, eat handmade fudge and chocolate, pick berries and sample artisan cheeses.

Photo: Tourism Tasmania

Address: Bruny Island Tasmania

Internet: <http://www.discovertasmania.com.au/about/regions-of-tasmania/hobart-and-south/bruny-island>

### Maria Island



Explore the breathtaking beauty of Maria Island National Park. If you think this island is all about nature because you're in a national park,

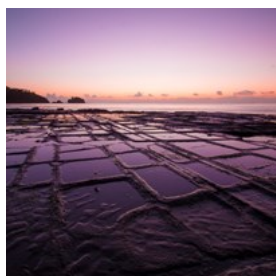
think again - the convict station at Darlington pre-dated Port Arthur.

Photo: Tourism Tasmania

Address: Maria Island

Internet: [www.greatwalkstasmania.com](http://www.greatwalkstasmania.com)

### Tasman Peninsula



Explore the natural wonders the Tasman Peninsula. A place of breathtaking seascapes, some of the tallest sea cliffs in the world and

wild ocean views. From Eaglehawk Neck to Port Arthur Historic Site, this fascinating journey is rich in convict history and natural beauty - but also thrilling adventure experiences that will take your breath away, encounters with sea and coastal wildlife that you will never forget and quality food and wine to savour and enjoy.

Photo: Tourism Tasmania

Internet: <http://www.discovertasmania.com.au/about/articles/tasman-peninsula>

### Freycinet National Park



When you first set eyes on Great Oyster Bay set against the backdrop of Freycinet National Park and the three pink-granite peaks of the

Hazards mountain range - you know you're somewhere different (and special). Located on Tasmania's beautiful East Coast, the Freycinet National Park occupies most of the Freycinet Peninsula. The 10,000 ha park is loaded with natural assets, including the granite peaks of the Hazards that dominate the Peninsula and the iconic and much-photographed Wineglass Bay. It is also a wildlife haven to Tasmanian pademelons, white-breasted sea eagles, and red-necked wallabies. There are long and short walks across the park to secluded bays, clean beaches and bird-filled lagoons.

Photo: Tourism Tasmania

Address: Freycinet Peninsula

Internet: [www.discovertasmania.com.au](http://www.discovertasmania.com.au)

### The Tarkine Drive



The Tarkine Drive in Tasmania's North West is easily accessible for anyone wanting to get back in touch with nature and experience the

wilderness. The loop takes travellers through natural and dramatic landscapes surrounded by rainforest and tall eucalypts with impressive widespread views over rivers and beyond. Completing the loop is the Trowutta Arch Rain Forest Walk - a stunning and natural geological

structure.

Photo: Tourism Tasmania  
Address: Stanley Tasmania  
Internet: [www.discovertasmania.com.au](http://www.discovertasmania.com.au)

## 60 Great Short Walks

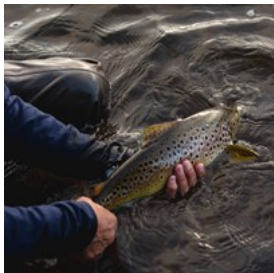


Tasmania is home to some of Australia's most iconic walks – the Bay of Fires, Maria Island and of course the Overland Track, to name a few. But

one doesn't have to embark on a multi-day trek to experience the best of Tassie on foot. Work your way down the list of Tasmania's 60 Great Short Walks. They give just about anybody the chance to explore some of Tassie's most scenic and iconic regions, in walks ranging from about 20 minutes to a couple of hours.

Photo: Tourism Tasmania  
Address: Tasmania  
Internet: [www.greatwalkstasmania.com](http://www.greatwalkstasmania.com)

## Central Highlands Fly Fishing

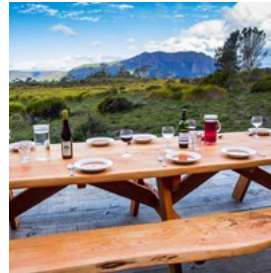


Tasmania is one of the last great wild fisheries. Glassy lagoons, remote highland lakes and freestone rivers provide seclusion and excellent

dry fly fishing from September to May. There are over 3,000 lakes, rivers and streams in Tassie. You'll be excited to discover almost all of them hold wild brown and rainbow trout. The varied terrain also creates some pretty memorable challenges.

Photo: Tourism Tasmania and Samuel Shelley  
Address: Central Highlands, Tasmania

## Cradle Mountain Huts Walk

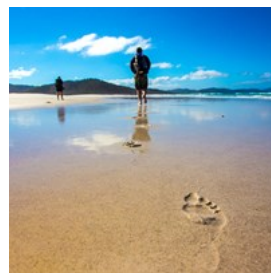


The Cradle Mountain Huts guided walk is a great opportunity to discover the dramatic landscapes and extraordinary diversity of

the Cradle Mountain & Lake St. Clair National Park within Tasmania's World Heritage Area. Following the iconic Overland Track, the walk extends from Cradle Valley to Lake St Clair through a variety of spectacular landscapes. In the evening, relax in the comfort of private huts, enjoy hot showers and three-course meals.

Photo: Tourism Tasmania  
Address: Cradle Mountain Tasmania  
Internet: [www.greatwalkstasmania.com](http://www.greatwalkstasmania.com)

## The Freycinet Experience Walk



Leave everyday life behind for the Freycinet National Park. Each day a new adventure unfolds as you access the most isolated corners of the

park. Snorkel clear waters, walk to magnificent views and walk the powder white sand of Wineglass Bay under the Hazards mountain range. At night enjoy hot showers, deep baths and wine by the log fire. Peruse the lodge's library, watch wildlife and enjoy indulgent meals prepared by your hosts.

Photo: Tourism Tasmania  
Address: Freycinet National Park Tasmania  
Internet: [www.greatwalkstasmania.com](http://www.greatwalkstasmania.com)

### Tasmanian Museum and Art Gallery



The Tasmanian Museum and Art Gallery is the second oldest museum in Australia. Today, the gallery's collections sit in a stunning contemporary design, sensitively integrated with the museum's heritage buildings. Known as TMAG to locals, the museum's art collection includes works from Tasmania's colonial period through to contemporary Australian and international artists.

Photo: Tourism Tasmania  
Address: Dunn Place Hobart Tasmania  
Opening hours: jksvb  
Phone: +61 3 6165 7000  
Internet: [www.tmag.tas.gov.au](http://www.tmag.tas.gov.au)  
Email: [tmagmail@tmag.tas.gov.au](mailto:tmagmail@tmag.tas.gov.au)

### The Tarkine Rainforest Walk



Enter the Tarkine, the largest tract of temperate rainforest in the Southern Hemisphere. Explore with little more than a day pack as you discover the wilderness and dine on fresh produce. Freshen up in a Japanese-style washroom, dine among the ferns and settle next to a fire.

Photo: Tourism Tasmania  
Address: The Tarkine Rainforest  
Internet: [www.greatwalkstasmania.com](http://www.greatwalkstasmania.com)

### All4Adventure Quad bike tours



With four big rubber tyres beneath, accelerate up the sandy path on your way to the southern end of sweeping Friendly Beaches. As you wind

through Eucalypt covered hills you might decide this is a terribly fun way to reach isolated nooks of the Freycinet Peninsula. Navigate boulder-filled valleys and drop into an abandoned mining cottage before reaching the coast. In true east coast style, your afternoon tea stop is a cracker with rolling turquoise waves and orange lichen laid out like a picnic rug across granite boulders. A thrilling quad bike adventure for those who seek a unique view of the Freycinet National Park.

Photo: Tourism Tasmania  
Address: 1 Reserve Rd, Coles Bay Tasmania  
Internet: [www.all4adventure.com.au](http://www.all4adventure.com.au)  
Email: [info@all4adventure.com.au](mailto:info@all4adventure.com.au)

### Great Eastern Drive



The Great Eastern Drive - it's a place of stomach filling soul food and jaw-dropping vistas. Pristine water, rich soil and a mild climate make for a killer oyster and wine road trip. Add ocean-going adventures and friendly locals and you have all the ingredients for the perfect coastal break.

Between Orford and the Bay of Fires - you'll find picture blinding white beaches, azure water and bright orange boulders. See Tassie's East Coast with your own eyes and it will stay with you forever. Lace up and walk off plump oysters along sandy stretches of shell-strewn beaches. Stop, take your time - the Great Eastern Drive promises a winding coastal sojourn along a blindingly beautiful coastline and ridiculous beaches, topped off with a gentle coastal breeze.

Photo: Tourism Tasmania  
Address: Orford - Bay of Fires Tasmania

Internet: [www.discovertasmania.com.au](http://www.discovertasmania.com.au)

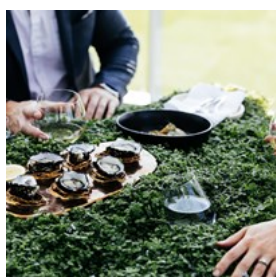
## RESTAURANTS



Osborne Images

In Tasmania you won't just taste the food, you'll meet passionate producers and innovative chefs leading a cultural food revolution. There are farmers markets, cutting edge restaurants, gourmet walking tours, farm gates and providores scattered all across the island. There's also good reason Tasmania's wine, cider, beer and spirits are highly sought after. The island's moderate climate provides the perfect ingredients for winemaking, brewing and distilling.

### Hobart Dining



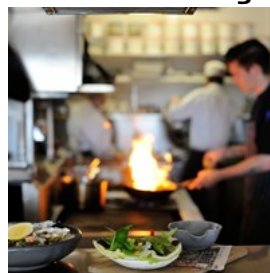
New restaurants and watering holes are popping up all over the city. Aloft and The Glass House bring a new sophistication to the

waterfront. Then there's Frank, Etties, Landscapes, Templo, Franklin, the list goes on. Plus there's whisky bars, gourmet tours and cooking schools to tempt your taste buds.

Photo: Adam Gibson

Internet: <http://www.discovertasmania.com.au/what-to-do/food-and-drink>

### Launceston Dining



Eat your way through Launceston and experience perfect examples of paddock-to-plate dining. Geronimo Apertivo Bar

and Restaurant is a moody den bursting with regional seasonal produce, most of which is sourced from owner-manager Jeremy Kode's farm. Dine in an old timber flour mill with extraordinary views of the serene Tamar River at Stillwater. Mud Bar and Restaurant focuses on Asian flavours. Hallams dishes up sustainable line caught fresh seafood. Try the upmarket steakhouse, Black Cow Bistro, with a menu showcasing Tasmanian steak.

Photo: Tourism Tasmania

Internet: [www.discovertasmania.com.au](http://www.discovertasmania.com.au)

### Timbre Kitchen



Timbre Kitchen serves up homemade food made with local and seasonal produce that matches perfectly with the wines from onsite winery Velo.

Photo: Tourism Tasmania

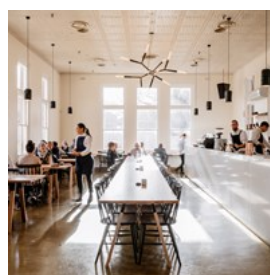
Address: 755 West Tamar Highway, Legana TAS

Phone: +61 3 6330 3677

Internet: <https://www.timbrekitchen.com/>

Email: [info@timbrekitchen.com](mailto:info@timbrekitchen.com)

### The Agrarian Kitchen Eatery



Housed in New Norfolk's former mental asylum this contemporary restaurant run by former Gourmet Traveller editor Rodney Dunn is a perfect

reflection of fresh food sourced locally and



whatever is seasonal in Rodney's garden.

Photo: Tourism Tasmania

Address: 11A The Avenue New Norfolk TAS 7140

Internet: [https://www.theagrariankitchen.com/The\\_Agrarian\\_Kitchen/The\\_Agrarian\\_Kitchen\\_Eatery.html](https://www.theagrariankitchen.com/The_Agrarian_Kitchen/The_Agrarian_Kitchen_Eatery.html)

Email: [eatery@theagrariankitchen.com](mailto:eatery@theagrariankitchen.com)

### Freycinet Marine Farm



Nothing captures a sense of place more honestly than an oyster, and these oysters pulled from the nearby lagoon are just about as salty as they get

- it's the farm's signature flavour.

Photo: Tourism Tasmania

Address: 1784 Coles bay Road, Coles Bay

Phone: +61 3 6257 0140

Internet: [www.freycinetmarinefarm.com](http://www.freycinetmarinefarm.com)

Email: [oysters@freycinetmarinefarm.com](mailto:oysters@freycinetmarinefarm.com)

### Ashgrove Cheese



Visit Ashgrove Farm Cheese, taste their award-winning fresh bottled milk, cream, butter and uniquely flavoured cheeses. Take a

take a peek through the viewing window to the factory where the Bennett's traditional cheese making processes still churn out their prize produce.

Photo: Tourism Tasmania

Address: 6173 Bass Hwy, Elizabeth Town

Phone: +61 3 6368 1105

Internet: [www.ashgrovecheese.com.au](http://www.ashgrovecheese.com.au)

Email: [info@ashgrovecheese.com.au](mailto:info@ashgrovecheese.com.au)

### Get Shucked



Get Shucked on Bruny Island goes through a few thousand dozen oysters each day. The oyster farmer mines them each morning from

nutrient-rich waters that come straight from the wild Southern Ocean. There's also an oyster drive-through if you prefer the rest of your shellfish on the run.

Photo: Tourism Tasmania

Address: 1735 Bruny Island Main Rd, Great Bay TAS 7150

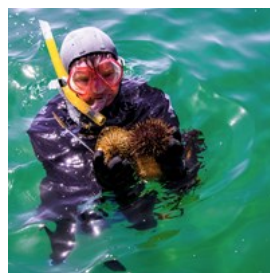
Opening hours: Open 364 Days 9:30am-4:30pm (Closed Christmas Day and Boxing Day)

Phone: +61 439 303 597

Internet: <https://www.getshucked.com.au/>

Email: [info@getshucked.com.au](mailto:info@getshucked.com.au)

### Seafood Seduction Tour



Cruise the Derwent River to the waters surrounding Bruny Island - here your guide gathers oysters, mussels, sea urchin and abalone straight from the

sea. Anchored in sheltered waters help prepare a seafood bounty on board.

Photo: Tourism Tasmania

Address: Hobart Tasmania

Phone: +61 3 6234 4270

Internet: [www.seafoodseduction.com.au](http://www.seafoodseduction.com.au)

### Cradle to Coast Tasting Trail



Let your tastebuds follow the Cradle to Coast Tasting Trail to growers, farm gates and cellar doors on a journey of gastronomic proportions.

The trail is designed to help you discover the

best artisanal producers this special region of Tasmania has to offer.

Photo: Tourism Tasmania

Address: North West Tasmania

Internet: <http://www.discovertasmania.com.au/about/articles/cradle-to-coast-tasting-trail>

### Red Feather Inn Cooking School



The Red Feather Cooking School provides a wealth of culinary knowledge.

Learn the culinary tricks of the trade with like-minded foodies using

locally sourced ingredients and you'll soon be as passionate about Tasmanian produce as they are. Together with the Red Feather Inn luxury accommodation, this cooking school is an experience to savour.

Photo: Tourism Tasmania

Address: 42 Main Street Hadspen Tasmania

Phone: +61 3 6393 6506

Internet: [www.redfeatherinn.com.au](http://www.redfeatherinn.com.au)

### Grandvewe Sheep Cheesery and Hartshorn Distillery



Every day, at any time, you can step behind the scenes to become part of a working cheesery. At Grandvewe, the affinage experience will have you

turning, rubbing down, hooping and salting cheese by hand with the head cheesemaker. After honing your newly developed cheese-crafting skills, sit back with the cheese master once more, this time over a tasting. Post tasting, build a cheese platter and take your seat on the balcony overlooking the paddock, the D'Entrecasteaux Channel and bleating sheep - oblivious to the gastronomic delights they have

delivered before you. Wash it down with local ginger beer or smooth vodka with little heat but loads of character. The onsite Hartshorn Distillery, produces small-batch 'sheep's whey' vodka. Each bottle hand-sprayed black, hand-written and signed by Ryan Hartshorn himself.

Photo: Tourism Tasmania

Address: 59 Devlyns Road Birchs Bay Tasmania

Internet: [www.grandvewe.com.au](http://www.grandvewe.com.au)

Email: [info@grandvewe.com](mailto:info@grandvewe.com)

### Gourmania Food Tours



Join Gourmania Food Tours to taste fresh seafood, nibble cheeses and sip wine. With a local at your side, weave your way through Hobart's

streets and laneways and learn the city's history and fine food secrets - straight from the edgy foodies shaping the Tasmanian food experience.

Photo: Tourism Tasmania

Address: Hobart Tasmania

Phone: +61 419 180 113

Internet: [www.gourmaniafoodtours.com.au](http://www.gourmaniafoodtours.com.au)

### Kate's Berry Farm



In Swansea at Kate's Berry Farm, crispy hot waffles and a compote of poached berries go nicely with views across Great

Oyster Bay. Acclaimed for her truly outstanding cool climate berries, Kate offers a unique range of mouth watering quality produce and products that highlight what Tasmania does so well.

Photo: Tourism Tasmania

Address: 12 Addison Street Swansea Tasmania

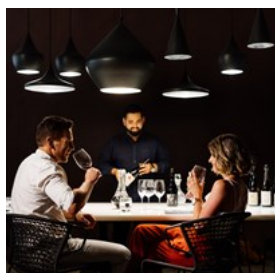
Phone: + 61 3 62578 428  
Internet: [www.katesberryfarm.com](http://www.katesberryfarm.com)

## BARS



There's good reason Tasmania's wine, cider, beer and spirits are highly sought after. The island's moderate climate provides the perfect ingredients for winemaking, brewing and distilling.

### Moorilla Cellar Door



Moorilla has developed in tandem with mona, Museum of Old and New Art, with an emphasis on the production of wines that mirror Mona's

overall philosophy.

Photo: Tourism Tasmania  
Address: 655 Main Road, Berriedale Tasmania 7011  
Phone: +61 3 6277 9960  
Internet: <https://moorilla.com.au/>  
Email: [cellardoor@mona.net.au](mailto:cellardoor@mona.net.au)

### Mona's Void Bar



Prop yourself up at the bar for some of Hobart's best cocktails including the staples and some of those that have been forgotten.

Photo: Tourism Tasmania

Address: Level 3, Mona, 655 Main Rd, Berriedale TAS 7011  
Internet: <https://mona.net.au/eat-drink/void-bar>

### Southern Wild Distillery



At Southern Wild Distillery in Devonport, food scientist turned distiller, George Burgess, takes you from the

mountain to the meadows to the sea. Dasher + Fisher gins are named after two wild rivers that run from the snowmelt of Cradle Mountain. Let George take you on a flavour meander (by appointment), right where he makes the gin. Find out what producers he calls on to blend with his signature wakame, lavender and native pepperberry. Stay on for cocktails ... perhaps a gin mimosa starring Mountain Gin, Devil's Corner sparkling and Spreyton Fresh orange juice?

Photo: Tourism Tasmania  
Address: 13-17 Oldaker Street, Devonport Tasmania Australia 7310  
Internet: <https://www.southernwilddistillery.com/>  
Email: [enquiries@southernwilddistillery.com](mailto:enquiries@southernwilddistillery.com)

### Society Salamanca



Tucked away from the bustle of Salamanca, Society offers Hobart's largest most extensive spirit library. Gin tastings platters highlight

award-winning gin makers from around the island - each gin comes with a unique garnish designed to highlight key botanicals. All served up with house-made Tassie tonic.

Photo: Rosie Hastie  
Address: 22 Montpelier Retreat, Battery Point, Hobart Tasmania Australia 7004  
Opening hours: Tuesday to Thursday from 5pm, Friday and

Saturday from 4pm  
Phone: +61 3 6223 1497  
Internet: <https://societyssalamanca.com/>

### The Tasmanian Whisky Trail



In one of the few places in the world where whisky is still made the old-fashioned way, it's the people that make Tasmanian whisky special. Pure water running off mountains is ideal for producing fine whisky. Just like in the 1830s, Tasmanian whisky is handcrafted slowly in copper stills, matured in small barrels and hand bottled by whisky lovers, for whisky lovers, worldwide.

Photo: Tourism Tasmania  
Address: Derwent Valley Tasmania  
Internet: <http://taswhiskytrail.com>

### The Tasmanian Cider Trail



Curious about the Apple Isle's rosy reds transformation into moreish cider? It's the characters behind the brew that makes Tasmanian cider special.

Photo: Tourism Tasmania  
Address: Tasmania Australia  
Internet: <http://www.tascidertrail.com>

### The Tasmanian Beer Trail



Discover the charming characters and captivating stories behind Tasmania's craft beers on the Tasmanian Beer Trail. Local brewers are always on the lookout for interesting ingredients,

resulting in some pretty wild and unusual ales.

Photo: Tourism Tasmania  
Internet: <http://tasbeertrail.com>

### Tamar Valley Wine Route



Over 170 kilometres of winding roads make up the Tamar Valley Wine Route. But it's not just enviable cool-climate wine territory and cellar doors that you'll come across. You'll find hazelnuts, lush orchards, pastures and a world-class fave not to miss- Jansz Tasmania- the type of sparkling that has put Pipers River Valley on the world map. Refuel with a delicious tasting plate of local cheese, charcuterie and seafood at Moore's Hill Vineyard. There's also craft beer, cider, coffee and whisky all served in a uber comfy and arty setting.

Photo: Tourism Tasmania and Lauren Bath

### Bangor Vineyard Shed



Stop at Bangor Vineyard Shed along the road to and from Port Arthur and indulge in oysters plucked from the waters before you and wine from vines growing just beyond the deck. Bangor is the cellar door for Bangor wines and the farm gate shop for Lease 170's oysters.

Photo: Tourism Tasmania  
Address: 20 Blackman Bay Road Dunalley Tasmania  
Phone: +61 3 62 535 558  
Internet: [www.bangorshed.com.au](http://www.bangorshed.com.au)  
Email: [info@bangorshed.com.au](mailto:info@bangorshed.com.au)

## ACCOMMODATION



Tourism Tasmania and RACT Destinations

Where you rest your head plays a big part in any holiday. It's your base from which to explore. Whether you want five-star luxury or a budget hotel or campground, Tasmania has accommodation for all kinds of travellers.

### Pumphouse Point

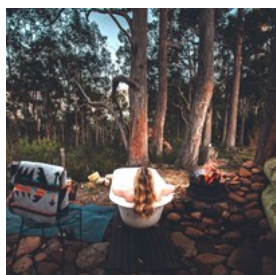


When you're perched out in the middle of the Southern Hemisphere's deepest freshwater lake, there are water views out the front and back door.

Walk fjord-like wilderness, share long-table meals and settle in with a Tasmanian whisky as Mother Nature turns on floor-to-ceiling entertainment.

Photo: Tourism Tasmania and Stu Gibson  
Address: 1 Lake St Clair Road, Lake St Clair  
Phone: +61 428 090 436  
Internet: <https://www.pumphousepoint.com.au/>  
Email: [info@pumphousepoint.com.au](mailto:info@pumphousepoint.com.au)

### Left of Field Caravan Park

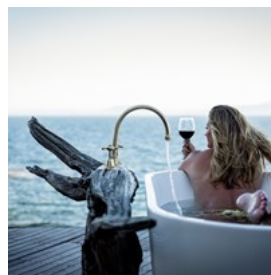


Nature lovers will adore this campground. Nestled next to the river surrounded by tall eucalypts is a special treat for those feeling a

little weary after wandering the forest paths all day – an outdoor bath under the stars. There's also a few resident platypus in the river, so keep an eye out for them during your stay.

Photo: Tourism Tasmania  
Address: 2440 Gordon River Road National Park, TAS  
Phone: +61 418 136 434  
Email: [adrian@leftoffield.net.au](mailto:adrian@leftoffield.net.au)

### Thalia Haven



Soak in Thalia's luxurious outdoor tub and relax in the wood-fired sauna. If this isn't enough, there's five kilometres of

coastline to explore at Thalia, including your own secluded beach.

Photo: Tourism Tasmania  
Address: Little Swanport TAS 7190  
Phone: +61 400 533 792  
Internet: <https://www.thaliahaven.com.au/>  
Email: [stay@thaliahaven.com.au](mailto:stay@thaliahaven.com.au)

### Satellite Island

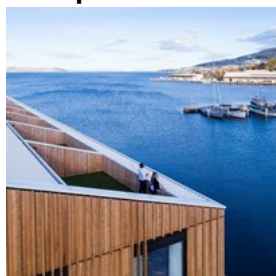


Escape to a private island that begs for unhurried kayak jaunts from your water-locked base and coastal walks around Satellite Island that end

with fresh oysters plucked from the rock shelf. No distractions, just a few seabirds to keep you company.

Photo: Tourism Tasmania  
Address: Satellite Island, Tasmania  
Public Transport: Travel by chartered boat - organised by owner  
Phone: + 61 400 366 444  
Internet: <http://satelliteisland.com.au/>

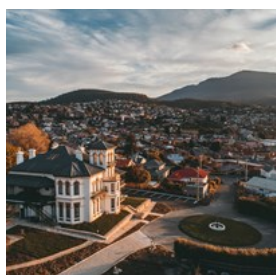
### MACq 01



Hobart's latest and instagrammable waterfront hotel, MACq 01. It's Australia's first storytelling hotel, and boy does it have some tales to tell. It has 114 stories to be exact - one for every room. Settle in to what MACq 01 refers to as "informal luxury".

Photo: Tourism Tasmania and Stu Gibson  
Address: 18 Hunter Street, Hobart  
Phone: +61 3 6210 7600  
Internet: <https://www.macq01.com.au/>

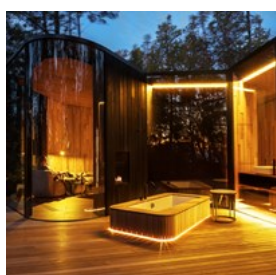
### Maylands Lodge



This grand mansion in Hobart's northern suburbs has been restored to its former glory as luxury boutique accommodation, with elaborately detailed arches and cornices, marble fireplaces and handcrafted staircases that lead to an atrium with 126 hand etched window panes. A market garden has been planted to provide garden-to-plate dining for guests at the intimate restaurant within the Victorian mansion walls.

Photo: Ali Davis  
Address: 40 Swanston St, New Town TAS 7008  
Phone: +61 3 6169 2777  
Internet: <https://maylandslodge.com.au/>  
Email: [info@maylandslodge.com.au](mailto:info@maylandslodge.com.au)

### Freycinet Lodge Coastal Pavilions



From the Freycinet Coastal Pavilions you can explore the Freycinet National Park on Tasmania's east coast more closely. Take a day

to explore Freycinet National Park on foot, then put your feet up in front of a warm fire, sink into the outdoor tub on the deck, or taste test a selection of local wine, whisky or gin back at the main Lodge.

Photo: Tourism Tasmania and RACT Destinations  
Address: Freycinet National Park, Coles Bay  
Phone: +61 3 6256 0278  
Internet: [https://www.freycinetlodge.com.au/en/accommodation/coastal\\_pavilion.html](https://www.freycinetlodge.com.au/en/accommodation/coastal_pavilion.html)  
Email: [reservations@freycinetlodge.com.au](mailto:reservations@freycinetlodge.com.au)

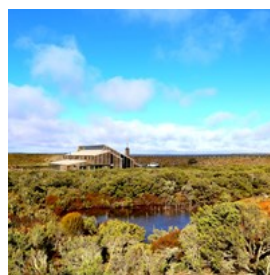
### Henry Jones Art Hotel



The Henry Jones Art Hotel, in Hobart, is an enthralling first-class boutique waterfront hotel. As Australia's first dedicated art hotel, the Henry Jones merges one of Tasmania's most significant industrial heritage sites - H. Jones and Co. Pty. Ltd. IXL Jam Factory - with a sleek design and contemporary Tasmanian artwork to create a sophisticated and deeply engaging accommodation experience on Hobart's waterfront.

Photo: Tourism Tasmania  
Address: 25 Hunter Street, Hobart TAS 7000  
Phone: +61 3 6210 7700  
Internet: <http://www.thehenryjones.com/>  
Email: [reservations@thehenryjones.com](mailto:reservations@thehenryjones.com)  
More Info: <https://www.discovertasmania.com.au/accommodation/henryjonesarthotel>

### Thousand Lakes Wilderness Lodge



Named in Lonely Planet's top three places to stay in the world in 2017 this isolated wilderness lodge provides respite from the raw and wild lakes area

of the Central Highlands. Here you can find some of the world's best stillwater fly fishing with wild brown stocks some of the best in the world.

Photo: Tourism Tasmania and Alice Hansen

Address: 1247 Lake Augusta Road, Liawenee, Central Highlands, Tasmania

Phone: +61 418 342 694

Email: <https://www.thousandlakeslodge.com.au/>

### Saffire Freycinet



Saffire Freycinet is Australia's premier luxury lodge. Located on the east coast, the lodge has private suites that look out to the Hazards mountain range of the Freycinet National Park.

There is a private spa, restaurant and complimentary experiences in the area.

Photo: Tourism Tasmania and Saffire Freycinet

Address: 2532 Coles Bay Road, Coles Bay

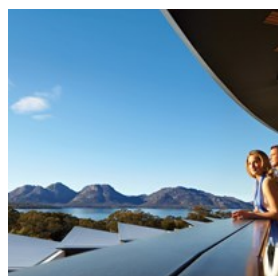
Public Transport: Travel by luxury car or helicopter transfer

Phone: +61 3 6256 7888

Internet: <https://saffire-freycinet.com.au/>

Email: [stay@saffire-freycinet.com.au](mailto:stay@saffire-freycinet.com.au)

### Resorts and Lodges



Tasmania's resorts and lodges are intimate, exclusive and located right on the edge of national parks or perched high on a cliff top

overlooking the ocean. Expect everything from personalised walking tours to wellbeing treatments and fresh food and wine.

Photo: Tourism Tasmania and Saffire Freycinet

Address: Tasmania

Internet: [www.discovertasmania.com.au](http://www.discovertasmania.com.au)

More Info: <https://www.discovertasmania.com.au/where-to-stay/resorts-and-lodges>

### Backpackers and Hostels



find.

Backpackers flock to Tasmania for great outdoor holiday experiences, with budget and boutique budget accommodation easy to

Photo: Tourism Tasmania

Address: Tasmania

Internet: [www.discovertasmania.com.au](http://www.discovertasmania.com.au)

More Info: <https://www.discovertasmania.com.au/where-to-stay/backpackers-and-hostels>

### Apartments



hotel and home, all rolled into one.

Choose from inner-city apartments or self-contained villas in historic and beachside towns, then settle in and enjoy the comforts of a

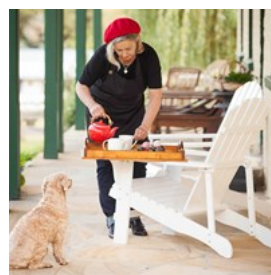
Photo: Tourism Tasmania

Address: Tasmania

Internet: [www.discovertasmania.com.au](http://www.discovertasmania.com.au)

More Info: <https://www.discovertasmania.com.au/where-to-stay/apartments>

### Bed and Breakfast



past.

Tasmania's B&B owners take pride in offering a genuine experience and an historic B&B is a great way to experience Tasmania's rich colonial

Photo: Tourism Tasmania

Address: Tasmania

Internet: [www.discovertasmania.com.au](http://www.discovertasmania.com.au)

More Info: <https://www.discovertasmania.com.au/where-to-stay/bed-and-breakfast>

## Holiday Houses and Cabins



Enjoy the space and comfort that only a house can provide, with rooms for guests and cooking facilities for dinner parties and festive occasions.

Photo: Tourism Tasmania

Address: Tasmania

Internet: [www.discovertasmania.com.au](http://www.discovertasmania.com.au)

More Info: <https://www.discovertasmania.com.au/where-to-stay/holiday-houses-and-cabins>

## Hotels and Motels



In Tasmania hotels and motels are far from what you might expect. You'll find everything from award-winning colonial mansions and coastal retreats to the contemporary elegance of a city waterfront hotel.

Photo: Tourism Tasmania

Address: Tasmania

Internet: [www.discovertasmania.com.au](http://www.discovertasmania.com.au)

More Info: <https://www.discovertasmania.com.au/where-to-stay/hotels-and-motels>

## Caravan and camping



Tasmania is one of the easiest and most unspoiled places to explore in a campervan, motorhome or caravan.

There are more than 50 caravan parks around the state, and cabin-style accommodation for those looking for an economical 'night away' from the confines of your vehicle. Campsites can be found in most parks and reserves, providing a true wilderness

experience on or off the beaten track.

Photo: Tourism Tasmania

Address: Tasmania

Internet: [www.discovertasmania.com.au](http://www.discovertasmania.com.au)

More Info: <https://www.discovertasmania.com.au/where-to-stay/caravan-and-camping>

## EVENTS



Tourism Tasmania

From cutting edge cultural festivals and world-class sporting events to country fairs and farmers markets, there's always something on in Tasmania. Find fresh food and a fresh perspective at festivals and events across the island.

## Autumn Events



Autumn is time for touring, walking, autumn colours and waking early for farmers markets to pick out local produce.

For the perfect mix this season, throw together some sword swallowers, winemakers, sheep dogs and supercars. Enjoy autumn in Tasmania from March to May.

Photo: Tourism Tasmania and Chris Crerar

Address: Tasmania

Internet: [www.discovertasmania.com.au](http://www.discovertasmania.com.au)



## Winter Events



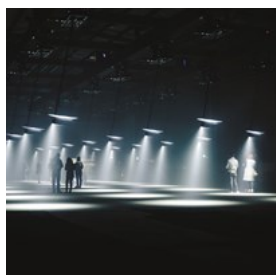
Winter is the season for alpine walks, hot tubs, open log fires and a glass of pinot. From the dark arts and ravenous feasts to wild music festivals and exhibitions inspired by uncharted lands. Prepare to have your imagination pushed to its limit and bring a healthy appetite... for everything. Enjoy winter June to August.

Photo: Tourism Tasmania

Address: Tasmania

Internet: [www.discovertasmania.com.au](http://www.discovertasmania.com.au)

## Dark Mofo



Rug up as Hobart's winter arts festival draws people out into the night to explore art and enjoy spiced gin around open fires. Dark Mofo unveils a stormy, wild and whimsical world, through evocative and interactive art installations, feasts, films and music. And for the insanely brave, join the locals in the nude, for a winter dip at the beach to celebrate the dawn of the Winter Solstice.

Photo: Tourism Tasmania

## Huon Valley Mid Winter Festival



Never heard of wassailing? An ancient pagan ritual where people sing to trees in an effort to bring good fortune to crops and scare evil nasties - that's fine. It's just one of the reasons Tasmanian's and curious visitors flock to the Huon Valley Mid Winter Festival. Others

come for the banging of drums, fireside music, feasting and the 'oh so delicious' craft ciders.

Photo: Tourism Tasmania

## Spring Events



From September to November, spring brings longer, warmer days and cool nights. It's the season of blooms in historic estate grounds, and triggers an explosion of trout in the highlands.

Photo: Tourism Tasmania

Address: Tasmania

Internet: [www.discovertasmania.com.au](http://www.discovertasmania.com.au)

## Summer Events



From December to February summer is the season of festivals and coastal escapes. The days are long and the weather is warm. There's super yachts coming in, polo, long table feasting, foraging, mountain biking and more. This summer is shaping up to be a cracker here in Tasmania.

Photo: Tourism Tasmania

Address: Tasmania

Internet: [www.discovertasmania.com.au](http://www.discovertasmania.com.au)

## TOURIST INFORMATION



Tourism Tasmania

Tasmania is a place of wild landscapes, friendly people, wonderful food and wine, and a haunting history. It's also Australia's smallest state and the most geographically diverse with over 40 per cent reserved as national parks and world heritage wilderness. Australia's only island state, access to Tasmania is by air and sea only.

### Airports



There are more direct flights departing major cities today than ever before. Regular flights depart from Melbourne, Sydney and Brisbane and

fly direct to Hobart and Launceston. Direct flights are also available from Melbourne to Wynyard (Burnie), Devonport, King and Flinders Island. Shuttle buses operate out of all Tasmanian airports.

Photo: Juan Garces

### Getting Around



With good roads, few freeways or motorways and scenic views wherever you go, getting around Tasmania is part of the fun. Although

Tasmania is a small state by Australian standards, it's actually the same size as Ireland, so don't underestimate the time it takes to get around. There are no train services in Tasmania so travellers rely on bus and coach and of course car-hire to get to and from our cities and regional centres. Coach tours offer a relaxing way of seeing the state. Specialised small escorted group touring is also available to cater for particular interests and the youth touring market.

Photo: Tourism Tasmania

### Spirit of Tasmania



Crossing Bass Strait to Tasmania is easy. Wind back to island time early, travelling by sea on the passenger ship, Spirit of Tasmania. Departing

from Melbourne and arriving in Devonport, this has the added benefit of letting you bring your own car and make the most of Tasmania's touring potential. Load your car up with luggage, golf clubs, fishing rods, camping equipment, and bikes - your epic island road trip begins as soon as you drive off the ship.

Phone: +61 3 6419 9320 (International)

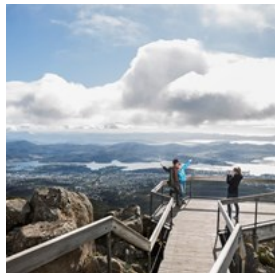
More info: [www.spiritoftasmania.com.au](http://www.spiritoftasmania.com.au)

Photo: Tourism Tasmania

Phone: +61 3 6419 9320 (International)

Internet: [www.spiritoftasmania.com.au](http://www.spiritoftasmania.com.au)

## Climate and Weather



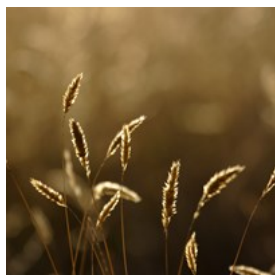
Tasmania has four distinct seasons with the warmest months being December to March.

Regardless of where you travel in Tasmania you

should be prepared for sudden, temporary deterioration in the weather, especially if bushwalking. Always carry additional warm clothing, including a waterproof outer layer.

Photo: Tourism Tasmania

## Quarantine Requirements



Tasmania has some of the world's most stringent quarantine regulations.

Please help us retain Tasmania's disease-free status by ensuring that

when you visit you are not carrying or importing any restricted items. The introduction of a pest or disease into Tasmania could have a significant negative impact on our natural environment. A pest or disease finding its way into our world-renowned primary production areas could result in the need to implement expensive control measures, together with a significant loss of markets, and potential cost to primary industries and our community.

Photo: Tourism Tasmania

### Population

In December 2018, Tasmania's population was 520,830

### Currency

Australian Dollar (AUD)

### Opening hours

Most businesses open 9am-5pm, check ahead when travelling regionally.

### Internet

[www.discovertasmania.com.au](http://www.discovertasmania.com.au)

## Newspapers

The Mercury Tasmania (Hobart and Tasmania)  
Sunday Tasmania (Tasmania)  
The Advocate (North West)  
The Examiner (North)

## Emergency numbers

Emergency (police, ambulance, fire brigade) dial 000

## Tourist information

<http://www.discovertasmania.com.au/>