



Wollongong

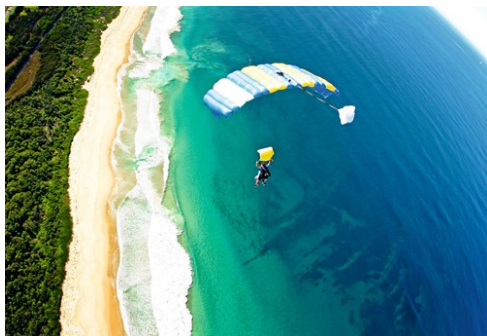
in collaboration with Destination NSW for Wollongong

Photo: Destination NSW for Wollongong



Destination NSW for Wollongong

The spectacular escarpment and beautiful beaches make Wollongong idyllic for outdoor adventures and fun. Just 80 km south of Sydney, Wollongong is NSW's third-largest city. Skydive, hang-glide and paraglide above the sparkling Pacific Ocean. Surfing, water skiing, sailing and fishing are popular, too. Play golf on picturesque courses or relax on a beach. Rent a bike and ride along 60 km of cycle paths or walk on rainforest trails. After all the outdoor activities, visit the city's splendid art gallery and enjoy quality cafés and restaurants.



Destination NSW for Wollongong



Destination NSW for Wollongong

QUIZ

*What Type of Traveller
Are You Based on
Your Travel IQ?*

TAKE THE QUIZ

Top 5



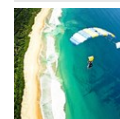
Beautiful Beaches

Experience Wollongong's gorgeous beaches along a splendid stretch of coast. ...



Sea Cliff Bridge

A marvel of engineering, the Sea Cliff Bridge is a highlight along the magni...



Skydive the Beach

For an unforgettable experience, skydive above the beach and ocean in Wollon...



Symbio Wildlife Park

Symbio Wildlife Park, near the start of the Grand Pacific Drive, is home to ...



Just Cruisin' Motorcycle Tours

Cruise through Wollongong and its surrounds on a chauffeured trike, sidecar ...



TOP 5



Destination NSW for Wollongong

Discover the unspoilt natural beauty of Wollongong by relaxing on the fine white sands of its beaches, enjoying spectacular panoramic views by driving on coastal roads, or from the air by skydiving and hang-gliding. And meet native animals including koalas, kangaroos, dingoes and water dragons in an enthralling wildlife park.

Beautiful Beaches



Experience Wollongong's gorgeous beaches along a splendid stretch of coast. From Stanwell Park in the north to Windang in the south, the

Wollongong area is blessed with many beaches. Coalcliff Beach attracts families to its rock pool, uncrowded Coledale has a relaxed vibe and Austinmer is longtime favourite because of its rock pools and ocean baths. The most popular beaches are North Wollongong Beach and Wollongong City Beach. Both have great waves as well as wading pools, cycle paths, barbecues and parks offering respite from the Sun.

Photo: Destination Wollongong

Internet: www.visitnsw.com/destinations/south-coast/wollongong-and-surrounds/beaches

Sea Cliff Bridge



A marvel of engineering, the Sea Cliff Bridge is a highlight along the magnificent coastal road of the Grand Pacific Drive, one of Australia's great touring routes. Visitors can stop here to break up their road journey, stretch their legs and take in majestic panoramic views across the Pacific Ocean. It's also a great viewing platform for migrating whales heading north and south during the migrating season between June and November.

Photo: Sea Cliff Bridge

Address: Lawrence Hargrave Drive, Coalcliff, NSW 2508

Internet: www.visitnsw.com/destinations/south-coast/wollongong-and-surrounds/stanwell-park/attractions/sea-cliff-bridge

Skydive the Beach



For an unforgettable experience, skydive above the beach and ocean in Wollongong. Securely attached to your experienced tandem instructor, you'll be guided through the entire skydive. Your adventure begins with a safety briefing followed by a scenic plane ride. As the excitement builds, your instructor will prepare you for the countdown and together you'll make the jump from more than 4 km above the beautiful coast. After you freefall at more than 200 km/h for a minute, your instructor will pull the chute and you'll soar serenely for 5-7 minutes before landing.

Photo: Skydive Sydney - Wollongong

Address: Stuart Park, North Wollongong, NSW 2500

Phone: +61 2 4225 8444 or 1300 663 634 (within Australia)

Internet: <http://www.visitnsw.com/things-to-do/tours/skydive-sydney-wollongong>

Symbio Wildlife Park



Symbio Wildlife Park, near the start of the Grand Pacific Drive, is home to hundreds of creatures and offers daily animal shows and enthralling wildlife experiences. Reserve an animal encounter to pat a koala, feed a meerkat and join keepers and dingoes on their daily walk around the park. You can also see water dragons, Tasmanian devils, kangaroos and echidnas, among the many other native animals in the sanctuary. An impressive collection of reptiles – big and small – slither and crawl, and you can enjoy a daily reptile show.

Photo: Kevin Fallon - Symbio Wildlife Park

Address: 7 - 11 Lawrence Hargrave Drive, Helensburgh, NSW 2508

Phone: +61 2 4294 1244

Internet: www.visitnsw.com/destinations/south-coast/wollongong-and-surrounds/stanwell-park/attractions/symbio-wildlife-park

Just Cruisin' Motorcycle Tours



Cruise through Wollongong and its surrounds on a chauffeured trike, sidecar or solo motorcycle. Just Cruisin' tours specialise in showcasing Wollongong's beautiful coastline including the Sea Cliff Bridge and the Grand Pacific Drive. Enjoy a sensory experience: feel the wind in your face, smell the sea breeze, hear the motor, and take in the spectacular natural scenery all around you.

Photo: Destination Wollongong

Address: Stanwell Tops, NSW 2508

Phone: +61 2 4294 2598

Internet:

www.visitnsw.com/things-to-do/tours/just-cruisin-harley-tours

THE CITY



Destination NSW for Wollongong

Wollongong is delightful drive south of Sydney. You can drive to the city in an hour or take a little longer and follow the winding Grand Pacific Drive around the iconic Sea Cliff Bridge. With superb beaches, accommodation options and al fresco dining by the beach, Wollongong is a great base for exploring the NSW South Coast.

Take in the stunning panorama of the escarpment and coast from Bald Hill Lookout at Stanwell Tops, a popular place for hang-gliding. Cycleways line the coast, so rent a bike and explore Wollongong under brilliant blue skies, or explore the bush on walking trails.

Walk in the forest canopy at Illawarra Fly Treetop Adventures in the escarpment and meet native animals at Symbio Wildlife Park. Thrill-seekers can skydive, hang-glide or paraglide, and take a joyride on a motorcycle into the fragrant bushland and along the sparkling coast.

Stop at lovely Nan Tien Buddhist Temple with its pretty gardens to restore your inner peace. And don't miss Wollongong City Gallery's fascinating exhibition of Aboriginal and Torres Strait Islander art.

DO AND SEE



Anson Smart/Destination NSW for Wollongong

A holiday or a weekend escape in Wollongong offers beautiful natural scenery, exciting sports and adventure activities, plus world-class cultural attractions and events.

Aerial Adventures



Enjoy a bird's-eye view of the beautiful coast on an exhilarating aerial adventure. Wollongong is renowned for thrilling air adventures including skydiving, hang-gliding and paragliding. Steep cliffs rising sharply from the coast combined with strong air currents make it a popular destination for hang-gliding and paragliding - Bald Hill Lookout at Stanwell Tops is an acclaimed international site. Soar above cliffs and ocean as you tandem glide before landing on Stanwell Park Beach.

Photo: Sydney Hang Gliding Centre

Internet: www.visitnsw.com/destinations/south-coast/wollongong-and-surrounds/adventure

Bald Hill Lookout



Bald Hill in Stanwell Park is one of Australia's most popular lookouts, offering spectacular and sweeping views of the iconic Sea Cliff Bridge, splendid coastline and vast Pacific Ocean. The area is internationally acclaimed for hang-gliding and paragliding. It was in Stanwell Park that Lawrence Hargrave, an Australian pioneer of flight, experimented with box kites and made a successful flight on 12 November, 1894.

Photo: Bald Hill Lookout

Address: Lawrence Hargrave Drive, Otford, NSW 2508

Phone: 1800 240 737 (within Australia)

Internet: <https://www.visitnsw.com/destinations/south-coast/wollongong-and-surrounds/stanwell-park/attractions/bald-hill-lookout>

Grand Pacific Drive



Explore Wollongong and beyond on a leisurely drive on one of Australia's spectacular touring routes. The Grand Pacific Drive begins just south of Sydney at the Royal National Park, among the oldest national parks in the world, and travels through temperate rainforest to Stanwell Tops, then down to the famous Sea Cliff Bridge and along the coastline to Wollongong, Shellharbour, Kiama and Berry.

Photo: Tourism Wollongong

Internet: www.visitnsw.com/things-to-do/drives-and-road-trips/grand-pacific-drive

Illawarra Fly Treetop Adventures



Enjoy one of Australia's best treetop experiences and soar on the highest zip-line in the country. High above the rainforest, the treetop walk features two gently swaying cantilevered arms and a central tower raised nearly 50 metres from the forest floor. Positioned 710 metres above sea level, the magnificent views take in the rainforest floor to the canopy and out to the Pacific Ocean.

Photo: Illawarra Fly Treetop Adventures

Address: 182 Knights Hill Road, Knights Hill, NSW 2577
Phone: +61 2 4885 1010 or 1300 362 881 (within Australia)
Internet: <https://www.visitnsw.com/destinations/south-coast/kiama-area/jamberoo/attractions/illawarra-fly-treetop-adventures>

Jamberoo Action Park

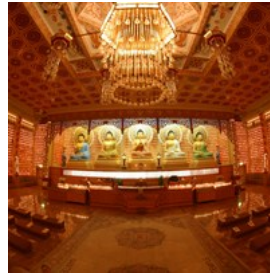


Located just 30 minutes south of Wollongong, this popular water theme park is set among 40 hectares of gardens and parklands. It's the perfect setting to relax or join the kids on a huge range of water slides and attractions. Home of the Funnel Web, the longest, most exhilarating water thrill ride built in the world, or splash about in Banjo's Billabong, the largest aqua play structure in the Southern Hemisphere. You can also ride rafts along Rapid River and slide down Surf Hill.

Photo: Wade Stewart, Atmosphere Productions - Jamberoo Action Park

Address: 1215 Jamberoo Road, Jamberoo, NSW 2533
Phone: +61 2 4236 0114
Internet: www.visitnsw.com/destinations/south-coast/kiama-area/jamberoo/attractions/jamberoo-action-park

Nan Tien Temple



Visit or stay at Nan Tien Temple, the largest Buddhist temple in the Southern Hemisphere. Admire the temple's beautiful mix of eastern and western influences and explore the tranquil gardens and lotus ponds. Nan Tien also offers many spiritual experiences including self-development talks and Buddhist meditation retreats. Pilgrim Lodge is a 100-room facility, which is open all year round and located in the grounds of the Temple.

Photo: Nan Tien Temple

Address: 180 Berkeley Road, Berkeley, NSW 2506
Phone: +61 2 4272 0600
Internet: <https://www.visitnsw.com/destinations/south-coast/wollongong-and-surrounds/wollongong/attractions/nan-tien-temple>

Science Space



Wollongong's most visited indoor attraction, the Science Centre and Planetarium is a major hands-on science venue. Suitable for all ages, attractions include two floors of exciting interactive exhibits, a science theatre, and the amazing and immersive planetarium.

Photo: Science Space

Address: 60 Squires Way, North Wollongong, NSW 2500
Phone: +61 2 4286 5000
Internet: <https://www.visitnsw.com/destinations/south-coast/wollongong-and-surrounds/wollongong/attractions/science-space>

WIN Sports and Entertainment Centres



The WIN Sports and Entertainment Centres are multipurpose venues, hosting various concerts, conventions, exhibitions, and indoor and outdoor sporting events. Watch A-League football matches and national basketball games, or see international musicians and comedians.

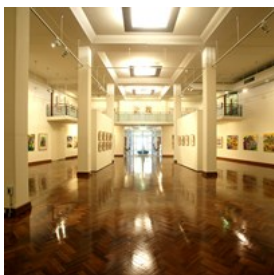
Photo: Lynley Coles

Address: Corner of Crown and Harbour Streets, Wollongong, NSW 2500

Phone: +61 2 4220 2800

Internet: <https://www.visitnsw.com/destinations/south-coast/wollongong-and-surrounds/wollongong/attractions/win-sports-and-entertainment-centres>

Wollongong Art Gallery



A leading regional art gallery with a schedule of high quality exhibitions and public programs. The gallery houses an important collection of

Australian, Aboriginal and Asian art. The permanent collection not only documents regional histories and art practices, but also reflects developments and issues in art of local, national and international relevance.

Photo: Wollongong Art Gallery

Address: Corner of Kembla and Burelli Street, Wollongong, NSW 2500

Phone: +61 2 4228 8500

Internet: www.visitnsw.com/destinations/south-coast/wollongong-and-surrounds/wollongong/attractions/wollongong-art-gallery

Wollongong Botanic Garden



Wollongong Botanic Garden is a place of natural beauty where people can relax and learn more about plants and horticulture. The garden offers an exciting array of activities and experiences for visitors of all ages. These range from guided walks and community workshops that focus on environmental sustainable practices through to band recitals, theatrical entertainment, and sunset cinema screenings.

Photo: Wollongong Botanic Garden

Address: Murphys Avenue, Gwynneville, NSW 2500

Phone: +61 2 4227 7667

Internet: <https://www.visitnsw.com/destinations/south-coast/wollongong-and-surrounds/wollongong/attractions/wollongong-botanic-garden>

DINING



Destination NSW for Wollongong

From fine dining at award-winning restaurants to relaxed cafés, enjoy delicious meals overlooking the Pacific Ocean in delightful venues. Talented chefs create mouth-watering dishes using fresh seafood and seasonal produce.

Lagoon Restaurant



This multi award-winning restaurant was established in 1986.

Situated by the sea where Fairy Creek Lagoon meets the Pacific Ocean,

Lagoon Restaurant offers spectacular views at its waterfront location. The restaurant's private dining rooms feature floor to ceiling glass doors that open up onto al fresco terraces.

Photo: Lagoon Restaurant

Address: Stuart Park, North Wollongong, NSW 2520

Phone: +61 2 4226 1677

Internet: <https://www.visitnsw.com/destinations/south-coast/wollongong-and-surrounds/wollongong/food-and-drink/lagoon-restaurant>

Mount Kembla Village Hotel



Mount Kembla Hotel is a heritage listed building and is the oldest weatherboard hotel in the Illawarra. The scenic views of the surrounding

escarpment and award winning restaurant make it a favourite venue for many tourists and artists of the local area.

Mount Kembla Village Hotel specialises in Gastro Pub style cuisine, sourcing only the freshest local produce around.

Offering Mid-week Lunch and Dinner Specials Tuesday to Thursday.

There also is a boutique Australian wine list, with wines from the best growing regions. The hotel provides live music Friday nights as well as every Sunday. With its friendly locals and its comfortable family friendly surrounds your

experience is sure to be a pleasurable one.

Photo: Mount Kembla Village Hotel

Address: 274 Cordeaux Road, Mount Kembla, NSW 2526

Phone: +61 2 4271 1119

Internet: <https://www.visitnsw.com/destinations/south-coast/wollongong-and-surrounds/wollongong/food-and-drink/mount-kembla-village-hotel>

Diggies



A local Wollongong institution, Diggies dishes up quality food in a relaxed café setting, with views of the magnificent Pacific Ocean.

Overlooking a thin curl of fine sand on a busy strip of beachfront, you'll find the white facade of Diggies hemmed in by beachgoers.

Photo: Diggies

Address: 1 Cliff Road, Wollongong, NSW 2500

Phone: +61 2 4226 2688

Internet: <https://www.visitnsw.com/destinations/south-coast/wollongong-and-surrounds/wollongong/food-and-drink/diggies>

Steamers Bar and Grill



Steamers Bar and Grill holds one of the most stunning views of City Beach and Wollongong lighthouse. The restaurant was inspired

by the history of the precinct; when the colony of the Illawarra was first settled, excess fresh produce grown was transported to what is known today as Belmore Basin, before being loaded onto steamships that sailed to feed the growing population of Sydney. The character of the menu, being fresh, organic, local produce and the nautical styling of the décor are both a nod to this industrial period.

Steamers Bar and Grill delivers a great communal dining experience comparable to no other in Wollongong. From dry-aging and wood smoking their organic, OBE beef in house to the exemplary quality of the produce used through the dishes, Steamers Bar and Grill are raising the bar on taste, authenticity and service.

Photo: Steamers Bar and Grill

Address: 1 Marine Drive, Wollongong, NSW 2500

Phone: +61 2 4229 6895

Internet: <https://www.visitnsw.com/destinations/south-coast/wollongong-and-surrounds/wollongong/food-and-drink/steamers-bar-and-grill>

Collegians



Collegians Rugby League Football Clubs have been leading clubs in the Illawarra area for over 50 years. With four great locations, Wollongong,

Balgownie, Figtree and Port Kembla, they're sure to have something to entertain you with all days of the week!

Relax and enjoy Collegians superior and friendly service whilst dining in one of their many food outlets. Kitchen on Charlotte offers modern bistro cuisine the whole family will enjoy or try Factory, specialising in steak, pizza and ribs and Six Fish has fresh seafood that changes daily. If you're after something lighter Much Ado About Coffee has sweet treats, lights meals and coffee available all day.

Collegians bars have over 70 beers across its bottled and tap range as well as a 40 plus wine list. The Wollongong City club is also home to a craft cider bar with six on tap to choose from. Open seven days a week.

Photo: Collegians

Address: 3A Charlotte Street, Wollongong NSW 2500

Internet: <https://www.visitnsw.com/destinations/south-coast/>

wollongong-and-surrounds/wollongong/food-and-drink/collegians

Altitude 1148



Altitude 1148 is a chic, contemporary restaurant that serves modern Australian cuisine within the Southern Gateway Centre at Bulli Tops.

Floor-to-ceiling glass doors open onto a balcony affording commanding coastal views of the gorgeous region and Pacific Ocean.

Photo: Altitude 1148

Address: 599 Princes Highway, Bulli Tops, NSW 2516

Phone: +61 2 4267 5443

Internet: <https://www.visitnsw.com/destinations/south-coast/wollongong-and-surrounds/bulli/food-and-drink/altitude-1148>

The Illawarra Brewery



Located opposite Wollongong City Beach, The Illawarra Brewery is a bar and grill dedicated to relaxing, drinking, and indulging in modern

Australian cuisine. The brewery offers a large collection of award-winning, handcrafted beers, many made locally in the region.

Photo: The Illawarra Brewery

Address: WIN Entertainment Centre, Corner of Crown and Harbour Streets, Wollongong NSW 2500

Phone: +61 2 4220 2854

Internet: <http://www.visitnsw.com/destinations/south-coast/wollongong-and-surrounds/wollongong/food-and-drink/the-illawarra-brewery>

EVENTS



Destination NSW for Wollongong

Wollongong enjoys an exciting range of events throughout the year. Experience a diverse variety of music in a vibrant community atmosphere, or check out the city's immense range of fitness events. Visit the WIN Sports and Entertainment Centres to see national sporting matches and international performances in a great venue by the Pacific Ocean.

Eat Street Bulli



Eat Street Bulli is a street style food market offering unique and culturally diverse food offerings with music, entertainment and a licensed bar. The event is family friendly and there are activities for children to enjoy such as a jumping castle and face painting.

Photo: Eat Street Bulli

Address: Bulli Showgrounds Grevillea Park Road, Bulli Showgrounds, Bulli NSW 2516

Phone: +61 2 4268 5927

Internet: <https://www.visitnsw.com/destinations/south-coast/wollongong-and-surrounds/bulli/events/eat-street-bulli-0>

The Illawarra Festival of Wood



The Illawarra festival of Wood is a modern reimagining of the traditional wood festival. The festival will be showcasing local and regional wood artisans as well as celebrating a variety of wood related crafts and forest industries.

The wood related industries would be spoon carving, knife makers, traditional toolmakers, timber surfboard makers, woodturning, basket weaving, jewellery, floristry, sculpture and timber milling.

Each stall will have a wood artisan demonstrating their craft. The public will be able to learn, reconnect, discover and discuss woodwork from these skilled makers. Lucas milling of timber, chainsaw carving and wood chopping will be able to be observed.

An extensive range of hands-on workshops will be held over the three days. These workshops will be spoon carving, milk stool making, possum boxes and solitary bees nests.

The workshops will be three hours in length and two age categories: Children eight to fourteen years as well as 14 and over. Free workshops will be happening over the weekend in chopstick making for everyone and bush critters for children.

Photo: The Illawarra Festival of Wood

Address: Bulli Showground / Raceway, Princes Highway, Bulli NSW 2516

Phone: +61 401 258 422

Internet: <https://www.visitnsw.com/destinations/south-coast/wollongong-and-surrounds/bulli/events/the-illawarra-festival-wood>

Illawarra Folk Festival



The festival presents around 150 performers over four days featuring some of the best national and international traditional folk acts. Ride the Green Music Train from Sydney to Bulli and enjoy other festival highlights including a two-day intensive folk school and the popular Lunch Italian Style and Tripe Dinner.

Photo: Illawarra Folk Festival

Address: Bulli Showground and Racing Complex, Bulli, NSW 2516

Phone: 1300 887 034

Internet: <https://www.visitnsw.com/destinations/south-coast/wollongong-and-surrounds/bulli/events/illawarra-folk-festival>

TriTheGong Triathlon Festival



The splendid harbour precinct of Wollongong comes alive each March with a festival of fitness, health and family fun that offers the opportunity to participate or enjoy the spectacle of the sport. The festival offers races for a wide range of ages and abilities from a 1 km ocean swim, to the popular beginners Enticer triathlon, through to Olympic distances. Entries are available to individuals or teams.

Photo: Wollongong Triathlon Festival - Elite Energy

Address: Wollongong Harbour, Marine Drive, Wollongong, NSW 2500

Phone: +61 2 4423 7775

Internet: <https://www.visitnsw.com/destinations/south-coast/wollongong-and-surrounds/wollongong/events/peoplecare-trit-hegong>

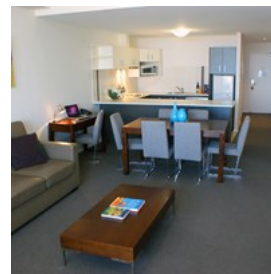
ACCOMMODATION



Destination NSW for Wollongong

Enjoy a great range Wollongong accommodation options. You'll find many places to stay within walking distance of the beach and close to shops, restaurants and other attractions. Choose from a selection of modern self-contained apartments, cosy bed & breakfasts, accessible camping spots, youth hostels, hotels and motels.

Mantra Wollongong



Mantra Wollongong is conveniently located in the CBD within close proximity to Wollongong Hospital, all major public transport as well as the city's main shopping and dining precinct. Whether you choose a One or Two Bedroom Apartment, you can enjoy air-conditioning, Foxtel and tea and coffee making facilities. In the kitchen and laundry there's everything you'd expect and many rooms offer ocean views and balconies. Enjoy the convenience of free on-site parking, wireless internet, a fully-equipped gymnasium and many more elements that go together to make your stay in Wollongong perfect. The property also features on-site meeting spaces and concierge services.

Photo: Mantra Wollongong

Address: 6 - 10 Gladstone Avenue, Wollongong NSW 2500
Phone: +61 2 4222 4000
Internet: <https://www.visitnsw.com/destinations/south-coast/wollongong-and-surrounds/wollongong/accommodation/mant-ra-wollongong>

Nan Tien Temple Pilgrim Lodge

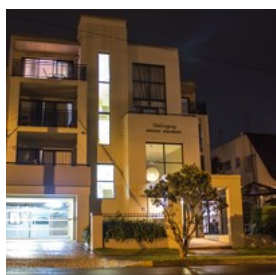


Pilgrim Lodge is a truly unique, 100 room accommodation facility in Wollongong, set amongst the tranquillity of the Nan Tien Temple grounds, site of the largest Buddhist Temple in the Southern Hemisphere. The lodge overlooks the lotus pond, Peaceful Temple, splendid gardens, the beautiful rolling hills and famous escarpment of the Illawarra.

Ideal for general guests, overnight functions/conferences, group bookings, or special group packages. Each level has a guest tea room for making tea and coffee. Guests can also book at the Pilgrim Lodge for dinner and breakfast which is held in the Dining Hall. As well as accommodation, Pilgrim Lodge also hosts a meeting/business room for guests and/or private hire; laundry facilities, lounge, and study room.

Photo: Nan Tien Temple Pilgrim Lodge
Address: 180 Berkeley Road, Berkeley NSW 2506
Phone: +61 2 4272 0500
Internet: <https://www.visitnsw.com/destinations/south-coast/wollongong-and-surrounds/wollongong/accommodation/nan-tien-temple-pilgrim-lodge>

Wollongong Serviced Apartments



Conveniently located in the heart of the city, Wollongong Serviced Apartments offer the very best in luxury serviced one and two bedroom

apartments.

Only a short stroll from the Wollongong CBD, magnificent beaches and harbour, shopping, golf course, theatre, WIN Entertainment Centre and cafes.

It is also a multi tourism award winner making it the place to stay in Wollongong.

The property features 21 one and two bedroom fully self-contained luxury apartments, Wi-Fi, Foxtel television, fully equipped kitchen and laundry, barbecue facilities and secure undercover parking.

There are also conference rooms available for hire through their sister company Diamond Offices in the Wollongong CBD.

Photo: Wollongong Serviced Apartment
Address: 54 Kembla Street, Wollongong NSW 2500
Phone: +61 2 4254 4254
Internet: <https://www.visitnsw.com/destinations/south-coast/wollongong-and-surrounds/wollongong/accommodation/wollongong-serviced-apartments>

Boat Harbour Motel



The Boat Harbour Motel and Anchorage Restaurant are located in the heart of Wollongong, just an easy drive or train ride from Sydney. The

motel offers all the comforts and facilities required to make your stay memorable.

Situated opposite the main cycle way and only a three minute walk to the main beaches, as well as convenient access to the city's shopping precinct, makes this an ideal 'home away from home' for holiday makers and business guests alike.

The property features a modern function room which is available for conferences, seminars, weddings or any special occasion for up to 60 people.

There are 42 units on three levels with beach and harbour views. Interconnecting rooms are also available.

Room features include Foxtel, reverse cycle air-conditioning, balcony, free wi-fi, and free off-street parking.

Photo: Boat Harbour Motel

Address: Corner Campbell and Wilson Streets, Wollongong NSW 2500

Phone: +61 2 4228 9166

Internet: <https://www.visitnsw.com/destinations/south-coast/wollongong-and-surrounds/wollongong/accommodation/boat-harbour-motel>

Adina Apartment Hotel



The Adina Apartment Hotel is in the heart of Wollongong's city centre, with City Beach, Crown Street Mall, the WIN Entertainment Centre

and a beachside golf course only a stroll away. You'll be perfectly positioned to experience all Wollongong has to offer, whether you're visiting for business or leisure.

Photo: Adina Apartment Hotel Wollongong

Address: 19 Market Street, Wollongong, NSW 2500

Phone: +61 2 4250 5000 or 1300 633 462 (within Australia)

Internet: <https://www.visitnsw.com/destinations/south-coast/wollongong-and-surrounds/wollongong/accommodation/adina-apartment-hotel-wollongong>

Best Western City Sands



Best Western City Sands offers one or two-bedroom apartment-style accommodation with large private balconies, spacious living areas and spectacular views of the ocean or escarpment. Property features

include a beachside 18-hole links-style golf course and Rory's Saltwater Grill, a restaurant.

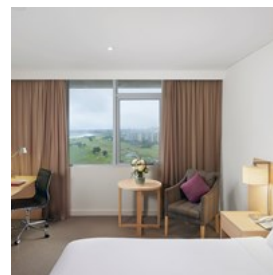
Photo: Best Western City Sands

Address: Corner of Bank and Corrimal Street, Wollongong, NSW 2500

Phone: +61 2 4222 3111

Internet: <https://www.visitnsw.com/destinations/south-coast/wollongong-and-surrounds/wollongong/accommodation/best-western-city-sands>

Sage Hotel Wollongong



Experience and delight in the simplicity of Sage Hotel Wollongong. The hotel is only a short walk to Wollongong City Beach, vibrant

restaurants and cafes, and fabulous shopping at Wollongong Central and Crown St Mall, making it perfectly suited for both business and leisure. You can enjoy the relaxed coastal vibe as well as wine and dine in the city centre.

Photo: Sage Hotel Wollongong

Address: 60 - 62 Harbour Street, Wollongong, NSW 2500

Phone: +61 2 4201 2111 or 1800 303 186 (within Australia)

Internet: www.visitnsw.com/destinations/south-coast/wollongong-and-surrounds/wollongong/accommodation/sage-hotel-wollongong

20 On The Beach



If you are looking for the perfect beach accommodation in Woonona, this home offers beautiful views, modern interiors, plenty

of space and a relaxing pool. A spacious family home located just across the road from Woonona Beach, it contains everything you need to enjoy a blissful holiday. Set within a fantastic location with the sea, city delights, village

boutiques, cafes and restaurants all at your door step.

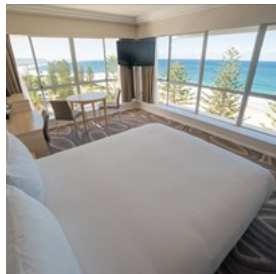
Photo: Emerald & Aqua

Address: 20 Beach Drive, Woonona Woonona, NSW 2517

Phone: +61 2 4207 9988

Internet: <https://www.visitnsw.com/destinations/south-coast/wollongong-and-surrounds/bulli/accommodation/20-the-beach>

Novotel Wollongong Northbeach



On the water's edge, just footsteps from the fine white sands of North Wollongong Beach, the award-winning Novotel Wollongong Northbeach

offers stunning ocean views and spacious light-filled rooms. The hotel is in Wollongong's scenic Blue Mile precinct, close to restaurants and cafés, local attractions and the city centre.

Photo: Michael Boyle Photography - Novotel Wollongong Northbeach

Address: 2 - 14 Cliff Road, North Wollongong, NSW 2500

Phone: +61 2 4224 3111

Internet: <https://www.visitnsw.com/destinations/south-coast/wollongong-and-surrounds/wollongong/accommodation/novotel-wollongong-northbeach>

Quality Suites Pioneer Sands



Quality Suites Pioneer Sands deluxe serviced one and two-bedroom apartments feature generous open plan living areas which flow to

outdoor entertaining terraces. Many apartments offer gorgeous hinterland or district views. Enjoy access to pool, spa and gym facilities, just five minutes from Wollongong's city centre.

Photo: Quality Suites Pioneer Sands

Address: 19 Carters Lane, Wollongong, NSW 2500

Phone: +61 2 4252 1111

Internet: <https://www.visitnsw.com/destinations/south-coast/wollongong-and-surrounds/wollongong/accommodation/quality-suites-pioneer-sands>

TOURIST INFORMATION



Destination NSW for Wollongong

Wollongong and its beautiful beaches are conveniently located 80 km south of Sydney. Travelling to Wollongong is easy by motor vehicle or public transport. With public transport there are many options for exploring the city and surrounding areas.

Airport



Sydney Airport is the closest airport to Wollongong. Connecting links between the airport and Wollongong are provided by rail and

road.

By road:

It's an easy hour-long drive to Wollongong. Follow the signs from the airport towards Wollongong and Rockdale to get to the Princes Highway, and from there follow the road and directional signage south to Wollongong.

By Rail:

For a direct link to Wollongong, catch an airport train to Wollongong and then change platforms

for a train on the South Coast Line to Wollongong. Peak hour trains to Wollongong sometimes skip Wolli Creek, in which case you can change trains at Hurstville for a train to Wollongong. Travel time is less than 2 hours.

Photo: Juan Garces

Public transport



Wollongong Train Station lies in the heart of town on the South Coast Line of the Transport NSW intercity network. Many surrounding beaches are

also accessible by train, including Stanwell Park, Wombarra, Coledale, Austinmer and Thirroul, which all have an hourly service. Travel further south on the train line to discover other beautiful coastal towns such as Shellharbour, Kiama and Gerringong, as well as the hinterland village of Berry.

Free Gong Shuttle Bus:

Wollongong's free Gong Shuttle Bus makes it easy to get around the city.

The service operates in both directions on a loop from Wollongong Station to Wollongong University via Wollongong Hospital, Burelli Street and the Innovation Campus.

On weekdays the shuttle operates every 10 minutes between 7am and 6pm and every 20 minutes from 6pm to 10pm. On weekends the shuttle operates every 20 minutes between 8am and 6pm.

The route numbers for the Gong Shuttle are 55A and 55C.

Photo: Pierre-Luc Auclair

Internet: www.transportnsw.info

Telephone



Country Code: (+61) Area Code: (02)

Photo: Jardson Almeida

Electricity



220-240V

Photo: Stirling Tschan

Population

Approximately 200,000.

Currency

Australian Dollar (AUD) \$1 = 100 cents

Opening hours

General city shopping hours are Monday to Friday 9am - 5.30pm with late night shopping on Thursday until 9pm. Most shops are open Saturday from 9am - 4pm and Sunday 10am - 4pm.

Internet

www.visitnsw.com/destinations/south-coast/wollongong-and-surrounds/wollongong

Newspapers

The Illawarra Mercury (daily)
The Wollongong Advertiser (weekly)
Sydney Morning Herald (NSW)
The Daily Telegraph (NSW)
The Australian (National)

Emergency numbers

Police, Ambulance, Fire 000

Tourist information

Southern Gateway Centre
Address: Princes Motorway, Bulli Tops, NSW 2516
Phone: +61 2 4267 5910. Toll Free: 1800 240 737
Hours: Open daily 9am - 5pm. Closed Christmas Day.
www.visitnsw.com/visitor-information-centres/southern-gateway-centre

iHUB

Address: 93 Crown Street, Wollongong, NSW 2500

Phone: +61 2 4267 5910 Toll Free: 1800 240 737
Open: 7 days a week Mon - Saturday 9am - 5pm, Sunday &
Public Holidays 10am - 4pm. Closed Christmas Day, New
Years Day and Good Friday.
www.visitnsw.com/visitor-information-centres/wollongong-central-visitor-information-centre