



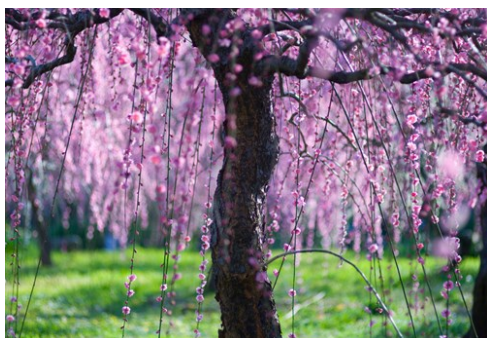
# Nagoya

Photo: Sean Pavone/Shutterstock.com



David Quixley/Shutterstock.com

As testified by epic movies like Shogun and Ran, Nagoya City is pure history, centred around Nagoya Castle. It was Expo 2005 that put Nagoya on the world map. Post-Expo, Nagoya is positioning itself both as a centre for hi-tech industries and as a tourist gateway. Toyota Cars, old and new famed ceramics, Shinto shrines and Buddhist temples, dolls and robots castles, feudal villas and farmhouses pearls, and a plethora of shopping and nightlife spots await you in this not-so-obvious choice of a Japanese destination.



Heaven on earth/Shutterstock.com



Sean Pavone/Shutterstock.com

## QUIZ

*What Type of Traveller  
Are You Based on  
Your Travel IQ?*

**TAKE THE QUIZ**

### Top 5



#### Nagoya Castle

Nagoya Castle is where the Tokugawa shogun made their home for over 250 year...



#### Atsuta Shrine

The Atsuta Shrine is one of the most important sacred places in Japan, ranki...



#### Nagoya TV Tower

Nagoya TV Tower, built in 1954, is the oldest broadcasting radio in Japan, ...



#### Toyota Commemorative Museum...

The huge Toyota Museum is a must-visit for all those interested



#### Higashiyama Zoological and...

Higashiyama Zoological and Botanical Garden is a vast green expanse right in...



## THE CITY



*vichie81/Shutterstock.com*

Nagoya, the fourth largest metropolis of Japan with more than two million inhabitants, is known worldwide for being a manufacturing city, even though it has nothing to envy of siblings such as Osaka or even Tokyo.

The city has plenty of bars, cafes and shopping malls where to end your day after long visits to the temples or Nagoya Castle, or perhaps after hiking through the Nakasendo Kiso Valley.

## DO & SEE



*image focus/Shutterstock.com*

Let the city guide you. You don't have to put much effort into finding what to do or where to go in a city like Nagoya. Kick off your trip from Nagoya Castle and end it walking the Nakasendo Kiso Valley.

## Nagoya Castle



Nagoya Castle is where the Tokugawa shogun made their home for over 250 years up until 1868, the year in which Japan's partial isolation from the West came to an end with the beginning of the Meiji period. The castle was nearly destroyed in bombing raids of 1945 and authentically rebuilt only in 2018.

Photo: *cowardlion/Shutterstock.com*

Address: 1-1 Honmaru, Naka-ku, Nagoya

Opening hours: Open daily from 9 a.m. to 4.30 p.m., except from December 29 to January 1

Phone: +81 52 231 1700

Internet: [www.nagoyajo.city.nagoya.jp](http://www.nagoyajo.city.nagoya.jp)

More Info: Entrance to Nagoya Castle until 4:00 p.m.

## Atsuta Shrine



The Atsuta Shrine is one of the most important sacred places in Japan, ranking second only to the Ise Shrine. It stores one of the so-called Imperial regalia, the sacred sword Kusanagi and is well known for its peaceful and relaxing atmosphere.

Photo: *Cowardlion/Shutterstock.com*

Address: 1-1-1 Jingu, Atsuta-ku, Nagoya

Phone: +81 52 671 4151

Internet: [www.atsutajingu.or.jp/en](http://www.atsutajingu.or.jp/en)

More Info: Free parking for visitors

### Nagoya TV Tower



Nagoya TV Tower, built in 1954, is the oldest broadcasting radio in Japan, located right in the centre of the city. With its 180 meters, the Tower

offers one of the best views of Nagoya. Here, tourists can enjoy their time in coffee shops or buying souvenirs.

Photo: cozyta/Shutterstock.com

Address: 3-6-15 Nishiki, Naka-ku, Nagoya

Opening hours: Closed due to renovations

Phone: +81 52 971 8546

Internet: [www.nagoya-tv-tower.co.jp](http://www.nagoya-tv-tower.co.jp)

More Info: Closed due to renovations

### Toyota Commemorative Museum of Industry and Technology



The huge Toyota Museum is a must-visit for all those interested in automotive history. The automotive pavilion features a great range of

vintage trucks and cars, while kids will love spending their time in the Technoland, a hands-on series of interactive displays. The Textile Machinery Pavilion offers a throwback to the time when the textile Industry was the main industry of Japan.

Photo: Sergey Nemirovsky/Shutterstock.com

Address: 4-1-35 Noritake Shin-machi, Nishi-ku, Nagoya

Opening hours: Closed on Mondays, Tue- Fri from 9:30 a.m. to 5:00 p.m.

Phone: +81 52 551 6115

Internet: [www.tcm.it.org](http://www.tcm.it.org)

More Info: Closed on Tuesday, if Monday is a holiday, year end, and New Year's holidays

### Higashiyama Zoological and Botanical Garden



Higashiyama Zoological and Botanical Garden is a vast green expanse right in the heart of Nagoya City. The 20 hectare open-range zoo is one of

Asia's largest, featuring lions, tigers, giraffes, bears and many other species. Gaze out onto the park from the Higashiyama Sky Tower and enjoy a good meal in the restaurant located in the 7th floor.

Photo: Emran Kassim/flickr.com (image cropped)

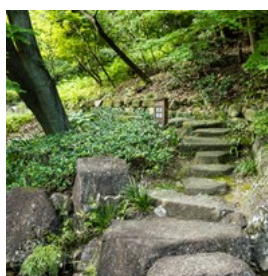
Address: 3-70 Higashiyama Motomachi, Chikusa-ku, Nagoya

Opening hours: Closed on Mondays, Tue - Sun from 9:00 a.m. to 4:50 p.m.

Phone: +81 52 781 1751 / +81 52 782 2111

Internet: [www.higashiyama.city.nagoya.jp](http://www.higashiyama.city.nagoya.jp)

### Tokugawa Gardens and Art Museum



These lavish gardens were constructed in 1694 as a residential retreat for Mitsutomo, the second Lord of the Owari clan. Sadly, however,

most of the garden and its buildings were destroyed during World War II. Restoration took a long time, with the garden being finally opened as a public park in 2004. If time permits, visit the adjacent Tokugawa Art Museum, the third oldest private museum in Japan, which miraculously survived the World War II air raids.

Photo: twoKim/Shutterstock.com

Address: 1017 Tokugawa-cho, Higashi-ku, Nagoya

Opening hours: Closed on Mondays, Tue - Sun from 10:00 a.m. to 5 p.m.

Phone: +81 52 935 6262

Tickets: Adults 1,400 yen, Students 700 yen, Children 500 yen

Internet: [www.tokugawa-art-museum.jp](http://www.tokugawa-art-museum.jp)

Email: [tokugawaen@utopia.ocn.ne.jp](mailto:tokugawaen@utopia.ocn.ne.jp)

### Kiso Valley



Four hundred years ago, both Magome and Tsumago were two of 69 staging posts on the 500 km Nakasendo “Highway”, a foot-trail

along which local warlords had to make an annual pilgrimage to the then-capital Edo (now Tokyo), to report in. Today, Magome and Tsumago look much as they once did. Magome, easily accessible from Nagoya by rail and bus, has a modern part of town with a few low-key gift shops but once you veer onto the broad foot-trail leading north through “old” Magome, it is very easy to forget that the subsequent centuries ever existed.

Photo: Olga Kashubin/Shutterstock.com

Address: Kiso Valley

More Info: From Nagoya’s main rail station, the JR Chuo Line runs regularly to Nakatsugawa Station. From Nakatsugawa, a half-hourly bus takes about 30 minutes to Magome.

### Yanagibashi Central Market



Yanagibashi Central Market is home to over 400 shops and fish stalls, dating back to the Edo era (1603-1868) and second in size only to

Tokyo’s giant Tsukiji Fish Market. Giant tuna, octopus, shrimp and many other varieties of fish are on sale here from early morning (around 6 am is best).

Photo: MauMar70/Shutterstock.com

Address: 4-11-3 Meieki, Nakamura-ku, Nagoya

Opening hours: Early morning to around 10.00 a.m., closed on Sundays, Wednesdays & holidays

Phone: +81-52 583 3811

More Info: 5 minutes away from Nagoya station

### Hamanako Garden Park



About 30 minutes by rail from downtown Nagoya via Hamatsu City, Hamanako Garden Park is what remains of Pacific

Flora, a floral exhibition that ran as a precursor to Expo 2005. Now the site, superbly located on a peninsula in Lake Hamana, has become a permanent civic attraction. Flowing through the grounds, just as during Pacific Flora, is the scenic Iridori Canal, still bridged by the classic Taikobashi (“tympani”) Bridge. The park is now a popular staging ground for rally events, including the HPI Challenge All Asia Finals.

Photo: T.Kiya/Flickr (image cropped)

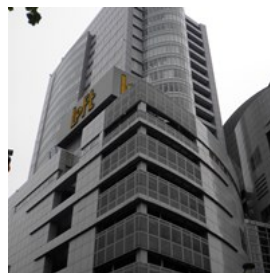
Address: 5475-1 Murakushicho, Nishi-ku, Shizuoka Prefecture, Nagoya

Opening hours: Mon - Sun from 8:30 a.m. to 5:00 p.m.

Phone: +81 53 488 1500

Internet: [www.hamanako-gardenpark.jp](http://www.hamanako-gardenpark.jp)

### Nadya Park



Take a culture break in the Design Museum and Design Gallery. These cover everything from industrial and commercial to historical design, and

have the visitor wondering (as happens every few minutes or so in Japan): “just where does this astonishing creativity come from?”

Photo: Lombroso/wikimedia.org (image cropped)

Address: 3-18-1 Sakae, Naka-ku, Nagoya,

Opening hours: Mon - Sun from 10:00 a.m. to 6:00 p.m.

Phone: +81 52 951 2986

Internet: [www.nadyapark.jp](http://www.nadyapark.jp)

### Port of Nagoya Aquarium



Housed in two separate buildings (one on five levels and the other three levels), this is a huge museum. Large underwater viewing

rooms make it easy to appreciate dolphins and other marine species close-up.

Photo: Everton Yamamoto/flickr.com (image cropped)

Address: 1-3 Minato-machi, Minato-ku, Nagoya

Opening hours: Open daily from 9:30 a.m. to 5:30 p.m.,

Golden Week and summer vacation: 9:30 a.m. to 8:00 p.m.,

Winter (December - March): 9:30 a.m. to 5:00 p.m.

Phone: +81 52 654 7080

Internet: [www.nagoyaaqua.jp](http://www.nagoyaaqua.jp)

More Info: Closed on Mondays, Entrance of the Aquarium closes one hour prior to the closing time

### DINING



Hywit Dimyadi/Shutterstock.com

"Nagoya meishi" is the way Nagoyans define their cuisine. The range of dishes includes miso-flavoured pork cutlets, fresh local seafood and, naturally, the misonikomi udon: thick wheat noodles boiled in miso broth with leeks, chicken and other ingredients. Spoil yourself with one of the best unagi dishes in the entire country.

### Ebisuya (Nishiki Shop)



Ebisu-ya is a well-known chain of shops offering tempura-fried shrimp and simple bowls of noodles and rice with various toppings. Try the

kishimen - the thin and flat noodles - and experience the authentic flavour of Japan.

Photo: Sasaken/shutterstock.com

Address: 3-20-7 Sakae, Nishiki, Nagoya

Opening hours: 11:00 a.m. to 1:00 a.m., open on Sundays

Phone: +81 52 961 3412

### Aichi Nagoya Japanese Restaurant Aikyo



This gourmet landmark has been in business for over 30 years. Specialties of the house include turtle, wagyu beef, Iseshima fresh abalone

steak and the potentially-deadly fugu fish (poisonous unless prepared with great care).

Photo: KPG\_Payless/Shutterstock.com

Address: 1-31 Nishino-chō, Atsuta-ku, Nagoya

Opening hours: 11:30 a.m. to 11:00 p.m.

Phone: +81 52 683 0010 / +81 120 353 505

Internet: <http://aikyou.jp/suppon>

### Atsuta Horaiken



Atsuta Horaiken is famous for their delicious grilled eel, the "hitsumabushi".

Tourists can enjoy their meal even more by

familiarising themselves with the instructions in English of how to eat the Nagoya hitsumabushi. The restaurant is very popular, especially during weekends, lunch and dinner time. If you come during rush hour, be prepared to queue.

Photo: Jayaibe/Shutterstock.com

Address: 503 Gōdochō, Atsuta-ku, Nagoya

Internet: [www.houraikens.com](http://www.houraikens.com)

More Info: Go early to avoid the long queue

### Trattoria Cesari



If you're craving pizza, Trattoria Cesari is the place to go. Italian speaking waiters serve delicious Italian dishes at affordable prices at this well-visited restaurant. If you are unlucky and the restaurant is full you can always take a seat at the café side.

Photo: Andrey Grigoriev/Shutterstock.com

Address: 3-36-44 Osu, Naka-ku, Nagoya

Opening hours: lunch 11:00 a.m. to 2:30 p.m., dinner 6:00 p.m. to 10:00 p.m., Closed on Wednesdays

Phone: +81 52 238 0372

Internet: [www.cesari.jp](http://www.cesari.jp)

### Maruya Honten Meiekiten



Unagi is taken very seriously at this popular spot for lunch, and dinners are provided with instructions on the different ways to have this savoury delight. You might have to wait to be seated, but the food is very much worth the wait. Take a look at the menu and you won't be disappointed.

Photo: Natwarin Rungwanitcha/Shutterstock.com

Address: Meitetsu Dept.store 9F, 1-2-1 Meieki, Nakamura-ku, Nagoya

Opening hours: open daily from 11:30 a.m. to 11:00 p.m.

Phone: +81 52 585 7108

Internet: [www.maruya-honten.com](http://www.maruya-honten.com)

More Info: The restaurant closes at the same time as the department store

### Ichiran



Ichiran is a nationwide chain specialising in noodles, so if quality Japanese tonkotsu ramen is what you're after, Ichiran will not disappoint. Customize your dish and choose your level of spiciness, amount of green onions and softness of noodles. A visit to this country-wide chain is an experience in itself: guests sit at individual stalls, and food is delivered from underneath a curtain that separates diners from the kitchen.

Photo: Sasaken/Shutterstock.com

Address: 3-12-22 Sakae, Naka-ku, Nagoya

Opening hours: open daily from 10:00 a.m. to 6:00 a.m.

Phone: +81 52 251 6101

Internet: <https://ichiran.com/shop/chubu/nagoya-sakae/>

More Info: To avoid queues contact the restaurant beforehand to confirm how crowded it.

### Sanpuku



Sanpuku is a restaurant with a homey feel that is known for its unparalleled eel dishes. It is located within a short walk from the Kanayama station.

Photo: Chalermpon Pongpeth/Shutterstock.com

Address: 1-2-19 Kanayamacho, Atsuta-ku, Nagoya

Opening hours: Lunch 11:30 a.m. to 2:00 p.m., Dinner 5:00 p.m. to 9:30 p.m., closed on Mondays

Phone: +81 52 671 1496

More Info: Small but cosy place.

### Coat of Arms



Coat of Arms is an expat magnet, and is a good choice for anyone who feels they have been on a diet of noodles and eel for a little too long. The establishment is a restaurant and a pub, so perfect for an evening drink while listening to good live music or for a hearty lunch.

Photo: Kzenon/Shutterstock.com

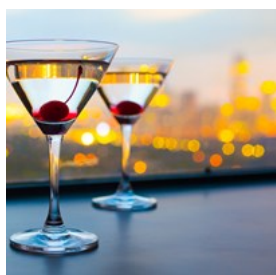
Address: 2-6-12 Nishiki, Naka-ku, Nagoya

Opening hours: Monday closed, Tue - Fri: lunch 11:00 a.m. to 2:00 p.m., dinner 5:00 p.m. to 12:00 a.m., Sat 5:00 p.m. to 12:00 a.m., Sun 11:00 a.m. to 9:00 p.m.

Phone: +81 52 228 6155

Internet: [www.coatofarms.jp](http://www.coatofarms.jp)

### Sky Lounge Zenith



Located on the 52nd floor of the Marriott Associa hotel, the Sky Lounge Zenith is a bar and restaurant that offers diners splendid birds-eye views of the city. Perfect for a special meal or an evening drink.

Photo: KieferPix/Shutterstock.com

Address: 1-1-4 Meieki, Nakamura-ku, Nagoya

Opening hours: Weekdays 1:00 p.m. to 12:00 a.m., Saturday 11:30 a.m. to 12:00 p.m., Sundays and Holidays 11:30 a.m. to 11:00 p.m.

Phone: +81 52 584 1108

Internet:

<https://www.associa.com/nma/multi-lingual/dining/zenith>

More Info: Nagoya Marriott Associa 52 floor, reservations required

### CAFES



Nejron Photo/Shutterstock.com

When visiting Nagoya, you'll find plenty of cafes ranging from small local places to big coffee shop chains offering breakfast, lunch and dinner. If you are a cake lover you will not have problems finding a cafe serving delicious and tasty cakes: try Café Gentiane JR Nagoya Station the serves the cutest animal-shaped desserts in the city.

### Popeye Media Café



This cavernous Internet café provides free drinks while you check your e-mail or surf the Internet. Books, movies and manga comics are

also there for the devouring. Besides the main branch (see below), Popeye Media Café has a venue in the Sakae precinct of Nagoya.

Photo: Katsiaryna Pakhomava/Shutterstock.com

Address: 1-2-1 Kanejubiru 2F Noritake, Nakamura-ku, Nagoya

Opening hours: Open 24 hours

Phone: +81 52 459 5711

Internet: [www.media-cafe.ne.jp](http://www.media-cafe.ne.jp)

More Info: Showers inside the Internet cafe

### Air Café



Air Café is a Parisian style upmarket café serving gourmet coffee sandwiches, cakes and desserts. The red brick walls, climbing vines and the outdoor terrace further add to the French ambience and are what distinguish this café from the others around.

Photo: MNStudio/Shutterstock.com

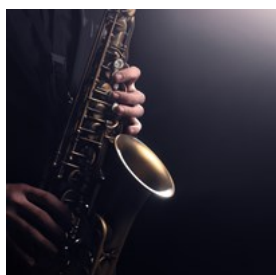
Address: 3-31-1 Sakae, Naka-ku, Nagoya, 1F Jyuiyo Buildings

Opening hours: Mon - Sat 11:00 a.m. to 11:00 p.m., Sunday 11:00 a.m. to 10:00 p.m.

Phone: +81 52 243 1302

Internet: [www.aircafe-sakae.com](http://www.aircafe-sakae.com)

### Jazz & Coffee Yuri



The coffee shop Jazz & Coffee Yuri is not just a coffee shop, but, as its name implies, also a place to enjoy jazz music. They serve not only coffee but also delicious food. If you have the chance to go here don't forget to order the chicken rice, their number one dish.

Photo: AlenaVlad/Shutterstock.com

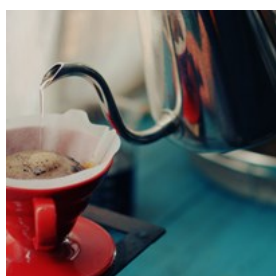
Address: 1-10-40 Higashisakura, Higashi-ku, Nagoya

Opening hours: closed on Mondays, Tues - Sat 12:00 p.m. to 12:00 a.m.

Phone: +81 52 951 7800

More Info: Suzuki Building 1F

### Kato Coffee Shop



If you're looking for an authentic Japanese breakfast experience, come have the first meal of the day at the Kato Coffee Shop. Here, you

will find high quality coffee at very low prices. The number one set, loved by both tourists and locals, is the "Nagoya set".

Photo: Tsumu/Shutterstock.com

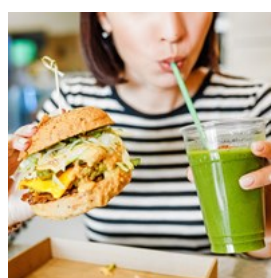
Address: 1-3-2 Higashisakura, Higashi-ku, Nagoya

Opening hours: Mon- Fri 7:00 a.m. to 4:45 p.m., Sat - Sun 8:00 a.m. 4:45 p.m.

Phone: +81 52 951 7676

Internet: [www.katocoffee.com](http://www.katocoffee.com)

### Love Pacific Cafe



The Love Pacific Cafe is one of the few great vegan shops in the area. It doesn't matter if you are vegan, vegetarian or just someone looking to try out plant-based alternatives, just stop by and try their healthy dishes free from white sugar, dairy and meat. Enjoy your meal in a cosy and friendly environment.

Photo: frantic00/Shutterstock.com

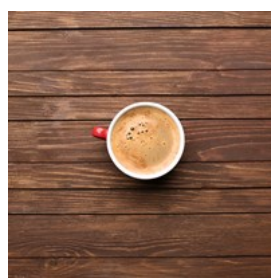
Address: 3-23-38 Sakae, Naka-ku, Nagoya

Opening hours: 24 hours

Phone: +81 52 252 8429

Internet: [www.pacifit.jp](http://www.pacifit.jp)

### MITTS Coffee Stand



Take a break from the sightseeing at the MITTS Coffee Stand. This cosy cafe is the perfect place to enjoy a good cup of cappuccino or just have a light lunch. Choose what best fits your mood from their menu and let yourself be cuddled by the aroma of freshly roasted beans.

Photo: Africa Studio/Shutterstock.com

Address: 2-8-15 Nishiki, Naka-ku, Nagoya

Opening hours: Mon - Fri 7:00 a.m. to 7:00 p.m., Sat - Sun 8:00 a.m. to 6:00 p.m.



Phone: +81 52-222-0207  
Internet: [www.mitts-coffee.com](http://www.mitts-coffee.com)

### Café Gentiane JR Nagoya Station

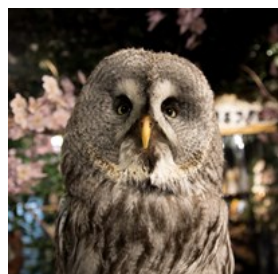


After a long day of visiting temples there is nothing better than a good coffee with a delicious cake. The Café Gentiane JR Nagoya

Station is famous all over Nagoya for their adorable and incredibly photogenic "pyorin chick" desserts.

Photo: [funny face/Shutterstock.com](#)  
Address: 1-1-4 Meieki, Nakamura-ku, Nagoya  
Opening hours: daily open from 7:00 a.m. to 10:00 p.m.  
Phone: +81 52 533 6001  
Internet:  
<https://www.jrt-food-service.co.jp/store/details47.html>  
More Info: Located in Nagoya Station

### Fukuro No Iru Mori Owl Cafe



Looking for a unique experience? Take advantage of having just that at an owl cafe in Nagoya. You have to pay a fee to get in, which

includes coffee and other drinks for the entire duration of your stay. Choose your favourite owl before leaving to snap that perfect picture.

Photo: [Alexander Vow/Shutterstock.com](#)  
Address: 3-25-41 Sakae, Naka-ku, Nagoya  
Opening hours: Mon - Fri 12:00 a.m. to 9:00 p.m., Sat - Sun 11:00 a.m. to 9:00 p.m., closed on Tuesdays  
Phone: +81 90 1754 2960

## BARS & NIGHTLIFE



*Nonchanon/Shutterstock.com*

The best nightclubs dot the Sakae and Nishiki precincts, where bars and clubs regularly host world famous DJs and musicians. Here, you can choose to go to a local bar, the so-called "izakaya", and spend your time with the locals or opt for a more international bar if you don't feel too confident with your Japanese skills just yet.

### Plastic Factory



This super-chic bar and club used to be just what the name indicates - a plastics factory. The machine rhythms are today a little more subtle

than in the past, ranging from techno to psychedelic trance. There is also an art gallery on the premises.

Photo: [Pressmaster/Shutterstock.com](#)  
Address: 32-13 Kanda-cho, Chikusa-ku, Nagoya  
Opening hours: Open on Friday 9:00 p.m. to 1:00 a.m., Saturday 9:00 p.m. to 5:00 a.m., Sunday 9:00 p.m. to 1:00 a.m., Closed on Monday, Tuesday and Wednesday  
Phone: +81 90 9894 9242 (English) / +81 90 3937 5672 (Japanese)  
Internet: [www.plasticfactory.jp](http://www.plasticfactory.jp)  
More Info: About five minutes' walk from Imaike Subway Sta. Exit 2 or 3

### Club Quattro



The Nagoya branch of this three-city nightclub chain (with two other branches in Tokyo and one in Hiroshima) is well known for its quality live music from both international and domestic bands. As for foreign artists, some big names need to be mentioned, such as Lanny Kravitz, Nirvana, OASIS and more, all of which have played here.

Photo: dwphotos/Shutterstock.com  
Address: 3-29-1 Sakae, Naka Ward, Nagoya  
Phone: +81 52 264 8211  
Internet: [www.club-quattro.com](http://www.club-quattro.com)  
Email: [otoiwase@parco.jp](mailto:otoiwase@parco.jp)  
More Info: Parco Buildings, East Mansion 8F

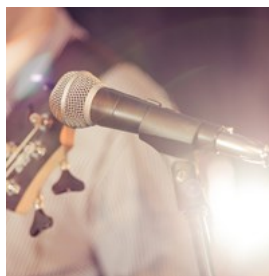
### Zepp Nagoya



Zepp Nagoya is a famous live music venue in Nagoya with six other concert halls all around the country. The place boasts the largest dance hall in Nagoya and holds live concerts on a regular basis. It lies just a ten minute walk from the Central Station. So, if you are in search of a good live concert take a look at their schedule.

Photo: Marco Scisetti/Shutterstock.com  
Address: 4-60-7 Hiraike-cho, Nakamura-ku, Nagoya  
Phone: +81 52 541 5758  
Internet: [www.zepp.co.jp](http://www.zepp.co.jp)

### Tokuzo



“Open house to live house” describes the gamut of music at this new night space. Latin-influenced music and dance (including tango) often feature in the line-up. Snacks from a basic menu are offered until late hours.

Photo: iraua/Shutterstock.com  
Address: 1-6-8 Imaike, Chikusa Ward, Nagoya  
Opening hours: open daily 6:00 p.m. to 5:00 a.m.  
Phone: +81 52 733 3709  
Internet: [www.tokuzo.com](http://www.tokuzo.com)  
Email: [mail@tokuzo.com](mailto:mail@tokuzo.com)  
More Info: Blue Star Building 2F

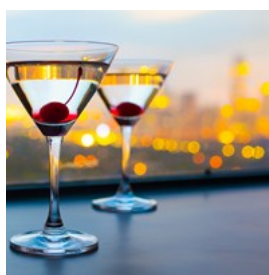
### Coat of Arms



Coat of Arms is an expat magnet, and is a good choice for anyone who feels they have been on a diet of noodles and eel for a little too long. The establishment is a restaurant and a pub, so perfect for an evening drink while listening to good live music or for a hearty lunch.

Photo: Kzenon/Shutterstock.com  
Address: 2-6-12 Nishiki, Nagoya  
Opening hours: Monday closed, Tue - Fri: lunch 11:00 a.m. to 2:00 p.m., dinner 5:00 p.m. to 12:00 a.m., Sat 5:00 p.m. to 12:00 a.m., Sun 11:00 a.m. to 9:00 p.m.  
Phone: +81 52 228 6155  
Internet: <https://www.coatofarms.jp/>

### Sky Lounge Zenith



Located on the 52nd floor of the Marriott Associa Hotel, the Sky Lounge Zenith is a bar and restaurant that offers diners splendid birds-eye

views of the city. Perfect for a special meal or an evening drink.

Photo: KieferPix/Shutterstock.com

Address: 1-1-4 Meieki, Nakamura-ku, Nagoya

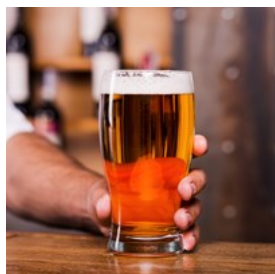
Opening hours: Weekdays 1:00 p.m. to 12:00 a.m., Saturday 11:30 a.m. to 12:00 p.m., Sundays and Holidays 11:30 a.m. to 11:00 p.m.

Phone: +81 52 584 1108

Internet: <https://www.associa.com/nma/multi-lingual/dining/enith/?wovn=en>

More Info: Nagoya Marriott Associa 52 floor, reservations required

### Y Market Brewing Kitchen



This bar and eatery is located not far from the Nagoya station, and is a safe bet when it comes to beer and Japanese food to go along. In this bar you are all but guaranteed to have one of the best craft beers in the city.

Photo: g-stockstudio/Shutterstock.com

Address: 4-17-6 Meieki, Nakamura-ku, Nagoya

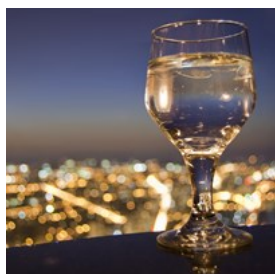
Opening hours: Mon - Fri 3:00 p.m. to 11:00 p.m., Sat - Sun 11:30 a.m. to 10:00 p.m.

Phone: +81 52 533 5151

Internet: <https://craftbeer.nagoya/>

More Info: Website link: <https://ymarket.craftbeer.nagoya/>

### Blue'dge



Located on the 41st floor of a high-rise building, this bar is the perfect spot for an evening drink with a view. A variety of drinks, including artisan cocktails, are on the menu.

Photo: Owen Weber/Shutterstock.com

Address: 4-7-1 Meieki, Nakamura-ku, Nagoya

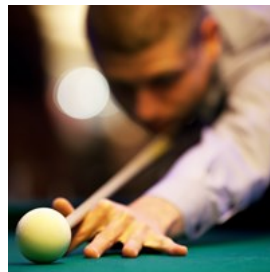
Opening hours: lunch 11:00 a.m. to 2:30 p.m., dinner 5:30 p.m. to 11:00 p.m.

Phone: +81 52 527 8866

Internet: <https://bluedge41.com/>

More Info: Midland Square 41st floor

### Shooters Sports bar&grill



Shooters is a sports bar that is very popular among expats and draws a very international crowd in the evenings.

This friendly and welcoming bar is also a great place to play pool and darts.

Photo: Mikadun/Shutterstock.com

Address: Sakae 2-9-26, Naka-ku, Nagoya

Opening hours: Mon - Fri 5:00 p.m. to 1:00 a.m., Sat 11:30 a.m. to 3:00 a.m., Sun 11 30 a.m. to 1:00 a.m.

Phone: +81 52 202 7077

Internet: [www.shooters-nagoya.com](http://www.shooters-nagoya.com)

More Info: Pola Building 2nd floor

## SHOPPING



KPG\_Payless/Shutterstock.com

As its size and status suggest, there are plenty of shopping opportunities in Nagoya, particularly in the Sakae district. Located next to Nagoya Station you'll find the Meitetsu department store for high fashion boutiques, designer and accessory outlets. Other malls, which also double up as places for entertainment, include Central Park, located beneath the TV towers, and Osu Shopping Arcade on Niomon Street.

On the mornings of the 18th and 28th of each month, close by Osu Kannon station, the fun-to-browse-through Osu Flea Market takes place with its mishmash of genuine antiques.

### Noritake no Mori (Noritake Garden)



This factory outlet for the renowned range of Noritake china and porcelain is well worth a visit, if only to see how the products are made.

Photo: Variousimages/Shutterstock.com

Address: 3-1-36 Noritake-shinmachi, Nishi-ku, Nagoya

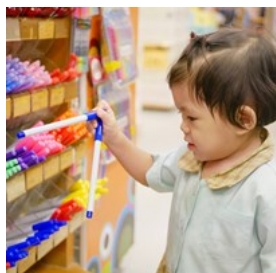
Opening hours: Open daily from 10:00 a.m. to 5:00 p.m.

(Welcome center)

Phone: +81 52 561 7290

Internet: [www.noritake.com](http://www.noritake.com)

### Loft Department Store



Loft Department Store is located in Nadya Park. Loft Nagoya occupies seven floors in a towering 27-level building (23 of them above ground level), and features a travel goods shop, anime figurine shop, cutting-edge clothing outlets, Kinokiyu bookshop, stationery shop and many other outlets.

Photo: OLE\_CNX/Shutterstock.com

Address: Nadya-park, 3-18-1 Sakae, Naka-ku, Nagoya

Opening hours: Open daily from 10:30 a.m. to 8:00 p.m.

Phone: +81 52 265 2199

Internet: [www.loft.co.jp](http://www.loft.co.jp)

### Osu Kannon Flea Market



This big antiques market is held on the 18th and 28th of every month. A little expertise in antiques evaluation would be very useful, as it is often difficult to find genuine items amongst a sea of dross.

Photo: taboga/Shutterstock.com

Address: 2-21-47 Osu, Naka-ku, Nagoya

Phone: +81 52-231-6525

More Info: Held every month on the 18th and 28th

### JR Central Towers



These two connected towers are adjacent to the JR station, and are home to the Marriot Associa Hotel. Hotel guests don't have to look far for good shopping - it is available in the mall located right inside the tower complex

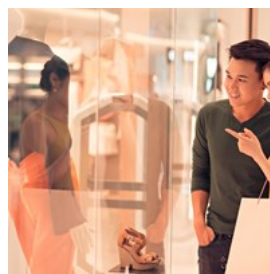
Photo: KPG\_Payless/Shutterstock.com

Address: 1-1-4 Meieki, Nakamura-ku, Nagoya

Phone: +81 52 586 8760

Internet: [www.towers.jp](http://www.towers.jp)

### Unimall



Uni Mall houses 700 stores, all of which are located in a huge underground complex. Beside shopping there are also good options for dining, as the mall offers restaurants and fast food chains.

Photo: Dragon Images/Shutterstock.com

Address: 4-5-26 Meieki, Nakamura-ku, Nagoya

Opening hours: Open daily from 10:00 a.m. to 8:30 p.m.

Phone: +81 52 586 2511

Internet: [www.unimall.co.jp](http://www.unimall.co.jp)

### Oasis 21



Oasis 21 is a shopping and entertainment centre located right next to the TV tower, one of the big landmarks of Nagoya.

There are plenty of shopping options and boutiques here, as well as entertainment venues, but what truly makes this mall stand out is its inviting open air atrium.

Photo: [coloursinmylife/Shutterstock.com](#)

Address: 1-11-1 Higashisakura, Higashi-ku, Nagoya

Opening hours: open daily from 10:00 a.m. to 10:00 p.m.

Phone: +81 52 962 1011

Internet: [www.sakaepark.co.jp](http://www.sakaepark.co.jp)

More Info: Bus terminal on the 2nd floor

### Mozo Wonder City



Mozo Wonder City is one of the city's biggest shopping malls, with its multiple floors packed with shops, boutiques, dining venues and movie

theatres. This is a shopping destination that shouldn't be missed.

Photo: [Gnsin/Wikimedia Commons](#) (image cropped)

Address: 40 Futakatacho, Nishi-ku, Nagoya

Opening hours: open daily from 10:00 a.m. to 10:00 p.m.

Phone: +81 52 505 1888

Internet: [www.mozo-wondercity.com](http://www.mozo-wondercity.com)

### Asunal Kanayama



Asunal Kanayama is a popular shopping mall with authentic dining venues and a selection of local as well as international boutiques.

The mall has 60 shops offering a variety of goods, so you will probably not leave it empty handed.

Photo: [Pressmaster/Shutterstock.com](#)

Address: 1-17-1 Kanayama, Naka-ku, Nagoya

Opening hours: Shops from 10:00 a.m. to 9:00 p.m., restaurant from 10:00 a.m. to 10:00 p.m.

Phone: +81 52 324 8577

Internet: [www.asunal.jp](http://www.asunal.jp)

### Yanagibashi Central Market



Yanagibashi Central Market is home to over 400 shops and fish stalls, dating back to the Edo era (1603-1868) and second in size only to

Tokyo's giant Tsukiji Fish Market. Giant tuna, octopus, shrimp and many other varieties of fish are on sale here from early morning (around 6 am is best).

Photo: [MauMar70/Shutterstock.com](#)

Address: 4 Chome, Meieki, Nagoya

Opening hours: early morning to around 10.00 a.m., closed on Sundays, Wednesdays and on holidays

Phone: +81-52-583-3811

More Info: 5 minutes away from Nagoya station

## TOURIST INFORMATION



*kirati apivattakakul/Shutterstock.com*

### Chubu Centrair International Airport



Flights to Nagoya land at the new Chubu Centrair International Airport (Central Japan International Airport), about 40 km south of

Nagoya. The airport is located about 40 km south of Nagoya on an artificial island.

The fastest way to reach the city is by train. The best service is the Sky Limited Express which brings you to Nagoya Central Station in just 28 minutes.

Other ways to reach Nagoya include by bus, which is less expensive but takes longer (around 70 minutes).

Taxis are also readily available (expect to pay around 14,000 yen), and so are rental cars.

Photo: Juan Garces

Address: 1-1 Centrair, Tokoname, Japan

Phone: +81 56 938 1195

Internet: [www.centrair.jp/en](http://www.centrair.jp/en) / [www.meitetsu.co.jp](http://www.meitetsu.co.jp)

### Passport/Visa



Japan may be visited visa-free for up to 90 days by citizens of all European Union member states, Australia, Canada, the USA, as well as

several other world countries.

The up-to-date list of visa exemptions by country may be found at: [https://www.mofa.go.jp/j\\_info/visit/visa/short/novisa.html](https://www.mofa.go.jp/j_info/visit/visa/short/novisa.html)

Citizens of countries not listed as not requiring visa will need to apply in advance via a Japanese mission or consulate closest to them.

Special visa requirements apply to citizens of China and the Philippines, as well as travellers visiting Japan as part of a cruise journey.

Photo: TukTukDesign/Shutterstock.com

### Best Time to Visit



If you are planning your trip and wondering what the best time to visit Nagoya may be, it is certainly Spring and Autumn. In spring, the

cherry blossoms (Sakura), make the city the perfect place for a romantic getaway. In Autumn, the main streets are all coloured in red, orange and yellow. The "mapple hunting" (momijigari) makes it a true delight to explore.

Avoid June and July, which are considered to be the rainiest months, also notoriously hot and humid.

Some interesting events throughout the year:

January: Coming of Age Day (Seijin no hi)

March: Dolls Festival (Hinamatsuri)

April: Flower viewing (Hanami)

November: Seven-five-three (Shichi go san)

October: Nagoya Festival (Nagoya Matsuri)

Photo: VectorA/Shutterstock.com

### Public Transport



The best way to get around Nagoya is by Metro (underground or subway). There are five main subway lines, connecting at Nagoya

Central station, Marunouchi and ten other hubs. Stations are well signed in English and Japanese as well colour coded. There is also a bus service, including late-night buses.

Day Subway Passes are available from vending machines and ticket counters. Meitetsu Operates train services from Meitetsu Nagoya Station into the suburbs, surrounding regions and the international airport. JR (Japan Railways) connects Nagoya with Tokyo, Osaka and Kyoto.

Photo: Pierre-Luc Auclair  
Internet: [www.meitetsu.co.jp/eng](http://www.meitetsu.co.jp/eng)

### Taxi



Taxis can be hailed anywhere, but as many Japanese taxi drivers don't speak English is highly recommended, unless you speak

Japanese, to have the address in writing.

Here are a few major taxi companies in Nagoya:

Kintetsu Taxi  
+81 52 221 6611

Tsubame Taxi  
+81 52 203 1212

Meitetsu Taxi  
+81 52 331 2211

Takahara Taxi  
+81 52 682 6000

Photo: ArrivalGuides  
Phone: +81 52 221 6611

### Post



Japanese postal service are known for being one of the most organised and precise in the world. Search for the orange "JP" logo, drop in, and

send your item.

Photo: Andy Fuchs  
Address: 4-23-13 Meieki, Nakamura-ku, Nagoya

### Pharmacy



Throughout Japan, drugs are mainly prescribed and issued by doctors' offices, clinics, and hospitals. Some city drug stores include: Biandodei

(B&D)  
+81 52 259 7575

Ark Pharmacy  
+81 52 252 1723

## Vdrug

+81 52 249 3600

Photo: Gemma Garner

Address: 4-11 Kawana-cho, Showa-ku, Nagoya

## Telephone



Country code: +81 Area  
code: 05

Photo: Jardson Almeida

## Electricity



Electricity in Japan is 100  
volts in 50 Hz, (60 Hz for  
the Nagoya and Osaka  
area), which is different  
from Europe (220 volts)  
and the United States

(110 volts). Power plugs have two flat-sided  
prongs.

Photo: Stirling Tschan

## Population

2,311,132 (2018)

## Currency

Yen

## Newspapers

The Japan Times  
Yomiuri Shimbun  
Asahi Shimbun  
Chunichi Shimbun  
The Mainichi (English Version)

## Emergency numbers

110 Police  
119 Fire department & Ambulance

## Tourist information

Nagoya City Tourist Information Center  
1-1-4 Meieki, Nakamura-ku, Nagoya (JR Nagoya Station)  
+81 52 541 4301

Nagoya International Center (Different foreign languages  
spoken)

1-47-1 Nagono, Nakamura-ku, Nagoya  
+81 52-581-5678

OASIS 21 i Center

1-11-1 Higashisakura, Higashi-ku, Nagoya  
Open Hour: 10:00 a.m. 8:00 p.m.  
+81 -52 963 5252